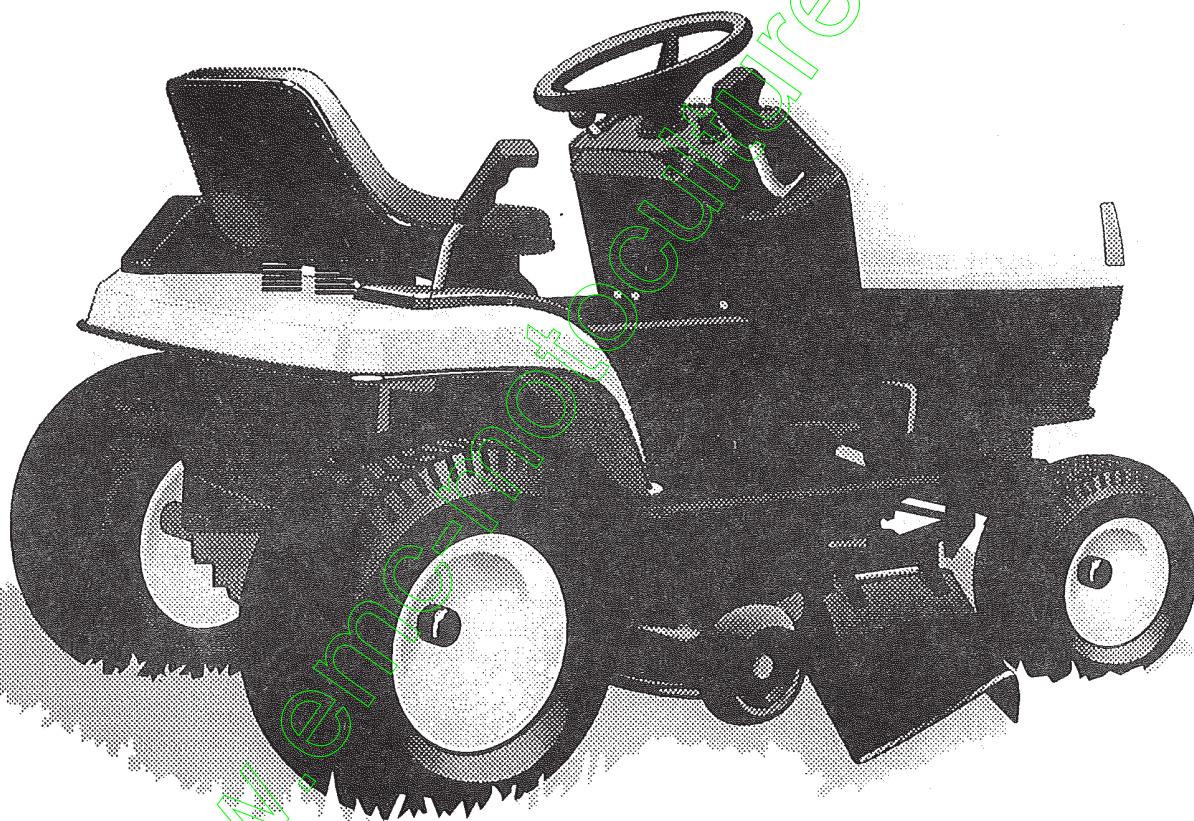


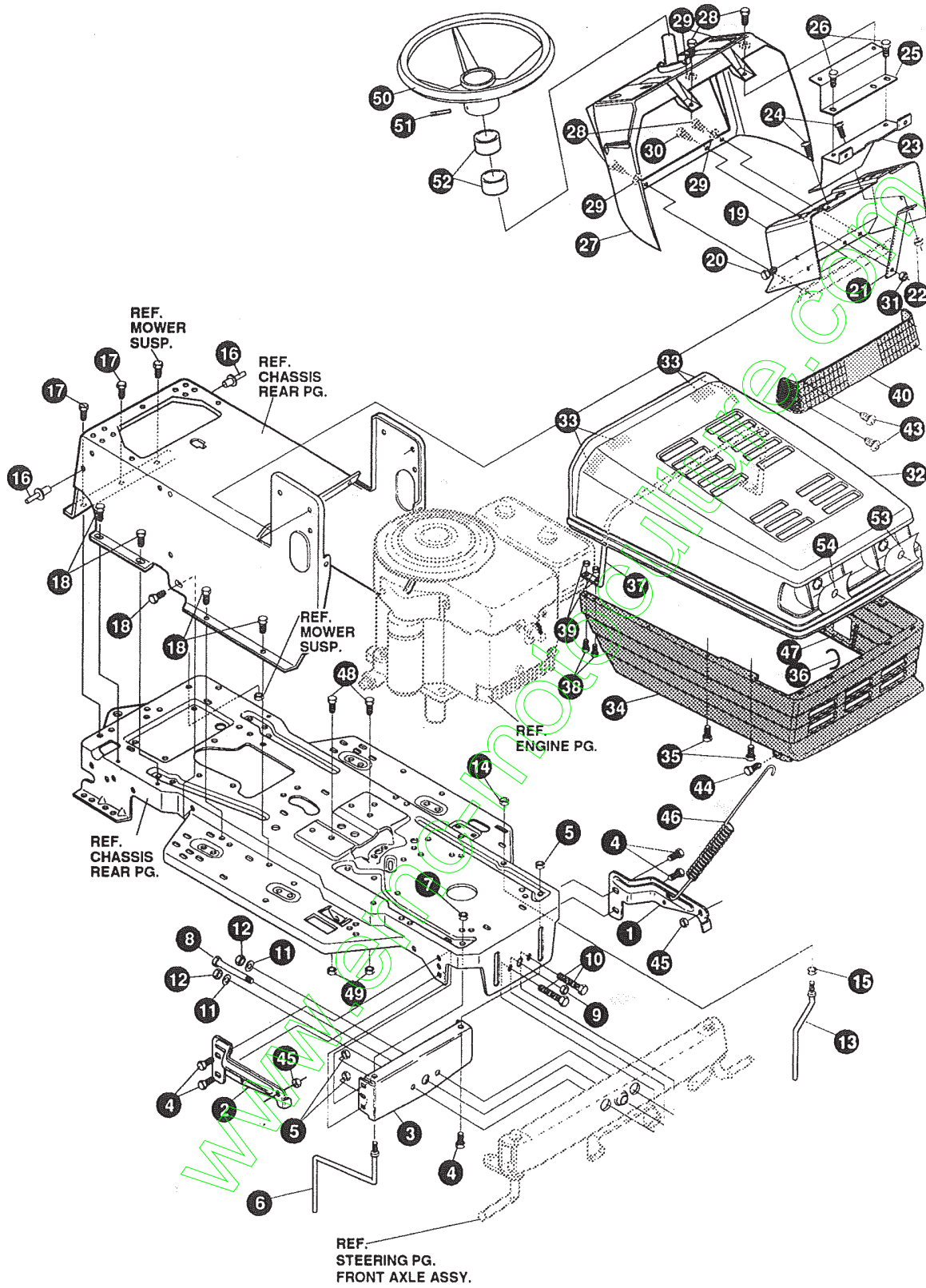
PARTS

MANUAL

Lawn Tractors



Model F3560-190

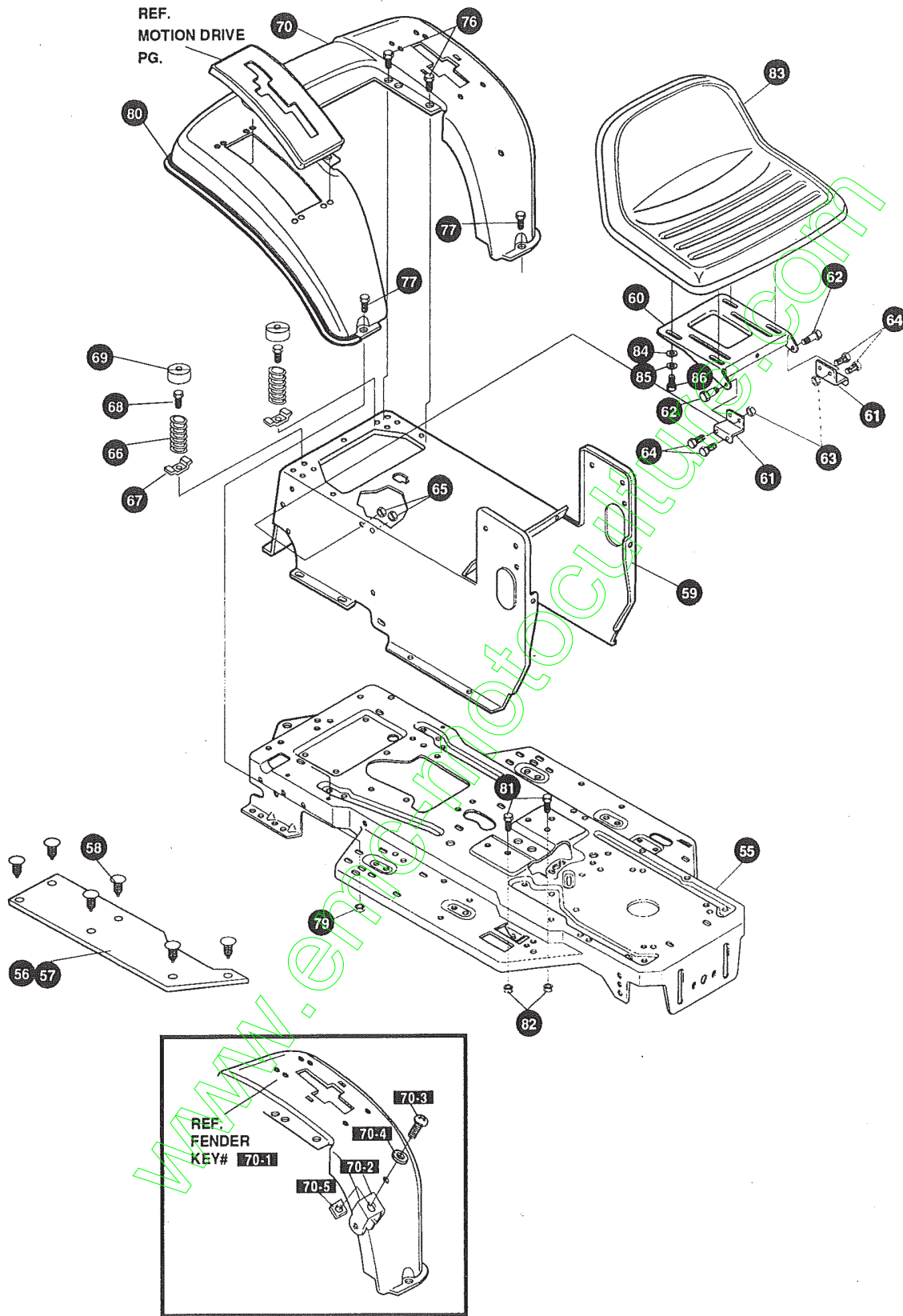


NOTE: ALWAYS USE ORIGINAL EQUIPMENT PARTS.
 Use of service/replacement parts other than original equipment parts may void your warranty.

ALL UNNUMBERED ITEMS ARE INTERCHANGEABLE WITH OPPOSITE SIDE

325876 E

KEY#	PART#	DESCRIPTION	QTY
1	326569-853	BRACKET, GRILLE, LH	1
2	326568-853	BRACKET, GRILLE, RH	1
3	313541-853	BRACKET, FRONT AXLE	1
4	56030	SCREW, 5/16-18 X.75 WDFLLK	5
5	55273	NUT, 5/16-18 WDFLLKLRG WHIZ	5
6	300440	GUIDE, BELT, RIDER	1
7	1498	NUT, 5/16-18 REGHEXCTRLK	1
8	308207	BOLT, .625 X 2.18 HSH, 1/2-13	1
9	309008	NUT, 1/2-13 HEXJAM CTRLK	1
10	180138	SCREW, 3/8-16 X 3.00 HHC	2
11	2483	WASHER, .39 ID X 1.25 D X .07 BELLVIL	2
12	1499	NUT, 3/8-16 REGHXCTRLK	2
13	300635	GUIDE, BELT, SHORT, 15" WHEEL	1
14	124824	NUT, 5/16-18 HEXJAM	1
15	271190	NUT, 3/8-16 HEXKEPS	1
16	46763	RIVET, POP .187 DIA X .450 LONG	3
17	35497	SCREW, 5/16-18 X .50 WAHTAP	2
18	995346	SCREW, 1/4-20 X .50 WAHTAP	10
19	58312-853	SUPPORT, DASH, STEEL	1
20	300303	SCREW, .25 X .75 X .51 HHWAPLASTITE	2
21	300201-853	BRACE, DASH, SUPPORT LOWER	1
22	1502	NUT, 1/4-20 REGHEXCTRLK	1
23	302530-853	BRACKET, GAS TANK	1
24	995346	SCREW, 1/4-20 X .50 WAHTAP	2
25	300264-853	BRACE, DASH, SUPPORT, UPPER	1
26	995346	SCREW, 1/4-20 X .50 WAHTAP	2
27	305428	DASH, GP, W/O GRAPHIC, SUS, BLACK	1
28	995346	SCREW, 1/4-20 X .50 WAHTAP	4
29	316868	WASHER, SHOULDER NYLON, 255 X .46	4
30	44811	SCREW, 1/4-20 X .75 WAHTAP	1
31	1502	NUT, 1/4-20 REGHEXCTRLK	1
32	307033	HOOD, H-11, PLASTIC	1
33	318197	PAD, ADHESIVE, 1.00 X 1.50 X .12	4
34	328044	GRILL, LOWER GPOWER, LG, G-14	1
35	300302	SCREW, #10 X .50 HHTAPPST, BLACK	4
36	310203	CLIP, HOG RING, C-SHAPED	1
37	301425	BRACE, HOOD SUPPORT, H-11, GP	1
38	301542	SCREW, 10-24 X 1.00 HWATAP, BLACK	4
39	308459	NUT, #10-24 HXHDNYLK	4
40	302333	LENS, SMOKED, W/TAB, NO LOGO	1
43	57796	SCREW, #6 X .50 PLASTITE/HI-LO	4
44	56676	BOLT, .375 X .580 HSH, 5/16-18	2
45	1498	NUT, 5/16-18 REGHEXCTRLK	2
46	57478	SPRING, HOOD LATCH	2
47	301452	FOIL, HEAT REFLECTOR	1
48	180079	SCREW, 5/16-18 X 1.00 HHC	2
49	1498	NUT, 5/16-18 REGHEXCTRLK	2
50	330848	STEERING WHEEL	1
51	456378	PIN, SPRING .250 DIA X 2.00 LONG	1
52	301413	SPACER, STEERING SHAFT	2
53	301541	FOIL, REFLECTOR, LENS, H-11, LH	1
54	301540	FOIL, REFLECTOR, LENS, H-11, RH	1
	336054	PARTS MANUAL	1
	335155	OPERATOR'S MANUAL (FRENCH)	1



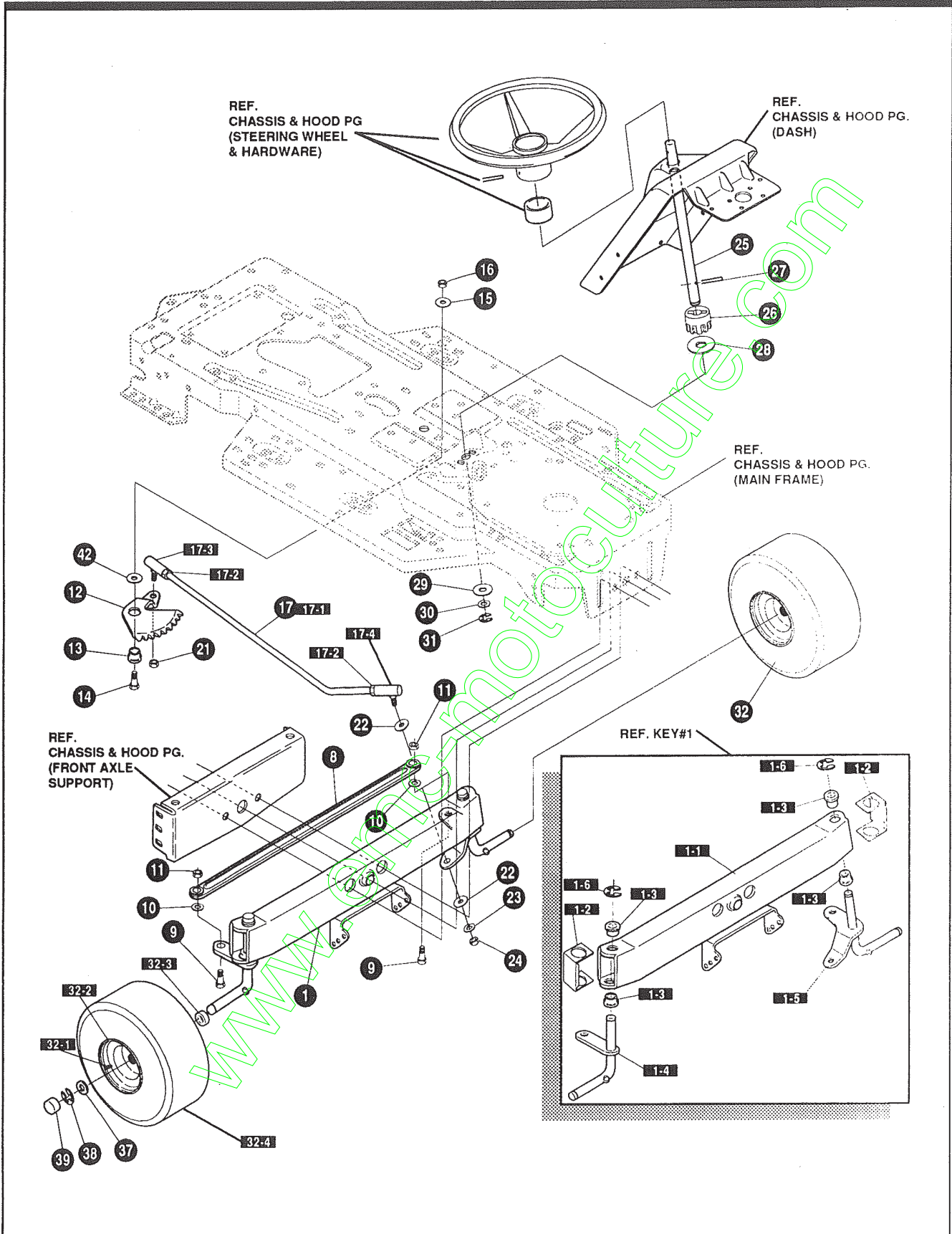
NOTE: ALWAYS USE ORIGINAL EQUIPMENT PARTS.
 Use of service/replacement parts other than original equipment parts may void your warranty.

ALL UNNUMBERED ITEMS ARE INTERCHANGEABLE WITH OPPOSITE SIDE

325904 C

KEY#	PART#	DESCRIPTION	QTY
55	335697-860	FRAME, LF, MAIN, P920/F4360	1
56	310005	FOOT PAD, LH, 22.12 LONG, DYNA, F-5	1
57	310006	FOOT PAD, RH, 22.12 LONG, DYNA, F-5	1
58	309235	FASTENER, RATCHET, BLACK	12
59	327575-860	CONSOLE, NON-WALK THRU, LF, SOF	1
60	58367-860	PLATE, SEAT, F5, SF, LF	1
61	310660-860	BRACKET, F-5, SEAT SUPPORT	2
62	20507	BOLT, .437 X .156 HHSH, 5/16-18	2
63	1498	NUT, 5/16-18 REGHEXCTRLK	2
64	48901	SCREW, 5/16-18 X .63 WAHHC	4
65	1498	NUT, 5/16-18 REGHEXCTRLK	4
66	57153	SPRING, SEAT 2.63 LONG, 1.49 OD, BLACK	2
67	1341	CLAMP, SPRING, 1.17" I D	2
68	44811	SCREW, 1/4-20 X .75 WAHTAP	2
69	56907	COVER, SEAT SPRING, 1.5 ID X 1.0 LONG	2
70	*	ASSEMBLY, FENDER, F5, LF, SOF, SUSP	1
70-1	332185-860	FENDER, F5, SUS, LF, SOF	1
70-2	9239	CLEVIS	1
70-3	439455	SCREW, 5/16-18 X .56 PHPNMA	1
70-4	301551	WASHER, .344 ID X 1.50 D X .09	1
70-5	120373	NUT, 5/16-18 SQUARE	1
76	995346	SCREW, 1/4-20 X .50 WAHTAP	4
77	126358	BOLT, 5/16-18 X 1.00 CARRLN	2
79	55273	NUT, 5/16-18 WDFLLKLRG	2
80	55023	TRIM, STRIP, BLACK—SMALL, W/ ADH	77.5
81	180079	SCREW, 5/16-18 X 1.00 HHC	2
82	1498	NUT, 5/16-18 REGHEXCTRLK	2
83	57455	SEAT, MICHIGAN GEN, W/SWITCH HOLE	1
84	120393	WASHER, FLAT .344 X .69 X .065	4
85	120638	WASHER, HVSP TLK .328 X .60 X .09	4
86	180077	SCREW, 5/16-18 X .75 HHC	4

* ORDER INDIVIDUAL PARTS



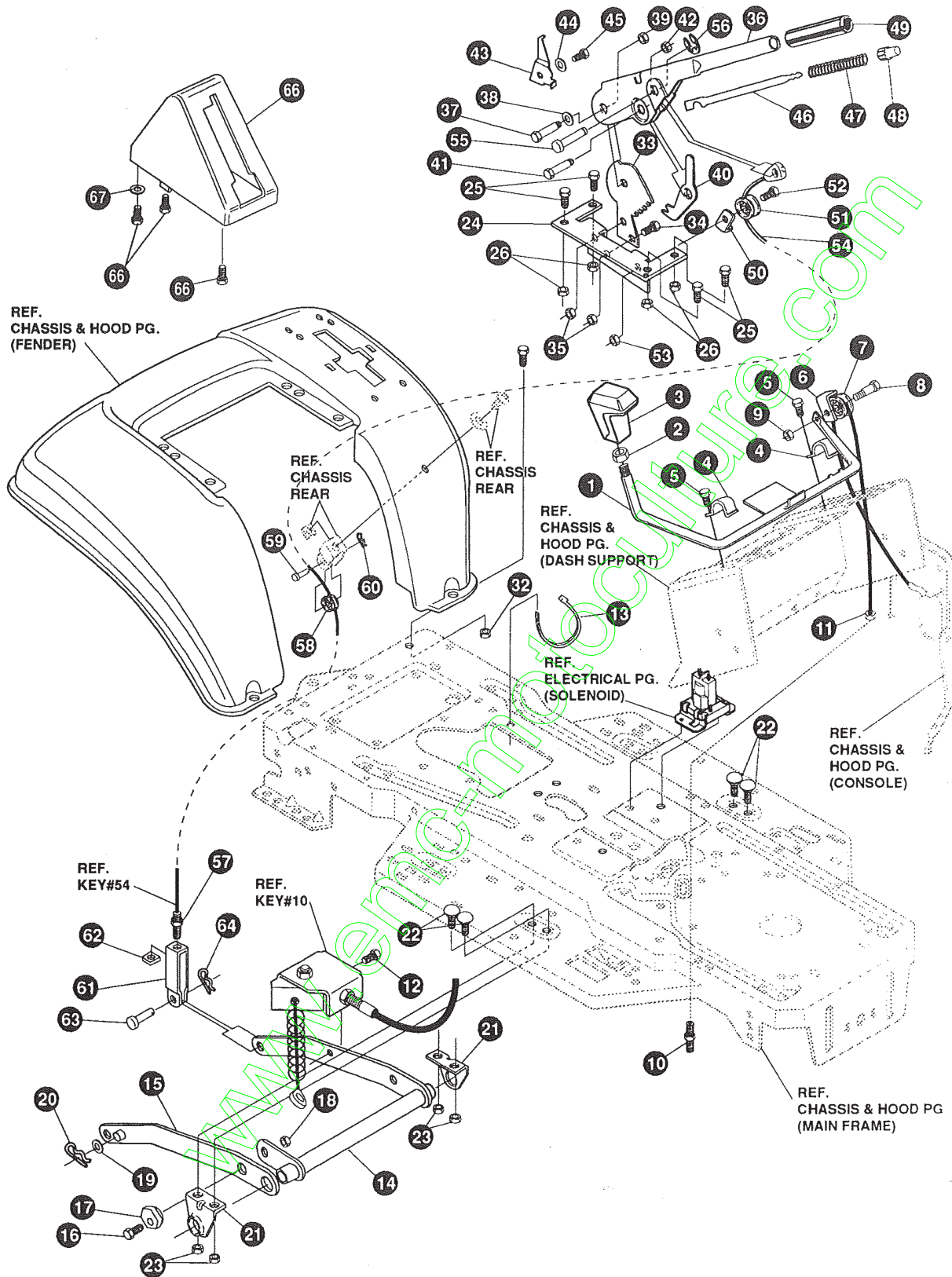
NOTE: ALWAYS USE ORIGINAL EQUIPMENT PARTS.
 Use of service/replacement parts other than original equipment parts may void your warranty.

ALL UNNUMBERED ITEMS ARE INTERCHANGEABLE WITH OPPOSITE SIDE

315136 J

KEY#	PART#	DESCRIPTION	QTY
1	*	ASSEMBLY, AXLE FRONT, 4WS, SUSP	1
1-1	310170	AXLE, FRONT	1
1-2	53373	AXLE COVER	2
1-3	52407	SPINDLE, BEARING	4
1-4	302926	ASSEMBLY, SPINDLE, RH	1
1-5	315886	ASSEMBLY, SPINDLE, LH	1
1-6	36625	RING, RETEX .57 X .05 TRU 5133-75	2
8	304590	TIE ROD ASSEMBLY, 19.81 LONG, W-SECTION	1
9	180128	SCREW, 3/8-16 X 1.75 HHC	2
10	120382	WASHER, REGSPTLK .393 X .68 X .10	2
11	1499	NUT, 3/8-16 REGHXCTRLK	2
12	58289	SECTOR, STEERING, LF	1
13	52406	BEARING, FLANGE, ECC .510 ID X .998 OD X .56	1
14	180177	SCREW, 1/2-13 X 1.50 HHC	1
15	22265	WASHER, FLAT .515 X 1.38 X .119	1
16	1500	NUT, 1/2-13 REGHCTRLK	1
17	311100	KIT 300146 DRAGLINK	1
17-1	58291	STEERING LINK	1
17-2	124925	NUT, 3/8-24 REGHEXJAM	2
17-3	57158	BALL JOINT, 3/8 THD SHORT, STUD	1
17-4	21275	BALL JOINT, 3/8 THD LONG, STUD	1
21	46692	NUT, 3/8-24 WDFLHLK WHIZ	1
22	996416	WASHER, FLAT .391 X 1.00 X .125	2
23	120382	WASHER, REGSPTLK .393 X .68 X .10	1
24	120369	NUT, 3/8-24 REGHEX	1
25	332528	SHAFT, STEERING LF, 2WS	1
26	58244	PINION, STEERING, LF	1
27	58274	PIN, DOWEL .2500 OD+1.75 LONG	1
28	301410	BEARING, FLANGE .752 ID X 1.061 OD X .24	1
29	301398	WASHER, FORMED 1.135 X 1.53 X .12	1
30	21682	WASHER, FLAT .765 X 1.25 X .042	1
31	36625	RING, RETEX .57 X .05 TRU 5133-75	1
32	*	TIRE & RIM, PU 15 X 6.0 X 6	2
32-1	24167	VALVE STEM	
32-2	39829	RIM, WHEEL	
32-3	314416	BEARING, FLANGE	
32-4	316702	TIRE, 15 X 6 X 6	
37	642	WASHER, FLAT .755 X 1.31 X .075	4
38	36625	RING, RETEX .57 X .05 TRU 5133-75	2
39	40394	HUB CAP, 1.500 ID X 7/8 LONG	2
42	49998	WASHER, FLAT .520 X 1.25 X .209	1

* ORDER INDIVIDUAL PARTS

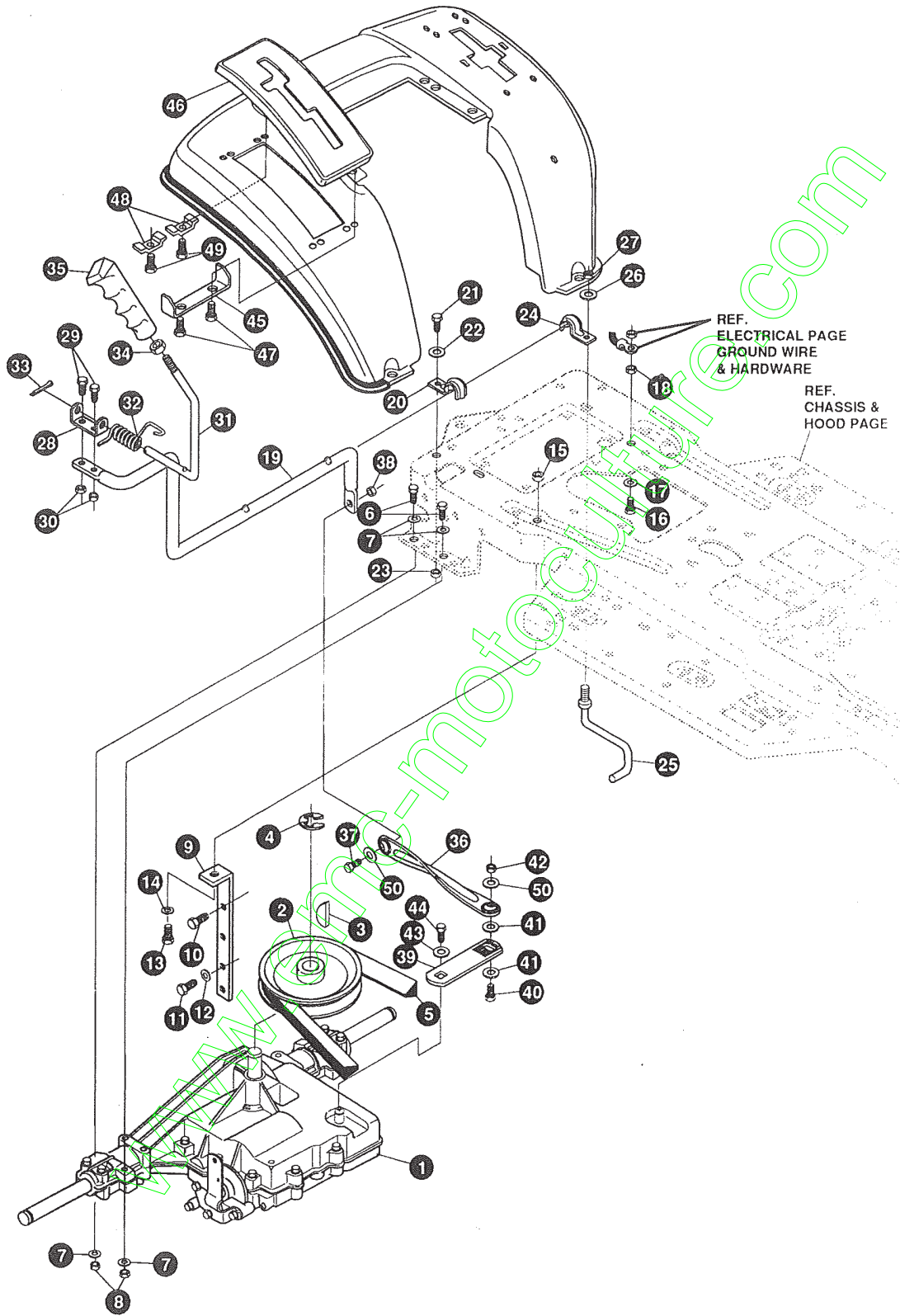


NOTE: ALWAYS USE ORIGINAL EQUIPMENT PARTS.
 Use of service/replacement parts other than original equipment parts may void your warranty.

**ALL UNNUMBERED
 ITEMS ARE INTERCHANGEABLE
 WITH OPPOSITE SIDE**

315597 I

KEY#	PART#	DESCRIPTION	QTY
1	303044-853	ASSEMBLY, WELD, CLUTCH HANDLE	1
2	120238	NUT, 1/2-13 HEXJAM	1
3	304438	KNOB, SHIFT NOMA, 1/2-13, BLACK	1
4	9129	CLIP, RETAINER BRACKET	2
5	44811	SCREW, 1/4-20 X .75 WAHTAP	2
6	1288	BRACKET, CABLE RETAINER	1
7	48306	PULLEY, POWDER METAL	1
8	57322	BOLT, .375 X .375 HSSH, 1/4-20	1
9	1502	NUT, 1/4-20 REGHEXCTRLK	1
10	301491	ASSEMBLY, CLUTCH CABLE, 39, SD, SUS	1
11	120613	NUT, 1/4-28 HJAM	1
12	35498	SCREW, 5/16-18 X .75 WAHTAP	1
13	57444	TIE, CABLE BLACK NYLON, 5.62 LONG	1
14	300158-853	LIFT ASSEMBLY, LH	1
15	300169-853	LIFT ASSEMBLY, RH	1
16	180079	SCREW, 5/16-18 X 1.00 HHC	1
17	58247	NUT, ADJUST	1
18	1498	NUT, 5/16-18 REGHEXCTRLK	1
19	417098	WASHER, FLAT .531 X 1.06 X .063	2
20	8260	PIN, HAIR .091 DIA X 1.66 LONG	2
21	58248-853	BRACKET, REAR HANG, SUSP	2
22	57072	BOLT, 5/16-18 X .63 CARRLN	4
23	1498	NUT, 5/16-18 REGHEXCTRLK	4
24	313926	BRACKET, HEIGHT ADJUST SUPPORT	1
25	180077	SCREW, 5/16-18 X .75 HHC	4
26	1498	NUT, 5/16-18 REGHEXCTRLK	4
31	180077	SCREW, 5/16-18 X .75 HHC	1
32	1498	NUT, 5/16-18 REGHEXCTRLK	1
33	301238	QUADRANT, HEIGHT ADJUST	1
34	180077	SCREW, 5/16-18 X .75 HHC	2
35	1498	NUT, 5/16-18 REGHEXCTRLK	2
36	322292-853	HANDLE, LIFT SHORT (30" S.F.)	1
37	300171	BOLT, .500 X .270 HSSH, 5/16-18	1
38	996418	WASHER, FLAT .506 X .75 X .024	1
39	44108	NUT, 5/16-18 HWDFLCTRLK	1
40	301239	PAWL, SQUARE	1
41	300171	BOLT, .500 X .270 HSSH, 5/16-18	1
42	44108	NUT, 5/16-18 HWDFLCTRLK	1
43	9435	POINTER, HEIGHT ADJUST	1
44	138479	WASHER, EXLK .195 X .41 X .03	1
45	35287	SCREW, #8-32 X .38 HHWATAP	1
46	303027	ROD, ACTUATOR-SHORT	1
47	58326	SPRING, HEIGHT ADJUST	1
48	58325	KNOB, HEIGHT ADJUST PUSH BUTTON	1
49	58329	GRIP, .750 OD W/ HOLE BLACK	1
50	9149	BRACKET, CABLE RETAINER	1
51	48306	PULLEY, POWDER METAL	1
52	58336	BOLT, .375 X .375 HSSH, 1/4-20	1
53	1502	NUT, 1/4-20 REGHEXCTRLK	1
54	314177	CABLE, LIFT, 22.92, F-5, 20 X 8-8	1
55	300310	PIN, CLEVIS .310 DIA+ .475 LONG	1
56	300311	RING, RET E .31 X .25 TRU 5133-31	1
57	120375	NUT, 1/4-20 REGHEX	1
58	48306	PULLEY, POWDER METAL	1
59	300317	PIN, CLEVIS .375 DIA X .81 LONG	1
60	8260	PIN, HAIR .091 DIA X 1.66 LONG	1
61	9405	CLEVIS, LIFT CABLE	1
62	120372	NUT, 1/4-20 REGSQ	1
63	39522	PIN, CLEVIS .312 X .812	1
64	121222	PIN, COTTER .090 DIA X .75 LONG	1
65	333903	LIFT COVER, F5, LF, SF, BLACK	1
66	300340	SCREW, #10 X .75 HHPLAST, BLACK	3
67	120392	WASHER, FLAT .281 X .63 X .065	1



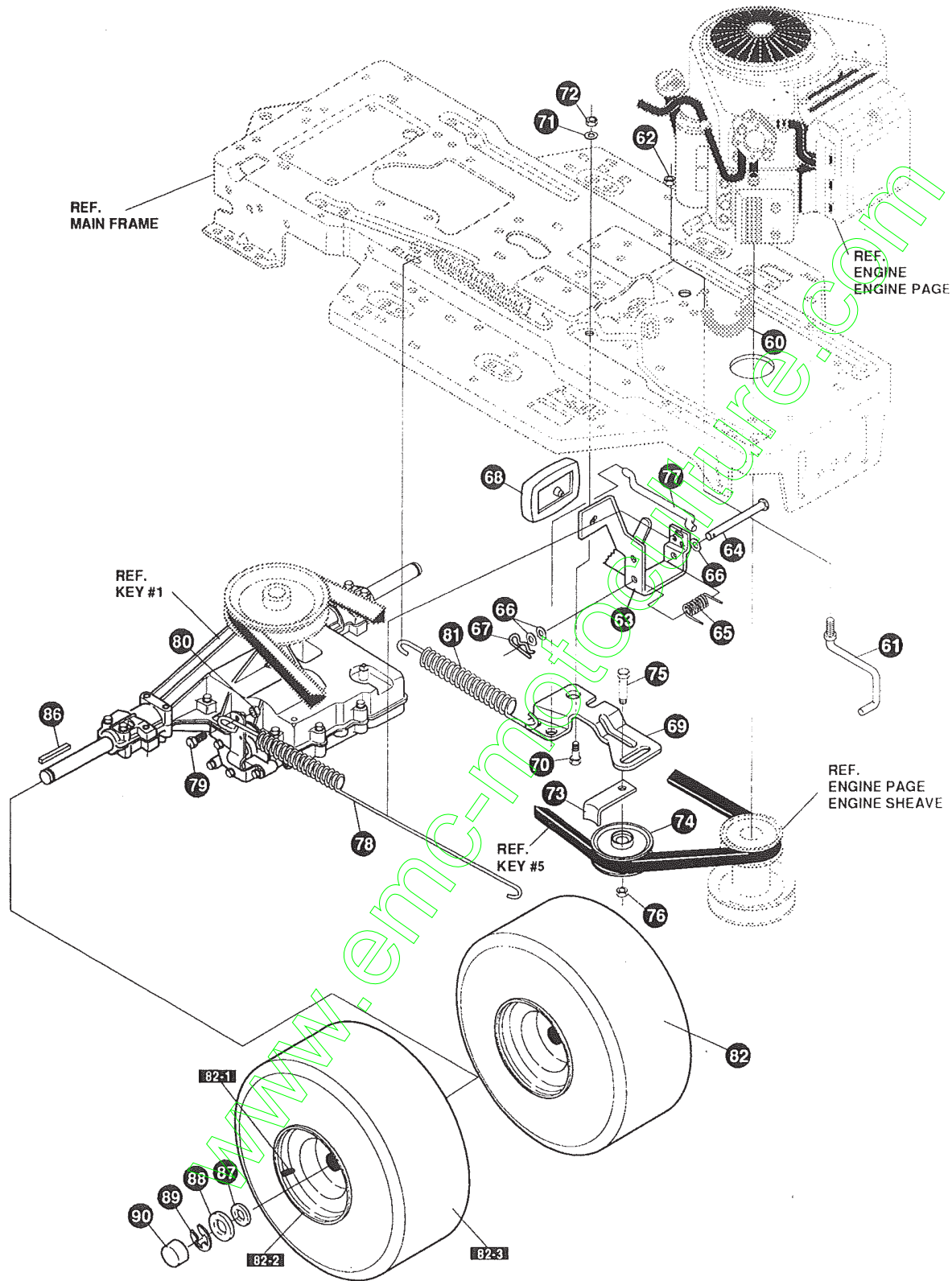
NOTE: ALWAYS USE ORIGINAL EQUIPMENT PARTS.
Use of service/replacement parts other than original equipment parts may void your warranty.

**ALL UNNUMBERED
ITEMS ARE INTERCHANGEABLE
WITH OPPOSITE SIDE**

327671 D

KEY#	PART#	DESCRIPTION	QTY
1	.	TRANSAXLE, 930-017A, 6SP, 2WS, LF	1
2	302745	PULLEY, 6.6 OD, V4L, T/A	1
3	50795	KEY, HI-PRO 606, .75 DIA X .187 WD	1
4	22053	RING, RETEX .58 X .035 TRU 5100-62	1
5	314120	BELT, V 4L, 87.25, 4WS, LF	1
6	180091	SCREW, 5/16-18 X 2.50 HHC	4
7	120393	WASHER, FLAT .344 X .69 X .065	8
8	1498	NUT, 5/16-18 REGHEXCTRLK	4
9	323739	BRACKET, STABILIZER, BLACK	1
10	50947	SCREW, 3/8-16 X 1.25 WAHTAP	1
11	35498	SCREW, 5/16-18 X .75 WAHTAP	2
12	120638	WASHER, HVSP TLK .328 X .60 X .09	2
13	180079	SCREW, 5/16-18 X 1.00 HHC	1
14	120393	WASHER, FLAT .344 X .69 X .065	1
15	1498	NUT, 5/16-18 REGHEXCTRLK	1
16	180077	SCREW, 5/16-18 X .75 HHC	1
17	138538	WASHER, REGINTLK .320 X .61 X .03	1
18	1498	NUT, 5/16-18 REGHEXCTRLK	1
19	319111	LEVER, SHIFT-LOWER, P930/4360, LF	1
20	310347-853	CLIP- SHIFT LEVER, .625 ROD	1
21	180077	SCREW, 5/16-18 X .75 HHC	1
22	996416	WASHER, FLAT .391 X 1.00 X .125	1
23	1498	NUT, 5/16-18 REGHEXCTRLK	1
24	310347-853	CLIP- SHIFT LEVER, .625 ROD	1
25	57259	GUIDE, BELT 5/16-18 THD	1
26	996416	WASHER, FLAT .391 X 1.00 X .125	1
27	1498	NUT, 5/16-18 REGHEXCTRLK	1
28	310356	BRACKET PIVOT, SHIFT LEVER	1
29	180020	SCREW, 1/4-20 X .75 HHC	2
30	1502	NUT, 1/4-20 REGHEXCTRLK	2
31	324798	LEVER, SHIFT UPPER, SOF, 1/2-13	1
32	310265	SPRING, TORSION, .56 X .95 X .095	1
33	137185	PIN, COTTER .125 DIA X 1.00 LONG	1
34	120238	NUT, 1/2-13 HEXJAM	1
35	306690	HANDLE, 1/2-13 MOLDED, BLACK	1
36	314965	LINK, TIE ROD, SHIFT, P930-6, SHORT	1
37	180124	SCREW, 3/8-16 X 1.25 HHC	1
38	1499	NUT, 3/8-16 REGHXCTRLK	1
39	309637	BRACKET, SHIFT, 5SP, SF	1
40	180124	SCREW, 3/8-16 X 1.25 HHC	1
41	120394	WASHER, FLAT .406 X .81 X .065	2
42	1499	NUT, 3/8-16 REGHXCTRLK	1
43	57157	WASHER, .750 X .250 SP-TRANSAXLE	1
44	56255	SCREW, 1/4-28 X .75 NYLHHC	1
45	311257-853	BRACKET, COVER, F-5, FENDER SHIFT	1
46	311209	COVER, PLASTIC, LF, P930/F4360-6	1
47	311331	SCREW, 1/4-15 X .44/53 HILOHHWA	2
48	1341	CLAMP, SPRING 1.17" ID	2
49	311331	SCREW, 1/4-15 X .44/53 HILOHHWA	2
50	120394	WASHER, FLAT .406 X .81 X .065	2

* CONTACT YOUR NEAREST TRANSAXLE DEALER FOR PARTS & SERVICE



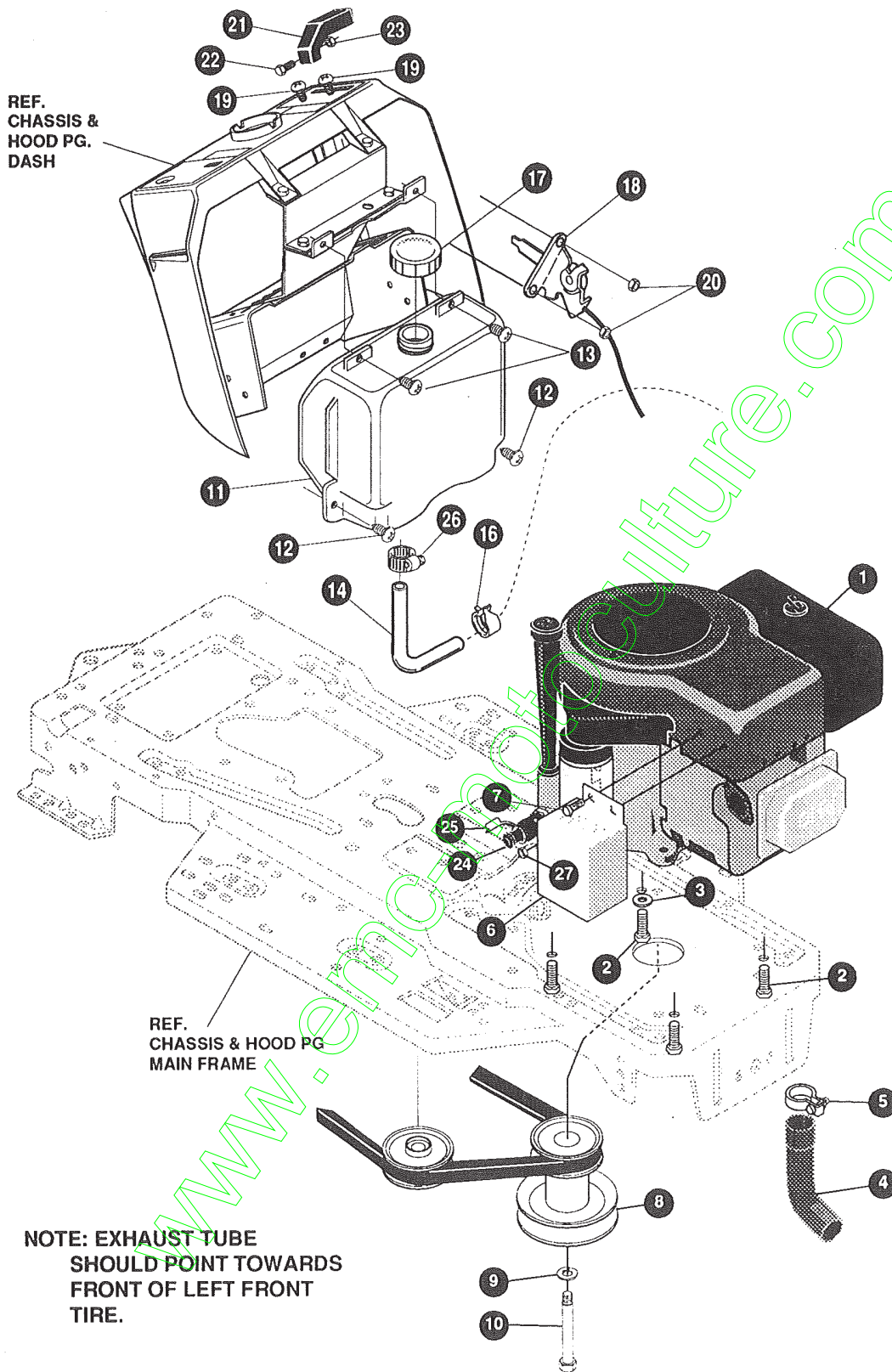
NOTE: ALWAYS USE ORIGINAL EQUIPMENT PARTS.
Use of service/replacement parts other than original equipment parts may void your warranty.

ALL UNNUMBERED ITEMS ARE INTERCHANGEABLE WITH OPPOSITE SIDE

327671 D

KEY#	PART#	DESCRIPTION	QTY
60	321514	SPRING, DRAG LINK BIAS	1
61	304016	GUIDE, BELT, RH	1
62	1498	NUT, 5/16-18 REGHEXCTRLK	1
63	325942	PEDAL ASSEMBLY, BRAKE/CLUTCH, LF	1
64	319675	PIN, CLEVIS .500 D X 4.53 LONG	1
65	57847	SPRING, BRAKE PEDAL	1
66	2968	WASHER, FLAT .504 X .75 X .059	3
67	56180	PIN, HAIR .091 DIA X 1.62 LONG	1
68	48160	PAD, CLUTCH, BRAKE W/PRINTING	1
69	320381	ARM, IDLER, TRACTION, SOG, LF	1
70	329989	BOLT, .625 X .135 HHSH, 5/16-18	1
71	45602	WASHER, FLAT .333 X .87 X .119	1
72	1498	NUT, 5/16-18 REGHEXCTRLK	1
73	39659	RETAINER, BELT	1
74	35374	PULLEY, IDLER V4L, 3.06 X .62	1
75	45892	BOLT, 3/8-16 X 1.50 CARRSN	1
76	1499	NUT, 3/8-16 REGHXCTRLK	1
77	57204	ROD, CLUTCH 3.92"	1
78	325937	SPRING, BRAKE, 28.80 930, 4360	1
79	326131	BOLT, .495 X .31 HHSH, 5/16-18	1
80	1498	NUT, 5/16-18 REGHEXCTRLK	1
81	330505	SPRING, CLUTCH .113 X .750 X 8.75	1
82	*	TIRE & RIM, 20 X 10.00-8	2
82-1	24167	VALVE STEM	
82-2	301366	RIM, WHEEL	
82-3	319686	TIRE, 20 X 10 -8	
86	52928	KEY, SQUARE .187 SQUARE X 2.25 LONG	2
87	642	WASHER, FLAT .755 X 1.31 X .075	4
88	42815	WASHER, FLAT .755 X 1.53 X .07	2
89	36625	RING, RETEX .57 X .05 TRU 5133-75	2
90	40394	HUB CAP, 1.500 ID X 7/8 LONG	2

* ORDER INDIVIDUAL PARTS



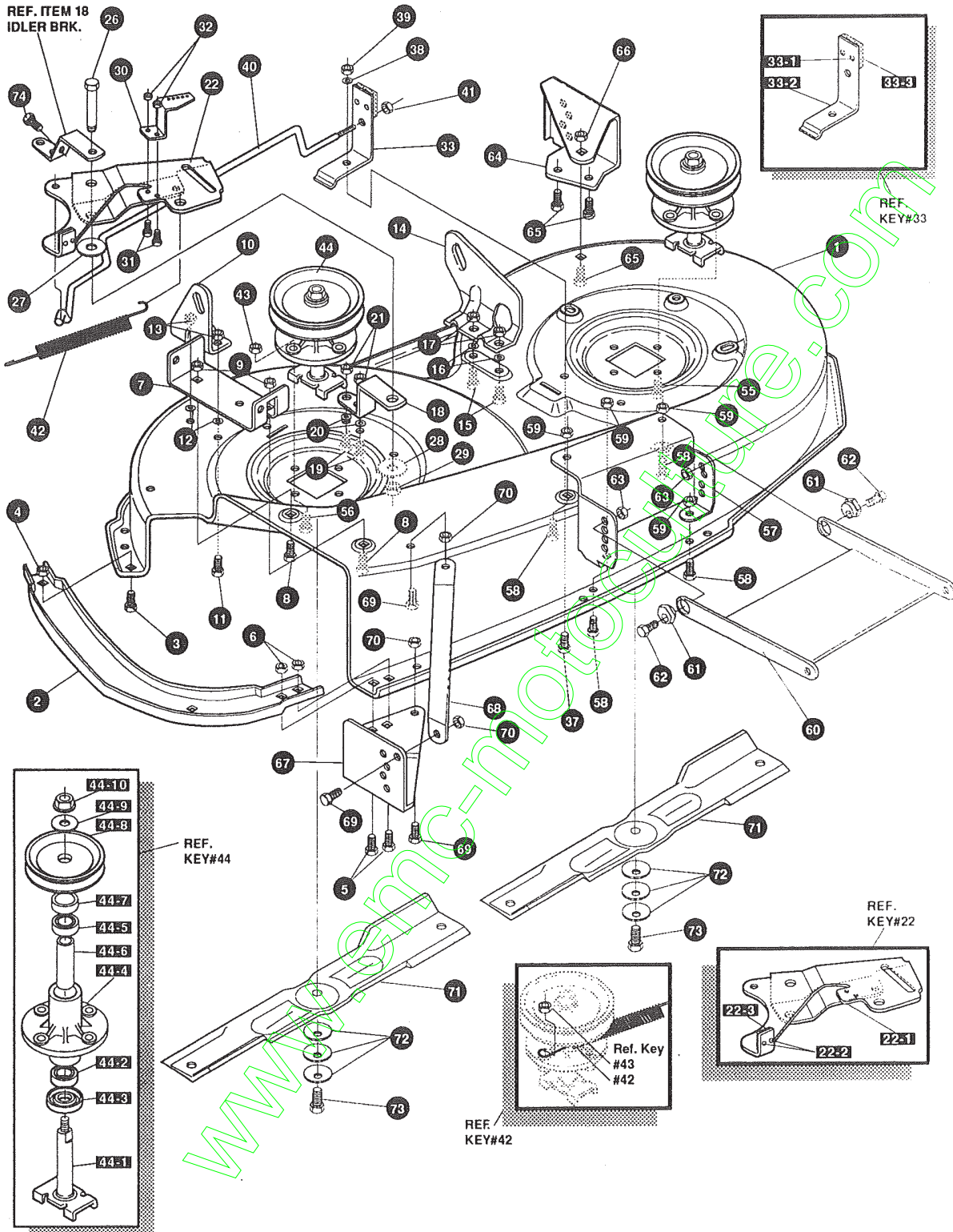
NOTE: ALWAYS USE ORIGINAL EQUIPMENT PARTS. Use of service/replacement parts other than original equipment parts may void your warranty.

ALL UNNUMBERED ITEMS ARE INTERCHANGEABLE WITH OPPOSITE SIDE

332586 B

KEY#	PART#	DESCRIPTION	QTY
1	*	ENGINE, 14.0HP, B&S, IC, OHV DUAL CIRCUIT	1
2	50947	SCREW, 3/8-16 X 1.25 WAHHTAP	4
3	138489	WASHER, EXLK .384 X .69 X .04	1
4	327868	EXHAUST TUBE, 14HP, OHV, B&S, LF, H15	1
5	328024	CLAMP EXHAUST, 1.37 DIA	1
6	327785-853	HEAT SHIELD 14HP, OHV, B/S	1
7	995346	SCREW, 1/4-20 X .50 WAHHTAP	3
8	328028	PULLEY, ENGINE, 3.0 D X 4.0 LONG X 5.0 D	1
9	120383	WASHER, REGSPTLK .459 X .78 X .12	1
10	433146	SCREW, 7/16-20 X 4.25 HHC, BLACK	1
11	314991	TANK, FUEL 2-GALLON, CLEAR	1
12	300303	SCREW, .25 X .75 X .51 HHWAPLASTITE	2
13	995346	SCREW, 1/4-20 X .50 WAHHTAP	2
14	50118	TUBING, .25 X .50 X BULK GAS LINE	14.0"
16	47345	CLAMP, HOSE SCREW TYPE	1
17	300304	CAP, GAS, 2.0 THROAT	1
18	303159	THROTTLE CONTROL, 11HP, B&S	1
19	320553	SCREW, 10-24 X .63 PHPNMA CRSS	2
20	308459	NUT, #10-24 HXHDNYLK	2
21	300508	KNOB, THROTTLE CONTROL, GP STYLE	1
22	159585	SCREW, #8-32 X .38 PHPNMA	1
23	120622	NUT, #8-32 REGHX	1
24	325547	OIL DRAIN VALVE ASSEMBLY	1
25	327422	CAP, OIL DRAIN VALVE ASSEMBLY, YELLOW	1
26	47345	CLAMP, HOSE SCREW TYPE	1
27	124818	NUT, 1/4-20 REGHXJAM	1

* SEE ENGINE MANUAL

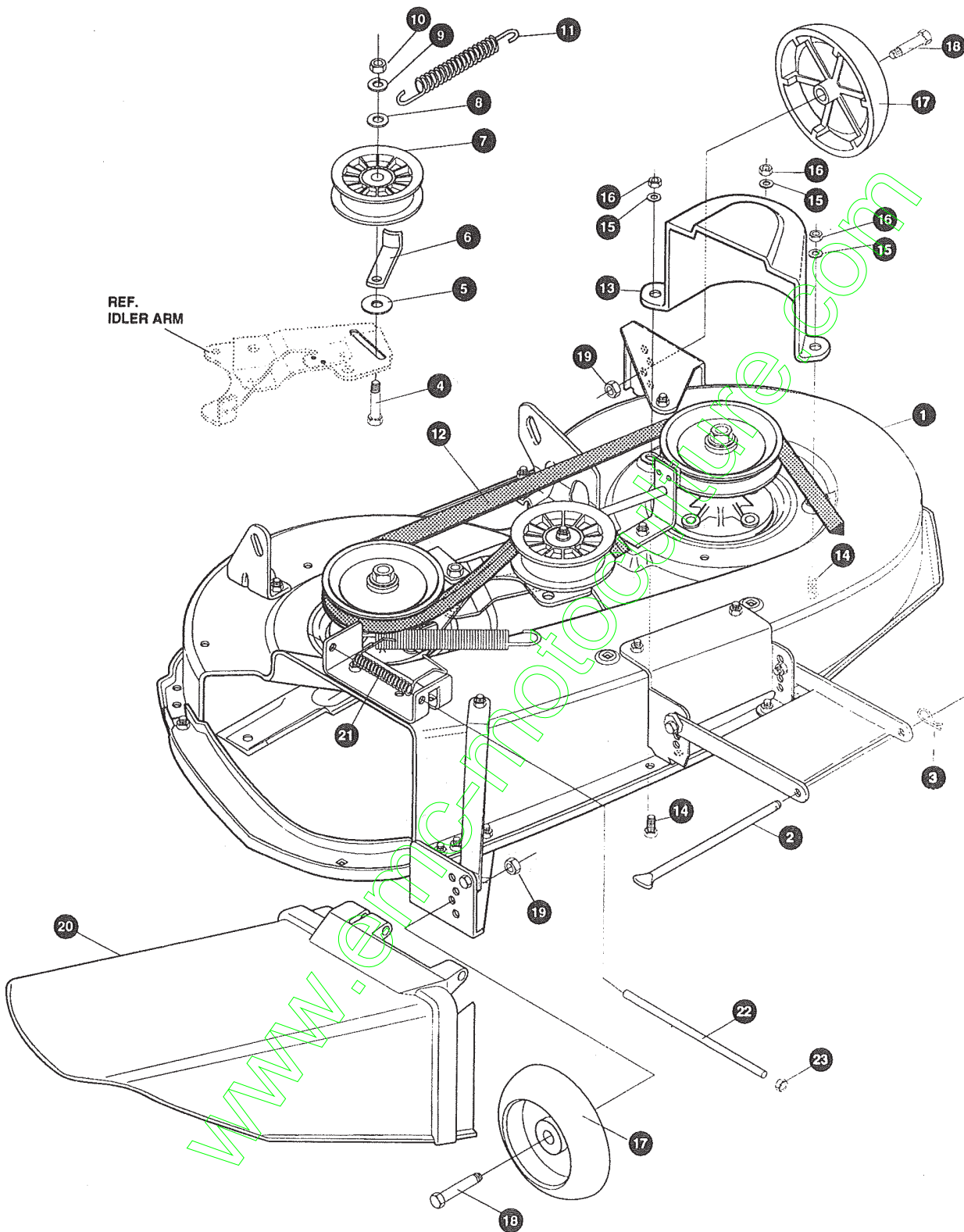


NOTE: ALWAYS USE ORIGINAL EQUIPMENT PARTS.
Use of service/replacement parts other than original equipment parts may void your warranty.

**ALL UNNUMBERED
ITEMS ARE INTERCHANGEABLE
WITH OPPOSITE SIDE**

320109 H

KEY#	PART#	DESCRIPTION	QTY
1	325103	40" DECK KIT	1
2	326480	TOE GUARD - MULCHER	1
3	180077	SCREW, 5/16-18 X .75 HHC	1
4	1498	NUT, 5/16-18 REGHEXCTRLK	1
5	180077	SCREW, 5/16-18 X .75 HHC	2
6	1498	NUT, 5/16-18 REGHEXCTRLK	2
7	317017	BRACKET CHUTE MOUNT, BLACK	1
8	180077	SCREW, 5/16-18 X .75 HHC	2
9	1498	NUT, 5/16-18 REGHEXCTRLK	2
10	313929	LIFT BRACKET, REAR, RH, BLACK	1
11	180077	SCREW, 5/16-18 X .75 HHC	2
12	120393	WASHER, FLAT .344 X .69 X .065	2
13	1498	NUT, 5/16-18 REGHEXCTRLK	2
14	310667	BRACKET, DECK, LIFT, REAR, LH, BLACK	1
15	180077	SCREW, 5/16-18 X .75 HHC	2
16	120393	WASHER, FLAT .344 X .69 X .065	2
17	1498	NUT, 5/16-18 REGHEXCTRLK	2
18	326893	BRACE, IDLER SUPPORT, 40", 43"	1
19	180077	SCREW, 5/16-18 X .75 HHC	2
20	120393	WASHER, FLAT .344 X .69 X .065	2
21	44108	NUT, 5/16-18 HWDFLCTRLK	2
22	320576	IDLER ARM ASSEMBLY	1
22-1	322116	ARM, IDLER, 40/43" DECK	1
22-2	41601	RIVET, OVSET .187 DIA X .50 LONG	2
22-3	306973	BRAKE PAD - HARD-NF343 (X-31)	1
26	304420	BOLT, .500 X 2.15 HSSH	1
27	996307	WASHER, FLAT .391 X 1.00 X .209	1
28	996416	WASHER, FLAT .391 X 1.00 X .125	2
29	45171	NUT, 3/8-16 HWDFL WHIZ LOCK	1
30	326249	BRACKET, EXTENSION IDLER	1
31	180077	SCREW, 5/16-18 X .75 HHC	2
32	1498	NUT, 5/16-18 REGHEXCTRLK	2
33	321828	BLADE BRAKE ASSEMBLY	1
33-1	135624	RIVET, TRSET .185 DIA X .41 LONG	2
33-2	304119	BRAKE ARM	1
33-3	306973	BRAKE PAD - HARD-NF343 (X-31)	1
37	180077	SCREW, 5/16-18 X .75 HHC	1
38	120393	WASHER, FLAT .344 X .69 X .065	1
39	1498	NUT, 5/16-18 REGHEXCTRLK	1
40	302714	ROD, BRAKE	1
41	1502	NUT, 1/4-20 REGHEXCTRLK	1
42	35410	SPRING, .071 X .62 X 4.37	1
43	1498	NUT, 5/16-18 REGHEXCTRLK	1
44	56424	QUILL ASSEMBLY, 36/39/40/43	2
44-1	56425	SHAFT/SADDLE 36"	1
44-2	49562	BEARING, BALL 6203-2AA-C3 ARMORED	1
44-3	50616	DUST SHIELD	1
44-4	55547	QUILL CASTING (1046)	1
44-5	49562	BEARING, BALL 6203-2AA-C3 ARMORED	1
44-6	50818	SPACER, SLEEVE .669 X .88 X 3.797	1
44-7	51449	SPACER, SLEEVE .672 X .93 X .438	1
44-8	313898	PULLEY ASSEMBLY	1
44-9	56365	WASHER, SPECIAL QUILL	1
44-10	1282	NUT, 7/16-20 WDFLLK	1
55	35498	SCREW, 5/16-18 X .75 WAHTAP	7
56	300345	SCREW, 5/16-18 X 1.38 WAHTAP	1
57	318445	BRACKET, 40, LF, FRONT DECK	1
58	180077	SCREW, 5/16-18 X .75 HHC	4
59	1498	NUT, 5/16-18 REGHEXCTRLK	4
60	58305	BRACKET, LINK, DECK FRONT	1
61	58247	NUT, ADJUST	2
62	180079	SCREW, 5/16-18 X 1.00 HHC	2
63	1498	NUT, 5/16-18 REGHEXCTRLK	2
64	317041	BRACKET, GAGE WHEEL, LH, BLACK	1
65	180077	SCREW, 5/16-18 X .75 HHC	3
66	1498	NUT, 5/16-18 REGHEXCTRLK	3
67	322464	BRACKET, GAGE WHEEL, RH, FRONT	1
68	314282	BRACKET, STABILIZER	1
69	180077	SCREW, 5/16-18 X .75 HHC	3
70	1498	NUT, 5/16-18 REGHEXCTRLK	3
71	313316	BLADE, 40", STD-LIFT, 20.32, BLACK	2
72	2483	WASHER, .39 ID X 1.25 D X .07 BELLVIL	6
73	39573	SCREW, 3/8-24 X 1.00 NYLHHC	2
74	308231	SCREW, 1/4-20 X 1.25 HHWATAP	1



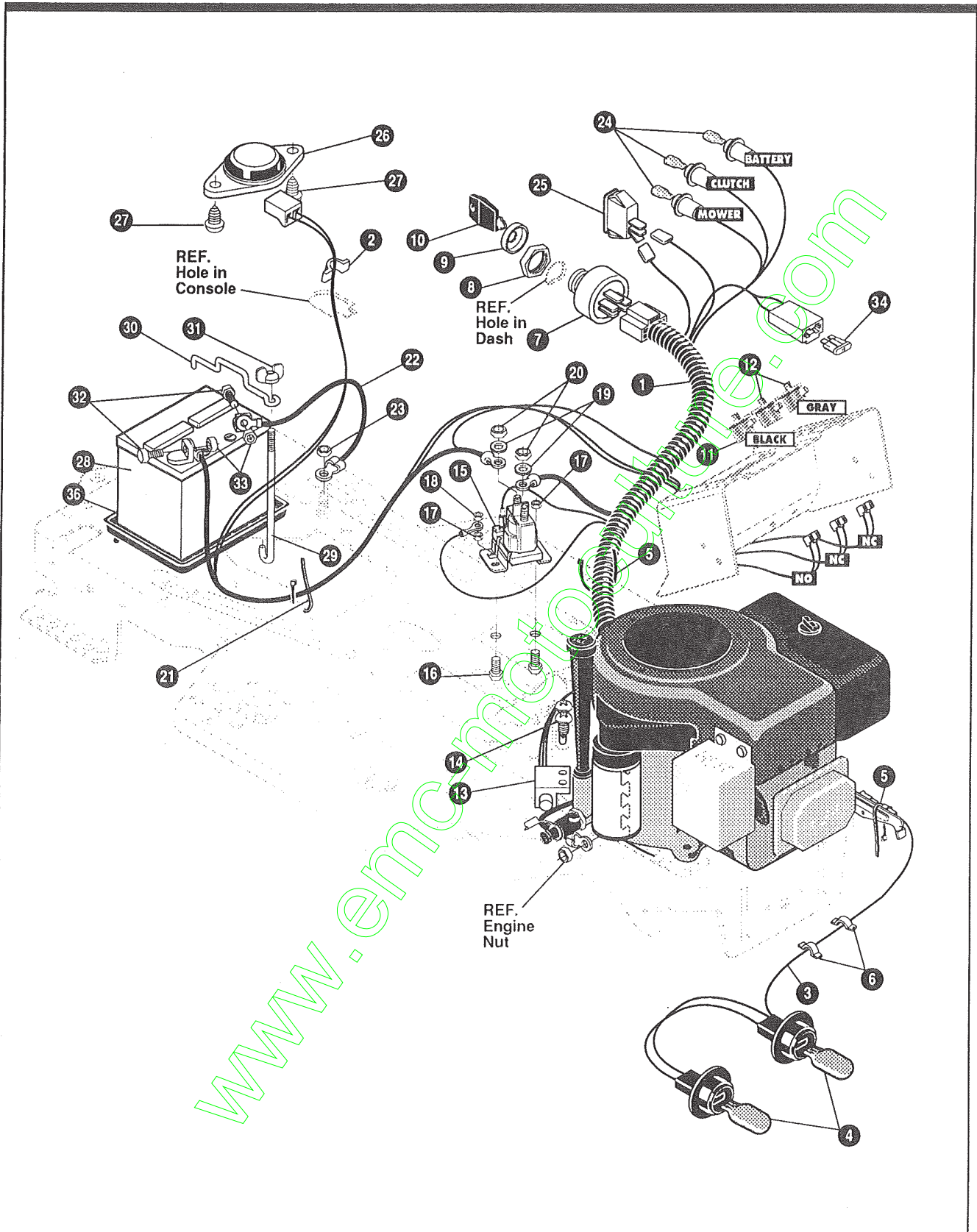
NOTE: ALWAYS USE ORIGINAL EQUIPMENT PARTS.
 Use of service/replacement parts other than original
 equipment parts may void your warranty.

**ALL UNNUMBERED
 ITEMS ARE INTERCHANGEABLE
 WITH OPPOSITE SIDE**

325682 B

KEY#	PART#	DESCRIPTION	QTY
1	329035	ASSEMBLY, 40", SUS, DECK, EXPORT	1
2	58306	ROD, DECK HITCH	1
3	8260	PIN, HAIR .091 DIA X 1.66 LONG	1
4	57325	BOLT, 3/8-16 X 2.00 CARBON	1
5	25210	WASHER, FLAT .386 X 1.25 X .09	1
6	1346	RETAINER, BELT	1
7	310326	PULLEY, IDLER BFF, 4.00, WIDE FLANGE	1
8	996307	WASHER, FLAT .391 X 1.00 X .209	1
9	120382	WASHER, REGSPTLK .393 X .68 X .10	1
10	120377	NUT, 3/8-16 REGHX	1
11	300473	SPRING, TENSION 7.52 LONG+17 LB/IN	1
12	319005	BELT, V 5L, 81.00, DECK, 40, LF	1
13	328257	GUARD, BELT, LH, PLASTIC	1
14	180077	SCREW, 5/16-18 X .75 HHC	3
15	120393	WASHER, FLAT .344 X .69 X .065	3
16	1498	NUT, 5/16-18 REGHEXCTRLK	3
17	302611	GAUGE WHEEL, EURO, 6.00 OD X 1.38 WD	2
18	23763	BOLT, .500 X 1.390 HHSH, 3/8-16	2
19	1499	NUT, 3/8-16 REGHXCTRLK	2
20	304422	CHUTE DEFLECTOR, 40", 42" & 43"	1
21	314975	SPRING, TORSION, CHUTE DEFLECTOR	1
22	304424	ROD, PIVOT DECK, .312 D X 7.25	1
23	3535	NUT, PUSH ON CAP .312 OD	1

www.emc.com



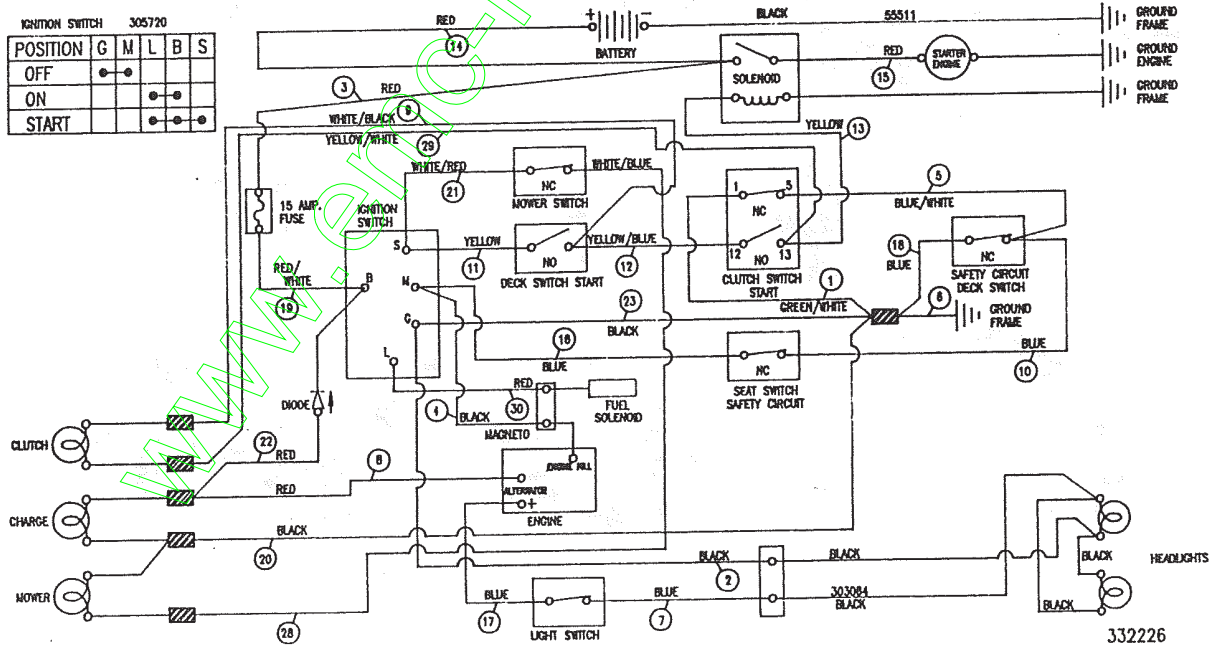
NOTE: ALWAYS USE ORIGINAL EQUIPMENT PARTS.
 Use of service/replacement parts other than original equipment parts may void your warranty.

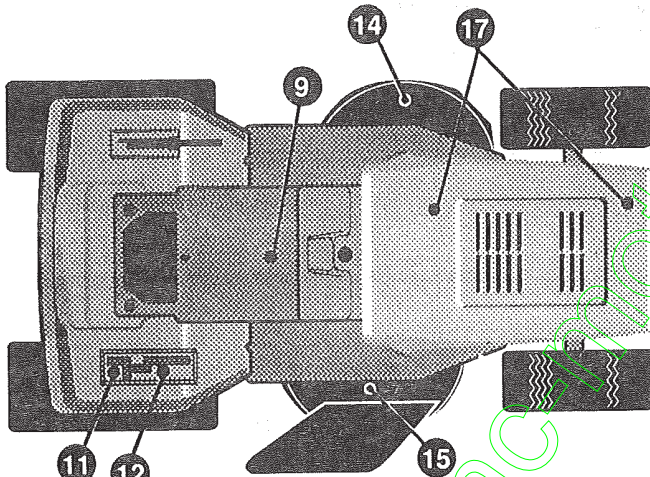
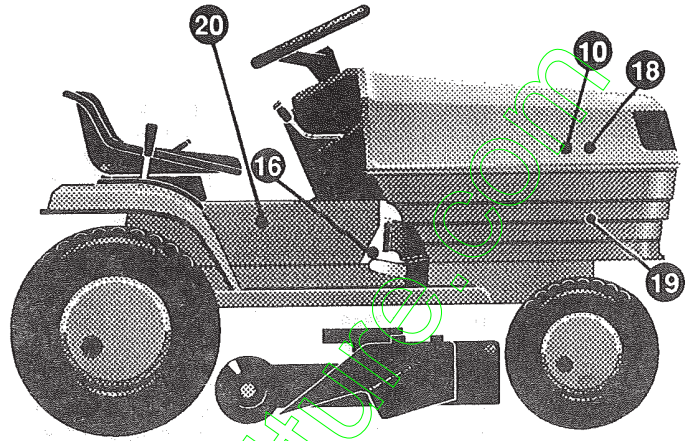
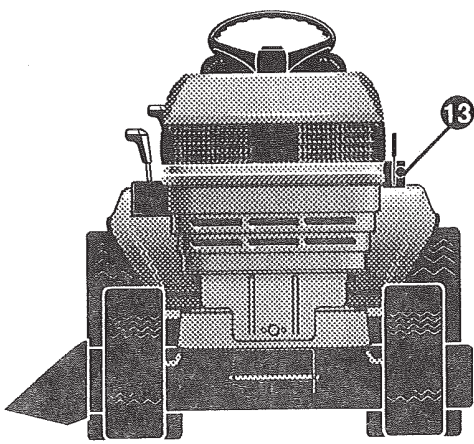
**ALL UNNUMBERED
 ITEMS ARE INTERCHANGEABLE
 WITH OPPOSITE SIDE**

332572 D

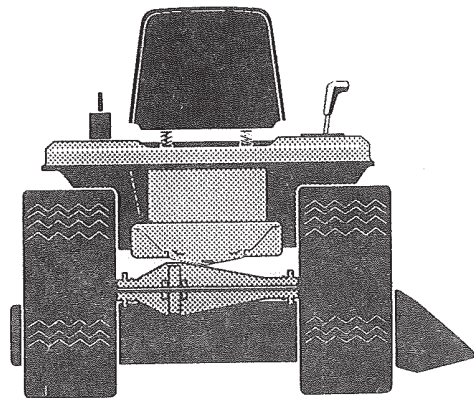
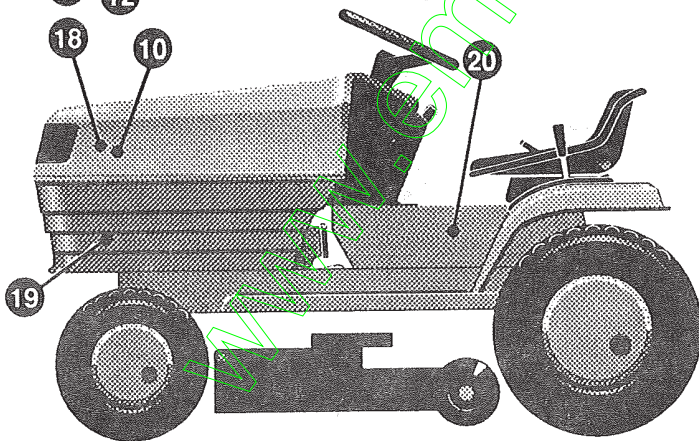
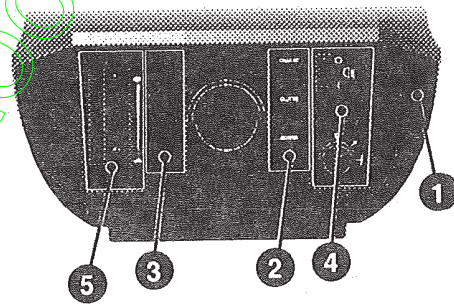
KEY#	PART#	DESCRIPTION	QTY
1	332226	HARNESS, 14HP, OHV, B&S, H11/G14, WRAP, LF	1
2	41482	PRESS CLIP, 1.380 LONG .255 ID	1
3	303064	ASSEMBLY, LIGHT WIRE-1/4 TURN	1
4	52572	BULB, HEADLAMP	2
5	57444	TIE, CABLE BLACK NYLON, 5.62 LONG	2
6	41482	PRESS CLIP, 1.380 LONG .255 ID	2
7	327355	SWITCH-IGNITION (AFTER FIRE) 3 POSITION	1
8	327352	NUT, 5/8-8 ACME DELTA FOR BOOT	1
9	300194	BOOT, IGNITION SWITCH	1
10	327350	KEY, IGNITION	2
11	326653	SWITCH, SNAP MOUNT, NO .055/.116 GRAY	1
12	326654	SWITCH, SNAP MOUNT, NC .140 BLUE	2
13	57476	SWITCH, SCREW MOUNT, DP, NC, NO BLACK	1
14	57220	SCREW, #12 X .50 PHPNHTAP, BLACK	2
15	53716	SOLENOID	1
16	187745	SCREW, 1/4-20 X .75 HXSEMMA	2
17	1502	NUT, 1/4-20 REGHEXCTRLK	2
18	271172	NUT, 1/4-20 REGHEXKEPS	1
19	138485	WASHER, EXLK .320 X .61 X .03	2
20	120368	NUT, 5/16-24 REGHEX	2
21	57444	TIE, CABLE BLACK NYLON, 5.62 LONG	1
22	55511	WIRE, GROUND, 12.5"	1
23	271184	NUT, 5/16-18 HEXKEPS	1
24	57769	BULB, INDICATOR	3
25	300334	LIGHT SWITCH, ON/OFF, PANEL MOUNT	1
26	57547	SWITCH, SEAT	1
27	160505	SCREW, 1/4-20 X .38 PHPNHMA	2
28	92693	BATTERY, 12V	1
29	57551	ROD, BATTERY	1
30	57552	ROD, BATTERY, TOP	1
31	325232	NUT, WING 1/4-20 NYLON	1
32	180020	SCREW, 1/4-20 X .75 HHC	2
33	271172	NUT, 1/4-20 REGHEXKEPS	2
36	91895	TRAY - BATTERY	1

SCHEMATIC DRAWING





DASH OVERVIEW



KEY#	PART#	DESCRIPTION	QTY
1	68900	DECAL, BLADE ENGAGE, EUROPE	1
2	300445	DECAL, DASH, RH, TRANSLUCENT	1
3	302049	DECAL, DASH, LH, PLAIN	1
4	305766	DECAL, DASH, RH, IGNITION	1
5	305767	DECAL, DASH, LH	1
9	402689	DECAL, CONSOLE, SYMBOLIC CAUTION	1
10	307065	NAMEPLATE, TURBOGREEN CHROME	2
11	311394	DECAL, SHIFT REVERSE/NEUTRAL	1
12	331005	DECAL, SHIFTER POSITION, P930-6	1
13	402214	DECAL, HEIGHT ADJUST	1
14	402700	DECAL, CAUTION DECK, LH	1
15	402701	DECAL, CAUTION DECK, RH	1
16	402702	DECAL, BRAKE/CLUTCH	1
17	305602	FOAM HOOD 4 X 15	2
18	305603	PAD, 18 X 6 FOAM HOOD	2
19	305604	FOAM, HOOD 7X12	2
20	402662	NAMEPLATE, 14.5/40 CHROME	2

www.emc-motors.com

www.emc-motoculture.com