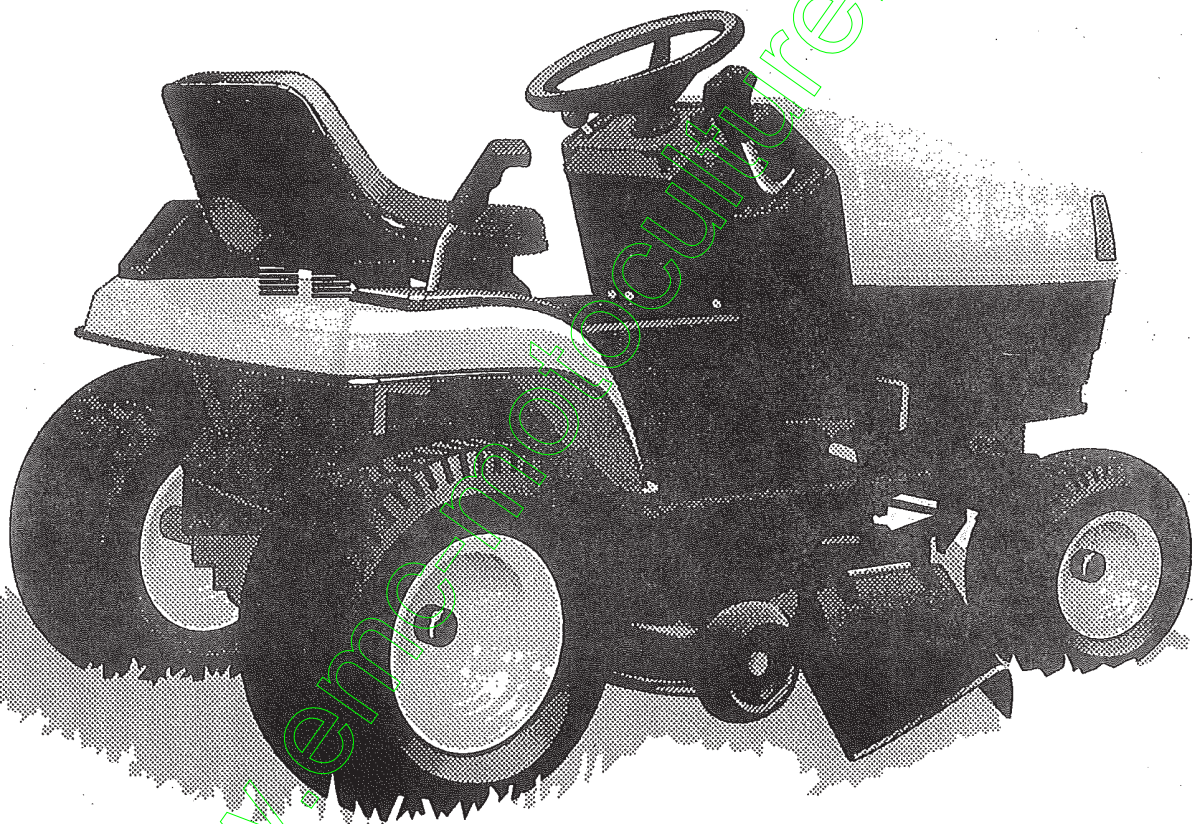


MANUEL

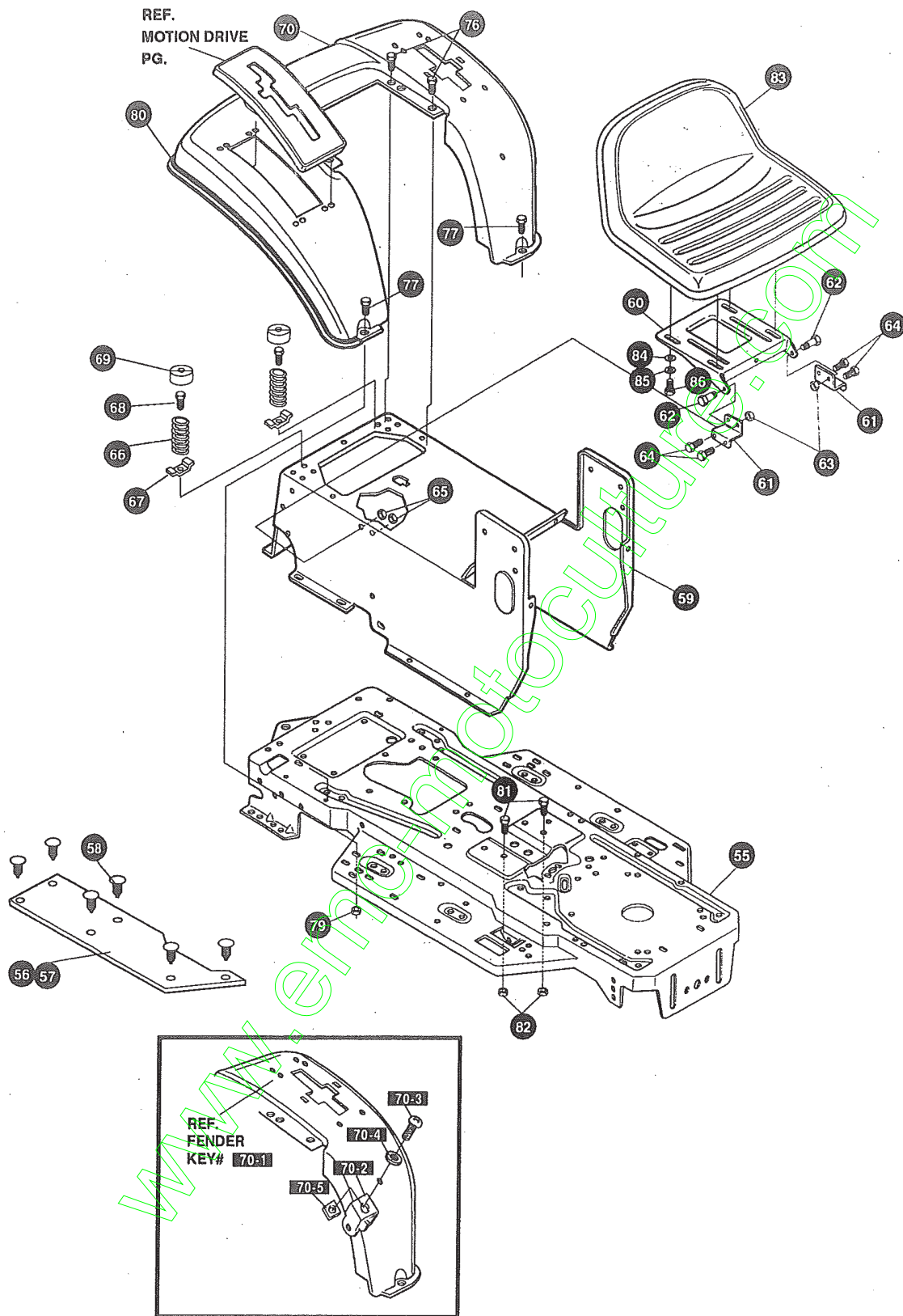
PIÈCES DE RECHANGE

Tracteurs



TONDEUSE AUTOPORTEE
Modèle F3560-220

KEY#	PART#	DESCRIPTION	QTY
1	326569-853	BRACKET, GRILLE, LH	1
2	326568-853	BRACKET, GRILLE, RH	1
3	313541-853	BRACKET, FRONT AXLE	1
4	56030	SCREW, 5/16-18 X .75 WDFLLK	5
5	55273	NUT, 5/16-18 WDFLLKLRG, WHIZ	5
6	300440	GUIDE, BELT, RIDER	1
7	1498	NUT, 5/16-18 REGHEXCTRLK	1
8	308207	BOLT, .625 X 2.18 HSSH, 1/2-13	1
9	309008	NUT, 1/2-13 HEXJAM CTRLK	1
10	180138	SCREW, 3/8-16 X 3.00 HHC	2
11	2483	WASHER, .39 ID X 1.25 D X .07 BELLVIL	2
12	1499	NUT, 3/8-16 REGHXCTRLK	2
13	300635	GUIDE, BELT SHORT 15" WHEEL	1
14	124824	NUT, 5/16-18 HEXJAM	1
15	271190	NUT, 3/8-16 HEXKEPS	1
16	46763	RIVET, POP .187 DIA X .450 LONG	3
17	35497	SCREW, 5/16-18 X .50 WAHTAP	2
18	995346	SCREW, 1/4-20 X .50 WAHTAP	70
19	58312-853	SUPPORT, DASH, STEEL	1
20	300303	SCREW, .25 X .75 X .51 HHWAPLASTITE	2
21	300201-853	BRACE, DASH SUPPORT LOWER	1
22	1502	NUT, 1/4-20 REGHEXCTRLK	1
23	302530-853	BRACKET, GAS TANK	1
24	995346	SCREW, 1/4-20 X .50 WAHTAP	2
25	300264-853	BRACE, DASH SUPPORT, UPPER	1
26	995346	SCREW, 1/4-20 X .50 WAHTAP	2
27	305429	DASH, GP W/O GRAPHIC, W/CHOKE, BLACK	1
28	995346	SCREW, 1/4-20 X .50 WAHTAP	4
29	316868	WASHER, SHOULDER NYLON, .255 X .46	4
30	44811	SCREW, 1/4-20 X .75 WAHTAP	1
31	1502	NUT, 1/4-20 REGHEXCTRLK	1
32	307033	HOOD, H-11, PLASTIC	1
33	318197	PAD, ADHESIVE 1.00 X 1.50 X .12	4
34	303037	GRILLE, LOWER, GPWR, LG G-14	1
35	300302	SCREW, #10 X .50 HHTAPPST, BLACK	4
36	310203	CLIP, HOG RING C-SHAPED	1
37	301425	BRACE, HOOD SUPPORT, H-11, GP	1
38	301542	SCREW, 10-24 X 1.00 HWATAP	4
39	308459	NUT, #10-24 HXHDNYLK	4
40	302333	LENS, SMOKED W/TAB, NO LOGO	1
43	57796	SCREW, #6 X .50 PLASTITE/HI-LO	4
44	56676	BOLT, .375 X .580 HSSH, 5/16-18	2
45	1498	NUT, 5/16-18 REGHEXCTRLK	2
46	57478	SPRING, HOOD LATCH	2
47	180079	SCREW, 5/16-18 X 1.00 HHC	2
48	1498	NUT, 5/16-18 REGHEXCTRLK	2
49	330848	STEERING WHEEL	1
50	456378	PIN, SPRING .250 DIA X 2.00 LONG	1
51	301413	SPACER, STEERING SHAFT	2
52	301541	FOIL, REFLECTOR LENS, H-11, LH	1
53	301540	FOIL, REFLECTOR LENS, H-11, RH	1
	336714	PARTS MANUAL	1
	335155	OPERATOR'S MANUAL (FRENCH)	1



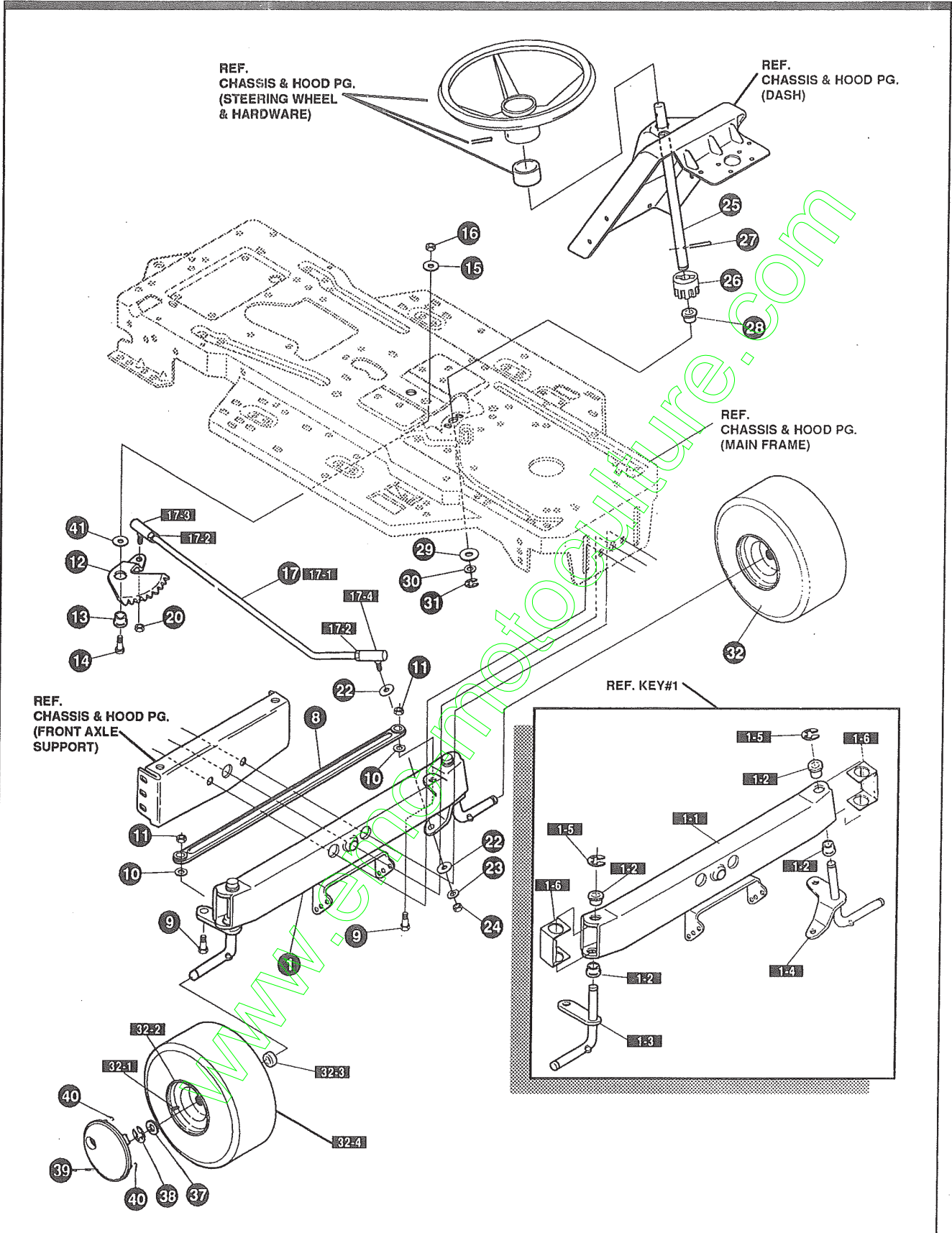
NOTE: ALWAYS USE ORIGINAL EQUIPMENT PARTS.
 Use of service/replacement parts other than original equipment parts may void your warranty.

ALL UNNUMBERED ITEMS ARE INTERCHANGEABLE WITH OPPOSITE SIDE

325904 C

KEY#	PART#	DESCRIPTION	QTY
55	335697-860	FRAME, LF, MAIN, P920/F4360	1
56	310005	FOOT PAD, LH, 22.12 LONG, DYNA, F-5	1
57	310006	FOOT PAD, RH, 22.12 LONG, DYNA, F-5	1
58	309235	FASTENER, RATCHET, BLACK	12
59	327575-860	CONSOLE, NON-WALK THRU, LF, SOF	1
60	58367-860	PLATE, SEAT, F5, SF, LF	1
61	310660-860	BRACKET, F-5, SEAT SUPPORT	2
62	20507	BOLT, .437 X .156 HSH, 5/16-18	2
63	1498	NUT, 5/16-18 REGHEXCTRLK	2
64	48901	SCREW, 5/16-18 X .63 WAHHC	4
65	1498	NUT, 5/16-18 REGHEXCTRLK	4
66	57153	SPRING, SEAT 2.63 LONG, 1.49 OD, BLACK	2
67	1341	CLAMP, SPRING 1.17"ID	2
68	44811	SCREW, 1/4-20 X .75 WAHTAP	2
69	56907	COVER, SEAT SPRING 1.5 ID X 1.0 LONG	2
70	*	ASSEMBLY, FENDER, F5, LF, SOF, SUSP	1
70-1	327471-860	FENDER, F5, SUS, LF, SOF	1
70-2	9239	CLEVIS	1
70-3	439455	SCREW, 5/16-18 X .56 PHPNMA	1
70-4	301551	WASHER, .344 ID X 1.50 D X .09	1
70-5	120373	NUT, 5/16-18 SQUARE	1
76	995346	SCREW, 1/4-20 X .50 WAHTAP	4
77	126358	BOLT, 5/16-18 X 1.00 CARRLN	2
79	55273	NUT, 5/16-18 WDFLLKLRG WHIZ	2
80	55023	TRIM STRIP, BLACK—SMALL, W/ ADH	77.5
81	180079	SCREW, 5/16-18 X 1.00 HHC	2
82	1498	NUT, 5/16-18 REGHEXCTRLK	2
83	57455	SEAT, MICHIGAN GEN, W/SW HOLE	1
84	120393	WASHER, FLAT .344 X .69 X .065	4
85	120638	WASHER, HVSPTLK .328 X .60 X .09	4
86	180077	SCREW, 5/16-18 X .75 HHC	4

* ORDER INDIVIDUAL PARTS - ASSEMBLY NOT AVAILABLE



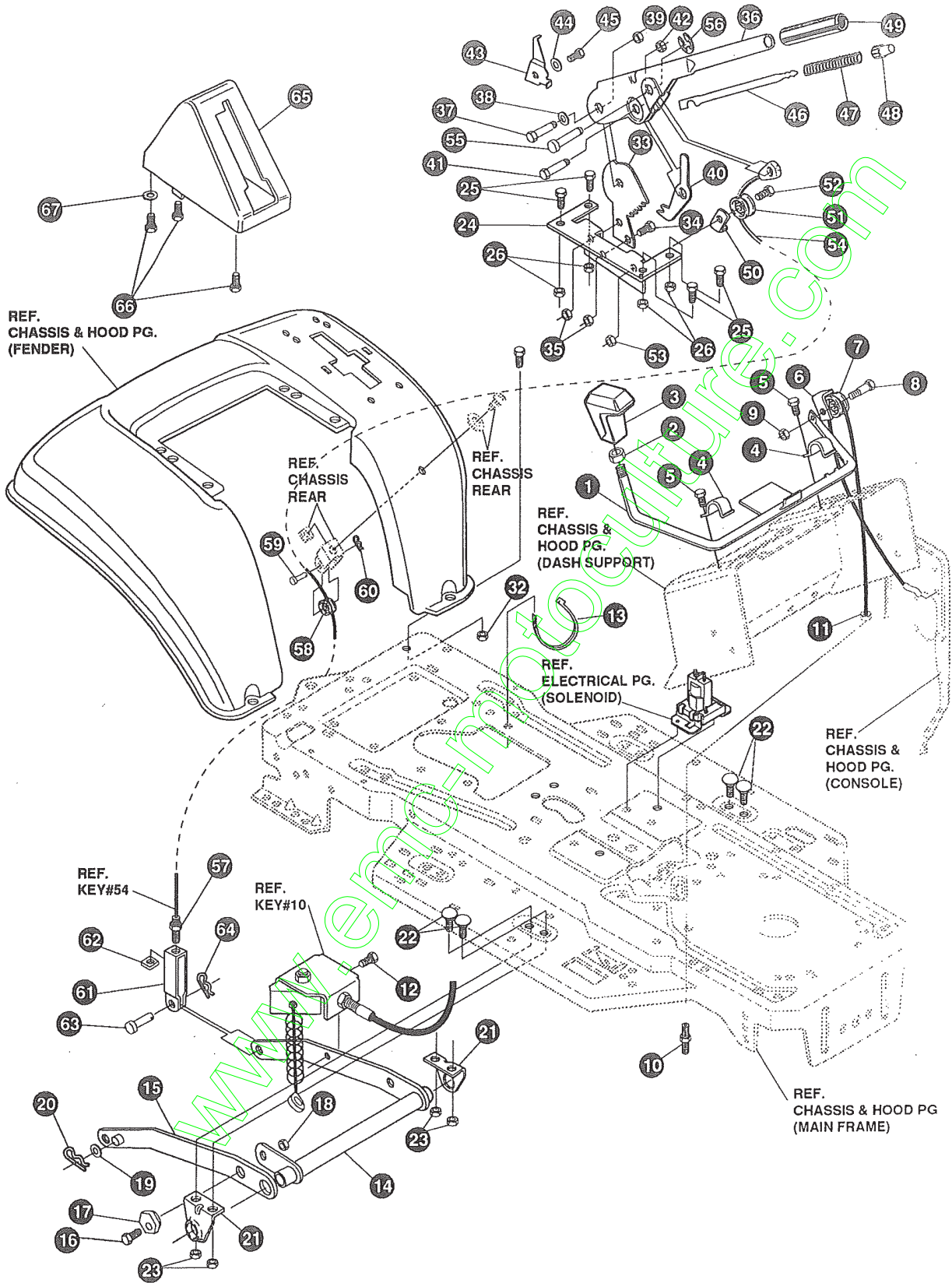
NOTE: ALWAYS USE ORIGINAL EQUIPMENT PARTS.
 Use of service/replacement parts other than original equipment parts may void your warranty.

ALL UNNUMBERED ITEMS ARE INTERCHANGEABLE WITH OPPOSITE SIDE

317128 G

KEY#	PART#	DESCRIPTION	QTY
1	*	AXLE, FRONTASSEMBLY, LONG, SUS, 4WS, LF	1
1-1	310170	AXLE, FRONT	1
1-2	52407	SPINDLE, BEARING	4
1-3	9180	ASSEMBLY, SPINDLE, RH, LONG	1
1-4	314088	ASSEMBLY, SPINDLE, LH, LONG	1
1-5	36625	RING, RETEX .57 X .05 TRU 5133-75	2
1-6	53373-860	AXLE COVER	2
8	304590	TIE ROD ASSEMBLY, 19.81 LONG W-SECTION	1
9	180128	SCREW, 3/8-16 X 1.75 HHC	2
10	120382	WASHER, REGSPTLK .393 X .68 X .10	2
11	1499	NUT, 3/8-16 REGHXCTRLK	2
12	58289	SECTOR, STEERING, LF	1
13	52406	BEARING, FLANGE ECC.510 ID X .998 OD X .56	1
14	180177	SCREW, 1/2-13 X 1.50 HHC	1
15	22265	WASHER, FLAT .515 X 1.38 X .119	1
16	1500	NUT, 1/2-13 REGHCTRLK	1
17	311100	KIT 300146 DRAGLINK	1
17-1	58291	STEERING LINK	1
17-2	124925	NUT, 3/8-24 REGHEXJAM	2
17-3	57158	BALL JOINT, 3/8 THD, SHORT STUD	1
17-4	21275	BALL JOINT, 3/8 THD, LONG STUD	1
20	46692	NUT, 3/8-24 WDFLHLK WHIZ	1
22	996416	WASHER, FLAT .391 X 1.00 X .125	2
23	120382	WASHER, REGSPTLK .393 X .68 X .10	1
24	120369	NUT, 3/8-24 REGHEX	1
25	58243	SHAFT, STEERING, LF, 2WS	1
26	58244	PINION, STEERING, LF	1
27	58274	PIN, DOWEL .2500 OD+1.75 LONG	1
28	301410	BEARING, FLANGE .752 ID X 1.061 OD X .24	1
29	301398	WASHER, FORMED, 1.135 X 1.53 X .12	1
30	21682	WASHER, FLAT .765 X 1.25 X .042	1
31	36625	RING, RETEX .57 X .05 TRU 5133-75	1
32	321515	ASSEMBLY, TIRE & RIM, PU 15 X 6.0X 6	2
32-1	24167	VALVE STEM	
32-2	321516	RIM, WHELL	
32-3	314416	BEARING, FLANGE	
32-4	316702	TIRE, 15 X 6 X 6	
37	642	WASHER, FLAT .755 X 1.31 X .075	4
38	36625	RING, RETEX .57 X .05 TRU 5133-75	2
39	304444	HUB CAP, 6" EURO	2
40	306669	CLIP, HUBCAP TINN #C25467-017-4	8
41	49998	WASHER, FLAT .520 X 1.25 X .209	1

* ORDER INDIVIDUAL PARTS - ASSEMBLY NOT AVAILABLE

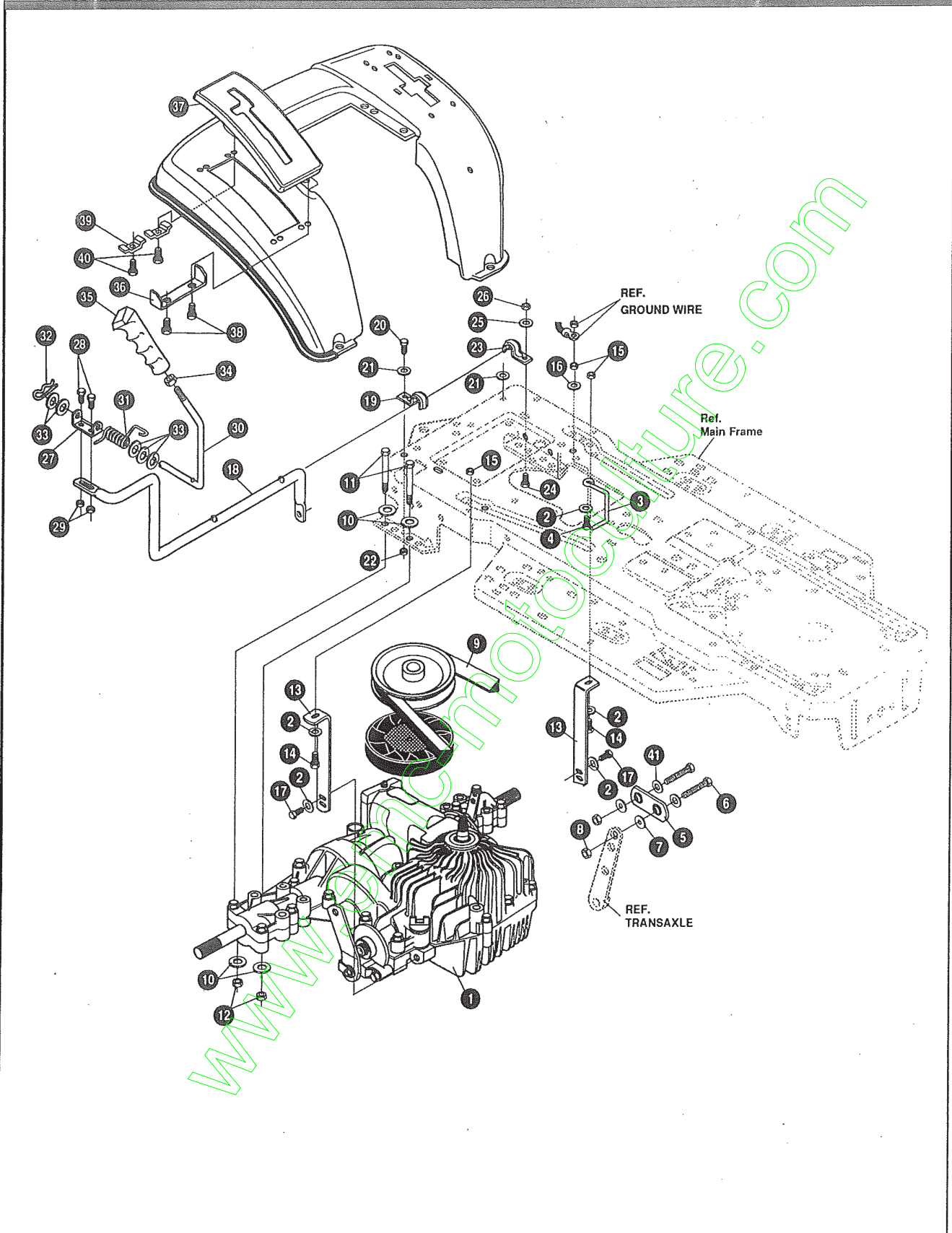


NOTE: ALWAYS USE ORIGINAL EQUIPMENT PARTS.
 Use of service/replacement parts other than original equipment parts may void your warranty.

**ALL UNNUMBERED
 ITEMS ARE INTERCHANGEABLE
 WITH OPPOSITE SIDE**

315597 I

KEY#	PART#	DESCRIPTION	QTY
1	303044-853	ASSEMBLY, WELD, CLUTCH HANDLE	1
2	120238	NUT, 1/2-13 HEXJAM	1
3	304438	KNOB, SHIFT NOMA, 1/2-13, BLACK	1
4	9129	CLIP, RETAINER BRACKET	2
5	44811	SCREW, 1/4-20 X .75 WAHHTAP	2
6	1288	BRACKET, CABLE RETAINER	1
7	48306	PULLEY, METAL	1
8	57322	BOLT, .375 X .375 HSSH, 1/4-20	1
9	1502	NUT, 1/4-20 REGHEXCTRLK	1
10	301491	ASSEMBLY, CLUTCH CABLE	1
11	120613	NUT, 1/4-28 HJAM	1
12	35498	SCREW, 5/16-18 X .75 WAHHTAP	1
13	57444	TIE, CABLE BLACK NYLON, 5.62 LONG	1
14	300158-853	LIFT ASSEMBLY, LH	1
15	300169-853	LIFT ASSEMBLY, RH	1
16	180079	SCREW, 5/16-18 X 1.00 HHC	1
17	58247	NUT, ADJUST	1
18	1498	NUT, 5/16-18 REGHEXCTRLK	1
19	417098	WASHER, FLAT .531 X 1.06 X .063	2
20	8260	PIN, HAIR .091 DIA X 1.66 LONG	2
21	58248-853	BRACKET, REAR HANG, SUSP	2
22	57072	BOLT, 5/16-18 X .63 CARRLN	4
23	1498	NUT, 5/16-18 REGHEXCTRLK	4
24	313926	BRACKET, HEIGHT ADJUST	1
25	180077	SCREW, 5/16-18 X .75 HHC	4
26	1498	NUT, 5/16-18 REGHEXCTRLK	4
31	180077	SCREW, 5/16-18 X .75 HHC	1
32	1498	NUT, 5/16-18 REGHEXCTRLK	1
33	301238	QUADRANT, HEIGHT ADJUST	1
34	180077	SCREW, 5/16-18 X .75 HHC	2
35	1498	NUT, 5/16-18 REGHEXCTRLK	2
36	322292-853	HANDLE, LIFT SHORT(30" S.F.)	1
37	300171	BOLT, .500 X .270 HSSH, 5/16-18	1
38	996418	WASHER, FLAT .506 X .75 X .024	1
39	44108	NUT, 5/16-18 HWDFLCTRLK	1
40	301239	PAWL, SQUARE	1
41	300171	BOLT, .500 X .270 HSSH, 5/16-18	1
42	44108	NUT, 5/16-18 HWDFLCTRLK	1
43	9435	POINTER, HEIGHT ADJUST	1
44	138479	WASHER, EXLK .195 X .41 X .03	1
45	35287	SCREW, #8-32 X .38 HHWATAP	1
46	303027	ROD, ACTUATOR-SHORT	1
47	58326	SPRING, HEIGHT ADJUST	1
48	58325	KNOB, HEIGHT ADJUST PUSH BUTTON	1
49	58329	GRIP, .750 OD W/ HOLE, BLACK	1
50	9149	BRACKET, CABLE RETAINER	1
51	48306	PULLEY, METAL	1
52	58336	BOLT, .375 X .375 HSSH, 1/4-20	1
53	1502	NUT, 1/4-20 REGHEXCTRLK	1
54	314177	CABLE, LIFT 22.92, F-5, 20 X 8-8	1
55	300310	PIN, CLEVIS .310 DIA+.475 LONG	1
56	300311	RING, RET E .31 X .25 TRU 5133-31	1
57	120375	NUT, 1/4-20 REGHEX	1
58	48306	PULLEY, METAL	1
59	300317	PIN, CLEVIS .375 DIA X .81 LONG	1
60	8260	PIN, HAIR .091 DIA X 1.66 LONG	1
61	9405	CLEVIS, LIFT CABLE	1
62	120372	NUT, 1/4-20 REGSQ	1
63	39522	PIN, CLEVIS .312 X .812	1
64	121222	PIN, COTTER .090 DIA X .75 LONG	1
65	333903	LIFT COVER, F5, LF, SF, BLACK	1
66	300340	SCREW, #10 X .75 HHPLAST, BLACK	3
67	120392	WASHER, FLAT .281 X .63 X .065	1



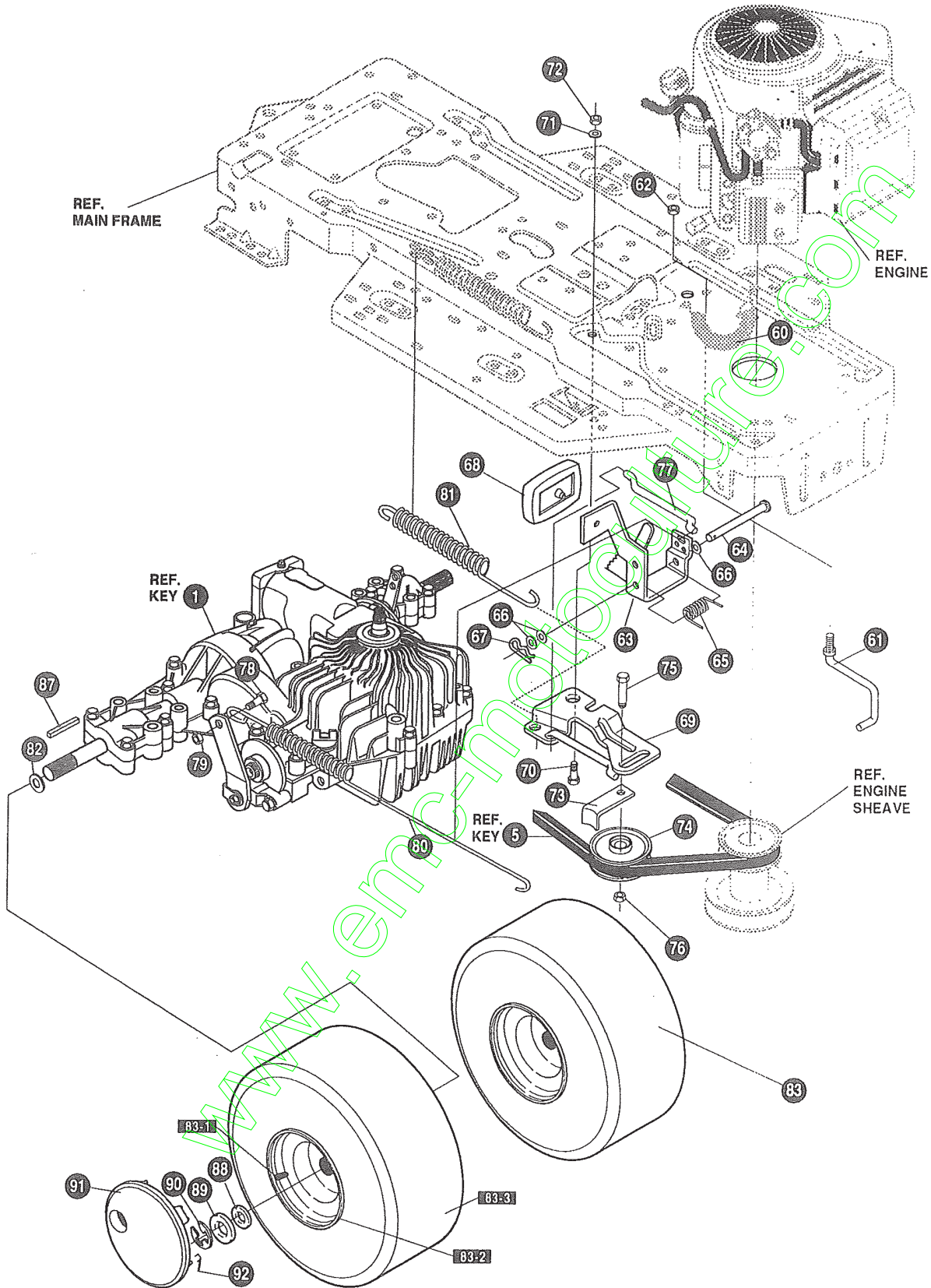
NOTE: ALWAYS USE ORIGINAL EQUIPMENT PARTS.
Use of service/replacement parts other than original equipment parts may void your warranty.

ALL UNNUMBERED ITEMS ARE INTERCHANGEABLE WITH OPPOSITE SIDE

335521 A

KEY#	PART#	DESCRIPTION	QTY
1	*	TRANSAXLE, PEERLESS, VST, 205, 2WS	1
2	120393	WASHER, FLAT .344 X .69 X .065	6
3	326633	BELT GUIDE	1
4	180079	SCREW, 5/16-18 X 1.00 HHC	1
5	326678	LINK, TIE ROD, SHIFT, PEERLESS	1
6	122145	SCREW, 3/8-16 X 1.25 HHC	2
7	274517	WASHER, FLAT .406 X .73 X .063	2
8	1499	NUT, 3/8-16 REGHXCTRLK	2
9	332547	BELT, V 4L, 78.75, HYDRO, LF	1
10	120393	WASHER, FLAT .344 X .69 X .065	2
11	180089	SCREW, 5/16-18 X 2.25 HHC	4
12	1498	NUT, 5/16-18 REGHEXCTRLK	4
13	326684	BRACKET, STABILIZER	2
14	180077	SCREW, 5/16-18 X .75 HHC	1
15	1498	NUT, 5/16-18 REGHEXCTRLK	3
16	138538	WASHER, REGINTLK .320 X .61 X .03	1
17	35498	SCREW, 5/16-18 X .75 WAHHTAP	2
18	325392	LEVER, SHIFT-LOWER, LF, BLACK	1
19	310347-853	CLIP- SHIFT LEVER, .625 ROD	1
20	180077	SCREW, 5/16-18 X .75 HHC	1
21	996416	WASHER, FLAT .391 X 1.00 X .125	1
22	1498	NUT, 5/16-18 REGHEXCTRLK	1
23	310347-853	CLIP- SHIFT LEVER, .625 ROD	1
24	180077	SCREW, 5/16-18 X .75 HHC	1
25	996416	WASHER, FLAT .391 X 1.00 X .125	1
26	1498	NUT, 5/16-18 REGHEXCTRLK	1
27	310356	BRACKET, PIVOT, SHIFT LEVER	1
28	180020	SCREW, 1/4-20 X .75 HHC	2
29	1502	NUT, 1/4-20 REGHEXCTRLK	2
30	318452	LEVER, SHIFT, UPPER, SOF, 1/2-13	1
31	318451	SPRING, TORSION, .56 X .95 X .095	1
32	8260	PIN, HAIR .091 DIA X 1.66 LONG	1
33	2968	WASHER, FLAT .504 X .75 X .059	5
34	120238	NUT, 1/2-13 HEXJAM	1
35	306690	HANDLE, 1/2-13 MOLDED, BLACK	1
36	311257-853	BRACKET COVER, F-5, FENDER SHIFT	1
37	314244	COVER, PLASTIC, LF, HYDRO, F-5	1
38	311331	SCREW, 1/4-15 X .44/.53 HILOHWA	2
39	1341	CLAMP, SPRING 1.17" ID	2
40	311331	SCREW, 1/4-15 X .44/.53 HILOHWA	2
41	120394	WASHER, FLAT .406 X .81 X .065	2

* CONTACT YOUR NEAREST TRANSAXLE DEALER FOR PARTS & SERVICE



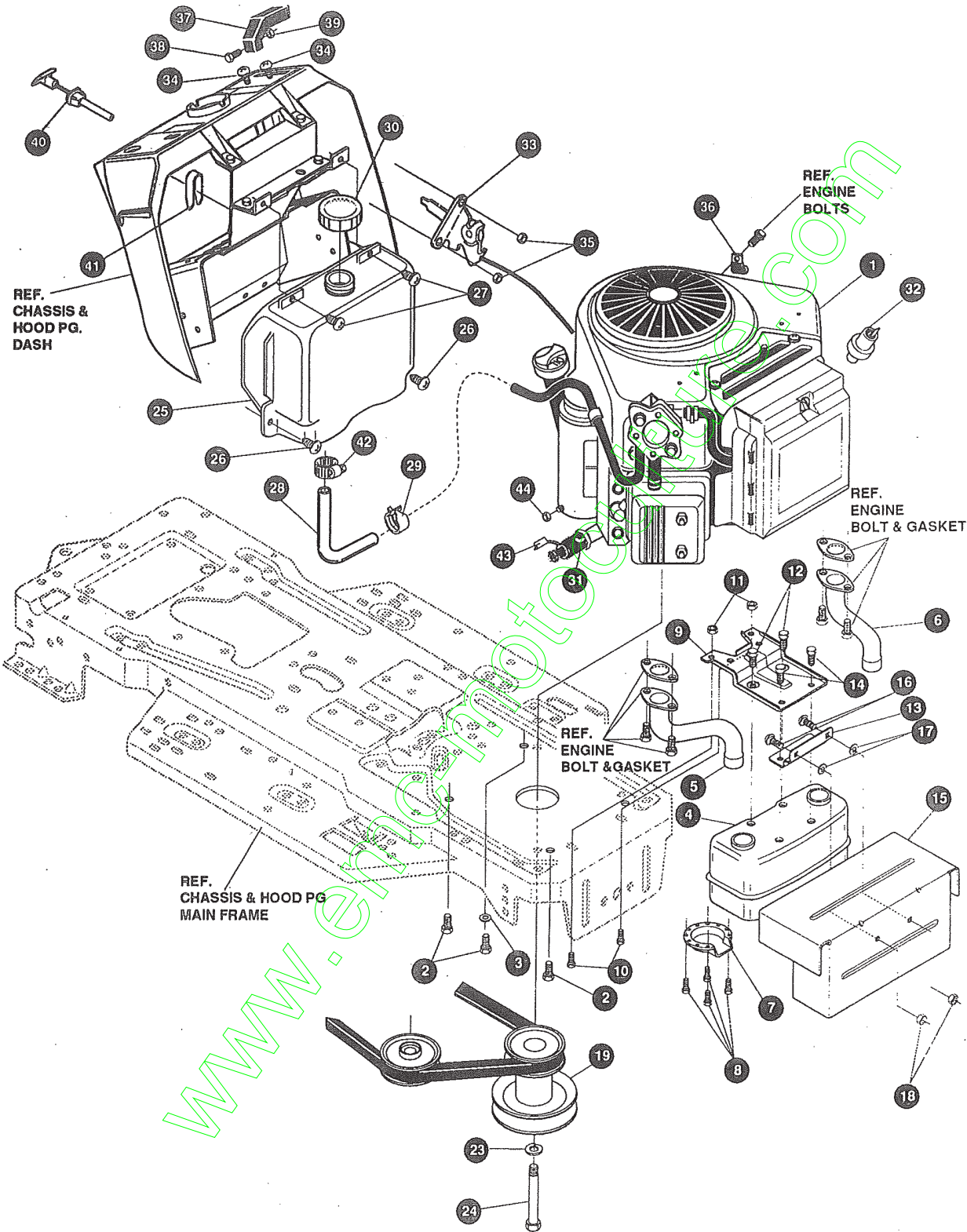
NOTE: ALWAYS USE ORIGINAL EQUIPMENT PARTS.
 Use of service/replacement parts other than original equipment parts may void your warranty.

ALL UNNUMBERED ITEMS ARE INTERCHANGEABLE WITH OPPOSITE SIDE

335521 A

KEY#	PART#	DESCRIPTION	QTY
60	321514	SPRING, DRAG LINK BIAS	1
61	304016	GUIDE, BELT, RH	1
62	1498	NUT, 5/16-18 REGHEXCTRLK	1
63	325942	PEDAL ASSEMBLY, BRAKE/CLUTCH, LF	1
64	319675	PIN, CLEVIS .500 D X 4.53 LONG	1
65	57847	SPRING, BRAKE PEDAL	1
66	2968	WASHER, FLAT .504 X .75 X .059	3
67	56180	PIN, HAIR .091 DIA X 1.62 LONG	1
68	48160	PAD, CLUTCH BRAKE W/PRINTING	1
69	320381-853	ARM, IDLER TRACTION, SOG, LF	1
70	329989	BOLT, .625 X .135 HSSH, 5/16-18	1
71	45602	WASHER, FLAT .333 X .87 X .119	1
72	1498	NUT, 5/16-18 REGHEXCTRLK	1
73	39659	RETAINER, BELT	1
74	35374	PULLEY, IDLER V4L, 3.06 X .62	1
75	45892	BOLT, 3/8-16 X 1.50 CARRSN	1
76	1499	NUT, 3/8-16 REGHXCTRLK	1
77	57204	ROD, CLUTCH 3.92"	1
78	326131	BOLT, .495 X .31 HSSH, 5/16-18	1
79	1498	NUT, 5/16-18 REGHEXCTRLK	1
80	327947	SPRING, BRAKE .29-.25, LF, PEERHYD	1
81	330505	SPRING, CLUTCH, .113 X .750 X 8.75	1
82	42815	WASHER, FLAT .755 X 1.53 X .07	2
83	301318	ASSEMBLY, TIRE & RIM, 20 X 10.00-8	2
83-1	24167	VALVE STEM	
83-2	41105	RIM, WHEEL	
83-3	319686	TIRE, 20 X 10 X8	
87	52928	KEY, SQUARE .187 SQUARE X 2.25 LONG	2
88	642	WASHER, FLAT .755 X 1.31 X .075	4
89	42815	WASHER, FLAT .755 X 1.53 X .07	2
90	36625	RING, RETEX .57 X .05 TRU 5133-75	2
91	306570	HUB CAP, 8" EURO	2
92	306669	CLIP, HUBCAP TINN #C25467-017-4	10

* ORDER INDIVIDUAL PARTS - ASSEMBLY NOT AVAILABLE



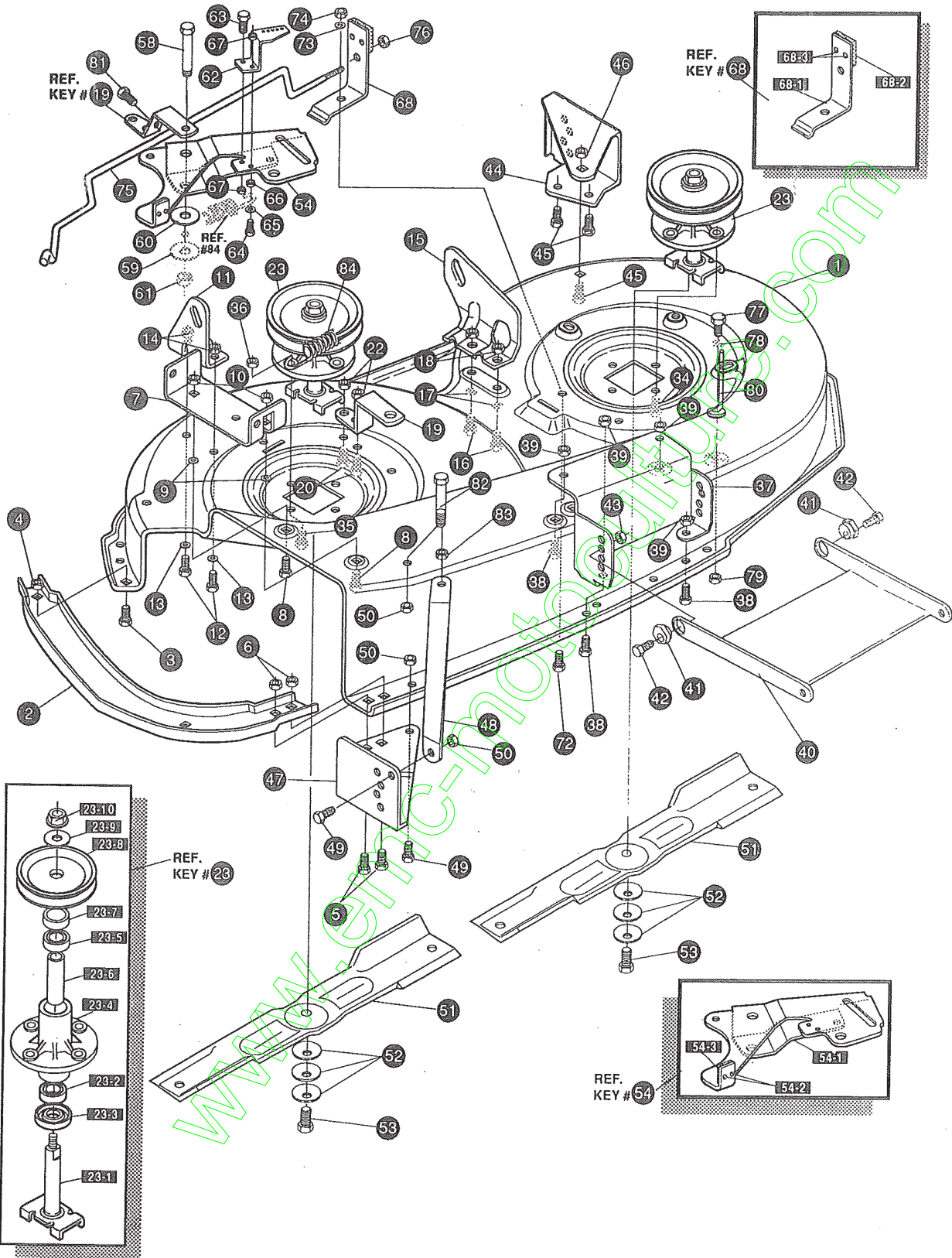
NOTE: ALWAYS USE ORIGINAL EQUIPMENT PARTS.
Use of service/replacement parts other than original equipment parts may void your warranty.

ALL UNNUMBERED ITEMS ARE INTERCHANGEABLE WITH OPPOSITE SIDE

327748 E

KEY#	PART#	DESCRIPTION	QTY
1	*	ENGINE, 14-16HP, VANGUARD	1
2	50947	SCREW, 3/8-16 X 1.25 WAHHTAP	4
3	138489	WASHER, EXLK .384 X .69 X .04	1
4	305553	MUFFLER, 14/18, TWIN NELSON, 22785 N	1
5	305554	EXHAUST TUBE, 15HP, RH, B&S, VANG	1
6	305555	EXHAUST TUBE, 15HP, LH, B&S, VANG	1
7	56472	DEFLECTOR SIDE OUT (BS222573)	1
8	35287	SCREW, #8-32 X .38 HHWATAP	4
9	304709-853	BRACKET, MUFFLER	1
10	56030	SCREW, 5/16-18 X .75 WDFLLK	2
11	55273	NUT, 5/16-18 WDFLLKLRG WHIZ	2
12	995346	SCREW, 1/4-20 X .50 WAHHTAP	2
13	9796	BRACKET, TRANSAXLE	1
14	44811	SCREW, 1/4-20 X .75 WAHHTAP	2
15	320922-853	SHIELD, MUFFLER, HEAT TWIN	1
16	57072	BOLT, 5/16-18 X .63 CARPLN	2
17	309436	PUSHNUT, 5/16 BOLT RETAINER	2
18	55273	NUT, 5/16-18 WDFLLKLRG, WHIZ	2
19	326565	PULLEY, ENGINE 4.0 OD X 4.4 LONG X 5.0 OD	1
23	120383	WASHER, REGSPTLK .459 X .78 X .12	1
24	428644	SCREW, 7/16-20 X 5.00 HHC	1
25	314991	TANK, FUEL 2-GALLON, GPWR, CLEAR	1
26	300303	SCREW, .25 X .75 X .51 HHWAPLASTITE	2
27	995346	SCREW, 1/4-20 X .50 WAHHTAP	2
28	48049	TUBING, .25 X .50 X BULK GAS LINE	10.0'
29	47345	CLAMP, HOSE SCREW TYPE	1
30	300304	CAP, GAS - 2.0 THROAT	1
31	325547	OIL DRAIN VALVE ASSEMBLY	1
32	314797	OIL SENSOR, B&S, TWIN CYLINDER	1
33	309092	THROTTLE, CONTROL, 34.00 LONG CAPRO	1
34	320553	SCREW, 10-24 X .63 PHPNMA CRSS	2
35	308459	NUT, #10-24 HXHDNYLK	2
36	57569	RETAINER, .31 ID X .62 X .03 WIRE	1
37	300508	KNOB, THROTTLE CONTROL GP STYLE	1
38	159585	SCREW, #8-32 X .38 PHPNMA	1
39	120622	NUT, #8-32 REGHX	1
40	307113	CHOKE CONTROL, 42.0 LONG	1
41	314522	CLIP, CHOKE CONTROL	1
42	47345	CLAMP, HOSE SCREW TYPE	1
43	327422	CAP, OIL DRAIN VALVE ASSEMBLY, YELLOW	1
44	124818	NUT, 1/4-20 REGHXJAM	1

* SEE ENGINE MANUAL



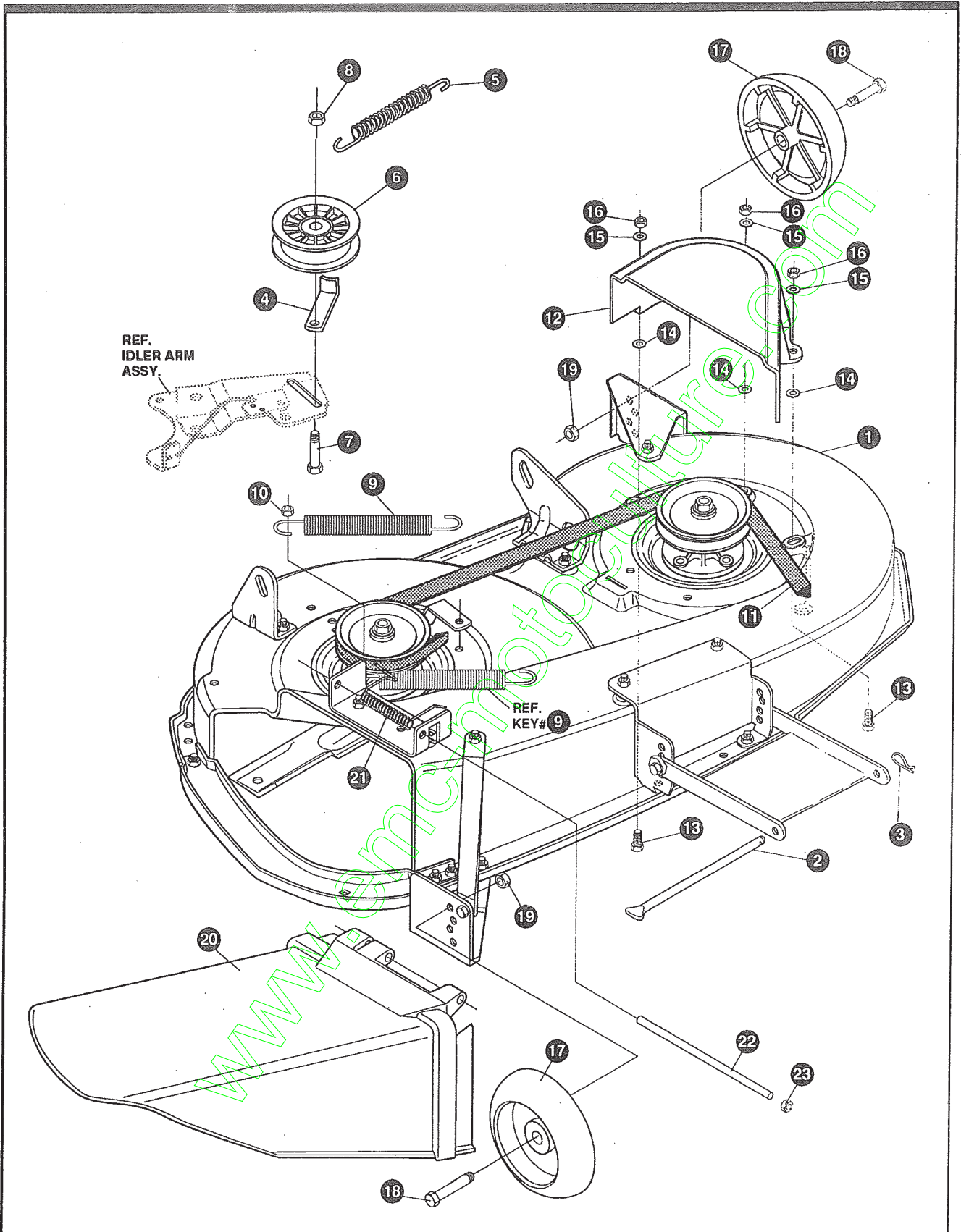
NOTE: ALWAYS USE ORIGINAL EQUIPMENT PARTS.
 Use of service/replacement parts other than original equipment parts may void your warranty.

**ALL UNNUMBERED
 ITEMS ARE INTERCHANGEABLE
 WITH OPPOSITE SIDE**

F3560-220

PRE-PAINTED DECK ASSEMBLY

KEY#	PART#	DESCRIPTION	QTY
1	325116	43" DECK KIT	1
2	326480-853	TOE GUARD - MULCHER	1
3	180077	SCREW, 5/16-18 X .75 HHC	1
4	1498	NUT, 5/16-18 REGHEXCTRLK	1
5	180077	SCREW, 5/16-18 X .75 HHC	2
6	1498	NUT, 5/16-18 REGHEXCTRLK	2
7	317017	BRACKET, CHUTE MOUNT, BLACK	1
8	180077	SCREW, 5/16-18 X .75 HHC	2
9	120393	WASHER, FLAT .344 X .69 X .065	2
10	1498	NUT, 5/16-18 REGHEXCTRLK	2
11	313929	LIFT BRACKET, REAR, RH, BLACK 853	1
12	180077	SCREW, 5/16-18 X .75 HHC	2
13	120393	WASHER, FLAT .344 X .69 X .065	2
14	1498	NUT, 5/16-18 REGHEXCTRLK	2
15	310667	BRACKET, DECK, LIFT, REAR, LH, BLACK	1
16	180077	SCREW, 5/16-18 X .75 HHC	2
17	120393	WASHER, FLAT .344 X .69 X .065	2
18	1498	NUT, 5/16-18 REGHEXCTRLK	2
19	326893-853	BRACE, IDLER SUPPORT, 40", 43"	1
20	180077	SCREW, 5/16-18 X .75 HHC	2
22	44108	NUT, 5/16-18 HWDFLCTRLK	2
23	56424-853	QUILL ASSEMBLY, 36/39/40/43	2
23-1	56425	SHAFT/SADDLE 36"	1
23-2	49562	BEARING, BALL 6203-2AA-C3 ARMORED	1
23-3	50616	DUST SHIELD	1
23-4	55547	QUILL CASTING (1046)	1
23-5	49562	BEARING, BALL 6203-2AA-C3 ARMORED	1
23-6	50818	SPACER, SLEEVE .669 X .88 X 3.797	1
23-7	51449	SPACER, SLEEVE .672 X .93 X .438	1
23-8	313898	PULLEY ASSEMBLY	1
23-9	56365	WASHER, SPECIAL QUILL	1
23-10	1282	NUT, 7/16-20 WDFLLK	1
34	35498	SCREW, 5/16-18 X .75 WAHHTAP	7
35	300345	SCREW, 5/16-18 X 1.38 WAHHTAP	1
36	1498	NUT, 5/16-18 REGHEXCTRLK	1
37	317040	BRACKET FRONT, BLACK	1
38	180077	SCREW, 5/16-18 X .75 HHC	4
39	1498	NUT, 5/16-18 REGHEXCTRLK	4
40	58305-853	BRACKET LINK DECK, FRONT	1
41	58247	NUT, ADJUST	2
42	180079	SCREW, 5/16-18 X 1.00 HHC	2
43	1498	NUT, 5/16-18 REGHEXCTRLK	2
44	317041	BRACKET, GAGE WHEEL, LH, BLACK	1
45	180077	SCREW, 5/16-18 X .75 HHC	3
46	1498	NUT, 5/16-18 REGHEXCTRLK	3
47	322464-853	BRACKET, GAGE WHEEL, RH, FRONT	1
48	314282-853	BRACKET, STABILIZER	1
49	180077	SCREW, 5/16-18 X .75 HHC	2
50	1498	NUT, 5/16-18 REGHEXCTRLK	3
51	326961	BLADE, 43", BLACK	2
52	2483	WASHER, .39 ID X 1.25 D X .07 BELLVIL	6
53	39573	SCREW, 3/8-24 X 1.00 NYLHHC	2
54	320576-853	IDLER ARM ASSEMBLY	1
54-1	322116-853	ARM, IDLER 40/43", DECK	1
54-2	41601	RIVET, OVSET .187 DIA X .50 LONG	2
54-3	306973	BRAKE PAD - HARD-NF343 (X-31)	1
58	304420	BOLT, .500 X 2.15 HSH	1
59	996416	WASHER, FLAT .391 X 1.00 X .125	1
60	996307	WASHER, FLAT .391 X 1.00 X .209	1
61	45171	NUT, 3/8-16 HWDFL, WHIZ-LOCK	1
62	326249-853	BRACKET, EXTENSION IDLER	1
63	180077	SCREW, 5/16-18 X .75 HHC	1
64	180083	SCREW, 5/16-18 X 1.50 HHC	1
65	446363	WASHER, FLAT .375 X .88 X .082	1
66	271184	NUT, 5/16-18 HEXKEPS	1
67	1498	NUT, 5/16-18 REGHEXCTRLK	2
68	321828	BLADE BRAKE ASSEMBLY	1
68-1	135624	RIVET, TRSET .185 DIA X .41 LONG	2
68-2	304119-853	BRAKE ARM	1
68-3	306973	BRAKE PAD - HARD-NF343 (X-31)	1
72	180077	SCREW, 5/16-18 X .75 HHC	1
73	120393	WASHER, FLAT .344 X .69 X .065	1
74	1498	NUT, 5/16-18 REGHEXCTRLK	1
75	314079	ROD, BRAKE	1
76	1502	NUT, 1/4-20 REGHEXCTRLK	1
77	180079	SCREW, 5/16-18 X 1.00 HHC	1
78	120393	WASHER, FLAT .344 X .69 X .065	1
79	1498	NUT, 5/16-18 REGHEXCTRLK	1
80	325965	BELT GUIDE, 43" DECK, UPSTOP	1
81	308231	SCREW, 1/4-20 X 1.25 HHWATAP	1
82	311104	SCREW, 5/16-18 X 5.00 HHC	1
83	271184	NUT, 5/16-18 HEXKEPS	1
84	35410	SPRING, .071 X .62 X 4.37	1



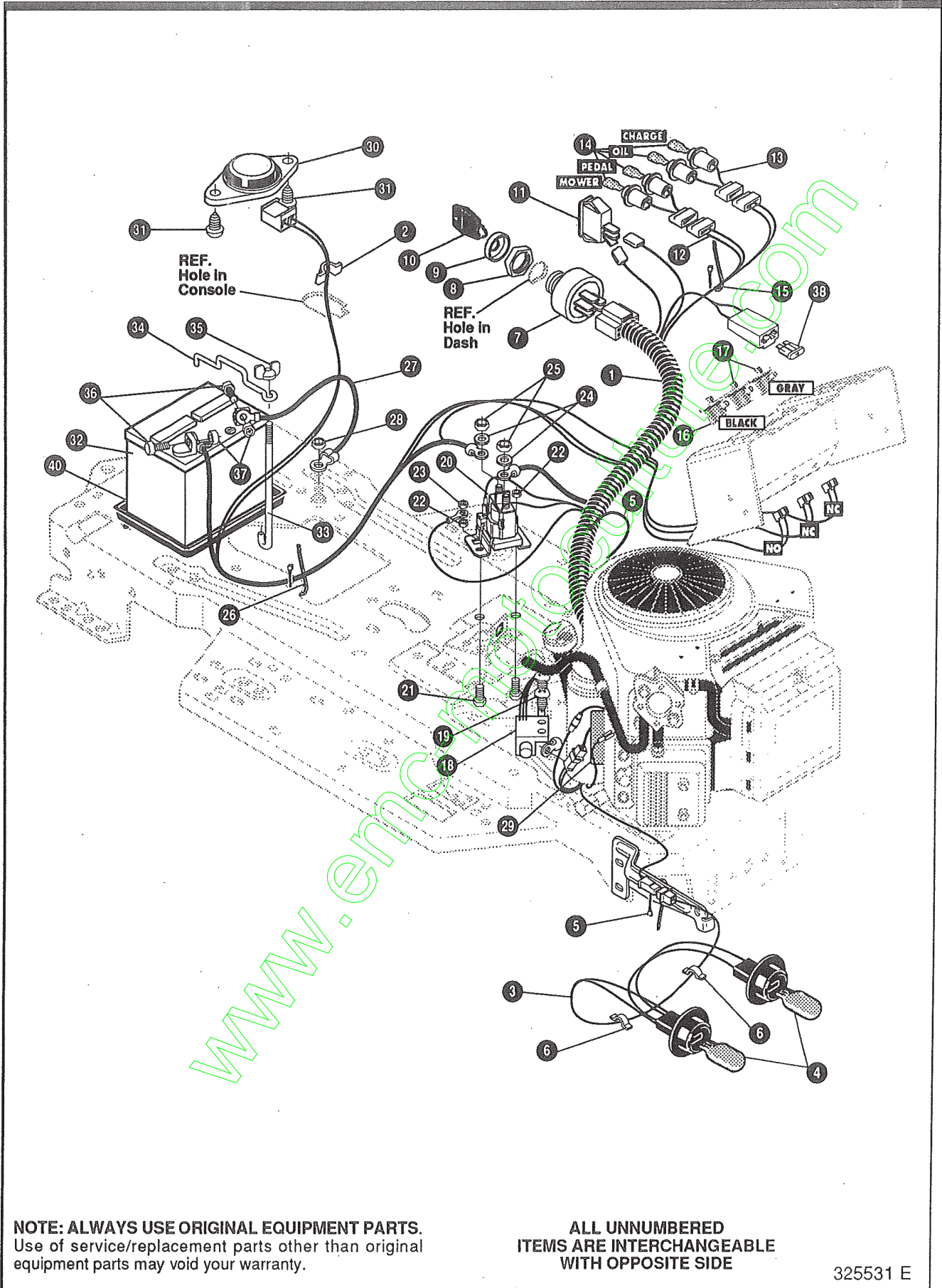
NOTE: ALWAYS USE ORIGINAL EQUIPMENT PARTS.
 Use of service/replacement parts other than original
 equipment parts may void your warranty.

**ALL UNNUMBERED
 ITEMS ARE INTERCHANGEABLE
 WITH OPPOSITE SIDE**

326401 C

KEY#	PART#	DESCRIPTION	QTY
1	329036	DECK, 43" MOWER 2-WHEEL, EXPORT.....	1
2	58306	ROD, DECK HITCH.....	1
3	8260	PIN, HAIR .091 DIA X 1.66 LONG.....	1
4	1346	RETAINER, BELT.....	1
5	314107	SPRING, TENSION 5.00 LONG 17 LB/IN.....	1
6	310326	PULLEY, IDLER BFF, 4.00 WIDE FL.....	1
7	126416	BOLT, 3/8-16 X 1.75 CARRLN.....	1
8	45171	NUT, 3/8-16 HWDFL WHIZ-LOCK.....	1
9	35410	SPRING, .071 X .62 X 4.37.....	1
10	1498	NUT, 5/16-18 REGHEXCTRLK.....	1
11	314108	BELT, V 5L, 86.00, KEVLAR.....	1
12	333073	GUARD, BELT, LH, PLASTIC.....	1
13	57101	BOLT, 5/16-18 X .75 CARRSN.....	3
14	309436	PUSHNUT, 5/16 BOLT RETAINER.....	3
15	120393	WASHER, FLAT .344 X .69 X .065.....	3
16	1498	NUT, 5/16-18 REGHEXCTRLK.....	3
17	302611	GAUGE WHEEL, EURO 6.00 OD X 1.38 WD.....	2
18	23763	BOLT, .500 X 1.390, HSSH 3/8-16.....	2
19	1499	NUT, 3/8-16 REGHXCTRLK.....	2
20	304422	CHUTE DEFLECTOR, 40", 42" & 43".....	1
21	314975	SPRING, TORSION, CHUTE DEFLECTOR.....	1
22	304424	ROD, PIVOT DECK, .312 D X 7.25.....	1
23	3535	NUT, PUSH ON CAP .312 OD.....	1

www.emc.com



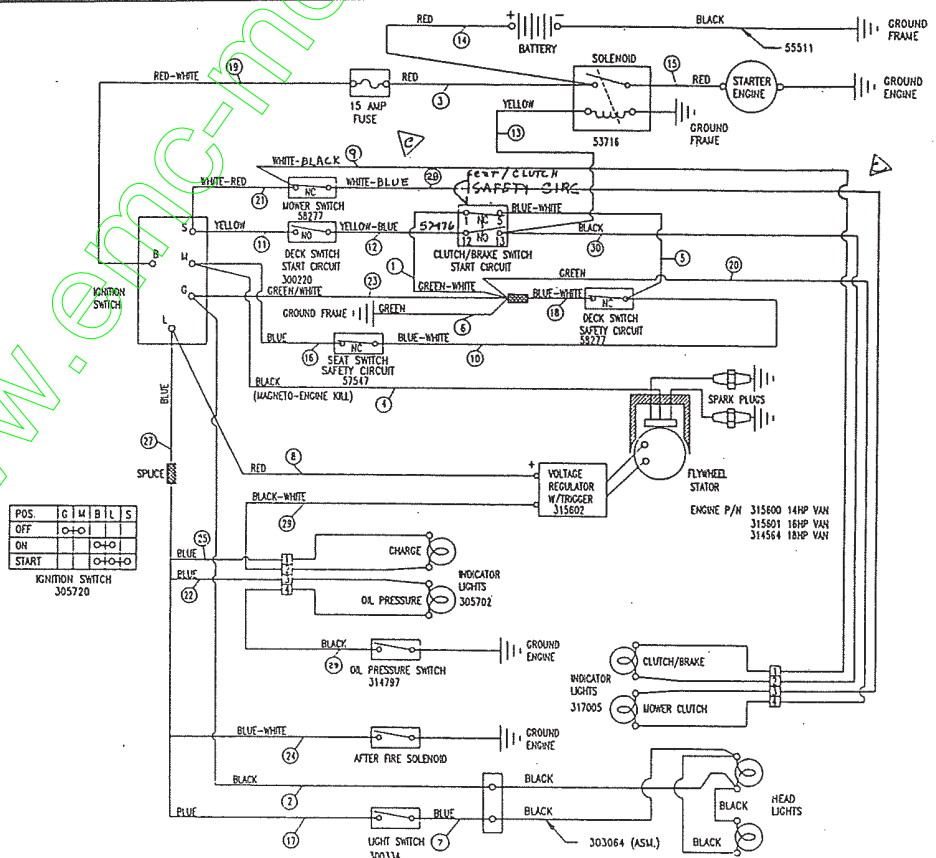
NOTE: ALWAYS USE ORIGINAL EQUIPMENT PARTS.
Use of service/replacement parts other than original equipment parts may void your warranty.

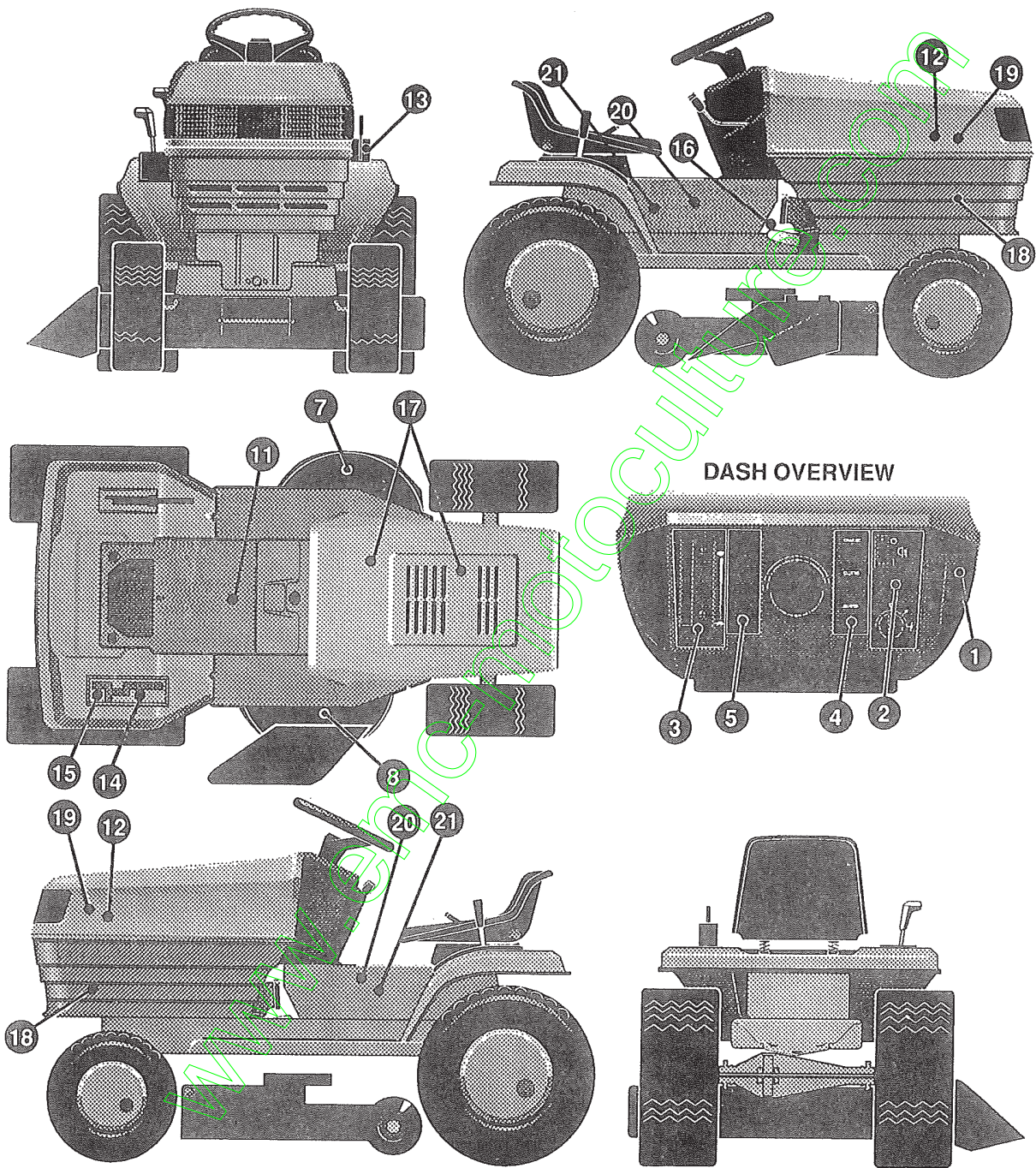
**ALL UNNUMBERED
ITEMS ARE INTERCHANGEABLE
WITH OPPOSITE SIDE**

325531 E

KEY#	PART#	DESCRIPTION	QTY
1	314899	WIRE HARNESS, 14-18HP, B&S, VANG, GPWR	1
2	41482	PRESS CLIP, 1.380 LONG .255 ID	1
3	303064	ASSEMBLY, LIGHT WIRE-1/4 TURN	1
4	52572	BULB, HEADLAMP	2
5	57444	TIE, CABLE BLACK NYLON, 5.62 LONG	2
6	41482	PRESS CLIP, 1.380 LONG .255 ID	2
7	327355	SWITCH-IGNITION (AFTER FIRE) 3 POSITION	1
8	327352	NUT, 5/8-8 ACME DELTA FOR BOOT	1
9	300194	BOOT, IGNITION SWITCH	1
10	327350	KEY, IGNITION	2
11	300334	LIGHT SWITCH, ON/OFF, PANEL MOUNT	1
12	317005	LIGHT HARNESS, 2 I.L. MOWER/CLUTCH	1
13	305702	HARNESS, LIGHT 2 I.L.	4
14	57769	BULB, INDICATOR	4
15	57444	TIE, CABLE BLACK NYLON, 5.62 LONG	1
16	326653	SWITCH, SNAP MOUNT, NO .055/116 GREY	1
17	326654	SWITCH, SNAP MOUNT, NC .140 BLUE	2
18	57476	SWITCH, SCREW MOUNT, DP, NC, NO BLACK	1
19	57220	SCREW, #12 X .50 PHPNHTAP, BLACK	2
20	53716	SOLENOID	1
21	187745	SCREW, 1/4-20 X .75 HXSEMMA	2
22	1502	NUT, 1/4-20 REGHEXCTRLK	2
23	271172	NUT, 1/4-20 REGHEXKEPS	1
24	138485	WASHER, EXLK .320 X .61 X .03	2
25	120368	NUT, 5/16-24 REGHEX	2
26	57444	TIE, CABLE BLACK NYLON, 5.62 LONG	1
27	55511	WIRE, GROUND, 12.5"	1
28	271184	NUT, 5/16-18 HEXKEPS	1
29	315602	REGULATOR, SEN VOLT, BS W/SENSOR	1
30	57547	SWITCH, SEAT	1
31	160505	SCREW, 1/4-20 X .38 PHPNHMA	2
32	92693	BATTERY, 12V (MAINTENANCE FREE)	1
33	57551	ROD, BATTERY	1
34	57552	ROD, BATTERY, TOP	1
35	325232	NUT, WING 1/4-20 NYLON	1
36	180020	SCREW, 1/4-20 X .75 HHC	2
37	271172	NUT, 1/4-20 REGHEXKEPS	2
40	91895	TRAY - BATTERY	1

SCHEMATIC DRAWING



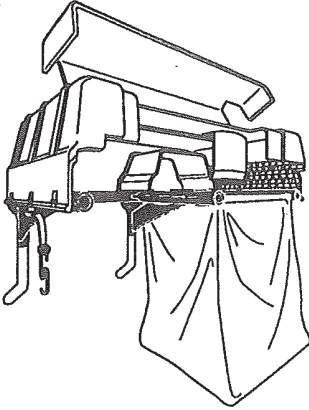


KEY#	PART#	DESCRIPTION	QTY
1	68900	DECAL, BLADE ENGAGE EUROPE	1
2	305766	DECAL, DASH, RH, IGNITION	1
3	305767	DECAL, DASH, LH	1
4	314900	DECAL, DASH, RH, TRANSLUCENT	1
5	314901	DECAL, DASH, LH, TRANSLUCENT	1
7	402700	DECAL, CAUTION, DECK, LH	1
8	402701	DECAL, CAUTION, DECK, RH, CUT HAND	1
11	402689	DECAL, CONSOLE, SYMBOLIC, CAUTION	1
12	307065	NAMEPLATE, TURBOGREEN, CHROM	2
13	402214	DECAL, HEIGHT ADJUST	1
14	314923	DECAL, SHIFTER, LF, HYDRO, FORWARD	1
15	314925	DECAL, SHIFTER, LF, HYDRO, REVERSE	1
16	402702	DECAL, BRAKE/CLUTCH	1
17	305602	FOAM HOOD 4 X 15	2
18	305603	PAD, 18 X 6 FOAM HOOD	2
19	305604	FOAM HOOD 7 X 12	2
20	402146	NAMEPLATE, 18/43, CHROME	2
21	316925	DECAL, HYDROSTATIC DRIVE	2

www.emc-nature.com

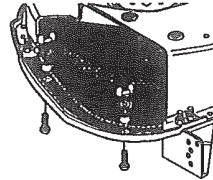
Contact the dealer where your tractor was purchased for the available accessories. If you are unable to contact the dealer, write to the address on the warranty page of your Operator's manual.

LARGE LAWN TRACTOR

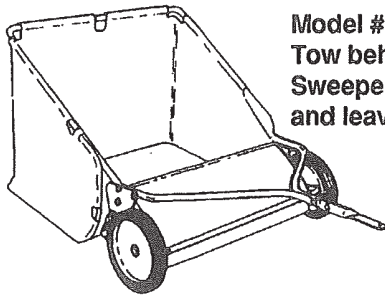
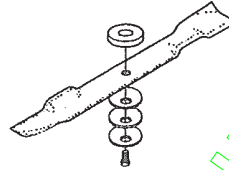


Model # 5708-34
Grass Collector for
40, 42, 43" decks

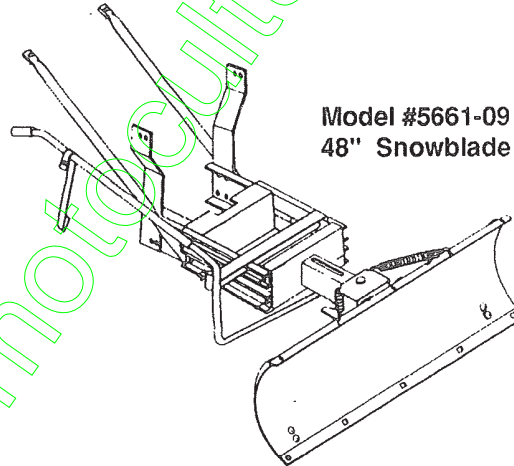
For heavy duty grass
 collection order Model
 #5709-10 Air Assist



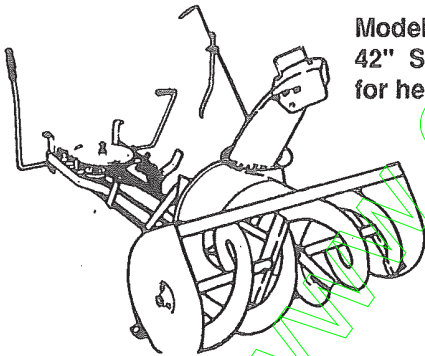
5717-00
Mulching Kit (42/43" Deck)
5716-00
Mulching Kit (40" Deck)



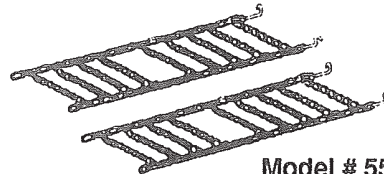
Model # 5648-16
Tow behind Lawn
Sweeper for grass
and leaves



Model #5661-09
48" Snowblade



Model #5705-06
42" Snowthrower
for heavy snowfall



Model # 5585-00
Tire Chains - 20" x 8.0" tires
Model # 5706-00
Tire Chains - 20" x 10.0" tires

OTHER ACCESSORIES

Model	Description
5672-01	Wheel Weights - Front - 1 pr. w/mtg. hdw. - Fits 15" tires
5673-02	Wheel Weights - Rear - 1 pr. w/mtg. hdw. - Fits 18" & 20" tires
309070	40" High Lift Blade for Bagging or Side Discharge (Requires 2)
330277	40" Mulching Blade (Requires 2)
316608	43" High Lift Blade for Bagging or Side Discharge (Requires 2)
325762	43" Mulching Blade (Requires 2)

www.emc-motoculture.com

www.emc-motoculture.com

www.emc-motoculture.com

www.emc-motoculture.com