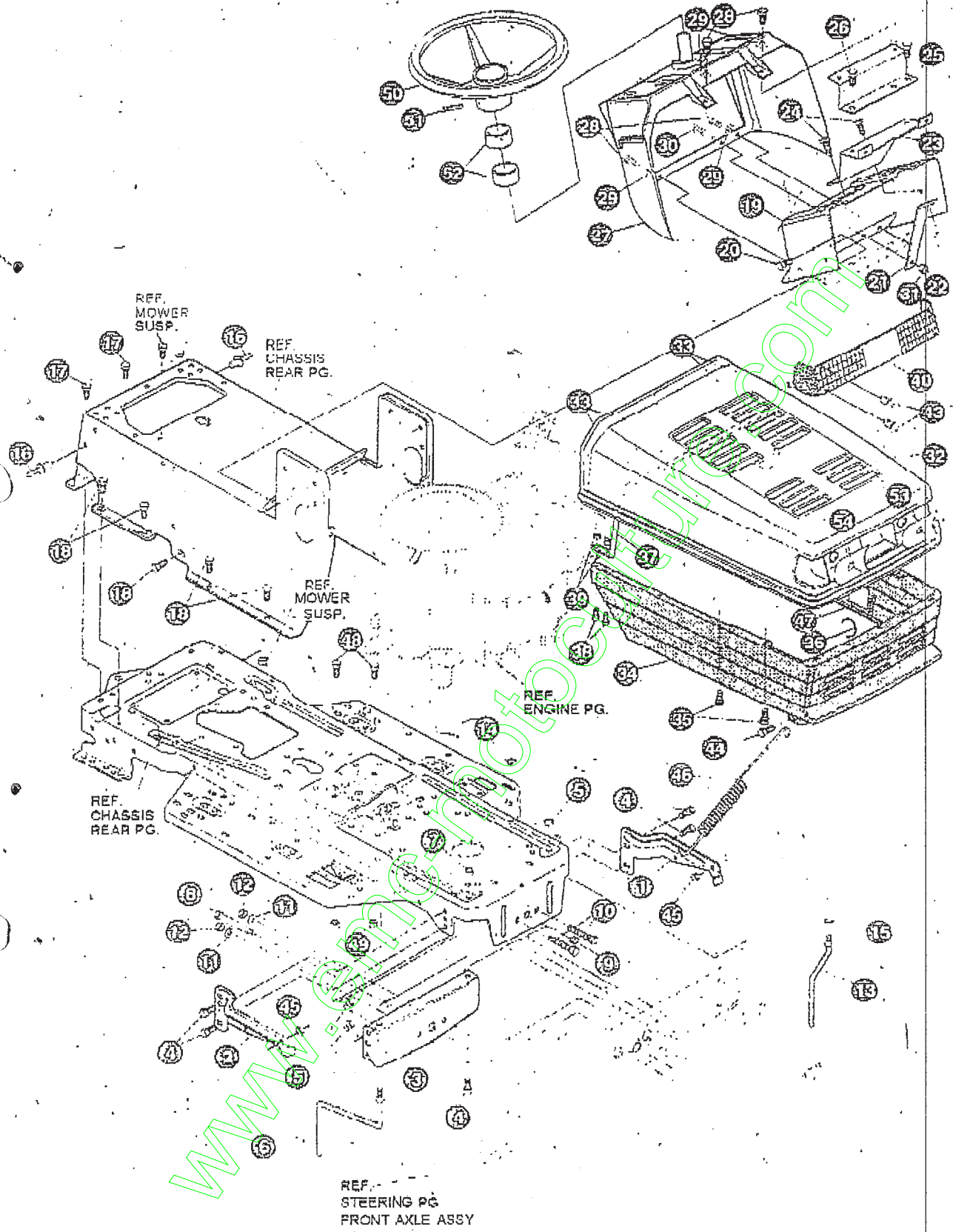


ENSEMBLE CHASSIS & CAPOT (AVANT)



UTILISEZ DES PIÈCES D'ORIGINE POUR
CONSERVER L'APPLICATION DE LA GARANTIE

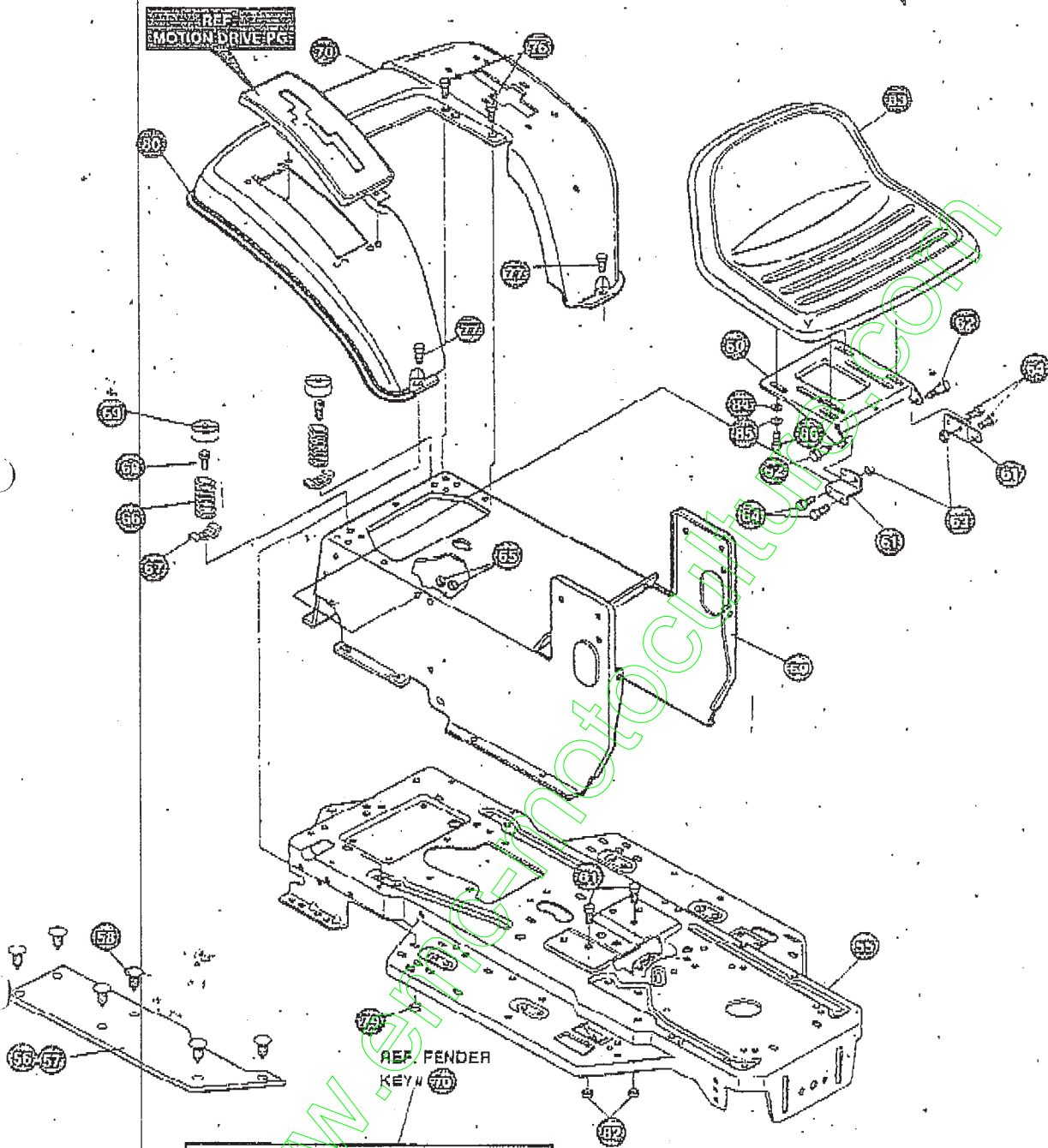
TOUTES LES PIÈCES NON
REFEREES SONT
INTERCHANGABLES AVEC
LEURS OPPOSEES.

325876 E

TRACTEUR TONDEUSE 40" MODÈLE F3560-260

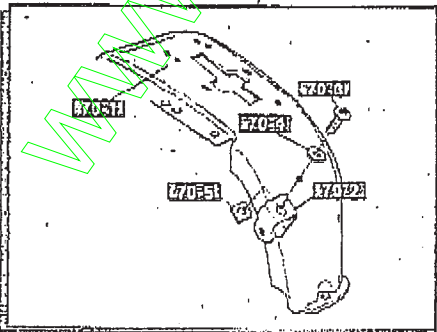
KEY#	PART#	DESCRIPTION	QTY
	326569-853	BRACKET, GRILLE, LH	1
2	326568-853	BRACKET, GRILLE, RH	1
3	313541-853	BRACKET, FRONT AXLE	1
4	56030	SCREW, 5/16-18 X .75 WDFLLK	5
5	55273	NUT, 5/16-18 WDFLLKLRG, WHIZ	5
6		GUIDE, BELT, RIDER	
7	30040 1499	NUT, 5/16-18 REGHXCTRLK	
8	308207	BOLT, .625 X 2.18 HSSH. 1/2-13	
9	309008	NUT, 1/2-13 HEXJAM CTRLK	
10	180138	SCREW, 3/8-16 X 3.00 HHC	2
11	2483	WASHER, .39 ID X 1.25 D X .07 BELLVIL	2
12	1499	NUT, 3/8-16 REGHXCTRLK	2
13	300635	GUIDE, BELT, SHORT, 15" WHEEL	
14	124824	NUT, 5/16-18 HEXJAM	
15	271180	NUT, 3/8-16 HEXKEPS	
16	46763	RIVET, POP .187 DIA X .450 LONG	3
17	35497	SCREW, 5/16-18 X .50 WAHTAP	2
18	995346	SCREW, 1/4-20 X .50 WAHTAP	10
19	58312-853	SUPPORT, DASH, STEEL	1
20	300303	SCREW, 25 X 75 X .51 HHWAPLASTITE	2
21	300201-853	BRACE, DASH, SUPPORT, LOWER	
22	1502	NUT, 1/4-20 REGHEXCTRLK	
23	302530-853	BRACKET, GAS TANK	
24	995346	SCREW, 1/4-20 X .50 WAHTAP	2
25	300264-853	BRACE, DASH, SUPPORT, UPPER	
26	995346	SCREW, 1/4-20 X .50 WAHTAP	2
27	305428	DASH, GP, W/O GRAPHIC, SUS, BLACK	
28	995346	SCREW, 1/4-20 X .50 WAHTAP	4
29	318868	WASHER, SHOULDER NYLON, .255 X .46	4
30	44811	SCREW, 1/4-20 X .75 WAHTAP	
31	1502	NUT, 1/4-20 REGHEXCTRLK	1
32	307058	HOOD (H-1), PLASTIC, GREY	
33	318197	PAD, ADHESIVE 1.00 X 1.50 X .12	4
34	328044	GRILL, LOWER, GPWR, LONG, G-14, GREY	1
35	300302	SCREW, #10 X .50 HHTAPPST, BLACK	4
36	310203	CLIP, HOG RING, C-SHAPED	
37	301423	BRACE, HOOD SUPPORT, H-1, GR	
38	301542	SCREW, 10-24 X 1.00 HWATAP, BLACK	
39	308459	NUT, #10-24 HXHONYLK	
40	302333	FN8, SMOKED, W/TAB, NO LOGO	1
4	3	SCREW, #6 X .50 PLASTITE/HI-LO	4
44	56876	BOLT, 3/8 X 5.80 HSSH, 5/16-18	2
45	1498	NUT, 5/16-18 REGHEXCTRLK	2
46	57478	SPRING, HOOD LATCH	2
47	301452	FOIL, HEAT REFLECTOR	1
4	8	SCREW, 5/16-18 X 1.00 HHC	2
49	1498	NUT, 5/16-18 REGHEXCTRLK	2
50	330510	STEERING WHEEL	
51	456378	PIN, SPRING .250 DIA X 2.00 LONG	
52	301413	SPACER, STEERING SHAFT	
53	301541	FOIL, REFLECTOR LENS, H-11, LH	
54	301540	FOIL, REFLECTOR LENS, H-11, RH	
	338044	PARTS MANUAL	1
	335492	OPERATOR'S MANUAL (FRENCH)	
	327627	GRASS CATCHER MANUAL	
	328195	AIR ASSIST MANUAL (ENGLISH)	
	330272	AIR ASSIST MANUAL (FRENCH)	
	330273	AIR ASSIST MANUAL (GERMAN)	

ENSEMBLE CHASSIS & CAPOT (ARRIERE)



REF.
MOTION DRIVE PLATE

REF FENDER
KEY# 70



UTILISEZ DES PIÈCES D'ORIGINE POUR
CONSERVER L'APPLICATION DE LA GARANTIE

TOUTES LES PIÈCES NON
RÉFÉRÉES SONT
INTERCHANGEABLES AVEC
LEURS OPPOSÉES.

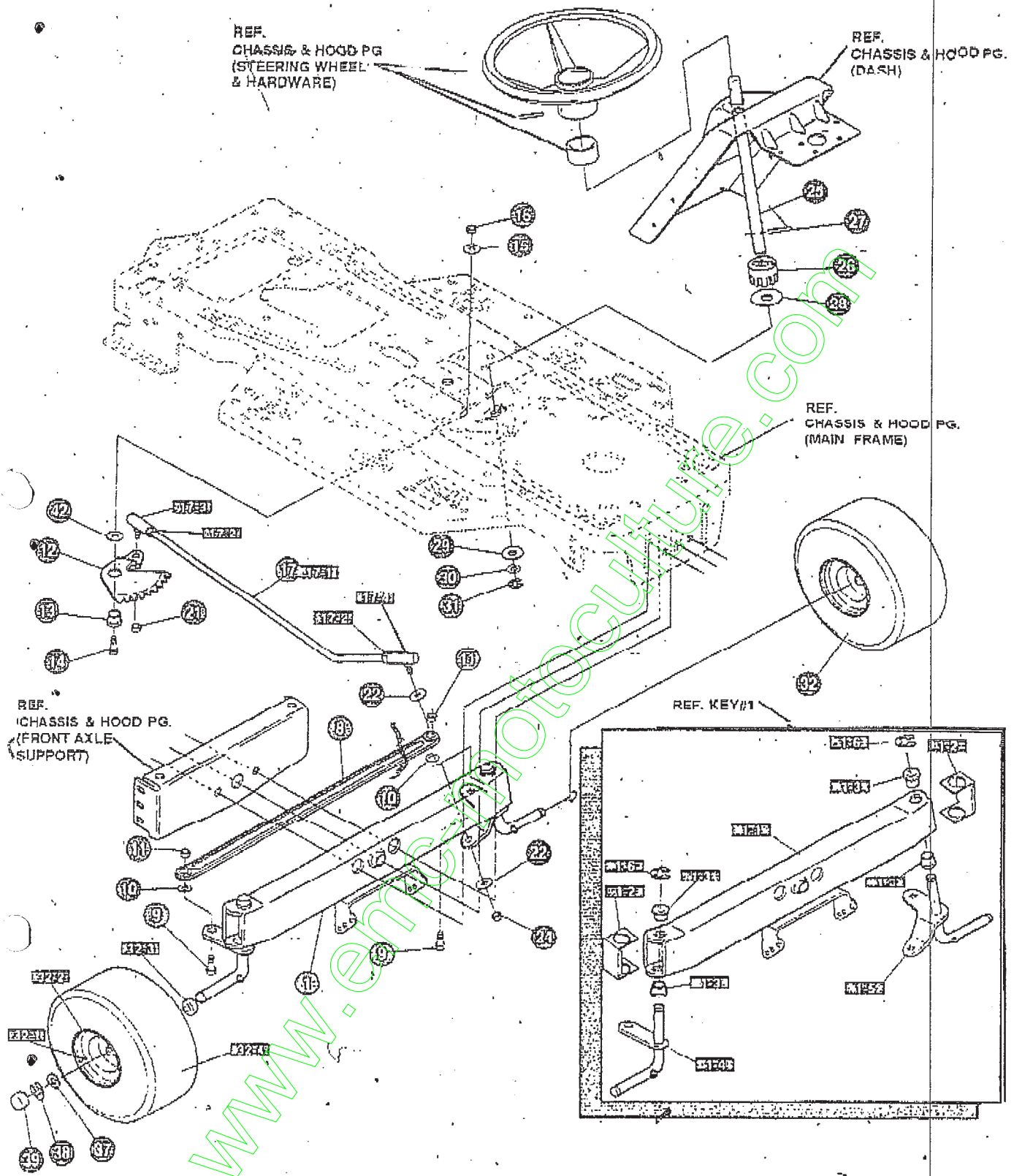
TRACTEUR TONDEUSE 40" MODÈLE F3560-260

KEY#	PART#	DESCRIPTION	QTY
55	335697-854	FRAME MAIN	1
56	310005	FOOT PAD, LH, 22.12 LONG	1
57	310006	FOOT PAD, RH, 22.12 LONG	1
5 8	309235	FASTENER, RATCHET, BLACK	12
59	327575-854	CONSOLE, NON-WALK THRU	1
60	58367-854	PLATE, SEAT	1
61	310660-854	BRACKET, SEAT SUPPORT	2
62	20507	BOLT, 437 X .156 HSSH, 5/16-18	2
6 3	1498	NUT, 5/16-18 REGHEXCTRLK	2
64	48501	SCREW, 5/16-18 X .63 WAHHC	4
65	1498	NUT, 5/16-18 REGHEXCTRLK	4
66	57153	SPRING, SEAT 2.63 LONG, 1.49 OD, BLACK	2
67	1341	CLAMP, SPRING 1.17" ID	2
68	44811	SCREW, 1/4-20 X .75 WAHHTAP	2
69	56907	COVER, SEAT SPRING, 1.5 ID X 1.0 LONG	2
70	327471-896	ASSEMBLY, FENDER	1
70-1	*	FENDER	1
70-2	9239	CLEVIS	1
70-3	439455	SCREW, 5/16-18 X .56 PHPNMA	1
70-4	301551	WASHER, .344 ID X 1.5 OD X .09 CU	1
70-5	120373	NUT, 5/16-18 SQUARE	1
76	9 9 5 3 4 8	SCREW, 1/4-20 X .80 WAHHTAP	4
77	126368	BOLT, 5/16-18 X 1.00 CARRLN	2
79	55273	NUT, 5/16-18 WDFLLKLRG WHIZ	2
80	55023	TRIM, STRIP, BLACK-SMALL, W/ADH	77 5"
81	180079	SCREW, 5/16-18 X 1.00 HHC	2
82	1498	NUT, 5/16-18 REGHEXCTRLK	2
83	332567	SEAT, MICHIGAN GEN, W/SWITCH HOLE	1
84	120393	WASHER, FLAT .344X .69 X .065	4
85	120638	WASHER, HV5PTLK .325 X .60 X .09	4
86	180077	SCREW, 5/16-18 X .75 HHC	4

. REFERENCE ONLY

www.emc.com

ENSEMBLE DE DIRECTION



UTILISEZ DES PIÈCES D'ORIGINE POUR
CONSERVER L'APPLICATION DE LA GARANTIE

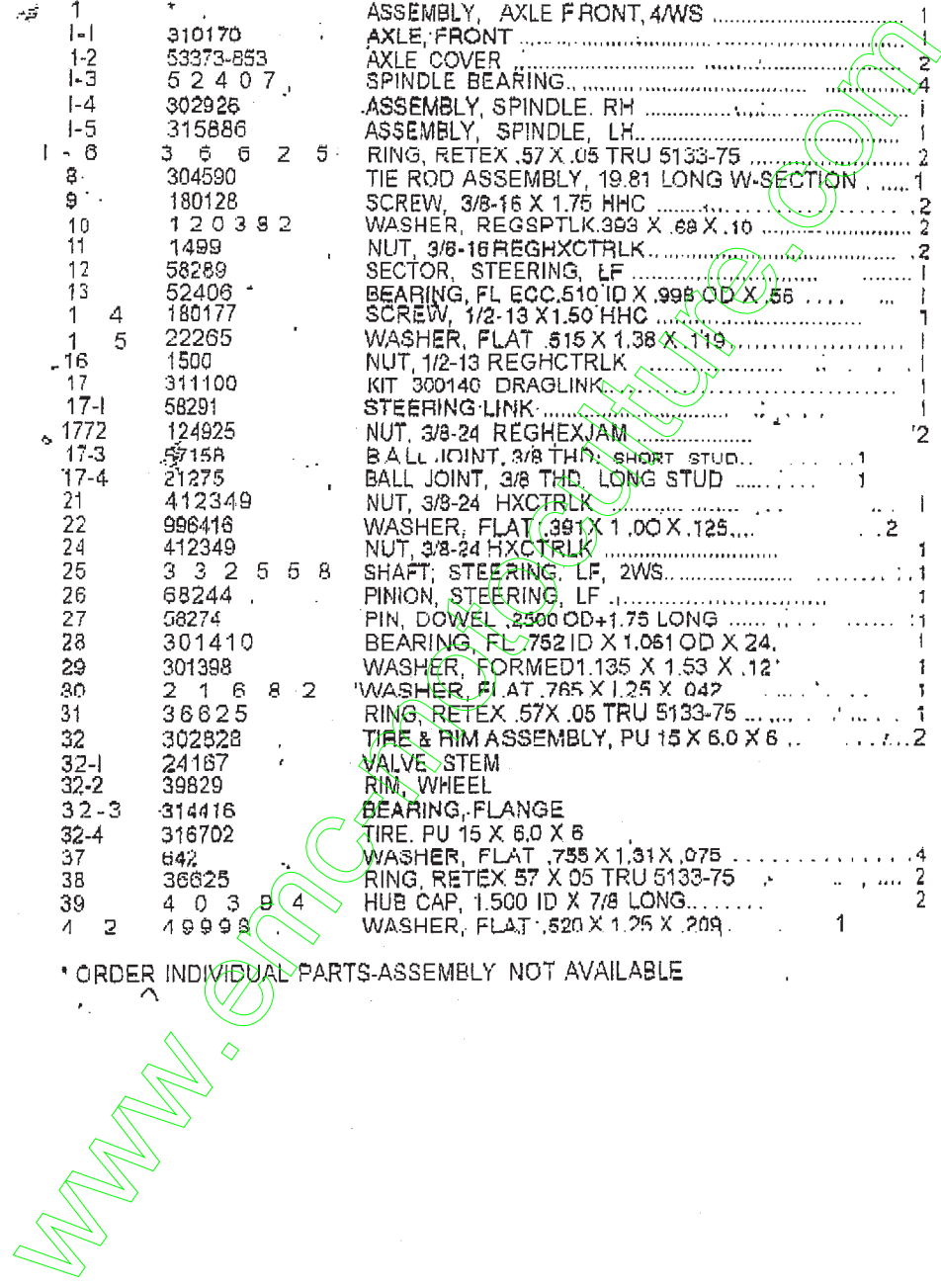
TOUTES LES PIÈCES NON
REFEREES SONT
INTERCHANGEABLES AVEC
LEURS OPPOSEES.

315136 L

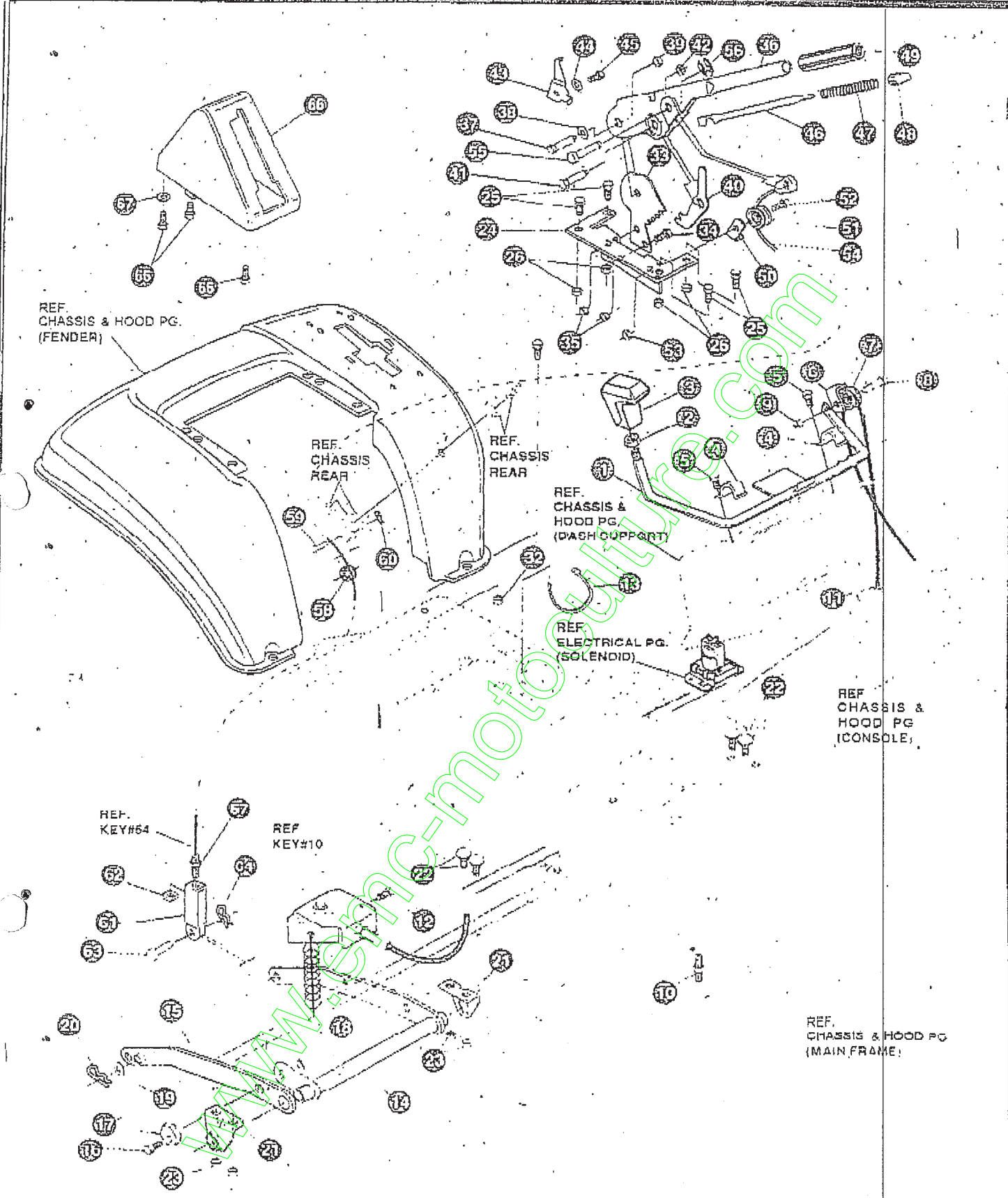
TRACTEUR TONDEUSE 40" MODÈLE F3560-260

KEY#	PART#	DESCRIPTION	QTY
1	*	ASSEMBLY, AXLE FRONT, 4WS	1
1-1	310170	AXLE, FRONT	1
1-2	53373-853	AXLE COVER	2
1-3	5 2 4 0 7	SPINDLE BEARING	4
1-4	302926	ASSEMBLY, SPINDLE, RH	1
1-5	315886	ASSEMBLY, SPINDLE, LH	1
1-6	3 6 6 2 5	RING, RETEX .57 X .05 TRU 5133-75	2
8	304590	TIE ROD ASSEMBLY, 19.81 LONG W-SECTION	1
9	180128	SCREW, 3/8-16 X 1.75 HHC	2
10	1 2 0 3 9 2	WASHER, REGSPTLK.393 X .60 X .10	2
11	1499	NUT, 3/8-16 REGHXCTRLK	2
12	58289	SECTOR, STEERING, LF	1
13	52406	BEARING, FL ECC.510 ID X .998 OD X .56	1
1 4	180177	SCREW, 1/2-13 X 1.50 HHC	1
1 5	22265	WASHER, FLAT .515 X 1.38 X .119	1
16	1500	NUT, 1/2-13 REGHCTRLK	1
17	311100	KIT 300140 DRAGLINK	1
17-1	58291	STEERING LINK	1
1772	124925	NUT, 3/8-24 REGHEXJAM	2
17-3	5715A	BALL JOINT, 3/8 THD, SHORT STUD	1
17-4	21275	BALL JOINT, 3/8 THD, LONG STUD	1
21	412349	NUT, 3/8-24 HXCTRLK	1
22	996416	WASHER, FLAT .391 X 1.00 X .125	2
24	412349	NUT, 3/8-24 HXCTRLK	1
25	3 3 2 5 5 8	SHAFT, STEERING, LF, 2WS	1
26	68244	PINION, STEERING, LF	1
27	58274	PIN, DOWEL .2500 OD+1.75 LONG	1
28	301410	BEARING, FL .752 ID X 1.061 OD X .24	1
29	301398	WASHER, FORMED 1.135 X 1.53 X .12	1
30	2 1 6 8 2	WASHER, FLAT .765 X 1.25 X .042	1
31	3 6 6 2 5	RING, RETEX .57 X .05 TRU 5133-75	1
32	302828	TIRE & RIM ASSEMBLY, PU 15 X 6.0 X 6	2
32-1	24167	VALVE STEM	1
32-2	39829	RIM, WHEEL	1
32-3	314416	BEARING, FLANGE	1
32-4	316702	TIRE, PU 15 X 6.0 X 6	1
37	642	WASHER, FLAT .755 X 1.31 X .075	4
38	3 6 6 2 5	RING, RETEX .57 X .05 TRU 5133-75	2
39	4 0 3 9 4	HUB CAP, 1.500 ID X 7/8 LONG	2
1 2	1 9 9 9 9	WASHER, FLAT .520 X 1.25 X .209	1

* ORDER INDIVIDUAL PARTS-ASSEMBLY NOT AVAILABLE



ENSEMBLE DE SUSPENSION DE LA TONDEUSE



UTILISEZ DES PIÈCES D'ORIGINE POUR
CONSERVER L'APPLICATION DE LA GARANTIE

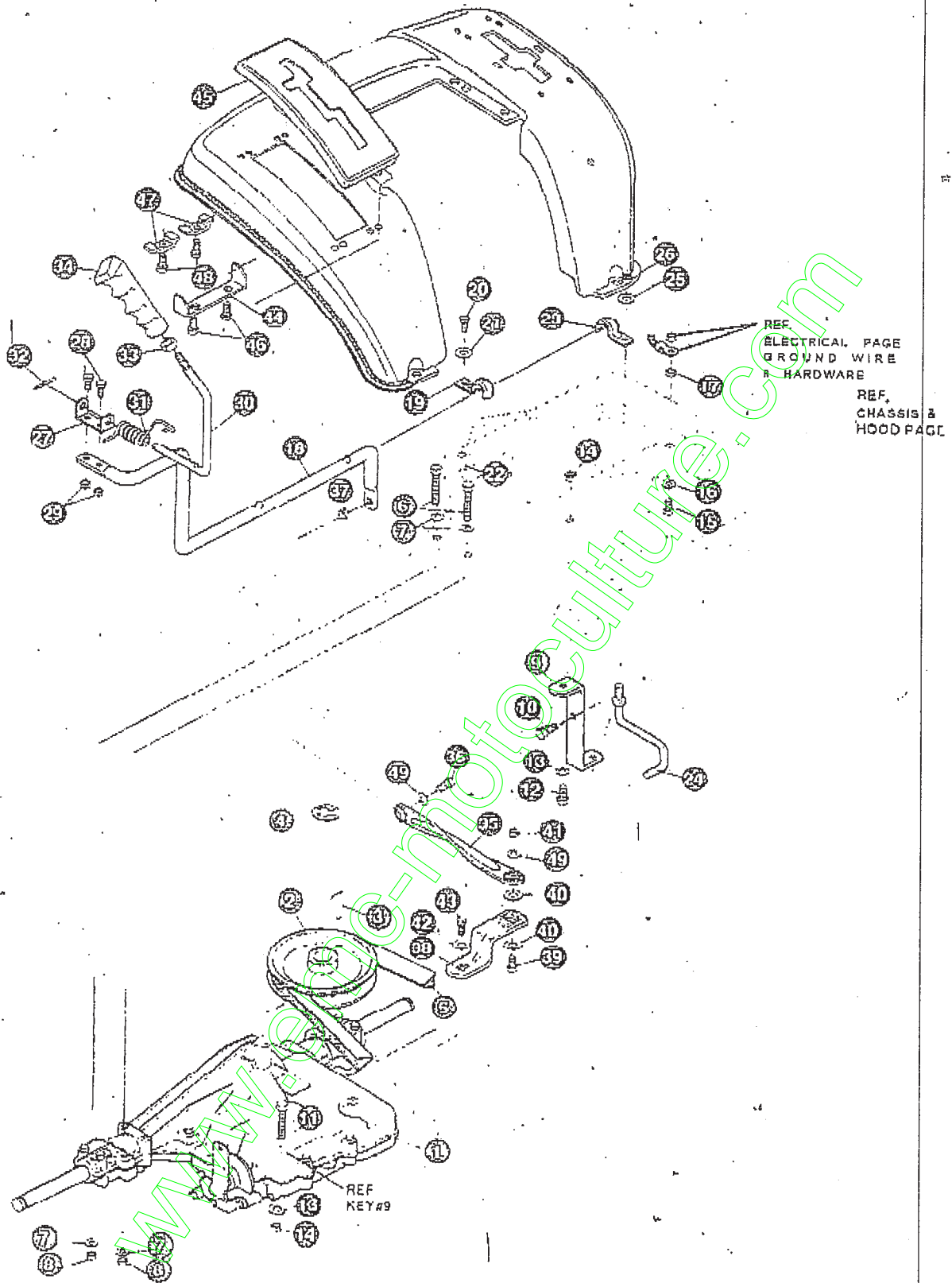
TOUTES LES PIÈCES NON
REFEREESSENT
INTERCHANGEABLES AVEC
LEURS OPPOSEES.

3155971

TRACTEUR TONDEUSE 40" MODELE F3560-260

KEY#	PART#	DESCRIPTION	QTY	
	303044-853	ASSEMBLY, WELD, CLUTCH HANDLE		
2	120238	NUT, 1/2-13 HEXJAM		
3	304438	KNOB, SHIFT, 1/2 13, BLACK	1	
4	9129	CLIP, RETAINER BRACKET	2	
5	44811	SCREW, 1/4-20 X .75 WAHTAP	2	
6	1288	BRACKET, CABLE RETAINER		
7	48306	PULLEY, POWDER METAL	1	
8	57322	BOLT, .375 X 375 HSSH, 1/4-20	1	
9	1502	NUT, 1/4-20 REGHEXCTRLK	1	
10	301491	ASSEMBLY, CLUTCH CABLE, 39" SD, SUS	1	
11	120613	NUT, 1/4-28 HJAM	1	
12	35498	SCREW, 5/16-18 X .75 WAHTAP	1	
13	57444	TIE, CABLE BLACK NYLON, 5 62 LONG	1	
14	300158-853	LIFT ASSEMBLY, LH	1	
15	300169-853	LIFT ASSEMBLY, RH	1	
16	180079	SCREW, 5/16-18 X 1 00 HHC		
17	58247	NUT, ADJUST		
18	1498	NUT, 5/16-18 REGHEXCTRLK	1	
19	417098	WASHER, FLAT .531 X 1.06 X .063	2	
20	8280	PIN, HAIR .091 DIA X 1 56 LONG	2	
21	58248-853	BRACKET, REAR HANG SUSPENSION	2	
22	57072	BOLT, 5/16-18 X .83 CARRLN	4	
23	1498	NUT, 5/16-18 REGHEXCTRLK	4	
24	313926	BRACKET, HEIGHT/ADJUST SUPPORT	1	
25	180077	SCREW, 5/16-18 X .75 HHC	4	
26	1498	NUT, 5/16-18 REGHEXCTRLK	4	
31	180077	SCREW, 5/16-18 X .75 HHC	1	
32	1498	NUT, 5/16-18 REGHEXCTRLK	1	
33	301238	QUADRANT, HEIGHT ADJUST	1	
34	180077	SCREW, 5/16-18 X .75 HHC	2	
35	1498	NUT, 5/16-18 REGHEXCTRLK	2	
36	322292-853	HANDLE, LIFT SHORT (30" S F)		
37	300171	BOLT, .500 X 270 HSSH, 5/16-18	1	
38	998418	WASHER, FLAT 506 X 75 X .024	1	
39	44108	NUT, 5/16-18 HWDFLCTRLK	1	
40	301239	PAWL, SQUARE	1	
41	300171	BOLT, .500 X 270 HSSH, 5/16-18	1	
42	44108	NUT, 5/16-18 HWDFLCTRLK	1	
43	9 4 3 5	POINTER, HEIGHT ADJUST	1	
44	130479	WASHER, EXLK 195 X .41 X .03	1	
4	5	35287	SCREW, #8-32 X 38 HHWATAP	1
46	303027	ROD, ACTUATOR - SHORT		
47	58328	SPRING, HEIGHT ADJUST		
4	8	58325	KNOB, HEIGHT ADJUST, PUSH BUTTON	
49	58329	GRIP, .750 OD W/ HOLE BLACK		
50	9149	BRACKET, CABLE RETAINER		
51	48306	PULLEY, POWDER METAL		
52	58336	BOLT, .375 X 375 HSSH 1/4-20		
53	1502	NUT, 1/4-20 REGHEXCTRLK		
54	314177	CABLE, LIFT 22 92. F-5, 20 X 3-6		
55	390310	PIN, CLEVIS 310 DIA X .475 LONG		
56	3003 11	RING, RET E 31 X 25 TRU 5133-31		
57	1 2 0 3 7 5	NUT, 1/4-20 REGHEX.	1	
58	48306	PULLEY, POWDER METAL		
59	3003 17	PIN, CLEVIS 375 DIA X .81 LONG	1	
60	8280	PIN, HAIR .091 DIA X 1 56 LONG	1	
61	9405	CLEVIS, LIFT CABLE	1	
62	120372	NUT, 1/4-20 REGSO	1	
63	39522	PIN, CLEVIS 312 X .812	1	
64	121222	PIN, COTTER .090 DIA X .75 LONG	1	
65	333903	LIFT COVER, F5, LF, SF, BLACK	1	
66	300340	SCREW, #10 X 75 HHPLAST. BLACK	3	
67	120392	WASHER, FLAT 281 X .63 X .065	1	

TRANSMISSION



UTILISEZ DES PIÈCES D'ORIGINE POUR
CONSERVER L'APPLICATION DE LA GARANTIE

TOUTES LES PIÈCES NON
REFEREES SONT
INTERCHANGEABLES AVEC
LEURS OPPOSEES.

326597 F

TRACTEUR TONDEUSE 40" MODÈLE F3560-260

KEY#	PART#	DESCRIPTION	QTY
2	3027453	TRANSAXLE, P940-6, 2WS, LF, SF	1
3	50795	PULLEY, 6 6 OD V4L T/A	1
4	22053	KEY, HI-PRO 606, 75 DIA X .187 WD	1
5	314120	RING, RETEX, 58 X .035 TRU 5100-62	1
6	180091	BELT, V 4L, #7.25, 4WS, LF	1
7	120393	SCREW, 5/16-18 X 2.50 HHC	4
8	1498	WASHER, FLAT 344 X 69 X 065	8
9	325202	NUT, 5/16-18 REGHEXCTRLK	4
10	50947	BRACKET, STABILIZER	1
11	180087	SCREW, 3/8-16 X 1.25 WAHTAP, BLACK	1
12	180079	SCREW, 5/16-18 X 2.00 HHC	2
13	120393	SCREW, 5/16-18 X 1.00 HHC	1
14	1498	WASHER, FLAT 344 X 69 X 065	2
15	180077	NUT, 5/16-18 REGHEXCTRLK	2
16	138538	SCREW, 5/16-18 X .75 HHC	1
17	1498	WASHER, REGINTLK 320 X 61 X 03	1
18	330462	NUT, 5/16-18 REGHEXCTRLK	1
19	310347-853	LEVER, SHIFT-LOWER, P940, LF	1
20	180077	CLIP, SHIFT LEVER, 625 ROD	1
21	9964 16	SCREW, 5/16-18 X 75 HHC	1
22	1498	WASHER, FLAT 391 X 1 00 X 125	1
23	310347-853	NUT, 5/16-18 REGHEXCTRLK	1
24	57259	CLIP, SHIFT LEVER, 625 ROD	1
25	9964 16	GUIDE, BELT 5/16-18 THD	1
26	1498	WASHER, FLAT 391 X 1 00 X 125	1
27	310356	NUT, 5/16-18 REGHEXCTRLK	1
28	180020	BRACKET, PIVOT, SHIFT LEVER	1
29	1592	SCREW, 1/4-20 X 75 HHC	1
30	324798	NUT, 1/4-20 REGHEXCTRLK	1
31	310265	LEVER, SHIFT, UPPER, 30F, 1/2-13	1
32	197185	SPRING, TORSION, 56 X 95 X .095	1
33	120238	PIN, COTTER 125 DIA X 1.00 LONG	1
34	306690	NUT, 1/2-13 HEXJAM	1
35	325192	HANDLE, 1/2-13 MOLDED, BLACK	1
36	180124	LINK, TIE ROD SHIFT, P940-5 & 6 SPD	1
37	1498	SCREW, 3/8-16 X 1.25 HHC	1
38	327460	NUT, 3/8-16 REGHXCTRLK	1
39	190124	BRACKET, SHIFT 6SP, LF, FENDER	1
40	120394	SCREW, 3/8-16 X 1.25 HHC	1
41	1498	WASHER, FLAT 406 X 81 X 065	1
42	57187	NUT, 3/8-16 REGHXCTRLK	1
43	56255	WASHER, 750 X 250 3P-TRANSAXLE	1
44	311257-853	SCREW, 1/4-28 X 75 NYLHHC	1
45	311209	BRACKET COVER F-5 FNDR SHIFT	1
46	311331	COVER, PLASTIC, LF, P930/F4360 6	1
47	1341	SCREW, 1/4-15 X 44/ 53 HILOHWA	1
48	311331	CLAMP, SPRING 117" ID	1
49	120394	SCREW, 1/4-15 X 44/ 53 HILOHWA	1
		WASHER, FIAT 406 X 81 X 065	1

CONTACT YOUR NEAREST TRANSAXLE DEALER FOR PARTS & SERVICE

TRANSMISSION

REF.
MAIN FRAME

REF.
ENGINE
ENGINE PAGE

REF
KEY #1

REF.
KEY #7

REF.
KEY #5

R E F .
ENGINE PAGE
ENGINE PULL I

UTILISEZ DES PIÈCES D'ORIGINE POUR
CONSERVER L'APPLICATION DE LA GARANTIE

TOUTES LES PIÈCES NON
REFEREES SONT
INTERCHANGEABLES AVEC
LEURS OPPOSEES.

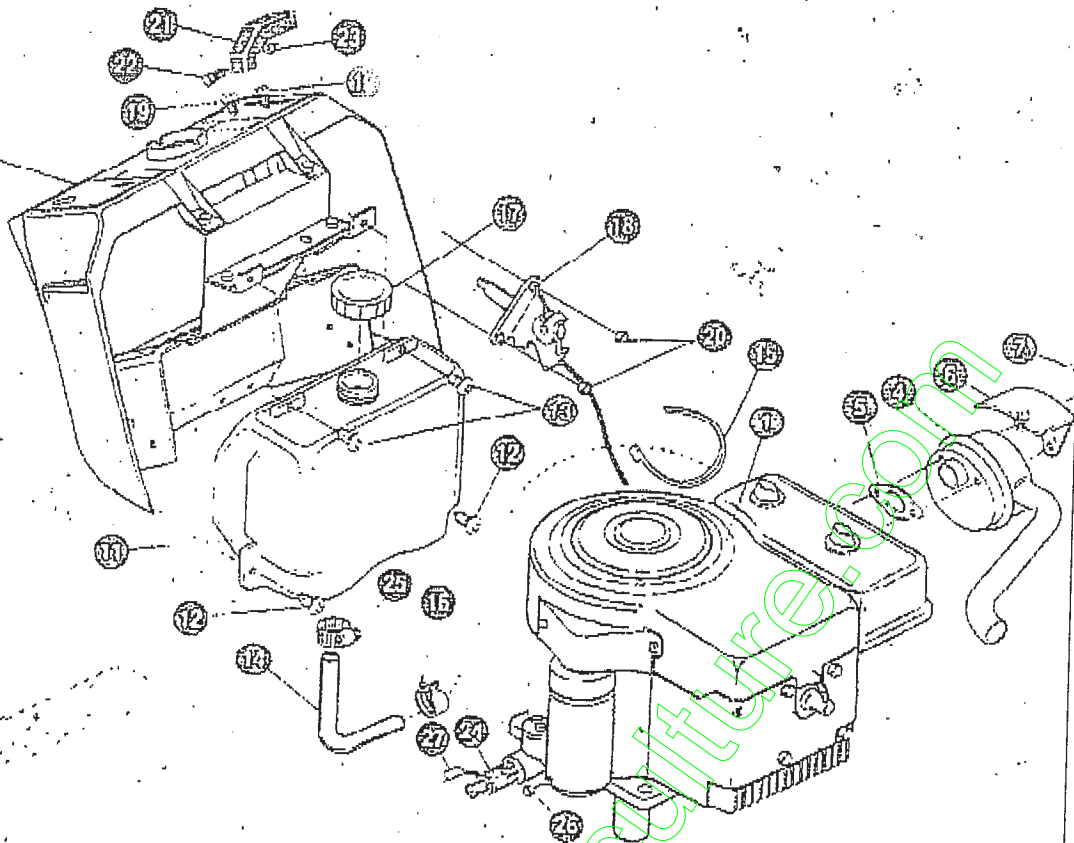
3266971-

TRACTEUR TONDEUSE 40" MODÈLE F3560-260

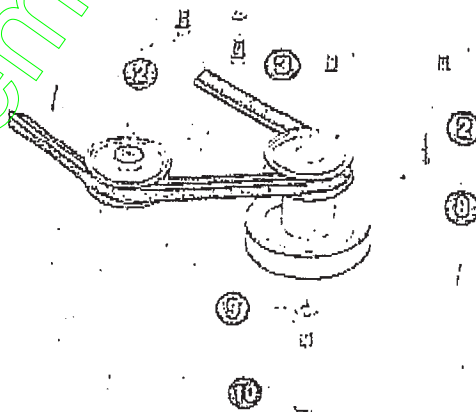
KEY#	PART#	DESCRIPTION	QTY	
60	321514	SPRING, DRAG LINK RICH	1	
6	1	304016	GUIDE, BELT, RH	1
62	1498	NUT, 5/16-18 REG HEX CTRLK	1	
63	325942	PEDAL ASSEMBLY, BRAKE/CLUTCH LF	1	
64	319675	PIN, CLEVIS .500 D X 4.53 LONG	1	
6	5	57847	SPRING, BRAKE PEDAL	1
66	2	9 6 8	WASHER, FLAT .504 X .75 X .059	3
67	56190	PIN, HAIR .091 DIA X 1.02 LONG	1	
6	8	48160	PAD, CLUTCH BRAKE, W/PRINTING	1
69	320381-853	ARM, IDLER TRACTION SQ, LF	1	
70	329959	BOLT, 625 X .135 HSSH, 5/16-18	1	
	45602	WASHER, FLAT .333 X .87 X .119	1	
3	1498	NUT, 5/16-18 REG HEX CTRLK	1	
7	3	39659	RETAINER, BELT	1
7	4	35374	PULLEY, IDLER, V4L 3.06 X .62	1
75	45892	BOLT, 3/8-16 X 1.50 CARBON	1	
76	1499	NUT, 3/8-16 REG HEX CTRLK	1	
77	57204	ROD, CLUTCH 3.92	1	
78	326131	BOLT, 495 X .31 HSSH, 5/16-18	1	
79	1498	NUT, 5/16-18 REG HEX CTRLK	1	
80	325910	SPRING, BRAKE 31.12, P940, LF	1	
8	1	330505	SPRING, CLUTCH, .113 X .750 X 8 75	1
82	57166	TIRE & RIM ASSEMBLY, 20 X 8.00-8	2	
82-1	24167	VALVE STEM		
82-2	57165	RIM, WHEEL		
82-3	3	1 9 6 8 4	TIRE, 20 X 8 X 8	
86	3	0 1 5 6 5	SPACER, SLEEVE .750 X 1.25 X 50	2
87	62928	KEY, SQUARE 197 SQUARE X 2 25 LONG	2	
88	6	4 2	WASHER, FLAT .755 X 1.31 X .075	4
8	9	42815	WASHER, FLAT 755 X 1.53 X .07	2
90	3	6 6 2 5	RING, RETEX .57 X .05 TRU 5133-75	2
91	40394	HUB CAP, 1.500 ID X 7/8 LONG	2	

ENSEMBLE DE MOTEUR

REF.
CHASSIS &
HOOD PG.
DASH



REF
CHASSIS & HOOD PG
MAIN FRAME



UTILISEZ DES PIÈCES D'ORIGINE POUR
CONSERVER L'APPLICATION DE LA GARANTIE

TOUTES LES PIÈCES NON
REFEREES SONT
INTERCHANGEABLES AVEC
LEURS OPPOSEES.

3252001

TRACTEUR TONDEUSE 40" MODÈLE F3560-260

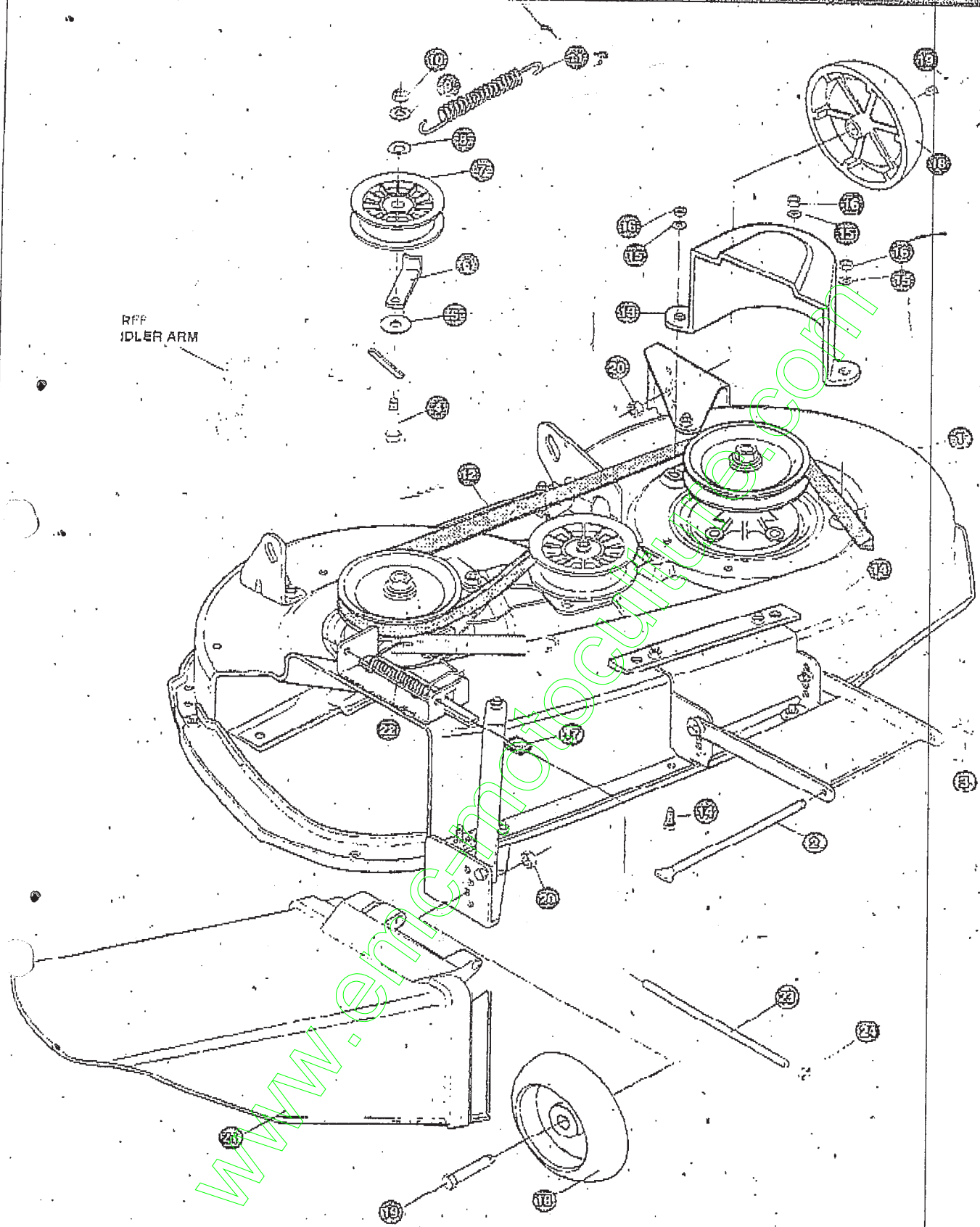
KEY#	PART#	DESCRIPTION	QTY
1		ENGINE, 12-12.5HP, B&S, IC, DUAL	1
2	50947	SCREW, 3/8-16 XI.25 WAHHTAP, BLACK	4
3	138489	WASHER, EXLK .364 X .69 X .04	1
4	305367	MUFFLER-LO TONE, NELSON EXPORT	1
5	46708	GASKET, MUFFLER	1
6	54767	SHIELD, HEAT, FOR ROUND MUFFLER	1
7	54980	SCREW, 5/16-18 X 3.50 HHC	2
8	328028	PULLEY, ENGINE, 3 OD X 4.0 LONG X 5.0 D	1
9	120383	WASHER, REGSPTLK .459 X .78 X .12	1
10	433146	SCREW, 7/16-20 X 4.25 HHC, BLACK	1
11	314991	TANK, FUEL 2-GALLON, GPWR, CLEAR-Z.	1
12	300303	SCREW, .25 X .75X 5THHWAPLASTITE	2
13	995346	SCREW, 1/4-20 X .50 WAHHTAP	2
14	50118	TUBING, .25 X .50 X BULK GAS LINE	140"
15	57444	TIE, GADLE BLACK NYLON, 5.62 LONG	1
16	336890	CLAMP, HOSE SCREW TYPE	1
17	300304	CAP, GAS 2.0 THROAT	1
18	303159	THROTTLE CONTROL, 1 1HP, B&S GP	1
19	320553	SCREW, #10-24 X .93 PHPNMA CRSS	2
20	308459	NUT, #10-24 HXHDNYLK	2
21	300508	KNOB, THROTTLE CONTROL, GP STYLE	1
22	159585	SCREW, #8-32 X .38 PHPNMA	1
23	120622	NUT, #8-32 REGHX	1
24	325547	OIL DRAIN VALVE ASSEMBLY	1
25	336890	CLAMP, HOSE SCREW TYPE	1
26	124818	NUT, 1/4-20 REGHXJAM	1
27	327422	CAP, OIL DRAIN VALVE ASSEMBLY, YELLOW 1	1

* SEE ENGINE MANUAL

TRACTEUR TONDEUSE 40" MODÈLE F3560-260

KEY#	PART#	DESCRIPTION	QTY
	325103	40" DECK KIT	1
2	322480-853	TOE GUARD - MULCHER	1
3	180077	SCREW, 5/16-18 X .75 HHC	1
4	1498	NUT, 5/16-18 REGHEXCTRLK	1
5	180077	SCREW, 5/16-18 X .75 HHC	1
6	1498	NUT, 5/16-18 REGHEXCTRLK	2
7	317017	BRACKET, CHUTE MOUNT, BLACK	1
8	120393	WASHER, FLAT .344 X .69 X .065	2
9	322320	LEVER ASSEMBLY (SHORT)	1
9-1	58319	PIN	1
9-2	322319	LEVER, CHUTE LATCH (SHORT)	1
10	180077	SCREW, 5/16-18 X .75 HHC	2
11	1498	NUT, 5/16-18 REGHEXCTRLK	2
12	3 1 3 9 2 9	LIFT BRACKET, REAR, RH, BLACK, 853	2
13	180077	SCREW, 5/16-18 X .75 HHC	2
14	1498	NUT, 5/16-18 REGHEXCTRLK	2
15	310667	BRACKET, DECK LIFT, REAR, LH, BLACK	1
16	180077	SCREW, 5/16-18 X .75 HHC	2
17	1498	NUT, 5/16-18 REGHEXCTRLK	2
18	326893 853	BRACE, IDLER SUPPORT, 40", 43"	1
19	308231	SCREW, 1/4-20 X 1 25 HHWATAP	2
20	180077	SCREW, 5/16-18 X 75 HHC	2
21	120393	WASHER, FLAT .344 X .69 X .065	2
22	44108	NUT, 5/16-18 HWDFLCIRLK	2
2 3	320576-853	IDLER ARM ASSEMBLY	1
2 3 - 1	322116-853	ARM, IDLER, 40/43" DECK	1
23-2	41601	RIVET, CVSET, .187 DIA X .50 LONG	2
23-3	306973	BRAKE PAD - HARD-NF343 (X-31)	1
24	304420	BOLT, .500 X 2.15 HHSH	1
25	996307	WASHER, FLAT .391 X 1.00 X .125	2
26	496416	WASHER, FLAT .391 X 1.00 X .125	1
27	326249-853	BRACKET, EXTENSION, IDLER	2
28	180077	SCREW, 5/16-18 X .75 HHC	2
29	1498	NUT, 5/16-18 REGHEXCTRLK	2
3 0	321828	BLADE BRAKE ASSEMBLY	1
30-1	135624	RIVET, TRSET, .186 DIA X .41 LONG	2
30-2	304119-853	BRAKE ARM	1
30-3	3 0 6 9 7 3	BRAKE PAD - HARD-NF343 (X-31)	1
31	180077	SCREW, 5/16-18 X 75 HHC	1
32	120393	WASHER, FLAT .344 X .69 X .065	1
33	1498	NUT, 5/16-18 REGHEXCTRLK	1
34	315396	ROD, BRAKE, 40" DECK	1
35	1502	NUT, 1/4-20 REGHEXCTRLK	1
36	35410	SPRING, .071 X 62 X 4 37	1
37	1498	NUT, 5/16-18 REGHEXCTRLK	1
38	56424-853	QUILL ASSEMBLY, .36/39/40/43	2
38-1	56425	SHAFT/SADDLE, 36"	1
38-2	49562	BEARING, BALL 6203-2AA-C3, ARMORED	1
38-3	50616	DUST SHIELD	1
38-4	55542	QUILL CASTING, (1046)	1
38-5	49562	BEARING, BALL 6203-2AA-C3, ARMORED	1
38-6	50616	SPACER, SLEEVE 660 X 88 X 3 797	1
38-7	51449	SPACER, SLEEVE 672 X .93 X 438	1
38-8	313896	PULLEY ASSEMBLY	1
38-9	56365	WASHER, SPECIAL QUILL	1
38-10	1282	NUT, 7/16-20 WQFLK	1
39	35498	SCREW, 5/16-18 X 75 WAHTAP	1
40	300345	SCREW, 5/16-18 X 1 38 WAHTAP	1
4 1	318445-853	BRACKET, 40", LF, FRONT, DECK	1
42	180077	SCREW, 5/16-18 X .75 HHC	1
43	328155-853	PLATE-MOUNTING	1
44	1498	NUT 5/16-18 REGHEXCTRLK	4
45	58305-853	BRACKET, LINK, DECK, FRONT	2
46	58247	NUT, ADJUSTING	2
47	180079	SCREW, 5/16-18 X 1 00 HHC	2
48	1498	NUT, 5/16-18 REGHEXCTRLK	2
49	317041	BRACKET, GAUGE WHEEL, LH, BLACK	1
50	180077	SCREW, 5/16-18 X .75 HHC	3
51	1498	NUT, 5/16-18 REGHEXCTRLK	3
52	322464 -853	BRACKET, GAUGE WHEEL, RH, FRONT	1
53	314282-853	BRACKET, STABILIZER	1
54	180077	SCREW, 5/16-18 X .75 HHC	1
55	1 2 6 8 5	SCREW, 5/16-18 X 1.50 HHCFT	1
56	1498	NUT, 5/16-18 REGHEXCTRLK	2
57	313316	BLADE, 40" STD-LIFT, 20 32, BLACK	2
58	2483	WASHER, .39 ID X 1.25 D X 07 BELLVIL	2
59	39573	SCREW, 3/8-24 X 100 NYLHHC	2
60	45171	NUT 3/8-16 HWDFL, WHIZ-LOCK	1

ENSEMBLE DE CARTER DE TONDEUSE



UTILISEZ DES PIÈCES D'ORIGINE POUR
CONSERVER L'APPLICATION DE LA GARANTIE

TOUTES LES PIÈCES NON
REFERÉES SONT
INTERCHANGEABLES AVEC
LEURS OPPOSÉS.

331145 B

TRACTEUR TONDEUSE 40" MODÈLE F3560-260

KEY#	PART#	DESCRIPTION	QTY
1	329035	ASSEMBLY, 40", DECK FOR AIR ASSIST.	1
2	58306	ROD, DECK HITCH	1
3	8260	PIN, HAIR 091 DIA X 1.66 LONG.	1
4	57325	BOLT, 3/8-16 X 2.00 CARRSN	1
5	25210	WASHER, FIAT .386 X 1.25 X .09	1
6	1346	RETAINER, BELT	1
7	310326	PULLEY, IDLER EFF. 4.00, WIDE FLANGE	1
8	996307	WASHER, FLAT .391 X 1.00 X .209	1
9	120382	WASHER, REGSPTLK .393 X .66 X .10	1
10	120377	NUT, 3/8-16 REG H X	1
11	300473	SPRING, TENSION, 7.52 LONG @ 7 LB/IN	1
12	319005	BELT, V. 5L, 81.00, DECK, 40" LF	1
13	3 2 8 2 5 7	GUARD, BELT, LH. PLASTIC	1
14	180077	SCREW, 5/16-18 X .75 REG	3
15	120393	WASHER, FIAT .344 X .69 X .065	3
16	1498	NUT, 5/16-18 REG HEX CTRLK	3
17	42348	GRIP-LEVER; GRASS COLLECTOR	1
18	302611	GAUGE WHEEL, EURO, 6.00 OD X 1.38 WD	2
19	23763	BOLT, 500 X 1.390 HSH, 3/8-16	2
20	1499	NUT, 3/8-16 REG HEX CTRLK	2
21	304422	CHUTE DEFLECTOR, 40", 42" & 43"	1
22	314975	SPRING, TORSION, CHUTE DEFLECTOR	1
23	304424	ROD, PIVOTDECK 312 D X 7.25	1
24	3 5 3 5	NUT, PUSH ON CAP 312 OD	1

www.emc-north.com

TRACTEUR TONDEUSE 40" MODÈLE F3560-260

KEY#	PART#	DESCRIPTION	Q	T	Y
1	320067	HARNESS, 12-12.5HP, HT1/G14, WRAP, LF	1		
2	41482	PRESS CLIP, 1.380 LONG .255 ID	1		
3	303064	ASSMRY, LIGHT WIRE-114 TURN	1		
4	52572	BULB, HEADLAMP	2		
5	57444	TIE, CABLE BLACK NYLON, 5.62 LONG	2		
6	41482	PRESS CLIP, 1.380 LONG .255 ID	2		
7	327355	SWITCH-IGNITION (AFTER FIRE) 3 POSITION	1		
8	327352	NUT, 5/8-8ACME DELTA FOR BOOT	1		
9	300194	BOOT, IGNITION SWITCH	1		
10	327850	KEY, IGNITION	2		
11	326653	SWITCH, SNAPSHOT, NO .055, 116 GRAY	1		
12	326654	SWITCH, SNAP MOUNT, NC .140 BLUE	2		
13	57476	SWITCH, SCREW MOUNT, DP, NC, NO, BLACK	1		
14	57220	SCREW, #12 X .50 PHNHTAP, BLACK	2		
15	53716	SOLENOID	1		
16	187745	SCREW, 1/4-20 X .75 HXSEMMA	2		
17	1502	NUT, 1/4-20 REGHEXCTRLK	2		
18	271172	NUT, 1/4-20 REGHEXREPS	1		
19	138485	WASHER, EXLK .320 X .61 X .03	2		
20	120368	NUT, 5/16-24 REGHEX	2		
21	57444	TIE, CABLE BLACK NYLON, 5.62 LONG	1		
22	55511	WIRE, GROUND, 12.5"	1		
23	271184	NUT, 5/16-18 HEXKEPS	1		
24	57769	BULB, INDICATOR	3		
25	300334	LIGHT SWITCH, ON/OFF, PANEL MOUNT	1		
26	57547	SWITCH, SEAT	1		
27	160505	SCREW, 1/4-20 X .36 PHNHTMA	2		
28	302257	BATTERY, 12V	1		
29	57551	ROD, BATTERY	1		
30	57552	ROD, BATTERY, TOP	1		
31	325232	NUT, WING 1/4-20 NYLON	1		
32	150020	SCREW, 1/4-20 X .75 HHC	2		
33	271172	NUT, 1/4-20 REGHEXKEPS	2		
36	91895	TRAY, BATTERY	1		

