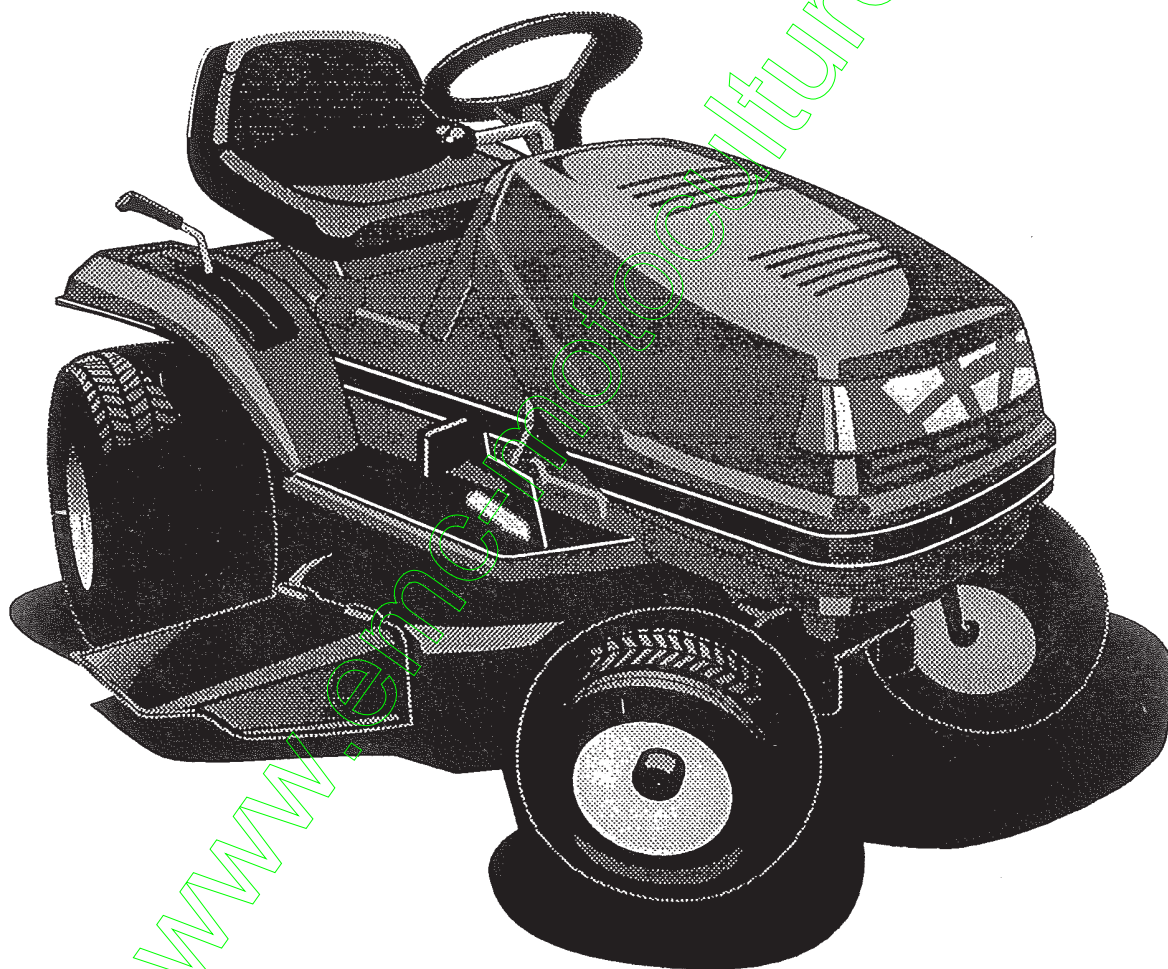


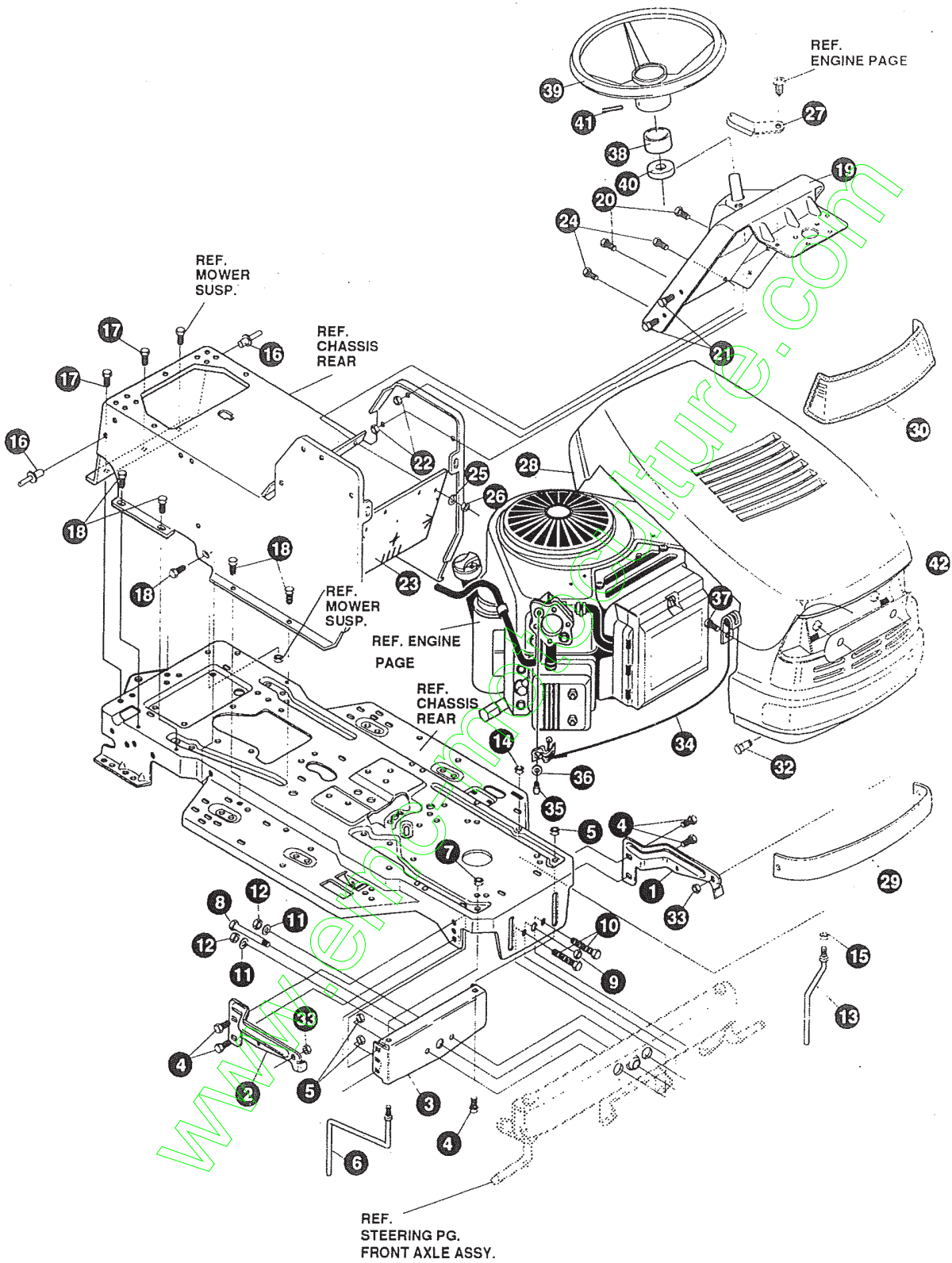
# Granja

## REPAIR PARTS MANUAL

Lawn Tractor



**Model F3560-330**

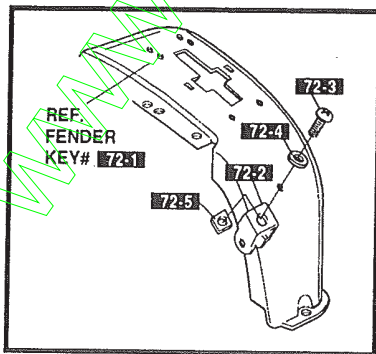
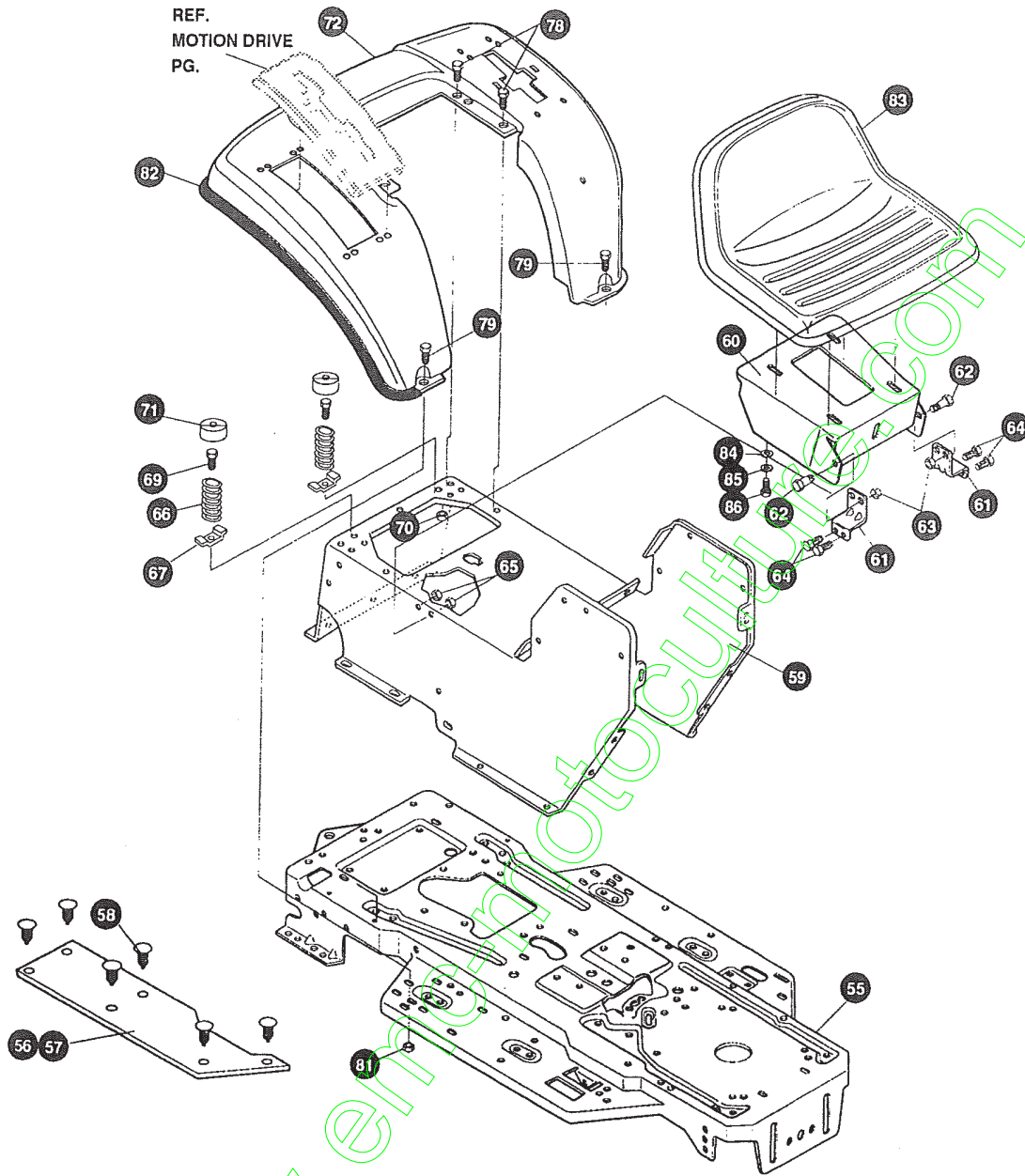


**NOTE: ALWAYS USE ORIGINAL EQUIPMENT PARTS.**  
Use of service/replacement parts other than original equipment parts may void your warranty.

**ALL UNNUMBERED  
ITEMS ARE INTERCHANGEABLE  
WITH OPPOSITE SIDE**

325867 C

KEY#	PART#	DESCRIPTION	QTY
1	326569-853	BRACKET, GRILLE, LH .....	1
2	326568-853	BRACKET, GRILLE, RH .....	1
3	313541-853	BRACKET, FRONT AXLE .....	1
4	56030	SCREW, 5/16-18 X .75 WDFLLK .....	5
5	55273	NUT, 5/16-18 WDFLLKLRG, WHIZ .....	5
6	300440	GUIDE, BELT, RIDER .....	1
7	1498	NUT, 5/16-18 REGHEXCTRLK .....	1
8	308207	BOLT, .625 X 2.18 HSH, 1/2-13 .....	1
9	309008	NUT, 1/2-13 HEXJAM CTRLK .....	1
10	180138	SCREW, 3/8-16 X 3.00 HHC .....	2
11	2483	WASHER, .39 ID X 1.25 D X .07 BELLVIL .....	2
12	1499	NUT, 3/8-16 REGHXCTRLK .....	2
13	300635	GUIDE, BELT SHORT, 15" WHEEL .....	1
14	124824	NUT, 5/16-18 HEXJAM .....	1
15	271190	NUT, 3/8-16 HEXKEPS .....	1
16	46763	RIVET, POP .187 DIA X .450 LONG .....	3
17	35497	SCREW, 5/16-18 X .50 WAHHTAP .....	2
18	995346	SCREW, 1/4-20 X .50 WAHHTAP .....	10
19	309447-860	DASH, STEEL, LF, SUSP .....	1
20	995346	SCREW, 1/4-20 X .50 WAHHTAP .....	2
21	44811	SCREW, 1/4-20 X .75 WAHHTAP .....	4
22	50352	NUT, 1/4-20 WDFLLK TOPLOCK .....	4
23	312306	BAFFLE, CONSOLE, SOUND, EXPORT, LF .....	1
24	300314	SCREW, 1/4-20 X .88 WAHHTAP .....	2
25	120392	WASHER, FLAT .281 X .63 X .065 .....	2
26	1502	NUT, 1/4-20 REGHEXCTRLK .....	2
27	313021-853	GUIDE, HOOD, SF & LF, H13, H14, H15 .....	2
28	321159	HOOD, NOMA LARGE, H-15 .....	1
29	319986	DECAL TAPE, H15, 8MIL VINYL .....	1
30	302670	LENS, HEADLAMP DYNA HOODS .....	1
32	56676	BOLT, .375 X .580 HSH, 5/16-18 .....	2
33	1498	NUT, 5/16-18 REGHEXCTRLK .....	2
34	311094	LANYARD, HOOD, 11.75 LONG, H15 VANG .....	1
35	180020	SCREW, 1/4-20 X .75 HHC .....	1
36	120380	WASHER, REGSPTLK .263 X .49 X .07 .....	1
37	49050	SCREW, 1/4-10 X .75 PHPNTAP .....	1
38	311465	COVER, STEERING SHAFT .....	1
39	330848	STEERING WHEEL .....	1
40	301413	SPACER, STEERING SHAFT .....	1
41	456378	PIN, SPRING .250 DIA X 2.00 LONG .....	1
42	308492	FOIL, LENS, DYNA HOOD, REFLECTOR .....	1
	336415	PARTS MANUAL .....	1
	336434	OPERATOR'S MANUAL (FRENCH) .....	1
	327627	GRASS CATCHER MANUAL .....	1
	328195	AIR ASSIST MANUAL (ENGLISH) .....	1
	330272	AIR ASSIST MANUAL (FRENCH) .....	1
	330273	AIR ASSIST MANUAL (GERMAN) .....	1



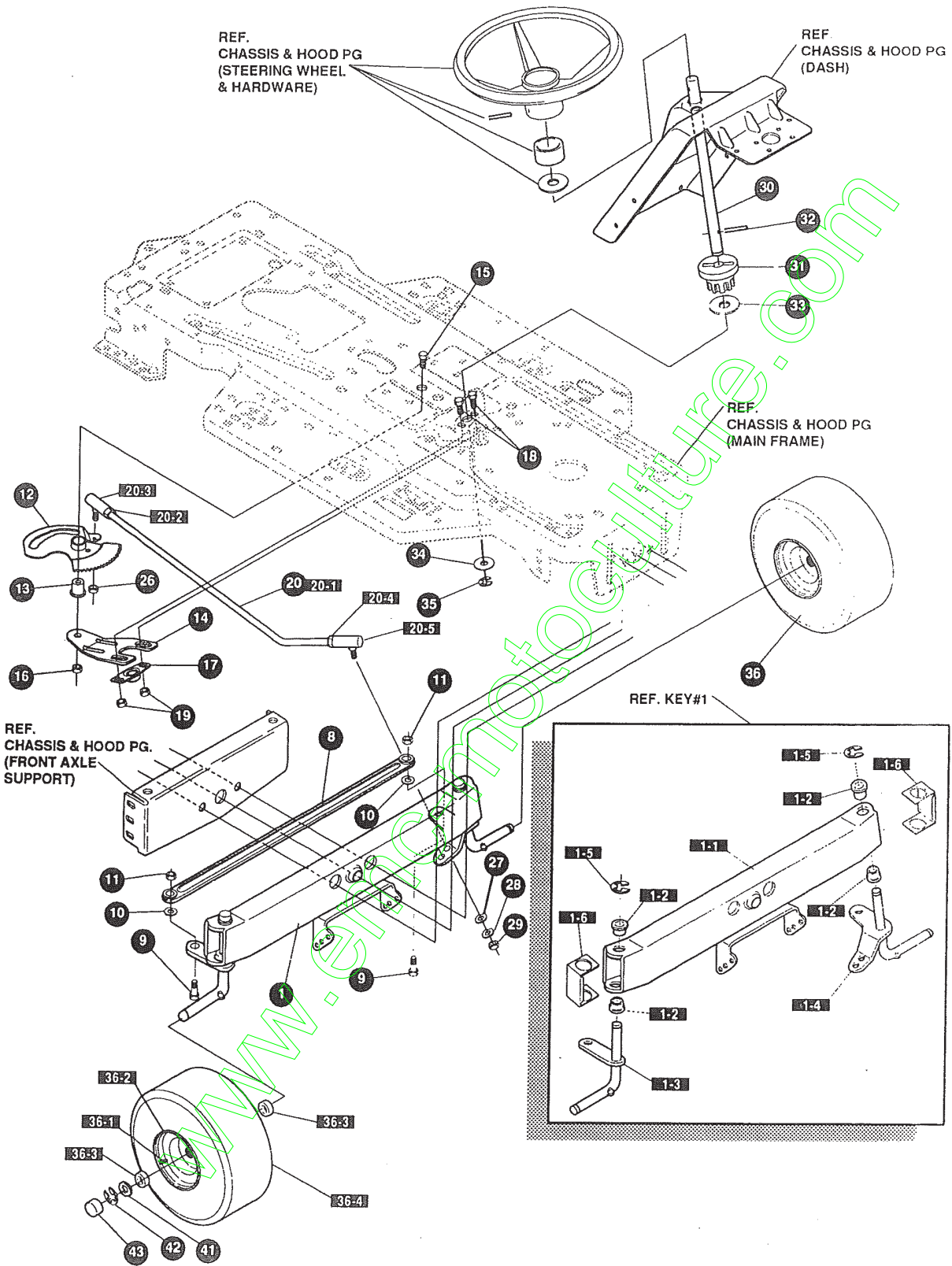
**NOTE: ALWAYS USE ORIGINAL EQUIPMENT PARTS.**  
 Use of service/replacement parts other than original equipment parts may void your warranty.

**ALL UNNUMBERED ITEMS ARE INTERCHANGEABLE WITH OPPOSITE SIDE**

325906 D

KEY#	PART#	DESCRIPTION	QTY
55	335697-860	FRAME, LF MAIN P920/F4360 .....	1
56	310005	FOOT PAD, LH, 22.12 LONG DYNA, F-5 .....	1
57	310006	FOOT PAD, RH, 22.12 LONG DYNA, F-5 .....	1
58	309235	FASTENER, RATCHET, BLACK .....	12
59	308665-860	CONSOLE, H14-15, SOF .....	1
60	58221-860	PLATE, SEAT, LF, F4, F5-SOG .....	1
61	53746-860	BRACKET, SEAT SUPPORT, F4, F5-SOG .....	2
62	20507	BOLT, .437 X .156 HSSH, 5/16-18 .....	2
63	1498	NUT, 5/16-18 REGHEXCTRLK .....	2
64	48901	SCREW, 5/16-18 X .63 WAHHC .....	4
65	1498	NUT, 5/16-18 REGHEXCTRLK .....	4
66	49335	SPRING, .250 X 1.75 X 4.50 .....	2
67	7686	CLAMP, SPRING .....	2
69	44811	SCREW, 1/4-20 X .75 WAHTAP .....	2
70	1502	NUT, 1/4-20 REGHEXCTRLK .....	2
71	53205	COVER, SEAT SPRING 2.25 ID .....	2
72	*	ASSEMBLY, FENDER F5, LF, SOF, SUSP .....	1
72-1	332185-860	FENDER, F5, SUS, LF, SOF .....	1
72-2	9239	CLEVIS .....	1
72-3	439455	SCREW, 5/16-18 X .56 PHPNMA .....	1
72-4	301551	WASHER, .344 ID X 1.50 D X .09 .....	1
72-5	120373	NUT, 5/16-18 SQUARE .....	1
78	995346	SCREW, 1/4-20 X .50 WAHTAP .....	4
79	126358	BOLT, 5/16-18 X 1.00 CARRLN .....	2
81	55273	NUT, 5/16-18 WDFLLKLRG, WHIZ .....	2
82	55023	TRIM, STRIP, BLACK—SMALL, W/ ADH .....	75.0"
83	57455	SEAT, MICHIGAN GEN, W/SWITCH HOLE .....	1
84	120393	WASHER, FLAT .344 X .69 X .065 .....	4
85	120638	WASHER, HVSPTLK .328 X .60 X .09 .....	4
86	180077	SCREW, 5/16-18 X .75 HHC .....	4

\* ORDER INDIVIDUAL PARTS - ASSEMBLY NOT AVAILABLE



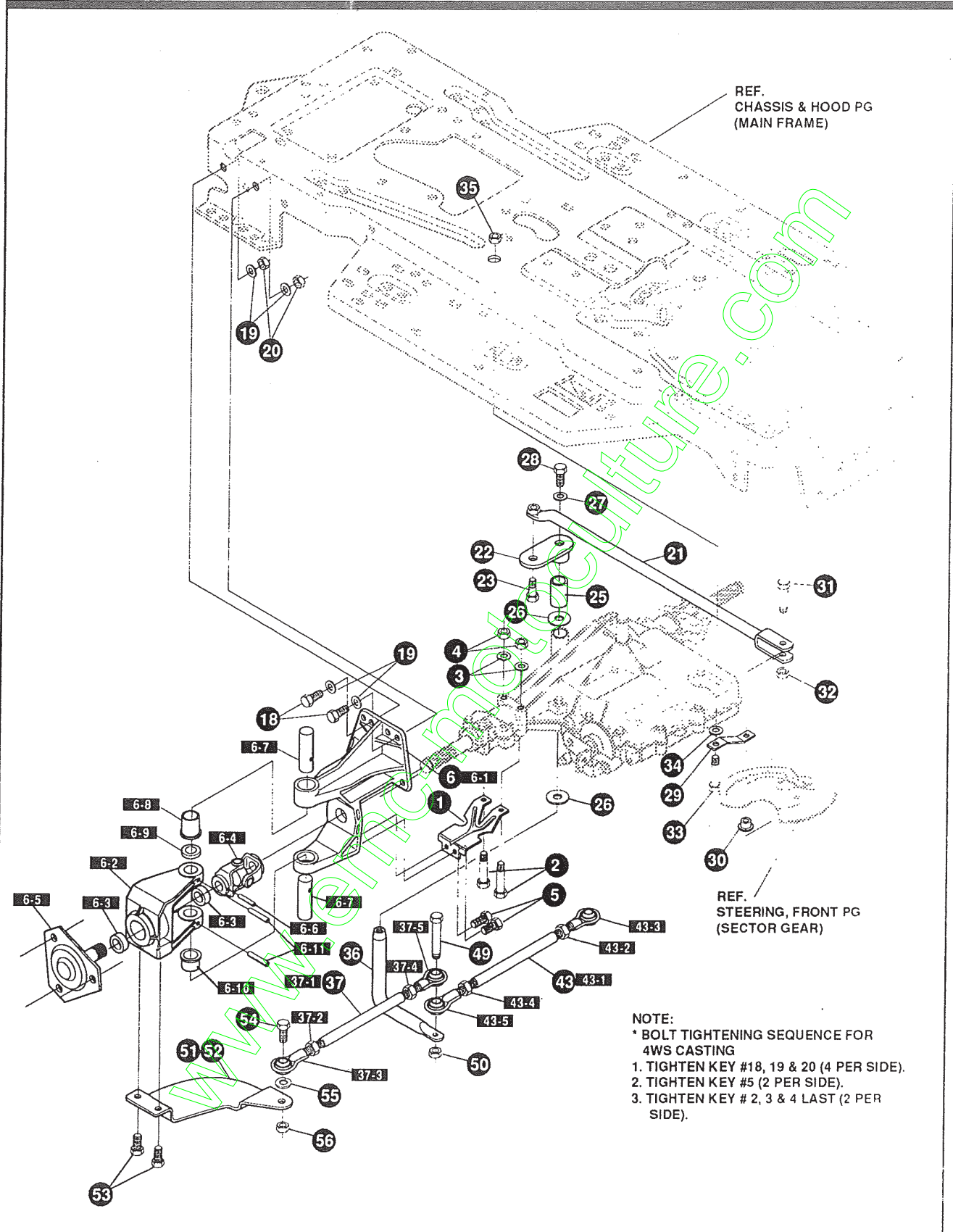
**NOTE: ALWAYS USE ORIGINAL EQUIPMENT PARTS.**  
 Use of service/replacement parts other than original equipment parts may void your warranty.

**ALL UNNUMBERED ITEMS ARE INTERCHANGEABLE WITH OPPOSITE SIDE**

317127 F

KEY#	PART#	DESCRIPTION	QTY
1	*	AXLE, FRONTASSEMBLY, LONG, SUS, 4WS, LF	1
1-1	310170	AXLE, FRONT	1
1-2	52407	SPINDLE BEARING	4
1-3	9180	ASSEMBLY, SPINDLE, RH, LONG	1
1-4	314088	ASSEMBLY, SPINDLE, LH, LONG	1
1-5	36625	RING, RETEX .57 X .05 TRU 5133-75	2
1-6	53373-853	AXLE COVER	2
8	304590	TIE ROD ASSEMBLY, 19.81 LONG (W-SECTION)	1
9	180128	SCREW, 3/8-16 X 1.75 HHC	2
10	120382	WASHER, REGSPTLK .393 X .68 X .10	2
11	120369	NUT, 3/8-24 REGHEX	2
12	313634	ASSEMBLY, SECTOR GEAR, BLACK	1
13	313629	BEARING, SLEEVE	1
14	313671-853	SUPPORT, SECTOR GEAR, 4WS, LF	1
15	315196	SCREW, 1/2-20 X 3.00 HHC	1
16	274654	NUT, 1/2-20 REGHXCTRLK	1
17	302498	BEARING, SFAL .500 ID X OD X .75	1
18	323731	SCREW, 5/16-24 X .75 (TO 30-35 FT#)	2
19	71100	NUT, 5/16-24 HEXWDFLLK	2
20	323752	ASSEMBLY, DRAG LINK, 4WS, GEAR, LF	1
20-1	321449	DRAG LINK, 625 DIA FOR 4WS, LF	1
20-2	124925	NUT, 3/8-24 REGHEXJAM	1
20-3	57158	BALL JOINT, 3/8 THD SHORT STUD	1
20-4	272123	NUT, 7/16-20 HXJAM	1
20-5	302865	BALL JOINT, 7/16-20	1
26	46692	NUT, 3/8-24 WDFLHLK, WHIZ	1
27	120396	WASHER, FLAT .531 X 1.06 X .095	1
28	120383	WASHER, REGSPTLK .459 X .78 X .12	1
29	271506	NUT, 7/16-20 REGHX	1
30	313699	SHAFT, STEERING, 4WS, LF	1
31	302314	PINION, STEERING	1
32	302524	PIN, DOWEL, STEER, EURO-LT	1
33	315194	WASHER, FLAT .51 X 1.38 X .043	1
34	2968	WASHER, FLAT .504 X .75 X .059	1
35	20864	RING, RET E .39 X .04 TRU 5133-50	1
36	*	TIRE & RIM, PU 15 X 6.0 X 6	2
36-1	24167	VALVE STEM	
36-2	39829	RIM, WHEEL	
36-3	314416	BEARING, FLANGE	
36-4	TIRE	REFER TO TIRE TREAD PAGE	
41	642	WASHER, FLAT .755 X 1.31 X .075	4
42	36625	RING, RETEX .57X.05TRU5133-75	2
43	40394	HUB CAP, 1.500 ID X 7/8 LONG	2

\* ORDER INDIVIDUAL PARTS - ASSEMBLY NOT AVAILABLE



REF.  
CHASSIS & HOOD PG  
(MAIN FRAME)

REF.  
STEERING, FRONT PG  
(SECTOR GEAR)

NOTE:  
\* BOLT TIGHTENING SEQUENCE FOR  
4WS CASTING  
1. TIGHTEN KEY #18, 19 & 20 (4 PER SIDE).  
2. TIGHTEN KEY #5 (2 PER SIDE).  
3. TIGHTEN KEY # 2, 3 & 4 LAST (2 PER  
SIDE).

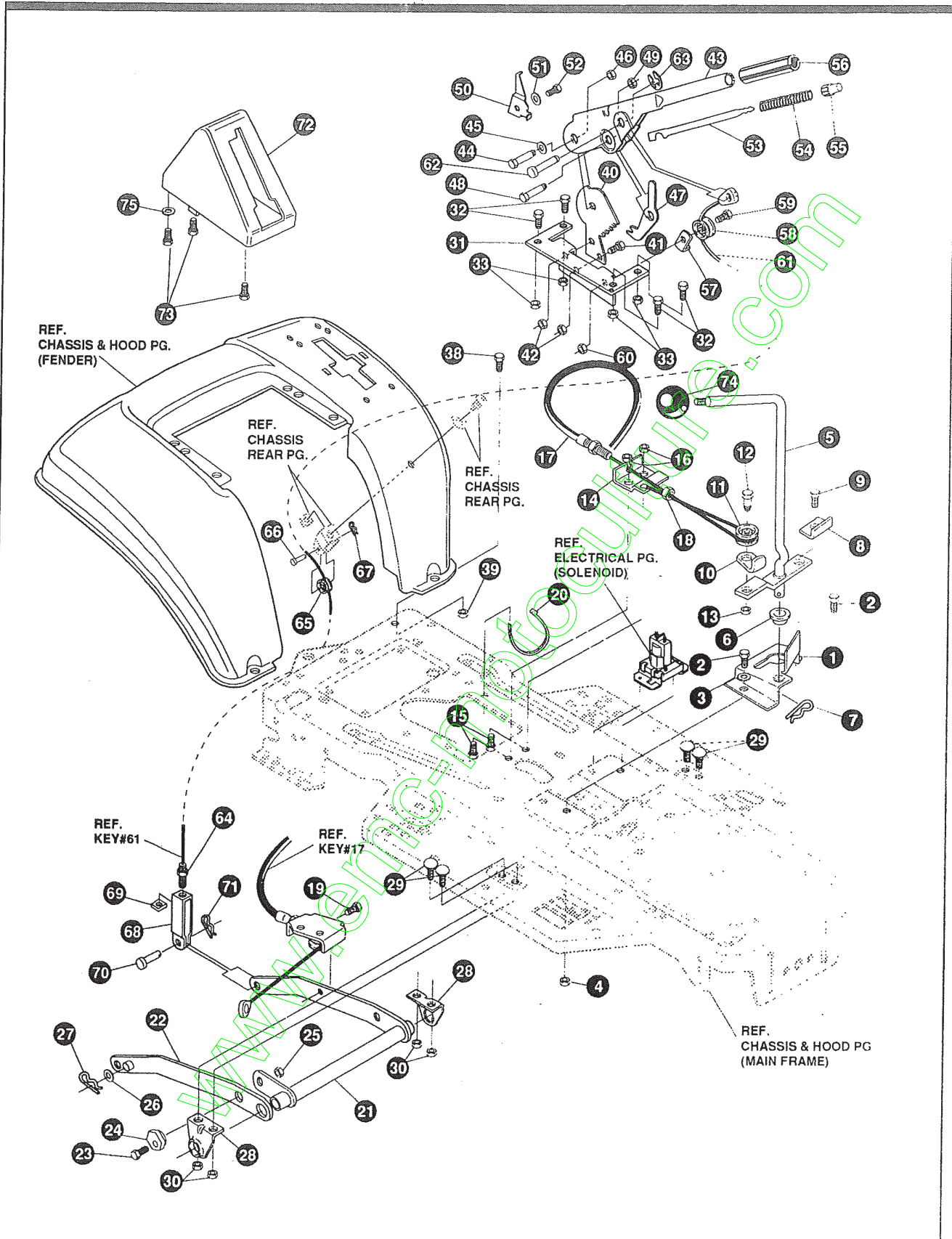
NOTE: ALWAYS USE ORIGINAL EQUIPMENT PARTS.  
Use of service/replacement parts other than original  
equipment parts may void your warranty.

ALL UNNUMBERED  
ITEMS ARE INTERCHANGEABLE  
WITH OPPOSITE SIDE

315291 N



KEY#	PART#	DESCRIPTION	QTY
1	303222-853	BRACKET, X-AXLE MTG, 4WS	2
2	180091	SCREW, 5/16-18 X 2.50 HHC	4
3	120393	WASHER, FLAT .344 X .69 X .065	4
4	1498	NUT, 5/16-18 REGHEXCTRLK	4
5	35498	SCREW, 5/16-18 X .75 WAHTAP	4
6	323766	U-JOINT ASSEMBLY, 4WS, LD, LF	2
6-1	314267	BRACKET, STEERING PIVOT, DRILLED	1
6-2	12465	BRACKET, STEERING PIVOT	1
6-3	12325	BEARING, BALL 6203-2AA-3/4	2
6-4	12290	U-JOINT ASSEMBLY (SIM TO 320531)	1
6-5	12280-853	HUB ASSEMBLY	1
6-6	36311	PIN, GROOVED .250 DIA X 1.50 LONG	1
6-7	12289	PIN, STEERING HINGE	2
6-8	*	NON-SERVICEABLE PART - (ORDER #324578)	1
6-9	21682	WASHER, FLAT .765 X 1.25 X .042	1
6-10	*	NON-SERVICEABLE PART - (ORDER #324578)	1
6-11	456722	PIN, SPRING .250 DIA X 1.50 LONG	2
18	180079	SCREW, 5/16-18 X 1.00 HHC	8
19	120393	WASHER, FLAT .344 X .69 X .065	16
20	1498	NUT, 5/16-18 REGHEXCTRLK	8
21	324514	ROD ASSEMBLY, DRAGLINK, 4WS, LF, BLACK	1
22	308719	PIVOT, STEERING	1
23	12319	BOLT, .562 X .340 HHSH, 3/8-24	1
25	304115	SPACER, STEERING SHAFT	1
26	25177	WASHER, FLAT .765 X 1.19 X .048	2
27	45602	WASHER, FLAT .333 X .87 X .119	1
28	421051	SCREW, 5/16-24 X 1.00 HHC	1
29	302594	FOLLOWER, ROLLER	1
30	304116	CAM YOKE ROLLER	1
31	304122	BOLT, .625 X 1.175 HHSH	1
32	274654	NUT, 1/2-20 REGHXCTRLK	1
33	324638	BOLT, .265 X .980 HHSH, 3/8-24	1
34	996307	WASHER, FLAT .391 X 1.00 X .209	1
35	412349	NUT, 3/8-24 HXCTRLK	1
36	308720	SHAFT, STEERING PIVOT	1
37	323634	TIE ROD, ASSEMBLY, RH, EURO, 4WS & LF, STD	1
37-1	308447	ROD, TIE 1/2"D X 8.12 LONG	1
37-2	308399	NUT, 3/8-24 LH THD REGHJAM	1
37-3	308384	BALL JOINT, LH, 3/8-24	1
37-4	124925	NUT, 3/8-24 REGHEXJAM	1
37-5	304260	BALL JOINT, RH, 3/8-24	1
43	323635	TIE ROD, ASSEMBLY, LH, EURO, 4WS & LF, STD	1
43-1	308446	ROD, TIE 1/2"D X 9.75 LONG	1
43-2	308399	NUT, 3/8-24, LH, THD REGHJAM	1
43-3	308384	BALL JOINT, LH, 3/8-24	1
43-4	124925	NUT, 3/8-24 REGHEXJAM	1
43-5	304260	BALL JOINT, RH, 3/8-24	1
49	181646	SCREW, 3/8-24 X 1.75 HHC	1
50	412349	NUT, 3/8-24 HXCTRLK	1
51	304120-853	ARM, REAR WHEEL STEER, RH	1
52	304121-853	ARM, REAR WHEEL STEER, LH	1
53	39728	SCREW, 3/8-16 X .75 WAHTAP	4
54	181639	SCREW, 3/8-24 X 1.25 HHC	2
55	120382	WASHER, REGSPTLK .393 X .68 X .10	2
56	412349	NUT, 3/8-24 HXCTRLK	2

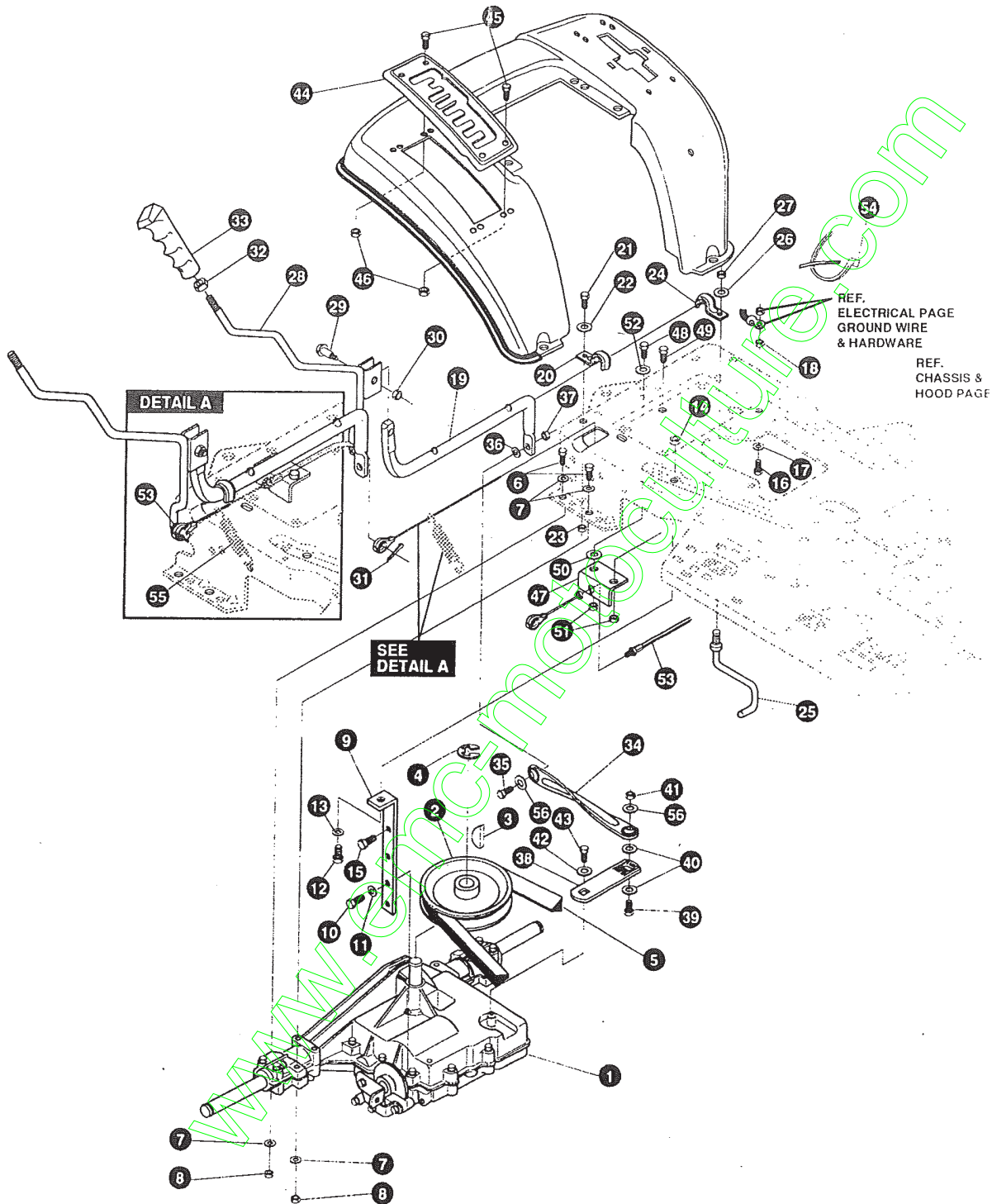


**NOTE: ALWAYS USE ORIGINAL EQUIPMENT PARTS.**  
 Use of service/replacement parts other than original equipment parts may void your warranty.

**ALL UNNUMBERED ITEMS ARE INTERCHANGEABLE WITH OPPOSITE SIDE**

315815 F

KEY#	PART#	DESCRIPTION	QTY
1	320075-853	BRACKET, CLUTCH ENGAGE LEVER	1
2	180079	SCREW, 5/16-18 X 1.00 HHC	2
3	120393	WASHER, FLAT .344 X .69 X .065	2
4	1498	NUT, 5/16-18 REGHEXCTRLK	2
5	304791	ASSEMBLY, CLUTCH LEVER	1
6	50148	BEARING, FLANGE .503 ID X .63 OD X .50	1
7	8260	PIN, HAIR .091 DIA X 1.66 LONG	1
8	318341	BRACKET, SWITCH ENGAGE	1
9	35498	SCREW, 5/16-18 X .75 WAHHTAP	1
10	1288	BRACKET, CABLE RETAINER	1
11	48306	PULLEY, METAL	1
12	58336	BOLT, .375 X .375 HSSH, 1/4-20	1
13	1502	NUT, 1/4-20 REGHEXCTRLK	1
14	300698-853	BRACKET, FRAME CABLE	1
15	180020	SCREW, 1/4-20 X .75 HHC	2
16	1502	NUT, 1/4-20 REGHEXCTRLK	2
17	301503	ASSEMBLY, CABLE, BLADE ENGAGE	1
18	120613	NUT, 1/4-28 HJAM	1
19	35498	SCREW, 5/16-18 X .75 WAHHTAP	1
20	57444	TIE, CABLE BLACK NYLON, 5.62 LONG	1
21	300158-853	LIFT ASSEMBLY, LH	1
22	300169-853	LIFT ASSEMBLY, RH	1
23	180079	SCREW, 5/16-18 X 1.00 HHC	1
24	58247	NUT, ADJUST	1
25	1498	NUT, 5/16-18 REGHEXCTRLK	1
26	417098	WASHER, FLAT .531 X 1.06 X .063	2
27	8260	PIN, HAIR .091 DIA X 1.66 LONG	2
28	58248-853	BRACKET, REAR HANG SUSPENSION	2
29	57072	BOLT, 5/16-18 X .63 CARRLN	4
30	1498	NUT, 5/16-18 REGHEXCTRLK	4
31	313926	BRACKET, HEIGHT ADJUST SUPPORT	1
32	180077	SCREW, 5/16-18 X .75 HHC	4
33	1498	NUT, 5/16-18 REGHEXCTRLK	4
38	180077	SCREW, 5/16-18 X .75 HHC	1
39	1498	NUT, 5/16-18 REGHEXCTRLK	1
40	301238	QUADRANT, HEIGHT ADJUST	1
41	180077	SCREW, 5/16-18 X .75 HHC	2
42	1498	NUT, 5/16-18 REGHEXCTRLK	2
43	322292-853	HANDLE, LIFT SHORT (30" S.F.)	1
44	300171	BOLT, .500 X .270 HSSH, 5/16-18	1
45	996418	WASHER, FLAT .506 X .75 X .024	1
46	44108	NUT, 5/16-18 HWDFLCTRLK	1
47	301239	PAWL, SQUARE	1
48	300171	BOLT, .500 X .270 HSSH, 5/16-18	1
49	44108	NUT, 5/16-18 HWDFLCTRLK	1
50	9435	POINTER, HEIGHT ADJUST	1
51	138479	WASHER, EXLK .195 X .41 X .03	1
52	35287	SCREW, #8-32 X .38 HHWATAP	1
53	303027	ROD, ACTUATOR-SHORT	1
54	58326	SPRING, HEIGHT ADJUST	1
55	58325	KNOB, HEIGHT ADJUST, PUSH BUTTON	1
56	58329	GRIP, .750 OD, W/ HOLE BLACK	1
57	9149	BRACKET, CABLE RETAINER	1
58	48306	PULLEY, METAL	1
59	58336	BOLT, .375 X .375 HSSH, 1/4-20	1
60	1502	NUT, 1/4-20 REGHEXCTRLK	1
61	314177	CABLE, LIFT, 22.92, F-5, 20 X 8-8	1
62	300310	PIN, CLEVIS .310 DIA+ .475 LONG	1
63	300311	RING, RET E .31 X .25 TRU 5133-31	1
64	120375	NUT, 1/4-20 REGHEX	1
65	48306	PULLEY, METAL	1
66	300317	PIN, CLEVIS .375 DIA X .81 LONG	1
67	8260	PIN, HAIR .091 DIA X 1.66 LONG	1
68	9405	CLEVIS, LIFT CABLE	1
69	120372	NUT, 1/4-20 REGSQ	1
70	39522	PIN, CLEVIS .312 X .812	1
71	121222	PIN, COTTER .090 DIA X .75 LONG	1
72	333903	LIFT COVER, F5, LF, SF, BLACK	1
73	300340	SCREW, #10 X .75 HHPLAST, BLACK	3
74	55514	KNOB, ROUND 1.50 DIA, BLACK	1
75	120392	WASHER, FLAT .281 X .63 X .065	1



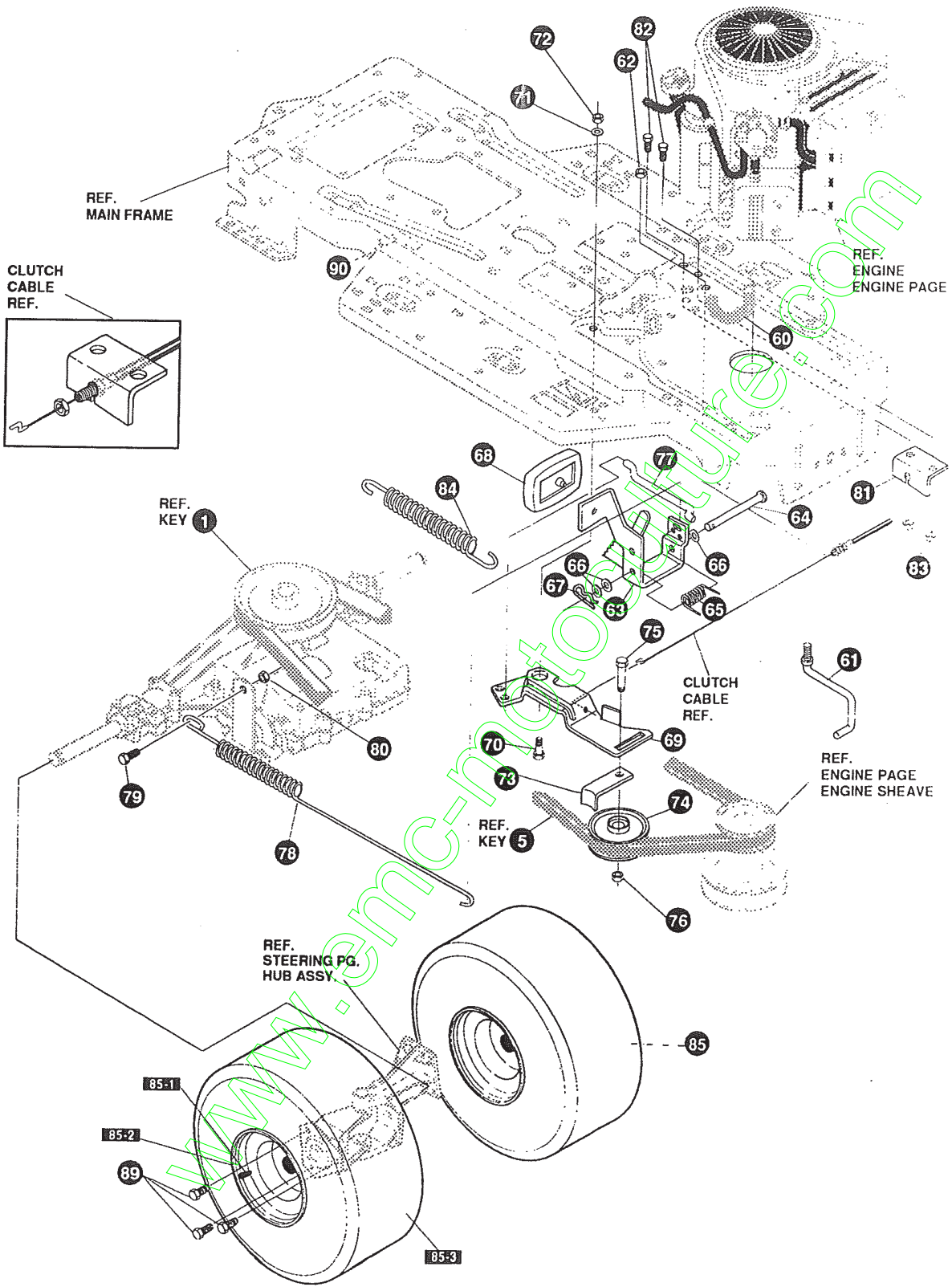
**NOTE: ALWAYS USE ORIGINAL EQUIPMENT PARTS.**  
Use of service/replacement parts other than original equipment parts may void your warranty.

**ALL UNNUMBERED ITEMS ARE INTERCHANGEABLE WITH OPPOSITE SIDE**

327805 D

KEY#	PART#	DESCRIPTION	QTY
1	*	TRANSAXLE, FOOTE, 6SP, 4WS, LF .....	1
2	303109	PULLEY, 6.6 OD, V4L, T/A .....	1
3	50795	KEY, HI-PRO, 606 .75DIA X .187 WD .....	1
4	22053	RING, RETEX .58 X .035 TRU 5100-62 .....	1
5	314120	BELT, V 4L, 87.25, 4WS, LF .....	1
6	180091	SCREW, 5/16-18 X 2.50 HHC .....	4
7	120393	WASHER, FLAT .344 X .69 X .065 .....	8
8	1498	NUT, 5/16-18 REGHEXCTRLK .....	4
9	323739	BRACKET, STABILIZER, BLACK .....	1
10	35498	SCREW, 5/16-18 X .75 WAHTAP .....	1
11	120638	WASHER, HVSP TLK .328 X .60 X .09 .....	1
12	180079	SCREW, 5/16-18 X 1.00 HHC .....	1
13	120393	WASHER, FLAT .344 X .69 X .065 .....	1
14	1498	NUT, 5/16-18 REGHEXCTRLK .....	1
15	50947	SCREW, 3/8-16 X 1.25 WAHTAP .....	1
16	180077	SCREW, 5/16-18 X .75 HHC .....	1
17	138538	WASHER, REGINTLK .320 X .61 X .03 .....	1
18	1498	NUT, 5/16-18 REGHEXCTRLK .....	1
19	319209	LEVER, SHIFT-LOWER, SHIFT N GO, LF .....	1
20	310347-853	CLIP- SHIFT LEVER, .625 ROD .....	1
21	180077	SCREW, 5/16-18 X .75 HHC .....	1
22	996416	WASHER, FLAT .391 X 1.00 X .125 .....	1
23	1498	NUT, 5/16-18 REGHEXCTRLK .....	1
24	310347-853	CLIP- SHIFT LEVER, .625 ROD .....	1
25	57259	GUIDE, BELT 5/16-18 THD .....	1
26	996416	WASHER, FLAT .391 X 1.00 X .125 .....	1
27	1498	NUT, 5/16-18 REGHEXCTRLK .....	1
28	320383	UPPER SHIFT LEVER ASSEMBLY .....	1
29	321092	BOLT, .380 X .500 HSH 1/4-20 .....	1
30	50352	NUT, 1/4-20 WDFLLK, TOPLOCK .....	1
31	137185	PIN, COTTER .125 DIA X 1.00 LONG .....	1
32	120377	NUT, 3/8-16 REGHX .....	1
33	306689	HANDLE, 3/8-16 MOLDED BLACK .....	1
34	316557	LINK, TIE ROD SHIFT, 7.477C/L .....	1
35	180124	SCREW, 3/8-16 X 1.25 HHC .....	1
36	120382	WASHER, REGSPTLK .393 X .68 X .10 .....	1
37	1499	NUT, 3/8-16 REGHXCTRLK .....	1
38	309637	BRACKET, SHIFT, 5SP, SF .....	1
39	180124	SCREW, 3/8-16 X 1.25 HHC .....	1
40	120394	WASHER, FLAT .406 X .81 X .065 .....	2
41	1499	NUT, 3/8-16 REGHXCTRLK .....	1
42	57157	WASHER, .750 X .250 SP-TRANSAXLE .....	1
43	56255	SCREW, 1/4-28 X .75 NYLHHC .....	1
44	319806-853	QUADRANT, SHIFT, FOOTE, F4360-6HD .....	1
45	305850	SCREW, 1/4-20 X .50 PHPNTAP .....	4
46	1502	NUT, 1/4-20 REGHEXCTRLK .....	4
47	321517	BRACKET, FRAME SHIFT .....	1
48	180022	SCREW, 1/4-20 X 1.00 HHC .....	1
49	57038	BOLT, 1/4-20 X .63 CARRLN .....	1
50	120394	WASHER, FLAT .406 X .81 X .065 .....	2
50	316080	SPACER .328 X .50 X .38 .....	1
51	1502	NUT, 1/4-20 REGHEXCTRLK .....	2
52	120392	WASHER, FLAT .281 X .63 X .065 .....	1
53	319803	CABLE, SHIFT N GO .....	1
54	57444	TIE, CABLE BLACK NYLON, 5.62 LONG .....	1
55	314837	SPRING, MEMORY .....	1

\* CONTACT YOUR NEAREST TRANSAXLE DEALER FOR PARTS & SERVICE



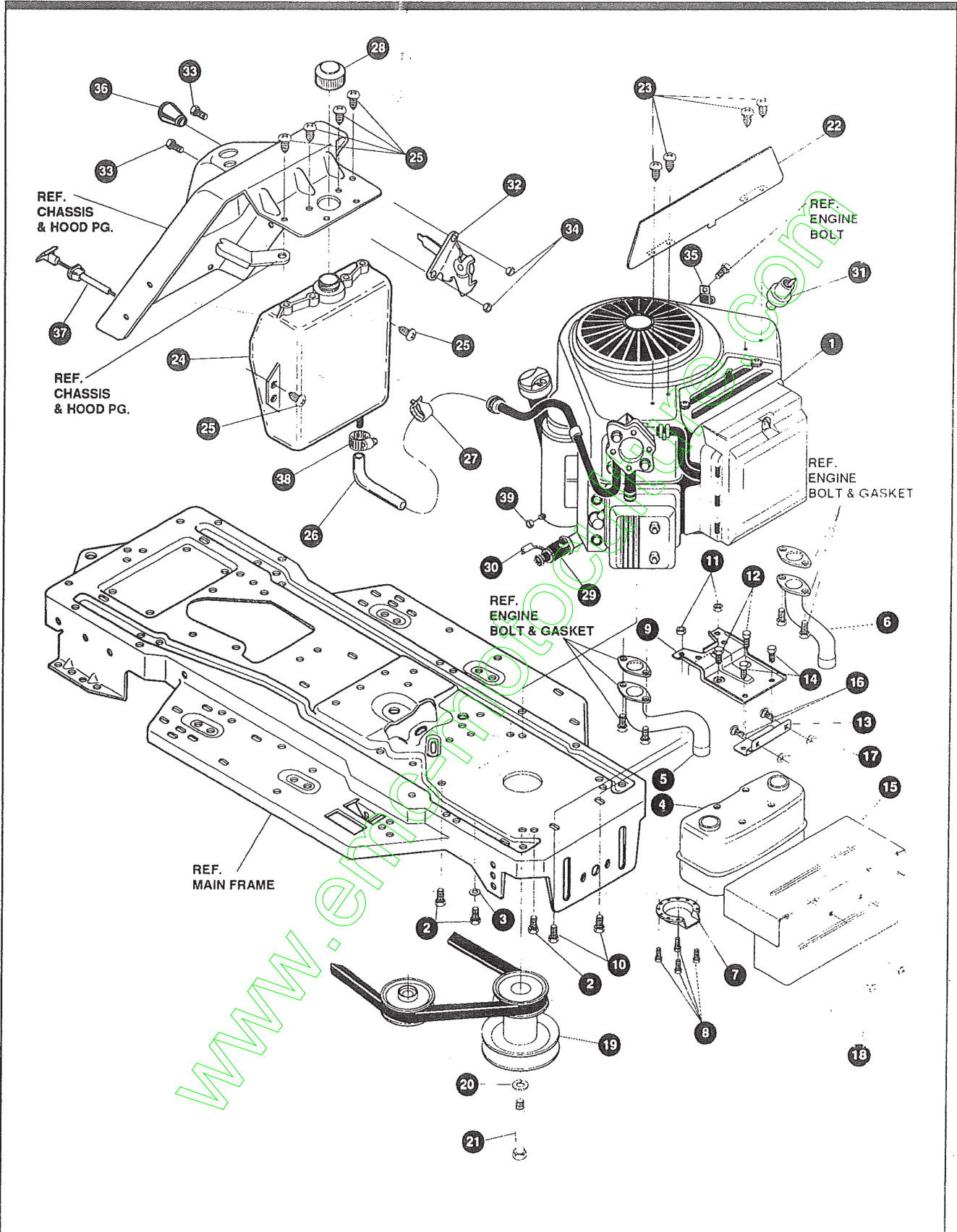
**NOTE: ALWAYS USE ORIGINAL EQUIPMENT PARTS.**  
 Use of service/replacement parts other than original equipment parts may void your warranty.

**ALL UNNUMBERED ITEMS ARE INTERCHANGEABLE WITH OPPOSITE SIDE**

327805 D

KEY#	PART#	DESCRIPTION	QTY
60	321514	SPRING, DRAG LINK BIAS .....	1
61	304016	GUIDE, BELT RH .....	1
62	1498	NUT, 5/16-18 REGHEXCTRLK .....	1
63	325942	PEDAL ASSEMBLY, BRAKE/CLUTCH, LF .....	1
64	319675	PIN, CLEVIS .500 D X 4.53 LONG .....	1
65	57847	SPRING, BRAKE PEDAL .....	1
66	2968	WASHER, FLAT .504 X .75 X .059 .....	3
67	56180	PIN, HAIR .091 DIA X 1.62 LONG .....	1
68	48160	PAD, CLUTCH BRAKE, W/PRINTING .....	1
69	320381	ARM, IDLER TRACTION, SOG, LF .....	1
70	329989	BOLT, .625 X .135 HSH, 5/16-18 .....	1
71	45602	WASHER, FLAT .333 X .87 X .119 .....	1
72	1498	NUT, 5/16-18 REGHEXCTRLK .....	1
73	39659	RETAINER, BELT .....	1
74	35374	PULLEY, IDLER, V4L, 3.06 X .62 .....	1
75	45892	BOLT, 3/8-16 X 1.50 CARRSN .....	1
76	1499	NUT, 3/8-16 REGHEXCTRLK .....	1
77	57204	ROD, CLUTCH 3.92" .....	1
78	325937	SPRING, BRAKE, 28.80, 930, 4360 .....	1
79	326131	BOLT, .495 X .31 HSH, 5/16-18 .....	1
80	1498	NUT, 5/16-18 REGHEXCTRLK .....	1
81	321517	BRACKET, FRAME SHIFT .....	1
82	180020	SCREW, 1/4-20 X .75 HHC .....	1
83	1502	NUT, 1/4-20 REGHEXCTRLK .....	2
84	322608	SPRING, CLUTCH .....	1
85	*	TIRE & RIM, 20 X 10.00-8 .....	2
85-1	24167	VALVE STEM	
85-2	316667	RIM, WHEEL	
85-3	TIRE	REFER TO TIRE TREAD PAGE	
89	181683	SCREW, 1/2-20 X .50 HHC .....	6
90	313039	DECAL, 4WS PATENT NO. 5048853 .....	1

\* ORDER INDIVIDUAL PARTS - ASSEMBLY NOT AVAILABLE



**NOTE: ALWAYS USE ORIGINAL EQUIPMENT PARTS.**  
 Use of service/replacement parts other than original equipment parts may void your warranty.

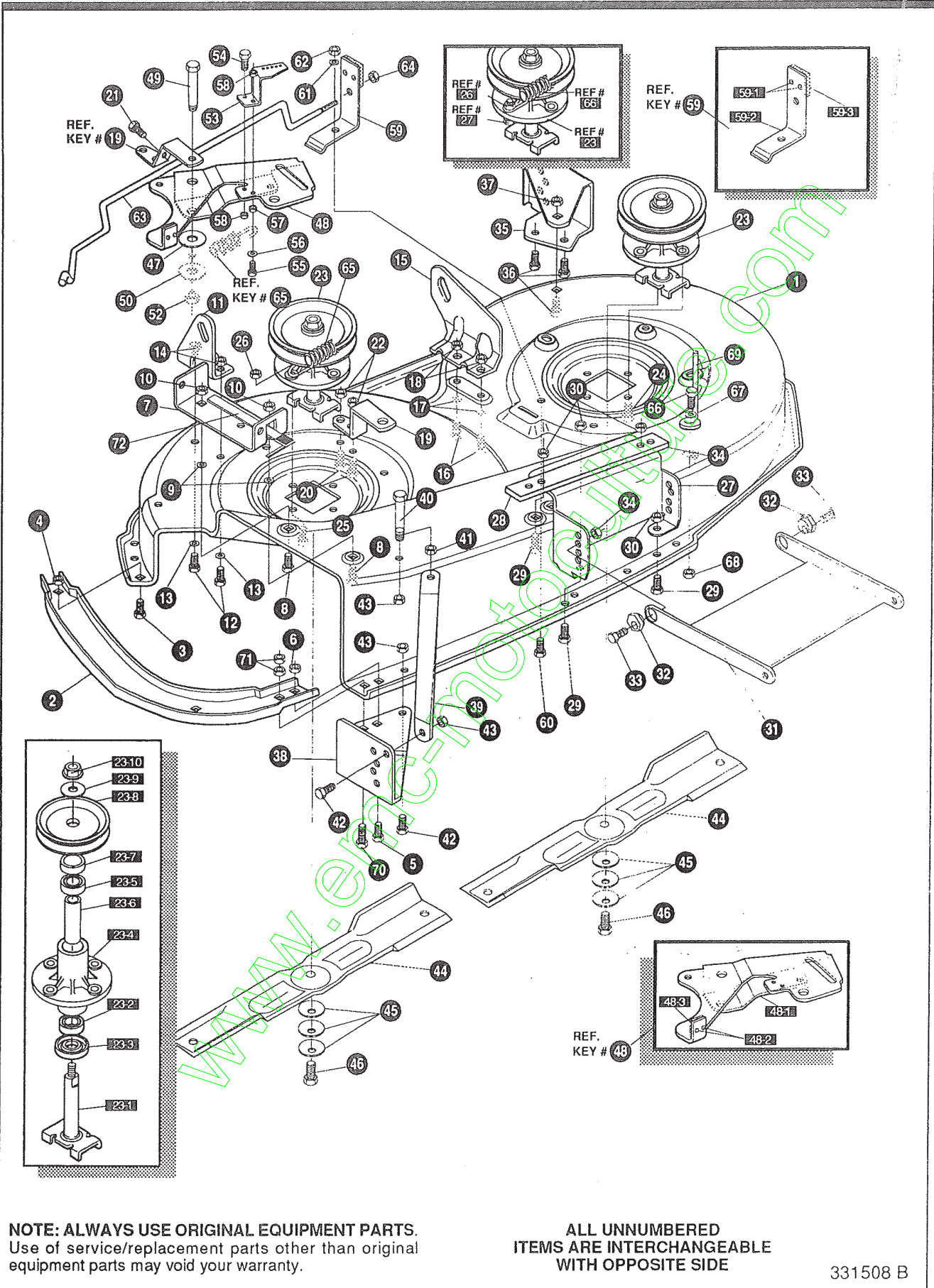
**ALL UNNUMBERED ITEMS ARE INTERCHANGEABLE WITH OPPOSITE SIDE**

326254 E



KEY#	PART#	DESCRIPTION	QTY
1	*	ENGINE, 14-16HP, VANGUARD .....	1
2	50947	SCREW, 3/8-16 X 1.25 WAHHTAP .....	4
3	138489	WASHER, EXLK .384 X .69 X .04 .....	1
4	305553	MUFFLER, 14/18HP, TWIN NELSON, 22785 .....	1
5	305554	EXHAUST TUBE, 15HP, RH, B&S, VANG .....	1
6	305555	EXHAUST TUBE, 15HP, LH, B&S, VANG .....	1
7	56472	DEFLECTOR SIDE OUT (BS222573) .....	1
8	35287	SCREW, #8-32X .38 HHWTAP .....	4
9	304709-853	BRACKET, MUFFLER .....	1
10	56030	SCREW, 5/16-18 X .75 WDFLLK .....	2
11	55273	NUT, 5/16-18 WDFLLKLRG, WHIZ .....	2
12	995346	SCREW, 1/4-20 X .50 WAHHTAP .....	2
13	9796	BRACKET, TRANSAXLE .....	1
14	44811	SCREW, 1/4-20 X .75 WAHHTAP .....	2
15	320922-853	SHIELD, MUFFLER HEAT TWIN .....	1
16	57072	BOLT, 5/16-18 X .63 CARRLN .....	2
17	309436	PUSHNUT, 5/16 BOLT RETAINER .....	2
18	55273	NUT, 5/16-18 WDFLLKLRG, WHIZ .....	2
19	328029	PULLEY, ENGINE 4.40OFF/5.00D/3.00D .....	1
20	120383	WASHER, REGSPTLK .459 X .78 X .12 .....	1
21	428644	SCREW, 7/16-20 X 5.00 HHC .....	1
22	312728-853	HEAT SHIELD, VANG, (MF. HOOD) .....	1
23	57366	SCREW, 10-16 X .50 DRILLTITE .....	4
24	314992	TANK, FUEL 2 GALLON, CLEAR .....	1
25	49050	SCREW, 1/4-10 X .75 PHPNTAP .....	6
26	48049	TUBING, 25 X .50 X BULK GAS LINE .....	10.0"
27	47345	CLAMP, HOSE SCREW TYPE .....	1
28	46704	CAP, GAS 1-1/2-7 THD, BLACK .....	1
29	325547	OIL DRAIN VALVE ASSEMBLY .....	1
30	327422	CAP, OIL DRAIN VALVE ASSEMBLY, YELLOW .....	1
31	314797	OIL SENSOR, B&S, TWIN CYLINDER .....	1
32	310280	CONTROL, THROTTLE, 33.5 LONG, B&S, VANG .....	1
33	320553	SCREW, 10-24 X .63 PHPNMA CRSS .....	2
34	308459	NUT, #10-24 HXHDNYLK .....	2
35	57569	RETAINER, .31 ID X .62 X .03 WIRE .....	1
36	50607	KNOB, ROUND THROTTLE, BLACK .....	1
37	310279	CONTROL, CHOKE, 35.25 LONG, PANTK .05 .....	1
38	47345	CLAMP, HOSE SCREW TYPE .....	1
39	124818	NUT, 1/4-20 REGHXJAM .....	1

\* SEE ENGINE MANUAL

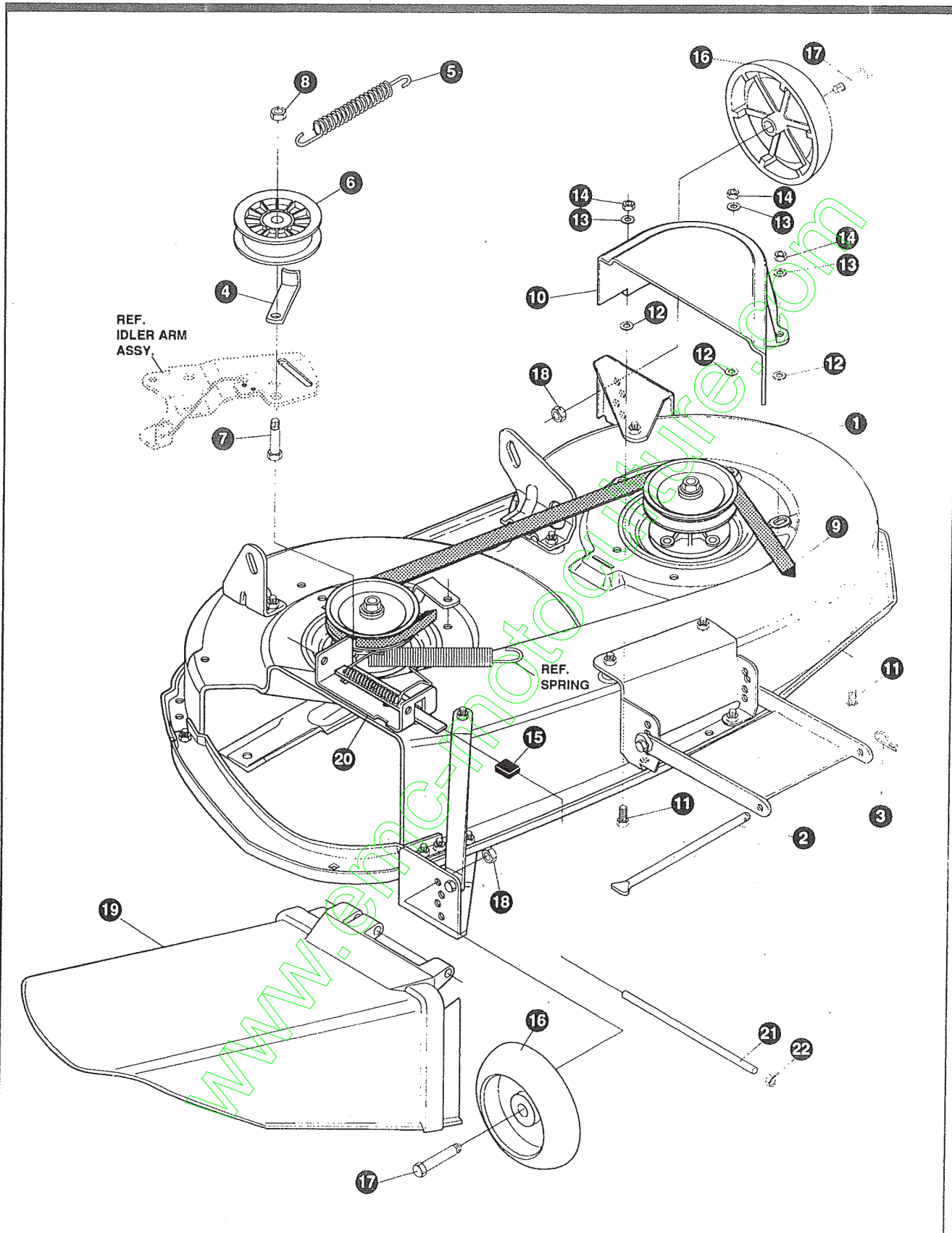


**NOTE: ALWAYS USE ORIGINAL EQUIPMENT PARTS.**  
 Use of service/replacement parts other than original equipment parts may void your warranty.

**ALL UNNUMBERED ITEMS ARE INTERCHANGEABLE WITH OPPOSITE SIDE**

331508 B

KEY#	PART#	DESCRIPTION	QTY
1	325116	43" DECK KIT .....	1
2	326480	TOE GUARD - MULCHER .....	1
3	180077	SCREW, 5/16-18 X .75 HHC .....	1
4	1498	NUT, 5/16-18 REGHEXCTRLK .....	1
5	180077	SCREW, 5/16-18 X .75 HHC .....	1
6	1498	NUT, 5/16-18 REGHEXCTRLK .....	1
7	317017	BRACKET, CHUTE MOUNT, BLACK .....	1
8	180077	SCREW, 5/16-18 X .75 HHC .....	2
9	120393	WASHER, FLAT .344 X .69 X .065 .....	2
10	1498	NUT, 5/16-18 REGHEXCTRLK .....	2
11	313929	LIFT BRACKET, REAR, RH, BLACK .....	1
12	180077	SCREW, 5/16-18 X .75 HHC .....	2
13	120393	WASHER, FLAT .344 X .69 X .065 .....	2
14	1498	NUT, 5/16-18 REGHEXCTRLK .....	2
15	310667	BRACKET, DECK, LIFT, REAR, LH, BLACK .....	1
16	180077	SCREW, 5/16-18 X .75 HHC .....	2
17	120393	WASHER, FLAT .344 X .69 X .065 .....	2
18	1498	NUT, 5/16-18 REGHEXCTRLK .....	2
19	326893	BRACE, IDLER SUPPORT, 40", 43" .....	1
20	180077	SCREW, 5/16-18 X .75 HHC .....	2
21	308231	SCREW, 1/4-20 X 1.25 HHWATAP .....	1
22	44108	NUT, 5/16-18 HWDFLCTRLK .....	2
23	56424	QUILL ASSEMBLY, 36/39/40/43 .....	2
23-1	56425	SHAFT/SADDLE 36" .....	1
23-2	49562	BEARING, BALL 6203-2AA-C3 ARMORED .....	1
23-3	50616	DUST SHIELD .....	1
23-4	55547	QUILL CASTING (1046) .....	1
23-5	49562	BEARING, BALL 6203-2AA-C3 ARMORED .....	1
23-6	50818	SPACER, SLEEVE .669 X .88 X 3.797 .....	1
23-7	51449	SPACER, SLEEVE .672 X .93 X 4.38 .....	1
23-8	313898	PULLEY ASSEMBLY .....	1
23-9	56365	WASHER, SPECIAL QUILL .....	1
23-10	1282	NUT, 7/16-20 WDFLLK .....	1
24	35498	SCREW, 5/16-18 X .75 WAHHTAP .....	7
25	300345	SCREW, 5/16-18 X 1.38 WAHHTAP .....	1
26	1498	NUT, 5/16-18 REGHEXCTRLK .....	1
27	317040	BRACKET FRONT, BLACK .....	1
28	328155	PLATE-MOUNTING .....	1
29	180077	SCREW, 5/16-18 X .75 HHC .....	4
30	1498	NUT, 5/16-18 REGHEXCTRLK .....	4
31	58305	BRACKET, LINK, DECK, FRONT .....	1
32	58247	NUT, ADJUST .....	2
33	180079	SCREW, 5/16-18 X 1.00 HHC .....	2
34	1498	NUT, 5/16-18 REGHEXCTRLK .....	2
35	317041	BRACKET, GAGE WHEEL, LH, BLACK .....	1
36	180077	SCREW, 5/16-18 X .75 HHC .....	3
37	1498	NUT, 5/16-18 REGHEXCTRLK .....	3
38	322464	BRACKET, GAGE WHEEL, RH, FRONT .....	1
39	314282	BRACKET, STABILIZER .....	1
40	311104	SCREW, 5/16-18 X 5.00 HHC .....	1
41	271184	NUT, 5/16-18 HEXKEPS .....	1
42	180077	SCREW, 5/16-18 X .75 HHC .....	2
43	1498	NUT, 5/16-18 REGHEXCTRLK .....	3
44	326961	BLADE, 43", BLACK .....	2
45	2483	WASHER, 3/8 ID X 1.25 D X .07 BELLVIL .....	6
46	39573	SCREW, 3/8-24 X 1.00 NYLHHC .....	2
47	996307	WASHER, FLAT .391 X 1.00 X .209 .....	1
48	320576	IDLER ARM ASSEMBLY .....	1
48-1	322116	ARM, IDLER, 40/43" DECK .....	1
48-2	41601	RIVET, OVSET .187 DIA X .50 LONG .....	2
48-3	306973	BRAKE PAD - HARD-NF343 (X-31) .....	1
49	304420	BOLT, .500 X 2.15 HSH .....	1
50	996416	WASHER, FLAT .391 X 1.00 X .125 .....	1
52	45171	NUT, 3/8-16 HWDFL WHIZ-LOCK .....	1
53	326249	BRACKET, EXTENSION IDLER .....	1
54	180077	SCREW, 5/16-18 X .75 HHC .....	1
55	180083	SCREW, 5/16-18 X 1.50 HHC .....	1
56	446363	WASHER, FLAT .375 X .88 X .082 .....	1
57	271184	NUT, 5/16-18 HEXKEPS .....	1
58	1498	NUT, 5/16-18 REGHEXCTRLK .....	2
59	321828	BLADE BRAKE ASSEMBLY .....	1
59-1	135624	RIVET, TRSET .185 DIA X .41 LONG .....	2
59-2	304119	BRAKE ARM .....	1
59-3	306973	BRAKE PAD - HARD-NF343 (X-31) .....	1
60	180077	SCREW, 5/16-18 X .75 HHC .....	1
61	120393	WASHER, FLAT .344 X .69 X .065 .....	1
62	1498	NUT, 5/16-18 REGHEXCTRLK .....	1
63	315304	ROD, BRAKE .....	1
64	1502	NUT, 1/4-20 REGHEXCTRLK .....	1
65	35410	SPRING .071 X .62 X 4.37 .....	1
66	180079	SCREW, 5/16-18 X 1.00 HHC .....	1
67	120393	WASHER, FLAT .344 X .69 X .065 .....	1
68	1498	NUT, 5/16-18 REGHEXCTRLK .....	1
69	325965	BELT GUIDE, 43" DECK, UPSTOP .....	1
70	12685	SCREW, 5/16-18 X 1.50 HHCFT .....	1
71	1498	NUT, 5/16-18 REGHEXCTRLK .....	2
72	322320	LEVER ASSEMBLY (SHORT) .....	1

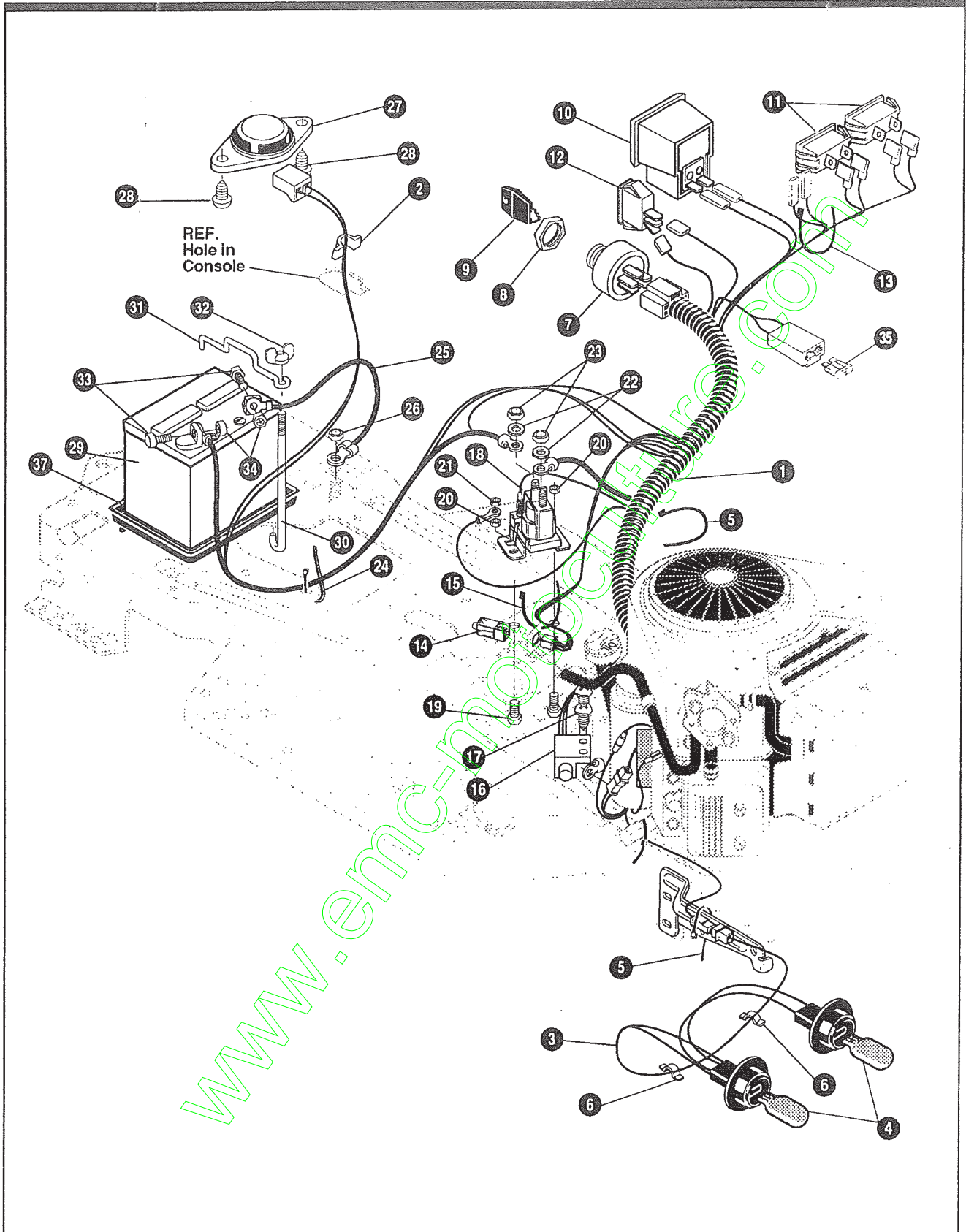


**NOTE: ALWAYS USE ORIGINAL EQUIPMENT PARTS.**  
 Use of service/replacement parts other than original equipment parts may void your warranty.

**ALL UNNUMBERED ITEMS ARE INTERCHANGEABLE WITH OPPOSITE SIDE**

331509 A

KEY#	PART#	DESCRIPTION	QTY
1	329036	DECK, 43" MOWER, 2-WH, DOM, AIR	1
2	58306	ROD, DECK HITCH	1
3	8260	PIN, HAIR .091 DIA X 1.66 LONG	1
4	1346	RETAINER, BELT	1
5	314107	SPRING, TENSION 5.00 LONG, 17 LB/IN	1
6	310326	PULLEY, IDLER BFF 4.00 WIDE FLANGE	1
7	126416	BOLT, 3/8-16 X 1.75 CARRLN	1
8	45171	NUT, 3/8-16 HWDFL WHIZ-LOCK	1
9	314108	BELT, V 5L 86.00 KEVLAR	1
10	333073	GUARD, BELT, LH, PLASTIC	1
11	57101	BOLT, 5/16-18 X .75 CARRSN	3
12	309436	PUSHNUT, 5/16 BOLT RETAINER	3
13	120393	WASHER, FLAT, 3/4 X .69 X .065	3
14	1498	NUT, 5/16-18 REGHEXCTRLK	3
15	42348	GRIP-LEVER, GRASS COLLECTOR	1
16	302611	GAUGE WHEEL, EURO 6.00 OD X 1.38 WD	2
17	23763	BOLT, .500 X 1.390 HSH, 3/8-16	2
18	1499	NUT, 3/8-16 REGHXCTRLK	2
19	304422	CHUTE DEFLECTOR, 40", 42" & 43"	1
20	314975	SPRING, TORSION, CHUTE DEFLECTOR	1
21	304424	ROD, PIVOT DECK .312 D X 7.25	1
22	3535	NUT, PUSH ON CAP .312 OD	1



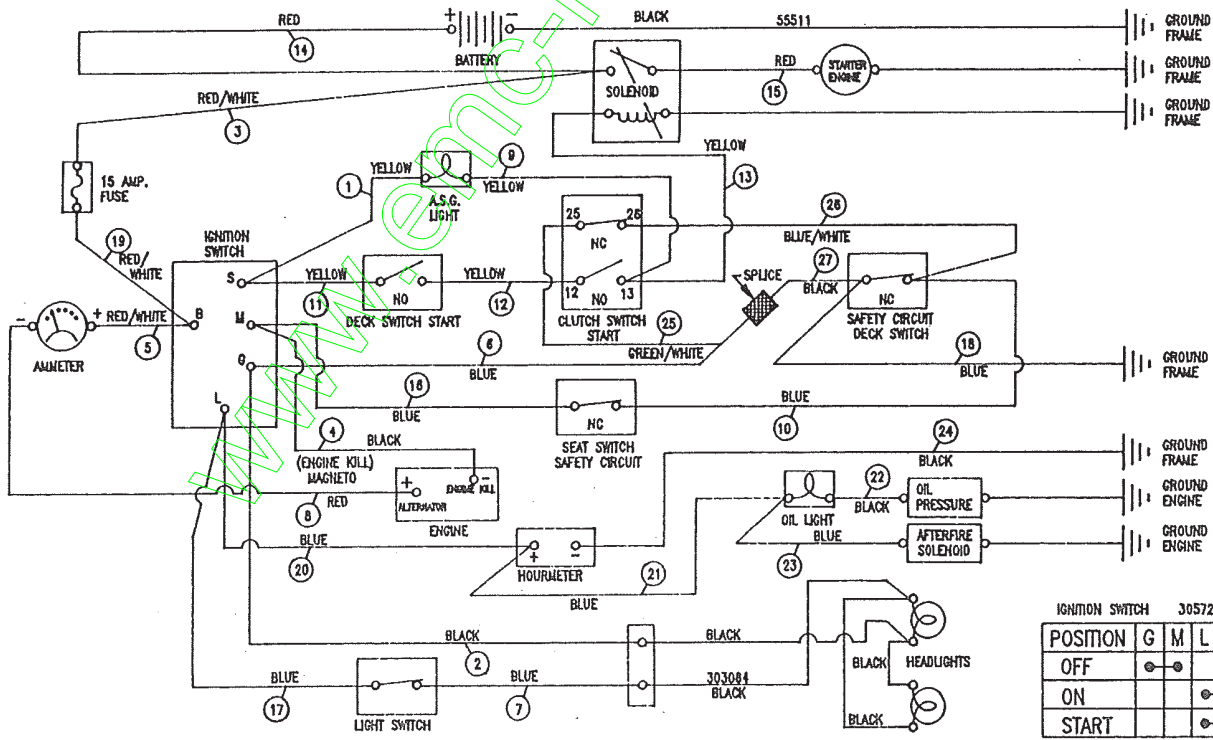
**NOTE: ALWAYS USE ORIGINAL EQUIPMENT PARTS.**  
 Use of service/replacement parts other than original equipment parts may void your warranty.

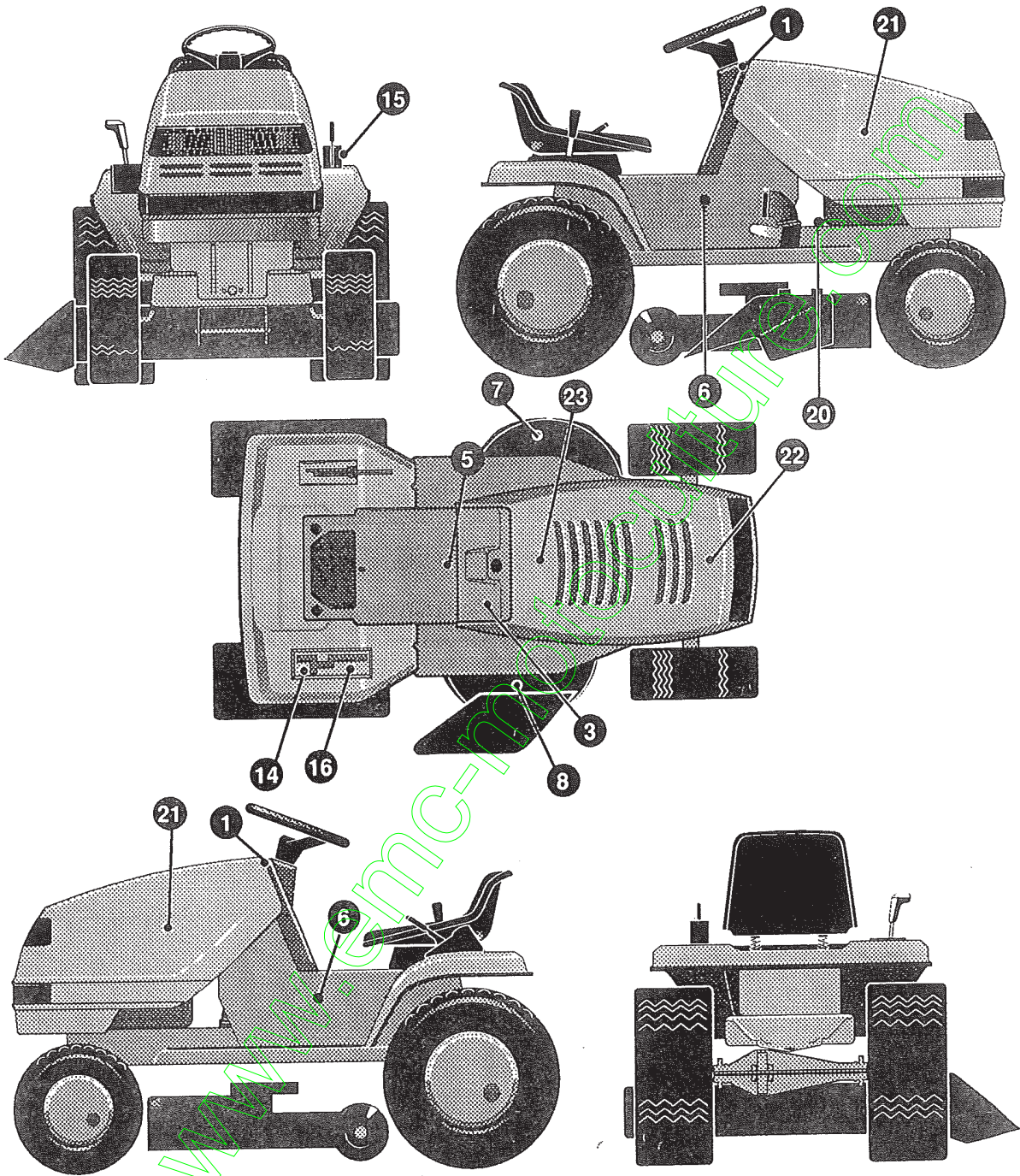
**ALL UNNUMBERED ITEMS ARE INTERCHANGEABLE WITH OPPOSITE SIDE**

325510 D

KEY#	PART#	DESCRIPTION	QTY
1	320393	WIRE HARNESS, 14-16HP, B&S, VAN, WRAPPED	1
2	41482	PRESS CLIP, 1.380 LONG .255 ID	1
3	303064	ASSEMBLY, LIGHT WIRE-1/4 TURN	1
4	52572	BULB, HEADLAMP	2
5	57444	TIE, CABLE BLACK NYLON, 5.62 LONG	2
6	41482	PRESS CLIP, 1.380 LONG .255 ID	2
7	327355	SWITCH-IGNITION (AFTER FIRE) 3 POSITION	1
8	327352	NUT, 5/8-8ACME DELTA FOR BOOT	1
9	327350	KEY, IGNITION	2
10	300133	AMMETER	1
11	300255	LIGHT, INDICATOR, PANEL MOUNT	2
12	300334	LIGHT SWITCH, ON/OFF PANEL MOUNT	1
13	57444	TIE, CABLE BLACK NYLON, 5.62 LONG	1
14	320082	SWITCH, DOUBLE POLE NO/NC GRAY	1
15	57444	TIE, CABLE BLACK NYLON, 5.62 LONG	1
16	57476	SWITCH, SCREW MOUNT, DP, NC, NO, BLACK	1
17	57220	SCREW, #12 X .50 PHPNHTAP, BLACK	2
18	53716	SOLENOID	1
19	187745	SCREW, 1/4-20 X .75 HXSEMMA	2
20	1502	NUT, 1/4-20 REGHEXCTRLK	2
21	271172	NUT, 1/4-20 REGHEXKEPS	1
22	138485	WASHER, EXLK .320 X .61 X .03	2
23	120368	NUT, 5/16-24 REGHEX	2
24	57444	TIE, CABLE BLACK NYLON, 5.62 LONG	1
25	55511	WIRE, GROUND, 12.5"	1
26	271184	NUT, 5/16-18 HEXKEPS	1
27	57547	SWITCH, SEAT	1
28	160505	SCREW, 1/4-20 X .38 PHPNHMA	2
29	92693	BATTERY, 12V	1
30	57551	ROD, BATTERY	1
31	57552	ROD, BATTERY, TOP	1
32	325232	NUT, WING 1/4-20, NYLON	1
33	180020	SCREW, 1/4-20 X .75 HHC	2
34	271172	NUT, 1/4-20 REGHEXKEPS	2
37	91895	TRAY - BATTERY	1

SCHEMATIC DRAWING



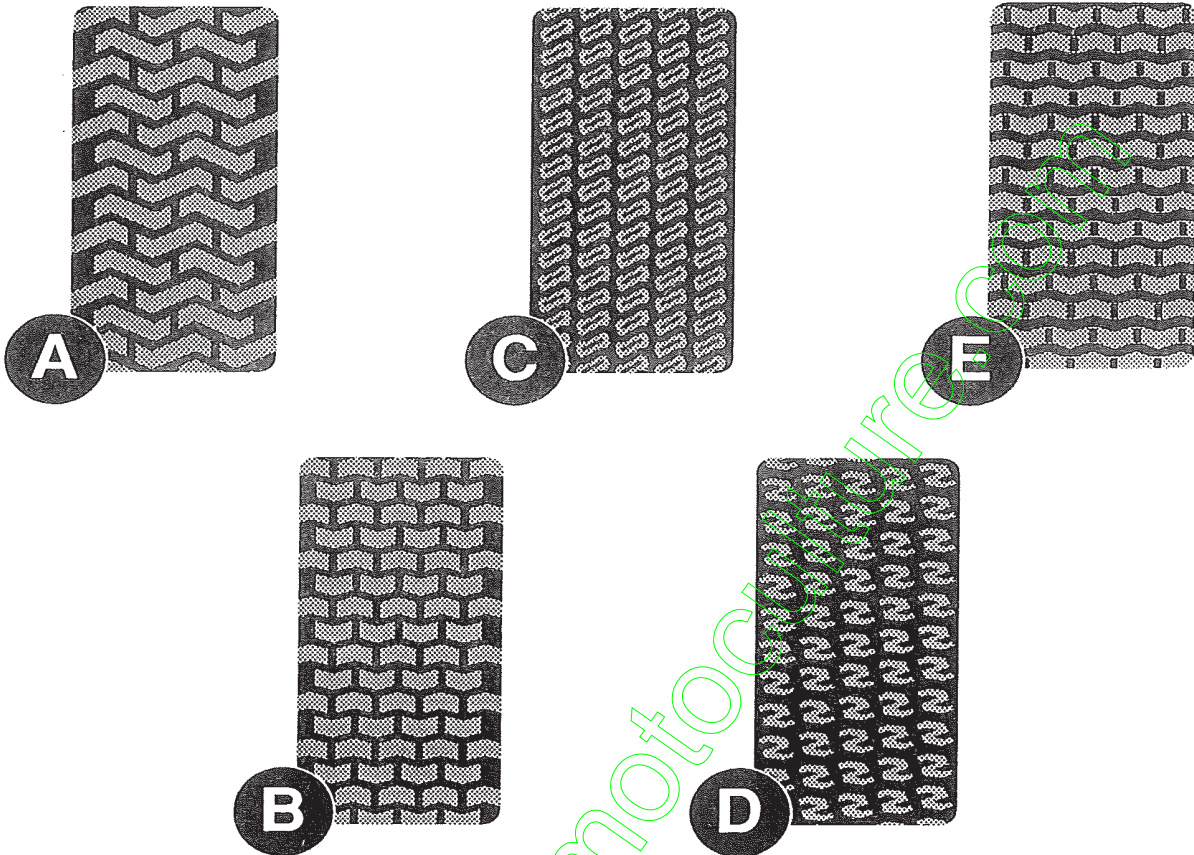




KEY#	PART#	DESCRIPTION	QTY
1	313208	DECAL, DASH, WEAR STRIP, RED .....	2
3	320680	DECAL, LF, DASH, OK/OIL LSW/CH EX .....	1
5	402689	DECAL, CONSOLE, SYMBOLIC, CAUTION .....	1
6	316594	NAMEPLATE, 14/43, CHROME .....	2
7	402700	DECAL, CAUTION, DECK, LH .....	1
8	402701	DECAL, CAUTION, DECK, RH .....	1
14	322169	DECAL, FENDER, 6 SPEED, SOG .....	1
15	402214	DECAL, HEIGHT ADJUST .....	1
20	402702	DECAL, BRAKE/CLUTCH .....	1
21	305603	PAD, 18 X 6 FOAM HOOD .....	2
22	307277	PAD, 12 X 4 FOAM HOOD .....	1
23	305602	FOAM, HOOD 4 X 15 .....	1

www.emc-machinery.com

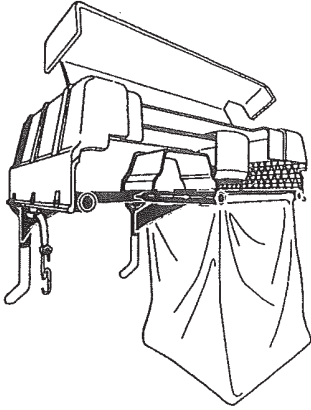
# TREAD PATTERNS



TIRE SIZE	"A"	"B"	"C"	"D"	"E"
11 X 4.00 - 5	42295	319679			
13 X 5.00 - 6	41060	319680			
15 X 6.00 - 6	39830	316702	301140	313952	
16 X 4.80 - 8		305035			
16 X 6.50 - 8	41081	319682		314539	
18 X 6.50 - 8		42091			
18 X 8.50 - 8	319683	317400			
18 X 9.50 - 8	41106	316701		313950	
20 X 8.00 - 8	319685	319684	57164	314584	331606
20 X 10.00 - 8	58276	319686		313654	
20 X 10.00 - 10	55893	319687			
23 X 9.50 - 12	53655	319690	319689	314370	

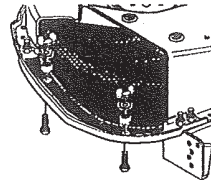
Contact the dealer where your tractor was purchased for the available accessories. If you are unable to contact the dealer, write to the address on the warranty page of your Operator's manual.

**LARGE LAWN TRACTOR**

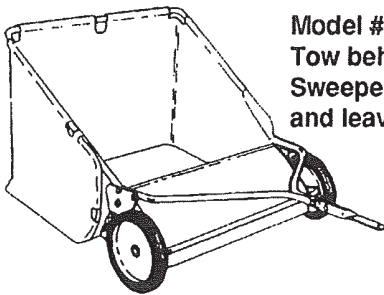
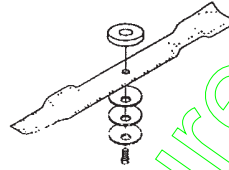


Model # 5708-34  
Grass Collector for  
40, 42, 43" decks

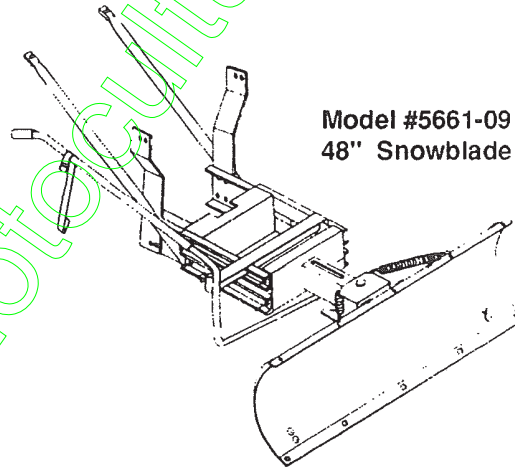
For heavy duty grass  
collection order Model  
#5709-10 Air Assist



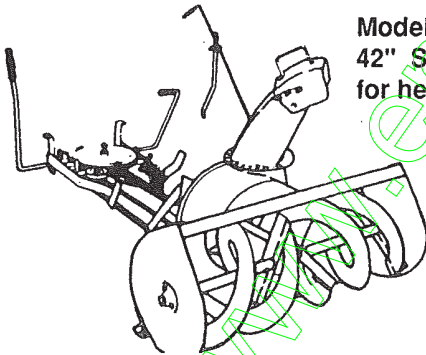
5717-00  
Mulching Kit (42/43" Deck)  
5716-00  
Mulching Kit (40" Deck)



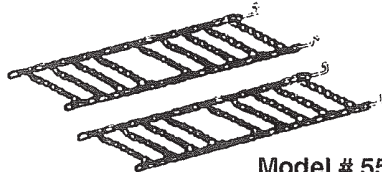
Model # 5648-16  
Tow behind Lawn  
Sweeper for grass  
and leaves



Model #5661-09  
48" Snowblade



Model #5705-06  
42" Snowthrower  
for heavy snowfall



Model # 5585-00  
Tire Chains - 20" x 8.0" tires  
Model # 5706-00  
Tire Chains - 20" x 10.0" tires

**OTHER ACCESSORIES**

Model	Description
5672-01	Wheel Weights - Front - 1 pr. w/mtg. hdw. - Fits 15" tires
5673-02	Wheel Weights - Rear - 1 pr. w/mtg. hdw. - Fits 18" & 20" tires
309070	40" High Lift Blade for Bagging or Side Discharge (Requires 2)
330277	40" Mulching Blade (Requires 2)
316608	43" High Lift Blade for Bagging or Side Discharge (Requires 2)
325762	43" Mulching Blade (Requires 2)

[www.emc-motoculture.com](http://www.emc-motoculture.com)