

NOMA PERFORMANCE

Powerful - Easy to Drive - Cuts Faster - Lawn Looks Better

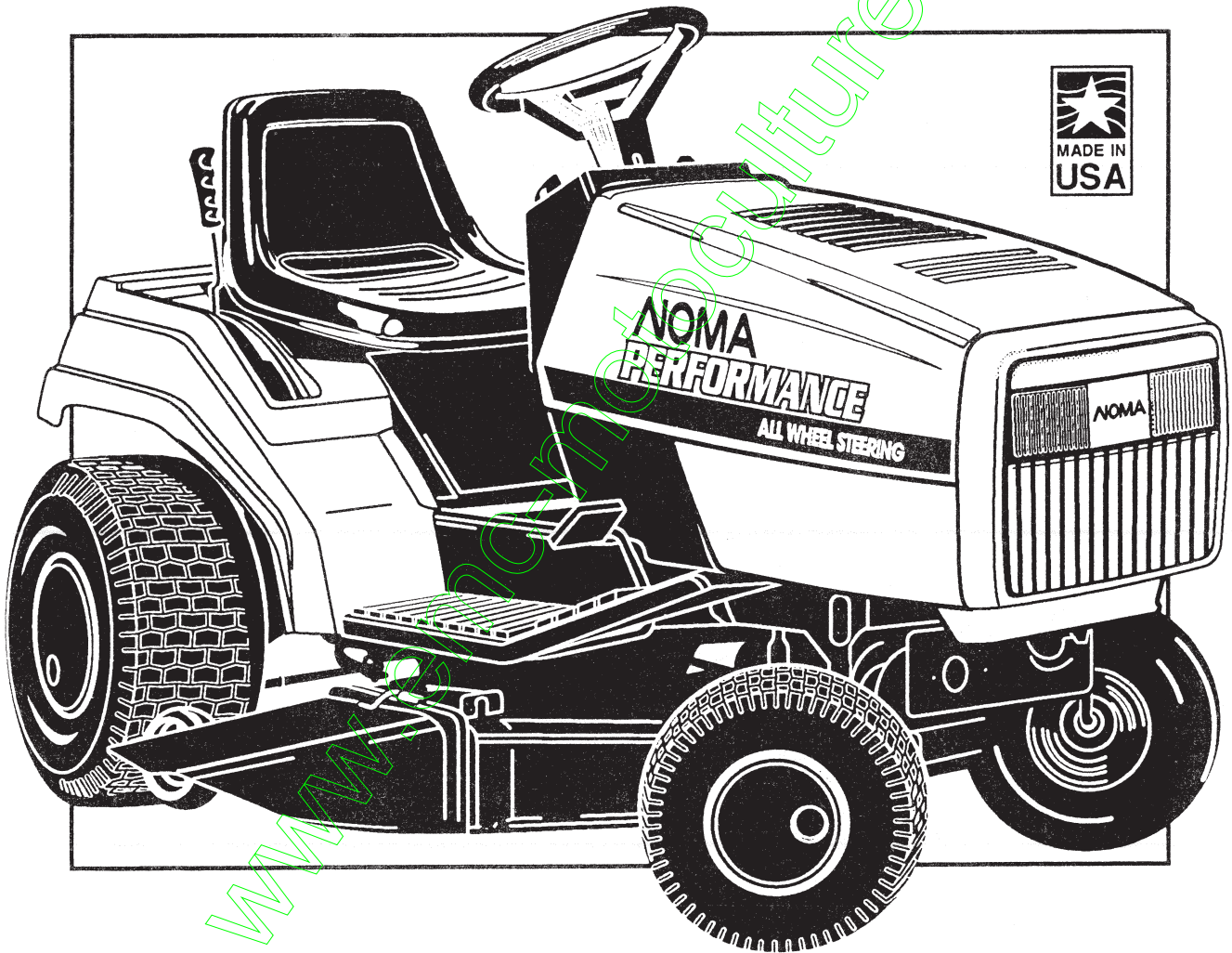
333491A

1/18/94

Price \$5.00

ALL-WHEEL-STEERING LAWN TRACTOR

Model E4620-020



• Safety Rules • Repair Parts • Warranty

THESE INSTRUCTIONS ARE FOR YOUR PROTECTION. PLEASE READ THEM CAREFULLY.

IMPORTANT

THIS CUTTING MACHINE IS CAPABLE OF AMPUTATING HANDS AND FEET AND THROWING OBJECTS. FAILURE TO OBSERVE THE FOLLOWING SAFETY INSTRUCTIONS COULD RESULT IN SERIOUS INJURY OR DEATH.

I. GENERAL OPERATION:

- Know controls and how to stop quickly.
- Read, understand, and follow all instructions in the manual and on the machine before starting.
- Only allow responsible adults, who are familiar with instructions, to operate the machine.
- Wear safety glasses or eye shields when assembling or operating the machine.
- Do not operate machine when barefooted. Always wear substantial footwear, preferably steel-toed shoes.
- Do not wear loose fitting clothing that could get caught in moving parts.
- Clear the area of objects such as rocks, toys, wire, etc., which could be picked up and thrown by the blade(s).
- Be sure the area is clear of other people before mowing. Stop machine if anyone enters the area.
- Never carry passengers.
- Do not mow in reverse unless absolutely necessary. Always look down and behind before and while backing.
- Be aware of the mower discharge direction and do not point it at anyone. Do not operate the mower without either the entire grass catcher or the guard in place.
- Slow down before turning.
- Never leave a running machine unattended. Always turn off blades, set parking brake, stop engine, and remove keys before dismounting.
- Turn off blade(s) when not mowing.
- Stop engine before removing grass catcher or unclogging chute.
- Mow only in daylight or good artificial light.
- Do not operate the machine while under the influence of alcohol or drugs.
- Watch for traffic when operating near or crossing roadways.
- Use care when mowing around a fixed object to prevent the blade(s) from striking it. Never deliberately run over any foreign object.
- Use extra care when loading or unloading the machine into a trailer or truck.
- Use care when pulling loads or using heavy equipment.
 - a. Use only approved drawbar hitch points.
 - b. Limit loads to those that you can safely control.
 - c. Do not turn sharply. Use care when backing.
 - d. Use counterweight(s), wheel weight or tire chains when suggested in attachment(s) instructions.

II. SLOPE OPERATION:

Slopes are a major factor related to loss-of-control and tip-over accidents, which can result in severe injury or death. *All slopes require extra caution.* If you cannot back up the slope or if you feel uneasy on it, do not mow it.

DO

- Mow up and down slopes, not across.
- Remove obstacles such as rocks, tree limbs, etc.
- Watch for holes, ruts, or bumps. Uneven terrain could overturn the machine. *Tall grass can hide obstacles.*
- Use slow speed. Choose a low gear so that you will not have to stop or shift while on the slope.
- Follow the manufacturer's recommendations for wheel weights or counterweights to improve stability.
- Use extra care with grass catchers or other attachments. These can change the stability of the machine.
- Keep all movement on the slopes *slow* and *gradual*. Do not make sudden changes in speed or direction.
- Avoid starting or stopping on a slope. If tires lose traction, turn off the blade(s) and proceed slowly *straight* down the slope.

DO NOT

- Do not turn on slopes unless necessary, and then slowly and gradually downhill, if possible.
- Do not mow near drop-offs, ditches or embankments. The

mower could suddenly turn over if a wheel is over the edge of a cliff or ditch, or if an edge caves in.

- Do not mow on wet grass. Reduced traction could cause sliding.
- Do not try to stabilize the machine by putting your foot on the ground.
- Do not use grass catcher on steep slopes.

III. CHILDREN:

Tragic accidents can occur if the operator is not alert to the presence of children. Children are often attracted to the machine and the mowing activity. *Never* assume that children will remain where you last saw them.

- Keep children out of the mowing area and under the watchful care of another responsible adult.
- Be alert and turn machine off if children enter the area.
- Before and when backing, look behind and *down* for small children.
- Never carry children. They may fall off and be seriously injured or interfere with safe machine operation.
- Never allow children to operate the machine.
- Use extra care when approaching blind corners, shrubs, trees, or other objects that may obscure vision.

IV. SERVICE:

- Use extra care in handling gasoline and other fuels. They are flammable and vapors are explosive.
 - a. Use only an approved container.
 - b. Never remove gas cap or add fuel with the engine running. Allow engine to cool before refueling. Do not smoke.
 - c. Never refuel the machine indoors.
 - d. Never store the machine or fuel container inside where there is an open flame, such as in a water heater.
- Check fuel supply before each use allowing space for expansion as the heat of the engine and/or sun can cause gasoline to expand and overflow the tank.
- Use extra care when handling battery acid. Acid contact with skin may cause severe burns. Eye contact may cause blindness.
- Use extra care when servicing the battery. Explosive gas is produced in the battery. Do not service the battery while smoking or near an open spark or flame. This may cause the battery to explode causing serious injury.
- Never run a machine inside a closed area. Exhaust fumes contain CARBON MONOXIDE, an ODORLESS and DEADLY GAS.
- Keep nuts and bolts, especially blade attachment bolts, tight and keep equipment in good condition.
- Never tamper with safety devices. Check their operation regularly.
- Do not change the engine governor settings or overspeed engine.
- Reduce fire hazards. Keep machine free of grass, leaves, or other debris build-up. Clean up oil or fuel spillage. Allow machine to cool before storing.
- Stop and inspect the equipment if you strike an object. Repair, if necessary, before restarting.
- Never make adjustments or repairs with the engine running.
- Grass catcher components are subject to wear, damage, and deterioration, which could expose moving parts or allow objects to be thrown. Frequently check components and replace with manufacturer's recommended parts, when necessary.
- Mower blade(s) are sharp and can cut. Wrap the blade(s) or wear gloves, and use extra caution when servicing them.
- Check brake operation frequently. Adjust and service as required.



**LOOK FOR THIS SYMBOL TO POINT OUT IMPORTANT SAFETY PRECAUTIONS. IT MEANS--ATTENTION!!!
BECOME ALERT!!! YOUR SAFETY IS INVOLVED.**

Record the following information about your unit so that you will be able to provide it in case of loss or theft.

MODEL NUMBER: - (Enter complete 8 digit number from model plate on unit)

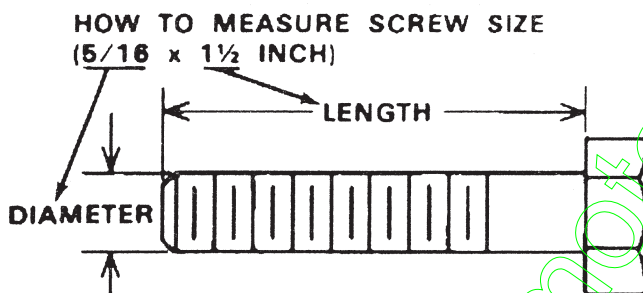
PURCHASE DATE: ___ / ___ / ___ CODE NO.: _____ SERIAL NO.: _____

DEALER'S NAME AND ADDRESS: _____

CITY: _____ STATE: _____ TELEPHONE: _____

TOOLS REQUIRED FOR ASSEMBLY

- 2 - 7/16 inch Wrenches (or adjustable wrench)
- 1 - 1/2 inch Wrench (or adjustable wrench)
- 1 - Small Phillips Screwdriver with a 1/4 inch shank
- 1 - Hammer



⚠ DANGER ⚠

This lawn tractor can be dangerous if carelessly used.

Read your Operator's Manual thoroughly before operating your lawn tractor.

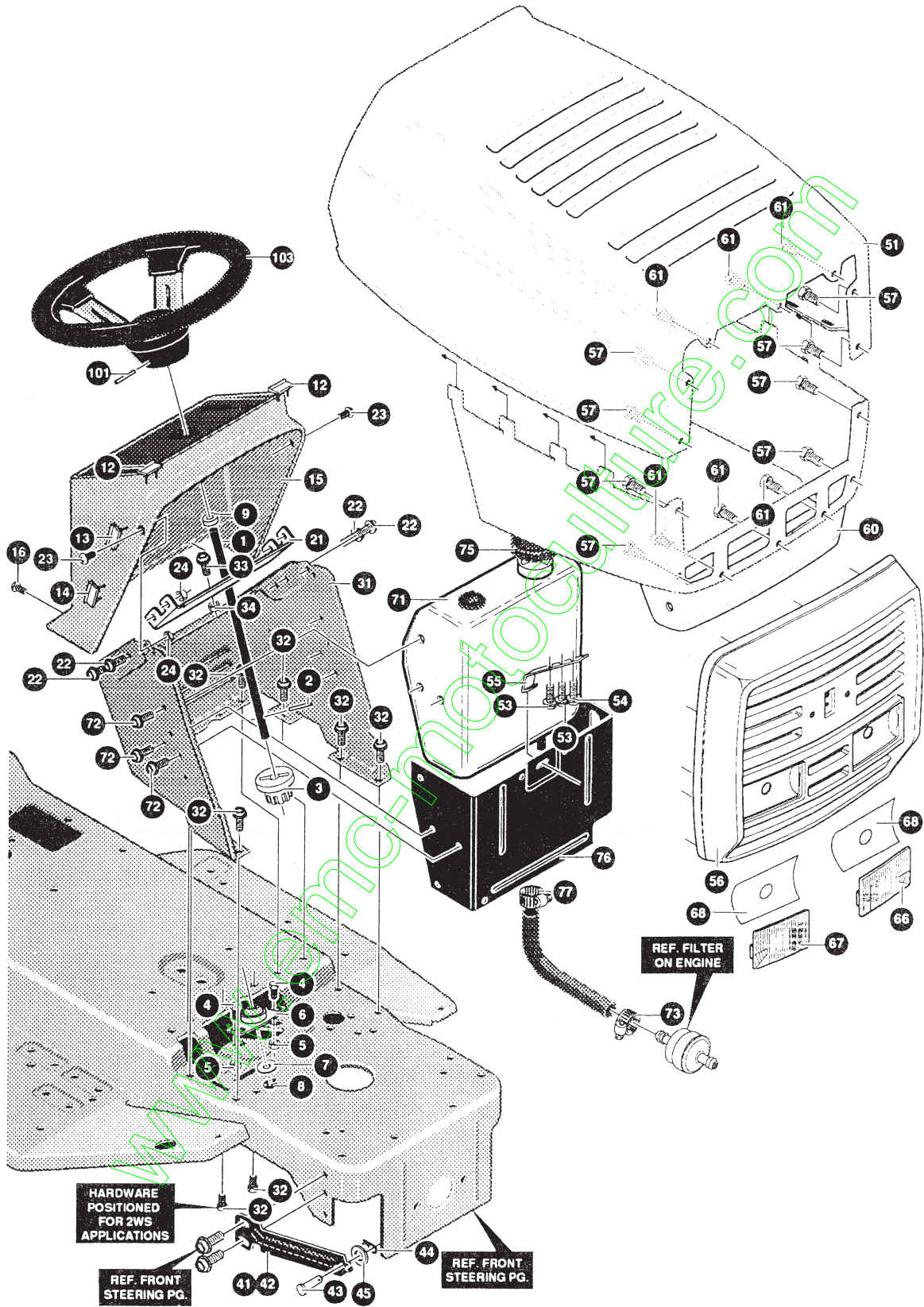
Always wear safety glasses or eye shields while assembling or operating your lawn tractor.

DO NOT carry passengers at any time.

Keep your hands, feet, hair and loose clothing away from the discharge area, the underside of the mower deck or any moving parts while the engine is running.

DO NOT allow children or young teenagers to operate or be near your lawn tractor while it is operating.

ALWAYS GIVE THE FOLLOWING INFORMATION WHEN ORDERING REPAIR PARTS:
1. The PART NUMBER; 2. The PART NAME; 3. QUANTITY DESIRED; 4. The MODEL NUMBER (As shown on Model Plate).
SEND PART ORDERS AS PER INSTRUCTIONS ON THE FRONT PAGE.
DO NOT USE KEY NUMBERS WHEN ORDERING REPAIR PARTS. ALWAYS USE PART NUMBERS
All replacement parts will be supplied in current production colors or in a neutral color.
A handling fee is applicable to small parts orders.
YOUR UNIT IS RIGHT HAND (RH) OR LEFT HAND (LH) AS YOU STAND BEHIND IT.

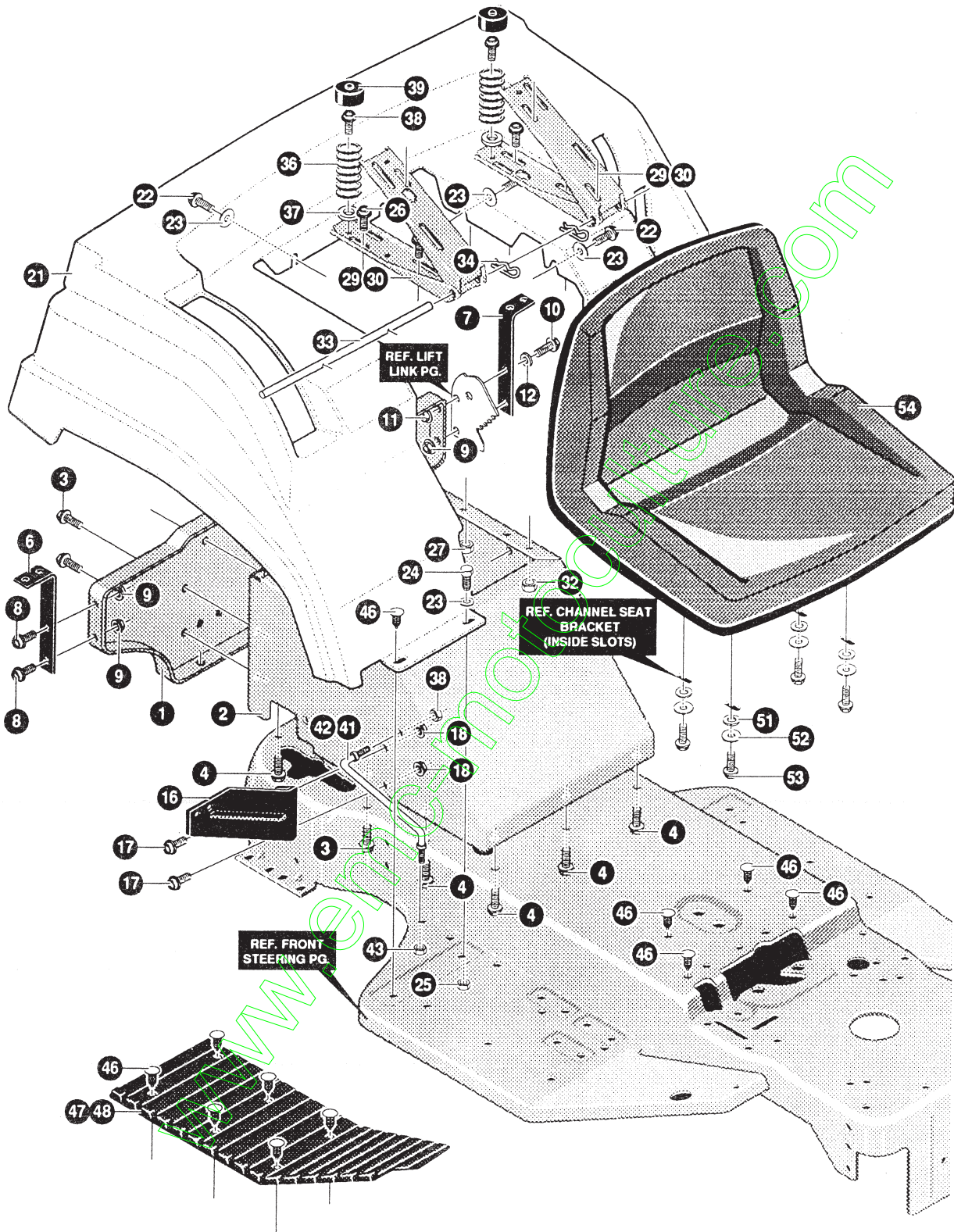


NOTE: ALWAYS USE ORIGINAL EQUIPMENT PARTS. Use of service/replacement parts other than original equipment parts may void your warranty.

ALL UNNUMBERED ITEMS ARE INTERCHANGEABLE WITH OPPOSITE SIDE

331722 A

KEY#	PART#	DESCRIPTION	QTY
1	315377	SHAFT,STEERING EURO MF LONG	1
2	302524	PIN DOWEL STR ERO LT	1
3	302314	PINION,STEERING	1
4	323731	SCREW,5/16-24X.75 (TQ 30-35 FT#)	2
5	71100	NUT, 5/16-24 HEXWDFLLK	1
6	302498	BRNG, SFAL .500IDX . ODX .75	1
7	2968	WASHER, FLAT .504X .75X.059	1
8	20864	RING, RET E .39X.04TRU5133-50	1
9	303228	BUSHING STR SHFT UPPER	1
12	321810	BUMPER,HOOD/DASH MF EURO TOP	2
13	324491	BUMPER,HOOD/DASH MF SIDE TOP	2
14	324492	BUMPER,HOOD/DASH SIDE BOTTOM	2
15	315245	DASH,M-F PLAS OPTION	1
16	305850	SCREW, 1/4-20X .50PHNTAP	2
21	314288-853	BRACE, CHICAGO1/MASSEY DASH	1
22	180020	SCREW, 1/4-20X .75 HHC	4
23	318139	SCREW, 1/4-20X .63PHPNHD BLACK	2
24	1502	NUT, 1/4-20 REGHEXCTRLK	5
31	315507-830	DASH, MASSEY FERGUSON STEEL	1
32	35497	SCREW, 5/16-18X .50 WAHHTAP	10
33	187745	SCREW, 1/4-20X .75 HXSEMMA	1
34	271172	NUT, 1/4-20 REGHEXKEPS	1
41	324756-853	BRACKET, HOOD LH	1
42	324757-853	BRACKET, HOOD RH	1
43	323044	PIN, CLEVIS .500 X .49/.51 LGTH	2
44	56180	PIN, HAIR .091 DIA X 1.62LG	2
45	996425	WASHER, FLAT .515X .88X.064	2
51	332278	HOOD,H22"MF/S MOLD IN RED	1
53	328056	SCREW, .25X.62X.51HHWAPLASTITE	2
54	311331	SCREW, 1/4-15X.44/.53 HILOHHWA	1
55	328055	SPRING MF HOOD (3.0 GAL TANK)	1
56	332280	GRILLE, H/22	1
57	316043	SCREW, 10X1.0 UNSL-HWH-HILO	8
60	332279	SKIRT, HOOD LOWER M/F RED	1
61	316881	SCREW, 10X.75 UNSL-HWH-HILO	6
66	314967	LENS LH MF/SEARS	1
67	314968	LENS RH MF/SEARS	1
68	322909	DECAL, REFLECTOR, MF GRILLE	2
71	315263	ASSY GAS TANK 1.5GAL (OPTION)	1
72	180073	SCREW, 5/16-18X .50 HHC	6
73	47345	CLAMP,HOSE SCREW TYPE	1
75	12501	CAP,FUEL 2.5" THROAT	1
76	324795-853	HEAT SHIELD ERO 1.5 & 3 GAL	1
77	47345	CLAMP,HOSE SCREW TYPE	1
101	456378	PIN, SPRING 250DIA X 2.00LG HVPL	1
103	330851	WHEEL,STEER 14SHORT EURO MF GREY	1
104	333491	PARTS MANUAL	1
105	333543	OPERATOR'S MANUAL (ENGLISH)	1

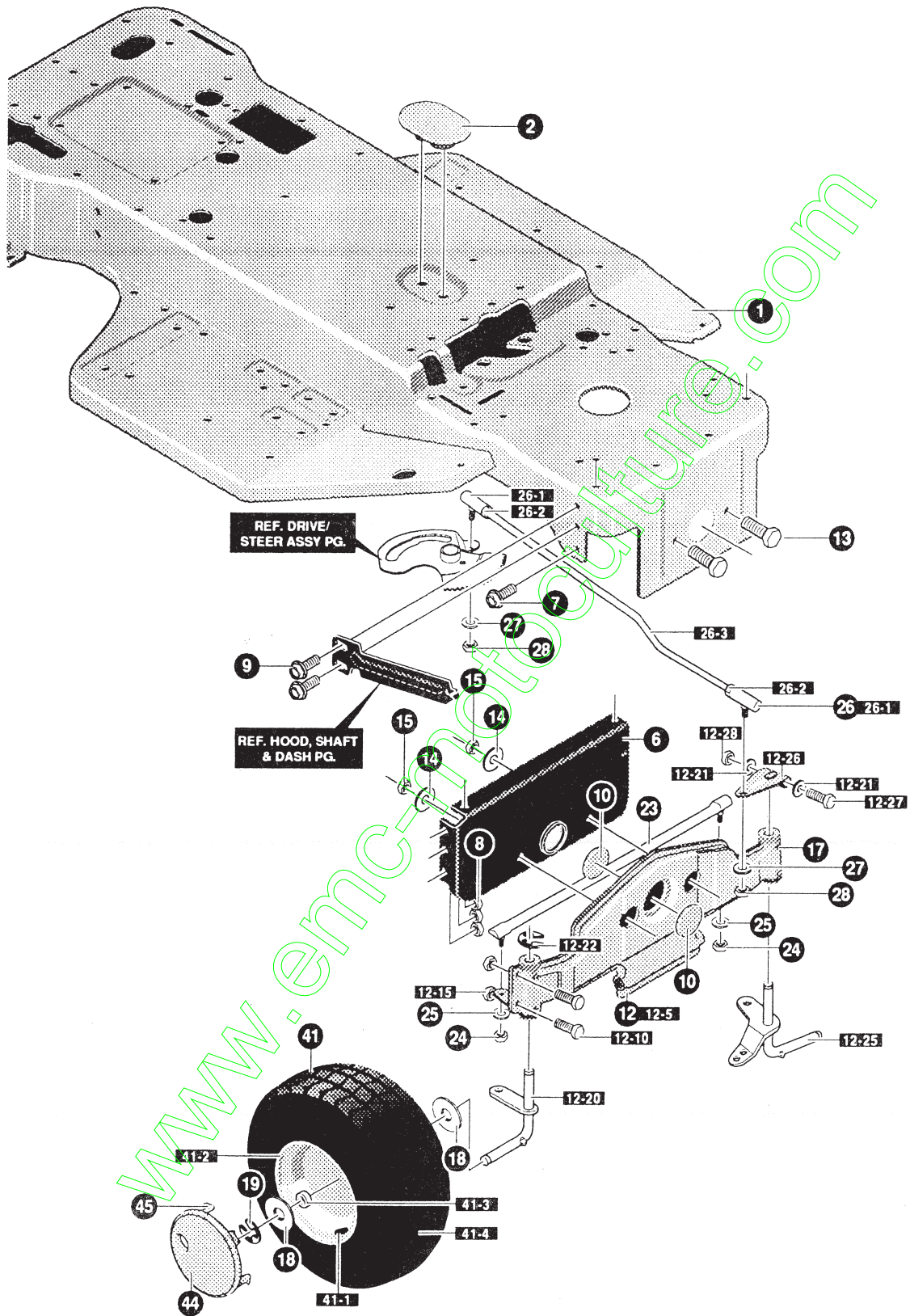


NOTE: ALWAYS USE ORIGINAL EQUIPMENT PARTS. Use of service/replacement parts other than original equipment parts may void your warranty.

ALL UNNUMBERED ITEMS ARE INTERCHANGEABLE WITH OPPOSITE SIDE

325970 F

KEY#	PART#	DESCRIPTION	QTY
1	322068-830	SEAT SUPPORT ELECTRIC LIFT	1
2	322069-830	SUPT,FENDER&SEAT ELECT/LIFT	1
3	35498	SCREW, 5/16-18X .75 WAHHTAP	5
4	35497	SCREW, 5/16-18X .50 WAHHTAP	10
6	306399	SUPT FEND RIGHT BLACK	1
7	306397	SUPT FEND LEFT BLACK	1
8	56030	SCREW, 5/16-18X .75WDFLLK	3
9	55273	NUT, 5/16-18 HXWDFLLK	3
10	180020	SCREW, 1/4-20X .75 HHC	1
11	51335	NUT, 1/4-20 WDFLWHIZ-LK	1
12	120385	WASHER, FLAT .250X .56X .049	1
16	305381-853	SUPPORT,SHIFT PLATE	1
17	56030	SCREW, 5/16-18X .75WDFLLK	2
18	55273	NUT, 5/16-18 HXWDFLLK	2
21	332277	FENDER,EURO F-10 GT MOLD GREY	1
22	44811	SCREW, 1/4-20X .75 WAHHTAP	6
23	1084	WASHER, FLAT .281X1.00X .063PL	8
24	180020	SCREW, 1/4-20X .75 HHC	2
25	1502	NUT, 1/4-20 REGHEXCTRLK	2
29	302897-830	CHANNEL SEAT RH	2
30	305424-830	CHANNEL SEAT LH	2
31	56030	SCREW, 5/16-18X .75WDFLLK	4
32	1498	NUT, 5/16-18 REGHEXCTRLK	4
33	304481	ROD, SEAT SUPPORT	1
34	36368	PIN, HAIR .072 DIA X 1.13LG	2
36	305520	SPRING, SEAT 1.50DX2.25LG BLK	2
37	120393	WASHER, FLAT .344X .69X .065	2
38	35498	SCREW, 5/16-18X .75 WAHHTAP	2
39	56907	COVER, SEAT SPRING 1.51DX1.0LG	2
41	319388	SUPPORT,FOOTREST STIFNR RH	1
42	319387	SUPPORT,FOOTREST STIFNR LH	1
43	1498	NUT, 5/16-18 REGHEXCTRLK	4
46	309235	FASTENER, RATCHET BLACK	18
47	314884	FOOT PAD, ASSYRH ERO W/ADH	1
48	314885	FOOT PAD, ASSYLH ERO W/ADH	1
51	120393	WASHER, FLAT .344X .69X .065	4
52	120638	WASHER, HVSP TLK .328X .60X .09	4
53	180077	SCREW, 5/16-18X .75 HHC	4
54	310384	SEAT,MICHIGAN GEN. W/SW HOLE	1

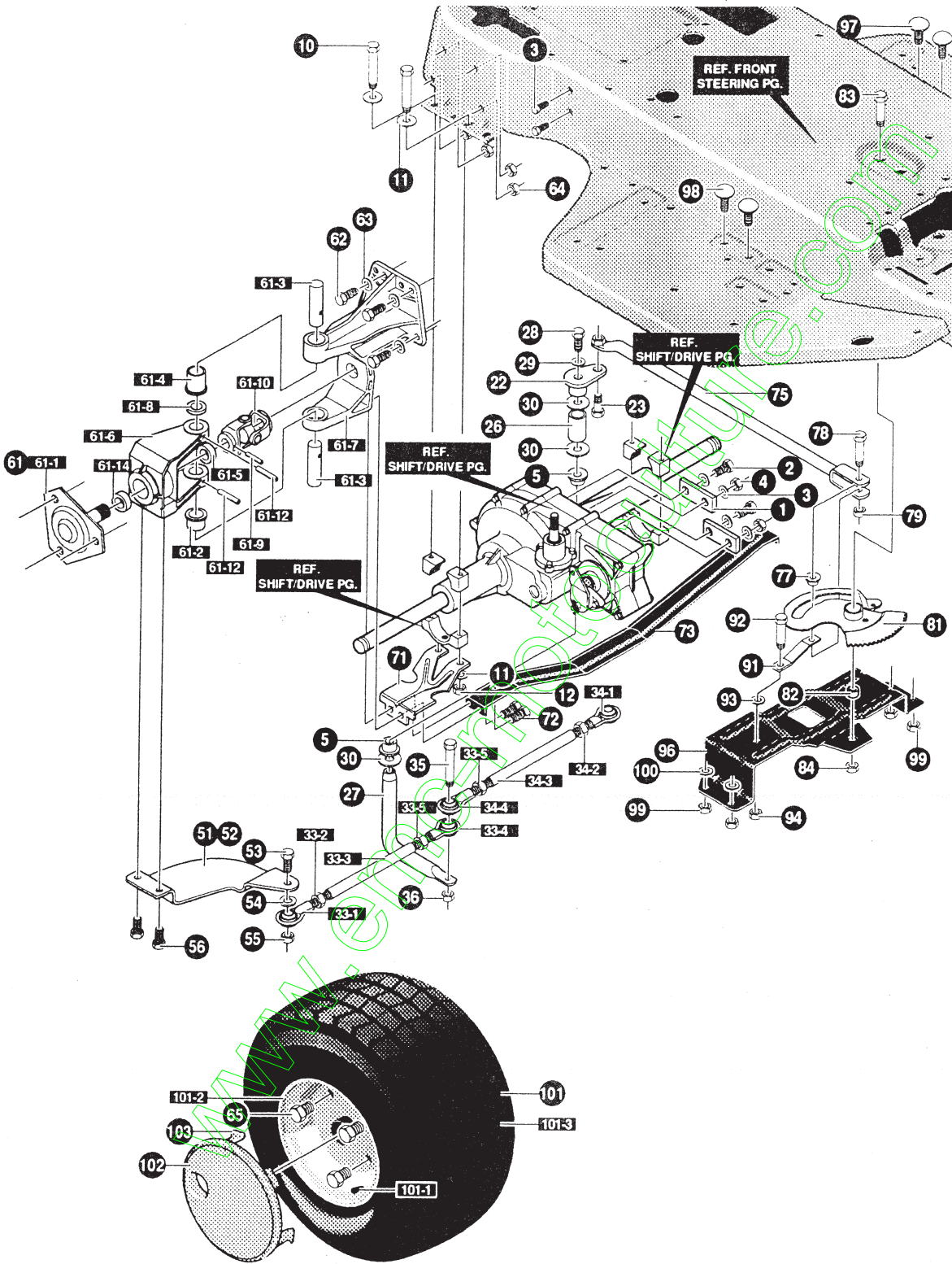


NOTE: ALWAYS USE ORIGINAL EQUIPMENT PARTS. Use of service/replacement parts other than original equipment parts may void your warranty.

ALL UNNUMBERED ITEMS ARE INTERCHANGEABLE WITH OPPOSITE SIDE

331878 D

KEY#	PART#	DESCRIPTION	QTY
1	331674-830	FRAME, EURO	1
2	305280	COVER, SECTOR BOLT PLAS GREY	1
6	302321-853	BRACKET, FRONT AXLE SUPPORT	1
7	56030	SCREW, 5/16-18X.75WDFLLK	2
8	55273	NUT, 5/16-18 HXWDFLLK	6
9	53652	SCREW, 5/16-18X.75 HXWDFL	4
10	307112	PLUG, FRONT AXLE 1.938DIA X .062"	2
12	^	SUB-ASSY FR AX ERO LT SHORT	1
12-5	310670	AXLE, ASSY FRONT WELD BLK	1
12-10	180077	SCREW, 5/16-18X.75 HHC	4
12-15	1498	NUT, 5/16-18 REGHEXCTRLK	4
12-20	305340	ASSY SPDLE RH EROLT	1
12-21	996416	WASHER, FLAT .391X1.00X.125	2
12-22	36625	RING, RETEX .57X.05TRU5133-75	1
12-25	305339	ASSY SPDLE LH EROLT	1
12-26	317019	ARM STEERING UPPER BLACK	1
12-27	180134	SCREW, 3/8-16X2.50 HHC	1
12-28	1499	NUT, 3/8-16 REGHXCTRLK	1
13	180138	SCREW, 3/8-16X3.00 HHC	2
14	2483	WASHER, 3/8IDX1.25DX.07 BELLVIL	2
15	1499	NUT, 3/8-16 REGHXCTRLK	2
17	706	ZERK, GREASE FITTING	4
18	642	WASHER, FLAT .755X1.31X.075	4
19	36625	RING, RETEX .57X.05TRU5133-75	2
23	300328	TIE ROD, 625DIA GRND ENGAGER	1
24	120369	NUT, 3/8-24 REGHEX	2
25	120382	WASHER, REGSPTLK 393X.68X.10	2
26	302908	LINK, ASSY 625DIA DRAG LT 4WS	1
26-1	57158	BALL JOINT 3/8 THD SHORT STUD	2
26-2	124925	NUT, 3/8-24 REGHEXJAM	2
26-3	302907	LINK, 625DIA DRAG LT 4WS	1
27	120382	WASHER, REGSPTLK 393X.68X.10	2
28	124925	NUT, 3/8-24 REGHEXJAM	2
41	321515	TIRE & RIM, PU 15X6.0X6 WHI	2
41-1	24167	VALVE STEM	
41-2	321516	RIM, WHEEL	
41-3	314416	BEARING, FL	
41-4		REFER TO TIRE TREAD PAGE	
44	304444	HUB CAP, 6" EURO GREY	2
45	306669	CLIP, HUBCAP TINN #C25467-017-4	8



NOTE: ALWAYS USE ORIGINAL EQUIPMENT PARTS. Use of service/replacement parts other than original equipment parts may void your warranty.

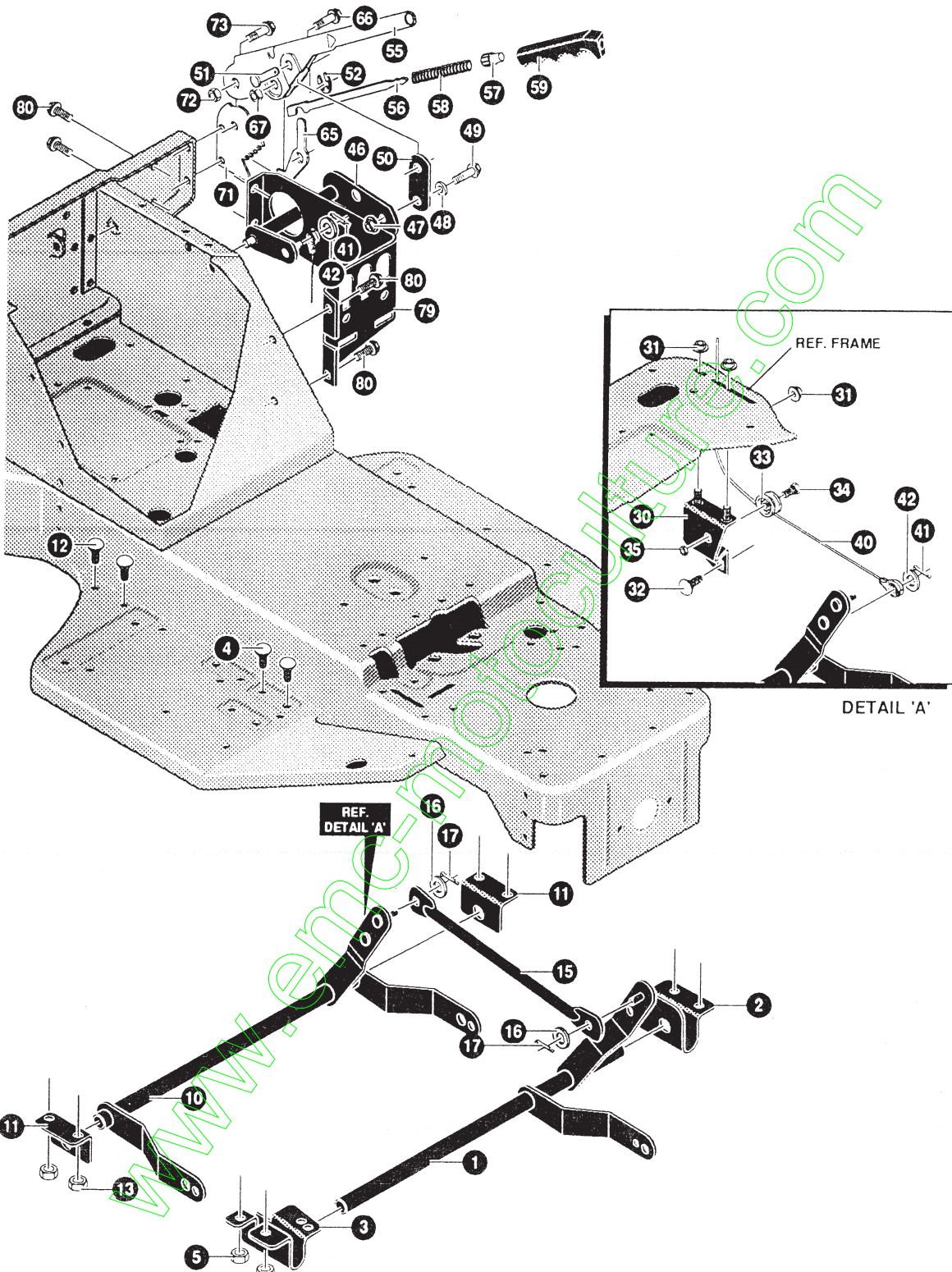
ALL UNNUMBERED ITEMS ARE INTERCHANGEABLE WITH OPPOSITE SIDE

325737 D

E4620-020

DRIVE/STEER ASSEMBLY

KEY#	PART#	DESCRIPTION	QTY
1	314511	BRACKET, REAR PIVOT HYDRO	2
2	44811	SCREW, 1/4-20X .75 WAHHTAP	2
3	120380	WASHER, REGSPTLK 263X.49X .07	4
4	120375	NUT, 1/4-20 REGHEX	2
5	302303	BEARING SPINDLE FR W/HOLE	2
10	180091	SCREW, 5/16-18X2.50 HHC	4
11	120393	WASHER, FLAT .344X .69X.065	8
12	44108	NUT, 5/16-18 HWDFLCTRLK	4
22	308719	PIVOT, STEERING	1
23	12319	BOLT, 5/62X .340 HSSH 3/8-24	1
26	313641	SPACER, STEERING SHAFT HYDRO	1
27	313649	SHAFT, STEERING PIVOT HYDRO	1
28	421051	SCREW, 5/16-24X1.00 HHC	1
29	45602	WASHER, FLAT .333X .87X.119	1
30	25177	WASHER, FLAT .765X1.19X.048	3
33	323636	TIE ROD, ASSYRH EURO 4WS&LFHYDR	1
33-1	308384	BALL JOINT LH 3/8-24	1
33-2	124925	NUT, 3/8-24 REGHEXJAM	1
33-3	313642	ROD, TIE 1/2"D X 6.75LG	1
33-4	304260	BALL JOINT, RH 3/8-24	1
33-5	308399	NUT, 3/8-24 LH THD REGHJAM	1
34	323637	TIE ROD, ASSYLH EURO 4WS&LFHYDR	1
34-1	308384	BALL JOINT LH 3/8-24	1
34-2	124925	NUT, 3/8-24 REGHEXJAM	1
34-3	313643	ROD, TIE 1/2"D X 10.91LG ZINC	1
34-4	304260	BALL JOINT, RH 3/8-24	1
34-5	308399	NUT, 3/8-24 LH THD REGHJAM	1
35	181646	SCREW, 3/8-24X1.75 HHC	1
36	412349	NUT, 3/8-24 HXCTRLK	1
51	304120-853	ARM REAR WHL STR (FER) R.H.	1
52	304121-853	ARM, REAR WHEEL STEER L.H.	1
53	181639	SCREW, 3/8-24X1.25 HHC	2
54	120382	WASHER, REGSPTLK 393X.68X .10	2
55	412349	NUT, 3/8-24 HXCTRLK	2
56	47792	SCREW, 3/8-16X1.00 WAHHTAP BLK	4
61	323736	U-JOINT, 4-WS HEAVY DUTY	2
61-1	315264	HUB ASSEMBLY HEAVY	1
61-2	12288	BEARING, FLSH .752 ID X .937 OD X .75	1
61-3	12289	PIN, STEERING HINGE	2
61-4	12321	BEARING, FLSH	1
61-5	12325	BEARING, BALL 6203-2AA-3/4	1
61-6	315267	BRACKET, STR PIVOT 6204 BEARING	1
61-7	12466	BRACKET, STR PIVOT	1
61-8	21682	WASHER, FLAT .765 X 1.25 X .042	1
61-9	36311	PIN, GROOVED .250 DIA X 1.50LG	1
61-10	320531	U-JOINT ASSEMBLY W/ZERK (LONG)	1
61-12	456722	PIN, SPRING .250 DIA X 1.50LG HVPL	2
61-14	315268	BEARING, BALL 6204-2AA-7/8	1
62	180079	SCREW, 5/16-18X1.00 HHC	8
63	120393	WASHER, FLAT .344X .69X.065	8
64	1498	NUT, 5/16-18 REGHEXCTRLK	8
65	181683	SCREW, 1/2-20X .50 HHC	6
71	313645-853	BRKT X-AXLE MTG 4WS HYDRO	2
72	35498	SCREW, 5/16-18X .75 WAHHTAP	4
73	322959-853	BRACKET HYDRO 4WS SUPPORT	1
75	313639	ROD R WHL STR 4WS(HYDRO)	1
77	304116	CAM YOKE ROLLER	1
78	304122	BOLT, 625 X1.175HSSH	1
79	274654	NUT, 1/2-20 REGHXCTRLK	1
81	302877	ASSY SECTOR GEAR 4WS	1
82	302878	BRNG, SLEV .IDX .ODX	1
83	181709	SCREW, 1/2-20X2.50 HHC	1
84	274654	NUT, 1/2-20 REGHXCTRLK	1
91	302594	FOLLOWER, ROLLER	1
92	302588	BOLT, 265X .800 HSSH 3/8-24	1
93	446363	WASHER, FLAT .375X .88X.082	1
94	412349	NUT, 3/8-24 HXCTRLK	1
96	302583-853	PLATE, PIVOT STEERING EURO	1
97	35497	SCREW, 5/16-18X .50 WAHHTAP	2
98	35498	SCREW, 5/16-18X .75 WAHHTAP	2
99	1498	NUT, 5/16-18 REGHEXCTRLK	4
100	446363	WASHER, FLAT .375X .88X.082	2
101	316665	TIRE & RIM, 20X10.00-8 WHITE	2
101-1	24167	VALVE STEM	
101-2	316667	RIM, WHEEL	
101-3		REFER TO TIRE TREAD PAGE	
102	304441	HUB CAP, 8" EURO GREY	2
103	306669	CLIP, HUBCAP TINN #C25467-017-4	10



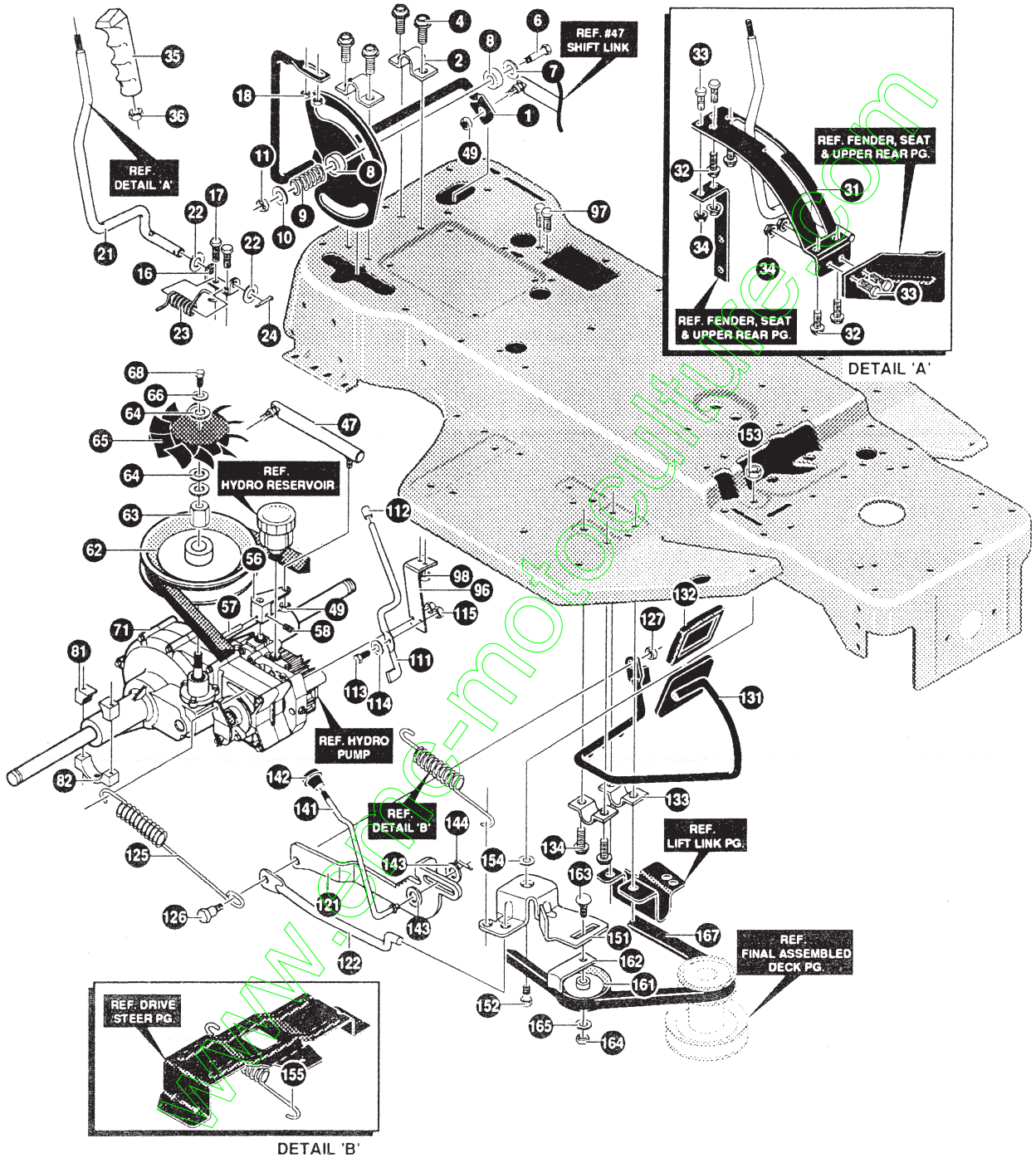
NOTE: ALWAYS USE ORIGINAL EQUIPMENT PARTS. Use of service/replacement parts other than original equipment parts may void your warranty.

ALL UNNUMBERED ITEMS ARE INTERCHANGEABLE WITH OPPOSITE SIDE

325734 C

KEY#	PART#	DESCRIPTION	QTY
1	302379-853	SHAFT, ASSY FRONT LIFT EURO	1
2	304967-853	BRACKET, FRONT HANGER RH	1
3	302338-853	BRACKET, FRONT HANGER LH	1
4	180077	SCREW, 5/16-18X .75 HHC	4
5	1498	NUT, 5/16-18 REGHEXCTRLK	4
10	309213-853	SHAFT, ASSY REARLIFT E/C EUR	1
11	302360-853	BRACKET, REAR HANGER EURO	2
12	180077	SCREW, 5/16-18X .75 HHC	4
13	1498	NUT, 5/16-18 REGHEXCTRLK	4
15	302380	RODS, TIE	1
16	120394	WASHER, FLAT .406X .81X .065	2
17	121222	PIN, COTTER .090 DIA X .75LG	2
30	303230	ASSY, PULLEY BRKT	1
31	55273	NUT, 5/16-18 HXWDFLLK	3
32	57072	BOLT, 5/16-18X .63 CARRLN	1
33	48306	PULLEY, POWDER METAL	1
34	305522	BOLT, .375X .700 HSSH 5/16-18	1
35	1498	NUT, 5/16-18 REGHEXCTRLK	1
40	303227	CABLE, DECK LIFT	1
41	121222	PIN, COTTER .090 DIA X .75LG	2
42	120393	WASHER, FLAT .344X .69X .065	2
46	302205	ASSY, UPPER SHAFT	1
47	1498	NUT, 5/16-18 REGHEXCTRLK	1
48	45602	WASHER, FLAT .333X .87X .119	1
49	36149	BOLT, .375X .500 HSSH 5/16-18	1
50	302357	LINK	1
51	300310	PIN, CLEVIS .310DIA+ .475LG	1
52	300311	RING, RET E .31X.25TRUX5133-31	1
55	58332-853	HEIGHT LEVER	1
56	58330	ROD, ACTUATOR	1
57	58325	KNOB, HEIGHT ADJ PUSH BUTTON	1
58	58326	SPRING, HEIGHT ADJUST	1
59	304730	GRIP, HAND .74ID X 5.15 CHAR	1
65	301239	PAWL, SQUARE	1
66	300171	BOLT, .500X .270 HSSH 5/16-18	1
67	44108	NUT, 5/16-18 HXWDFLCTRLK	1
71	302383	QUADRANT	1
72	1498	NUT, 5/16-18 REGHEXCTRLK	1
73	300171	BOLT, .500X .270 HSSH 5/16-18	1
79	302208-853	BRACKET, SUPPORT ENGAGE	1
80	35497	SCREW, 5/16-18X .50 WAHHTAP	4

www.mic-motors.com



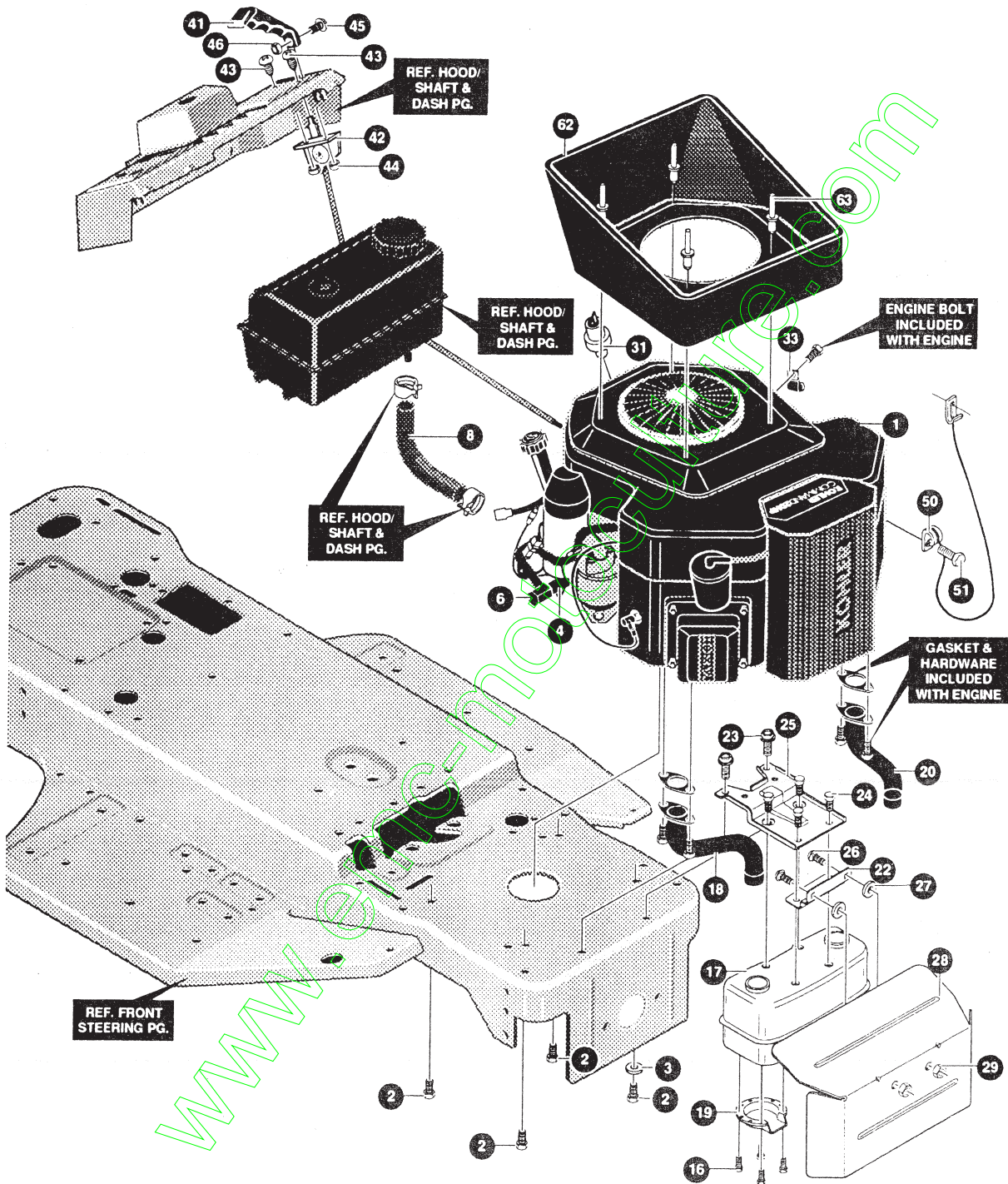
NOTE: ALWAYS USE ORIGINAL EQUIPMENT PARTS. Use of service/replacement parts other than original equipment parts may void your warranty.

ALL UNNUMBERED ITEMS ARE INTERCHANGEABLE WITH OPPOSITE SIDE

325730 D

KEY#	PART#	DESCRIPTION	QTY
1	310206-853	SHIFT ROD, ASSY BLK	1
2	313271	BRACKET CL/BR ARM	2
4	35497	SCREW, 5/16-18X .50 WAHTAP	4
6	180087	SCREW, 5/16-18X2.00 HHC	1
7	845	WASHER, FLAT .390X1.25X.119	1
8	49922	WASHER, FRICTION 1.25ODX.34ID	2
9	29170	SPRING	1
10	120393	WASHER, FLAT .344X.69X.065	1
11	1498	NUT, 5/16-18 REGHEXCTRLK	1
16	310356	BRKT, PIVOT SH LEV	1
17	180020	SCREW, 1/4-20X .75 HHC	2
18	46931	NUT, 1/4-20 WDFL MAC-LOCK	2
21	326925	ROD SHIFT	1
22	71073	WASHER, FLAT .469X.92X.065	5
23	310336	SPRING-TORSION HYDRO SHIFT	1
24	121222	PIN, COTTER .090 DIA X .75LG	1
31	310263-830	QUADRANT SHIFT HYDRO	1
32	300302	SCREW, #10 X .50 HHTAPPST BLK	4
33	180020	SCREW, 1/4-20X .75 HHC	4
34	51335	NUT, 1/4-20 WDFLWHIZ-LK	4
35	304729	HANDLE, 1/2-13 MOLDED	1
36	120238	NUT, 1/2-13 HEXJAM	1
47	324936	SHIFT LINK ASSY 625DIA	1
49	412349	NUT, 3/8-24 HXCTRLK	2
56	310180	ARM SPEED CONTROL HYDRO	1
57	456652	PIN, SPRING .187DIA X .88LG HVPL	1
58	102570	SCREW, 1/4-20X .38 NYLALHSETCPPT	1
62	310098	PULLEY ASSY HYDRO	1
63	310094	NUT PULLEY 1/2-20 AND 1/4-20	1
64	57626	WASHER, FLAT .281X1.25X.06	3
65	308523	FAN HYDRO 7.00DIA-10 BLADES	1
66	120380	WASHER, REGSPTLK.263X.49X.07	1
68	180020	SCREW, 1/4-20X .75 HHC	1
71	^	4WS TRANSAXLE, HG #217-1010S	1
81	310813	MOUNTING BLOCK LH HYDRO	4
82	310187	MOUNTING BLOCKS HYDRO	2
96	310179	STABILIZER BRACKET	1
97	180077	SCREW, 5/16-18X .75 HHC	2
98	1498	NUT, 5/16-18 REGHEXCTRLK	3
111	310261	ROD-RELIEF VALVE ZINC	1
112	314969	CAP, MEMORY ROD .38ID X .75 BK	1
113	310088	BOLT, .250X .312 HSSH 1/4-20	1
114	2483	WASHER, .39ID X 1.25DX.07 BELLVIL	1
115	1498	NUT, 5/16-18 REGHEXCTRLK	1
121	310260	LEVER PARK BRAKE	1
122	314738	ROD CLUTCH	1
125	325009	SPRING, BRAKE HG HYDRO (EURO)	1
126	310087	BOLT, .500X .500 HSSH 5/16-18	1
127	1498	NUT, 5/16-18 REGHEXCTRLK	1
131	310257-853	ASSY, WELD CL/BR ROD	1
132	302335	PAD, CLUTCH/BRAKE MOLD W/L BLK	1
133	313271	BRACKET CL/BR ARM	2
134	35497	SCREW, 5/16-18X .50 WAHTAP	2
141	304217	ROD, PARKING BRAKE	1
142	304367	KNOB, PARK BRAKE BLK853	1
143	120385	WASHER, FLAT .250X .56X.049	2
144	121223	PIN, COTTER .062 DIA X .75LG	1
151	314786	ARM IDLERS	1
152	310269	BOLT, .621X .143 HSSH 5/16-18	1
153	1498	NUT, 5/16-18 REGHEXCTRLK	1
154	45602	WASHER, FLAT .333X .87X.119	1
155	313660	SPRING, CLUTCH .113X.750X6.88	1
161	303031	PULLEY, IDLER V4L 3.12EFF DIA	1
162	39659	RETAINER, BELT	1
163	45892	BOLT, 3/8-16X1.50 CARRSN	1
164	120377	NUT, 3/8-16 REGHX	1
165	120382	WASHER, REGSPTLK.393X.68X.10	1
167	310275	BELT, V 4L 82.5 HYDRO TRACTION	1

^ SEE TRANSAXLE BREAKDOWN PAGES IN THIS MANUAL



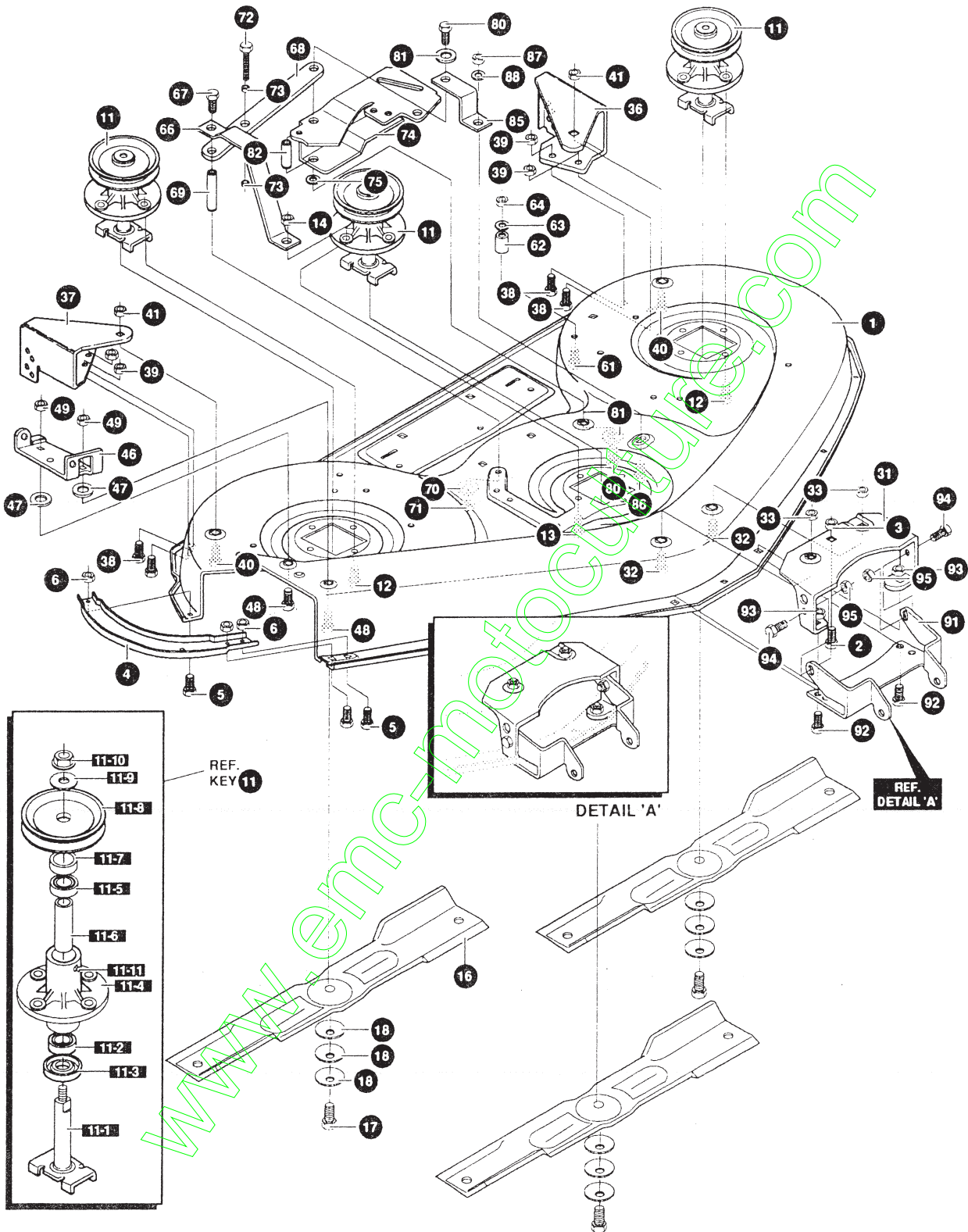
NOTE: ALWAYS USE ORIGINAL EQUIPMENT PARTS. Use of service/replacement parts other than original equipment parts may void your warranty.

ALL UNNUMBERED ITEMS ARE INTERCHANGEABLE WITH OPPOSITE SIDE

332161 A

KEY#	PART#	DESCRIPTION	QTY
1	ENGINE	KOHLER COMAND(SEE ENGINE MANUAL)	1
2	50947	SCREW, 3/8-16X1.25 WAHHTAP	4
3	138489	WASHER, EXLK 384X 69X 04	1
4	307174	NIPPLE 3/8-18 NPT X 4" ZINC	1
6	47828	CAP, PIPE 3/8-18 NPT	1
8	50118	TUBING, .25X.50X BULK GAS LINE	13.0
16	35287	SCREW, #8-32X .38 HHWATAP	4
17	305553	MUFFLR 14/18 TWIN NLSN 22785C	1
18	331939	EXHAUST TUBE 20HP KOHLER COMM	1
19	56472	DEFLECTOR SIDE OUT (BS222573)	1
20	331940	EXHAUST TUBE 20HP KOHLER COMM	1
22	9796	BRKT, TRANSAXLE	1
23	35497	SCREW, 5/16-18X .50 WAHHTAP	2
24	44811	SCREW, 1/4-20X .75 WAHHTAP	4
25	332326-853	BRACKET, MUFFLER KOHLER COMND	1
26	57072	BOLT, 5/16-18X .63 CARRLN	2
27	309436	PUSHNUT, 5/16 BOLT RETAINER	2
28	332317-853	SHIELD, KHLR COMAND V TWIN MFFLR	1
29	55273	NUT, 5/16-18 HXWDFLLK	2
31	314797	OIL SENSOR, B&S TWIN CYL	1
33	57569	RETAINER, .31IDX 62X 03 WIRE	1
41	50607	KNOB, ROUND THROTTLE, BLAK	1
42	332322	THRTL, CTRL H22/KHLR COMM(44")	1
43	320553	SCREW, 10-24X .63 PHPNMA CRSS	2
44	308459	NUT, #10-24 HXHDNYLK	2
45	159585	SCREW, #8-32X .38 PHPNMA	1
46	120622	NUT, #8-32 REGHX	1
50	310748	LANYARD, HOOD, 15.77LG H15	1
51	318304	SCREW, 1/4-14X .75 PHPNHDTAP BLK	1
62	333066	PLENUM, KHLR V EURO MF H17 BLK	1
63	329238	RIVET, POP 3/16 DIA X .75 LG FLG	4

www.emc-motors.com

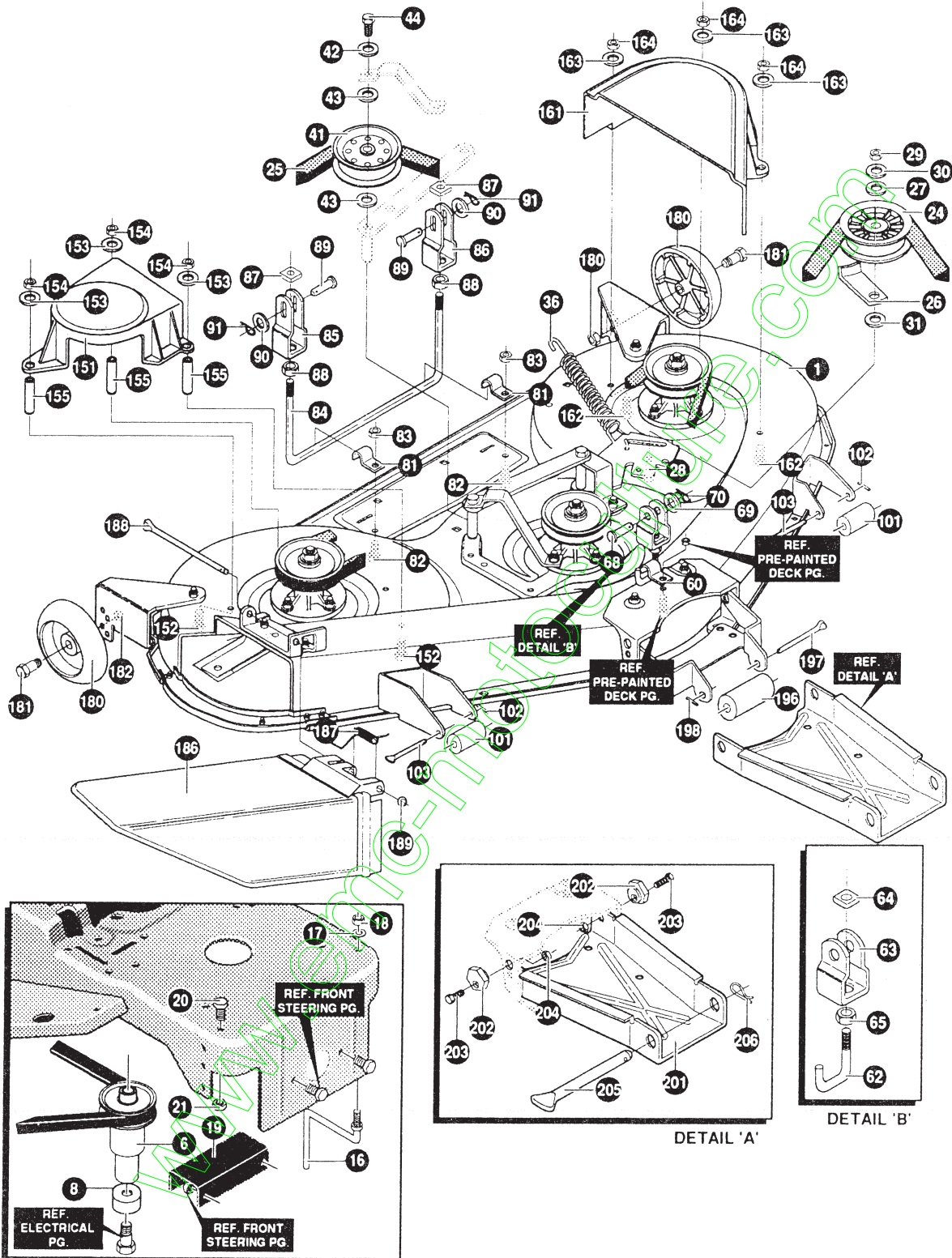


NOTE: ALWAYS USE ORIGINAL EQUIPMENT PARTS. Use of service/replacement parts other than original equipment parts may void your warranty.

ALL UNNUMBERED ITEMS ARE INTERCHANGEABLE WITH OPPOSITE SIDE

329072 B

KEY#	PART#	DESCRIPTION	QTY
1	322056	MOWER DECK 46"SD ASSY EURO	1
2	180077	SCREW, 5/16-18X .75 HHC	1
3	1498	NUT, 5/16-18 REGHEXCTRLK	1
4	312702	BRACE, SKID	1
5	57072	BOLT, 5/16-18X .63 CARRLN	3
6	1498	NUT, 5/16-18 REGHEXCTRLK	3
11	320038	QUILL 46"DECK W/ZERKS ASSY	3
11-1	320034	SHAFT/SADDLE 46" DECK	1
11-2	1255	BRNG, BALL 6203-A-C3 (SEAL)	1
11-3	50616	DUST SHIELD	1
11-4	320037	QUILL CASTING 46"DECK MACHINED	1
11-5	49562	BRNG, BALL 6203-2AA(SEALS)-C3	1
11-6	320032	SPACER, SLEV .669X .88X4.281	1
11-7	320567	SPACER QUILL, 46 INCH DECK	1
11-8	320046	46" QUILL PULLEY SPLIT-STEEL	1
11-9	320566	WASHER, SPECIAL QUILL 46 DECK	1
11-10	1282	NUT, 7/16-20 WDFLLK	1
11-11	706	ZERK, GREASE FITTING	1
12	35498	SCREW, 5/16-18X .75 WAHTAP	11
13	300345	SCREW, 5/16-18X1.38 WAHTAP	1
14	1498	NUT, 5/16-18 REGHEXCTRLK	1
16	317071	BLADE, 16.13 HIGHLIFT BLACK	3
17	39573	SCREW, 3/8-24X1.00 NYLHHC	3
18	2483	WASHER, 39IDX1.25DX.07 BELLVIL	9
19	66609	DECAL, REGISTRATION	1
31	312705	LIFT SUPT BRKT	1
32	57072	BOLT, 5/16-18X .63 CARRLN	2
33	1498	NUT, 5/16-18 REGHEXCTRLK	2
36	312708	BRKT GAUGE WHEEL LH BLACK	1
37	312700	BRACKET GAUGE WHEEL R.H.	1
38	180077	SCREW, 5/16-18X .75 HHC	4
39	1498	NUT, 5/16-18 REGHEXCTRLK	4
40	57072	BOLT, 5/16-18X .63 CARRLN	2
41	1498	NUT, 5/16-18 REGHEXCTRLK	2
46	322248	BRACKET CHUTE MOUNT 46	1
47	120395	WASHER, FLAT .469X .92X.065	2
48	57072	BOLT, 5/16-18X .63 CARRLN	9
49	1498	NUT, 5/16-18 REGHEXCTRLK	2
61	126358	BOLT, 5/16-18X1.00 CARRLN	1
62	50520	SPACER	1
63	35214	WASHER, FLAT .328X1.06X.062	1
64	1498	NUT, 5/16-18 REGHEXCTRLK	1
66	320373	BRACKET, PULLEY SUPPORT	1
67	122194	SCREW, 3/8-16X2.50 HHC	1
68	320371	SUPPORT, STRAP	1
69	320369	SUPPORT SHAFT	1
70	120382	WASHER, REGSPTLK.393X.68X.10	1
71	122119	SCREW, 3/8-16X .75 HHC	1
72	121940	SCREW, 1/4-20X1.75 HHC	1
73	271172	NUT, 1/4-20 REGHEXKEPS	2
74	322117	IDLER ARM40/43/46DECK	1
75	417098	WASHER, FLAT .531X1.06X.063	1
80	181608	SCREW, 5/16-24X1.00 HHC	2
81	120638	WASHER, HVSPTLK .328X.60X.09	2
82	320370	IDLER SHAFT 46" DECK	1
85	320372	BRACKET, IDLER SUPPORT	1
86	57081	BOLT, 3/8-16X .75 CARRLN	1
87	271190	NUT, 3/8-16 HEXKEPS	1
88	120394	WASHER, FLAT .406X .81X.065	1
91	312704	BRACKET, MOUNTING 46" DECK	1
92	180077	SCREW, 5/16-18X .75 HHC	2
93	1498	NUT, 5/16-18 REGHEXCTRLK	2
94	180079	SCREW, 5/16-18X1.00 HHC	2
95	1498	NUT, 5/16-18 REGHEXCTRLK	2

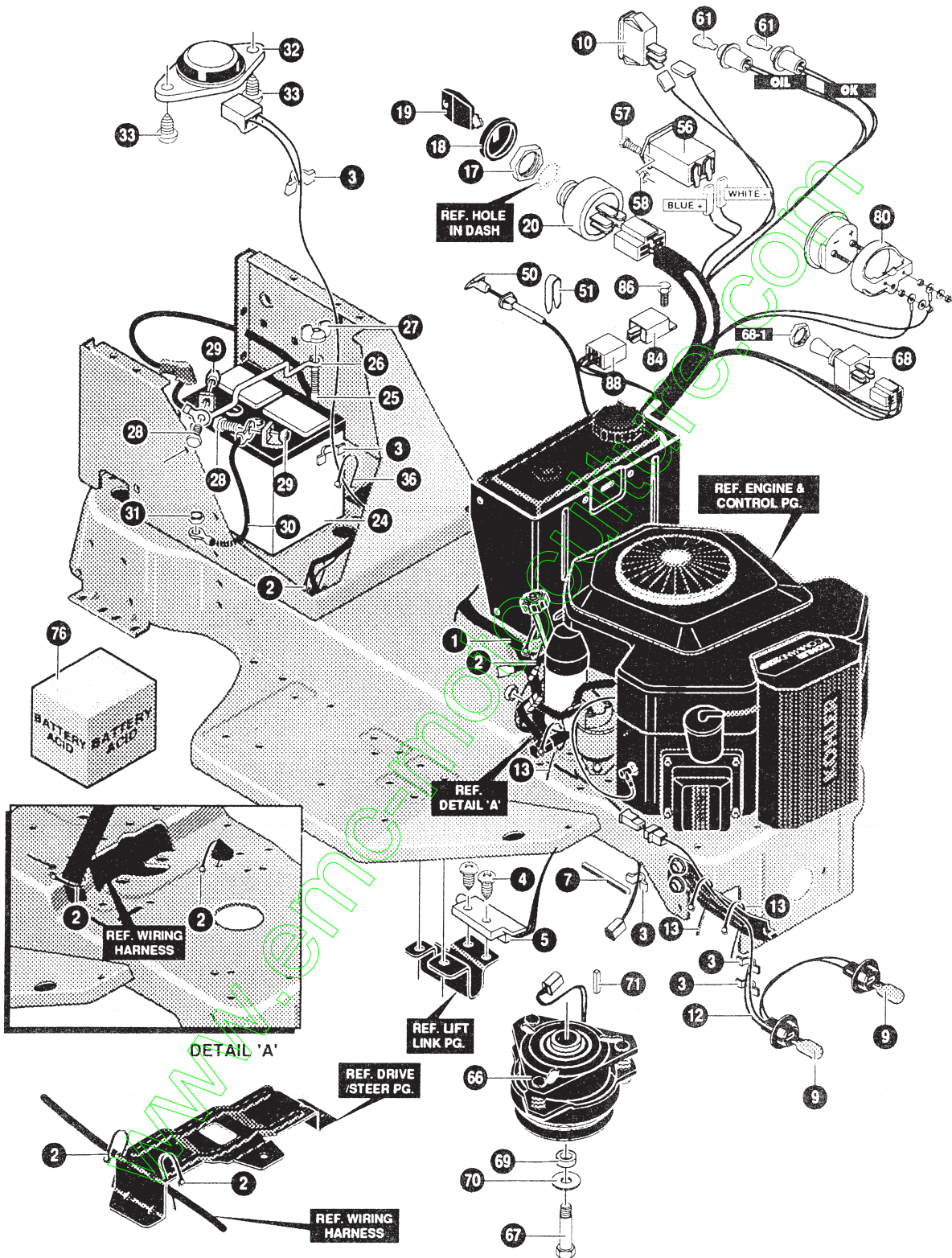


NOTE: ALWAYS USE ORIGINAL EQUIPMENT PARTS. Use of service/replacement parts other than original equipment parts may void your warranty.

ALL UNNUMBERED ITEMS ARE INTERCHANGEABLE WITH OPPOSITE SIDE

331719 A

KEY#	PART#	DESCRIPTION	QTY
1	329072-830	DECK,46 EC, W/Z,W/R, HI-LIF	1
6	332351	PULLEY,ENGINE EL/CL EURO LT	1
16	300440	GUIDE, BELT, RIDER	1
17	138538	WASHER, REGINTLK.320X.61X.03	1
18	1498	NUT, 5/16-18 REGHEXCTRLK	1
19	309011-853	BRACKET, CLUTCH STOP 40/46 E/C	1
20	180075	SCREW, 5/16-18X .63 HHC	1
21	1498	NUT, 5/16-18 REGHEXCTRLK	1
24	310326	PULLEY, IDLER BFF 4.00 WIDE FL	1
25	319869	BELT, V 5L 129LG 46"EURO E/C	1
26	1346	RETAINER, BELT	1
27	446363	WASHER, FLAT .375X .88X.082	1
28	57325	BOLT, 3/8-16X2.00 CARRSN	1
29	120377	NUT, 3/8-16 REGHX	1
30	120382	WASHER, REGSPTLK.393X.68X.10	1
31	996416	WASHER, FLAT .391X1.00X.125	1
36	320375	SPRING, 46" ELECT/CLUTCH EURO	1
41	303030	PULLEY, IDLER BFF 4.00 DIA	1
42	120382	WASHER, REGSPTLK.393X.68X.10	1
43	996416	WASHER, FLAT .391X1.00X.125	2
60	319868	CLIP, 40/46 HANGER	1
62	309615	ROD, 40" REAR DECK LIFT	1
63	304443	CLEVIS	1
64	109527	NUT, 1/2-13 .458 SQ	1
65	120238	NUT, 1/2-13 HEXJAM	1
68	300317	PIN, CLEVIS .375DIA X .81 LG	1
69	274517	WASHER, FLAT .406X .73X.063	1
70	56180	PIN, HAIR .091 DIA X 1.62LG	1
81	312701	CLIP, BLACK	2
82	180077	SCREW, 5/16-18X .75 HHC	2
83	1498	NUT, 5/16-18 REGHEXCTRLK	2
84	322179	ROD, LIFT 46" DECK EURO LT	1
85	305283	CLEVIS, SLOT EURO	1
86	304443	CLEVIS	1
87	109527	NUT, 1/2-13 .458 SQ	2
88	120238	NUT, 1/2-13 HEXJAM	2
89	300317	PIN, CLEVIS .375DIA X .81 LG	2
90	274517	WASHER, FLAT .406X .73X.063	2
91	56180	PIN, HAIR .091 DIA X 1.62LG	2
101	310072	ROLLER 3 X 5.15 I.D. X 2.5 O.D	2
102	121222	PIN, COTTER .090 DIA X .75LG	2
103	309229	ROD SUPPORT, ZINC	2
151	320569	GUARD BELT R.H. 46"DECK LF	1
152	126385	BOLT, 5/16-18X2.25 CARRLN	3
153	120393	WASHER, FLAT .344X .69X.065	3
154	1498	NUT, 5/16-18 REGHEXCTRLK	3
155	321173	SPACER, GUARD 46" LF/EURO -LONG	3
161	330520	GUARD, BELT LH PLASTIC	1
162	57072	BOLT, 5/16-18X .63 CARRLN	3
163	120393	WASHER, FLAT .344X .69X.065	3
164	1498	NUT, 5/16-18 REGHEXCTRLK	3
180	302611	GAUGE WHEEL, EURO 6.00ODX1.38WD	2
181	23763	BOLT, .500X1.390 HSSH 3/8-16	2
182	1499	NUT, 3/8-16 REGHXCTRLK	2
186	304733	CHUTE, DISCHARGE 46" DECK	1
187	314975	SPRING, TORSION CHUTE DEFLECTOR	1
188	305251	ROD, PIVOT 46"DECK .312DX6.12	1
189	309436	PUSHNUT, 5/16 BOLT RETAINER	1
196	310071	ROLLER 6 X 5.15 I.D. X 2.5 O.D	1
197	309186	ROD, SUPPORT ZINC	1
198	137185	PIN, COTTER .125 DIA X 1.00LG	1
201	310800-830	CHANNEL DRAWBAR 40 EURO	1
202	58247	NUT, ADJUST	2
203	180079	SCREW, 5/16-18X1.00 HHC	2
204	1498	NUT, 5/16-18 REGHEXCTRLK	2
205	302963	ROD DRAWBAR	1
207	56180	PIN, HAIR .091 DIA X 1.62LG	1



NOTE: ALWAYS USE ORIGINAL EQUIPMENT PARTS. Use of service/replacement parts other than original equipment parts may void your warranty.

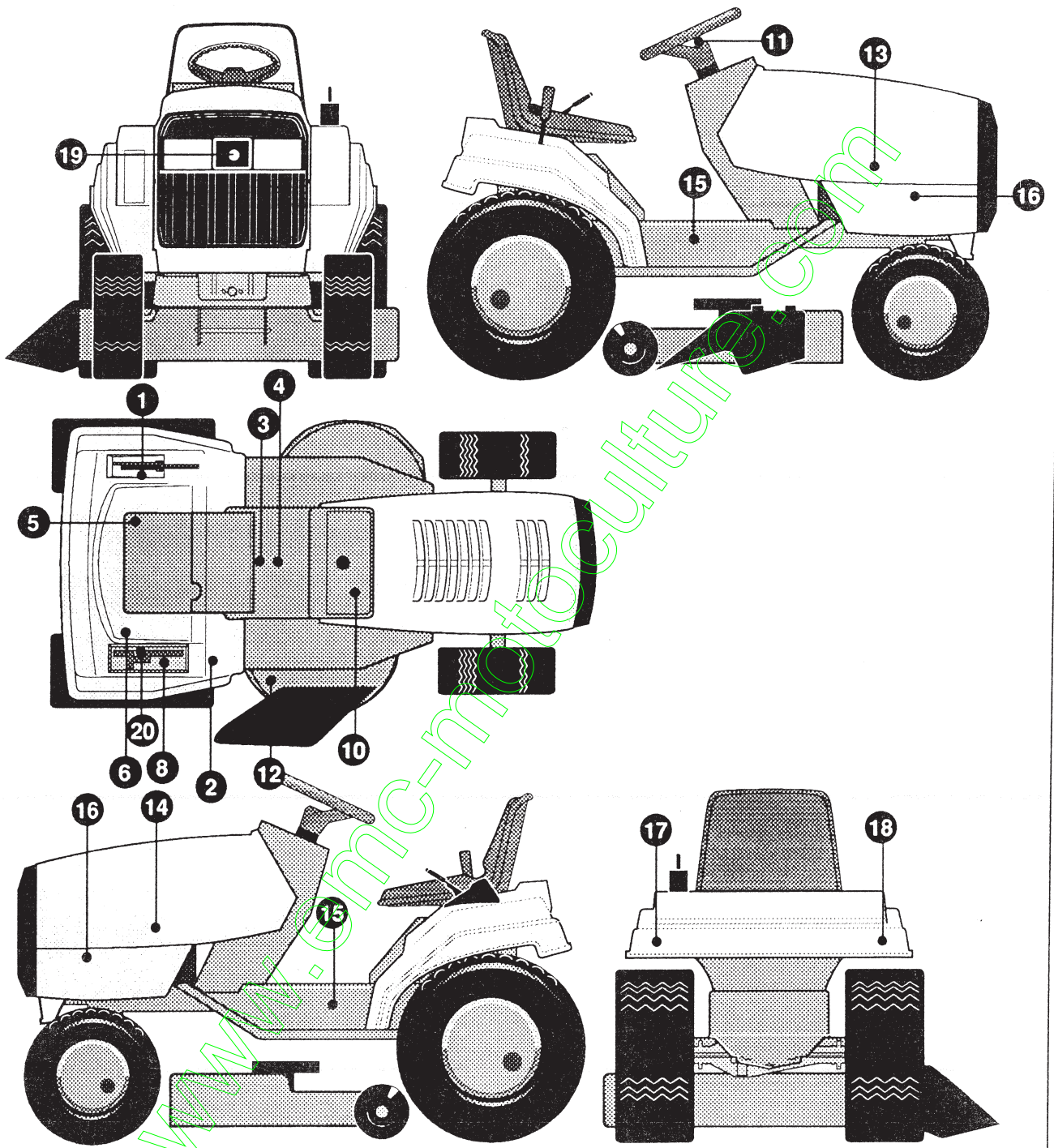
ALL UNNUMBERED ITEMS ARE INTERCHANGEABLE WITH OPPOSITE SIDE

332162 A

KEY#	PART#	DESCRIPTION	QTY
1	331583	HARNESS,KOHLER COMAND E/C WIRE	1
2	57444	TIE, CABLE BLACK NYLON 5.62L	6
3	41482	PRESS CLIP,1.380LG .255ID	5
4	57220	SCREW, #12 X .50 PHPNHTAP BLK	2
5	57476	SWITCH,SCR MNT DP NC NO BLK	1
7	52151	EDGING (78"-47453) WIDE BLK	3
9	52572	BULB, HEADLAMP	2
10	300334	LIGHT SWITCH ON/OFF PANEL MNT	1
12	303064	ASSY,LIGHT WIRE-1/4 TURN	1
13	57444	TIE, CABLE BLACK NYLON 5.62L	3
17	327352	NUT, 5/8-8ACME DELTA FOR BOOT	1
18	300194	BOOT, IGN SWITCH	1
19	327350	KEY,IGNITION DELTA	2
20	327355	SWITCH-IGN.(AFTER FIRE) 3 POSN	1
24	306694	BATTERY,12V	1
25	57551	ROD, BATTERY	1
26	302912	ROD, BATTERY TOP 209DI	1
27	325232	NUT, WING 1/4-20 NYLON	1
28	180020	SCREW, 1/4-20X .75 HHC	2
29	271172	NUT, 1/4-20 REGHEXKEPS	2
30	55511	WIRE, GROUND 12.5"	1
31	271184	NUT, 5/16-18 HEXKEPS	1
32	57547	SWITCH, SEAT	1
33	160505	SCREW, 1/4-20X .38PHPNHMA	2
36	57444	TIE, CABLE BLACK NYLON 5.62L	2
50	332323	CHOKE CONT KHLR COMM ERO H22	1
51	314522	CLIP,CHOKE CONTROL	1
61	57769	BULB, INDICATOR	2
66	326108	CLUTCH, EL 12/18HP REG CHARGER	1
67	215649	SCREW, 7/16-20X5.50 HHC	1
68	309285	SWITCH,ELEC/CLUT ACTUATOR EURO	1
69	319622	BRNG, FL .510IDX .100DX .56L	1
70	120383	WASHER, REGSPTLK.459X.78X.12	1
71	305562	KEY, SQUARE .250SQX2.12LG	1
76	^	BATTERY ACID PACK, 80 OZ	1
80	315902	AMMETER ASSY=>309373,121685,	1
84	309284	RELAY,OPERATOR PRESENCE EURO	1
86	320553	SCREW, 10-24X.63PHPNMA CRSS	1
88	308459	NUT, #10-24 HXHDNYLK	1

^ CAN BE PURCHASED LOCALLY

www.elec-m.com



NOTE: ALWAYS USE ORIGINAL EQUIPMENT PARTS. Use of service/replacement parts other than original equipment parts may void your warranty.

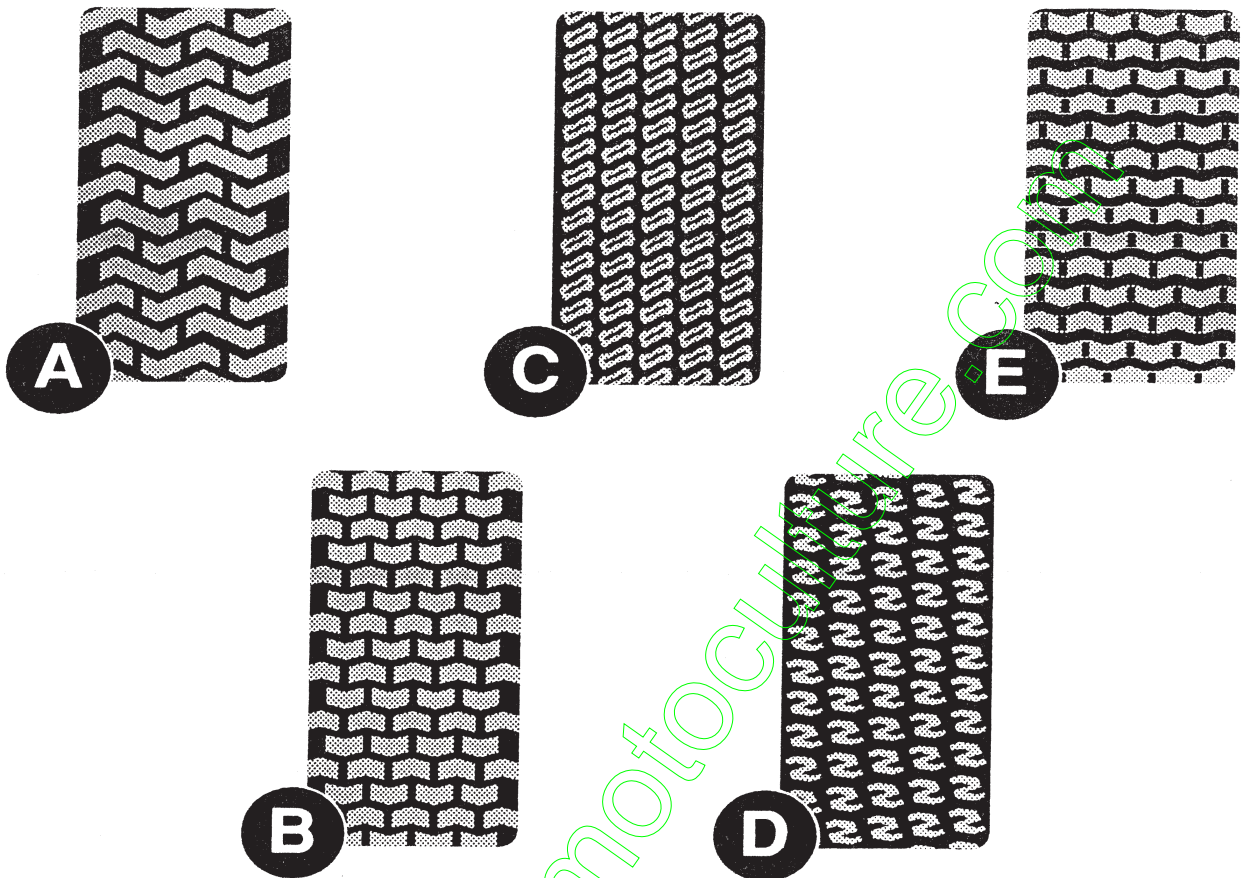
ALL UNNUMBERED ITEMS ARE INTERCHANGEABLE WITH OPPOSITE SIDE

331725 A

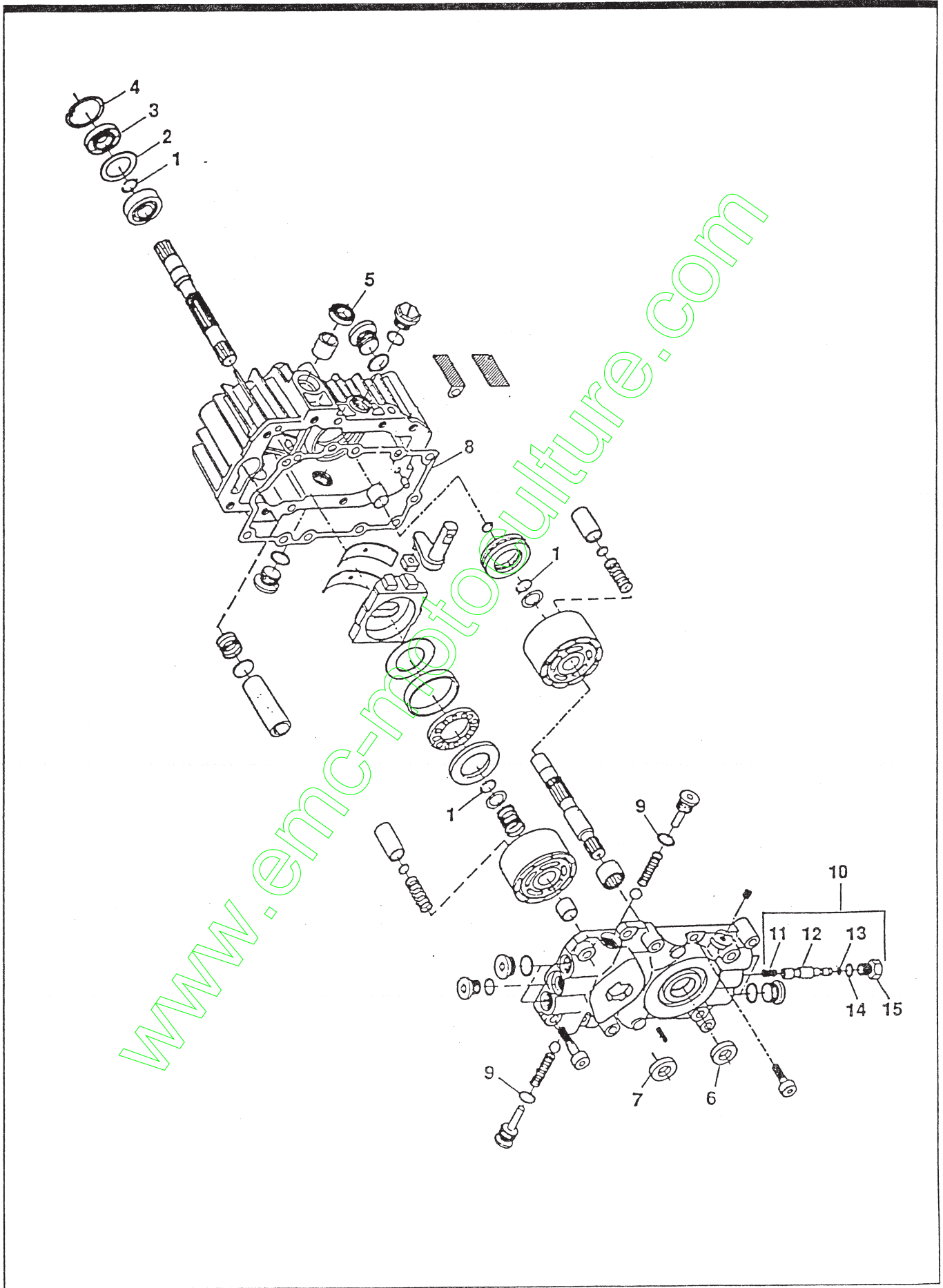
KEY#	PART#	DESCRIPTION	QTY
1	311591	DECAL-DECK HEIGHT EURO ELEC/CL	1
2	310553	DECAL,DANGER ENGLISH	1
3	307383	DECAL,INSTR. CONSOLE TOP ENGL	1
4	322763	DECAL,OPER INST ERO TOP FRAME	1
5	316861	DECAL, RELIEF VALVE OPERATION	1
6	313039	DECAL, 4WS PATENT NO. 5048853	1
8	313539	DECAL, DEPRESS CL/BRAKE BLACK	1
10	333055	DECAL,DASH H22 AMP/ASG/OP/EC	1
11	332879	STEERING WHEEL POP	1
12	402346	DECAL, 3-N-1 MOWER DECK	1
13	402460	DECAL, HOOD RH PERFORMANCE H22	1
14	402461	DECAL, HOOD LH PERFORMANCE H22	1
15	402470	DECAL, CONSOLE 46" EURO	2
16	402469	DECAL, ENGINE 20 HP KOHLER	2
17	402464	DECAL, PERFORMANCE FENDER	1
18	402465	DECAL, FENDER AWS EURO & LF	1
19	402466	DECAL, GRILLE NOMA EURO	1

www.emc-motocenter.com

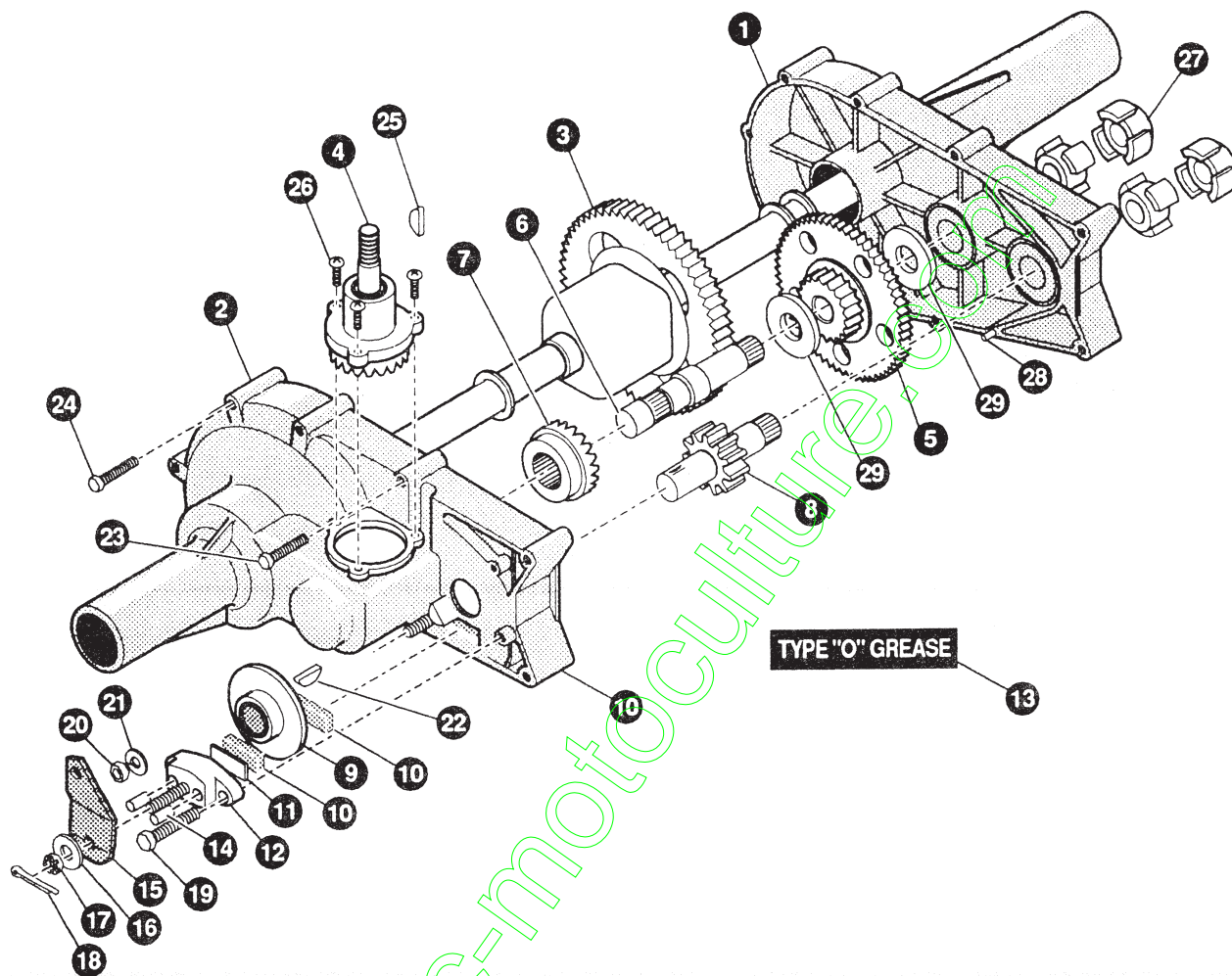
TREAD PATTERNS



TIRE SIZE	"A"	"B"	"C"	"D"	"E"
11 X 4.00 - 5	42295	319679			
13 X 5.00 - 6	41060	319680			
15 X 6.00 - 6	39830	316702	301140	313952	
16 X 4.80 - 8		305035			
16 X 6.50 - 8	41081	319682		314539	
18 X 6.50 - 8		42091			
18 X 8.50 - 8	319683	317400			
18 X 9.50 - 8	41106	316701		313950	
20 X 8.00 - 8	319685	319684	57164	314584	331606
20 X 10.00 - 8	58276	319686		313654	
20 X 10.00 - 10	55893	319687			
23 X 9.50 - 12	53655	319690	319689	314370	



Key #	Part #	Description
	310227	HYDROSTATIC PUMP (COMPLETE)
	313306	OVERHAUL SEAL KIT (CONTAINS KEY NO.'S 1-9, 13 AND 14)
1		RING-RETAINING
2		SPACER
3		SEAL-LIP
4		RING-RETAINING
5		SEAL-LIP
6		SEAL-LIP
7		SEAL-LIP
8		GASKET-CENTER SECTION
9		O-RING
10	313305	BY-PASS VALVE KIT- COMPLETE (INCL. KEY NO.'S 11-15)
11		SPRING-HELICAL COMP
12		BY-PASS SPOOL
13		O-RING
14		O-RING
15		PLUG-BY-PASS

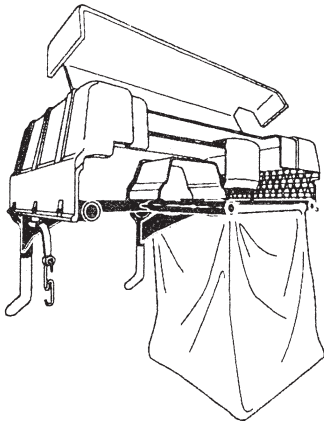


- | | | | | | |
|-----|--------|----------------------|-----|--------|---------------------|
| 1. | 324090 | HOUSING HALF LH | 16. | 323684 | WASHER, FLAT |
| 2. | 324092 | HOUSING HALF RH | 17. | 323691 | NUT, CASTLE |
| 3. | 324093 | GEAR, DIFFERENTIAL | 18. | 323671 | PIN, COTTER |
| 4. | 324095 | SHAFT, INPUT | 19. | 323711 | BOLT, HEX W/PATCH |
| 5. | 324096 | GEAR | 20. | 323650 | NUT, HEX |
| 6. | 323656 | SHAFT DRIVE | 21. | 323649 | WASHER, SPRING LOCK |
| 7. | 323655 | GEAR, DRIVE PINION | 22. | 323692 | KEY, HI-PRO |
| 8. | 323660 | SHAFT, PINION | 23. | 323677 | BOLT, HEX SELF-TAP |
| 9. | 323663 | DISC, BRAKE | 24. | 323678 | BOLT, HEX SELF-TAP |
| 10. | 323685 | PUCK, BRAKE | 25. | 323688 | KEY, HI-PRO |
| 11. | 323687 | PLATE, PUCK | 26. | 329832 | SCREW, HEX W/PATCH |
| 12. | 324092 | BRAKE, YOKE | 27. | 323661 | COUPLING |
| 13. | 324089 | TYPE "O" GREASE | 28. | 323699 | PIN, ROLL |
| 14. | 323681 | PIN, BRAKE ACTUATING | 29. | 329833 | WASHER, FLAT |
| 15. | 323665 | ARM, BRAKE ACTUATOR | | | |

www.emc-motoculture.com

Contact the dealer where your tractor was purchased for the available accessories. If you are unable to contact the dealer, write to the address on the front cover of this manual.

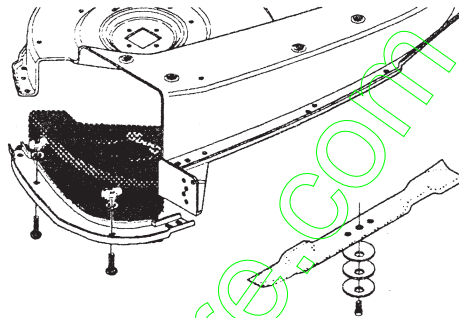
Euro Lawn Tractor



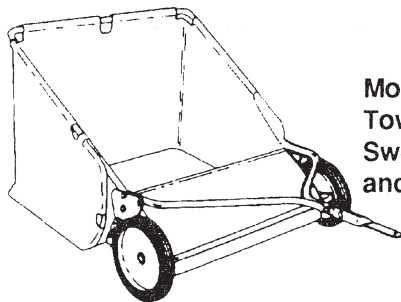
Model # 5708-14
Grass Collector for
43" decks only

For heavy duty grass
collection order
Model # 5709-08 Air
Assist

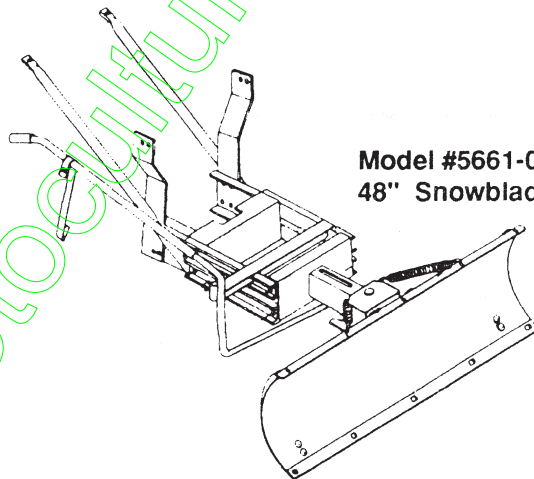
Model # 5708-34
Grass Collector for
46" decks only



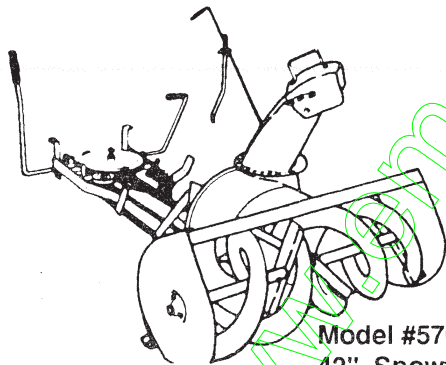
Model # 5717-00
Mulching Kit
(40,42&43" Deck)



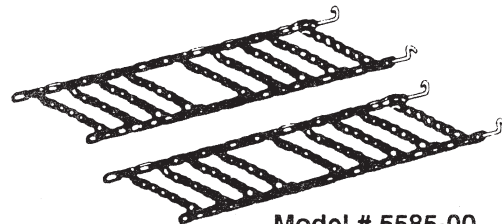
Model # 5648-16
Tow behind Lawn
Sweeper for grass
and leaves



Model #5661-07
48" Snowblade



Model #5705-05
42" Snowthrower for
heavy snowfall



Model # 5585-00
Tire Chains - 20" x 8.0" tires
Model # 5706-00
Tire Chains - 20" x 10.0" tires

OTHER ACCESSORIES

Model	Description
5672-01	Wheel Weights - Front - 1 pr. w/mtg. hdw. - Fits 15" tires
5673-02	Wheel Weights - Rear - 1 pr. w/mtg. hdw. - Fits 18" & 20" tires
5709-04	Rear Wheel Box
316608	43" High lift blade for bagging or side discharge (requires 2)
325762	43" Mulching blade (requires 2)
317071	46" High lift blade for bagging or side discharge (requires 2)

TWO YEAR LIMITED WARRANTY

For two (2) years from date of purchase by the first consumer for residential use (thirty (30) days commercial use), NOMA Outdoor Products Incorporated warrants that it will replace free of charge, including labor, any original part of any NOMA Outdoor Products Incorporated product found to be defective by any authorized Service Dealer or the factory, except the battery which is warranted for ninety (90) days from date of purchase.

This warranty does not cover engine, transmission, transaxle or differential (**these items are covered by their manufacturer's own warranty**). This warranty does not cover parts that have failed due to normal wear or parts that have failed subject to misuse or abuse. Transportation of the unit or part to and from an authorized Service Dealer or factory is the responsibility of the owner.

A step by step explanation as to what procedure should be followed for this warranty is:

1. If a part becomes defective, contact the store where the unit was purchased for the name and address of the authorized Service Dealer nearest to you.
2. If you cannot locate an authorized Service Dealer, write Service Department of NOMA Outdoor Products Incorporated for the name and address of the authorized Service Dealer in your area or call the Service Department at 1-800-247-7464.
3. Return the defective product, along with proof of purchase to such authorized Service Dealer for replacement of any defective part where covered by this warranty.

There is no other express warranty. Implied warranties, including those of merchantability and fitness for a particular purpose are limited to two (2) years from date of purchase. Liability for incidental or consequential damages are excluded.

Some states do not allow limitations on how long an implied warranty lasts, so the above limitation may not apply to you. Some states do not allow the exclusion of incidental or consequential damages, so the above exclusion may not apply to you. This warranty gives you specific legal rights, and you may have other rights which vary from state to state.

NOMA Outdoor Products Incorporated **Caller 8000** **Jackson, TN 38308-8000**

UNIT PARTS AND SERVICE

Fill in and mail the registration card packed with the unit. For service other than covered in this manual, contact an authorized service dealer. A nationwide parts and service organization has been established to provide locally available parts and service. A list of authorized parts distributors has been included in this manual. When ordering repair parts, always give the following information: 1. The Part Name; 2. The Part Number; 3. The Quantity desired; 4. The Full (eight digit) Model Number of the unit. The model number will be found on a plate attached to the unit.



Look for this symbol. **It means - ATTENTION! BECOME ALERT! A HAZARD TO OPERATOR, BYSTANDER, PROPERTY OR EQUIPMENT MAY EXIST.**

NOMA Outdoor Products Incorporated
Caller 8000
Jackson, TN 38308-8000

Part No. 332781

11/18/93