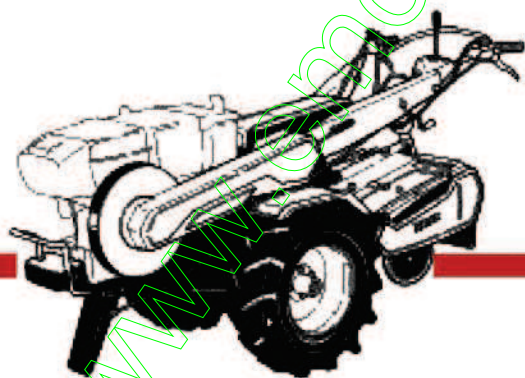




PIECES DETACHEES

Motoculteur



KA700

Chassis



Yves Béal 21, Av. de l'Agriculture - B.P. 10
Z.I. du Breuil 63014 Clermont-Ferrand Cedex 2
Tél. 04 73 91 93 51 Téléphone : 04 73 90 23 11
www.yvesbeal.fr Email : info@yvesbeal.fr
R.C. B 304 973 886 - SIREN 304 973 886

1300-098-0110-0 - fév 82

03-000223-050228

HOW TO USE THIS PARTS CATALOGUE

CATALOGUE CONSTRUCTION

Ref. No. Ref. N°	Parts No. Pieces N°	Description Designation	Q'ty Quant.	Remarks Remarques
A	B	C	D	E

A. Ref. No. : It is a reference number to find parts in the drawings.

B. Parts No. : Every part has its own 12-digit code number with which it is computer-controlled. Parts which have "V" at their code numbers' head are purchasable in the market.

C. Description: Names, sizes, functions and other meanings of parts are found in this column. "LH" and "RH" of parts are given by facing to the tractor-moving-forward direction or looking at them mounted on the tractor. Components of an assembled part (ASS'Y or SET) are listed set in from ASS'Y or SET name and headed with ". " as in the following example:

(Example)

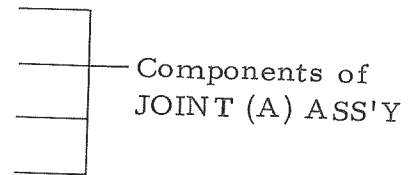
JOINT (A) ASS'Y

. YOKE (A), SPLINE

. JOINT, CROSS

. YOKE (B), SPLINE

. RING, SNAP/C TYPE 20



Abbreviations which are used in this column are explained in Table page 2

D. Q'ty: This column specifies the quantity of a part required for one tractor. "AR" is the abbreviation of "AS REQUIRED".

E. Remarks: Additional notices are said here if any.

Explanation of symbols:

" ★ " shows parts made to order.

" △ " shows parts not sold as a single part.

REQUESTS ON ORDERING PARTS:

Code No., Part Name, and Quantity should be typed clearly and correctly on your order sheet without fail.

Especially wrong code numbers which are computer-controlled may result in wrong delivery of parts.

ABBREVIATIONS

ABBREVIATIONS	ORIGINAL WORDS	ABBREVIATIONS	ORIGINAL WORDS
ADJ	ADJUST, ADJUSTING	NR	NEEDLE ROLLER
ASSY	ASSEMBLY	P=	PITCH
CONN	CONNECTING	PRESS	PRESSURE
CRANK	CRANKSHAFT	PTO	POWER TAKE OFF
CYL	CYLINDER	R	REAR
DEL	DELIVERY	RB	RADIAL BALL
EXH	EXHAUST	RH	RIGHT HAND
F	FRONT	SP	SPRING
HI	HIGH	T	TEETH
LH	LEFT HAND	TB	THRUST BALL
LW	LOWER	UP	UPPER
NO	NUMBER		

COMMENT LIRE LE CATALOGUE

AGENCEMENT DU CATALOGUE

Ref. No. Ref. N°	Parts No. Pièces N°	Description Designation	Q'ty Quant.	Remarks Remarques
A	B	C	D	E

A. Réf. N° : C'est un numéro de référence pour trouver les pièces dans les plans.

B. Pièces N° : Chaque pièce possède son propre numéro de code à 12 chiffres avec lequel elle peut être contrôlée par ordinateur.
Les pièces comportant un "V" dans leur numéro de code en tête sont procurable sur le marché.

C. Désignation: La désignation, les dimensions, les fonctions et autres renseignements sur la pièces sont indiqués dans cette colonne.
Quand les côtés "Gauche" et "Droit" des pièces sont spécifiés, on doit alors regarder dans la direction d'avancement en avant du tracteur ou bien en étant monté sur le tracteur.
Les pièces constituant d'un ensemble (ENSEMBLE ou JEU) sont énumérées sous la désignation de l'ENSEMBLE ou du JEU en question et précédées d'un " " comme dans l'exemple suivant:

(Exemple):

ENSEMBLE ROUE DROITE

. JANTE 350B x 100C

. PNEU 400-10

. CHAMBRE A AIR 400-10

} Pièces
} composantes
} de l'ENSEMBLE
} de ROUE DROITE

Les abréviations utilisées dans cette colonne sont expliquées dans le tableau à la page 2

D. Quant.: Cette colonne spécifie les quantités d'une pièce requise pour chaque section donnée.
"AR" est une abréviation signifiant "SUIVANT LES BESOINS".

E. Remarques: On trouvera ici des observations utiles s'il y a lieu.

Explications des symboles:

- " ★ " indique des pièces fabriquées sur commande.
- " △ " indique des pièces qui ne sont pas vendues séparément.

INDICATIONS POUR LA COMMANDE DES PIÈCES:

Le N° de code, la désignation de la pièce, et la quantité voulue devront être indiqués clairement à la machine à écrire sans erreur ou omission sur la feuille de commande.

On notera en particulier que des numéros de code erronés enregistrés à la commande par ordinateur risquent d'entraîner des erreurs à la fourniture des pièces.

www.emc-motoculture.com

CONTENTS
TABLE DES MATIERES

CHASSIS		Page
Fig. 19	FRONT FRAME Longeron	1
Fig. 20	TRANSMISSION CASE Coquille	3
Fig. 21	BELT DRIVE (No. 1 ~ 11900) Courroie intermediaire	7
Fig. 22	BELT DRIVE (No. 11901 ~) Courroie intermediaire	11
Fig. 23	TRANSMISSION GEAR (1) Reducteur (1)	17
Fig. 24	TRANSMISSION GEAR (2) Reducteur (2)	19
Fig. 25	SHIFTER Fourchettes	21
Fig. 26	HANDLE FRAME Mancherons	25
Fig. 27	CONTROL SYSTEM Commandes	29
Fig. 28	FENDER Garde-boue	33
Fig. 29	WHEEL Roues	35
Fig. 30	COUNTER CHAIN CASE Chaine intermediaire	37
Fig. 31	ROTARY CHAIN CASE Transmission de rotobineuse	39
Fig. 32	ROTARY FRAME Enveloppe de rotobineuses	43
Fig. 33	REAR WHEEL Roue de profondeur	47
Fig. 34	ROTARY PIPE Fraise	51
Fig. 35	REAR HITCH Attelage	55
Fig. 36	TOOLS Outils	57
Fig. 37	MARKS Etiquette	59

www.emc-motoculture.com

CHASSIS

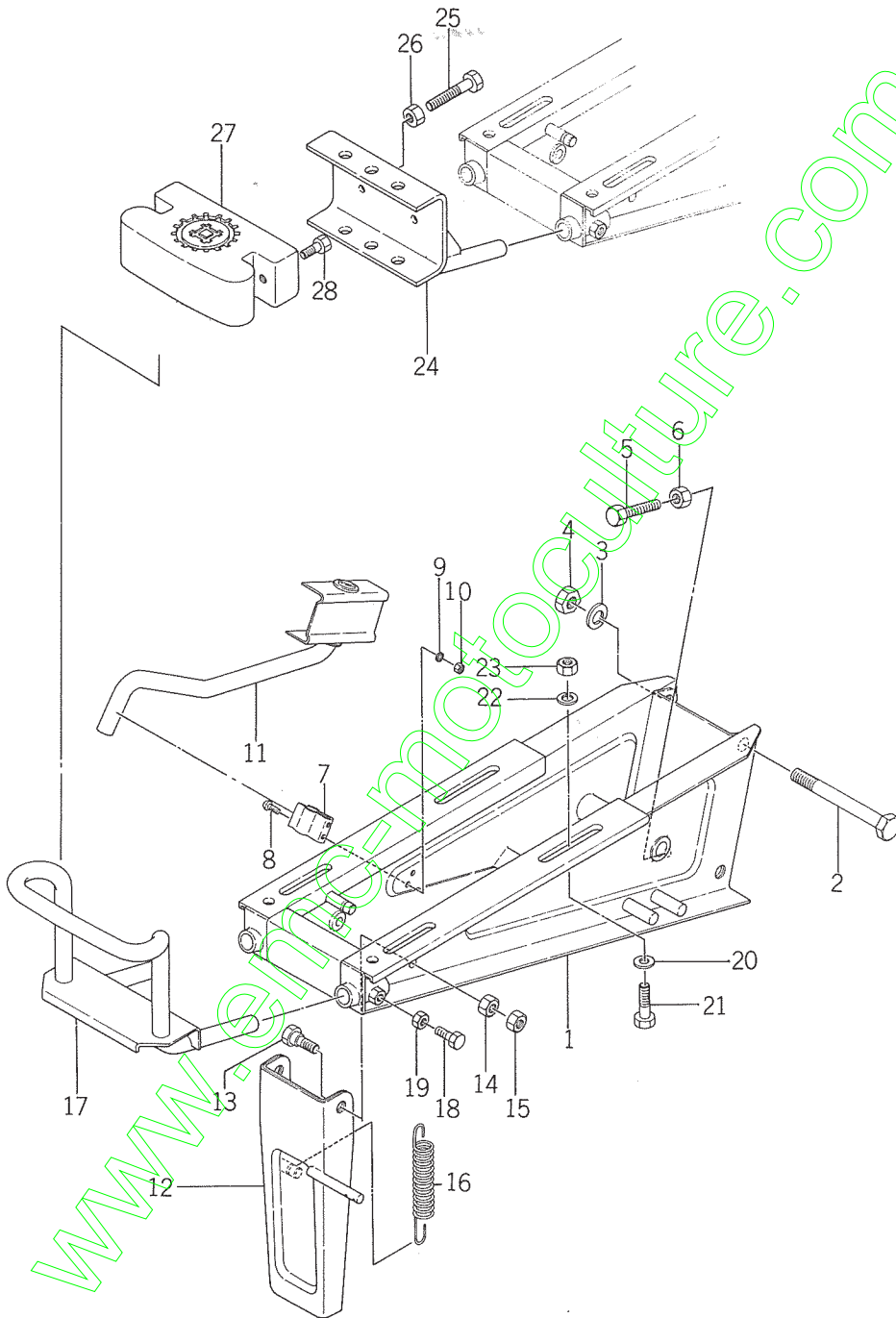
www.emc-motoculture.com

www.emc-motoculture.com

www.emc-motoculture.com

Fig.19 FRONT FRAME

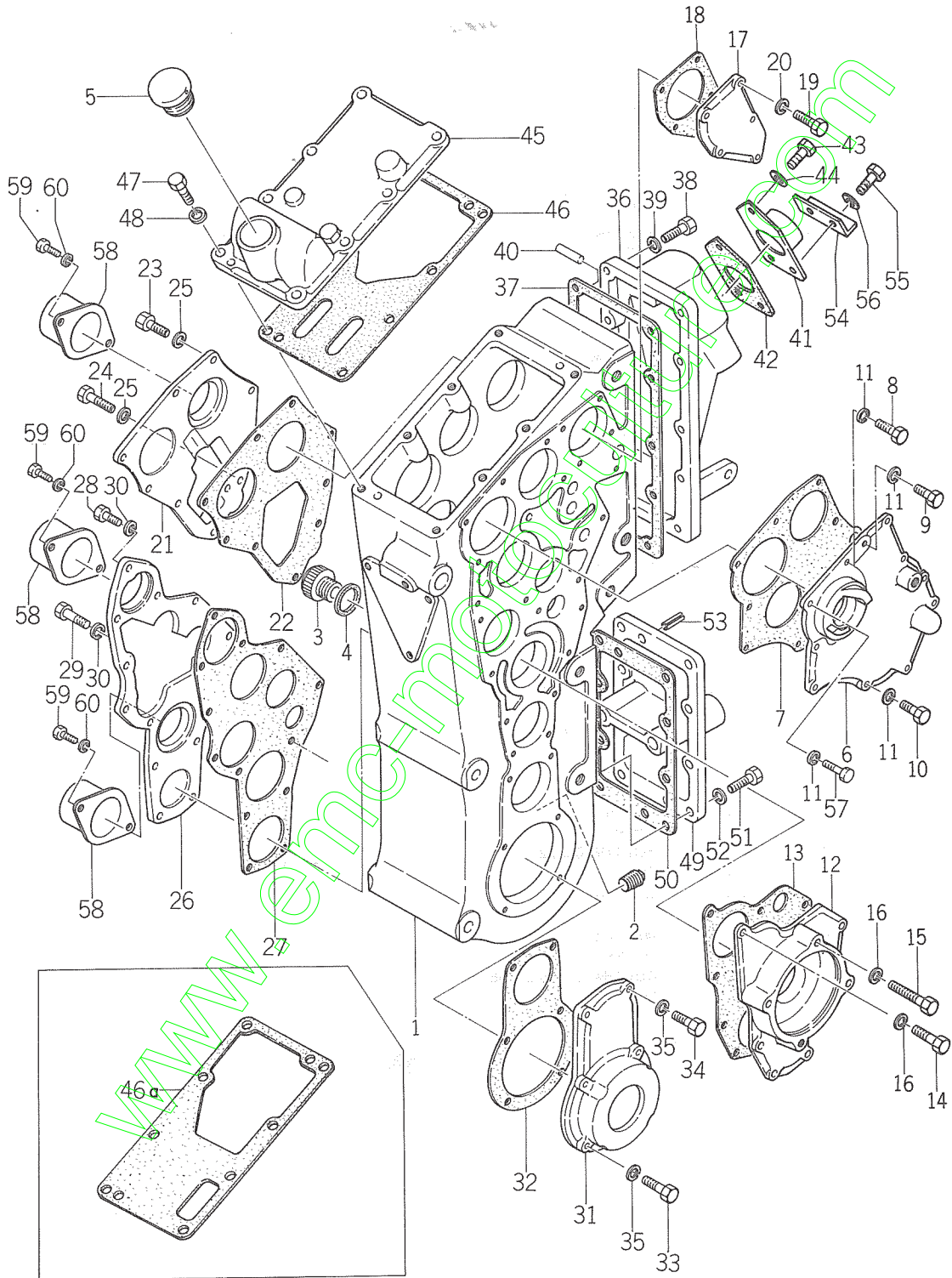
Longeron



Ref.No. Réf.Nº	Parts No. Pièces Nº.	Description Désignation	Q'ty Quant	Remarks Remarques
19- 1	1366-101-1000-0	FRAME, F. Longeron	1	
19- 2	1333-101-0010-0	BOLT, F. FRAME SET Vis	2	
19- 3	V401-160-0120-0	WASHER, SP/M12 Rondelle frein	2	
19- 4	V300-460-0120-0	NUT/M12 Ecrou	2	
19- 5	W201-261-2045-0	BOLT/M12 x 45 S=45 Vis	1	
19- 6	V300-260-0120-0	NUT/M12 Ecron	1	
19- 7	1366-101-0010-0	HOOK, STAND BAR Bride	1	
19- 8	V111-166-0012-0	SCREW/M6 x 12 Vis	2	
19- 9	V401-160-0060-0	WASHER, SP/M6 Rondelle frein	2	
19-10	V300-260-0060-0	NUT/M6 Ecrou	2	
19-11	1366-101-2000-0	BAR, STAND Elevateur - declancheue rapide	1	
19-12	1366-106-1000-0	STAND Bequille	1	
19-13	1366-106-0010-0	BOLT/M12 x 37 7T Vis	2	
19-14	V300-260-0120-0	NUT/M12 Ecrou	2	
19-15	V302-260-0120-0	NUT/M12 Ecrou	2	
19-16	1360-106-0010-0	SPRING, STAND Ressort	1	
19-17	1366-111-1000-0	BUMPER Pore-chocs	1	
19-18	V201-261-0022-0	BOLT/M10 x 22 Vis	2	
19-19	V302-260-0100-0	NUT/M10 Ecrou	2	
19-20	1325-301-3030-0	COLLAR Rondelle	4	
19-21	V201-261-2040-0	BOLT/M12 x 40 Vis	4	
19-22	V401-160-0120-0	WASHER, SP/M12 Rondelle frein	4	
19-23	V300-260-0120-0	NUT/M12 Ecrou	4	
19-24	1366-111-2000-0	HITCH, F Attelage av	1	★
19-25	V201-261-0022-0	BOLT/M10 x 22 Vis	2	★
19-26	V302-260-0100-0	NUT/M10 Ecrou	2	★
19-27	1366-931-0020-0	WEIGHT, F.B. Contrepoids	1	
19-28	W201-261-2055-0	BOLT/M12 x 55 S = 55 Vis	2	

Fig.20 TRANSMISSION CASE

Coquille



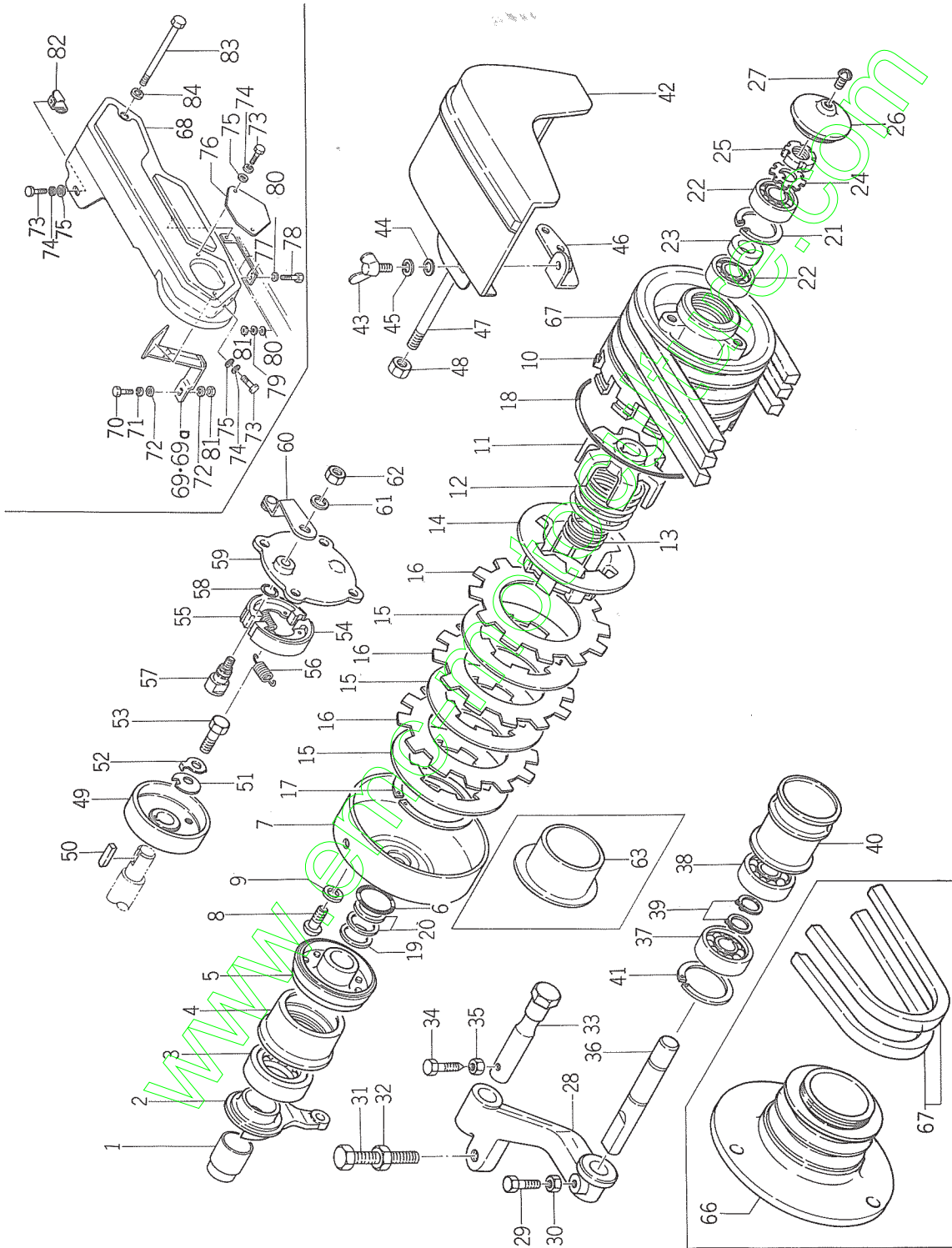
Ref.No. Réf.Nº.	Parts No. Pièces Nº.	Description Désignation	Q'ty Quant	Remarks Remarques
20- 1	1366-216-0010-0	CASE, MAIN GEAR Boitier de boîte de vitesse	1	No. 1~1800
20- 1a	1366-216-0011-0	CASE, MAIN GEAR Boitier de boîte de vitesse	1	No. 1801~
20- 2	V781-300-0008-0	PLUG, DRAIN/PT 1/2 Bouchon de vidange	1	
20- 3	1317-216-0110-0	LEVEL, OIL Bouchon	1	
20- 4	1317-216-0120-0	PACKING, OIL LEVEL Joint	1	
20- 5	1366-216-1000-0	CAP, OIL/30 Bouchon de remplissage	1	No. 1~1800
20- 5a	7954-205-1000-0	CAP, OIL/30 Bouchon de remplissage	1	No. 1801~
20- 6	1366-216-0020-0	METAL, CLUTCH Coquille d'embroyage	1	No. 1~1800
20- 6a	1366-216-0021-0	METAL, CLUTCH Coquille d'embroyage	1	No. 1801~
20- 7	1366-216-0030-0	PACKING, CLUTCH METAL Joint	1	
20- 8	V200-460-6022-0	BOLT/M6 x 22 9T Vis	1	
20- 9	V200-460-6014-0	BOLT/M6 x 14 9T Vis	1	
20-10	V200-460-6016-0	BOLT/M6 x 16 9T Vis	8	
20-11	V401-160-0060-0	WASHER, SP/M6 Rondelle frein	11	
20-12	1366-216-0050-0	METAL, BRAKE Cartor de frein	1	
20-13	1366-216-0060-0	PACKING, BRAKE Joint	1	
20-14	V200-460-6016-0	BOLT/M6 x 16 9T Vis	7	
20-15	V200-460-6045-0	BOLT/M6 x 45 9T Vis	3	
20-16	V401-160-0060-0	WASHER, SP/9T Rondelle frein	10	
20-17	1366-216-0070-0	METAL, ROTARY CHANGE Couvercle	1	
20-18	1366-216-0080-0	PACKING, CHANGE METAL Joint	1	
20-19	V200-460-6016-0	BOLT/M6 x 16 9T Vis	5	
20-20	V401-160-0060-0	WASHER, SP/M6 Rondelle frein	5	
20-21	1370-216-0010-0	METAL, ROTARY COUNTER Couvercle	1	
20-22	1366-216-0100-0	PACKING, ROTARY COUNTER Joint	1	
20-23	V200-460-6016-0	BOLT/M6 x 16 9T Vis	8	
20-24	V200-460-6030-0	BOLT/M6 x 30 9T Vis	1	
20-25	V401-160-0060-0	WASHER, SP/M6 Rondelle frein	9	
20-26	1366-216-0111-0	METAL, COUNTER Couvercle	1	
20-27	1366-216-0120-0	PACKING, COUNTER METAL Joint	1	
20-28	V200-460-6016-0	BOLT/M6 x 16 9T Vis	11	
20-29	V200-460-6022-0	BOLT/M6 x 22 9T Vis	2	
20-30	V401-160-0060-0	WASHER, SP/M6 Rondelle frein	13	
20-31	1360-216-0100-2	METAL, WHEEL Couvercle de reducteur	2	
20-32	1360-216-0110-0	PACKING, WHEEL METAL Joint	2	
20-33	V200-460-6020-0	BOLT/M6 x 20 9T Vis	8	
20-34	V200-460-6016-0	BOLT/M6 x 16 9T Vis	4	
20-35	V401-160-0060-0	WASHER, SP/M6 Rondelle frein	12	

Ref.No. Réf.Nº.	Parts No. Pièces Nº.	Description Désignation	Q'ty Quant	Remarks Remarques
20-36	1370-216-0020-0	METAL, CHANGE Couvclde de boîte de vitesse	1	No. 1~12550
20-36a	1370-216-0021-0	METAL, CHANGE Couvclde de boîte de vitesse	1	No. 12551~
20-37	1366-216-0140-0	PACKING, CHANGE METAL Joint	1	
20-38	V201-260-8028-0	BOLT/M8 x 28 Vis	10	
20-39	V401-160-0080-0	WASHER, SP/M8 Rondelle frein	10	
20-40	V520-200-6020-0	PIN/6 x 20 Goupille	1	
20-41	1366-216-0150-0	COVER, CHANGE METAL Couvercle	1	
20-42	1366-216-0160-0	PACKING, METAL COVER Joint	1	
20-43	V200-260-6016-0	BOLT/M6 x 16 Vis	1	
20-44	V401-160-0060-0	WASHER, SP/M6 Rondelle frein	1	
20-45	1370-216-0030-0	COVER, HEAD Couvercle	1	
20-46	1366-216-0180-0	PACKING, HEAD COVER Joint	1	No. 1~16975
20-46a	1366-216-0182-0	PACKING, HEAD COVER Joint	1	No. 16976~
20-47	V201-260-8022-0	BOLT/M8 x 22 Vis	8	
20-48	V401-160-0080-0	WASHER, SP/M8 Rondelle frein	8	
20-49	1366-216-0200-0	COVER, R Couvercle ar	1	No. 1~1800
20-49a	1366-216-0201-0	COVER, R Couvercle ar	1	No. 1801~
20-50	1366-216-0210-0	PACKING, R. COVER Joint	1	No. 1~1800
20-50a	1366-216-0211-0	PACKING, R. COVER Joint	1	No. 1801~
20-51	V201-260-8020-0	BOLT/M8 x 20 Vis	10	
20-52	V401-160-0080-0	WASHER, SP/M8 Rondelle frein	10	
20-53	V580-140-8010-0	PIN, SPRING/8 x 10 Goupille elastique	2	
20-54	1370-216-0040-0	COVER, BOOT Bavette	1	
20-55	V200-260-6020-0	BOLT/M6 x 20 Vis	2	
20-56	V401-160-0060-0	WASHER, SP/M6 Rondelle frein	2	
20-57	V200-460-6020-0	BOLT/M6 x 20 9T Vis	1	
20-58	1365-216-0040-3	CAP, SHAFT/30 x 50 Embout	3	} No. 5301~
20-59	V200-260-6010-0	BOLT/M6 x 20 Vis	5	
20-60	V401-160-0060-0	WASHER, SP/M6 Rondelle frein	5	

SERVICE MEMO

www.emc-motoculture.com

Fig.21 BELT DRIVE (No.1 ~ 11900)
 Courroie intermediaire



Ref.No. Réf.Nº.	Parts No. Pièces Nº.	Description Désignation	Q'ty Quant	Remarks Remarques
21- 1	1341-216-0120-0	BUSH, METAL Coussinet	1	
21- 2	1366-216-0040-0	CAM, CLUTCH Came	1	
21- 3	1326-216-0170-0	BEARING, RB/S51108Z Roulement	1	
21- 4	1341-216-0140-0	COVER, CAM Couvercle	1	
21- 0-1	1341-200-0510-0	CLUTCH, MAIN ASSY Embrayage ensemble	1	
21- 5	1341-201-3000-0	• BRACKET Support	1	
21- 6	1326-201-0110-0	• O-RING/25 x 29 x 2 Joint torique	1	
21- 7	1341-201-2000-0	• COVER, CLUTCH CASE Boitier d'embrayage	1	
21- 8	V110-165-0010-0	• SCREW/M5 x 10 Vis	6	
21- 9	V401-160-0050-0	• WASHER, SP/M5 Rondelle frein	6	
21-10	1341-201-0010-1	• PULLEY, MAIN SHAFT Poulie menee	1	No. 1~9900
21-11	1341-201-1000-0	• BRACKET, CLUTCH Support	1	
21-12	1341-201-0020-0	• SPRING, PRESS LARGE Ressort	1	
21-13	1341-201-0040-0	• SPRING, PRESS SMALL Ressort	1	
21-14	1335-201-0040-0	• CAP, SPRING Capuchon de ressort	1	
21-15	1335-201-0020-0	• PLATE, PRESS Plaque de pression	3	
21-16	1335-201-0050-0	• FACING Garniture d'embrayage	3	
21-17	1326-201-0090-0	• RING, STOP/88 Collet d'axe	1	
21-18	1326-201-0100-0	• O-RING Joint torique	1	
21-19	1326-201-0150-0	• SHIM A Cale	AR	
21-20	1326-201-0160-0	• SHIM B Cale	AR	
21-21	V705-140-0470-0	RING, SNAP/C47 Collet d'axe	1	
21-22	V600-150-6204-0	BEARING, RB/6204 2NS Roulement radial	2	
21-23	1326-217-0020-0	COLLAR, BEARING Collier	1	
21-24	V671-400-0040-0	WASHER, ADAPTER/AW04 Rondelle	1	
21-25	V670-200-0040-0	NUT, ADAPTER/AN04 Ecrou	1	
21-26	1341-201-0030-4	CAP, PULLEY Capuchon	1	
21-27	V111-168-0010-0	SCREW/M8 x 10 Vis	1	
21-28	1366-202-0010-0	ARM, TENSION Bras de tension	1	
21-29	V201-260-8025-0	BOLT/M8 x 25 Vis	1	Point angle 90°
21-30	V302-260-0080-0	NUT/M8 Ecrou	1	
21-31	W201-261-2080-0	BOLT/M12 x 80 S = 80 Vis	1	
21-32	V302-260-0120-0	NUT/M12 Ecrou	1	
21-33	1341-202-0040-0	PIN, TENSION Axe de tendeur	1	
21-34	V201-260-8030-0	BOLT/M8 x 30 Vis	1	Point angle 90°
21-35	V302-260-0080-0	NUT/M8 Ecrou	1	
21-36	1341-202-0020-0	PIN, TENSION Axe de tendeur	1	No. 1~8800
21-36a	1366-202-0020-0	PIN, TENSION Axe de tendeur	1	No. 8801~

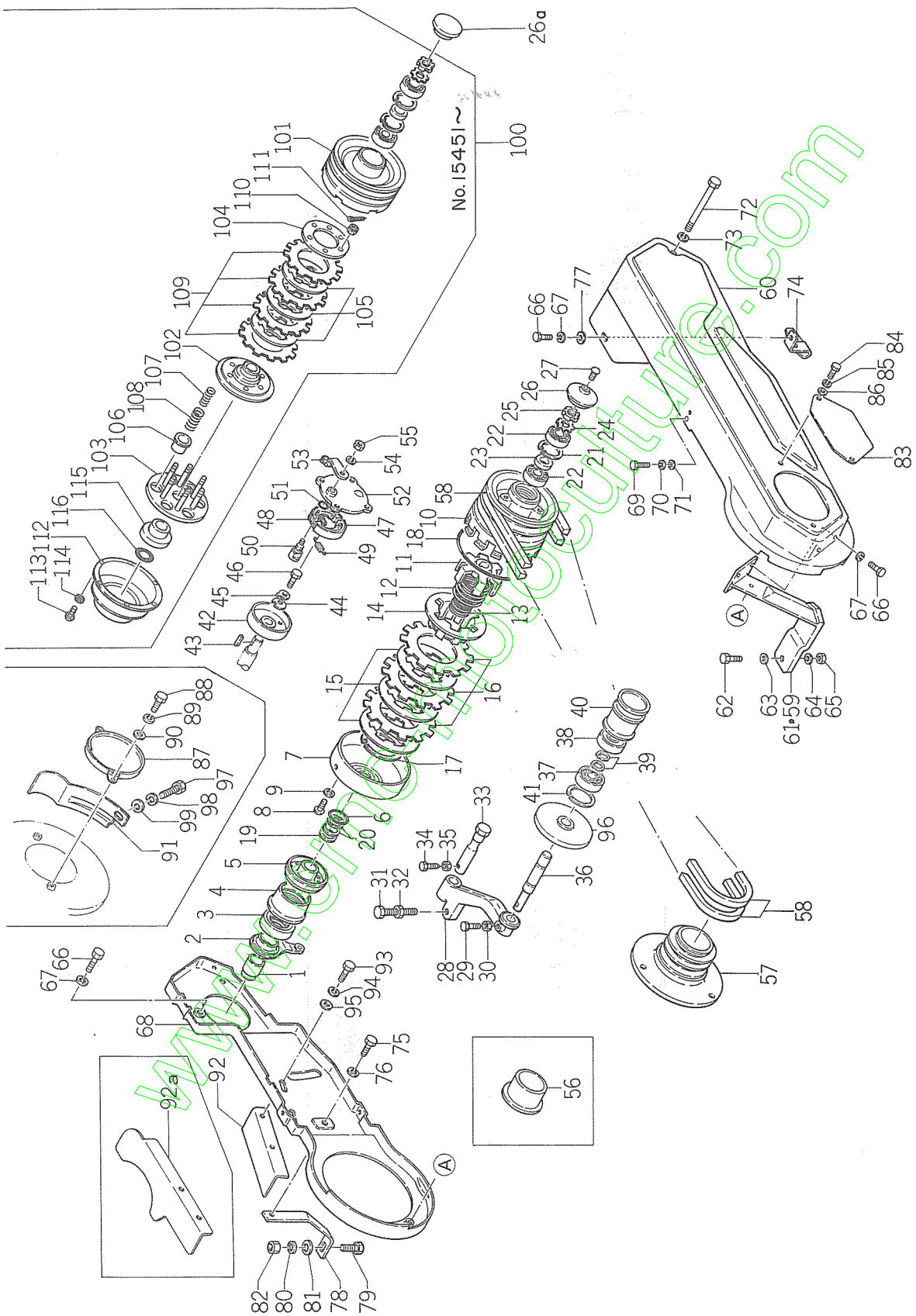
Ref.No. Réf.Nº.	Parts No. Pièces Nº.	Description Désignation	Q'ty Quant	Remarks Remarques
21-37	V600-110-6203-0	BEARING, RB/6203 Roulement radial	1	
21-38	V600-140-6203-0	BEARING, RB/6203RS Roulement radial	1	
21-39	V704-140-0170-0	RING, SNAP/C 17 Collet d'axe	2	
21-40	1341-202-0010-2	PULLEY, TENSION Galet tendur	1	
21-41	V705-140-0400-0	RING, SNAP/C 40 Collet d'axe	1	
21-42	1366-611-1000-0	COVER, BELT Carter de courroies	1	No. 1~3300
21-43	V270-160-8018-0	BOLT, WING/M8 x 18 Vis a oreilles	1	
21-44	V413-160-0080-0	WASHER/M8 Rondelle	1	
21-45	V401-160-0080-0	WASHER, SP/M8 Rondelle frein	1	
21-46	1366-611-2000-0	STAY, BELT COVER Support	1	No. 1~3300
21-47	1341-611-0010-2	STAY, BELT COVER B Support	1	
21-48	V302-260-0100-0	NUT/M10 Erou	1	
21-49	1341-220-1000-0	DRUM, BRAKE Tambour	1	
21-50	1338-220-0020-0	KEY Clavette	1	
21-51	1341-220-0070-0	WASHER/M6 Rondelle	1	
21-52	1341-220-0060-0	WASHER, LOCK Rondelle frein	1	
21-53	V200-260-6016-0	BOLT/M6 x 16 Vis	1	
21-54	1323-220-2000-0	SHOE, BRAKE LH Manchoire	1	
21-55	1323-220-3000-0	SHOE, BRAKE RH Manchoire	1	
21-56	1323-220-0120-0	SPRING, BRAKE SHOE Ressort	2	
21-57	1334-218-0090-0	CAM, BRAKE Came	1	
21-58	V720-101-9009-0	O-RING/P9 Joint torique	1	
21-59	1326-216-1000-2	COVER, BRAKE METAL Flasque	1	
21-60	1366-401-3000-0	ARM, BRAKE Lever de frein	1	
21-61	V401-160-0080-0	WASHER, SP/M8 Rondelle frein	1	
21-62	V302-260-0080-0	NUT/M8 Erou	1	
21-63	1366-917-0010-0	PULLEY/75 Poulie	1	★
21-63-1	1366-917-0020-0	PULLEY B/90 Poulie	1	★
21-63-2	1366-917-0030-0	PULLEY B/100 Poulie	1	★
21-66	1370-922-0010-0	PULLEY, ENGINE/84 Poulie motrice	1	{ No. 1~8800 K. No. 1~7650
21-66a	1370-922-0011-0	PULLEY, ENGINE/84 Poulie motrice	1	{ No. 8801~ K. No. 7651~
21-67	V812-000-0600-0	BELT, V/B60 Courroie trapezoidale	2	
21-68	1366-612-1000-0	COVER, BELT Carter de courroies	1	No. 3301~11900
21-69	1366-612-2000-0	BRACKET, COVER Support	1	No. 3301~8800
21-69a	1366-612-2001-0	BRACKET, COVER Support	1	No. 8801~
21-70	V201-261-2040-0	BOLT/M12 x 40 Vis	1	
21-71	V401-160-0120-0	WASHER, SP/M12 Rondelle, frein	1	No. 3301~11900
21-72	V413-160-0120-0	WASHER/M12 Rondelle	2	

Ref.No. Réf.Nº.	Parts No. Pièces Nº.	Description Désignation	Q'ty Quant	Remarks Remarques
21-73	V201-260-8014-0	BOLT/M8 x 14 Vis	6	No. 3301~11900
21-74	V401-160-0080-0	WASHER, SP/M8 Rondelle frein	6	
21-75	V413-160-0080-0	WASHER/M8 Rondelle	4	} No. 3301~11900
21-76	1366-612-0010-0	COVER, PULLEY Carter de poulie	1	
21-77	1366-612-0020-0	STAY, COVER A Support	1	No. 3301~8800
21-77a	1366-612-0021-0	STAY, COVER A Support	1	No. 8801~11900
21-78	V201-261-2036-0	BOLT/M12 x 36 Vis	1	
21-79	V401-160-0120-0	WASHER, SP/M12 Rondelle frein	1	} No. 3301~11900
21-80	V413-160-0120-0	WASHER/M12 Rondelle	2	
21-81	V300-260-0120-0	NUT/M12 Ecrou	1	
21-82	1366-612-0030-0	STAY, COVER B Support	1	No. 3301~8800
21-82a	1366-612-0031-0	STAY, COVER B Support	1	No. 8801~11900
21-83	V201-261-0185-0	BOLT/M10 x 185 Vis	1	} No. 3301~11900
21-84	V401-160-0100-0	WASHER, SP/M10 Rondelle frein	1	

www.emc-motoculture.com

Fig.22 BELT DRIVE (No.11901 ~)

Courroie intermediaire



Ref.No. Réf.Nº	Parts No. Pièces Nº.	Description Désignation	Q'ty Quant	Remarks Remarques
22- 1	1341-216-0120-0	BUSH, METAL Cousinet	1	
22- 2	1366-216-0040-0	CAM, CLUTCH Came	1	
22- 3	1326-216-0170-0	BEARING, RB/S51108Z Roulement	1	
22- 4	1341-216-0140-0	COVER, CAM Couvercle	1	
22- 0-1	1341-200-0510-0	CLUTCH, MAIN ASSY Embrayage ensemble	1	
22- 5	1341-201-3000-0	•BRACKET Support	1	
22- 6	1326-201-0110-0	•O-RING/25 x 29 x 2 Joint torique	1	
22- 7	1341-201-2000-0	•COVER, CLUTCH CASE Boitier d'embrayage	1	No. 15450
22- 8	V111-165-0010-0	•SCREW/M5 x 10 Vis	6	
22- 9	V401-260-0050-0	•WASHER, SP/M5 Rondelle frein	6	
22-10	1341-201-0011-0	•PULLEY, MAIN SHAFT Poulie menee	1	No. 9901~15450
22-11	1341-201-1000-0	•BRACKET, CLUTCH Support	1	
22-12	1341-201-0020-0	•SPRING, PRESS LARGE Ressort	1	
22-13	1341-201-0040-0	•SPRING, PRESS SMALL Ressort	1	
22-14	1335-201-0040-0	•CAP, SPRING Capuchon de ressort	1	
22-15	1335-201-0020-0	•PLATE, PRESS Plaque de pression	3	
22-16	1335-201-0050-0	•FACING Garniture d'embrayage	3	No. 1~15450
22-17	1326-201-0090-0	•RING, STOP/88 Collet d'axe	1	
22-18	1326-201-0100-0	•O-RING Joint torique	1	
22-19	1326-201-0150-0	•SHIM A Cale	AR	
22-20	1326-201-0160-0	•SHIM B Cale	AR	
22-21	V705-140-0470-0	RING, SNAP/C47 Collet d'axe	1	
22-22	V600-150-6204-0	BEARING, RB/6204 Roulement radial	2	
22-23	1326-217-0020-0	COLLAR, BEARING Collier	1	
22-24	V671-400-0040-0	WASHER, ADAPTER/AW04 Rondelle	1	
22-25	V670-200-0040-0	NUT, ADAPTER/AN04 Ecroû	1	
22-26	1341-201-0030-4	CAP, PULLEY Capuchon	1	No. 1~15450
22-26a	1366-201-0010-0	CAP, PULLEY Capuchon	1	No. 15451~
22-27	V111-168-0010-0	SCREW/M8 x 10 Vis	1	No. 1~15450
22-28	1366-202-0010-0	ARM, TENSION Bras de tension	1	
22-29	V201-260-8025-0	BOLT/M8 x 25 Vis	1	Point angle 90°
22-30	V302-260-0080-0	NUT/M8 Ecroû	1	
22-31	W201-261-2080-0	BOLT/M12 x 80 S = 80 Vis	1	
22-32	V302-260-0120-0	NUT/M12 Ecroû	1	
22-33	1341-202-0040-0	PIN, TENSION Axe de tendeur	1	
22-34	V201-260-8030-0	BOLT/M8 x 30 Vis	1	Point angle 90°
22-35	V302-260-0080-0	NUT/M8 Ecroû	1	
22-36	1366-202-0020-0	PIN, TENSION Axe de tendeur	1	No. 8801~

1366-201, 202, 217, 220, 613, 917
1370-216, 401, 922

Ref.No. Réf.Nº.	Parts No. Pièces Nº.	Description Désignation	Q'ty Quant	Remarks Remarques
22-37	V600-110-6203-0	BEARING, RB/6203 Roulement radial	1	
22-38	V600-140-6203-0	BEARING, RB/6203RS Roulement radial	1	
22-39	V704-140-0170-0	RING, SNAP/C 17 Collet d'axe	2	
22-40	1341-202-0010-2	PULLEY, TENSION Galet tendeur	1	
22-41	V705-140-0400-0	RING, SNAP/C 40 Collet d'axe	1	
22-42	1341-220-1000-0	DRUM, BRAKE Tambour	1	
22-43	1338-220-0020-0	KEY Clavette	1	
22-44	1341-220-0070-0	WASHER/M6 Rondelle	1	
22-45	1341-220-0060-0	WASHER, LCOK/M6 Rondelle frein	1	
22-46	V200-260-6016-0	BOLT/M6 x 16 Vis	1	
22-47	1323-220-2000-0	SHOE, BRAKE LH Manchoire	1	
22-48	1323-220-3000-0	SHOE, BRAKE RH Manchoire	1	
22-49	1323-220-0120-0	SPRING, BRAKE SHOE Ressort	2	
22-50	1334-218-0090-0	CAM, BRAKE Came	1	
22-51	V720-101-9009-0	O-RING/P9 Joint torique	1	
22-52	1326-216-1000-2	COVER, BRAKE METAL Flasque	1	
22-53	1366-401-3000-0	ARM, BRAKE Lever de frein	1	
22-54	V401-160-0080-0	WASHER, SP/M8 Rondelle frein	1	
22-55	V302-260-0080-0	NUT/M8 Erou	1	
22-56	1366-917-0010-0	PULLEY/75 Poulie	1	★
22-56-1	1366-917-0020-0	PULLEY B/90 Poulie	1	★
22-56-2	1366-917-0030-0	PULLEY B/100 Poulie	1	★
22-57	1370-922-0011-0	PULLEY, ENGINE/84 Poulie motrice	1	No. 8801~
22-58	V812-000-0600-0	BELT, V/B60 Courroie trapézoïdale	2	
22-59	1366-612-2001-0	BRACKET, COVER Support	1	No. 8801~
22-60	1366-613-2000-1	COVER, BELT A Carter de courroies	1	}
22-61	1366-613-2100-1	BRACKET, COVER Support	1	
22-62	V201-261-2035-0	BOLT/M12 x 35 Vis	1	}
22-63	V413-160-0120-0	WASHER/M12 Rondelle	1	
22-64	V401-160-0120-0	WASHER, SP/M12 Rondelle frein	1	
22-65	V300-260-0120-0	NUT/M12 Erou	1	
22-66	V201-260-8016-0	BOLT/M8 x 16 Vis	3	
22-67	V401-160-0080-0	WASHER, SP/M8 Rondelle frein	3	
22-68	1366-613-2200-1	COVER, BELT B Carter de courroies	1	
22-69	V200-260-6012-0	BOLT/M6 x 12 Vis	2	
22-70	V401-160-0060-0	WASHER, SP/M6 Rondelle frein	2	
22-71	V413-160-0060-0	WASHER/M6 Rondelle	2	
22-72	V201-261-0190-0	BOLT/M10 x 190 Vis	1	

Ref.No. Réf.Nº.	Parts No. Pièces Nº.	Description Désignation	Q'ty Quant	Remarks Remarques
22-73	V401-160-0100-0	WASHER, SP/M10 Rondelle frein	1	
22-74	1366-613-0010-1	STAY, COVER A Support	1	
22-75	V201-260-8012-0	BOLT/M8 x 12 Vis	3	
22-76	V401-160-0080-0	WASHER, SP/M8 Rondelle frein	3	
22-77	V413-160-0080-0	WASHER/M8 Rondelle	1	
22-78	1366-613-0020-1	STAY, COVER B Support	1	
22-79	V201-261-2035-0	BOLT/M12 x 35 Vis	1	
22-80	V401-160-0120-0	WASHER, SP/M12 Rondelle frein	1	
22-81	V413-160-0120-0	WASHER/M12 Rondelle	2	No. 11901~
22-82	V300-260-0120-0	NUT/M12 Ecrou	1	
22-83	1366-612-0010-0	COVER, PULLEY Carter de poulie	1	
22-84	V201-260-8012-0	BOLT/M8 x 12 Vis	2	
22-85	V401-160-0080-0	WASHER, SP/M8 Rondelle frein	2	
22-86	V413-160-0080-0	WASHER/M8 Rondelle	2	
22-87	1370-922-2200-0	COVER, SUB Couvercle	1	
22-88	V201-260-6012-0	BOLT/M6 x 12 Vis	2	
22-89	V401-160-0060-0	WASHER, SP/M6 Rondelle, frein	2	
22-90	V413-160-0060-0	WASHER/M6 Rondelle	2	
22-91	1377-612-0020-2	COVER B Couvercle	1	
22-92	1370-922-2100-0	PLATE Plaque	1	No. 11901~13850
22-92a	1370-922-2101-0	PLATE Plaque	1	No. 13851~
22-93	V200-260-6012-0	BOLT/M6 x 12 Vis	2	
22-94	V401-160-0060-0	WASHER, SP/M6 Rondelle frein	2	No. 11901~
22-95	V413-160-0060-0	WASHER/M6 Rondelle	2	
22-96	1366-202-2000-0	COVER, PULLEY Couvercle	1	Ⓣ
22-97	5961-170-8014-2	BOLT, COVER Vis	1	
22-98	5931-370-8000-0	WASHER, SP Rondelle frein	1	used Fig. 11-24~26 Engine parts
22-99	5932-120-8000-0	WASHER Rondelle	1	
22-100	1366-201-2000-0	CLUTCH, MAIN ASSY Embrayage ensemble	1	
22-101	1366-201-2010-0	*PULLEY, MAIN SHAFT Poulie menee	1	
22-102	1366-201-2200-0	*BRACKET A Support	1	
22-103	1366-201-2300-0	*BRACKET B Support	1	
22-104	1366-201-2020-0	*PLATE, PRESS A Plaque de pression	1	
22-105	1366-201-2030-0	*PLATE, PRESS B Plaque de pression	3	No. 15451~
22-106	1366-201-2040-0	*CAP, SPRING Copuchon de ressort	6	
22-107	1366-201-2050-0	*SPRING, PRESS LARGE Ressort	6	
22-108	1366-201-2060-0	*SPRING, PRESS SMALL Ressort	6	
22-109	1366-201-2070-0	*FACING, FRICTION Garniture d'embrayage	4	

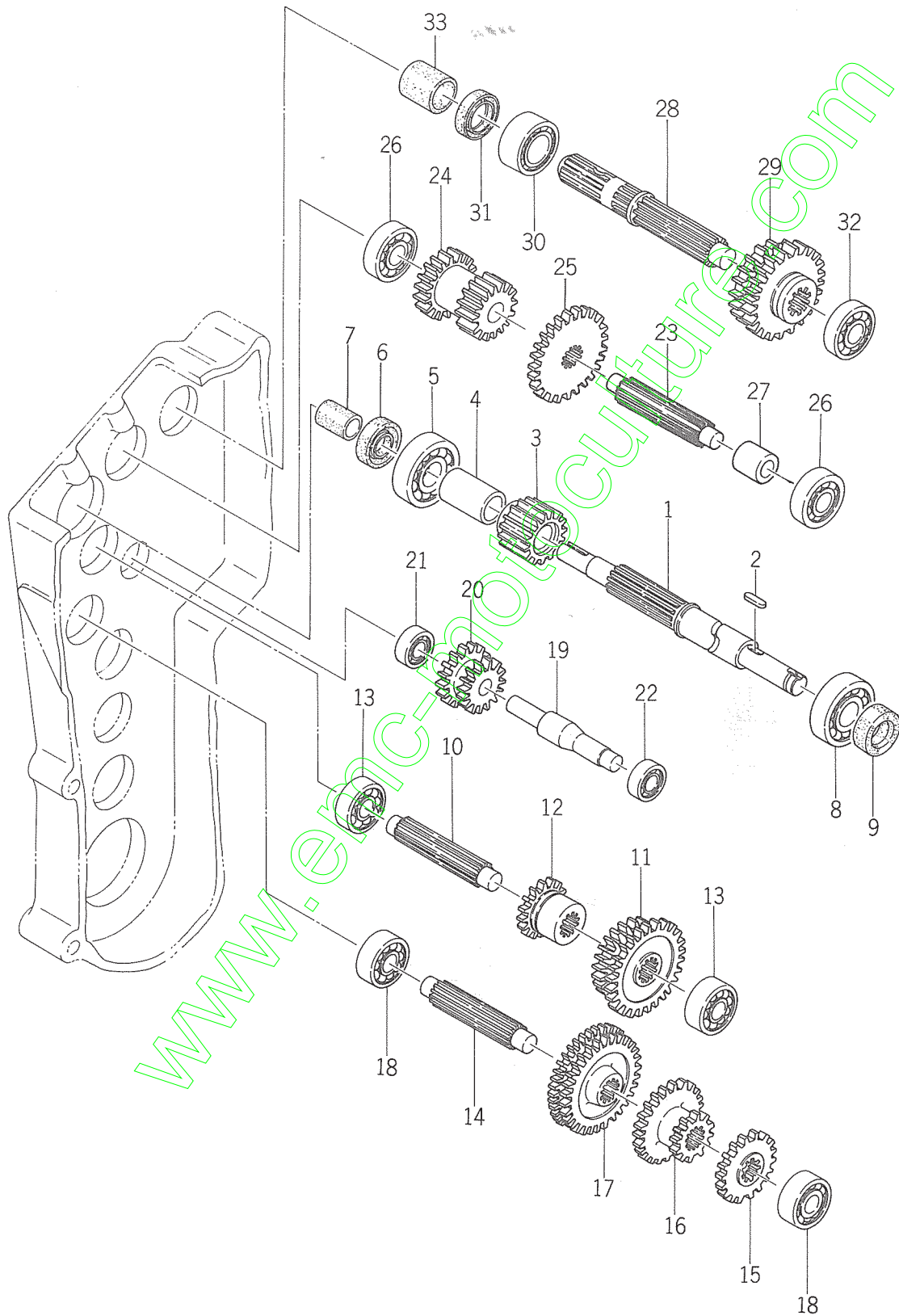
Ref.No. Réf.Nº.	Parts No. Pièces N°.	Description Désignation	Q'ty Quant	Remarks Remarques
22-110	1366-201-2080-0	• NUT, SLOTTED Ecrou a creneaux	6	} No. 15451~
22-111	1366-201-2090-0	• PIN, SPLIT Goupille elastique	6	
22-112	1366-201-2110-0	• CASE, CLUTCH Boitier d'embrayage	1	
22-113	1366-201-2120-0	• SCREW Vis	6	
22-114	V401-160-0050-0	• WASHER, SP/M5 Rondelle frein	6	
22-115	1366-201-2130-0	• BRACKET Support	1	
22-116	1366-201-2140-0	• O-RING Joint torique	1	

www.emc-motoculture.com

SERVICE MEMO

www.emc-motoculture.com

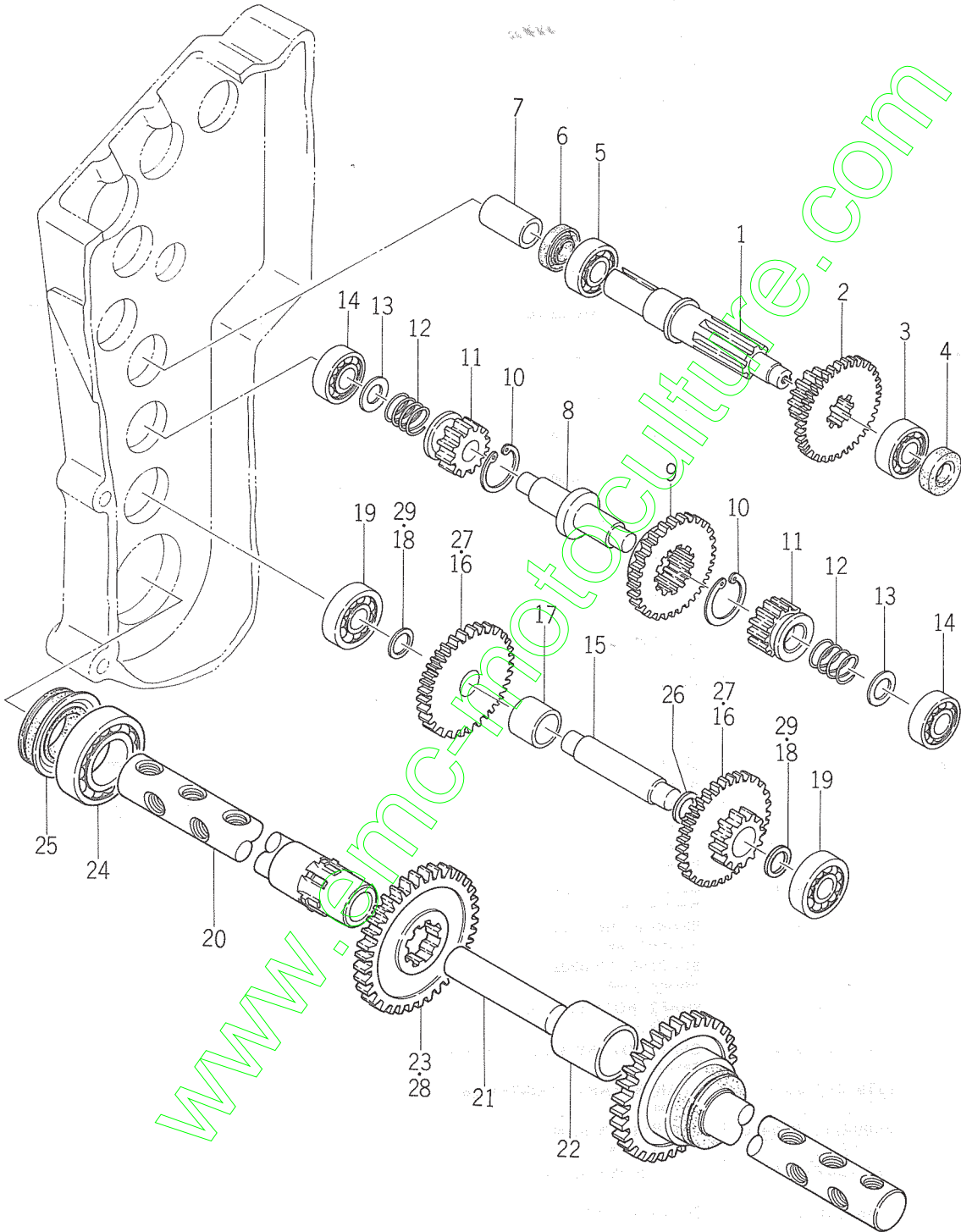
Fig.23 TRANSMISSION GEAR (1)
Reducteur (1)



Ref.No. Réf.Nº.	Parts No. Pièces Nº.	Description Désignation	Q'ty Quant	Remarks Remarques
23- 1	1366-217-0010-0	SHAFT, MAIN Arbre primaire	1	No. 1~8800
23- 1a	1366-217-0011-0	SHAFT, MAIN Arbre primaire	1	No. 8801~
23- 2	1326-217-0030-0	KEY, CLUTCH BRACKET Clavette	1	
23- 3	1366-217-0020-0	GEAR, MAIN SHAFT/15T Baladeur	1	
23- 4	1366-217-0030-0	COLLAR/25 x 32 x 52 Collier	1	
23- 5	V600-110-6204-0	BEARING, RB/6204 Roulement radial	1	
23- 6	V740-120-4007-0	SEAL, OIL/SC20407 Bague d'étanchéité	1	
23- 7	1366-217-0040-0	CAP, SHAFT/19 x 38 Chapeau d'arbre	1	No. 1~5300
23- 8	V600-110-6305-0	BEARING, RB/6305 Roulement radial	1	
23- 9	V740-125-4008-0	SEAL, OIL/SC25408 Bague d'étanchéité	1	
23-10	1366-218-0040-0	SHAFT, CHANGE Arbre secondaire	1	
23-11	1366-218-0021-0	GEAR, CHANGE/22-28T Baladeur	1	No. 1~11900
23-11a	1366-218-0022-0	GEAR, CHANGE/22-28T Baladeur	1	No. 11901~
23-12	1366-218-0031-0	GEAR, CHANGE/17T Baladeur	1	
23-12-1	1366-251-0011-0	GEAR, CHANGE/14T Baladeur	1	For low speed
23-13	V600-110-6204-0	BEARING, RB/6204 Roulement radial	2	
23-14	1366-218-0010-0	SHAFT, CHANGE Arbre	1	
23-15	1366-219-0010-0	GEAR, COUNTER/20T Baladeur	1	
23-16	1366-219-0020-0	GEAR, COUNTER/14-25T Baladeur	1	
23-17	1366-219-0030-0	GEAR, COUNTER/29-32T Baladeur	1	
23-17-1	1366-251-0020-0	GEAR, COUNTER/29-34T Baladeur	1	For low speed
23-18	V600-110-6204-0	BEARING, RB/6204 Roulement radial	2	
23-19	1366-226-0010-0	SHAFT, BACK Axe de m ar.	1	
23-19-1	1366-251-0030-0	SHAFT, BACK Axe de m ar.	1	For low speed
23-20	1366-226-0020-0	GEAR, BACK/14-18T Pignon de m ar.	1	
23-20-1	1366-251-0040-0	GEAR, BACK/16-24T Pignon de m ar.	1	For low speed
23-21	V600-110-6203-0	BEARING, RB/6203 Roulement radial	1	
23-22	V600-110-6202-0	BEARING, RB/6202 Roulement radial	1	
23-23	1370-227-0010-0	SHAFT, ROTARY COUNTER Arbre	1	
23-24	1370-227-0040-0	GEAR, ROTARY COUNTER/16-19T Baladeur	1	
23-25	1370-227-0020-0	GEAR, ROTARY COUNTER/28T Baladeur	1	
23-26	V600-110-6304-0	BEARING, RB/6304 Roulement radial	2	
23-27	1370-227-0030-0	COLLAR/25 x 32 x 17 Collier	1	
23-28	1366-228-0011-0	SHAFT, ROTARY CHANGE Arbre	1	
23-29	1370-228-0010-0	GEAR, ROTARY CHANGE/24-29T Baladeur	1	
23-30	V606-110-5205-0	BEARING, RB/5205 Roulement radial	1	
23-31	V740-125-4008-0	SEAL, OIL/SC25408 Bague d'étanchéité	1	
23-32	V600-110-6304-0	BEARING, RB/6304 Roulement radial	1	
23-33	1366-228-0030-0	CAP, SHAFT Chapeau d'arbre	1	No. 1~5300

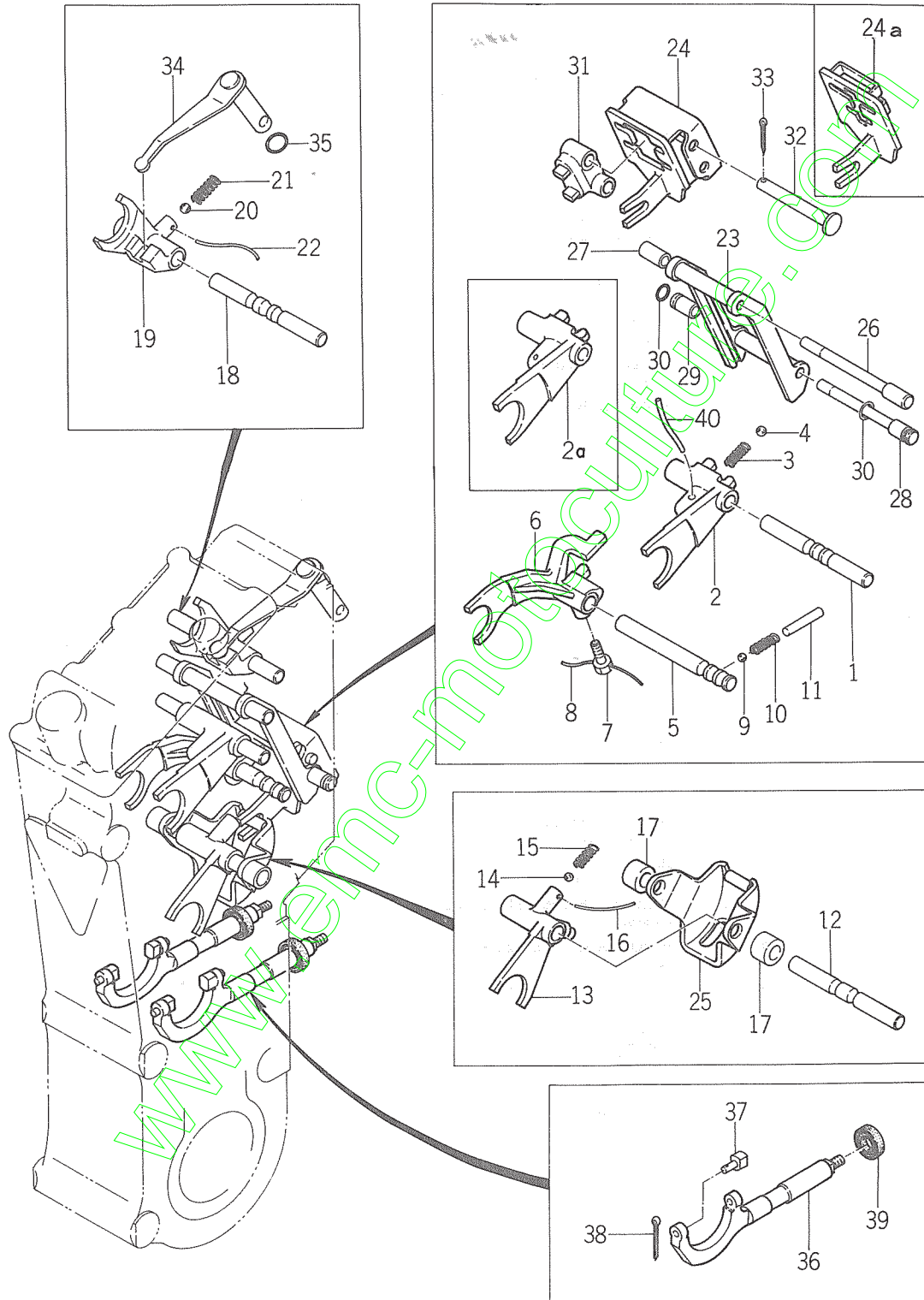
1366-217, 218, 219, 226, 251 1369-253
1370-227, 228

Fig.24 TRANSMISSION GEAR (2)
Reducteur (2)



Ref.No. Réf.Nº.	Parts No. Pièces Nº.	Description Désignation	Q'ty Quant	Remarks Remarques
24- 1	1366-220-0010-0	SHAFT, BRAKE Arbre	1	
24- 2	1366-220-0020-0	GEAR, SUB CHANGE Baladeur	1	
24- 3	V600-110-6204-0	BEARING, RB/6204 Roulement radial	1	
24- 4	V740-120-4007-0	SEAL-OIL/SC20407 Bague d'étanchéité	1	
24- 5	V600-110-6205-0	BEARING, RB/6205 Roulement radial	1	
24- 6	V740-125-4008-0	SEAL, OIL/SC25408 Bague d'étanchéité	1	
24- 7	1366-220-0030-0	CAP, SHAFT/23 x 46 Chapeau d'arbre	1	No. 1~5300
24- 8	1338-223-0010-0	SHAFT, SIDE CLUTCH Arbre de clabots	1	
24- 9	1366-223-0010-0	GEAR, SIDE CLUTCH Roue de clabotage	1	
24-10	V705-140-0420-0	RING, SNAP/C 42 Collet d'axe	2	
24-11	1338-223-0020-0	GEAR, SIDE CLUTCH/13T Roue de clabotage	2	
24-12	1333-224-0040-0	SPRING, SIDE CLUTCH Ressort de pression	2	
24-13	1323-220-0100-0	COLLAR, BRAKE SHAFT A Rondelle	2	
24-14	V600-110-6303-0	BEARING, RB/6303 Roulement radial	2	
24-15	1366-224-0010-0	SHAFT, WHEEL PINION Arbre	1	
24-16	1366-224-0020-0	PINION, WHEEL/13-34T Clabot	2	
24-17	1360-224-0020-0	COLLAR/ 25 x 34 x 25 Collier	1	
24-18	1338-224-0030-0	COLLAR, THRUST/20 x 2 Axe de butée	2	
24-19	V600-110-6304-0	BEARING, RB/6304 Roulement radial	2	
24-20	1360-225-0011-0	SHAFT, WHEEL Fusse	2	
24-21	1360-225-0020-0	PIN, WHEEL SHAFT Arbre de roues	1	
24-22	1341-225-0040-0	COLLAR/40 x 51 x 53 Collier	1	
24-23	1341-225-0030-0	GEAR, WHEEL/42T Roue dentée du démultiplicateur	2	
24-24	V600-110-6209-0	BEARING, RB/6209 Roulement radial	2	
24-25	1360-225-0040-0	SEAL Bague d'étanchéité	2	
24-26	1369-253-0010-0	COLLAR, THRUST/21 x 24 x 2 Axe de butée	1	★
24-27	1341-224-0050-0	PINION, WHEEL H/12x 34T Clabot	2	★
24-28	1341-225-0050-0	GEAR, WHEEL H/36T Roue dentée du démultiplicateur	2	★
24-29	1365-224-0020-0	WASHER Rondelle	2	★

Fig.25 SHIFTER
Fourchettes



Ref.No. Réf.Nº.	Parts No. Pièces Nº.	Description Désignation	Q'ty Quant	Remarks Remarques
25- 1	1366-229-0020-0	STAY, MAIN SHIFTER Axe de fourchette	1	
25- 2	1366-229-0010-0	SHIFTER, MAIN CHANGE Fourchette de m aV.	1	No. 1~12550
25- 2a	1366-229-0011-0	SHIFTER, MAIN CHANGE Fourchette de m aV.	1	No. 12551~
25- 3	1302-225-0030-0	SPRING, SHIFTER Ressort de verrouillage	1	
25- 4	V680-100-0010-0	BALL, STEEL Bille de verrouillage	1	
25- 5	1366-229-0041-0	STAY, BACK SHIFTER Axe de fourchette	1	
25- 6	1366-229-0031-0	SHIFTER, BACK Fourchette de m ab	1	No. 1~12550
25- 6a	1366-229-0032-0	SHIFTER, BACK Fourchette de m ab	1	No. 12551~
25- 7	1366-229-0210-0	BOLT Vis	1	No. 1~12550
25- 7a	1366-229-0211-0	BOLT Vis	1	No. 12551~
25- 8		WIRE/1.2 x 100 Fil	1	
25- 9	V680-100-0010-0	BALL, STEEL Bille de verrouillage	1	
25-10	1302-225-0030-0	SPRING, SHIFTER Ressort de verrouillage	1	No. 1~6800
25-10a	1366-229-0220-0	SPRING, SHIFTER Ressort de verrouillage	1	No. 6801~
25-11	1366-229-0050-0	PIN/8 x 38 Goupille	1	No. 1~6800
25-12	1366-229-0070-0	STAY, SUB SHIFTER Axe de fourchette	1	
25-13	1366-229-0060-0	SHIFTER, SUB CHANGE Fourchette	1	
25-14	V680-100-0010-0	BALL, STEEL Bille de verrouillage	1	
25-15	1301-229-0040-0	SPRING, SHIFTER Ressort de verrouillage	1	
25-16		WIRE/1.6 x 30 Fil	1	
25-17	1366-229-0080-0	BUSH/13 x 22 x 16 Coussinet	2	
25-18	1366-229-0100-0	STAY, ROTARY SHIFTER Axe de fourchette	1	
25-19	1366-229-0090-0	SHIFTER, ROTARY CHANGE Fourchette	1	
25-20	V680-100-0010-0	BALL, STEEL Bille de verrouillage	1	
25-21	1302-225-0030-0	SPRING, SHIFTER Ressort de verrouillage	1	
25-22		WIRE/1.6 x 30 Fil	1	
25-23	1366-229-1000-0	HOLDER Griffe	1	
25-24	1366-229-2001-0	GUIDE Grille de vitesses	1	No. 1~12550
25-24a	1366-229-2002-0	GUIDE Grille de vitesses	1	No. 12551~
25-25	1366-229-3000-0	GUIDE, SUB SHIFTER Grille de vitesses	1	
25-26	1366-229-0110-0	PIN, GUIDE A Axe de grille	1	
25-27	1366-229-0120-0	BUSH/19 x 13 x 23 Coussinet	1	
25-28	1366-229-0130-0	PIN, GUIDE B Axe de grille	1	
25-29	1366-229-0140-0	BUSH Coussinet	1	
25-30	V720-101-9010-0	O-RING/P10 Joint torique	2	
25-31	1366-229-0150-0	SUPPORT Support	1	
25-32	1366-229-0160-0	PIN/10 x 78 Goupille	2	No. 1~12550
25-33	V500-154-0020-0	PIN, SPLIT/4 x 20 Goupille fendue	2	

Ref.No. Réf.Nº	Parts No. Pièces Nº	Description Désignation	Q'ty Quant	Remarks Remarques
25-34	1366-229-4000-0	ARM, ROTARY SHIFT Selecteur	1	
25-35	V720-102-4016-0	O-RING/P16 Joint torique	1	
25-36	1366-229-0171-0	SHIFTER, SIDE CLUTCH Fourchette de clabotage	2	
25-37	1341-229-0160-0	COLLAR, SHIFTER Griffe de frottement	4	
25-38	V500-151-6012-0	PIN, SPLIT/6 x 12 Goupille fendue	4	
25-39	V740-116-2807-0	SEAL, OIL/SC16287 Bague d'étanchéité	2	
25-40		WIRE/1.6 x 30 Fil	1	No. 12551~

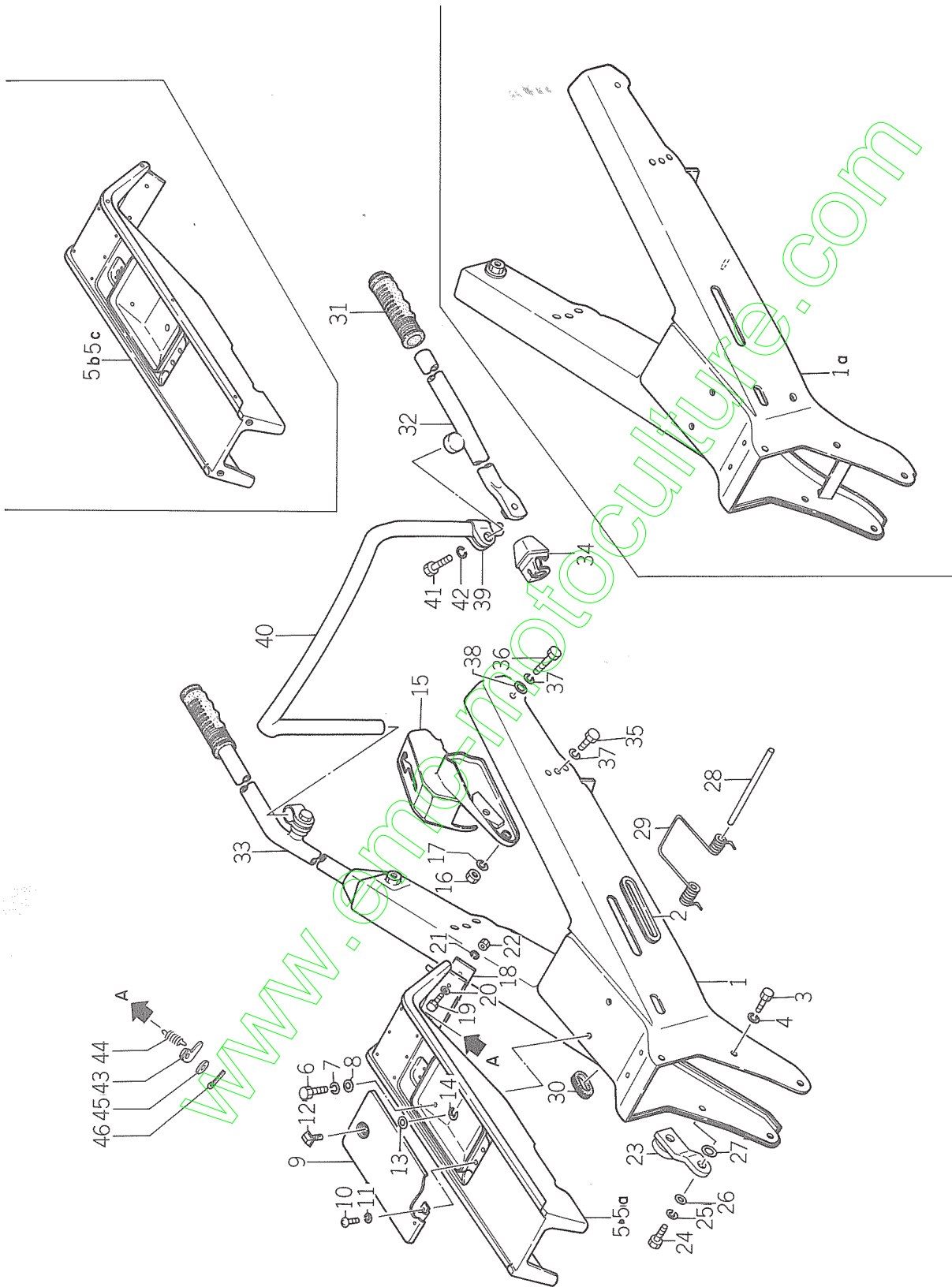
www.emc-motoculture.com

PART SERVICE MEMO

www.emc-motoculture.com

Fig.26 HANDLE FRAME

Mancherons



Ref.No. Réf.Nº.	Parts No. Pièces Nº.	Description Désignation	Q'ty Quant	Remarks Remarques
26- 1	1370-301-1000-0	FRAME, HANDLE Age	1	Warm white } Ivory white } No. 1~18420
	1370-301-1000-1	FRAME, HANDLE Age	1	
26- 1a	1370-301-1002-1	FRAME, HANDLE Age	1	No. 18421~
26- 2	1366-301-0010-0	GROMMET Bague de passage	2	
26- 3	V201-261-2025-0	BOLT/M12 x 25 Vis	5	
26- 4	V401-160-0120-0	WASHER, SP/M12 Rondelle frein	5	
26- 5	1370-301-2000-0	PANEL, HANDLE Panneau d'age	1	No. 1~6800
26- 5a	1370-301-2001-0	PANEL, HANDLE Panneau d'age	1	No. 6801~16350
26- 5b	1370-301-2002-0	PANEL, HANDLE Panneau d'age	1	No. 16351~18420
26- 5c	1370-301-2003-0	PANEL, HANDLE Panneau d'age	1	No. 18421~
26- 6	V201-260-8014-0	BOLT/M8 x 14 Vis	4	
26- 7	V401-160-0080-0	WASHER, SP/M8 Rondelle frein	4	
26- 8	V413-160-0080-0	WASHER/M8 Rondelle	4	
26- 9	1366-301-3000-0	COVER, TOOL BOX Portillon d'age	1	
26-10	V110-165-0010-0	SCREW/M5 x 10 Vis	2	No. 1~9900
26-10a	V111-165-0010-0	SCREW/M5 x 10 Vis	2	No. 9901~
26-11	V401-160-0050-0	WASHER, SP/M5 Rondelle frein	2	
26-12	1338-301-4000-0	KNOB, SET Fermeture	1	
26-13	1338-301-0050-0	WASHER/W-8 Rondelle	1	
26-14	V710-140-0060-0	RING, STOP/E 6 Collet d'axe	1	
26-15	1370-301-3000-0	CASE, CLUTCH Grille de vitesses	1	Warm white
	1370-301-3000-1	CASE, CLUTCH Grille de vitesses	1	Ivory white
26-16	V300-260-0080-0	NUT/M8 Ecrou	2	
26-17	V401-160-0080-0	WASHER, SP/M8 Rondelle frein	2	
26-18	1370-301-4000-0	HOOK Cavalier	1	
26-19	V201-260-8025-0	BOLT/M8 x 25 Vis	2	
26-20	V413-160-0080-0	WASHER/M8 Rondelle	2	
26-21	V401-160-0080-0	WASHER, SP/M8 Rondelle frein	2	
26-22	V300-260-0080-0	NUT/M8 Ecrou	2	
26-23	1366-301-6000-0	HOLDER, CHAIN CASE Support	1	
26-24	V202-161-2036-0	BOLT/M12 x 36 Vis	1	
26-25	V401-160-0120-0	WASHER, SP/M12 Rondelle frein	1	
26-26	V413-160-0120-0	WASHER/M12 Rondelle	1	
26-27	1407-117-0070-0	WASHER/13 x 32 x 1 Rondelle	2	
26-28	1366-301-0041-0	PIN/10 x 180 Axe	1	
26-29	1366-301-0031-0	SPRING, TORQUE/95 Ressort de torsion	1	No. 1~12550
26-29a	1366-301-0032-0	SPRING, TORQUE/90 Ressort de torsion	1	No. 12551~
26-30	1366-301-0050-0	GROMMET B Bague de passage	2	

Ref.No. Réf.Nº.	Parts No. Pièces Nº.	Description Désignation	Q'ty Quant	Remarks Remarques
26-31	1366-311-0020-0	GRIP, HANDLE Poignée	2	
26-32	1370-311-1000-0	PIPE, HANDLE LH Bras	1	Warm white
	1370-311-1000-1	PIPE, HANDLE LH Bras	1	Ivory white
26-33	1370-311-2000-0	PIPE, HANDLE RH Bras	1	Warm white
	1370-311-2000-1	PIPE, HANDLE RH Bras	1	Ivory white
26-34	1370-311-0010-0	BOOT, PIPE Cupule	2	
26-35	V201-261-2025-0	BOLT/M12 x 25 Vis	2	
26-36	V201-261-2060-0	BOLT/M12 x 60 Vis	2	
26-37	V401-160-0120-0	WASHER, SP/M12 Rondelle frein	4	
26-38	V413-160-0120-0	WASHER/M12 Rondelle	2	
26-39	1366-311-2000-0	BRACKET Agrafe	2	
26-40	1366-311-0080-0	PIPE, HANDLE CONNECT Raccord	1	
26-41	V201-261-2040-0	BOLT/M12 x 40 Vis	2	
26-42	V401-160-0120-0	WASHER, SP/M12 Rondelle	2	
26-43	1370-301-2100-0	PLATE, GUARD Plaque de protection	1	} 1370-301-030
26-44	1370-301-0010-0	SPRING, GUARD/21 Ressort a boudin	1	
26-45	V413-160-0060-0	WASHER/M6 Rondelle	1	
26-46	V500-151-6010-0	PIN, SPLIT/1.6 x 10 Goupille fendue	1	

www.emc-motoculture.com

SERVICE MEMO

www.emc-motoculture.com

Ref.No. Réf.Nº.	Parts No. Pièces Nº.	Description Désignation	Q'ty Quant	Remarks Remarques
27- 1	1366-401-1000-0	LEVER, MAIN CLUTCH Levier d'embrayage	1	
27- 2	1366-401-0010-0	KNOB, LEVER/21 x 85 Poignée	1	
27- 3	1366-401-0040-0	PIPE/19 Collier	1	
27- 4	1366-401-0050-0	SPRING, TORQUE/15 Ressort de torsion	1	
27- 5	1366-401-2000-0	ROD, CLUTCH A Tige d'embrayage	1	
27- 6	1366-401-0030-0	PIN/6 x 18 Axe de chape	1	
27- 7	V413-160-0060-0	WASHER/M6 Rondelle	1	
27- 8	V500-152-0015-0	PIN, SPLIT/2 x 15 Goupille fendue	1	
27- 9	1421-122-0030-0	TURNBUCKLE Tendeur de tirant	1	
27-10	1404-303-0040-0	NUT, LH THREAD/M8 Ecou	1	
27-11	V302-260-0080-0	NUT/M8 Ecou	1	
27-12	1370-401-0020-0	ROD, MAIN CLUTCH Tige d'embrayage	1	No. 1~8800
27-12a	1370-401-0021-0	ROD, MAIN CLUTCH Tige d'embrayage	1	No. 8801~
27-13	V413-160-0080-0	WASHER/M8 Rondelle	1	
27-14	V500-153-0020-0	PIN, SPLIT/3 x 20 Goupille fendue	1	
27-15	1360-401-3000-0	ADJUSTER, BRAKE Peigne de réglage	1	No. 1~8800
27-15a	1366-401-4000-0	ADJUSTER, BRAKE Peigne de réglage	1	No. 8801~
27-16	W200-260-6020-0	BOLT/M6 x 20 S= 20 Vis	1	
27-17	V302-260-0060-0	NUT/M6 Ecou	1	
27-18	1341-401-0020-0	SPRING, BRAKE Ressort	1	No. 1~8800
27-18a	1366-401-0070-0	SPRING, BRAKE Ressort	1	No. 8801~
27-19	1326-402-0020-0	WIRE, THROTTLE UNIT Cable d'accélérateur	1	
27-20	1315-621-0140-0	BAND/RUBBER Agrafe	2	No. 1~9900
27-20a	1376-402-0030-0	BAND, WIRE/140 Agrafe	2	No. 9901~
27-20b	1427-621-0260-0	CLAMP, HARNESS/150 Agrafe	1	
27-21	1404-621-0320-0	CLAMP, WIRE Agrafe	1	No. 1~6800
27-22	1370-403-0010-0	LEVER, MAIN CHANGE Lever de changement de vitesses	1	No. 1~12550
27-22a	1370-403-0011-0	LEVER, MAIN CHANGE Lever de changement de vitesses	1	No. 12551~18920
27-22b	1370-403-0012-0	LEVER, MAIN CHANGE Lever de changement de vitesses	1	No. 18921~
27-23	1414-207-0050-0	KNOB, LEVER/48 Pommeau	1	
27-24	1366-403-0020-0	BOOT, CHANGE Cupule de rotule	1	
27-25		WIRE/1.2 x 300 Fil	1	
27-26		WIRE/1.2 x 150 Fil	1	
27-27	1338-400-0510-0	LEVER, SIDE CLUTCH LH ASSY Direction G.	1	
27-28	V200-250-6025-0	BOLT/M6 x 25 Vis	2	
27-29	1366-400-0510-0	LEVER, SIDE CLUTCH RH ASSY Direction D.	1	
27-30	1370-406-0010-0	WIRE, SIDE CLUTCH Cable de clabotage	2	
27-31	1370-406-0020-0	ARM, SIDE CLUTCH LH Etrier G.	1	

1366-402, 651

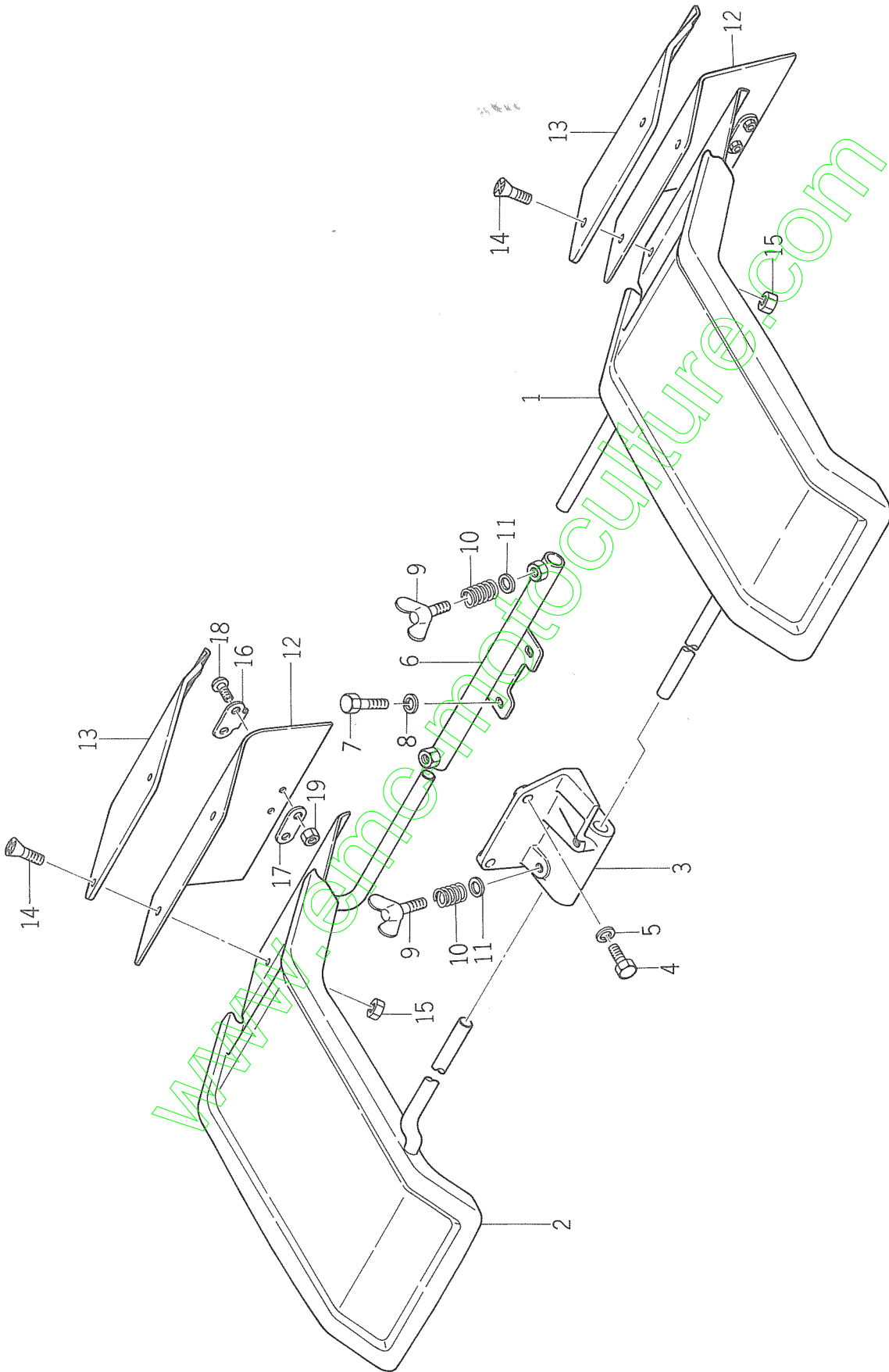
1370-401, 403, 405, 406, 411, 416

Ref.No. Réf.Nº.	Parts No. Pièces Nº.	Description Désignation	Q'ty Quant	Remarks Remarques
27-32	1370-406-0030-0	ARM, SIDE CLUTCH RH Etrier D.	1	
27-33	V413-160-0080-0	WASHER/M8 Rondelle	2	
27-34	V401-160-0080-0	WASHER, SP/M8 Rondelle frein	2	
27-35	V300-260-0080-0	NUT/M8 Erou	2	
27-36	1326-401-0070-0	PIN, MAIN CLUTCH Axe	2	
27-37	V413-160-0060-0	WASHER/M6 Rondelle	2	
27-38	V500-152-0015-0	PIN, SPLIT/2 x 15 Goupille fendue	2	
27-39	1370-406-0040-0	SPRING, RETURN Ressort	1	
27-40	1370-405-1001-0	PLATE, STOP Limiteur	1	No. 1~6800
27-40a	1370-405-1002-0	PLATE, STOP Limiteur	1	No. 6801~
27-41	1370-405-2000-0	GUIDE, CAM Grille	1	} No. 1~6800
27-42	1370-405-3000-0	CAM Came	1	
27-43	1370-405-0020-0	ROLLER Galet	1	} No. 1~6800
27-44	1370-405-0030-0	SPRING, PRESS/33 Ressort	1	
27-45	1370-405-4000-0	PIN, ROLLER Axe de galet	1	
27-46	V200-460-6018-0	BOLT/M6 x 18 Vis	1	} No. 1~6800
27-47	V302-260-0060-0	NUT/M6 Erou	1	
27-48	1370-411-1000-0	LEVER, ROTARY CHANGE Levire d'embrayage	1	
27-49	1407-117-0031-0	KNOB, LEVER/31 Poignee	1	
27-50	1366-411-0010-0	BOLT/M10 x 20 S = 20 Vis	1	
27-51		WIRE/1.6 x 100 Fil	1	
27-52	1366-600-0510-0	SWITCH, LIGHT UNIT Commutateur	1	
27-53	1352-621-0010-0	CLAMP Agrafe	1	
27-54	1352-600-0520-0	HORN ASSY Avertisseur	1	★
27-55	1370-416-0010-0	ROD, STAND Tige de beguille	1	
27-56	V411-160-0100-0	WASHER/M10 Rondelle	2	
27-57	V500-152-5022-0	PIN, SPLIT/2.5 x 22 Goupille fendue	2	
27-58	1370-401-0030-0	PIPE/29 Collier	1	
27-59	1370-401-0010-0	PIN/12 x 72 Axe d'embrayage	1	
27-60	V500-153-0020-0	PIN, SPLIT/3 x 20 Goupille fendue	1	
27-61	1414-606-0020-0	GROMMET/12 x 9 Bague de passage	1	
27-62	1324-300-0510-0	MIRROR, R. VIEW UNIT Retroviseur	1	★
27-63	V413-160-0080-0	WASHER/M8 Rondelle	1	} No. 6801~
27-64	V500-152-0015-0	PIN, SPLIT/2 x 15 Goupille fendue	1	

SERVICE MEMO

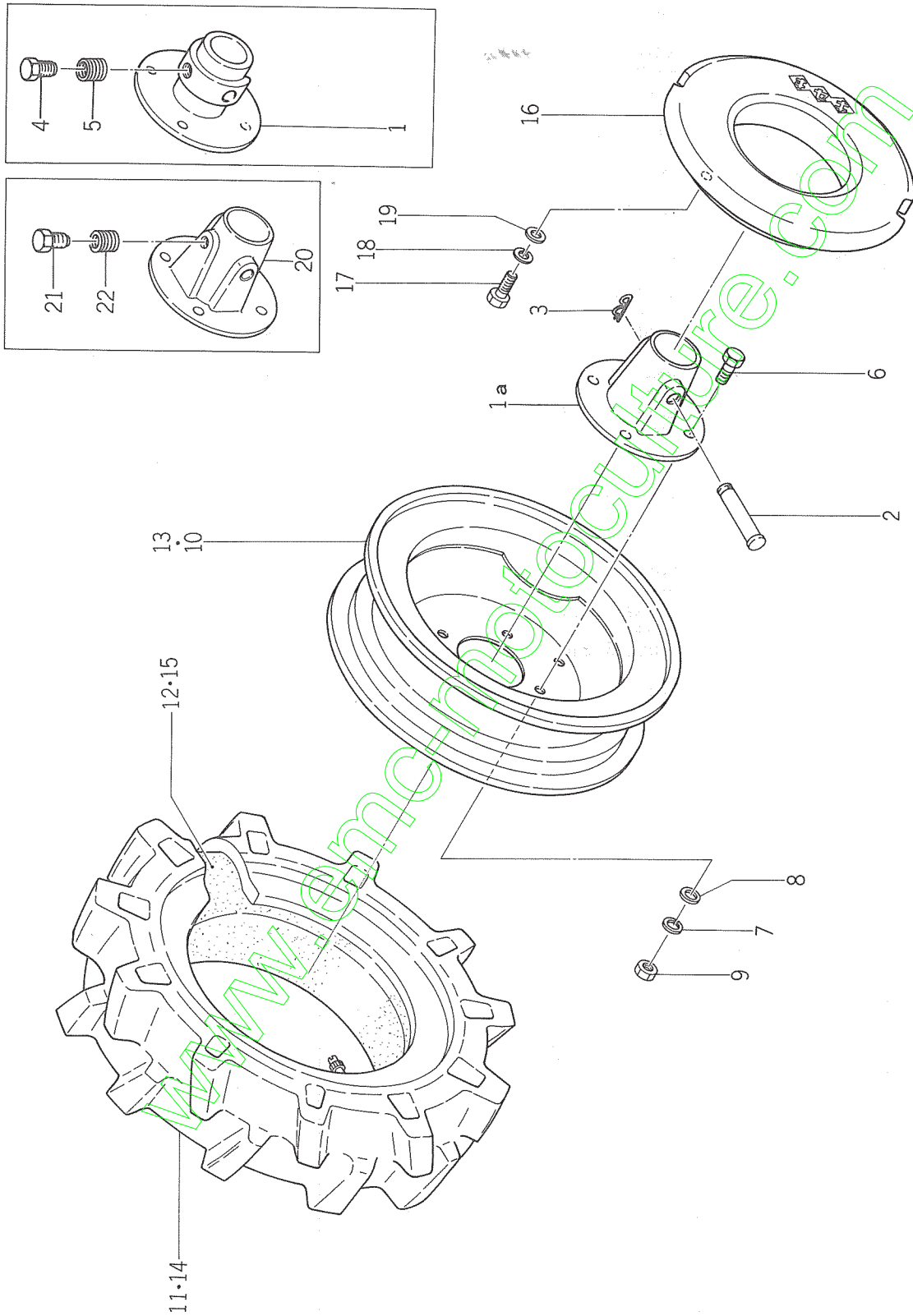
www.emc-motoculture.com

Fig.28 FENDER
Garde-boue



Ref.No. Réf.Nº.	Parts No. Pièces Nº.	Description Désignation	Q'ty Quant	Remarks Remarques
28- 1	1366-616-1000-0	FENDER LH Garde-boue G.	1	Warm white
	1366-616-1000-1	FENDER LH Garde-boue G.	1	Ivory white
28- 2	1366-616-2000-0	FENDER RH Garde-boue D.	1	Warm white
	1366-616-2000-1	FENDER RH Garde-boue D.	1	Ivory white
28- 3	1366-616-0030-0	BRACKET, FENDER A Bride de garde-boue	1	
28- 4	V201-260-8020-0	BOLT/M8 x 20 Vis	3	
28- 5	V401-160-0080-0	WASHER, SP/M8 Rondelle frein	3	
28- 6	1366-616-3000-0	BRACKET, FENDER B Bride de garde-boue	1	
28- 7	V201-260-8012-0	BOLT/M8 x 12 Vis	2	
28- 8	V401-160-0080-0	WASHER, SP/M8 Rondelle frein	2	
28- 9	V270-160-8018-0	BOLT, WING/M8 x 18 Ecrou a oreilles	4	
28-10	1338-616-0020-0	SPRING, PRESS/11 Ressort	4	
28-11	V413-160-0080-0	WASHER/M8 Rondelle	2	
28-12	1366-616-0010-0	GUARD, FENDER MUD Bavette	2	
28-13	1366-616-0020-0	PLATE, SET Barette	2	
28-14	V112-165-0012-0	SCREW/M5x 12 Vis	8	
28-15	V300-260-0050-0	NUT/M5 Ecrou	8	
28-16	1302-721-0020-0	HOOK, RUBBER FENDER Plaque de fixation	2	
28-17	1302-721-0030-0	WASHER, HOOK Rondelle frein	2	
28-18	V111-165-0010-0	SCREW/M5 x 10 Vis	4	
28-19	V300-260-0050-0	NUT/M5 Ecrou	4	

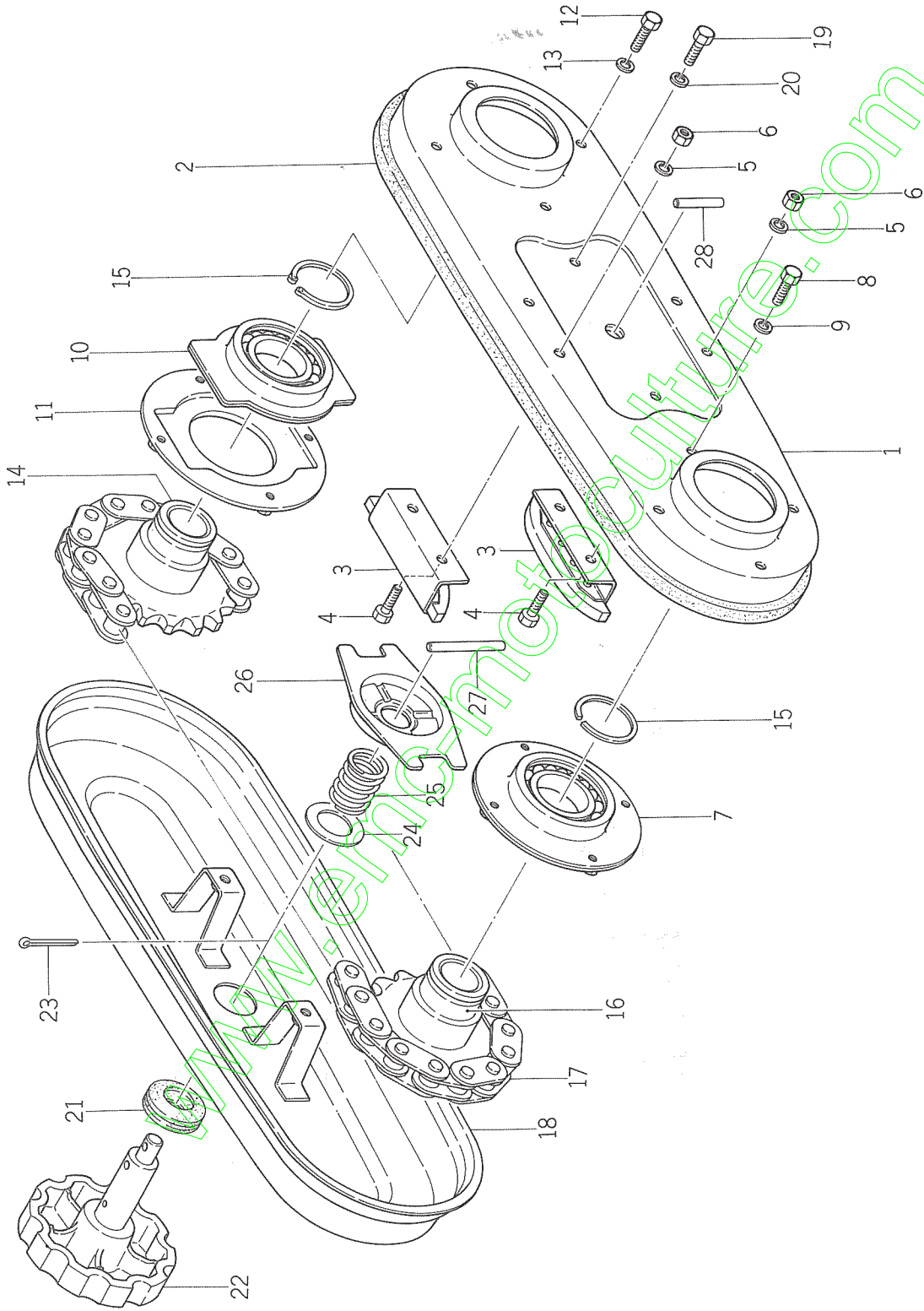
Fig.29 WHEEL
Roues



Ref.No. Réf.Nº	Parts No. Pièces Nº.	Description Désignation	Q'ty Quant	Remarks Remarques
29- 1	1366-241-1000-0	BOSS, WHEEL Moyeu	2	No. 1~13850 Warm white
	1366-241-1000-1	BOSS, WHEEL Moyeu	2	Ivory white
29- 1a	1366-241-0040-1	BOSS, WHEEL Moyeu	2	No. 13851~
29- 2	1366-241-0010-0	PIN, WHEEL BOSS Goupille	2	
29- 3	1305-931-0030-0	PIN Attache beta	2	
29- 4	1366-241-0020-0	BOLT, WHEEL Vis	2	} No. 1~5300
29- 5	1366-241-0030-0	SPRING, WHEEL Ressort	2	
29- 6	V201-261-2028-0	BOLT/M12 x 28 Vis	8	
29- 7	V401-160-0120-0	WASHER, SP/M12 Rondelle frein	8	
29- 8	V413-160-0120-0	WASHER/M12 Rondelle	8	
29- 9	V300-260-0120-0	NUT/M12 Ecroû	8	
29- 0-2	1366-024-2000-0	TIRE, LH ASSY/6-12 Roue G.	1	★
29- 0-3	1366-024-2100-0	TIRE, RH ASSY/6-12 Roue D.	1	★
29-10	1341-242-0011-1	• DRUM, WHEEL/5J x 12 Flasque	2	★ Warm white
	1341-242-0011-2	• DRUM, WHEEL/5J x 12 Flasque	2	★ Ivory white
29-11	V882-020-0612-0	• TIRE/6-12 Pneu	2	★
29-12	V883-000-0612-0	• TUBE/6-12 Chambre a air	2	★
29- 0-4	1338-200-9060-0	TIRE, LH ASSY/5.00-12 Roue G.	1	
29- 0-5	1338-200-9070-0	TIRE, RH ASSY/5.00-12 Roue D.	1	
29-13	1338-241-0011-3	• DRUM, WHEEL/4J x 12 Flasque	2	Warm white
	1338-241-0011-2	• DRUM, WHEEL/4J x 12 Flasque	2	Ivory white
29-14	V882-025-0012-0	• TIRE/2PR Pneu	2	
29-15	V883-005-0012-0	• TUBE/5.00-12 Chambre a air	2	
29-16	1366-931-0030-2	WEIGHT, WHEEL/17 kg Masse pour roue	2	★
29-17	V201-261-2028-0	BOLT/M12 x 28 Vis	4	★
29-18	V401-160-0120-0	WASHER, SP/M12 Rondelle frein	4	★
29-19	V413-160-0120-0	WASHER/M12 Rondelle	4	★
29-20	1366-241-0041-0	BOSS, WHEEL Moyeu	2	} No. 14601~
29-21	1366-241-0020-0	BOLT, WHEEL Vis	2	
29-22	1366-241-0030-0	SPRING, WHEEL Ressort	2	

Fig.30 COUNTER CHAIN CASE

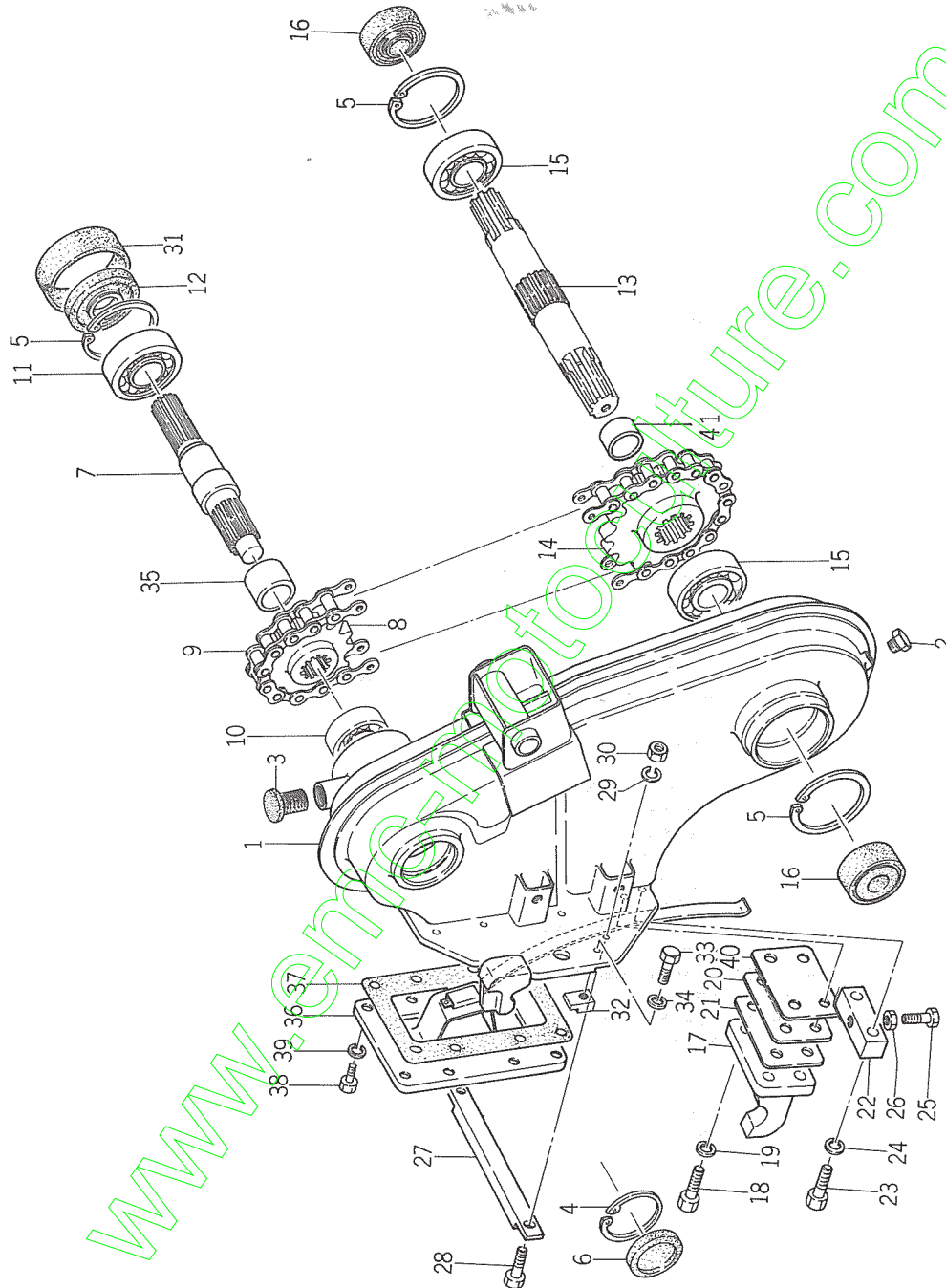
Chaine intermediaire



Ref.No. Réf.Nº.	Parts No. Pièces Nº.	Description Désignation	Q'ty Quant	Remarks Remarques
30- 0-1	1369-701-2000-0	CASE, COUNTER CHAIN ASSY Carter de chaîne ensemble	1	
30- 1	1366-701-2000-0	•CASE, COUNTER CHAIN LH Carter de chaîne G.	1	
30- 2	1338-701-1040-0	•PACKING/RUBBER Joint caoutchouc	1	
30- 3	1369-701-1000-0	•GUIDE, CHAIN Guide chaîne	2	
30- 4	V201-260-8012-0	•BOLT/M8 x 12 Vis	4	
30- 5	V401-160-0080-0	•WASHER, SP/M8 Rondelle frein	4	
30- 6	V300-260-0080-0	•NUT/M8 Ecrou	4	
30- 7	1341-702-2000-0	•METAL A Palier secondaire	1	
30- 8	V200-260-6012-0	•BOLT/M6 x 12 Vis	4	
30- 9	V401-160-0060-0	•WASHER, SP/M6 Rondelle frein	4	
30-10	1341-702-3000-0	•METAL B Palier primaire	1	
30-11	1341-702-4000-0	•METAL C Flasque de palier	1	
30-12	V200-260-6012-0	•BOLT/M6 x 12 Vis	4	
30-13	V401-160-0060-0	•WASHER, SP/M6 Rondelle frein	4	
30-14	1369-701-0020-0	•SPROCKET/19T Pignon	1	
30-15	V704-140-0350-0	•RING, SNAP/C 35 Collet d'axe	2	
30-16	1369-701-0010-0	•SPROCKET/14T Pignon	1	
30-17	1369-701-0030-0	•CHAIN, ROLLER Chaîne	1	
30-18	1341-702-5000-1	•CASE, COUNTER CHAIN RH Carter de chaîne D.	1	
30-19	V201-260-8014-0	•BOLT/M8 x 14 Vis	2	
30-20	V401-160-0080-0	•WASHER, SP/M8 Rondelle frein	2	
30-21	1338-701-0050-0	•COVER/RUBBER Bague de passage	1	
30-22	1366-701-1000-0	•KNOB, SET Bouton de fermeture	1	
30-23	V500-153-0035-0	•PIN, SPLIT/3 x 35 Goupille fendue	1	
30-24	1341-721-1040-0	•WASHER/21 x 36 x 2 Rondelle	1	
30-25	1366-701-0020-0	•SPRING, PRESS/35 Ressort	1	
30-26	1366-701-0010-0	•PLATE, LOCK Socle de ressort	1	
30-27	1366-701-0030-0	•PIN/E 5 x 46 Goupille	1	
30-28	1366-701-0040-0	•PIN/E 5 x 28 Goupille	1	

Fig.31 ROTARY CHAIN CASE

Transmission de rotobineuse



Ref.No. Réf.Nº.	Parts No. Pièces N°.	Description Désignation	Q'ty Quant	Remarks Remarques
31- 1	1370-706-1000-0	CASE, ROTARY CRAIN -Demi-carter	1	No. 1~1000
31- 1a	1370-706-1001-0	CASE, ROTARY CRAIN -Demi-carter	1	No. 1001~
31- 2	1326-706-0020-0	PLUG, DRAIN Bouchon de vidange	2	
31- 3	1366-706-0010-0	CAP, OIL Bouchon	1	
31- 4	V705-140-0520-0	RING, SNAP/C 52 Collet d'axe	1	
31- 5	V703-140-0620-0	RING, SNAP/C 62 Collet d'axe	3	
31- 6	1334-221-0020-0	SEAL/52 Opercule	1	
31- 7	1366-708-0010-0	SHAFT, ROTARY TOP Arbre superieur	1	
31- 8	1366-708-0020-0	SPROCKET/11T Pignon	1	
31- 9	1341-708-0030-0	CHAIN, ROLLER Chaîne	1	
31-10	V600-110-6304-0	BEARING, RB/6304 Roulement radial	1	
31-11	V600-110-6206-0	BEARING, RB/6206 Roulement radial	1	
31-12	V740-130-6210-0	SEAL, OIL/SC306210 Bague d'étanchéité	1	
31-13	1370-709-0010-0	SHAFT, ROTARY Arbre de fraises	1	
31-14	1370-709-0020-0	SPROCKET/19T Pignon	1	No. 1~1000
31-14a	1370-709-0021-0	SPROCKET/19T Pignon	1	No. 1001~
31-15	V600-110-6206-0	BEARING, RB/6206 Roulement	2	
31-16	1365-709-0010-0	SEAL, OIL/QLN306216185 Bague d'étanchéité	2	
31-17	1366-706-3000-0	HOLDER Griffe	1	
31-18	V201-461-0025-0	BOLT/M10 X 25 9T Vis	4	
31-19	V401-160-0100-0	WASHER, SP/M10 Rondelle frein	4	
31-20	1366-706-0040-0	SHIM, HOLDER A/T=0.5 Cale	AR	
31-21	1366-706-0050-0	SHIM, HOLDER B/T=1.0 Cale	AR	
31-22	1366-706-0020-0	ADJUSTOR Plaque de butée	1	
31-23	V201-261-0032-0	BOLT/M10 X 32 Vis	2	
31-24	V401-160-0100-0	WASHER, SP/M10 Rondelle frein	2	
31-25	W201-261-2036-0	BOLT, M12 X 36 S=36 Vis	1	
31-26	V302-260-0120-0	NUT/M12 Erou	1	
31-27	1366-706-0030-0	STOPPER Pastille	1	
31-28	V200-260-6022-0	BOLT/M6 X 22 Vis	2	
31-29	V401-160-0060-0	WASHER, SP/M6 Rondelle frein	2	
31-30	V300-260-0060-0	NUT/M6 Erou	2	
31-31	1366-706-0060-0	TUBE, CUSHION Protecteur	1	
31-32	1366-706-0070-0	BOSS, ADJ Loqueteau de réglage	2	
31-33	V201-261-2030-0	BOLT, M12 X 30 Vis	2	
31-34	V401-160-0120-0	WASHER, SP/M12 Rondelle frein	2	
31-35	1366-708-0030-0	COLLAR/26 X 34 X 25 Entretoise	1	No. 1~1000
31-36	1370-706-2000-0	COVER, CASE Couverture	1	

Ref.No. Réf.Nº	Parts No. Pièces Nº	Description Désignation	Q'ty Quant	Remarks Remarques
31-37	1370-706-0010-0	PACKING, CASE COVER Joint	1	
31-38	V201-260-8016-0	BOLT/M8 x 16 Vis	8	
31-39	V401-160-0080-0	WASHER, SP/M8 Rondelle frein	8	
31-40	1366-706-0080-0	SHIM, HOLDER C/T = 0.27 Cale d'épaisseur	AR	
31-41	1370-709-0030-0	COLLAR /36 x 43 x 13 Bague d'appui	1	No. 1001 ~

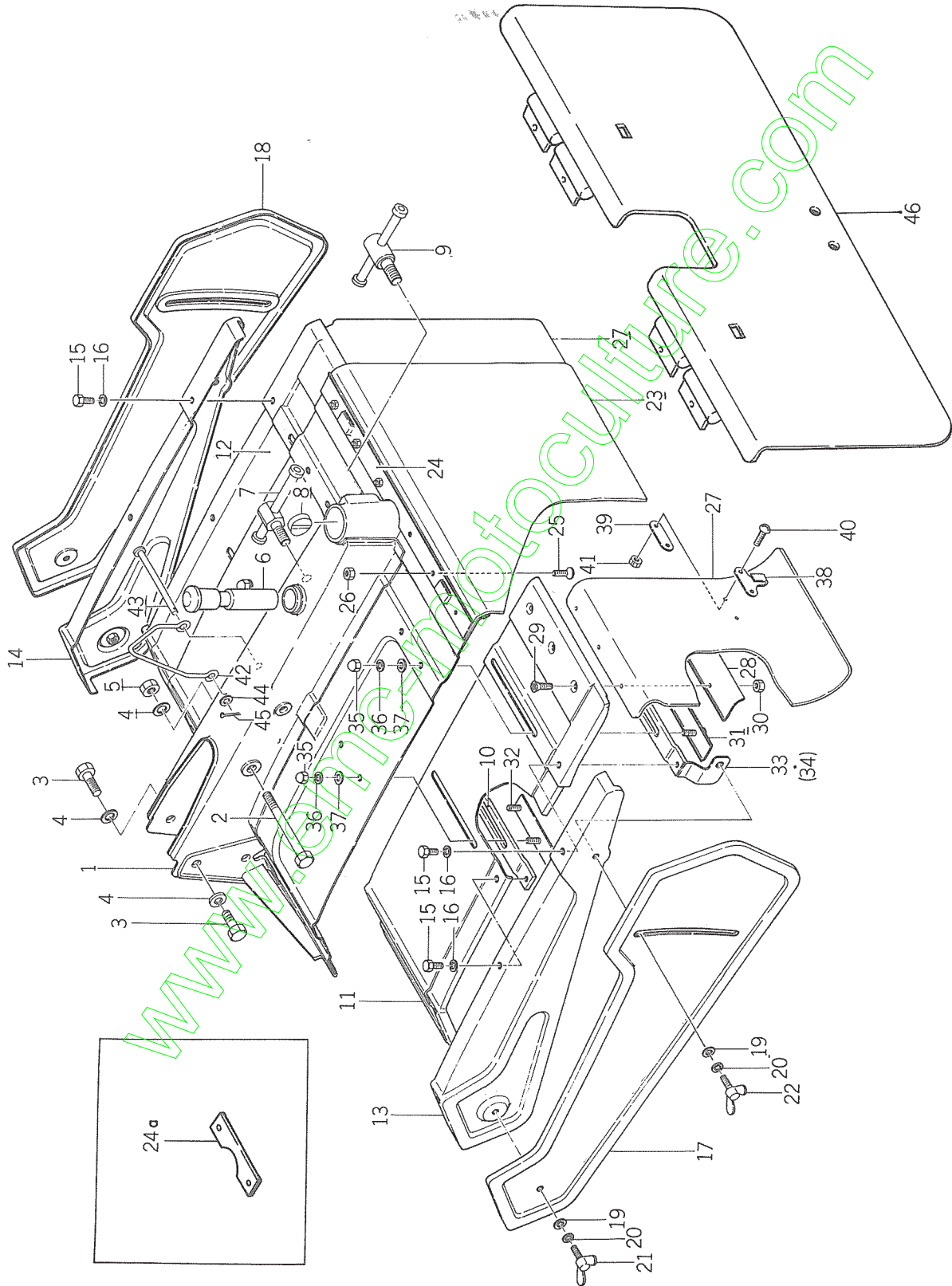
www.emc-motoculture.com

SERVICE MEMO

www.emc-motoculture.com

Fig.32 ROTARY FRAME

Enveloppe de rotobineuses



Ref.No. Réf.Nº.	Parts No. Pièces Nº.	Description Désignation	Q'ty Quant	Remarks Remarques
32- 1	1370-721-1000-0	FRAME, ROTARY Chassis	1	
32- 2	V201-261-2105-0	BOLT/M12 X 105 Vis	1	
32- 3	V201-261-2022-0	BOLT/M12 X 22 Vis	4	
32- 4	V401-160-0120-0	WASHER, SP/M12 Rondelle frein	5	
32- 5	V300-260-0120-0	NUT/M12 Ecou	1	
32- 6	1323-721-0030-0	CAP, SET PIPE Bouchon	1	
32- 7	1366-722-3000-0	BOLT, SET/M14 Vis serre-jambe	1	
32- 8	1370-722-0010-0	STOPPER, SLEEVE Coin de blocage	1	
32- 9	1370-722-1000-0	HANDLE, SLEEVE Vis serre-jambe	1	
32-10	1366-721-0030-0	PLATE, A Bride de bavolet	4	
32-11	1366-721-0010-0	COVER, ADJ LH Rallonge réglable G.	1	
32-12	1366-721-0020-0	COVER, ADJ RH Rallonge réglable D.	1	
32-13	1366-721-6000-0	COVER, SIDE LH Rallonge réglable G.	1	
32-14	1366-721-7000-0	COVER, SIDE RH Rallonge réglable D.	1	
32-15	V201-260-8012-0	BOLT/M8 X 12 Vis	6	
32-16	V401-160-0080-0	WASHER, SP/M8 Rondelle frein	6	
32-17	1366-722-1000-0	COVER, SUB SIDE LH Bavolet G.	1	Warm white
	1366-722-1000-1	COVER, SUB SIDE LH Bavolet G.	1	Ivory white
32-18	1366-722-2000-0	COVER, SUB SIDE RH Bavolet D.	1	Warm white
	1366-722-2000-1	COVER, SUB SIDE RH Bavolet D.	1	Ivory white
32-19	V413-160-0080-0	WASHER/M8 Rondelle	4	
32-20	V401-160-0080-0	WASHER, SP/M8 Rondelle frein	4	
32-21	V270-160-8018-0	BOLT, WING/M8 X 18 Vis a oreilles	2	
32-22	V270-160-8025-0	BOLT, WING/M8 X 25 Vis a oreilles	2	
32-23	1366-721-0040-0	GUARD, MUD A Bavette	1	
32-24	1370-721-0010-0	PLATE, GUARD SET A Barrette	1	No. 1~11900
32-24a	1366-721-0110-1	PLATE, GUARD SET C Barrette	1	No. 11901~
32-25	V112-160-6012-0	SCREW/M6 X 12 Vis	6	
32-26	V300-260-0060-0	NUT/M6 Ecou	6	
32-27	1366-721-0050-0	GUARD, MUD B Bavette	2	
32-28	1366-721-0070-0	PLATE, GUARD SET B Barrette	2	
32-29	V112-160-6012-0	SCREW/M6 X 12 Vis	6	
32-30	V300-260-0060-0	NUT/M6 Ecou	6	
32-31	1366-721-5000-0	PLATE, SET B Barrette	1	
32-32	1366-721-4000-0	PLATE, SET A Barrette	4	
32-33	1366-721-2000-0	PLATE, A LH Plaque	1	
32-34	1366-721-3000-0	PLATE, A RH Plaque	1	
32-35	V340-160-0080-0	NUT, CAP/M8 Ecou a tete de dome	12	

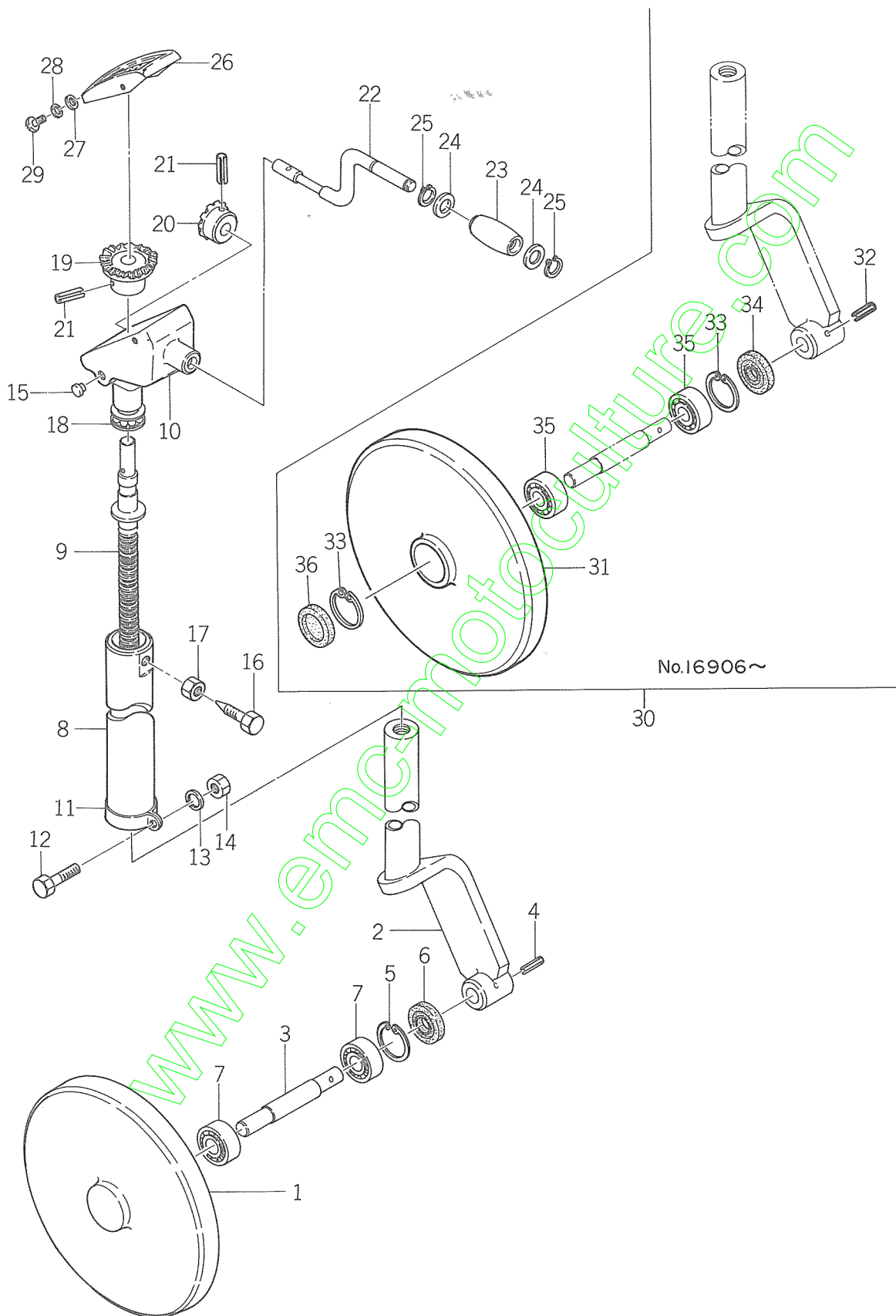
Ref.No. Réf.Nº.	Parts No. Pièces Nº.	Description Désignation	Q'ty Quant	Remarks Remarques
32-36	V401-160-0080-0	WASHER, SP/M8 Rondelle frein	12	
32-37	V413-160-0080-0	WASHER/M8 Rondelle	12	
32-38	1302-721-0020-0	HOOK, MUD GUARD Plaque de fixation	2	
32-39	1302-721-0030-0	WASHER, HOOK Rondelle frein	2	
32-40	V111-165-0010-0	SCREW/M5 X 10 Vis	4	
32-41	V300-260-0050-0	NUT/M5 Erou	4	
32-42	1366-721-0080-0	HANGER Crochet	1	
32-43	1366-721-0090-0	PIN/8 X 108 Goupille	1	
32-44	V413-160-0080-0	WASHER/M8 Rondelle	1	
32-45	V500-162-0016-0	PIN, SPLIT/2 X 16 Goupille elastique	1	
32-46	1366-721-8000-1	GUARD, R. Volet ar	1	No. 11901~

www.emc-motoculture.com

SERVICE MEMO

www.emc-motoculture.com

Fig.33 REAR WHEEL
Roue de profondeur



Ref.No. Réf.Nº.	Parts No. Pièces Nº.	Description Désignation	Q'ty Quant	Remarks Remarques
33- 1	1366-726-4000-0	WHEEL, GAUGE Roue arriere	1	No. 1~16905
33- 0-1	1366-072-2000-0	FORK, GAUGE WHEEL SET Fourche	1	△
33- 2	1366-726-3000-0	·FORK, GAUGE WHEEL Fourche	1	△
33- 3	1366-726-0050-0	·SHAFT, GAUGE WHEEL Manchon	1	
33- 4	1411-716-0070-0	PIN/E6 X 32 Goupille	1	
33- 5	V705-140-0350-0	RING, SNAP/C 35 Collet d'axe	1	No. 1~16905
33- 6	V744-115-3508-0	SEAL, OIL/TC15358 Bague d'étanchéité	1	
33- 7	V600-110-6202-0	BEARING, RB/6202 Roulement radial	2	
33- 8	1366-726-1000-0	SLEEVE, GAUGE WHEEL Jambe	1	
33- 9	1342-726-4001-0	SCREW, GAUGE WHEEL Vis de profondeur	1	
33-10	1366-726-2000-5	CASE, BEVEL Carter de roue	1	No. 1~6800
33-10a	1366-726-2001-0	CASE, BEVEL Carter de roue	1	No. 6801~
33-11	1330-726-0160-0	STRAP Serrage	1	
33-12	V201-261-0025-0	BOLT/M10 X 25 Vis	1	
33-13	V401-160-0100-0	WASHER, SP/M10 Rondelle frein	1	
33-14	V300-260-0100-0	NUT/M10 Ecrou	1	
33-15	1366-726-0060-0	CAP/8 Bouchon	2	
33-16	1366-726-0010-0	BOLT/M8 X 20 Vis	1	Point angle 90°
33-17	V302-260-0080-0	NUT/M8 Ecrou	1	
33-18	V610-215-1103-0	BEARING, TB/51103 Buttee a billes	1	
33-19	1411-716-0050-0	GEAR, BEVEL/14T Pignon conique	1	
33-20	1411-716-0020-0	PINION, BEVEL/12T Pignon conique	1	
33-21	V580-140-5028-0	PIN, SPRING/5 X 28 Goupille elastique	2	
33-22	1366-726-0040-0	HANDLE, GAUGE WHEEL Manivelle	1	No. 1~9900
33-22a	1366-726-0041-0	HANDLE, GAUGE WHEEL Manivelle	1	No. 9901~
33-23	1330-726-0120-0	GRIP Poignee	1	No. 1~9900
33-23a	2798-203-0020-0	GRIP, SWING HANDLE Poignee	1	No. 9901~
33-24	1330-726-0130-0	WASHER/13 X 18 X 2 Rondelle	2	
33-25	V704-140-0120-0	RING, SNAP/C 12 Collet d'axe	2	
33-26	1366-726-0020-0	COVER, BEVEL CASE Couvercle	1	
33-27	V410-160-0050-0	WASHER/M5 Rondelle	1	
33-28	V401-160-0050-0	WASHER, SP/M5 Rondelle frein	1	
33-29	V111-165-0010-0	SCREW/M5 X 10 Vis	1	
33-30	1366-072-2201-0	WHEEL, GAUGE A ASSY Roue arriere ensemble	1	
33-31	1366-726-4001-0	·WHEEL, GAUGE Roue arriere	1	
33-32	1411-716-0070-0	·PIN, GROOVED/6 X 32 Goupille	1	No. 16906~
33-33	V705-140-0350-0	·RING, SNAP/C35 Collet d'axe	2	
33-34	V744-115-3508-0	·SEAL, OIL/TC15358 Bague d'étanchéité	1	

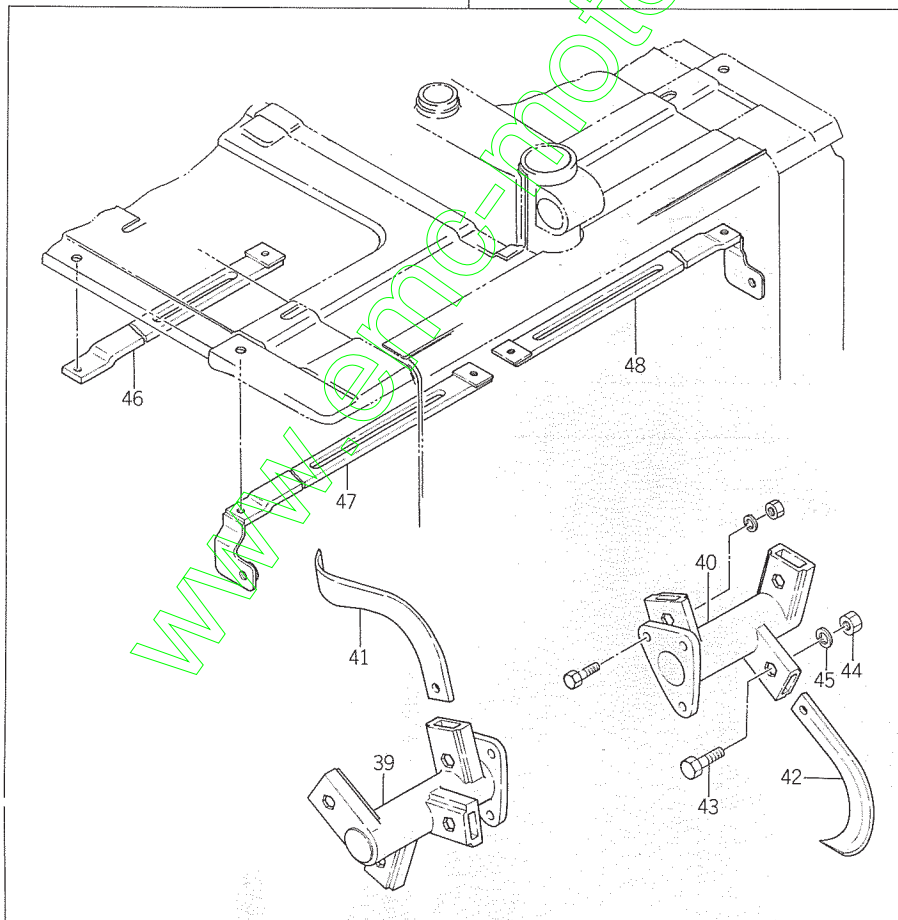
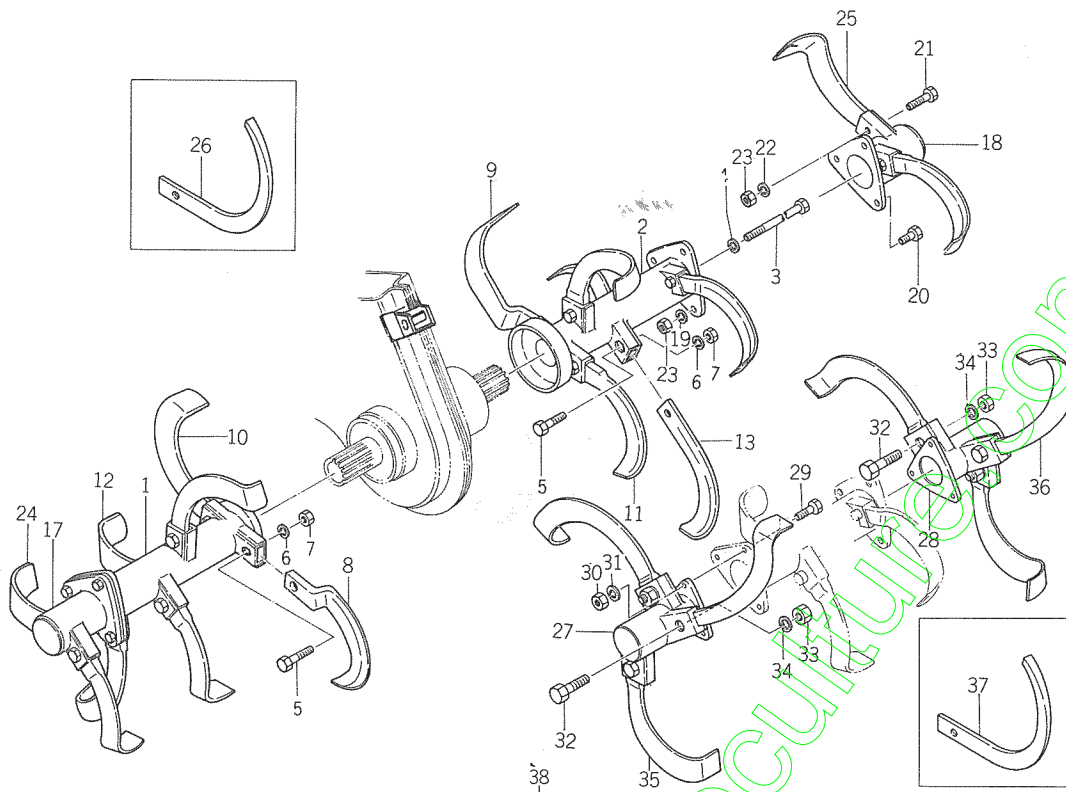
Ref.No. Réf.Nº	Parts No. Pièces Nº	Description Désignation	Q'ty Quant	Remarks Remarques
33-35	V600-110-6202-0	• BEARING, RB/6202 Roulement radial	2	} No. 16906~
33-36	1366-726-0070-0	• CAP, SEAL/35 X 5 Opécule	1	

www.emc-motoculture.com

SERVICE MEMO

www.emc-motoculture.com

Fig.34 ROTARY PIPE
Fraise



Ref.No. Réf.N°	Parts No. Pièces N°	Description Désignation	Q'ty Quant	Remarks Remarques
34- 1	1366-716-1001-0	PIPE, ROTARY LH Tube de fraise G.	1	
34- 2	1366-716-2001-0	PIPE, ROTARY RH Tube de fraise D.	1	
34- 3	V201-261-2130-0	BOLT/M12 X 130 S=130 Vis	2	
34- 4	V401-160-0120-0	WASHER, SP/M12 Rondelle frein	2	
34- 5	1376-075-7100-0	BOLT & NUT SET/M10 X 25 Vis & écrou	12	With nut & S. W
34- 6	V401-160-0100-0	•WASHER, SP/M10 Rondelle frein	12	
34- 7	V300-260-0100-0	•NUT/M10 Écrou	12	
34- 8	1376-716-0030-0	BLADE, LH/C246 Hoyau G.	1	Jeu complet
34- 9	1376-716-0040-0	BLADE, RH/C246 Hoyau D.	1	
34-10	1376-716-0010-0	BLADE, CENTER LH/C245 Hoyau central G.	1	
34-11	1376-716-0020-0	BLADE, CENTER RH/C245 Hoyau central D.	1	
34-12	1376-716-0050-0	BLADE, LH/C135 Hoyau G.	6	
34-13	1376-716-0060-0	BLADE, RH/C135 Hoyau D.	6	
34-14	1352-716-0070-0	BLADE, ANGLE LH/A206 Couteau G.	1	★
34-15	1352-716-0080-0	BLADE, ANGLE RH/A206 Couteau D.	1	★
34-16	1352-716-0090-0	BLADE, ANGLE/A106 Couteau	10	★
34-17	1366-717-1001-0	PIPE, ROTARY LH/60 Rallonge G.	1	
34-18	1366-717-2001-0	PIPE, ROTARY RH/60 Rallonge D.	1	
34-19	V401-260-0100-0	WASHER, SP/M10 Rondelle frein	6	
34-20	V201-261-0025-0	BOLT/M10 X 25 Vis	6	
34-21	1376-075-7100-0	BOLT & NUT SET/M10 X 25 Vis & écrou	4	With nut & S. W
34-22	V401-260-0100-0	•WASHER, SP/M10 Rondelle frein	10	
34-23	V300-260-0100-0	•NUT/M10 Écrou	10	
34-24	1376-716-0050-0	BLADE, LH/C135 Hoyau G.	2	
34-25	1376-716-0060-0	BLADE, RH/C135 Hoyau D.	2	
34-26	1352-716-0090-0	BLADE, ANGLE/A106 Couteau	4	★
34- 0-1	1370-071-3000-0	PIPE, ROTARY SUB SET/66 Rallonge ensemble	1	★
34-27	1366-718-1001-0	•PIPE, ROTARY LH/66 Rallonge G.	1	★
34-28	1366-718-2001-0	•PIPE, ROTARY RH/66 Rallonge D.	1	★
34-29	V201-261-0025-0	•BOLT/M10 X 25 Vis	6	★
34-30	V300-260-0100-0	•NUT/M10 Écrou	6	★
34-31	V401-260-0100-0	•WASHER, SP/M10 Rondelle frein	6	★
34-32	1376-075-7100-0	•BOLT & NUT SET Vis & écrou	6	With nut & S. W.★
34-33	V300-260-0100-0	•• NUT/M10 Écrou	6	★
34-34	V401-260-0100-0	•• WASHER, SP/M10 Rondelle frein	6	★
34-35	1376-716-0050-0	•• BLADE, LH/C135 Hoyau G.	3	★
34-36	1376-716-0060-0	•BLADE, RH/C135 Hoyau	3	★
34-37	1352-716-0090-0	BLADE, ANGLE/A106 Couteau	6	★

Ref.No. Réf.Nº	Parts No. Pièces Nº	Description Désignation	Q'ty Quant	Remarks Remarques
34-38	1370-719-2000-0	ROTARY SET/7.5 Rallonge ensemble	1	★
34-39	1366-719-1001-0	• PIPE, ROTARY LH/75 Rallonge G.	1	★
34-40	1366-719-2001-0	• PIPE, ROTARY RH/75 Rallonge D.	1	★
34-41	1376-716-0050-0	• BLADE, LH/C135 Hoyau G.	4	★
34-42	1376-716-0060-0	• BLADE, RH/C135 Hoyau D.	4	★
34-43	1376-754-0240-0	• BOLT/M10 X 25 Vis	8	★
34-44	V300-260-0100-0	• NUT/M10 Ecroû	8	★
34-45	V401-160-0100-0	• WASHER, SP/M10 Rondelle frein	8	★
34-46	1366-719-3000-0	• PLATE/75 Bride de bavolet	4	★
34-47	1366-719-4000-0	• PLATE, LH/75 Bride de bavolet G.	1	★
34-48	1366-719-5000-0	• PLATE, RH/75 Bride de bavolet D.	1	★

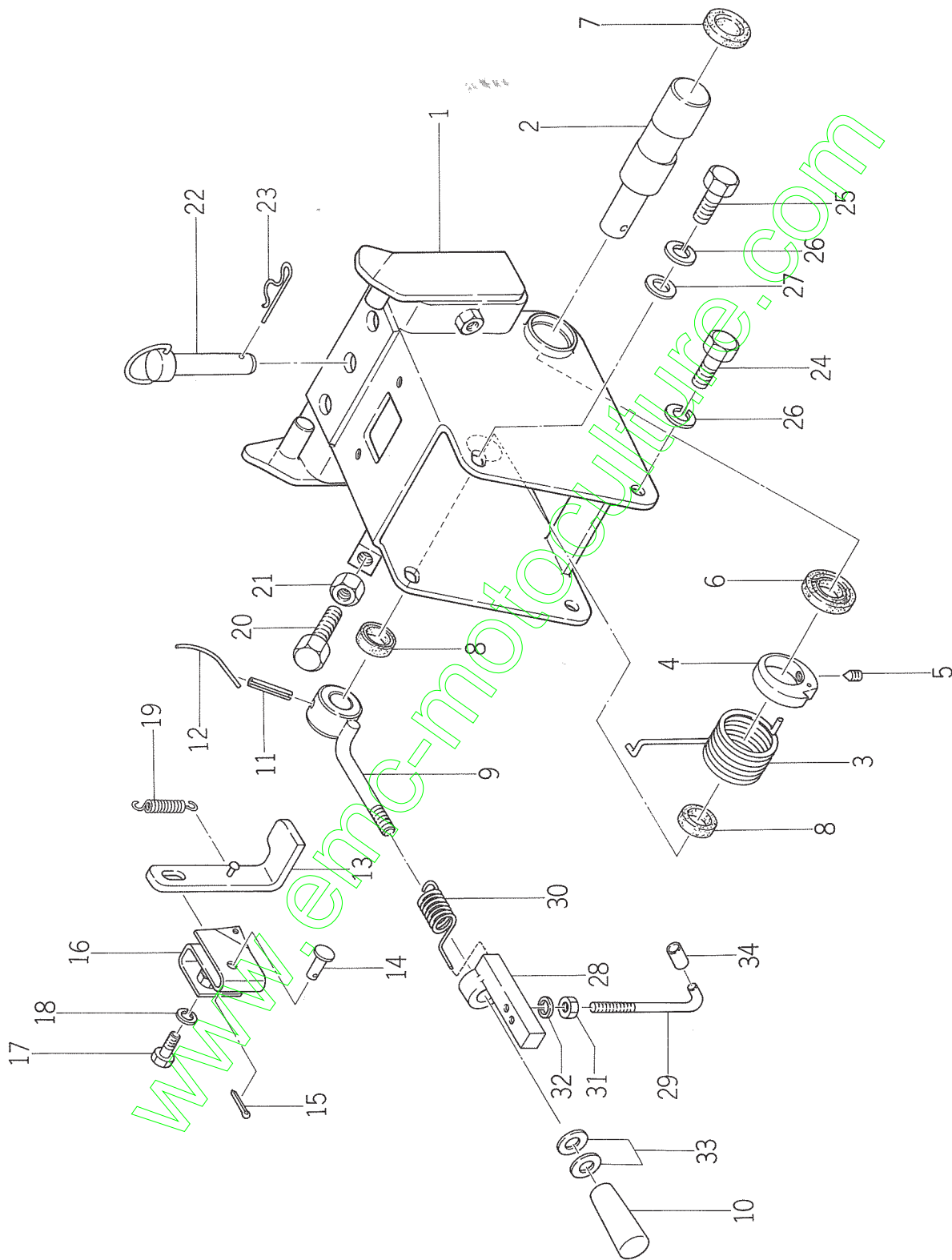
www.emc-motoculture.com

SERVICE MEMO

www.enc-motoculture.com

Fig.35 REAR HITCH

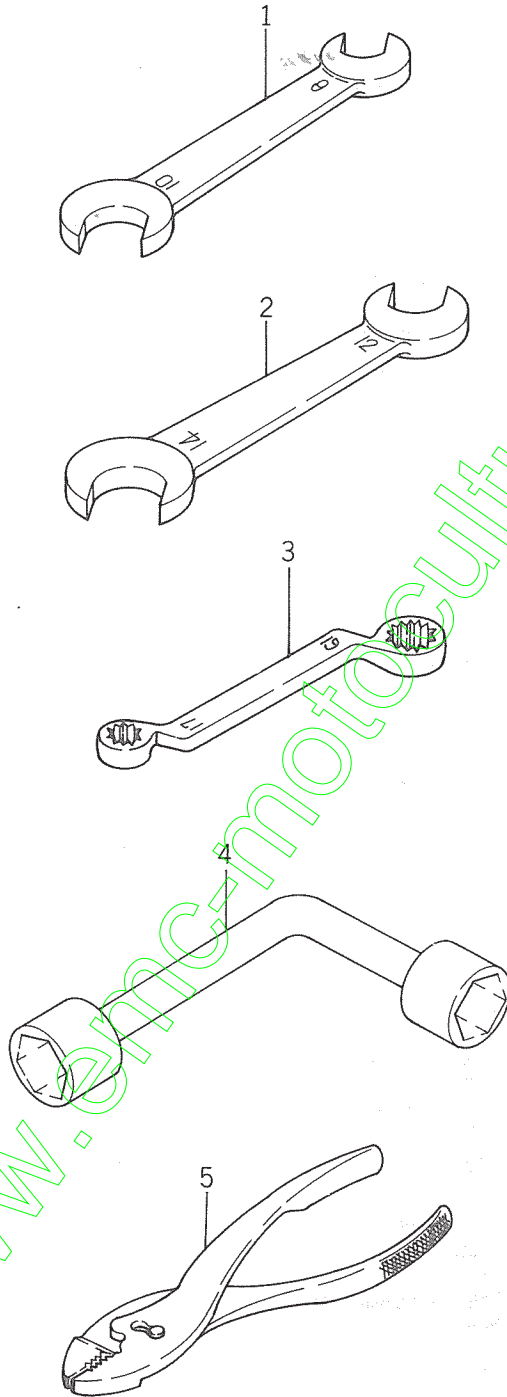
Attelage



Ref.No. Réf.Nº.	Parts No. Pièces Nº.	Description Désignation	Q'ty Quant	Remarks Remarques
35- 1	1366-930-1001-0	HITCH, R. Attelage ar.	1	
35- 2	1366-930-0010-0	SHAFT, CAM Arbre a cames	1	
35- 3	1366-930-0030-0	SPRING, TORQUE/70 Ressort de torsion	1	
35- 4	1366-930-0020-0	RATCHET Cliquet	1	
35- 5	V182-168-0010-0	SCREW/M8 x 10 Vis	1	
35- 6	V743-130-4005-0	SEAL, OIL/VB30405 Bague d'étanchéité	1	
35- 7	1340-253-0020-0	CAP, SEAL/35 Opércule	1	
35- 8	V743-120-2606-0	SEAL, OIL/VB20266 Bague d'étanchéité	2	
35- 9	1366-930-2000-0	LEVER Lever d'embrayage	1	
35-10	1338-401-0050-0	KNOB, LEVER/24 x 57 Poignée	1	
35-11	V580-140-6036-0	PIN, SPRING/6 x 36 Goupille elastique	1	
35-12		WIRE/0,9 x 110 Fil	1	
35-13	1366-930-3000-0	HOOK, RATCHET Attache de ressort	1	
35-14	3560-203-0020-0	PIN, ROD Axe	1	
35-15	V500-153-0012-0	PIN, SPLIT/3 x 12 Goupille fendue	1	
35-16	1366-930-4000-0	HOLDER, HOOK Crochet de attache	1	
35-17	V201-260-8016-0	BOLT/M8 x 16 Vis	1	
35-18	V401-160-0080-0	WASHER, SP/M8 Rondelle frein	1	
35-19	1302-211-0300-0	SPRING, BRAKE SHOE Ressort	1	
35-20	W201-261-2063-0	BOLT/M12 x 63 S = 63 Vis	1	
35-21	V300-260-0120-0	NUT/M12 Ecrou	1	
35-22	1301-100-9010-0	PIN, RING SET Broche	1	
35-23	1305-931-0030-0	PIN, HAIR Attache beta	1	
35-24	V201-461-4025-0	BOLT/M14 x 25 9T Vis	2	
35-25	V201-461-4028-0	BOLT/M14 x 28 9T Vis	2	
35-26	V401-160-0140-0	WASHER, SP/M14 Rondelle frein	4	
35-27	V413-160-0140-0	WASHER/M14 Rondelle	2	No. 1~5300
35-27a	1366-930-0060-0	WASHER/15 x 32 x 5 Rondelle	2	No. 5301~
35-28	1366-930-5000-0	LEVER, LOCK Lever de rochet	1	
35-29	1366-930-0040-0	HOOK Pastille	1	
35-30	1366-930-0050-0	SPRING, TORQUE/14 Ressort de torsion	1	
35-31	V300-260-0080-0	NUT/M8 Ecrou	1	
35-32	V401-160-0080-0	WASHER, SP/M8 Rondelle frein	1	
35-33	V413-160-0100-0	WASHER/M10 Rondelle	2	
35-34	V735-071-0012-0	PIPE/VINYL 7 x 10 x 12 Tuyau	1	

Fig.36 TOOLS

Outils



www.enccmotoculture.com

Ref.No. Réf.Nº	Parts No. Pièces Nº	Description Désignation	Q'ty Quant	Remarks Remarques
36- 1	V920-550-8010-0	SPANNER/8-10 Cle plate	1	No. 6801~
36- 2	V920-551-2014-0	SPANNER/12-14 Cle plate	1	
36- 3	1401-906-0050-0	WRENCH/17-19 Cle a douille	1	No. 6801~
36- 4	1317-906-0010-0	SPANNER, BOX/L 10-14 Cle a pipe	1	
36- 5	V936-250-0150-0	PLIERS/150 Pinces	1	

www.emc-motoculture.com

Ref.No. Réf.Nº.	Parts No. Pièces Nº.	Description Désignation	Q'ty Quant	Remarks Remarques
37- 1	1370-961-0010-0	MARK, CHANGE Repere de vitesses	1	
37- 2	1382-901-0030-0	MARK, PET Etiquette	1	
37- 3	W296-202-4074-0	RIVET, BLIND Rivet	16	
37- 4	1370-961-0020-0	MARK, MAIN CLUTCH A Etiquette	1	
37- 5	V291-202-0006-0	RIVET/2 X 6 Rivet	2	
37- 6	1370-962-0010-0	MARK, MODEL Plaquette	1	
37- 7	1382-902-0020-0	MARK, NEUTRAL Etiquette	1	
37- 8	1370-962-0020-0	MARK, STAND Etiquette	1	
37- 9	1366-902-0180-0	MARK, SWITCH Etiquette	1	
37-10	1368-953-0010-0	MARK, CAUTION A Etiquette	1	
37-11	1368-953-0020-0	MARK, CAUTION B Etiquette	1	
37-12	1324-957-0120-0	MARK, CAUTION B Etiquette	1	
37-13	1355-953-0010-0	MARK, MAIN CLUTCH B Repere d'embrayage	1	
37-14	1370-962-0030-0	MARK, MAIN CLUTCH B Repere d'embrayage	1	
37-15	1370-962-0040-0	MARK, MAGIC LIFT Etiquette	1	
37-16	1364-902-0090-0	TAG, MAGIC LIFT Etiquette	1	
37-17	1370-963-0010-0	MARK, BEVEL CASE Etiquette	1	
37-18	1366-902-0040-0	MARK, ROTARY MODEL A Etiquette	1	
37-19	1370-903-0010-0	MARK, ROTARY MODEL B Etiquette	1	
37-20	1326-953-0070-0	MARK, ISEKI Etiquette ISEKI	2	
37-21	1349-956-0060-0	MARK, ROTARY OIL Etiquette d'huile	1	
37-22	1370-963-0020-0	MARK, COUNTER CASE Etiquette	1	

www.emc-motoculture.com



**Yvan Béal - 21, av. de l'Agriculture - B.P. 16
Z.I. du Brézet - 63014 Clermont-Ferrand Cedex 2
Tél : 04 73 91 93 51 - Télécopie : 04 73 90 23 11
www.yvanbeal.fr - E-mail : info@yvanbeal.fr
R.C.S. Clermont-Fd B 304 973 886 - S.A.S. au capital de 612 000 €**