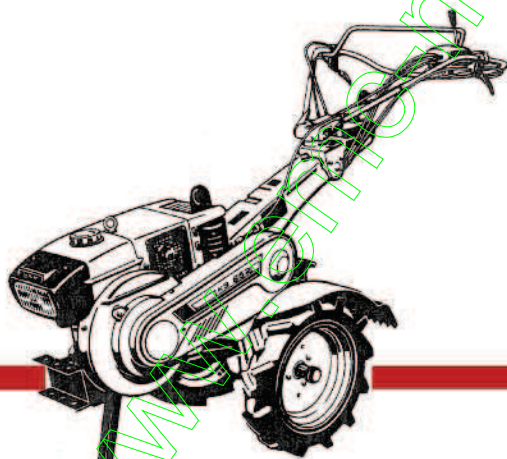




PIECES DETACHEES

Motoculteur



KS652 DIESEL



Yves Béal 21, Av. de l'Agriculture - B.P. 10
Z.I. du Bécou 63014 Clermont-Ferrand Cedex 2
Tel: 04 73 91 93 51 Téléphone: 04 73 90 23 11
www.yvesbeal.fr Email: info@yvesbeal.fr
R.C. B 304 973 886 - SIREN 304 973 886

1300-098-0130-0 - nov 83

03-000251-050318

HOW TO USE THIS PARTS CATALOGUE

CATALOGUE CONSTRUCTION

Ref. No. Réf. No.	Parts No. Pièces No.	Description Désignation	Q'ty Quant.	Remarks Remarques
A	B	C	D	E

- A. Ref. No. : It is a reference number to find parts in the drawings.
- B. Parts No. : Every part has its own 12-digit code number with which it is computer-controlled.
Parts which have "V" at their code numbers' head are purchasable in the market.
- C. Description : Names, sizes, functions and other meanings of parts are found in this column.
"LH" and "RH" of parts are given by facing to the tractor-moving-forward direction or looking at them mounted on the tractor.
Components of an assembled part (ASS'Y or SET) are listed set in from ASS'Y or SET name and headed with " • " as in the following example:
- (Example)
- MUFFLER ASS'Y

 - COVER, MUFFLER
 - COVER, MUFFLER
 - BOLT
 - WASHER, SP
 - COVER, EXH PIPE

— Components of
MUFFLER ASS'Y
- Abbreviations which are used in this column are explained in Table page 4.
- D. Q'ty : This column specifies the quantity of a part required for one tractor. "AR" is the abbreviation of "AS REQUIRED."

CONTENTS

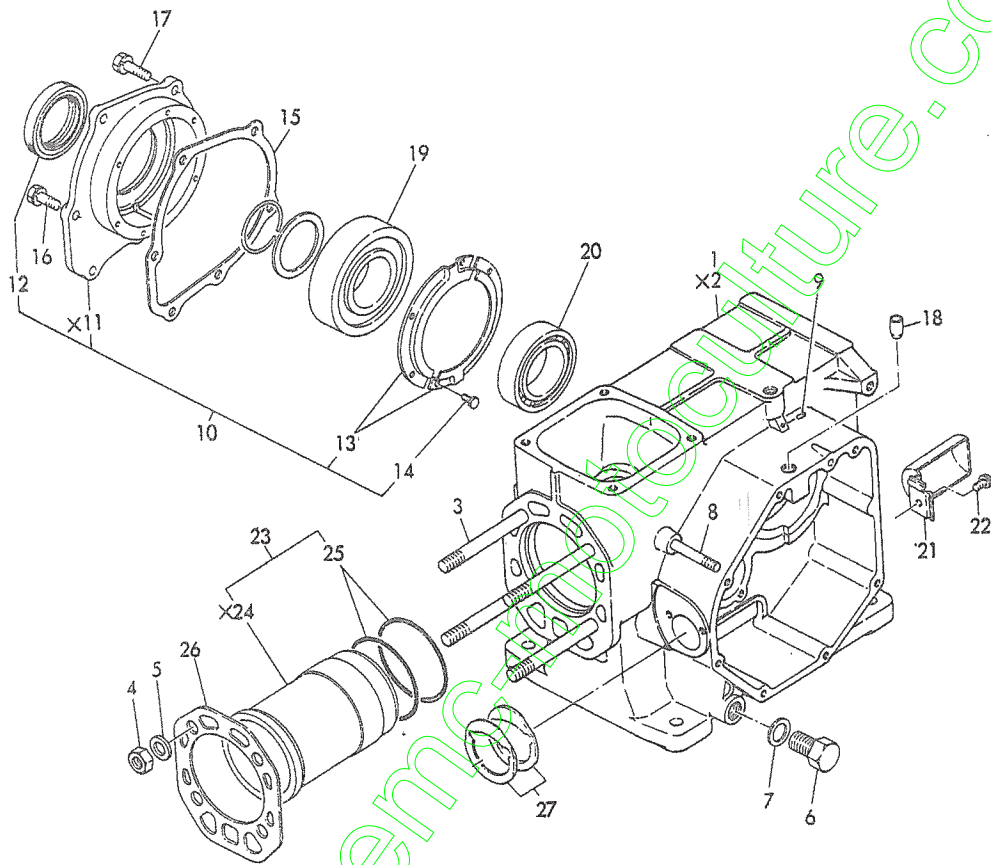
KS652-DHE CHASSIS

		PAEG
Fig. 1	FRAME and FENDER	37
Fig. 2	MAIN GEAR CASE	39
Fig. 3	TRANSMISSION GEAR	41
Fig. 4	SHIFTER	43
Fig. 5	SUB TRANSMISSION	45
Fig. 6	TENSION and BRAKE SYSTEM	47
Fig. 7	HANDLE FRAME	49
Fig. 8	HANDLE REVOLUTION ASSY	51
Fig. 9	CONTROL LEVER	53
Fig. 10	WHEEL	55
Fig. 11	MARKS	57
Fig. 12	TOOLS	58

ENGINE

www.emc-motoculture.com

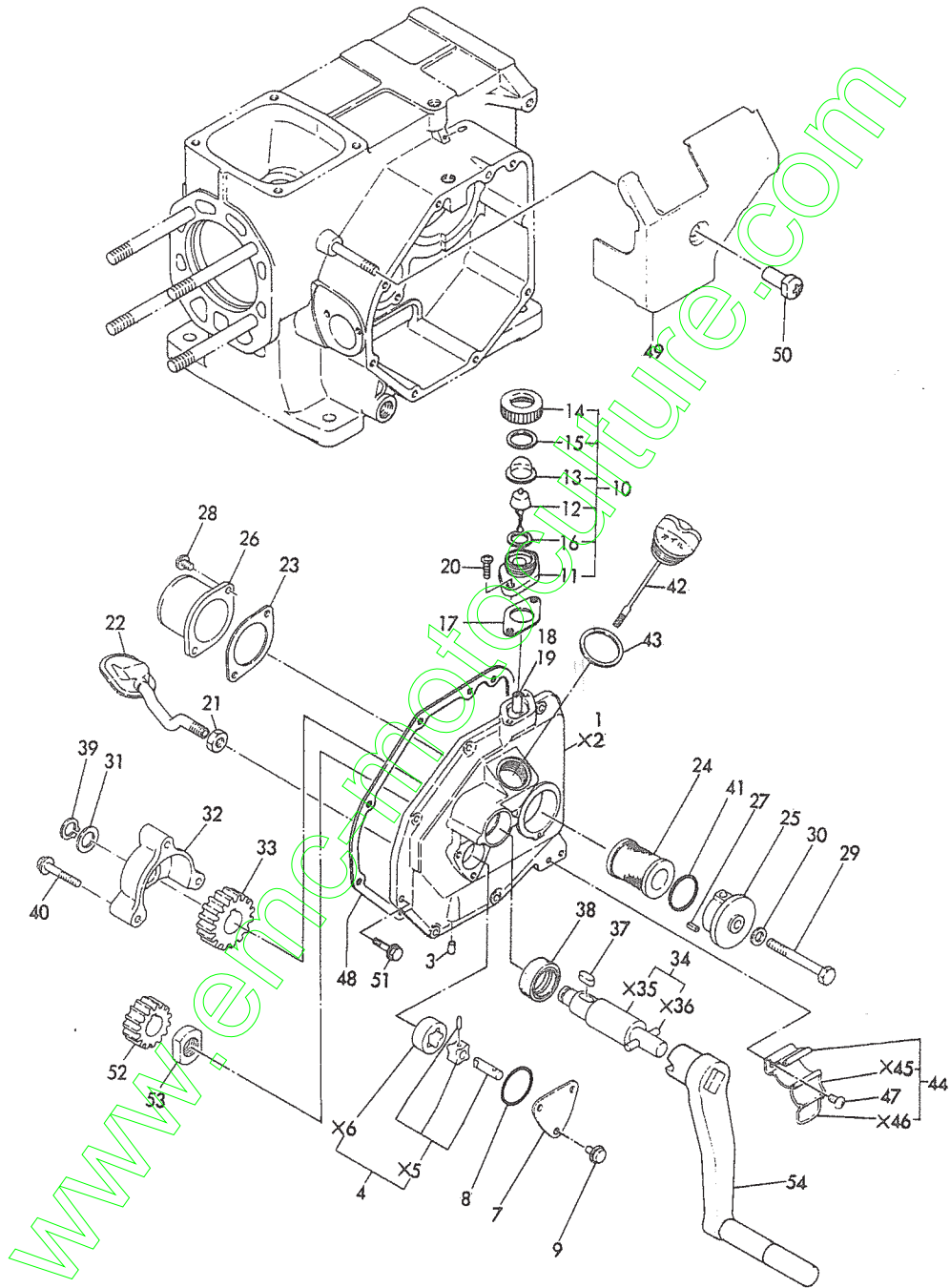
Fig. 1 CYLINDER BODY



www.encyclopedia.com

Ref.No.	Parts No.	Description	Qty	Remarks
1- 1	5986-100-0156-1	BODY ASSY CYL	1	706100-01561
1- 2		BODY, CYL	1	△
1- 3	5906-100-0120-0	BOLT, HEAD	4	106100-01200
1- 4	5921-450-0122-0	NUT	4	121450-01220
1- 5	5904-200-0124-0	WASHER	4	104200-01240
1- 6	5905-425-0169-0	PLUG, DRAIN	1	105425-01690
1- 7	5834-005-0049-0	WASHER, SEAL/16	1	43400-500490
1- 8	5962-160-8050-2	BOLT, STUD/M8X50	1	26216-080502
1- 9	5872-210-2008-0	PLUG/2X8	1	27221-020080
1-10	5986-100-0250-1	METAL ASSY	1	706100-02501
1-11		METAL	2	△
1-12	5901-158-0222-0	SEAL, OIL	1	101158-02220
1-13	5906-100-0233-1	RETAINER	2	106100-02331
1-14	5961-160-5008-2	BOLT/M5X8	6	26116-050082
1-15	5904-100-0202-0	PACKING	1	104100-02020
1-16	5960-130-8022-2	BOLT/M8X22	5	26013-080222
1-17	5960-130-8028-2	BOLT/M8X28	1	26013-080282
1-18	5906-100-6153-0	BUSHING	1	106100-61530
1-19	5906-100-0230-0	BEARING/6308-C3	1	106100-02300
1-20	5906-100-0231-0	BEARING/NF208-C3	1	106100-02310
1-21	5906-100-0810-0	MEAL, HANDLE SET	1	106100-08100
1-22	5960-220-6012-2	SCREW/M6X12	1	26022-060122
1-23	5985-140-0190-0	LINNER ASSY, CYL	1	705140-01900
1-24		LINNER, CYL	1	△
1-25	5901-104-0130-0	PACKING	2	101104-01300
1-26	5904-104-0133-0	GASKET, HEAD	1	104100-01330
1-27	5904-200-5423-0	SHIM COM, ADJUST	1	104200-54230

Fig. 2 SIDE COVER

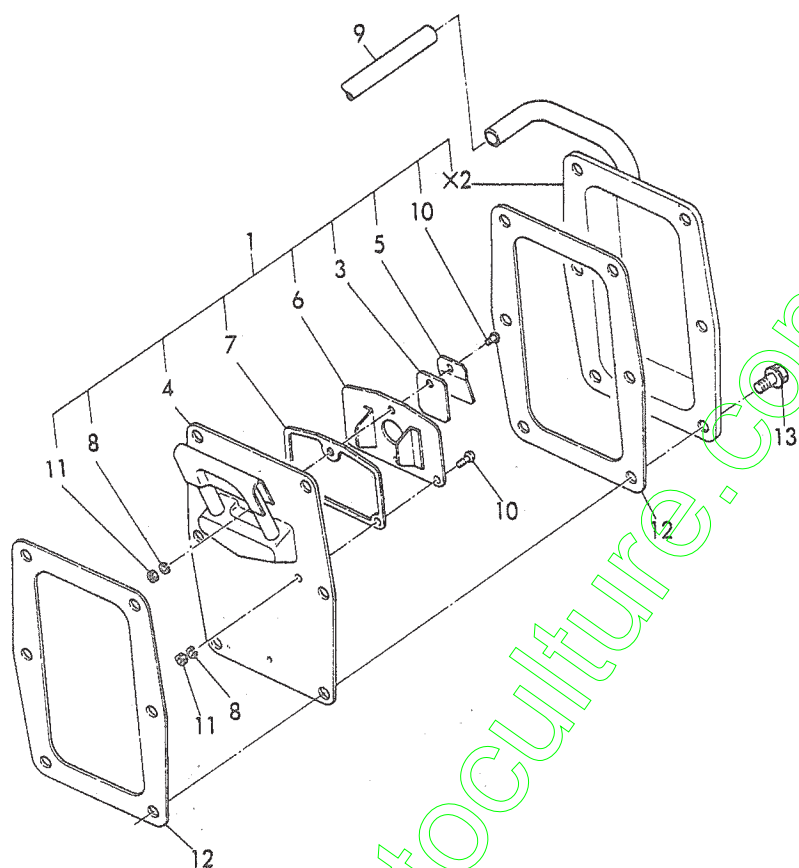


Ref.No.	Parts No.	Description	Qty	Remarks
2- 1	5986-100-0150-0	COVER ASSY, SIDE	1	706100-01500
2- 2		COVER, SIDE	1	△
2- 3	5872-250-6010-0	PLUG/6×10	1	27225-060100
2- 4	5904-300-3215-0	LOTOR COMP	1	104300-32150
2- 5		LOTOR COMP, INNER	1	△
2- 6		LOTOR, AUTER	1	△
2- 7	5903-338-3207-0	COVER	1	103338-32070
2- 8	5903-338-3257-0	O-RING	1	103338-32570
2- 9	5961-060-6012-2	BOLT/M6×12	3	26106-060122
2-10	5984-200-3450-0	OILER ASSY	1	704200-34500
2-11	5904-200-3450-0	BODY, OILER	1	104200-34500
2-12	5901-200-3452-0	ROTOR, OILER	1	101200-34520
2-13	5901-200-3453-0	GLASS, OILER	1	101200-34530
2-14	5903-884-3454-0	RETAINER, OILER GLASS	1	103884-34540
2-15	5972-200-3455-0	PACKING	1	172200-34550
2-16	5972-200-3456-0	PACKING	1	172200-34560
2-17	5904-200-3451-0	PACKING	1	104200-34510
2-18	5901-200-3459-0	GUIDE	1	101200-34590
2-19	5904-100-3460-0	PIPE	1	104100-34600
2-20	5965-570-6016-2	SCREW/M6×16	2	26557-060162
2-21	5904-200-3507-0	NUT, LOCK	1	104200-35070
2-22	5906-200-3509-0	PIPE COMP., SUCTION	1	106200-35090
2-23	5904-200-3512-0	PACKING	1	104200-35120
2-24	5904-200-3515-0	FILTER	1	104200-35150
2-25	5904-200-3526-0	CAP	1	104200-35260
2-26	5904-200-3527-0	CASE	1	104200-35270
2-27	5933-510-2000-8	PIN, SPRING/20A	1	22351-020008
2-28	5960-220-6014-2	SCREW/M6×14	2	26022-060142
2-29	5961-060-8060-2	BOLT/M8×60	1	26106-080602
2-30	5834-005-0041-0	WASHER, SEAL/8S	1	43400-500410
2-31	5972-200-1127-1	COLLOR	1	172200-11271
2-32	5904-100-7630-1	BASE, SET	1	104100-76301
2-33	5904-200-7633-0	GEAR, STARTER	1	104200-76330
2-34	5986-100-7690-0	STARTER SHAFT ASSY	1	706100-76900
2-35		SHAFT, STARTER	1	△
2-36		PIN	1	△
2-37	5901-400-7649-0	KEY	1	101400-76490
2-38	5905-140-7650-0	SEAL, OIL	1	105140-76500
2-39	5932-420-0014-0	RING, SNAP/C 14	1	22242-000140
2-40	5961-060-6035-2	BOLT/M6×35	3	26106-060352
2-41	5953-410-0044-0	O-RING/1A S44.0	1	24341-000440
2-42	5904-200-0175-0	CAP	1	104200-01750
2-43	5901-104-0176-0	PACKING	1	101104-01760
2-44	5984-200-0851-0	SPRING ASSY, HANDLE SET	1	704200-08510
2-45		RETAINER A	1	△

Ref.No.	Parts No.	Description	Qty	Remarks
2-46		RETAINER B	1	△
2-47	5965-570-6008-2	SCREW/M6×8	2	26557-060082
2-48	5904-100-0141-0	PACKING	1	104100-01410
2-49	5906-100-0142-0	COVER, SIDE	1	106100-01420
2-50	5906-100-0177-0	GRIP	1	106100-01770
2-51	5961-060-6020-2	BOLT/M6×20	8	26106-060202
2-52	5904-200-7640-0	GEAR, STARTER	1	104200-76400
2-53	5904-300-7646-0	NUT	1	104300-76460
2-54	5906-100-7679-0	HANDLE COMP, STARTER	1	106100-76790

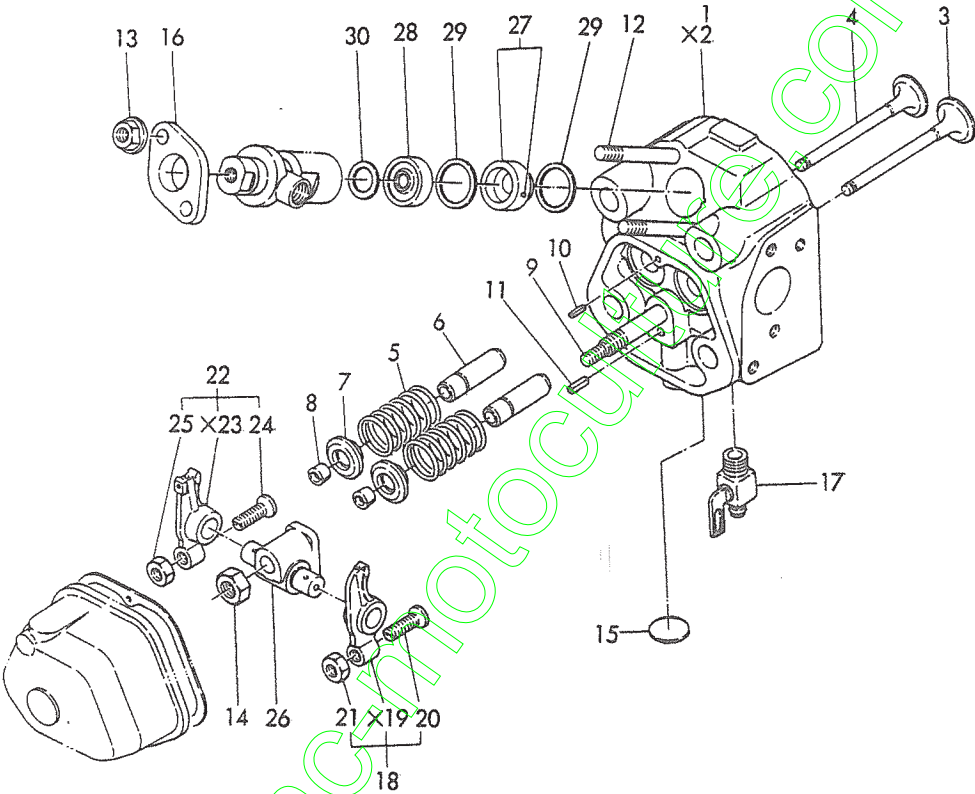
www.emc-motoculture.com

Fig. 3 REAR COVER



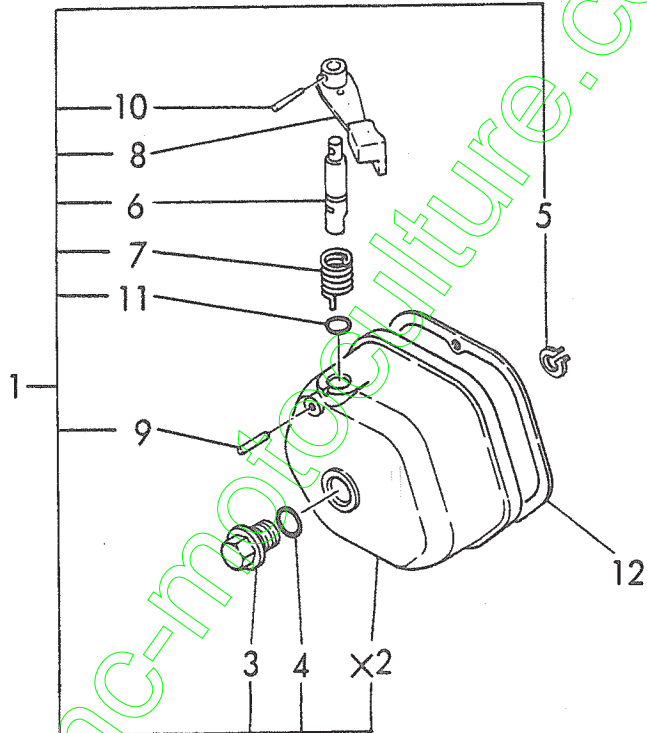
Ref.No.	Parts No.	Description	Qty	Remarks
3- 1	5984-104-0152-0	COVER ASSY, REAR	1	704104-01520
3- 2		COVER, REAR	1	△
3- 3	5904-104-0306-0	VALVE, RETURN	1	104104-03060
3- 4	5905-140-0308-0	PLATE	1	105140-03080
3- 5	5904-104-0311-0	RETAINER	1	104104-03110
3- 6	5904-104-0312-0	PLATE, SET	1	104104-03120
3- 7	5904-104-0313-0	PACKING	1	104104-03130
3- 8	5932-170-4000-0	WASHER, SPRING/M4	3	22217-040000
3- 9	5940-640-9035-0	PIPE, VINYL/9×350	1	23064-090350
3-10	5965-570-4010-2	SCREW/M4×10	3	26557-040102
3-11	5967-160-4000-2	NUT/M4	3	26716-040002
3-12	5904-200-0149-0	PACKING	2	104200-01490
3-13	5961-060-6012-2	BOLT/M6×12	6	26106-060122

Fig. 4 CYLINDER HEAD



Ref.No.	Parts No.	Description	Qty	Remarks
4- 1	5984-107-1170-1	HEAD ASSY, CYL	1	704107-11701
4- 2		HEAD, CYL	1	△
4- 3	5904-100-1110-0	VALVE, INLET	1	104100-11100
4- 4	5904-100-1111-0	VALVE, EXHAUST	1	104100-11110
4- 5	5904-100-1112-0	SPRING, VALVE	2	104100-11120
4- 6	5905-282-1116-0	GUIDE, VALVE	2	105282-11160
4- 7	5904-200-1118-0	RETAINER, SPRING	2	104200-11180
4- 8	5873-100-7000-1	SPLIT, COLLAR	2	27310-070001
4- 9	5906-100-1135-0	BOLT, STUD	1	106100-11350
4-10	5933-510-4001-0	PIN, SPRING/40A	1	22351-040010
4-11	5933-510-6001-2	PIN, SPRING/60A	1	22351-060012
4-12	5962-160-8070-2	BOLT, STUD/M8x70	2	26216-080702
4-13	5963-660-8000-2	NUT/M8	2	26366-080002
4-14	5966-061-0000-2	NUT/M10	1	26606-100002
4-15	5872-312-2000-0	PLUG/22	1	27231-220000
4-16	5901-147-1190-0	RETAINER	1	101147-11900
4-17	5904-200-1192-0	COCK	1	104200-11920
4-18	5985-140-1165-0	ARM ASSY, INLET	1	705140-11650
4-19		ARM, INLET	1	△
4-20	5901-158-1123-0	BOLT, ADJUST	1	101158-11230
4-21	5967-560-8000-2	NUT/M8	1	26756-080002
4-22	5985-140-1166-0	ARM, ASSY, EXHAUST	1	705140-11660
4-23		ARM, EXHAUST	1	△
4-24	5901-158-1123-0	BOLT, ADJUST	1	101158-11230
4-25	5967-560-8000-2	NUT/M8	1	26756-080002
4-26	5904-100-1126-0	SUPPORT	1	104100-11260
4-27	5906-152-1140-0	CHAMBER, FRONT	1	106152-11400
4-28	5905-015-1141-0	CHAMBER, REAR	1	105015-11410
4-29	5924-950-1145-0	PACKING	2	124950-11450
4-30	5905-025-1149-0	PROTECTOR	1	105025-11490

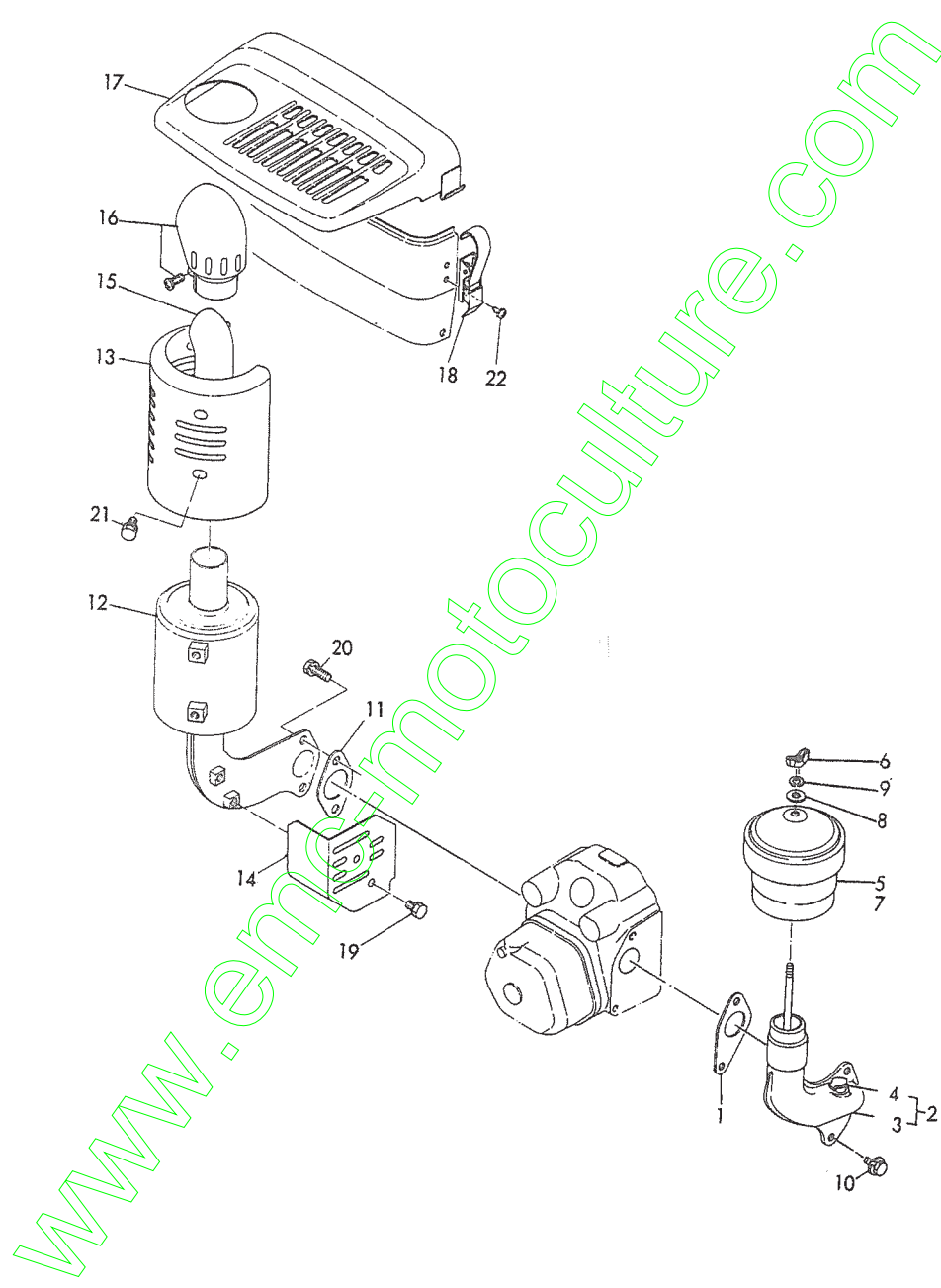
Fig. 5 BONNET



Ref.No.	Parts No.	Description	Qty	Remarks
5- 1	5986-154-1152-0	BONNET ASSY	1	706154-11520
5- 2		BONNET	1	△
5- 3	5904-200-1136-0	BOLT	1	104200-11360
5- 4	5904-200-1185-0	O-RING	1	104200-11850
5- 5	5932-420-0014-0	RING, SNAP/14	1	22242-000140
5- 6	5904-200-0360-0	SHAFT, DECOMPRESSOR	1	104200-03600
5- 7	5904-200-0364-1	SPRING	1	104200-03641
5- 8	5904-104-0375-0	LEVER	1	104104-03750
5- 9	5933-120-3018-0	PIN/3×18	1	22312-030180
5-10	5933-220-3018-0	PIN, TAPER/3×18	1	22322-030180
5-11	5953-110-0007-0	O-RING/1A P7.0	1	24341-000070
5-12	5904-100-1131-0	PACKING	1	104100-11310

www.emc-motoculture.com

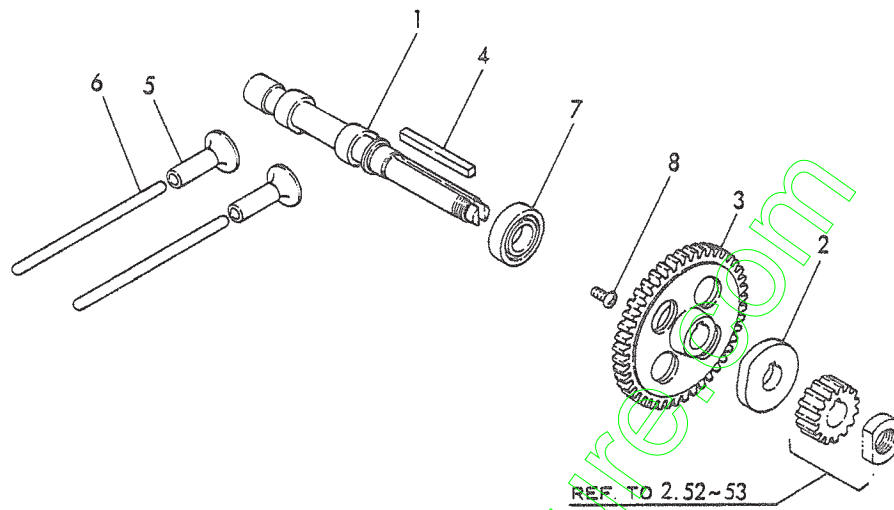
Fig. 6 AIR CLEANER & SILENCER



Ref.No.	Parts No.	Description	Qty	Remarks
6- 1	5906-100-1205-0	PACKING, INLET PIPE	1	106100-12050
6- 2	5906-148-1209-0	PIPE COMP, INLET	1	106148-12090
6- 3		PIPE, INLET	1	△
6- 4	5904-200-1203-0	CUP, OIL	1	104200-12030
6- 5	5906-148-1251-0	CLEANER, AIR	1	106148-12510
6- 6	5901-147-1255-0	NUT, WING	1	101147-12550
6- 7	5904-104-1259-0	PAN, OIL	1	104104-12590
6- 8	5931-370-6000-0	WASHER/6	1	22137-060000
6- 9	5932-217-0600-0	WASHER, SPRING/6	1	22217-060000
6-10	5960-130-8020-9	BOLT/M8x20	2	26013-080209
6-11	5904-100-1320-0	GASKET, SILENCER	1	104100-13200
6-12	5906-148-1350-0	SILENCER	1	106148-13500
6-13	5906-148-1352-0	COVER, BODY	1	106148-13520
6-14	5906-148-1356-0	COVER, ELBOU	1	106148-13560
6-15	5906-148-1357-0	PIPE, EXHAUST	1	106148-13570
6-16	5906-148-1359-0	COVER	1	106148-13590
6-17	5906-130-1370-0	COVER, SILENCER	1	106130-13700E
6-18	5906-530-1371-0	CLAMP, COVER	2	106530-13710
6-19	5960-130-8010-2	BOLT/M8x10	2	26013-080102
6-20	5960-130-8020-9	BOLT/M8x20	2	26013-080209
6-21	5960-140-8012-9	BOLT/M8x12	4	26014-080129
6-22	5960-220-5010-2	SCREW/M5x10	4	26022-050102

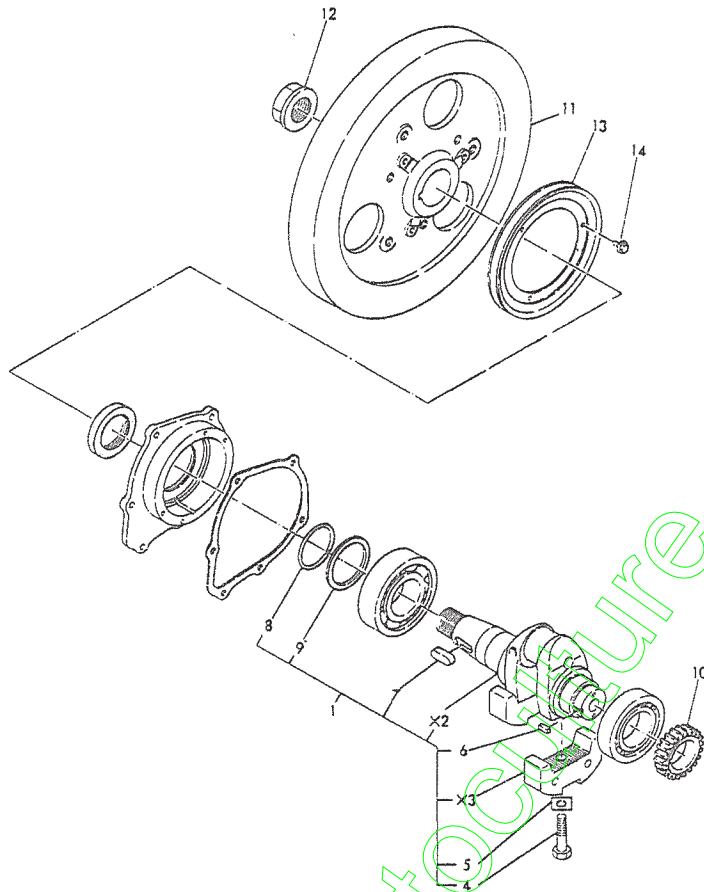
www.emc-motoculture.com

Fig. 7 CAM SHAFT



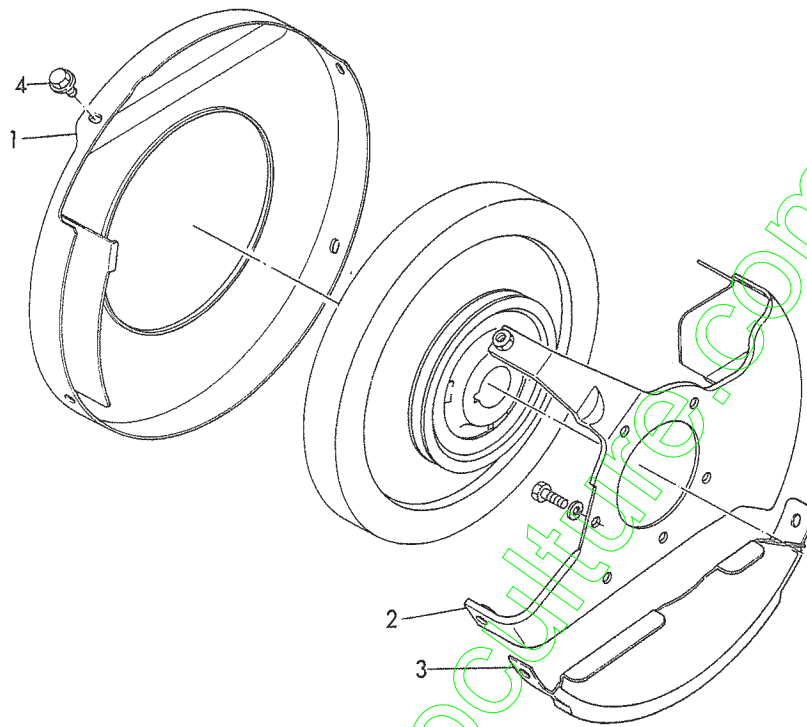
Ref.No.	Parts No.	Description	Qty	Remarks
7- 1	5904-100-1401-0	SHAFT, CAM	1	104100-14010
7- 2	5904-200-1409-0	CAM	1	104200-14090
7- 3	5906-100-1410-0	GEAR, CAM	1	106100-14100
7- 4	5903-338-1419-0	KEY	1	103338-14190
7- 5	5904-200-1420-0	TAPET	2	104200-14200
7- 6	5904-100-1440-0	ROD, PUSH	2	104100-14400
7- 7	5951-010-6004-4	BEARING/6004	1	24101-060044
7- 8	5965-870-8012-2	◇ SCREW/M8×12	1	26587-080122

Fig. 8 CRANK SHAFT



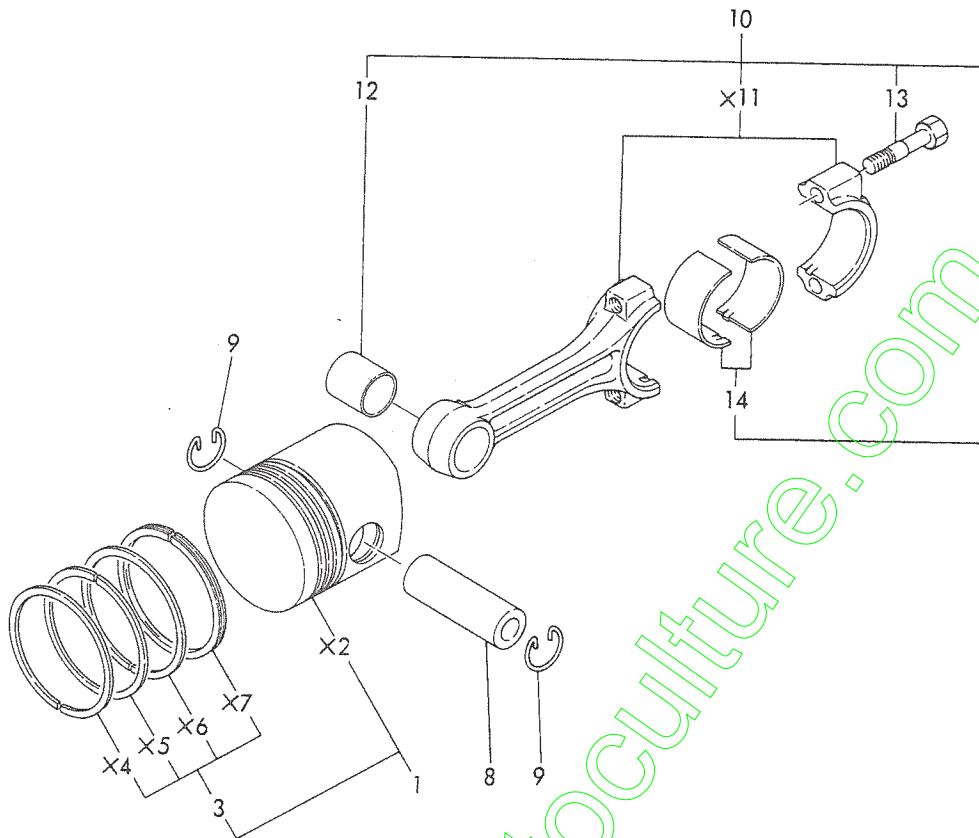
Ref.No.	Parts No.	Description	Qty	Remarks
8- 1	5986-130-2170-1	SHAFT ASSY, CRANK	1	706130-21701
8- 2		SHAFT, CRANK	1	△
8- 3		WEIGHT, BALANCE	2	△
8- 4	5906-100-2113-0	BOLT	2	106100-21130
8- 5	5903-338-2114-0	WASHER	2	103338-21140
8- 6	5905-311-2129-0	KEY 5X10	1	105311-21290
8- 7	5935-121-0026-0	KEY 10X26	1	22512-100260
8- 8	5906-100-0234-0	RING, SNAP	1	106100-02340
8- 9	5906-100-0297-0	RING	1	106100-02970
8-10	5906-100-2120-1	GEAR, CRANK	1	106100-21201
8-11	5906-100-2140-0	FLYWHEEL	1	106100-21400
8-12	5904-200-2153-0	NUT, END	1	104200-21530
8-13	5904-407-2160-0	V-PULLEY	1	104407-21600
8-14	5961-060-6012-2	BOLT/M6X12	3	26106-060122

Fig. 9 FLYWHEEL COVER



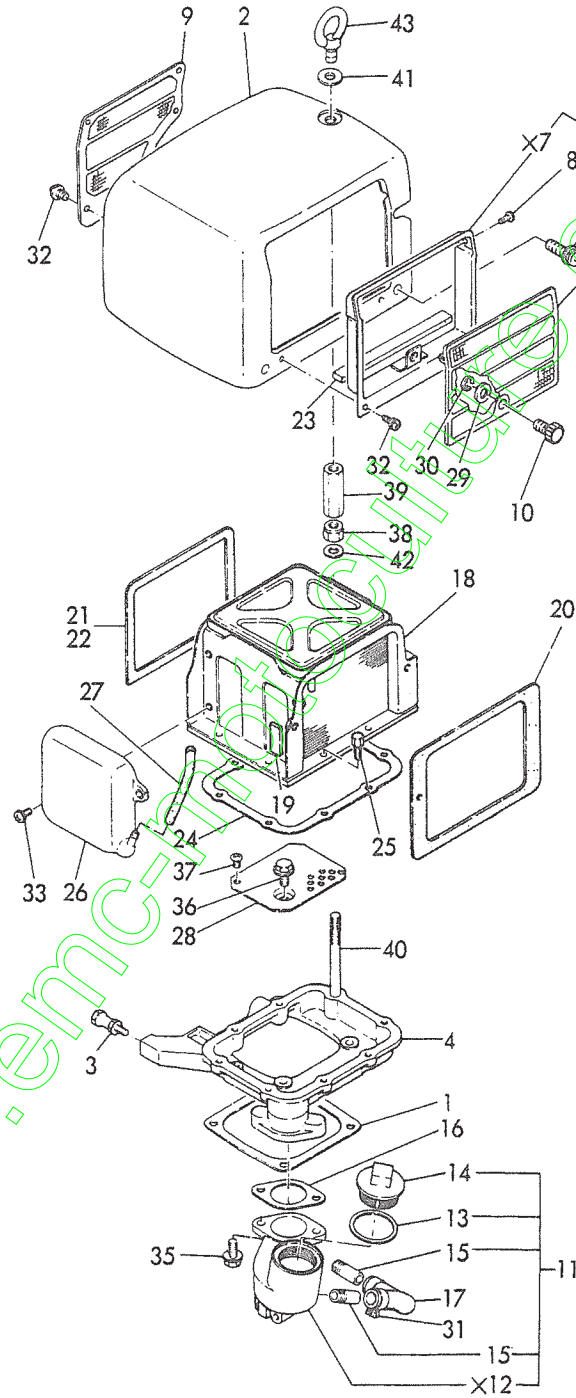
Ref.No.	Parts No.	Description	Qty	Remarks
9- 1	5906-130-2130-0	COVER, FLYWHEEL	1	106130-21300
9- 2	5906-130-2131-0	STAY	1	106130-21310
9- 3	5906-130-2186-0	COVER, FLYWHEEL	1	106130-21860
9- 4	5961-060-8012-2	BOLT M8X12	4	26106-080122

Fig. 10 PISTON & CONNECTING ROD



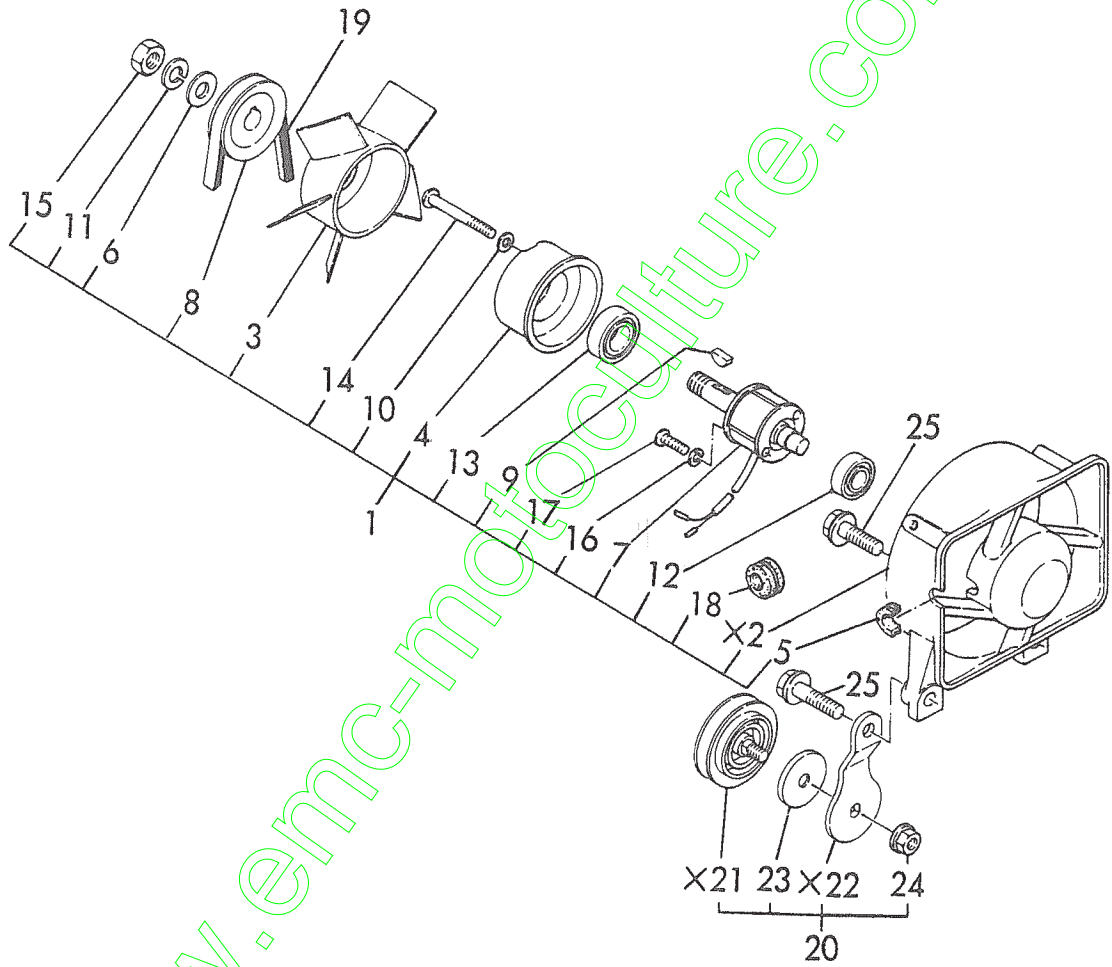
Ref.No.	Parts No.	Description	Qty	Remarks
10- 1	5904-100-2209-0	PISTON COMP	1	104100-22090
10- 2		PISTON	1	△
10- 3	5984-100-2250-1	RING SET, PISTON	1	704100-22501
10- 4		RING, PISTON/NO.1	1	△
10- 5		RING, PISTON/NO.2	1	△
10- 6		RING, PISTON/NO.3	1	△
10- 7		RING, OIL	1	△
10- 8	5904-100-2230-0	PIN, PISTON	1	104100-22300
10- 9	5901-158-2240-0	RING, SNAP	2	101158-22400
10-10	5984-100-2310-0	ROD ASSY, CONNECTING	1	704100-23100
10-11		ROD, CONNECTING	1	△
10-12	5904-100-2310-0	METAL, PISTONPIN	1	104100-23100
10-13	5904-200-2320-1	BOLT, ROD	2	104200-23201
10-14	5904-100-2334-0	METAL, CRANK PIN	2	104100-23340

Fig. 12 CONDENSER



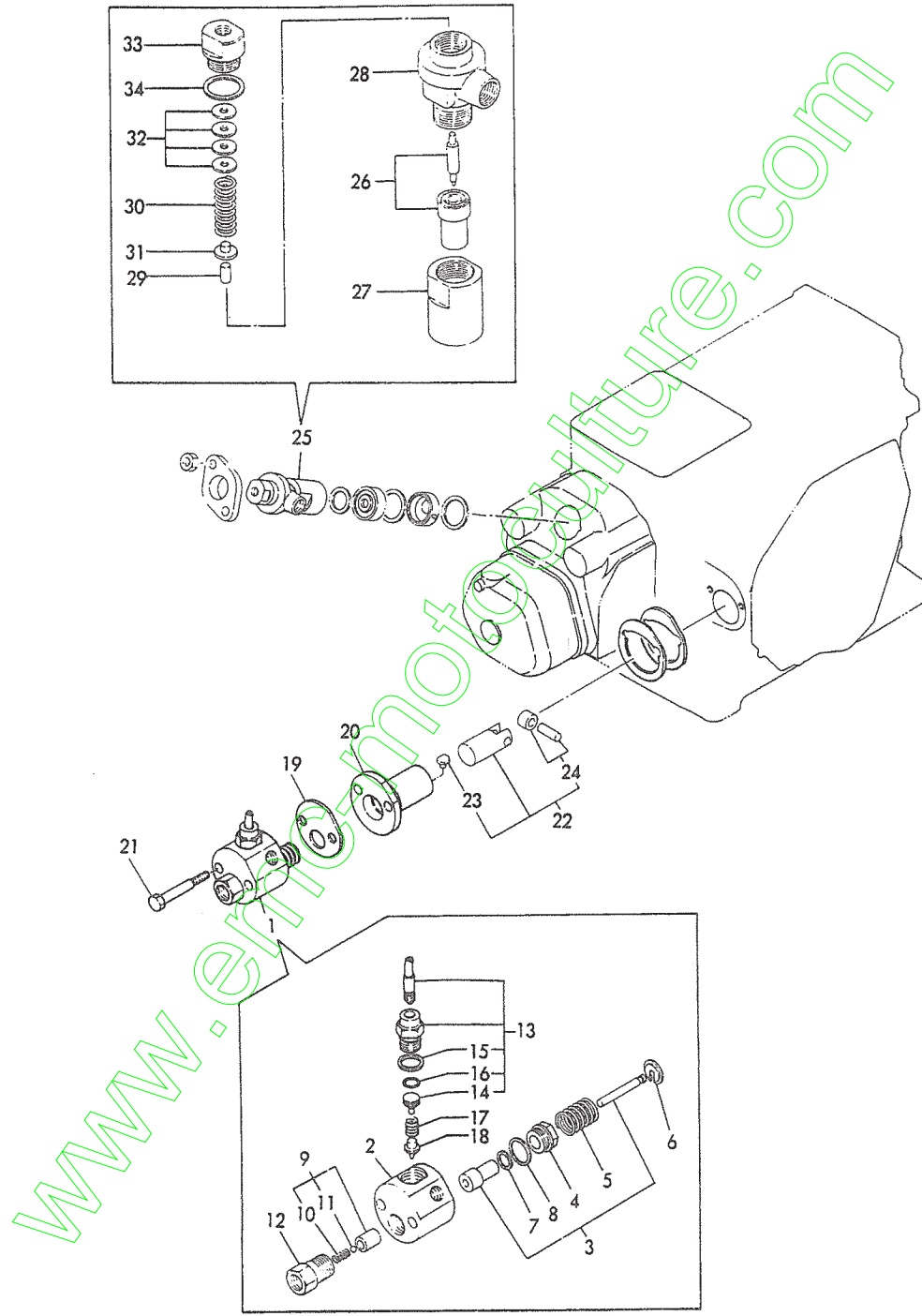
Ref.No.	Parts No.	Description	Qty	Remarks
12- 1	5904-100-4405-0	PACKING	1	104100-44050
12- 2	5904-108-4425-0	COVER, CONDENSER	1	104108-44250E
12- 3	5904-407-4427-0	BOLT-B	2	104407-44270
12- 4	5904-107-4430-0	BASE, SET	1	104107-44300
12- 5	5904-107-4432-0	SCREEN COMP	1	104107-44320
12- 6		SCREEN	1	△
12- 7		DUCT	1	△
12- 8	5906-400-4437-0	RIVET	2	106400-44370
12- 9	5906-100-4433-0	SCREEN	1	106100-44330
12-10	5904-407-4438-0	GRIP	1	104407-44380
12-11	5986-150-4454-0	INTAKE ASSY	1	706150-44540
12-12		INTAKE	1	△
12-13	5902-377-4440-0	PACKING	1	102377-44400
12-14	5906-583-4496-0	CAP	1	106583-44960
12-15	5904-107-4448-0	PIPE, JOINT	2	104107-44480
12-16	5904-407-4442-0	PACKING	1	104407-44420
12-17	5904-150-4449-0	PIPE, RUBBER	1	106150-44490
12-18	5904-107-4450-0	CONDENSER	1	104107-44500
12-19	5906-400-4453-0	SPONGE	1	106400-44530
12-20	5904-207-4454-0	SPONGE	1	104207-44540
12-21	5906-900-4455-0	SPONGE	1	106900-44550
12-22	5906-100-4456-0	SPONGE	1	106100-44560
12-23	5906-200-4458-0	SPONGE	2	106200-44580
12-24	5904-207-4461-0	PACKING	1	104207-44610
12-25	5904-407-4462-0	BOLT	7	104407-44620
12-26	5904-407-4463-3	TANK, CONDENS	1	104407-44633
12-27	5904-407-4464-0	PIPE, RUBBER	1	104407-44640
12-28	5904-107-4465-0	PLATE, FILTER	1	104107-44650
12-29	5931-170-6000-0	WASHER/6	1	22117-060000
12-30	5932-720-0004-0	RING, SNAP/E4	1	22272-000040
12-31	5940-100-1700-0	CLAMP, PIPE/17	2	23010-017000
12-32	5960-210-4012-2	SCREW/M4x12	6	26021-040122
12-33	5960-210-6012-2	SCREW/M6x12	3	26021-060122
12-34	5960-330-6020-2	SCREW/M6x20	4	26033-060202
12-35	5961-060-8018-2	BOLT/M8x18	2	26106-080182
12-36	5961-060-8025-2	BOLT/M8x25	4	26106-080252
12-37	5965-570-6008-2	SCREW/M6x8	1	26557-060082
12-38	5904-107-0790-0	NUT, LOCK	1	104107-07900
12-39	5904-107-0791-0	NUT	1	104107-07910
12-40	5904-407-0794-0	BOLT, HOOK	1	104407-07940
12-41	5935-371-0000-0	WASHER/10	1	22137-100000
12-42	5931-371-0000-0	WASHER/10	1	22137-100000
12-43	5966-171-0000-2	BOLT-EYE/M10	1	26617-100002

Fig. 13 FAN DRIVE



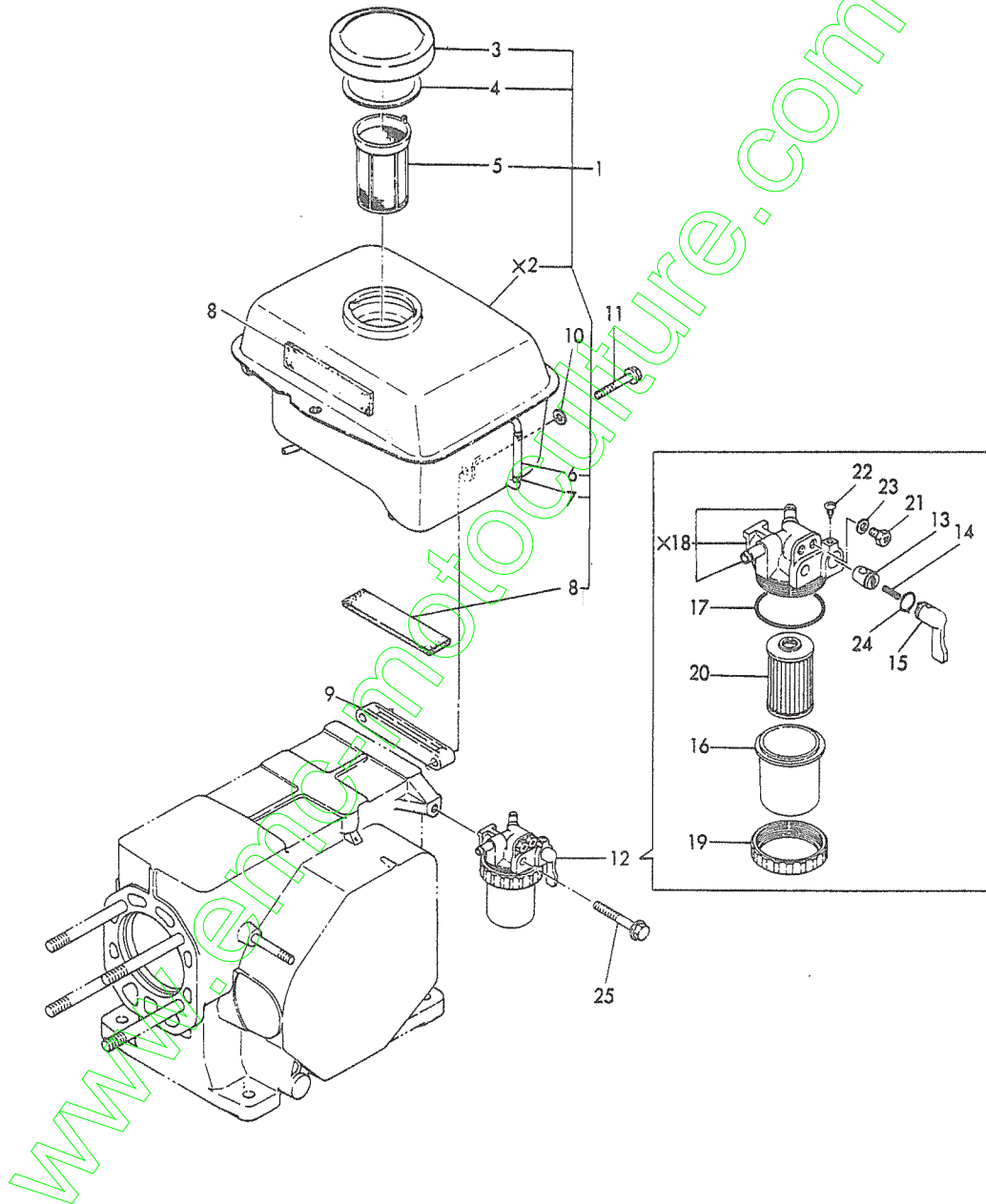
Ref.No.	Parts No.	Description	Qty	Remarks
13- 1	5984-108-4456-0	CASE ASSY, FAN	1	704108-44560
13- 2		CASE, FAN	1	△
13- 3	5904-207-4470-0	FAN, COOLER	1	104207-44700
13- 4	5904-407-4474-0	CASE, BEARING	1	104407-44740
13- 5	5901-374-4475-5	GROMMET, RUBBER	1	101374-44755
13- 6	5904-407-4476-0	WASHER	1	104407-44760
13- 7	5904-408-7801-0	GENERATOR	1	104408-78010
13- 8	5904-407-4477-1	PULLEY, FAN	1	104407-44771
13- 9	5904-407-4479-0	KEY	1	104407-44790
13-10	5932-170-6000-0	WASHER, SPRING/6	2	22217-060000
13-11	5932-171-2000-0	WASHER, SPRING/12	1	22217-120000
13-12	5951-070-6200-3	BEARING/6200ZZ	1	24107-062003
13-13	5951-070-6201-3	BEARING/6201ZZ	1	24107-062013
13-14	5965-570-6055-2	SCREW/M6×55	2	26557-060552
13-15	5967-771-2000-2	NUT/M12	1	26777-120002
13-16	5932-170-4000-0	WASHER, SPRING/4	2	22217-040000
13-17	5965-570-4038-2	SCREW/M4×38	2	26557-040382
13-18	5901-374-7830-5	BUSHING	1	101374-78305
13-19	5904-107-4478-0	BELT, FAN	1	104107-44780
13-20	5906-100-4480-0	PULLEY COMP, TENSION	1	106100-44800
13-21		PULLEY, TENSION	1	△
13-22		LEVER	1	△
13-23	5906-100-4496-0	PLATE, PROTECTOR	1	106100-44960
13-24	5963-660-8000-2	NUT/M8	1	26366-080002
13-25	5961-061-0032-2	BOLT/M10×32	2	26106-100322

Fig. 14 FUEL INJECTION PUMP & VALVE



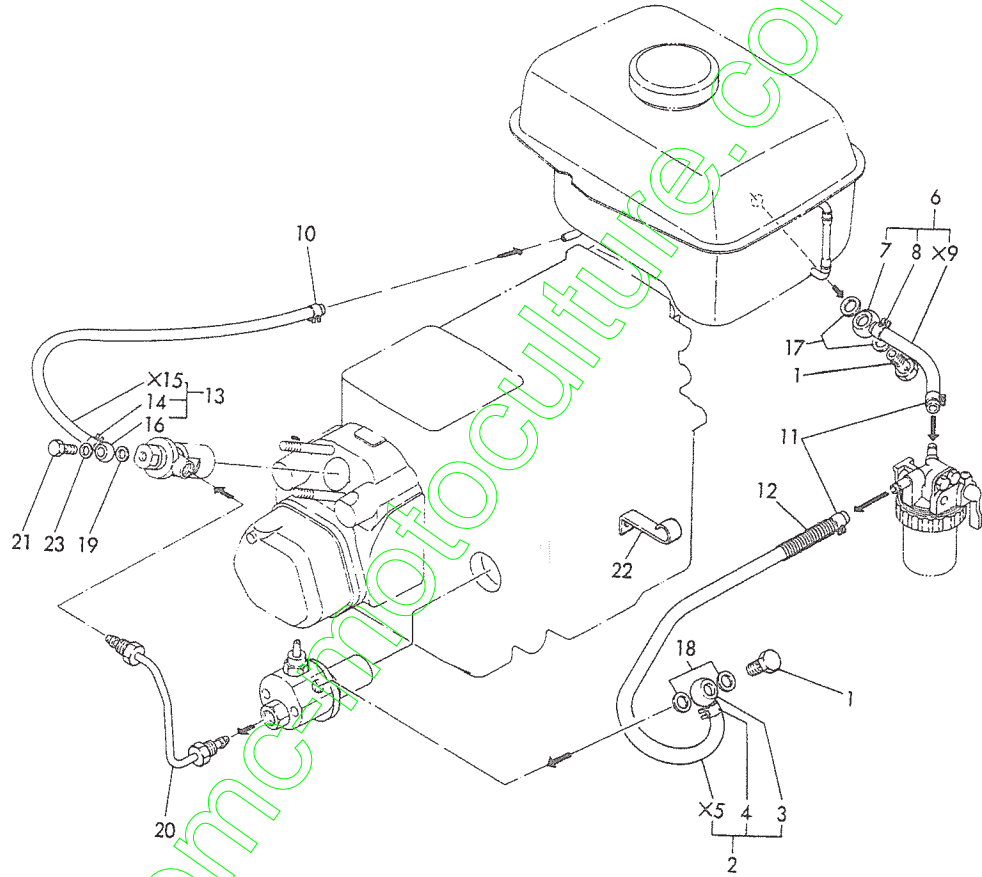
Ref.No.	Parts No.	Description	Qty	Remarks
14- 1	5984-500-5170-0	PUMP ASSY, FUEL INJECTION	1	704500-51700
14- 2	5901-158-5101-0	BODY, PUMP	1	101158-51010
14- 3	5901-104-5110-1	PLANGER COMP	1	101104-51101
14- 4	5972-100-5115-0	SCREW	1	172100-51150
14- 5	5901-400-5116-0	SPRING	1	101400-51160
14- 6	5972-100-5117-1	WASHER	1	172100-51171
14- 7	5972-100-5119-0	PACKING	1	172100-51190
14- 8	5972-100-5129-0	GASKET	1	172100-51290
14- 9	5901-300-5130-0	DELIVERY VALVE COMP	1	101300-51300
14-10	5901-300-5133-0	SPRING	1	101300-51330
14-11	5901-300-5139-0	VALVE, DELIVERY	1	101300-51390
14-12	5972-100-5134-0	CAP	1	172100-51340
14-13	5984-200-5155-0	BODY ASSY, REGULATOR	1	704200-51550
14-14	5971-590-5142-0	NEEDLE, REGULATOR	1	171590-51420
14-15	5974-100-5144-0	PACKING	1	174100-51440
14-16	5904-200-5146-0	O-RING	1	104200-51460
14-17	5971-590-5143-0	SPRING	1	171590-51430
14-18	5904-200-5145-0	PIECE, REGULATOR	1	104200-51450
14-19	5974-100-5103-0	PACKING	1	174100-51030
14-20	5904-200-5401-0	BASE, PUMP SET	1	104200-54010
14-21	5904-200-5408-0	BOLT	2	104200-54080
14-22	5984-200-5450-0	GUIDE ASSY, ROLLER	1	704200-54500
14-23	5974-100-5418-0	STOPPER	1	174100-54180
14-24	5974-100-5419-0	ROLLER COMP, TAPPET	1	174100-54190
14-25	5984-500-5310-0	VALVE ASSY, INJECTION	1	704500-53100
14-26	5972-100-5300-0	NOZZLE COMP	1	172100-53000
14-27	5901-147-5308-0	NUT	1	101147-53080
14-28	5903-854-5310-0	BODY, INJECTION	1	103854-53100
14-29	5813-200-5311-0	SPINDLE	1	113200-53110
14-30	5903-854-5312-0	SPRING, NOZZLE	1	103854-53120
14-31	5813-200-5312-0	RETAINER	1	113200-53120
14-32	5810-250-5315-0	SHIM COMP, ADJUST	1	110250-53150
14-33	5903-854-5318-0	RING	1	103854-53180
14-34	5972-100-5320-0	PACKING	1	172100-53200

Fig. 15 FUEL TANK & FUEL STRAINER



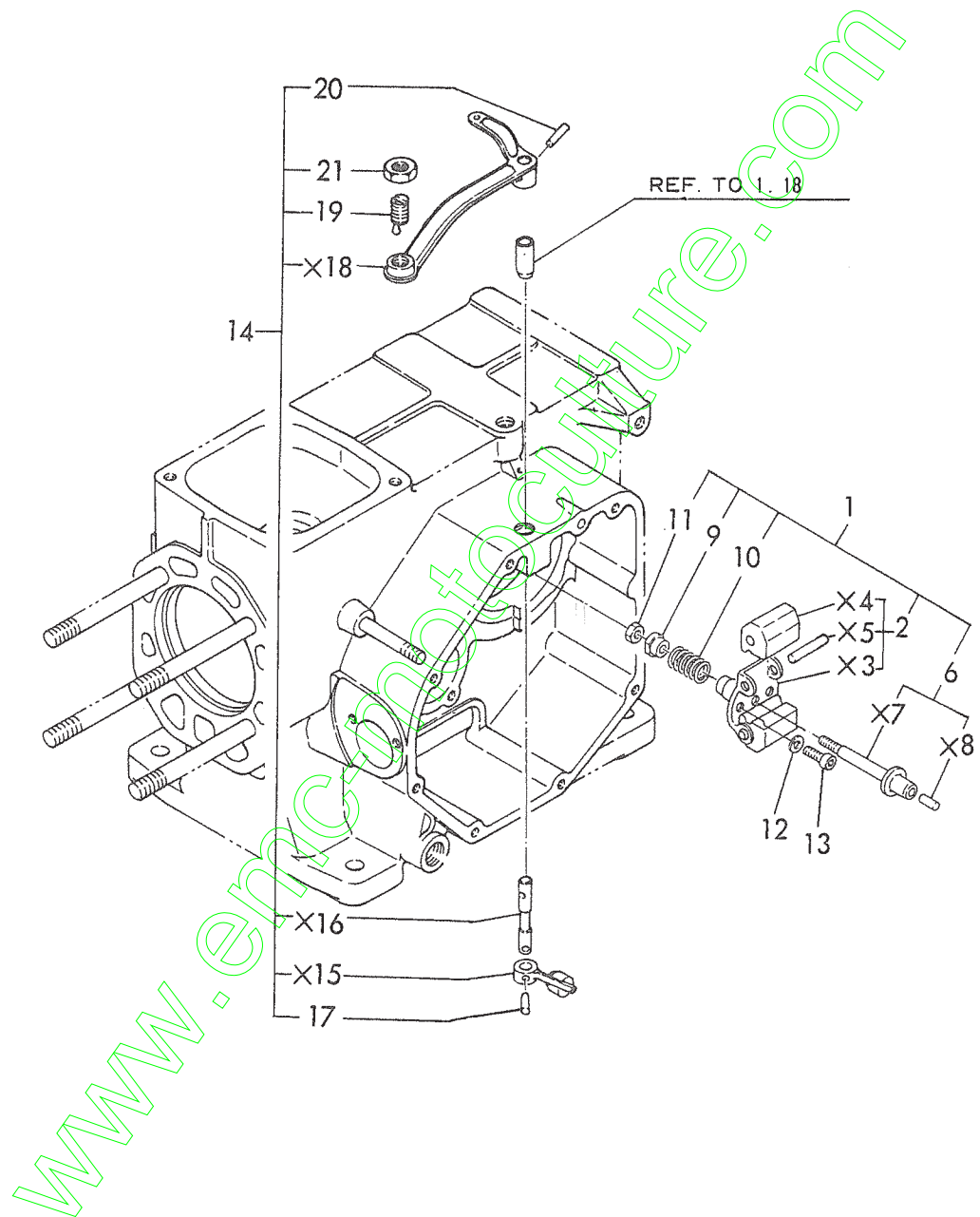
Ref.No.	Parts No.	Description	Qty	Remarks
15- 1	5986-148-5570-0	TANK ASSY, FUEL	1	706148-55700
15- 2		TANK, FUEL	1	△
15- 3	5905-015-5504-0	CAP	1	105015-55040
15- 4	5901-504-5505-1	PACKING	1	101504-55051
15- 5	5901-504-5510-1	STRAINER, FUEL	1	101504-55101
15- 6	5904-200-5516-0	GAUGE, OIL	1	104200-55160
15- 7	5903-854-5522-0	CLAMP	2	103854-55220
15- 8	5903-854-5520-0	FELT	2	103854-55200
15- 9	5904-100-5524-0	BASE, TANK SET	1	104100-55240
15-10	5931-570-8000-0	WASHER/8	2	22157-080000
15-11	5961-060-8040-2	BOLT/M8×40	2	26106-080402
15-12	5984-300-5550-0	FILTER ASSY	1	704300-55500
15-13	5904-200-5532-1	VALVE, TAPER	1	104200-55321
15-14	5904-200-5533-0	SPRING	1	104200-55330
15-15	5904-200-5534-1	HANDLE, COCK	1	104200-55341
15-16	5902-103-5551-0	COVER	1	102103-55510
15-17	5902-103-5552-0	O-RING	1	102103-55520
15-18		BODY COMP	1	△
15-19	5810-250-5561-0	RING, RETAINER	1	110250-55610
15-20	5904-200-5571-0	ELEMENT	1	104200-55710
15-21	5901-720-5575-0	PLUG/6	2	101720-55750
15-22	5904-200-5575-0	SCREW/4	1	104200-55750
15-23	5944-180-6000-0	PACKING/6	2	23418-060000
15-24	5953-112-4010-0	O-RING/1A P100	1	24311-240100
15-25	5961-060-8060-2	BOLT/M8×60	1	26106-080602

Fig. 16 FUEL OIL LINES



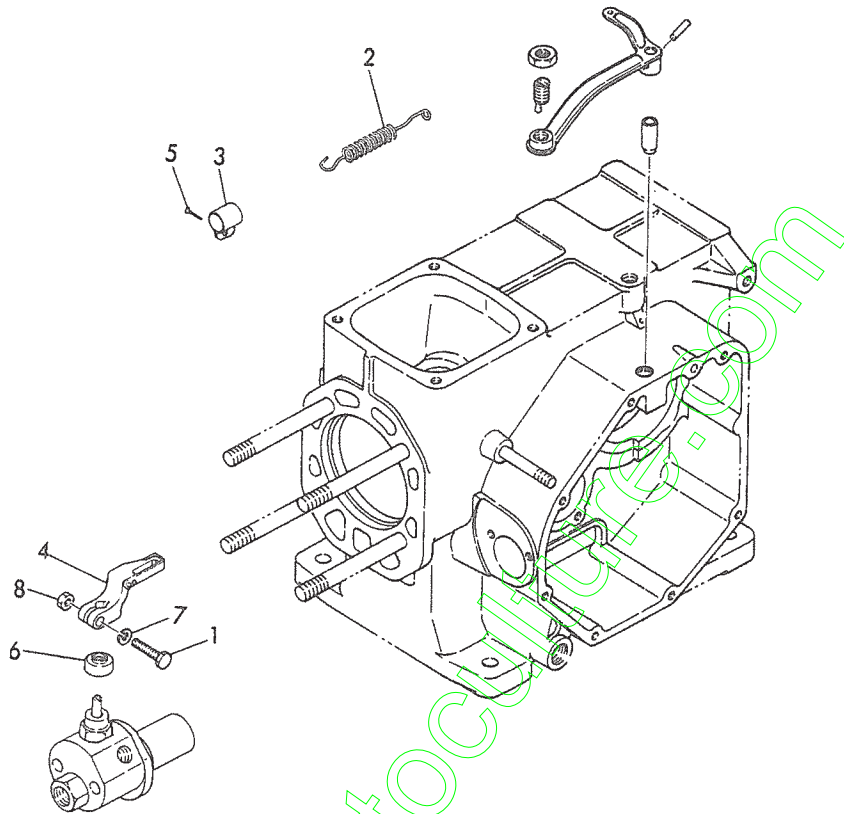
Ref.No.	Parts No.	Description	Qty	Remarks
16- 1	5903-854-3914-0	BOLT, CONNECTOR/12	2	103854-39140
16- 2	5906-100-5901-1	PIPE COMP, FUEL	1	106100-59011
16- 3	5901-304-5902-0	CONNECTOR/12	1	101304-59020
16- 4	5924-766-5905-0	CLAMP, HOSE/12	1	124766-59050
16- 5		PIPE, FUEL	1	△
16- 6	5906-100-5903-0	PIPE COMP, FUEL	1	106100-59030
16- 7	5901-304-5902-0	CONNECTOR/12	1	101304-59020
16- 8	5924-766-5905-0	CLAMP, HOSE/12	1	124766-59050
16- 9		PIPE	1	△
16-10	5924-722-5905-0	CLAMP/9	1	124722-59050
16-11	5924-766-5905-0	CLAMP/12	2	124766-59050
16-12	5906-100-5906-0	SPRING	1	106100-59060
16-13	5906-100-5914-1	PIPE COMP, RETURN	1	106100-59141
16-14	5924-722-5905-0	CLAMP/9	1	124722-59050
16-15		PIPE, RETURN	1	△
16-16	5903-854-5911-0	CONNECTOR/8	1	103854-59110
16-17	5904-200-5917-0	PACKING/12	2	104200-59170
16-18	5904-200-5917-0	PACKING/12	2	104200-59170
16-19	5904-884-5917-0	PACKING/8	1	104884-59170
16-20	5904-100-5980-0	PIPE COMP, INJECTION	1	104100-59800
16-21	5901-147-5981-0	BOLT, CONNECTOR/8	1	101147-59810
16-22	5904-100-5992-0	CLAMP, PIPE	1	104100-59920
16-23	5944-140-8001-2	PACKING/8	1	23414-080012

Fig. 17 GOVERNOR



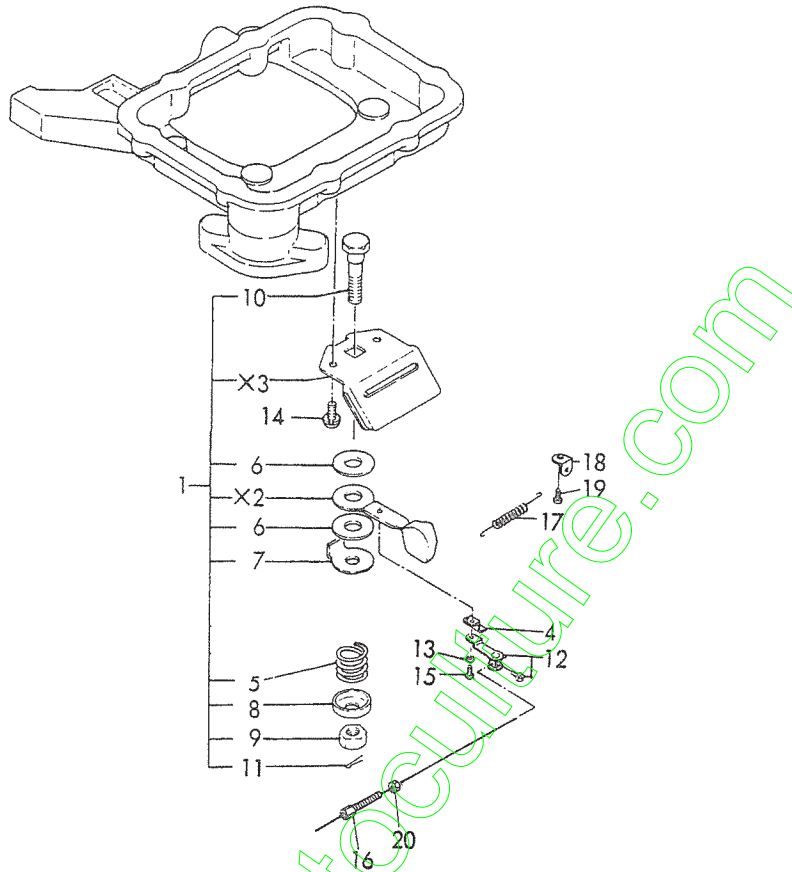
Ref.No.	Parts No.	Description	Qty	Remarks
17- 1	5986-100-6170-0	GOVERNOR ASSY	1	706100-61700
17- 2	5904-211-6129-0	WEIGHT COMP, GOVERNOR	1	104211-61290
17- 3		SUPPORT	1	△
17- 4		WEIGHT, GOVERNOR	2	△
17- 5		PIN	2	△
17- 6	5904-211-6130-0	SPINDLE COMP, GOVERNOR	1	104211-61300
17- 7		SPINDLE, GOVERNOR	1	△
17- 8		PIECE	1	△
17- 9	5904-211-6134-0	RETAINER, SPRING	1	104211-61340
17-10	5904-211-6136-0	SPRING, GOVERNOR	1	104211-61360
17-11	5967-560-6000-2	NUT/M6	1	26756-060002
17-12	5932-170-6000-0	WASHER, SPRING/6	2	22217-060000
17-13	5964-500-6018-2	BOLT/M6×18	2	26450-060182
17-14	5986-100-6150-0	LEVER ASSY, GOVERNOR	1	706100-61500
17-15		LEVER NO.1 COMP	1	△
17-16		SHAFT	1	△
17-17	5933-220-3015-0	PIN/3×15	1	22322-030150
17-18		LEVER NO.2	1	△
17-19	5904-100-6636-0	SCREW	1	104100-66360
17-20	5933-220-3022-0	PIN/3×22	1	22322-030220
17-21	5966-961-0000-2	NUT/M10	1	26696-100002

Fig. 18 CONTROL DEVICE



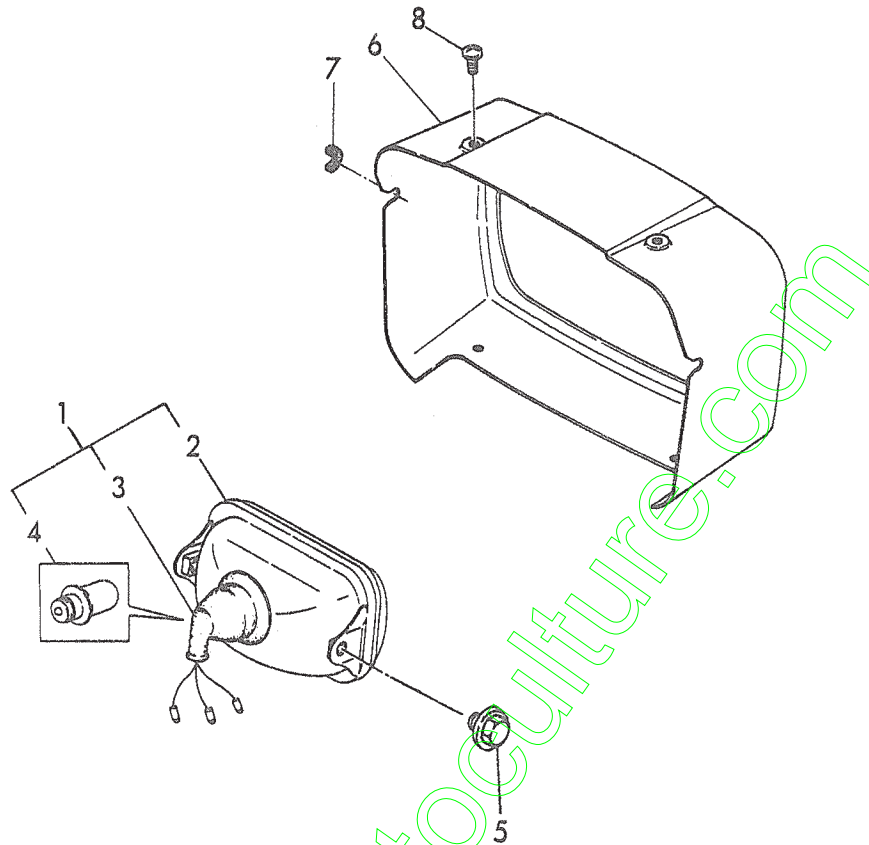
Ref.No.	Parts No.	Description	Qty	Remarks
18- 1	5974-200-3459-1	BOLT	1	174200-34591
18- 2	5906-130-6608-0	SPRING COMP, REGULATOR	1	106130-66080
18- 3	5903-338-6620-0	BAND, LOCK	1	103338-66200
18- 4	5904-200-6623-0	LEVER COMP, ADJUST	1	104200-66230
18- 5	5903-854-6624-0	RIVET	1	103854-66240
18- 6	5901-104-6630-0	COVER, DUST	1	101104-66300
18- 7	5932-170-6000-0	WASHER, SPRING/6	1	22217-060000
18- 8	5967-560-6000-2	NUT/M6	1	26756-060002

Fig. 19 REGULATOR HANDLE



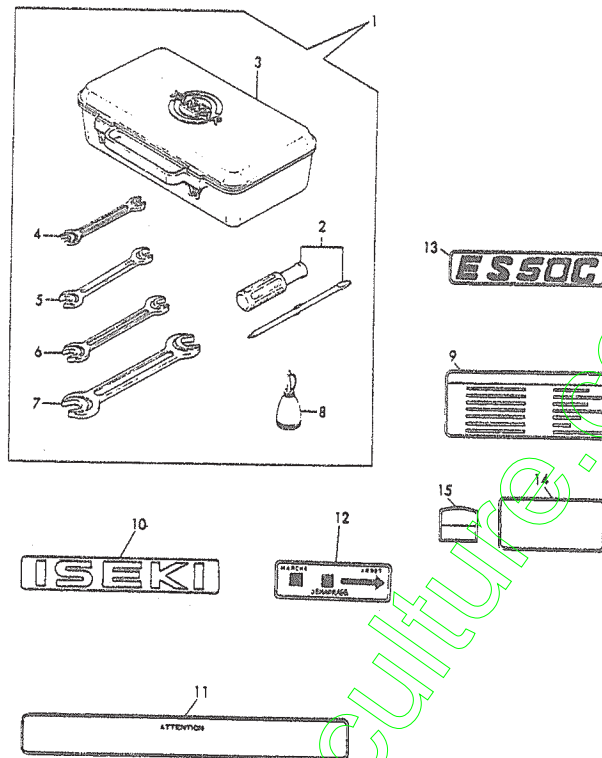
Ref.No.	Parts No.	Description	Qty	Remarks
19- 1	5984-104-6650-0	HANDLE ASSY, REGULATOR	1	704104-66500
19- 2		HANDLE, REGULATOR	1	△
19- 3		GUIDE, HANDLE	1	△
19- 4	5904-300-6659-0	MOUNT	1	104300-66590
19- 5	5904-200-6682-0	SPRING	1	104200-66820
19- 6	5904-200-6683-0	PLATE, FRICTION	2	104200-66830
19- 7	5904-200-6684-0	WASHER-A	1	104200-66840
19- 8	5904-200-6685-0	WASHER-B	1	104200-66850
19- 9	5904-200-6686-0	NUT, LOCK	1	104200-66860
19-10	5904-200-6687-0	BOLT	1	104200-66870
19-11	5934-112-0015-0	PIN, SPLIT/2.0×15	1	22411-200150
19-12	5904-104-6696-0	LEVER COMP, WIRE	1	104104-66960
19-13	5932-170-4000-0	WASHER, SPRING/4	1	22217-040000
19-14	5960-130-6012-9	BOLT/M6×12	2	26013-060129
19-15	5965-570-4008-2	SCREW/M4×8	1	26557-040082
19-16	5902-100-6708-0	BOLT	1	102100-67080
19-17	5904-104-6730-0	SPRING, RETURN	1	104104-67300
19-18	5904-104-6733-0	SUPPORT	1	104104-67330
19-19	5960-130-6012-9	BOLT/M6×12	1	26013-060129
19-20	5967-560-6000-2	NUT/M6	1	26756-060002

Fig. 20 LIGHTING DEVICE



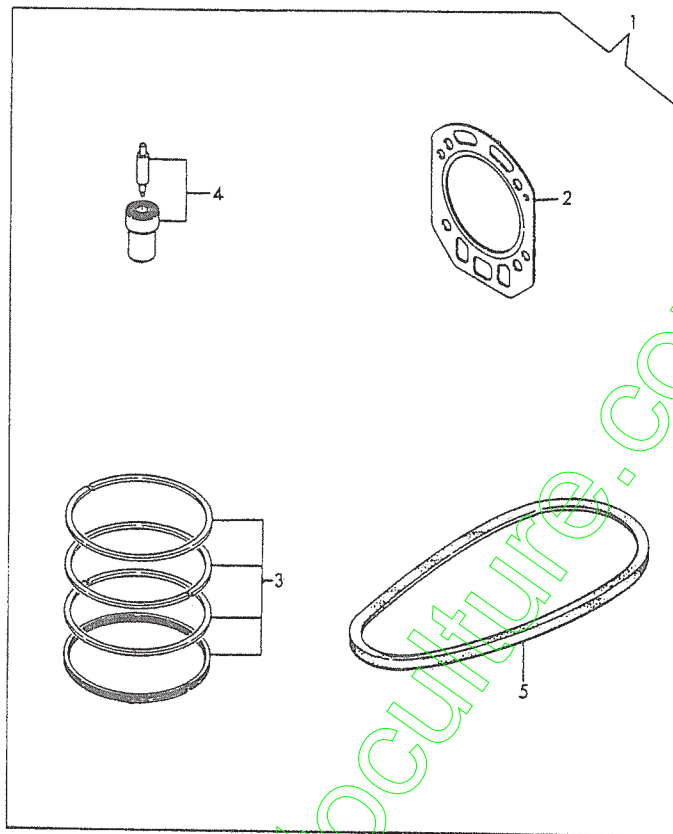
Ref.No.	Parts No.	Description	Qty	Remarks
20- 1	5906-130-7802-0	HEAD LAMP COMP	1	106130-78020
20- 2	5894-190-5311-0	LAMP UNIT	1	194190-53110
20- 3	5906-130-7804-0	SOCKET, WITH WIRE	1	106130-78040
20- 4	5906-130-7825-0	BALVE /6V 25W	1	106130-78250
20- 5	5961-061-0012-2	BOLT /M10X12	2	26106-100122
20- 6	5904-104-5581-0	COVER, RUBBER	1	104104-55810E
20- 7	5901-204-5582-0	GROMMET, RUBBER	1	101204-55820
20- 8	5960-330-6012-2	SCREW	4	26033-060122

Fig. 21 TOOLS & LABELS



Ref.No.	Parts No.	Description	Qty	Remarks
21- 1	5984-800-9210-0	TOOL ASSY	1	704800-92100
21- 2	5904-200-9235-0	SCREW DRIVER	1	104200-92350
21- 3	5904-200-9260-0	BOX, TOOLS	1	104200-92600
21- 4	5881-101-0013-0	SPANNER / 10×13	1	28110-100130
21- 5	5881-101-2014-0	SPANNER / 12×14	1	28110-120140
21- 6	5881-101-7019-0	SPANNER / 17×19	1	28110-170190
21- 7	5881-102-2024-0	SPANNER / 22×24	1	28110-220240
21- 8	5882-100-0015-0	OILER	1	28210-000150
21- 9	5906-248-0703-0	LABEL	1	106248-07030
21-10	5904-244-0709-0	MARK	2	104244-07090
21-11	5906-248-0712-0	LABEL	1	106248-07120
21-12	5906-248-0734-0	LABEL	1	106248-07340
21-13	5904-108-0736-0	LABEL	1	104108-07360
21-14	5906-248-0744-0	LABEL	1	106248-07440
21-15	5906-248-0755-0	LABEL	1	106248-07550

Fig. 22 REPAIR PARTS KIT

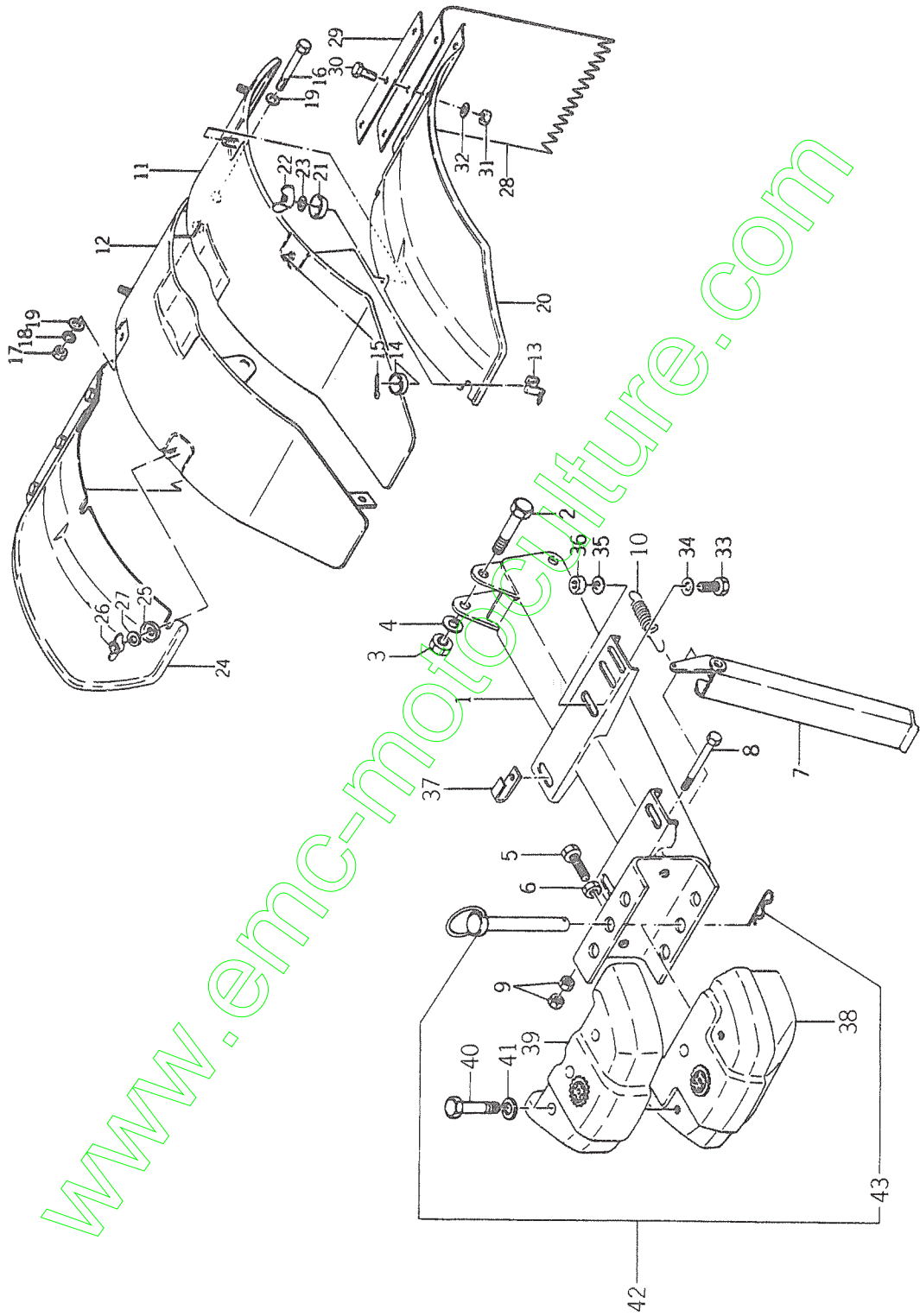


Ref.No.	Parts No.	Description	Qty	Remarks
22- 1	5986-100-9250-0	PARTS KIT, REPAIR	1	706100-92500
22- 2	5904-100-0133-0	GASKET, HEAD	1	104100-01330
22- 3	5984-100-2250-1	RING SET	1	704100-22501
22- 4	5972-100-5300-0	VALVE, NEEDLE	1	172100-53000
22- 5	5951-170-0335-1	V-BELT, M1335	1	25117-003351

CHASSIS

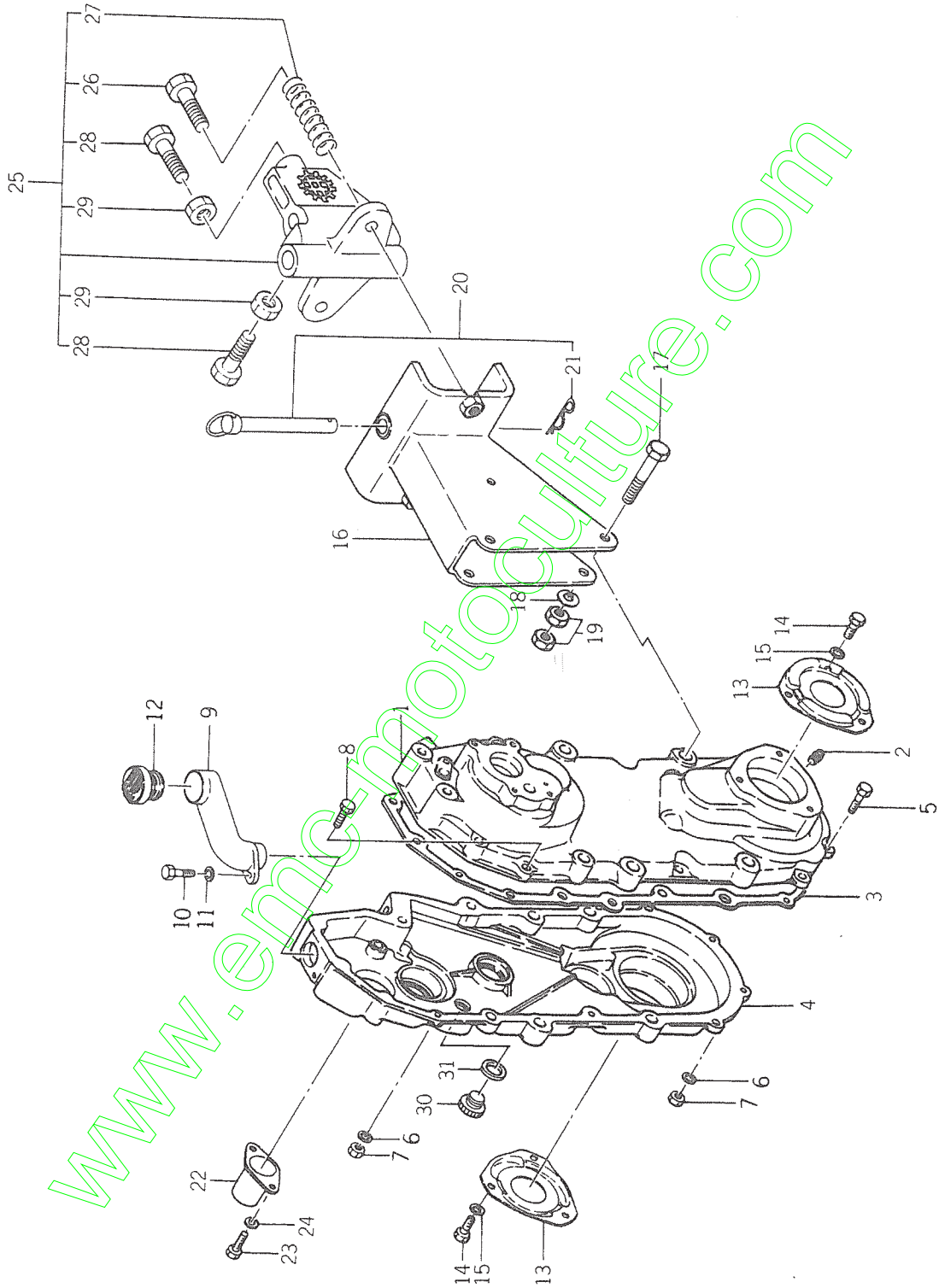
www.emc-motoculture.com

Fig. 1 FRAME and FENDER



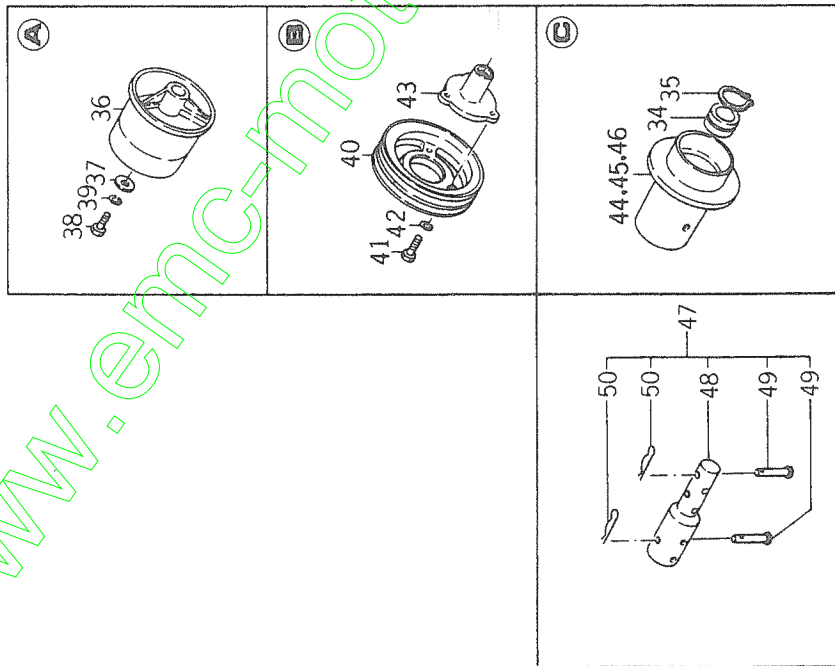
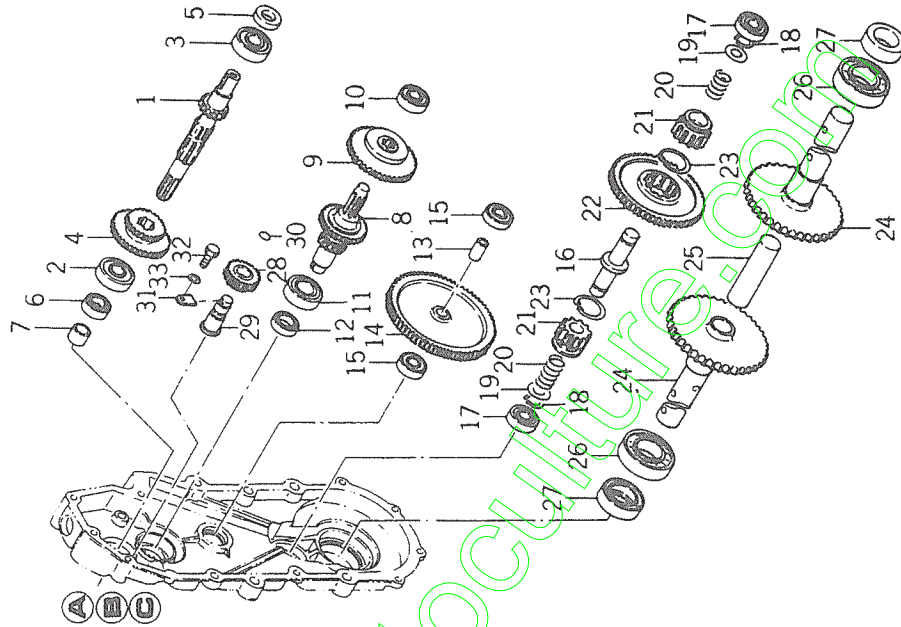
Ref.No.	Parts No.	Description	Qty	Remarks
1- 1	1368-101-1000-0	FRAME, F	1	
1- 2	V201-261-2085-0	BOLT/M12x85	2	
1- 3	V302-260-0120-0	NUT/M12	2	
1- 4	V401-260-0120-0	WASHER, SP/M12	2	
1- 5	W201-261-0035-0	BOLT/M10x35 S=35	2	
1- 6	V300-260-0100-0	NUT/M10	2	
1- 7	1368-106-1000-0	STAND	1	
1- 8	V201-261-0080-0	BOLT/M10x80	1	
1- 9	V302-260-0100-0	NUT/M10	2	
1-10	1352-106-0020-0	SPRING, STAND	1	
1-11	1368-616-1001-0	FENDER, LH	1	
1-12	1368-616-2001-0	FENDER, RH	1	
1-13	1352-616-0010-0	SPRING, PLATE	2	
1-14	1352-616-0020-0	WASHER, CONE	2	
1-15	V500-153-0015-0	PIN, SPLIT/3x15	2	
1-16	V201-260-8080-8	BOLT/M8x80	2	
1-17	V401-260-0080-0	NUT/M8	2	
1-18	V401-260-0080-0	WASHER, SP/M8	2	
1-19	V413-160-0080-0	WASHER/M8	2	
1-20	1365-616-2000-0	FENDER, AUX LH	1	
1-21	1352-616-0020-0	WASHER, CONE	2	
1-22	V370-160-0080-0	NUT, WING/M8	2	
1-23	V401-260-0080-0	WASHER, SP/M8	2	
1-24	1365-616-3000-0	FENDER, AUX RH	1	
1-25	1352-616-0020-0	WASHER, CONE	2	
1-26	V370-160-0080-0	NUT, WING/M8	2	
1-27	V401-260-0080-0	WASHER, SP/M8	2	
1-28	1352-616-0030-0	GUARD, MAD	2	
1-29	1352-616-0040-0	PLATE, SET	2	
1-30	V200-260-6012-0	BOLT/M8x12	6	
1-31	V300-260-0060-0	NUT/M6	6	
1-32	V401-260-0060-0	WASHER, SP/M6	6	
1-33	V201-261-0035-0	BOLT/M10x35	4	
1-34	1365-121-0050-0	WASHER/10x20x2	4	
1-35	V401-160-0100-0	WASHER, SP/M10	4	
1-36	V300-260-0100-0	NUT/M10	4	
1-37	1317-621-0020-0	CLAMP	1	
1-38	1352-931-0010-0	WEIGHT, F A	1	★
1-39	1352-931-0020-0	WEIGHT, F B	1	★
1-40	V201-261-2060-0	BOLT/M12x60	2	★
1-41	V401-160-0120-0	WASHER, SP/M12	2	★
1-42	1390-931-2000-0	PIN, KING ASSY	1	★
1-43	1305-931-0030-0	•PIN, HAIR	1	★

Fig. 2 MAIN GEAR CASE



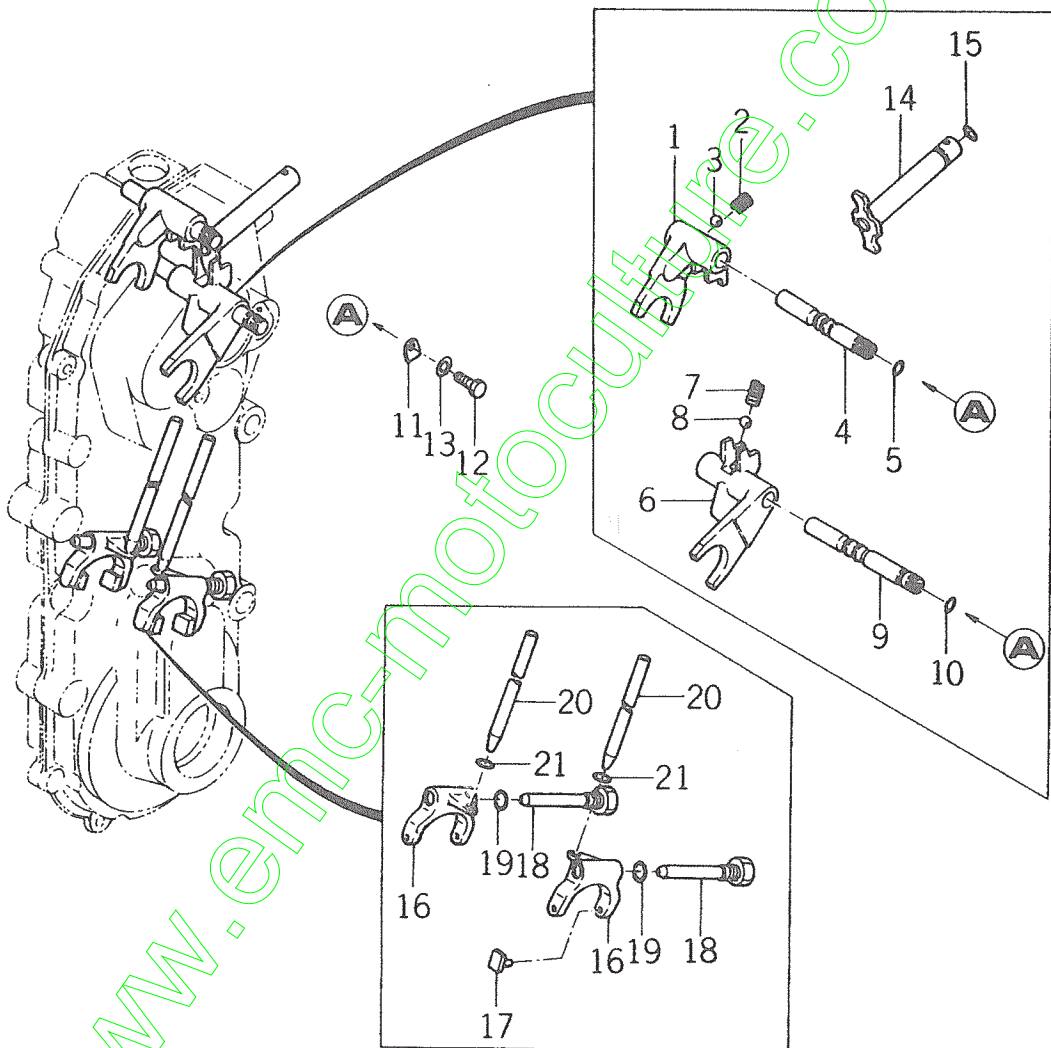
Ref.No.	Parts No.	Description	Qty	Remarks
2- 1	1371-216-0012-0	CASE, MAIN GEAR LH	1	
2- 2	V781-300-0006-0	PLUG	1	
2- 3	1365-216-0050-0	PACKING, MAIN GEAR CASE	1	
2- 4	1365-216-0023-0	CASE, MAIN GEAR RH	1	
2- 5	V201-260-8025-0	BOLT/M8x25	6	
2- 6	V401-260-0080-0	WASHER, SP/M8	7	
2- 7	V300-260-0080-0	NUT/M8	7	
2- 8	V201-260-8035-0	BOLT/M8x35	1	
2- 9	1368-216-0010-0	PIPE, OIL	1	
2-10	V200-260-6016-0	BOLT/M6x16	1	
2-11	V401-260-0060-0	WASHER, SP/M6	1	
2-12	7954-205-1010-0	CAP, OIL/30	1	
2-13	1365-216-0030-0	METAL, WHEEL	2	
2-14	V200-260-6012-0	BOLT/M6x12	6	
2-15	V401-260-0060-0	WASHER, SP/M6	6	
2-16	1390-930-2001-0	HITCH, R	1	
2-17	V201-461-2075-0	BOLT/M12x75 9T	2	
2-18	V401-160-0120-0	WASHER, SP/M12	2	
2-19	V300-260-0120-0	NUT/M12	2	
2-20	1390-931-2000-0	PIN, KING ASSY	1	
2-21	1305-931-0030-0	•PIN, HAIR	1	
2-22	1365-216-0040-0	CAP, SHAFT/30x50	1	
2-23	V200-260-6010-0	BOLT/M6x10	2	
2-24	V401-260-0060-0	WASHER, SP/M6	2	
2-25	8057-006-0000-0	HITCH, CULTI ASSY	1	★
2-26	8057-006-0020-0	•BOLT	2	★
2-27	8057-006-0030-0	•SPRING	2	★
2-28	W201-261-2040-0	•BOLT/M12x40 S=40	2	★
2-29	V302-260-0120-0	•NUT/M12	2	★
2-30	1343-216-0020-0	PLUG	1	
2-31	1343-216-0030-0	PACKING	1	

Fig. 3 TRANSMISSION GEAR



Ref.No.	Parts No.	Description	Qty	Remarks
3- 1	1390-217-0010-0	SHAFT, MAIN	1	
3- 2	V600-110-6304-0	BEARING, RB/6304	1	
3- 3	V600-116-2045-0	BEARING, RB/6204 1/2	1	
3- 4	1352-217-0020-0	GEAR, MAIN CHANGE/25-39T	1	
3- 5	1340-217-0040-0	SEAL,OIL/TC22357	1	
3- 6	1352-217-0030-0	SEAL, OIL/TC25358	1	
3- 7	1352-217-0040-0	BUSH, SEAL/SI202513	1	
3- 8	1352-219-1000-0	SHAFT, CHANGE	1	
3- 9	1390-219-0010-0	GEAR, CHANGE/45T	1	
3-10	V600-110-6203-0	BEARING, RB/6203	1	
3-11	V600-116-2045-0	BEARING, RB/6204 1/2	1	
3-12	1340-217-0040-0	SEAL, OIL/TC22357	1	
3-13	1352-222-0010-0	PIN, COUNTER GEAR	1	
3-14	1352-222-0020-0	GEAR, IDLE/72T	1	
3-15	V600-110-6202-0	BEARING, RB/6202	2	
3-16	1365-224-0010-0	SHAFT, WHEEL PINION	1	
3-17	V600-110-6304-0	BEARING, RB/6304	2	
3-18	V704-140-0200-0	RING, SNAP/C 20	2	
3-19	1365-224-0020-0	WASHER	4	
3-20	1352-224-0020-0	SPRING, PRESS/35	2	
3-21	1365-224-0030-0	PINION, WHEEL/11T	2	
3-22	1352-224-0040-0	GEAR, SIDE CLUTCH/62T	1	
3-23	V705-140-0350-0	RING, SNAP/C 35	2	
3-24	1365-225-1000-0	SHAFT, WHEEL	2	
3-25	1310-225-0050-0	PIN, WHEEL SHAFT	1	
3-26	V600-110-6208-0	BEARING, RB/6208	2	
3-27	1365-225-0010-0	SEAL, OIL/AQ6952E	2	
3-28	1390-226-2000-0	GEAR, BACK/15-20T	1	
3-29	1390-226-0010-0	PIN, BACK GEAR	1	
3-30	V720-102-4010-0	O-RING/P10A	1	
3-31	1390-226-0020-0	PLATE, LOCK	1	
3-32	V200-260-6012-0	BOLT/M6X12	1	
3-33	V401-160-0060-0	WASHER, SP/M6	1	
3-34	1371-217-0010-0	COLLAR	1	
3-35	1371-217-0020-0	CLIP/WR47	1	
3-36	1352-917-0010-0	PULLEY/100	1	
3-37	1324-205-0020-0	WASHER	1	
3-38	V201-260-8020-0	BOLT/M8X20	1	
3-39	V401-260-0080-0	WASHER, SP/M8	1	
3-40	1352-917-0030-0	PULLEY, V/2-140	1	★
3-41	V201-260-8020-0	BOLT/M8X20	3	★ for MAIN SHAFT
3-42	V401-260-0080-0	WASHER, SP/M8	3	★
3-43	1352-917-0040-0	BOSS/PULLEY	1	★
3-44	1366-917-0010-0	PULLEY/75	1	★
3-45	1366-917-0020-0	PULLEY/90	1	★ for ENGINE
3-46	1366-917-0030-0	PULLEY/100	1	★
3-47	1365-227-2000-0	SHAFT, SUB WHEEL SET	1	★
3-48	1365-225-0020-0	SHAFT, SUB WHEEL	2	★
3-49	1365-241-0020-0	PIN, WHEEL BOSS	4	★
3-50	1305-241-0010-0	PIN, HAIR	4	★

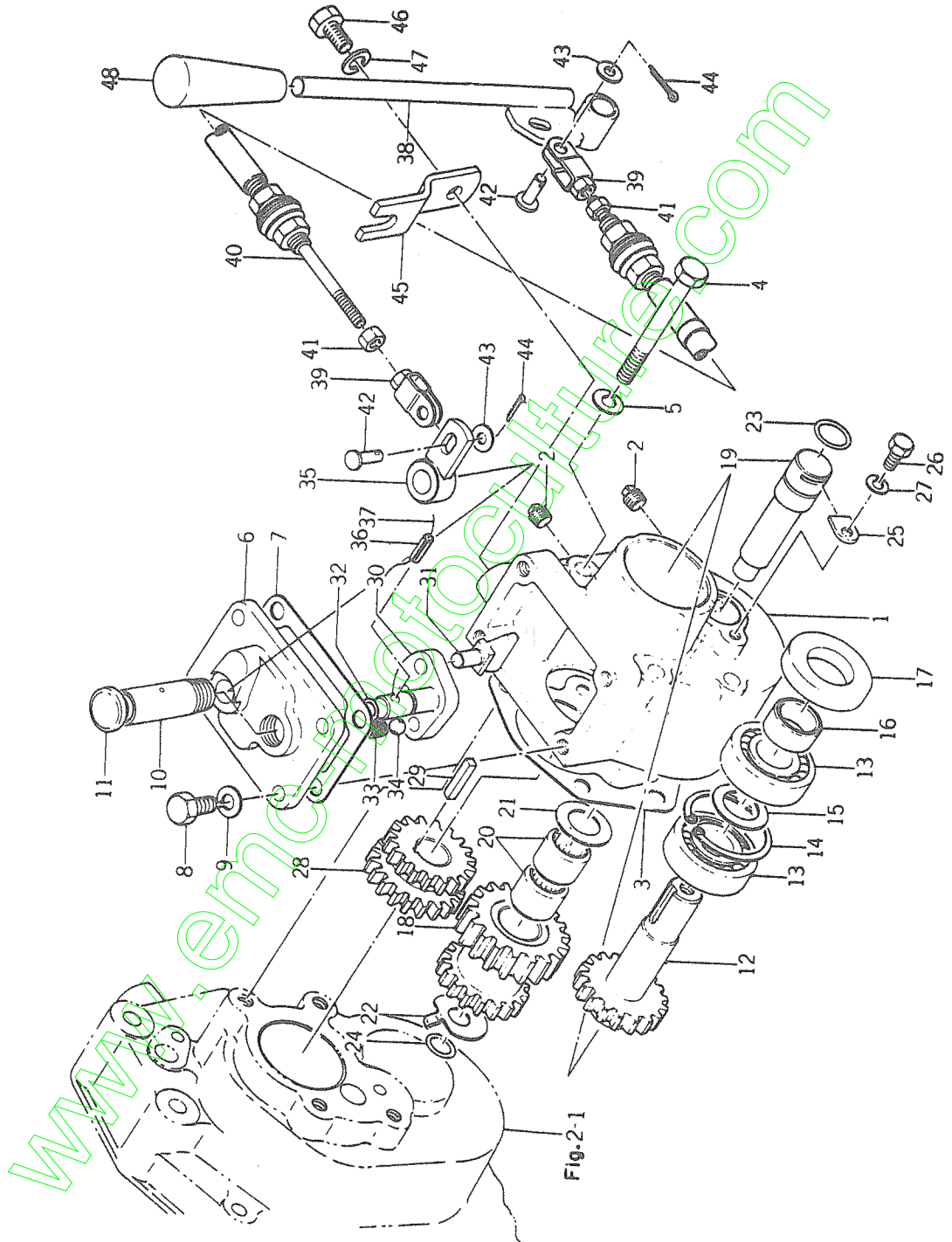
Fig. 4 SHIFTER



Ref.No.	Parts No.	Description	Qty	Remarks
4- 1	1352-229-0010-0	SHIFTER, MAIN CHANGE	1	
4- 2	1302-225-0030-0	SPRING, SHIFTER	1	
4- 3	V680-100-0010-0	BALL, STEEL	1	
4- 4	1352-229-0020-0	STAY, MAIN SHIFTER	1	
4- 5	V720-101-9009-0	O-RING/P9	1	
4- 6	1352-229-0031-0	SHIFTER, BACK CHANGE	1	
4- 7	1302-225-0030-0	SPRING, SHIFTER	1	
4- 8	V680-100-0010-0	BALL, STEEL	1	
4- 9	1352-229-0040-0	STAY, BACK SHIFTER	1	
4-10	V720-101-9009-0	O-RING/P9	1	
4-11	1352-229-0050-0	PLATE, STAY SET	2	
4-12	V200-260-6012-0	BOLT/M6x12	2	
4-13	V401-260-0060-0	WASHER, SP/M6	2	
4-14	1352-229-1000-0	ARM, CHANGE	1	
4-15	V720-102-4016-0	O-RING/P16	1	
4-16	1365-229-0010-0	SHIFTER, SIDE CLUTCH	2	
4-17	1703-101-0200-0	COLLAR, SHIFTER	4	
4-18	1352-229-0060-0	PIN, SIDE CLUTCH	2	
4-19	V720-102-4010-0	O-RING/P10A	2	
4-20	1352-229-0070-0	ROD, SIDE CLUTCH	2	
4-21	V720-101-9010-0	O-RING/P10	2	

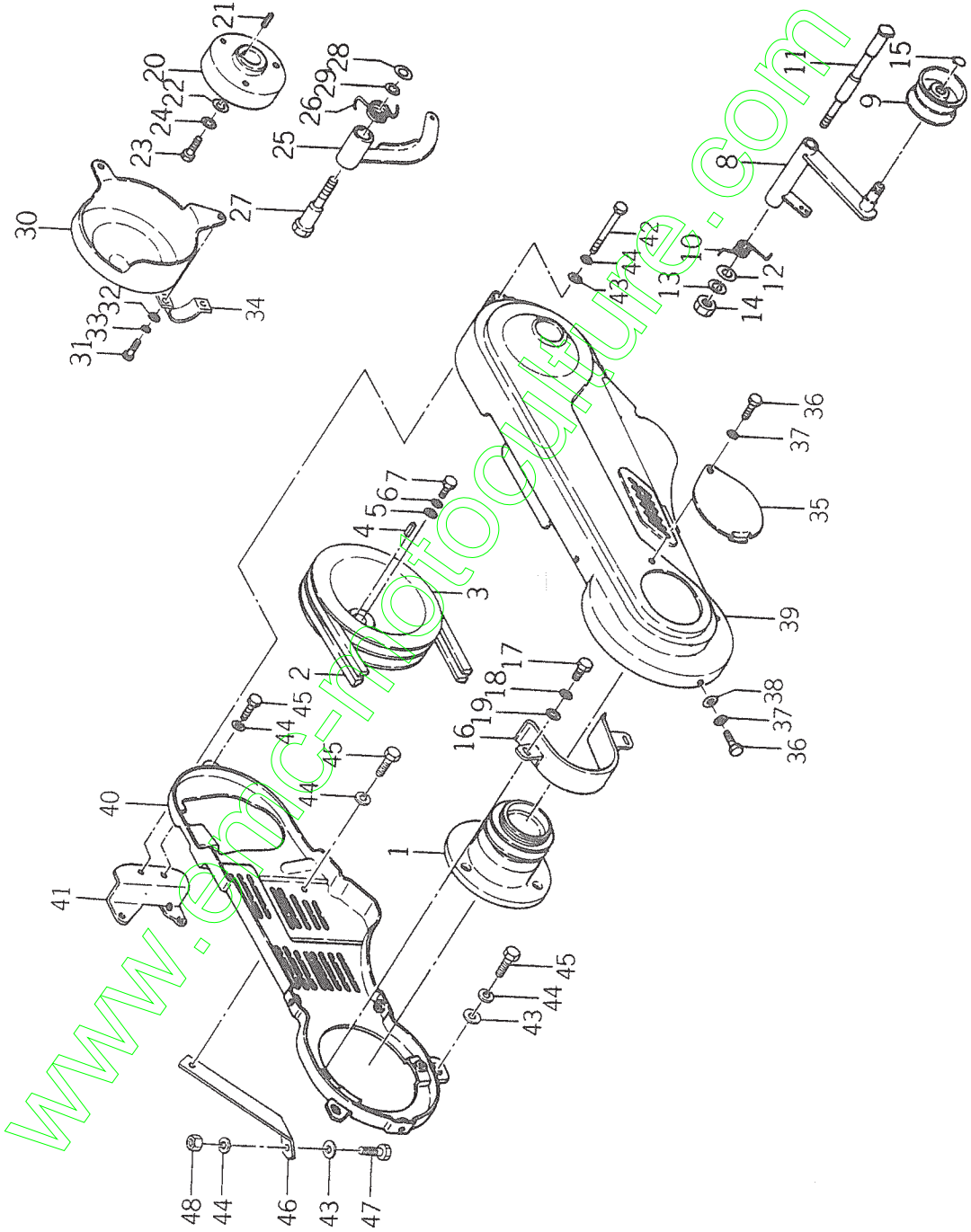
www.emc-motoculture.com

Fig. 5 SUB TRANSMISSION



Ref.No.	Parts No.	Description	Qty	Remarks
5- 1	1371-211-0012-0	CASE, SUB TRANSMISSION	1	
5- 2	V781-300-0002-0	PLUG /PT 1/8	2	
5- 3	1371-211-0022-0	PACKING	1	
5- 4	V201-260-8075-0	BOLT/M8x75	4	
5- 5	V401-260-0080-0	WASHER, SP/M8	4	
5- 6	1371-211-0030-0	COVER, CASE	1	
5- 7	1371-211-0040-0	PACKING, COVER	1	
5- 8	V201-260-8020-0	BOLT/M8x20	4	
5- 9	V401-260-0080-0	WASHER, SP/M8	4	
5-10	1371-211-0050-0	PIPE, BREATHER	1	
5-11	1340-211-0051-0	CAP, OIL	1	
5-12	1371-211-0060-0	SHAFT, PULLEY	1	
5-13	V600-110-6204-0	BEARING, RB/6204	2	
5-14	V703-100-0470-0	RING, SNAP B	1	
5-15	1371-211-0070-0	WASHER/21x30x2	1	
5-16	1352-217-0040-0	BUSH, SEAL/SI202513	1	
5-17	V744-125-4708-0	SEAL, OIL/TC25478	1	
5-18	1371-211-0080-0	GEAR, SUB COUNTER/17-20T	1	
5-19	1371-211-0090-0	SHAFT, SUB COUNTER	1	
5-20	V653-416-2420-0	BEARING, NR/TA1620	2	
5-21	1371-211-0100-0	WASHER/17x30x2	1	
5-22	1371-211-0111-0	WASHER	1	
5-23	V720-102-4016-0	O-RING/P16	1	
5-24	1371-211-0150-0	O-RING/S12	1	
5-25	1371-211-0120-0	PLATE, SET	1	
5-26	V200-260-6012-0	BOLT/M6x12	1	
5-27	V401-260-0060-0	WASHER, SP/M6	1	
5-28	1371-211-0130-0	GEAR, SUB CHANGE/17-19T	1	
5-29	1317-201-0040-0	KEY	1	
5-30	1371-211-1000-0	ARM, SUB CHANGE	1	
5-31	1371-211-0140-0	SHIFTER, SUB	1	
5-32	V720-100-3009-0	O-RING/P9	1	
5-33	1302-225-0030-0	SPRING, SHIFTER	1	
5-34	V680-100-0010-0	BALL, STEEL	1	
5-35	1371-211-2000-0	ARM, SUB	1	
5-36	V580-140-5024-0	PIN, SPRING/5x24	1	
5-37	V590-130-9070-0	WIRE/0.9x70	1	
5-38	1371-401-2000-0	LEVER, SUB CHANGE	1	
5-39	1371-401-3000-0	YOKE	2	
5-40	1371-401-0011-0	WIRE, SUB CHANGE ASSY	1	
5-41	V300-260-0060-0	NUT/M6	2	
5-42	1502-201-0040-0	PIN, JOINT	2	
5-43	V413-160-0060-0	WASHER/M6	2	
5-44	V500-152-0015-0	PIN, SPLIT/2x15	2	
5-45	1371-401-0020-0	ARM, WIRE	1	
5-46	V201-260-8020-0	BOLT/M8x20	1	
5-47	V401-260-0080-0	WASHER, SP/M8	1	
5-48	4106-105-3030-0	GRIP	1	

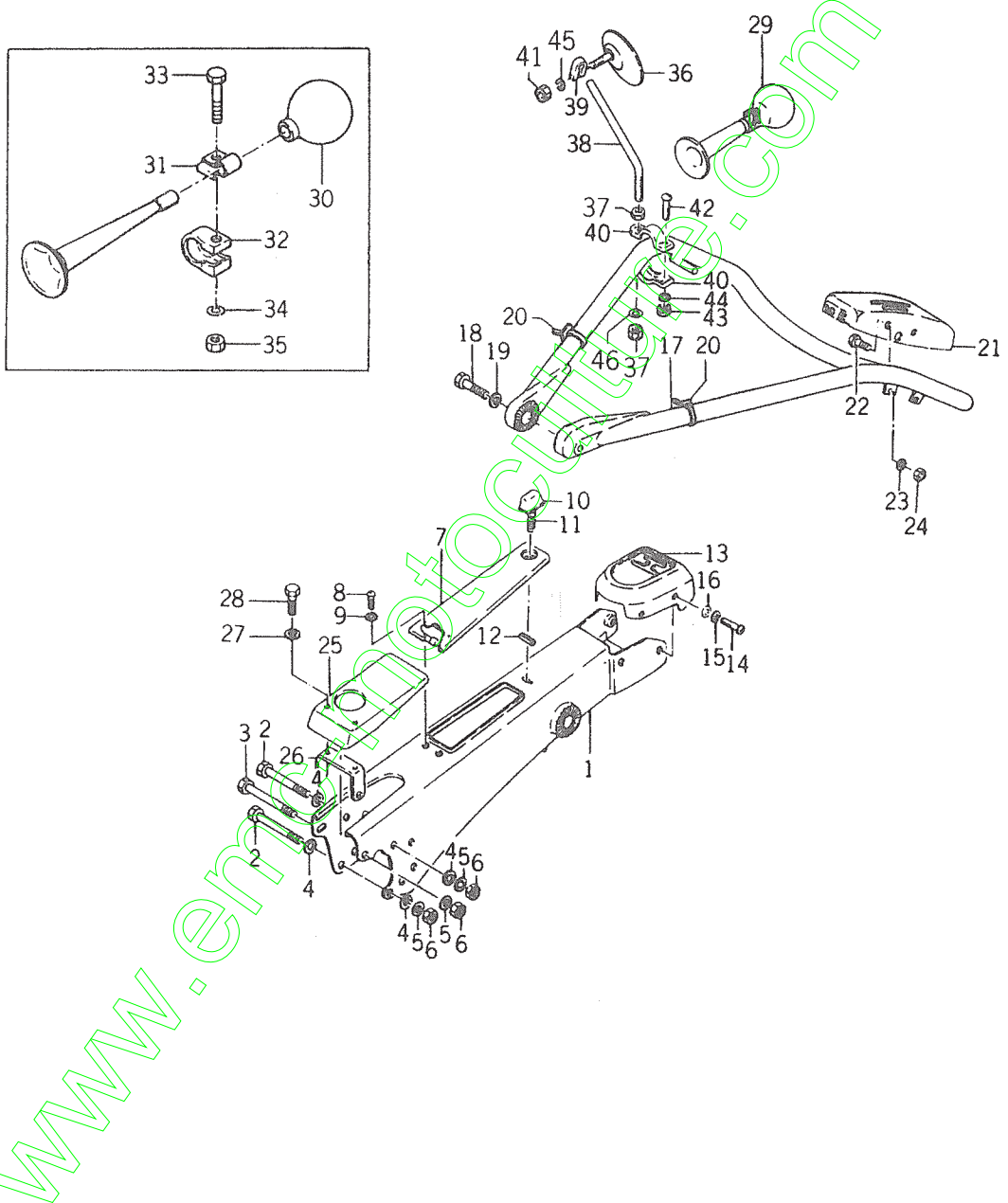
Fig. 6 TENSION and BRAKE SYSTEM



Ref.No.	Parts No.	Description	Qty	Remarks
6- 1	1371-202-0010-0	PULLEY, ENGINE/80	1	
6- 2	V817-200-0530-0	BELT, V/SB53	2	
6- 3	1371-202-0020-0	PULLEY, V/162	1	
6- 4	1317-201-0040-0	KEY	1	
6- 5	1324-205-0020-0	WASHER	1	
6- 6	V401-260-0080-0	WASHER, SP/M8	1	
6- 7	V201-260-8020-0	BOLT/M8x20	1	
6- 8	1371-203-2000-0	ARM, TENSION	1	
6- 9	1365-202-3000-0	PULLEY, TENSION A	1	
6-10	1352-202-0010-0	SPRING, TORQUE/28	1	
6-11	1371-203-0010-0	BOLT, TENSION	1	
6-12	V410-150-0120-0	WASHER/M12	1	
6-13	V401-160-0120-0	WASHER, SP/M12	1	
6-14	V300-260-0120-0	NUT/M12	1	
6-15	V704-140-0120-0	RING, SNAP/C 12	1	
6-16	1371-204-2000-0	STOPPER, BELT	1	
6-17	V201-260-8014-0	BOLT/M8x14	2	
6-18	V401-160-0080-0	WASHER, SP/M8	2	
6-19	V413-160-0080-0	WASHER/M8	2	
6-20	1352-209-0010-0	DRUM, BRAKE	1	
6-21	1352-209-0020-0	KEY	1	
6-22	1324-205-0020-0	WASHER	1	
6-23	V201-260-8020-0	BOLT/M8x20	1	
6-24	V401-160-0080-0	WASHER, SP/M8	1	
6-25	1352-209-1000-0	SHOE, BRAKE	1	
6-26	1352-209-0031-0	SPRING, TORQUE/25	1	
6-27	1352-209-0040-0	BOLT, BRAKE	1	
6-28	V413-160-0100-0	WASHER/M10	1	
6-29	V401-160-0100-0	WASHER, SP/M10	1	
6-30	1352-209-0051-0	COVER, BRAKE	1	
6-31	V200-260-6012-0	BOLT/M6x12	2	
6-32	V413-160-0060-0	WASHER/M6	2	
6-33	V401-260-0060-0	WASHER, SP/M6	2	
6-34	1352-621-0010-0	CLAMP	1	
6-35	1371-612-0010-0	COVER, PULLEY	1	
6-36	V200-260-6010-0	BOLT/M6x10	4	
6-37	V401-160-0060-0	WASHER, SP/M6	4	
6-38	V413-160-0060-0	WASHER/M6	3	
6-39	1371-612-2000-0	COVER, BELT A	1	
6-40	1371-612-2100-0	COVER, BELT B	1	
6-41	1371-612-2200-0	STAY, COVER A	1	
6-42	V201-260-8090-0	BOLT/M8x90	1	
6-43	V413-160-0080-0	WASHER/M8	4	
6-44	V401-160-0080-0	WASHER, SP/M8	6	
6-45	V201-260-8014-0	BOLT/M8x14	4	
6-46	1371-612-0020-0	STAY, COVER B	1	
6-47	V201-260-8025-0	BOLT/M8x25	1	
6-48	V300-260-0080-0	NUT/M8	1	

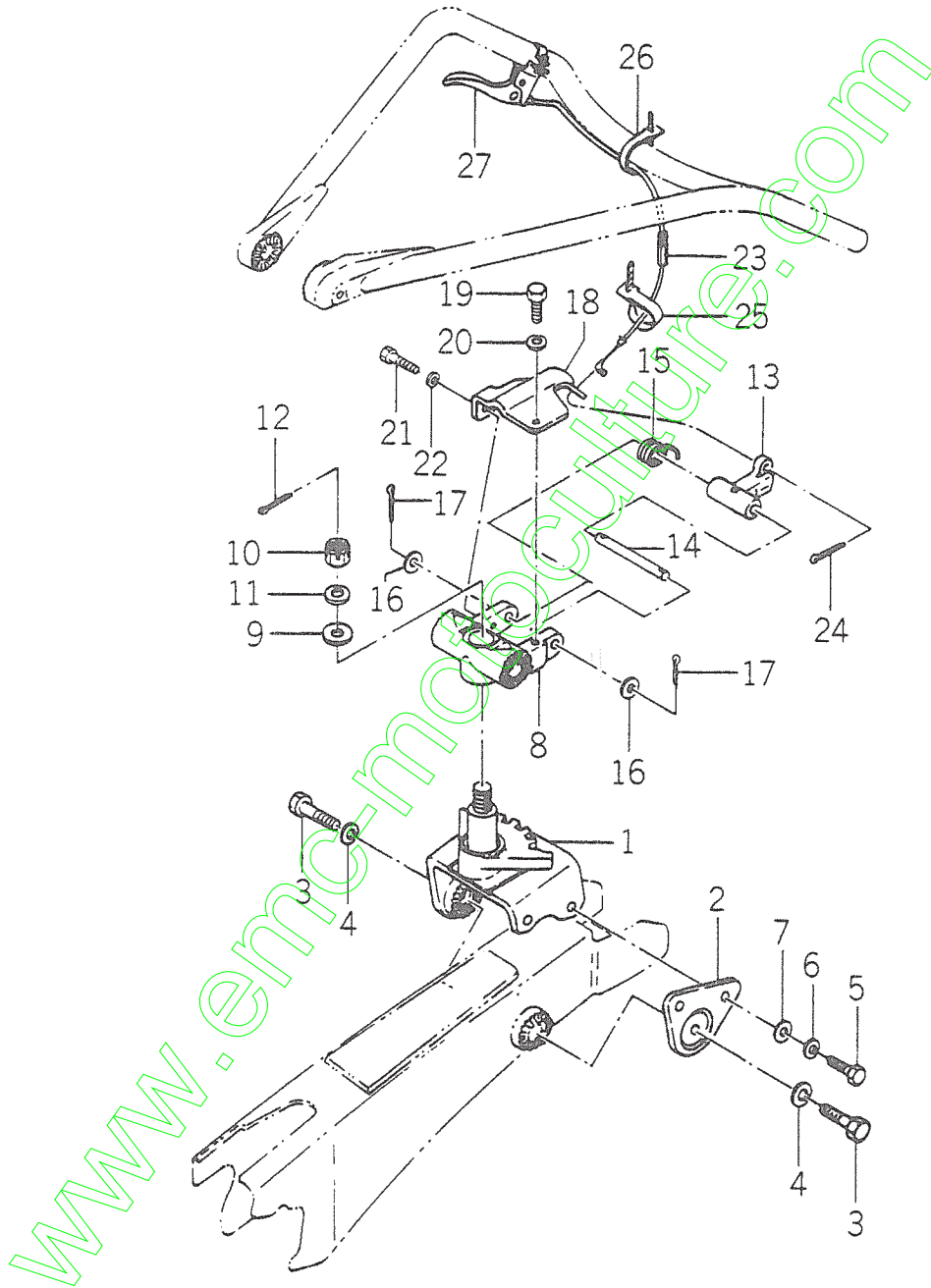
Fig. 7

HANDLE FRAME



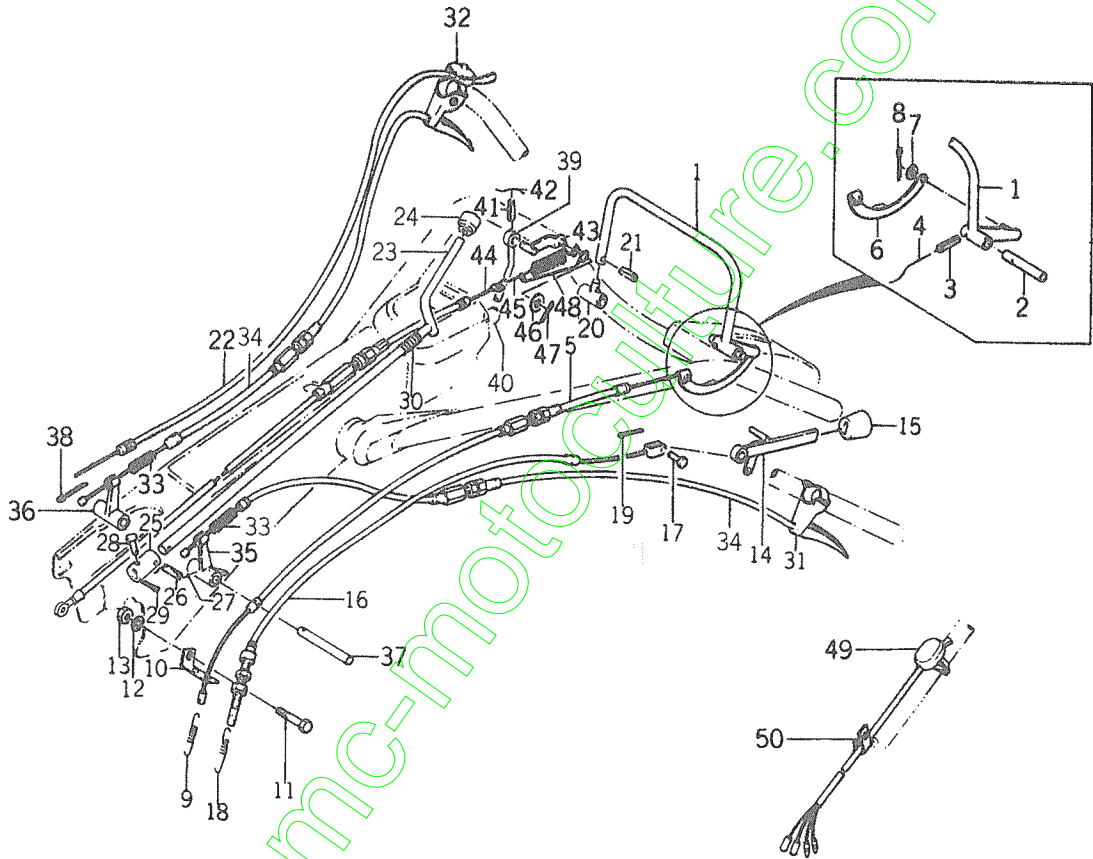
Ref.No.	Parts No.	Description	Qty	Remarks
7- 1	1368-301-1002-0	FRAME, HANDLE	1	
7- 2	V201-261-0120-0	BOLT/M10×120	2	
7- 3	V201-261-0125-0	BOLT/M10×125	1	
7- 4	V413-160-0100-0	WASHER/M10	4	
7- 5	V401-260-0100-0	WASHER, SP/M10	3	
7- 6	V300-260-0100-0	NUT/M10	3	
7- 7	1365-301-2001-0	COVER, BOX	1	
7- 8	V111-165-0012-0	SCREW/M5×12 P=0.8	2	
7- 9	V401-260-0050-0	WASHER, SP/M5	2	
7-10	1352-301-0010-0	KNOB, SET	1	
7-11	1352-301-0020-0	SPRING, PRESS/14	1	
7-12	V580-140-3018-0	PIN, SPRING/W 3×18	1	
7-13	1390-301-2000-0	PANEL, HANDLE	1	
7-14	V111-166-0012-0	SCREW/M6×12	4	
7-15	V401-260-0060-0	WASHER, SP/M6	4	
7-16	V413-160-0060-0	WASHER/M6	4	
7-17	1352-311-1000-0	PIPE, HANDLE	1	
7-18	V201-461-2045-0	BOLT/M12×45 9T	2	
7-19	V401-260-0120-0	WASHER, SP/M12	2	
7-20	1427-621-0260-0	CLAMP, HARNESS/150	2	
7-21	1371-401-1000-0	BOX, CLUTCH	1	
7-22	V201-260-8016-0	BOLT/M8×16	2	
7-23	V401-260-0080-0	WASHER, SP/M8	2	
7-24	V300-260-0080-0	NUT/M8	2	
7-25	1368-301-0010-0	COVER, HANDLE	1	
7-26	1368-301-3000-0	HOLDER, COVER	1	
7-27	V401-260-0060-0	WASHER, SP/M6	2	
7-28	V200-260-6120-0	BOLT/M6×12	2	
7-29	1352-600-0520-0	HORN ASSY	1	★
7-30	1352-621-0030-0	•GRIP	1	★
7-31	1352-621-0040-0	•BAND	1	★
7-32	1366-651-0020-0	•BAND/27	1	★
7-33	V201-261-0050-0	•BOLT/M10×50	1	★
7-34	V401-260-0100-0	•WASHER, SP/M10	1	★
7-35	V300-260-0100-0	•NUT/M10	1	★
7- 0-1	1386-622-2000-0	MIRROR, R VIEW ASSY	1	★
7-36	1386-622-2010-0	•MIRROR	1	★
7-37	V300-260-0100-0	•NUT/M10	2	★
7-38	1386-622-2020-0	•POLE	1	★
7-39	1386-622-2040-0	•METAL, SET	1	★
7-40	1386-622-2030-0	•BAND	2	★
7-41	V300-260-0080-0	•NUT/M8	1	★
7-42	1386-622-2050-0	•SCREW	1	★
7-43	V300-260-0060-0	•NUT/M6	1	★
7-44	V401-260-0060-0	•WASHER, SP/M6	1	★
7-45	V401-260-0080-0	•WASHER, SP/M8	1	★
7-46	V401-260-0100-0	•WASHER, SP/M10	1	★

Fig. 8 HANDLE REVOLUTION ASSY



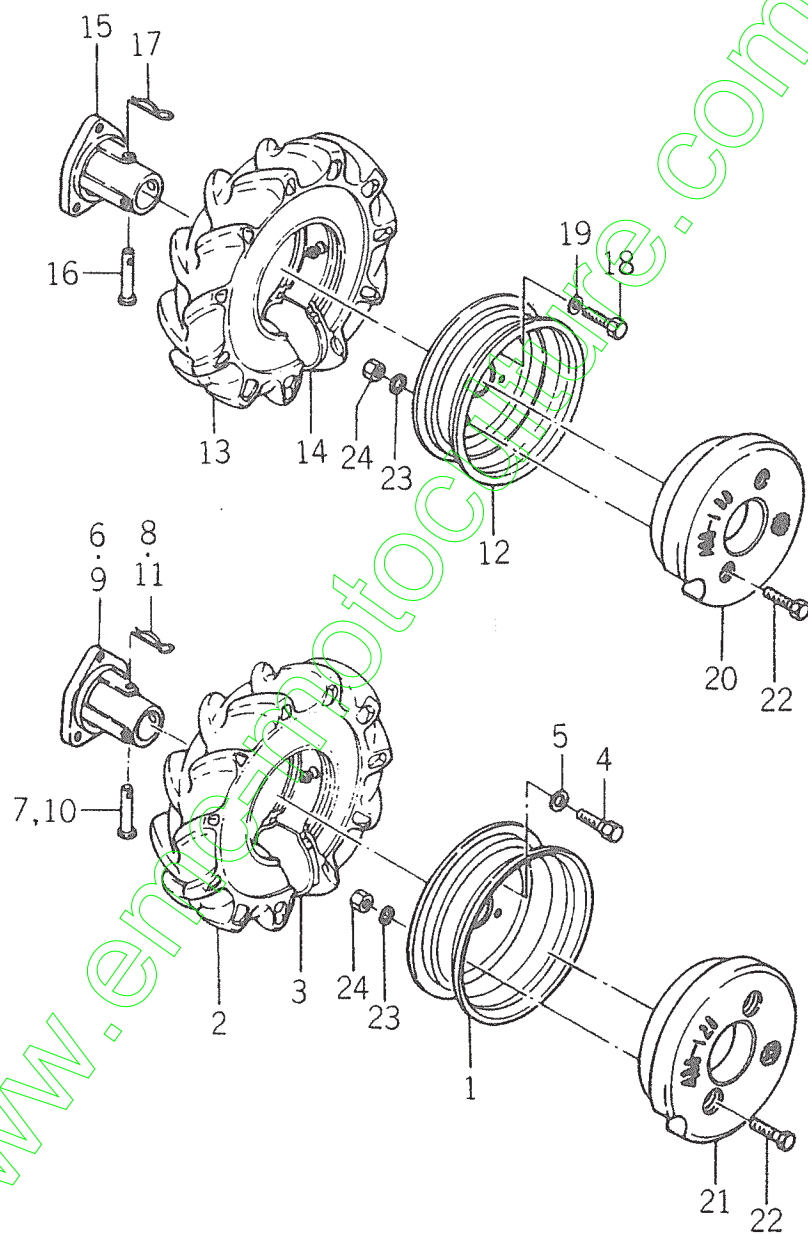
Ref.No.	Parts No.	Description	Qty	Remarks
8- 0-1	1372-351-0000-0	REVOLUTION, HANDLE ASSY	1	
8- 1	1372-351-2001-0	•BRACKET	1	
8- 2	1372-351-2100-0	•PLATE, SET	1	
8- 3	V201-461-2045-0	•BOLT/M12×45 9T	2	
8- 4	V401-160-0120-0	•WASHER, SP/M12	2	
8- 5	V201-461-0025-0	•BOLT/M10×25 9T	2	
8- 6	V401-160-0100-0	•WASHER, SP/M10	2	
8- 7	V413-160-0100-0	•WASHER/M10	2	
8- 8	1372-351-0010-0	•METAL, BRACKET	1	
8- 9	1372-351-0020-0	•WASHER/17×40×5	1	
8-10	V321-260-0160-0	•NUT, SLOTTED/M16	1	
8-11	V401-160-0160-0	•WASHER, SP/M16	1	
8-12	V500-154-0035-0	•PIN, SPLIT/4×35	1	
8-13	1372-351-0031-0	•METAL, LOCK	1	
8-14	1324-353-0040-0	•PIN, NAIL	1	
8-15	1324-353-0050-0	•SPRING, TORQUE/36	1	
8-16	V413-160-0120-0	•WASHER/M12	2	
8-17	V500-153-0020-0	•PIN, SPLIT/3×20	2	
8-18	1372-351-0040-0	•HOLDER, WIRE	1	
8-19	V201-260-8016-0	•BOLT/M8×16	1	
8-20	V401-160-0080-0	•WASHER, SP/M8	1	
8-21	V200-260-6035-0	•BOLT/M6×35	1	
8-22	V401-160-0060-0	•WASHER, SP/M6	1	
8-23	1372-351-0050-0	•WIRE, HANDLE LOCK	1	
8-24	V500-152-5015-0	•PIN, SPLIT/25×15	1	
8-25	1376-402-0030-0	•BAND, WIRE/140	1	
8-26	1427-621-0260-0	•CLAMP, HARNESS/150	1	
8-27	1372-351-2200-0	•LEVER, LOCK ASSY	1	

Fig. 9 CONTROL LEVER



Ref.No.	Parts No.	Description	Qty	Remarks
9- 1	1368-401-2000-0	LEVER, ARCH	1	
9- 2	1368-401-0010-0	PIN, CLUTCH	1	
9- 3	V580-140-4022-0	PIN, SPRING/W 4x22	1	
9- 4	V590-130-9100-0	WIRE/0.9x100	1	
9- 5	1372-401-0011-0	WIRE, CLUTCH	1	
9- 6	1352-405-1010-0	TRIGGER, WIRE	1	
9- 7	V413-160-0080-0	WASHER/M8	1	
9- 8	V500-152-0015-0	PIN, SPLIT/2x15	1	
9- 9	1352-404-0040-0	SPRING, CLUTCH	1	
9-10	1371-401-0030-0	STOPPER, WIRE	1	
9-11	V201-260-8075-0	BOLT/M8x75	1	
9-12	V401-260-0080-0	WASHER, SP/M8	1	
9-13	V300-260-0080-0	NUT/M8	1	
9-14	1352-404-6002-0	LEVER, BRAKE	1	
9-15	1352-404-0070-0	KNOB, LEVER/24	1	
9-16	1372-401-0020-0	WIRE, BRAKE	1	
9-17	1352-404-0090-0	PIN/6x10	1	
9-18	1352-404-0100-0	SPRING, BRAKE	1	
9-19	V500-152-0015-0	PIN, SPRING/2x15	1	
9-20	1352-404-8000-0	HOLDER, CLUTCH LEVER	1	
9-21	V580-140-3015-0	PIN, SPRING/W 3x15	1	
9-22	1326-402-0020-0	WIRE, THROTTLE	1	
9-23	1372-451-2000-0	LEVER, CHANGE	1	
9-24	3563-102-0020-0	GRIP	1	
9-25	1352-403-0011-0	JOINT	1	
9-26	V580-140-5028-0	PIN, SPRING/W 5x28	1	
9-27	V590-130-9080-0	WIRE/0.9x80	1	
9-28	1352-403-0020-0	PIN/5x28	1	
9-29	V500-151-6012-0	PIN, SPLIT/16x12	1	
9-30	1352-403-0030-0	SPRING, PRESS/65	1	
9-31	1352-406-2000-0	LEVER, SIDE CLUTCH LH ASSY	1	
9-32	1368-451-2000-0	LEVER, SIDE CLUTCH RH ASSY	1	
9-33	1317-406-0020-0	SPRING	2	
9-34	1372-406-0010-0	WIRE, SIDE CLUTCH	2	
9-35	1352-406-0020-0	ARM, SIDE CLUTCH LH	1	
9-36	1352-406-0030-0	ARM, SIDE CLUTCH RH	1	
9-37	1352-406-0040-0	PIN, SIDE CLUTCH	1	
9-38	V500-153-0018-0	PIN, SPLIT/3x18	1	
9-39	1352-416-1002-0	LEVER, STAND	1	
9-40	1414-117-0040-0	KNOB, LEVER/30	1	
9-41	V580-140-4022-0	PIN, SPRING/W 4x22	1	
9-42	V590-130-9070-0	WIRE/0.9x70	1	
9-43	1352-416-2000-0	ARM, WIRE	1	
9-44	1368-416-0010-0	WIRE, STAND ASSY	1	
9-45	1352-416-0021-0	SPRING, TENSION/63	1	
9-46	V410-160-0080-0	WASHER/M8	2	
9-47	V500-152-0015-0	PIN, SPLIT/2x15	2	
9-48	1352-416-0030-0	SPRING, STOPPER	1	
9-49	1366-600-0510-0	SWITCH, LIGHT ASSY	1	
9-50	1317-621-0020-0	CLAMP	1	

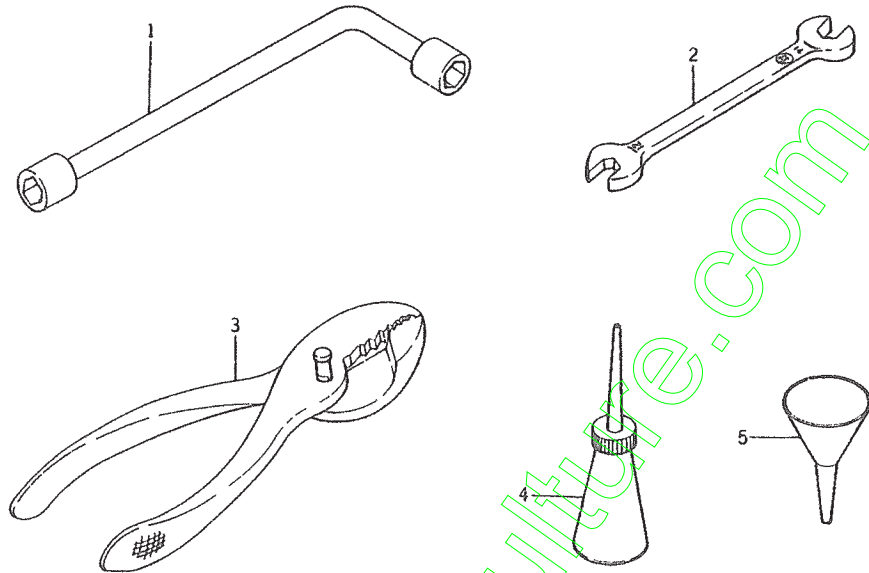
Fig. 10 WHEEL



Ref.No.	Parts No.	Description	Qty	Remarks
10- 1	1365-242-0010-0	DRUM, WHEEL/3 1/2-JX12DC	2	★
10- 2	V882-024-0012-0	TIRE/400-12 (AGI-12)	2	★
10- 3	V883-004-0012-0	TUBE/400-12	2	★
10- 4	V201-261-2020-0	BOLT/M12×20	6	★
10- 5	V401-260-0120-0	WASHER, SP/M12	6	★
10- 6	1340-241-0010-0	BOSS, WHEEL	2	
10- 7	1365-241-0020-0	PIN, WHEEL BOSS	4	
10- 8	1305-241-0010-0	PIN, HAIR	4	
10- 9	1340-241-0010-0	BOSS, WHEEL	2	
10-10	1365-241-0020-0	PIN, WHEEL BOSS	4	
10-11	1305-241-0011-0	PIN, HAIR	4	
10-12	1365-241-0010-0	DRUM, WHEEL/3.50BX10DC	2	★
10-13	V882-024-0010-0	TIRE/400-10	2	★
10-14	V883-004-0010-0	TUBE/400-10	2	★
10-15	1340-241-0010-0	BOSS, WHEEL	2	★
10-16	1365-241-0020-0	PIN, WHEEL BOSS	4	★
10-17	1305-241-0010-0	PIN, HAIR	4	★
10-18	V201-261-2020-0	BOLT/M12×20	6	★
10-19	V401-260-0120-0	WASHER, SP/M12	6	★
10-20	1365-931-0010-0	WEIGHT, WHEEL/400-10D	2	★
10-21	1365-931-0020-0	WEIGHT, WHEEL/400-12D	2	★
10-22	V201-261-2100-0	BOLT/M12×100	8	★
10-23	V401-160-0120-0	WASHER, SP/M12	8	★
10-24	V300-260-0120-0	NUT/M12	8	★

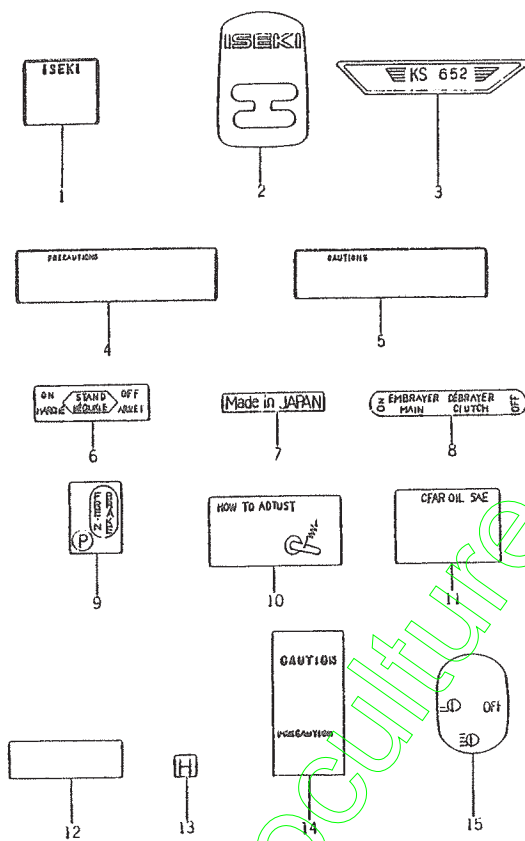
www.emc-motoculture.com

Fig. 11 MARKS



Ref.No.	Parts No.	Description	Qty	Remarks
11- 1	1390-941-0010-0	MARK, MODEL	1	
11- 2	1390-941-0020-0	MARK, MAIN CHANGE	1	
11- 3	1390-901-0050-0	MARK, BELT COVER	1	
11- 4	1390-941-0030-0	MARK, CAUTION A	1	
11- 5	1390-941-0040-0	MARK, CAUTION B	1	
11- 6	1370-962-0020-0	MARK, STAND	1	
11- 7	1324-957-0120-0	MARK, MADE IN JAPAN	1	
11- 8	1351-952-0020-0	MARK, CLUTCH	1	
11- 9	1352-952-0030-0	MARK, BRAKE	1	
11-10	1352-952-0040-0	MARK, BELT ADJUST	1	
11-11	1368-952-0010-0	MARK, OIL	1	
11-12	1371-952-0010-0	MARK, SUB CHANGE A	1	
11-13	1371-952-0020-0	MARK, SUB CHANGE B	1	
11-14	1364-902-0090-0	TAG, OIL CAUTION	1	
11-15	1366-902-0180-0	MARK, SWITCH	1	

Fig. 12 TOOLS



Ref.No.	Parts No.	Description	Qty	Remarks
12- 1	1305-906-0010-0	SPANNER, BOX / L	1	
12- 2	V920-551-2014-0	SPANNER / 12-14	1	
12- 3	V936-150-0150-0	PLIERS / 150	1	
12- 4	1352-906-0010-0	OILER	1	
12- 5	1352-906-0020-0	FUNNEL	1	



**Yvan Béal - 21, av. de l'Agriculture - B.P. 16
Z.I. du Brézet - 63014 Clermont-Ferrand Cedex 2
Tél : 04 73 91 93 51 - Télécopie : 04 73 90 23 11
www.yvanbeal.fr - E-mail : info@yvanbeal.fr
R.C.S. Clermont-Fd B 304 973 886 - S.A.S. au capital de 612 000 €**