



LT4140G/LT4130G



1.1995

Spare parts

Ersatzteile

Pièces détachées

Reserve onderdelen

Repuestos

Reservdelar

Replaces

Ersetzt

Remplace

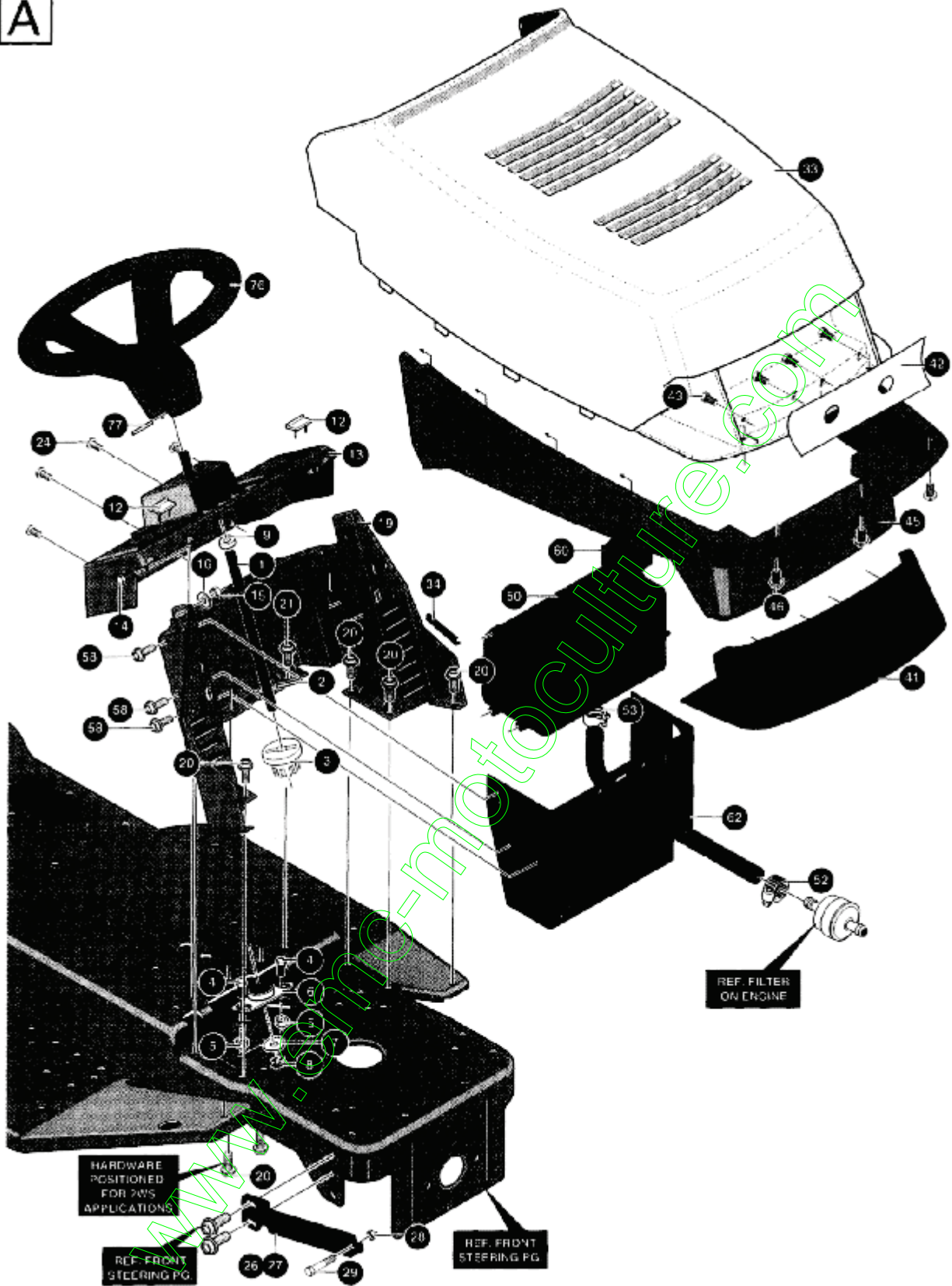
Vervangt

Reemplaza

Ersätter

106 23 05-64

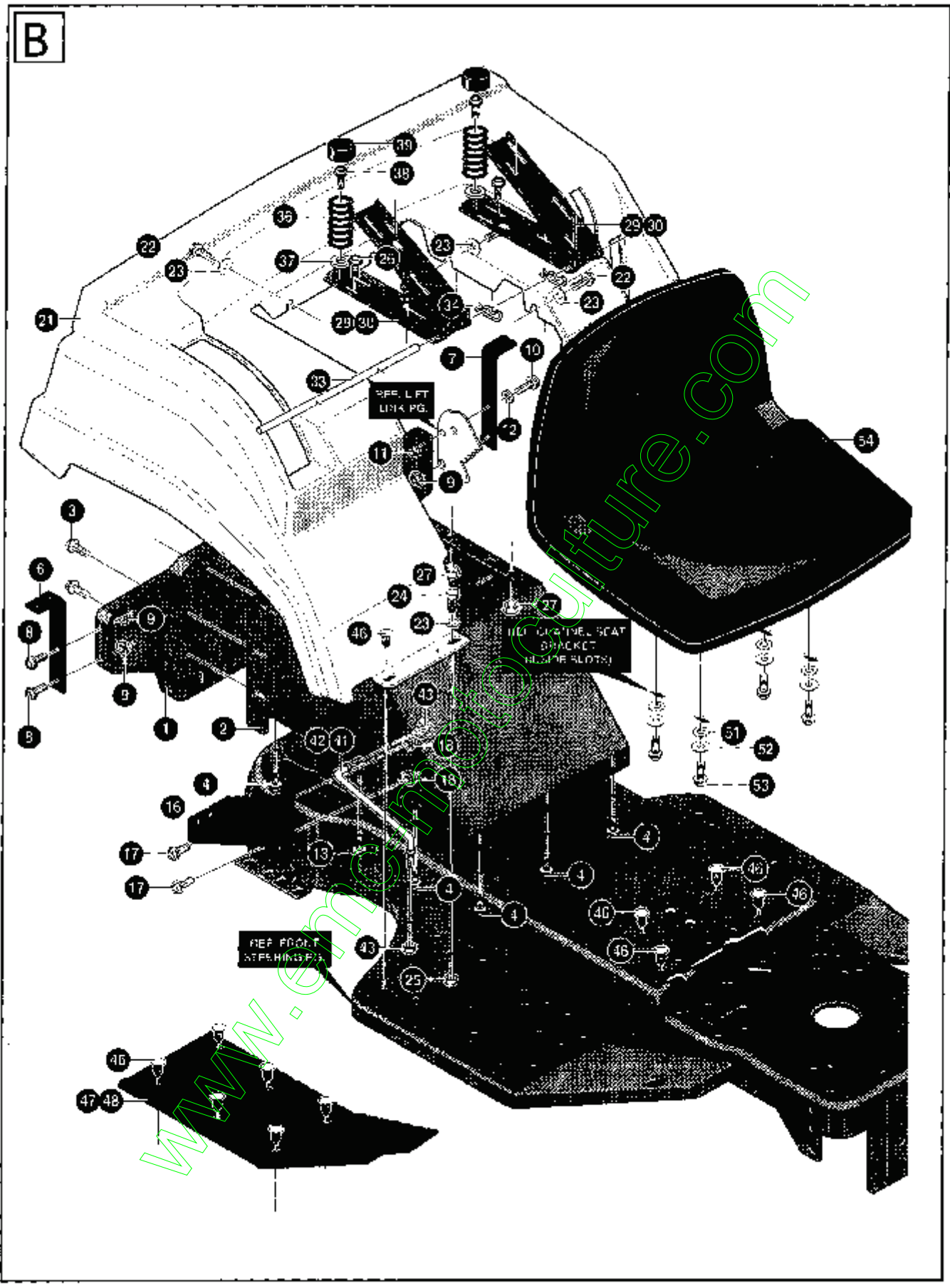
A



KEY#	PART #	DESCRIPTION CITY.	QTY.
1	533 30 23-07	SHAFT, STEERING EURO LT SHORT	1
2	533 30 25-24	PIN, DOWEL STR ERO LT	1
3	533 30 23-14	PINION, STEERING	1
4	533 32 37-31	SCREW, 5/16-24 X .75 (TO 30-35 FT#)	2
5	533 07 11-00	NUT, 5/16-24 HEXWDFLLK.....	2
6	533 30 24-98	BEARING, FLANGED .500 ID X .OD X .75	1
7	533 00 29-68	WASHER, FLAT .504 X .75 X .059	1
8	533 02 08-64	RING, RET E .39 X .04 TRU 5133-50	1
9	533 30 32-28	BUSHING STEER, SHIFT UPPER.....	1
12	533 32 18-10	BUMPER, HOOD/DASH, EURO, TOP.....	2
13	533 33 13-79	DASH, TALL	1
14	874 76 04-12	SCREW, 1/4-20 X .75 HHC	2
15	533 00 15-02	NUT, 1/4-20 REGHEXCTRLK.....	2
16	533 12 03-92	WASHER, FLAT .281 X .63 X .065	2
19	533 30 23-31	DASH, LOWER SHORT, LT	1
20	533 03 54-97	SCREW, 5/16-18 X .50 WAHTAP	8
21	533 04 52-63	SCREW, 5/16-18 X .37 WAHTAP	2
23	533 99 53-46	SCREW, 1/4-20 X .50 WAHTAP	2
24	533 30 58-50	SCREW, 1/4-20 X .50 PHPNTAP	4
26	533 30 88-98	BRACKET, HOOD, RH, H19/G16.....	1
27	533 30 88-97	BRACKET, HOOD, LH	1
28	533 00 14-98	NUT, 5/16-18 REGHEXCTRLK	2
29	533 02 50-86	BOLT, .500 X .375 HHSH 5/16-18	2
33	533 33 21-13	HOOD, UPPER	1
34	533 05 21-51	EDGING, WIDE BLACK	78"
41	533 33 11-77	LENS, EURO II HOOD SMOKED GREY	1
42	533 31 05-34	DECAL, REFLECTOR VER II HOOD.....	1
43	533 30 03-02	SCREW, #10 X .50 HHTAPPST	4
45	533 33 11-84	GRILLE, MOLD/GREY	1
46	533 31 83-04	SCREW, 1/4-14X .75 PHPNHDTAP	3
50	533 30 58-20	ASSEMBLY, GAS TANK 1.5GALLON (OPTION)	1
52	532 12 34-87	CLAMP, FUEL LINE	1
53	532 12 34-87	CLAMP HOSE SCREW TYPE	1
58	533 30 03-03	SCREW, 25 X .75 X .51 HHWAPLASTITE	6
60	533 01 25-01	CAP, FUEL 2.5" THROAT	1
62	533 32 47-95	HEAT SHIELD, ERO 1.5 & 3 GALLON	1
76	533 33 08-47	STEERING WHEEL	1
77	533 45 63-78	PIN, SPRING .250 DIA X 2.00 LONG HVPL	1

www.emm.com

B

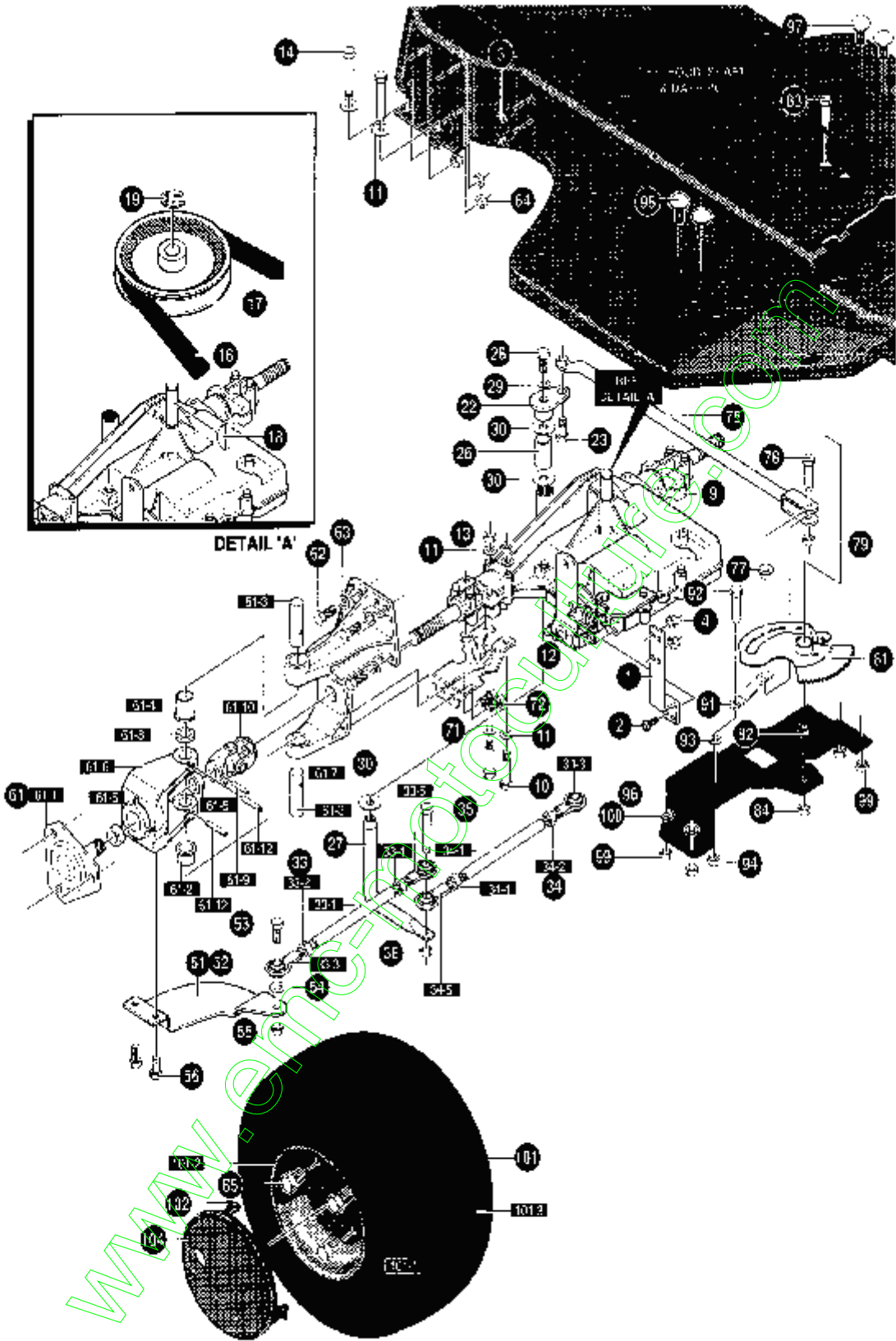


KEY #	PART #	DESCRIPTION	QTY
1	533 32 20-68	SEAT SUPPORT, ELECTRIC LIFT	1
2	533 32 20-69	SUPPORT, FENDER & SEAT ELECTRIC/LIFT	1
3	533 03 54-98	SCREW, 5/16-18 X .75 WAHTAP	5
4	533 03 54-97	SCREW, 5/16-18 X .50 WAHTAP	10
6	533 30 63-99	SUPPORT, FENDER, RIGHT	1
7	533 30 63-97	SUPPORT, FENDER, LEFT	1
8	533 05 60-30	SCREW, 5/16-18 X .75 WDFLLK	3
9	533 05 52-73	NUT, 5/16-18 HXWDFLLK	3
10	874 76 04-12	SCREW, 1/4-20 X .75 HHC	1
11	533 05 13-35	NUT, 1/4-20 WDFLWHIZ-LK	1
12	533 12 03-85	WASHER, FLAT .250 X .56 X .049	1
13	533 18 00-77	SCREW, 5/16-18 X .75	1
16	533 30 53-81	SUPPORT, SHIFT PLATE	1
17	533 05 60-30	SCREW, 5/16-18 X .75 WDFLLK	2
18	533 05 52-73	NUT, 5/16-18 HXWDFLLK	2
21	533 31 05-76	FENDER, EURO, GT	1
22	533 04 48-11	SCREW, 1/4-20 X .75 WAHTAP	6
23	734 11 52-01	WASHER, FLAT .281 X 1.00 X .063	8
24	874 76 04-12	SCREW, 1/4-20 X .75 HHC	2
25	533 00 15-02	NUT, 1/4-20 REGHEXCTRLK	2
26	533 05 60-30	SCREW, 5/16-18 HXWDFLLK	4
27	533 00 14-98	NUT 5/16-18 REGHEXCTRLK	4
29	533 30 28-97	CHANNEL, SEAT, RH	2
30	533 30 54-24	CHANNEL, SEAT, LH	2
33	533 30 44-81	ROD, SEAT SUPPORT	1
34	533 03 63-68	PIN, HAIR .072 DIA X 1.13 LONG	2
36	533 33 04-63	SPRING, SEAT 1.50 OD X 2.25 LONG	2
37	533 12 03-93	WASHER, FLAT .344 X .69 X .065	2
38	533 03 54-98	SCREW, 5/16-18 X .75 WAHTAP	2
39	533 05 69-07	COVER, SEAT SPRING 1.5 ID X 1.0 LONG	2
41	533 31 93-88	SUPPORT, FOOTREST STIFFNER, RH	1
42	533 31 93-87	SUPPORT, FOOTREST STIFFNER,	1
43	533 00 14-98	NUT, 5/16-18 REGHEXCTRLK	4
46	533 31 10-87	FASTENER, RATCHET GREY	18
47	533 31 48-88	FOOT PAD ASSEMBLY, RH, EURO W/ADH	1
48	533 31 48-89	FOOT PAD ASSEMBLY, LH, EURO W/ADH	1
51	533 12 03-93	WASHER, FLAT .344 X .69 X .065	4
52	533 12 06-38	WASHER, HVSPTLK .328 X .60 X .0	4
53	533 18 00-77	SCREW, 5/16-18 X .75 HHC	4
54	533 31 03-84	SEAT, W/SW HOLE	1

www.emm.com

KEY#	PART#	DESCRIPTION	QTY
2	533 30 52-80	COVER, SECTOR BOLT PLAS GREY	1
6	533 03 02-32	BRACKET, FRONT AXLE SUPPORT	1
7	533 05 60-30	SCREW, 5/16-18 X .75 WDFLLK	2
8	533 05 52-73	NUT, 5/16-18 HXWDFLLK	6
9	533 05 36-52	SCREW, 5/16-18 X .75 HXWDFL	4
10	533 30 71-12	PLUG, FRONT AXLE 1.938 DIA X .062~	2
12	A	SUB-ASSEMBLY FRONT AXLE, EURO, LT, SHORT.	1
12-5	533 31 06-70	AXLE ASSEMBLY, FRONT WELD, BLACK	1
12-10	533 18 00-77	SCREW, 5/16-18 X .75 HHC	4
12-15	533 00 14-98	NUT, 5/16-18 REGHEXCTRLK	4
12-20	533 30 53-40	ASSEMBLY, SPINDLE, RH, EURO, LT	1
12-21	533 99 64-16	WASHER, FLAT .391 X 1.00 X .125	2
12-22	533 03 66-25	RING, RETEX .57 X .05 TRU 5133-75	1
12-25	533 30 53-39	ASSEMBLY, SPINDLE, LH, EURO, LT	1
12-26	533 31 70-19	ARM STEERING UPPER, BLACK	1
12-27	533 18 01-34	SCREW, 3/8-16 X 2.50 HHC	1
12-28	533 00 14-99	NUT, 3/8-16 REGHXCTRLK	1
13	874 78 06-48	SCREW, 3/8-16 X 3.00 HHC	2
14	533 00 24-83	WASHER, .39 ID X 1.25 D X .07 BELLVIL	2
15	533 00 14-99	NUT, 3/8-16 REGHXCTRLK	2
17	533 00 07-06	ZERK, GREASE FITTING	4
18	533 00 06-42	WASHER, FLAT (.75 X) 1.31 X .075	4
19	533 03 66-25	RING, RETEX .57 X .05 TRU 5133-75	2
23	533 30 03-28	TIE ROD, .625 DIA GROUND ENGAGER	1
24	533 12 03-69	NUT, 3/8-24 REGHEX	2
25	533 12 03-82	WASHER, REGSPTLK .393 X .68 X .10	2
26	533 30 29-08	LINK ASSEMBLY, .625 DIA DRAG, LT, 4WS	1
26-1	533 05 71-58	BALL JOINT, 3/8 THD SHORT STUD	2
26-2	533 12 49-25	NUT, 3/8-24 REGHEXJAM	2
26-3	533 30 29-07	LINK, .625 DIA DRAG, LT, 4WS	1
27	533 12 03-82	WASHER, REGSPTLK .393 X .68 X .10	2
28	533 12 49-25	NUT, 3/8-24 REGHEXJAM	2
41	533 32 15-15	TIRE&RIM, PU 15X6.0X6	2
41-1	533 02 41-67	VALVE STEM	
41-2	533 32 15-16	RIM, WHEEL	
41-3	533 31 44-16	BEARING, FLANGE	
41-4	533 31 67-02	TIRE 15X6.0X6	
44	533 30 44-44	HUB CAP, 6" EURO	2
45	533 30 66-69	CLIP, HUBCAP TINN #C25467-017-4	8

D

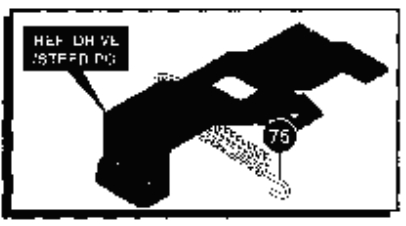
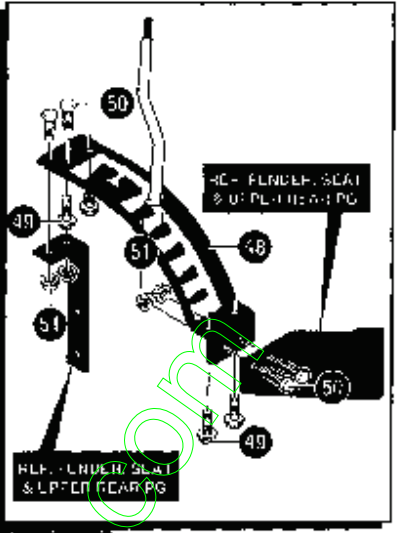
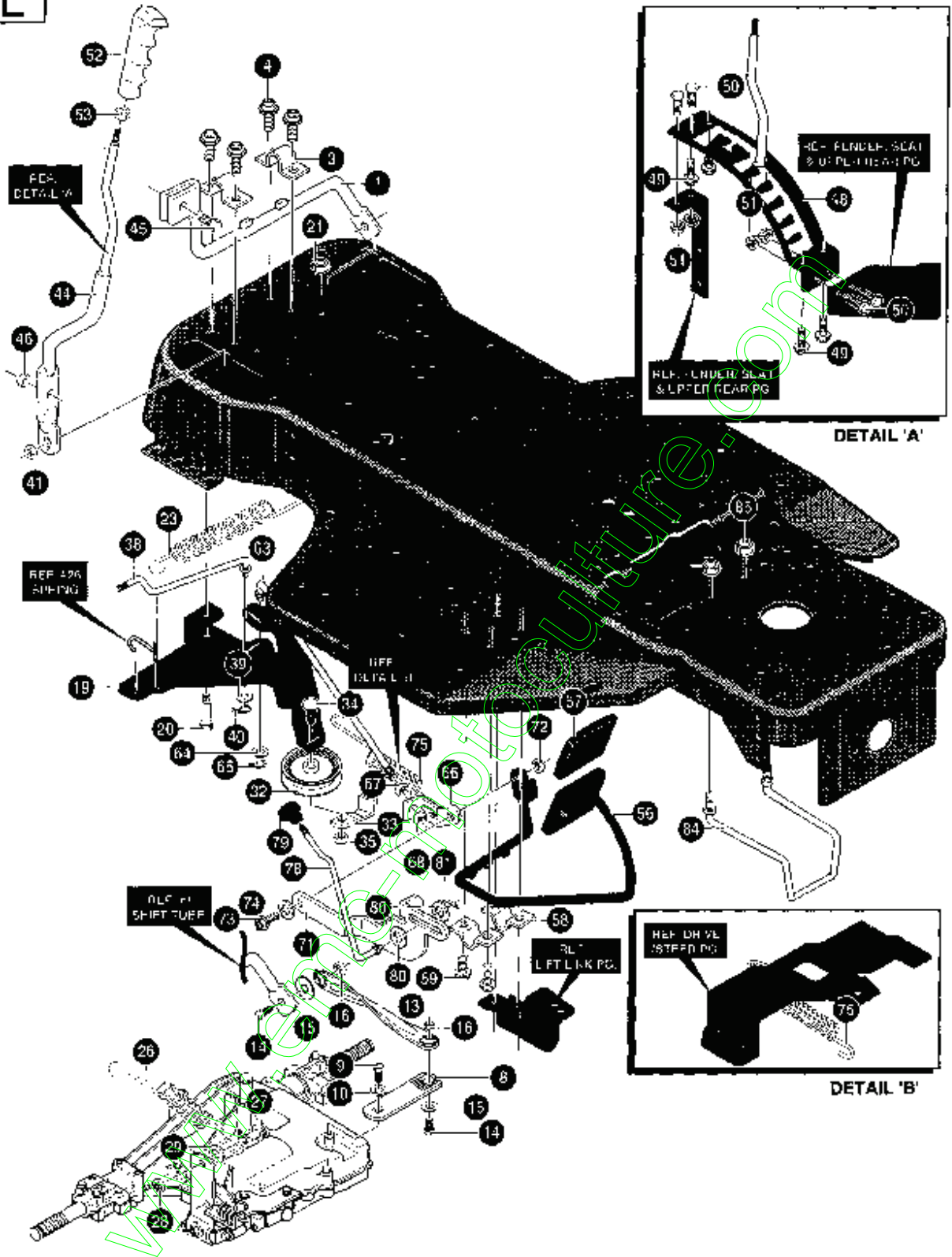


KEY #	PART #	DESCRIPTION	QTY
1	533 32 13-82	BRACKET, STABILIZER EURO	1
2	533 03 54-98	SCREW, 5/16-18 X .75 WAHHTAP	1
3	533 18 00-77	SCREW, 5/16-18 X .75 HHC	2
4	533 00 14-98	NUT, 5/16-18 REGHEXCTRLK	2
9	*	TRANSAXLE, 6SPEED, 4WS, P930-036	1
10	874 78 05-44	SCREW, 5/16-18 X 2.50 HHC	4
11	533 12 03-93	WASHER, FLAT .344 X .69 X .065	12
12	533 04 41-08	NUT, 5/16-18 HWDFLCTRLK	4
13	533 00 14-98	NUT, 5/16-18 REGHEXCTRLK	4
14	874 78 05-44	SCREW, 5/16-18 X 2.50 HHC	4
16	533 30 32-41	BELT, V 4L 90.00 LONG	1
17	533 30 31-09	PULLEY, 6.6 OD V4L T/A	1
18	533 05 07-95	KEY, HI-PRO 606 .75 DIA X .187 WIDE	1
19	533 02 20-53	RING, RETEX .58 X .035 TRU 5100-62	1
22	533 30 87-19	PIVOT, STEERING	1
23	533 01 23-19	BOLT, .562 X .340 HSH 3/8-24	1
26	533 30 41-15	SPACER, STEERING SHAFT	1
27	533 30 87-20	SHAFT, STEERING PIVOT	1
28	533 42 10-51	SCREW, 5/16-24 X 1.00 HHC	1
29	533 04 56-02	WASHER, FLAT .333 X .87 X .119	1
30	533 02 51-77	WASHER, FLAT .765 X 1.19 X .048	3
33-1	533 30 84-47	ROD, TIE 1/2- D X 8.12 LONG	1
33-2	533 30 83-99	NUT, 3/8-24, LH, THD REGHJAM	1
33-3	533 30 83-84	BALLJOINT, LH, 3/8-24	1
33-4	533 12 49-25	NUT, 3/8-24 REGHEXJAM	1
33-5	533 30 42-60	BALL JOINT, RH, 3/8-24	1
34-1	533 30 84-46	ROD, TIE 1/2- D X 9.75 LONG	1
34-2	533 30 83-99	NUT, 3/8-24, LH, THD REGHJAM	1
34-3	533 30 83-84	BALLJOINT, LH, 3/8-24	1
34-4	533 12 49-25	NUT, 3/8-24 REGHEXJAM	1
34-5	533 30 42-60	BALLJOINT, RH, 3/8-24	1
35	533 18 16-46	SCREW, 3/8-24 X 1.75 HHC	1
36	533 41 23-49	NUT, 3/8-24 HXCTRLK	1
51	533 30 41-20	ARREAR WHEEL STEER RH	1
5	533 30 41-21	ARREAR WHEEL STEER LH	1
5	874 61 06-24	SCREW, 3/8-24 X 1.25 HHC	2
54	533 12 03-82	WASHER, REGSPTLK .393 X .68 X .10	2
55	533 41 23-49	NUT, 3/8-24 HXCTRLK	2
56	874 78 06-16	SCREW, 3/8-16 X 1.00 WAHHTAP	4
61	533 32 37-43	U-joint ASSEMBLY, 4WS, LT, DUTY	2
61-1	533 01 22-80	HUASSEMBLY	1
612	533 32 45-78	BEARING, FLSH .752 ID X .937 OD X .75	1
61-3	533 01 22-89	PINSTEERING HINGE	2
61-	533 32 45-78	BEARING, FLSH .752 ID X .937 OD X .75	1
61-5	533 01 23-25	BEARING, BALL 6203-2AA-3/4	2
61-6	533 01 24-65	BRACKET, STEERING PIVOT	1
61-7	533 01 24-66	BRACKET, STEERING PIVOT	1
61-8	533 02 16-82	WASHER, FLAT .765 X 1.25 X .042	1
61-9	533 03 63-11	PIN, GROOVED .250 DIA X 1.50 LONG	1
61-10	533 32 05-31	U-JOINT ASSEMBLY, W/ZERK (LONG)	1
61-12	533 45 67-22	PIN, SPRING .250 DIA X 1.50 LONG	2
62	533 18 00-79	SCREW, 5/16-18 X 1.00 HHC	8
63	533 12 03-93	WASHER, FLAT .344 X .69 X .065	8
64	533 00 14-98	NUT, 5/16-18 REGHEXCTRLK	8
65	533 18 16-83	SCREW, 1/2-20 X .50 HHC	6
71	533 30 32-22	BACRKET X-AXLE MTG, 4WS	2
72	533 03 54-98	SCREW, 5/16-18 X .75 WAHHTAP	4
75	533 30 25-93	ROD, REAR WHEEL STEER, 4WS (930-6)	1
77	33 30 41-16	CAM YOKE ROLLER	1
78	533 30 41-22	BOLT, .625 X 1.175 HSH	1
79	533 27 46-54	NUT, 1/2-20 REGHXCTRLK	1
81	533 30 28-77	ASSEMBLY, SECTOR GEAR, 4WS	1
82	533 30 28-78	BEARING, SLEEVE	1
83	533 18 17-09	SCREW, 1/2-20 X 2.50 HHC	1
84	533 27 46-54	NUT, 1/2-20 REGHXCTRLK	1
91	533 30 25-94	FOLLOWER, ROLLER	1
92	533 30 25-88	BOLT, .265 X .800 HSH 3/8-24	1
93	533 44 63-63	WASHER, FLAT .375 X .88 X .082	1
94	533 41 23-49	NUT, 3/8-24 HXCTRLK	1
96	533 30 25-83	PLATE, PIVOT STEERING EURO	1
97	533 03 54-97	SCREW, 5/16-18 X .50 WAHHTAP	2
98	33 03 54-98	SCREW 5/16-18 X .75 WAHHTAP	2
99	533 00 14-98	NUT, 5/16-18 REGHEXCTRLK	4
100	533 44 63-63	WASHER, FLAT .375 X .88 X .082	2
101	533 30 42-59	TIRE & RIM, 20 X 10.00-8	2
	533 02 41-67	VALVE STEM	2
	533 01 24-67	RIM, WHEEL	2
102	533 30 66-69	CLIP, HUBCAP TINN #C25467-017-4	10
104	533 30 65-70	HUB CAP, 8. EURO	2

* CONTACT YOUR NEAREST TRANSAXLE DEALER FOR PARTS AND SERVICE.



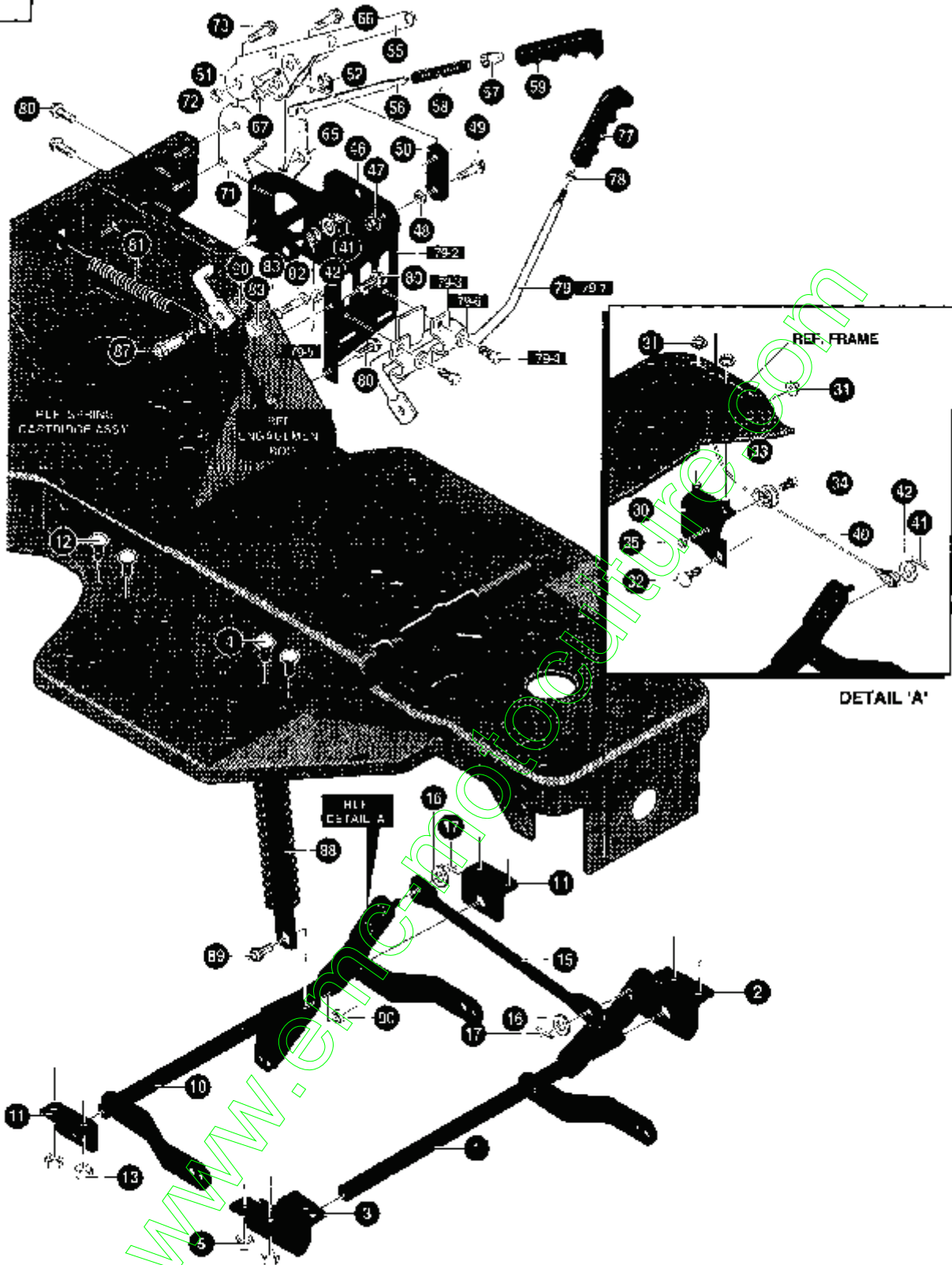
E



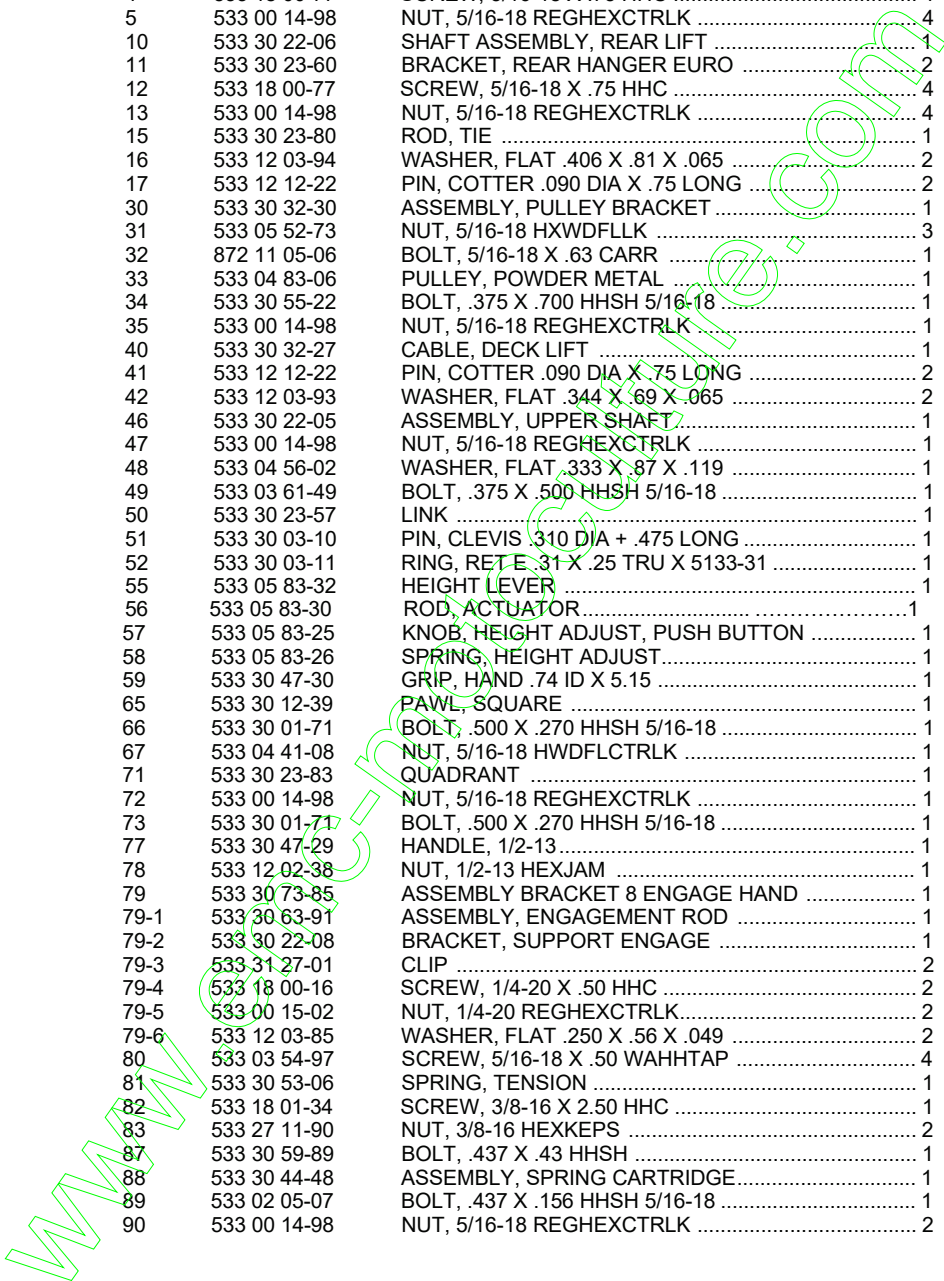


KEY#	PART#	DESCRIPTION	QTY
1	533 32 14-21	TUBE ASSEMBLY, SHIFT, BLACK	1
3	533 30 25-38	CLIP, SHIFT LEVER	2
4	533 03 54-97	SCREW, 5/16-18 X .50 WAHTAP	4
8	533 30 25-82	LEVER, TRANSAXLE SHIFT	1
9	533 05 62-55	SCREW, 1/4-28 X .75 NYLHHC	1
10	533 05 71-57	WASHER, .750 X .250 SP-TRANSAXLE	1
13	533 30 95-46	LINK, TIE ROD, SHIFT 7.812 C/L	1
14	874 78 06-20	SCREW, 3/8-16 X 1.25	2
15	533 12 03-94	WASHER, FLAT .406 X .81 X .065	2
16	533 00 14-99	NUT, 3/8-16 REGHXCTRLK	2
19	533 30 40-49	ARM, IDLER	1
20	533 05 11-89	BOLT, .500 X 1.280 HSH 3/8-16	1
21	533 00 14-99	NUT, 3/8-16 REGHXCTRLK	1
23	53330 42-09	SPRING, CLUTCH	1
26	533 30 41-30	SPRING, BRAKE 1.00 OD X 3.12 X .120	1
27	533 02 50-86	BOLT, .500 X .375 HSH 5/16-18	1
28	533 00 14-98	NUT, 5/16-18 REGHEXCTRLK	1
29	533 30 81-88	WASHER, FLAT .515 X 1.31 X .09	1
32	533 04 02-23	PULLEY, IDLER BFF	1
33	53330 41-05	BELT RETAINER	1
34	533 05 73-25	BOLT, 3/8-16 X 2.00 CARRSN	1
35	533 04 51-71	NUT, 3/8-16 HWDFL WHIZ-LOCK	1
38	533 30 40-83	ROD, SHIFT-ON-THE-GO	1
39	533 12 03-94	WASHER, FLAT .406 X .81 X .065	1
40	533 03 63-68	PIN, HAIR .072 DIA X 1.13 LONG	1
41	533 07 10-46	NUT, 3/8-16 HEXNYL	1
44	533 30 40-25	TUBE ASSEMBLY, SHIFT PIVOT	1
45	533 30 40-86	BOLT, .375 X .400 1/4-20 X .47	1
46	533 00 15-02	NUT, 1/4-20 REGHEXCTRLK	1
48	533 30 53-82	QUADRANT, SHIFT P930-6SPEED, EURO	1
49	533 30 03-02	SCREW, #10 X .50 HHTAPPST	4
50	874 76 04-12	SCREW, 1/4-20 X .75	4
51	533 05 13-35	NUT, 1/4-20 WDFL WHIZ-LK	4
52	533 30 47-28	HANDLE, 3/8-16 MOLDED	1
53	533 12 03-77	NUT, 3/8-16 REGHX	1
56	533 30 23-19	WELD ASSEMBLY, CLUTCH/BRAKE, ARM	1
57	533 30 23-35	PAD, CLUTCH/BRAKE MOLD W/L	1
58	533 31 32-71	BRACKET, CLUTCH/BRAKE ARM	2
59	533 03 54-97	SCREW, 5/16-18 X .50 WAHTAP	2
63	533 30 42-12	ROD, CLUTCH	1
64	533 12 03-92	WASHER, FLAT .281 X .63 X .065	1
65	533 12 12-23	PIN, COTTER .062 DIA X .75 LONG	1
66	533 30 41-25	BRACKET, BRAKE ROD	1
67	533 27 11-84	NUT, 5/16-18 HEXKEPS	1
68	533 00 14-98	NUT, 5/16-18 REGHEXCTRLK	1
71	533 30 42-08	LEVER, PARK BRAKE	1
72	533 00 14-98	NUT, 5/16-18 REGHEXCTRLK	1
73	533 02 50-86	BOLT, .500 X .375 HSH 5/16-18	1
74	533 03 02-89	WASHER, WAVE .50 ID	1
75	533 03 54-10	SPRING, .071 X .62 X 4.37	1
78	533 30 42-17	ROD, PARKING BRAKE	1
79	533 30 43-67	KNOB, PARK BRAKE, BLACK	1
80	533 12 03-85	WASHER, FLAT .250 X .56 X .049	2
81	533 12 12-23	PIN, COTTER .062 DIA X .75 LONG	1
84	533 31 01-62	GUIDE, BELT 820 TRANSAXLE	1
85	533 00 14-98	NUT, 5/16-18 REGHEXCTRLK	2

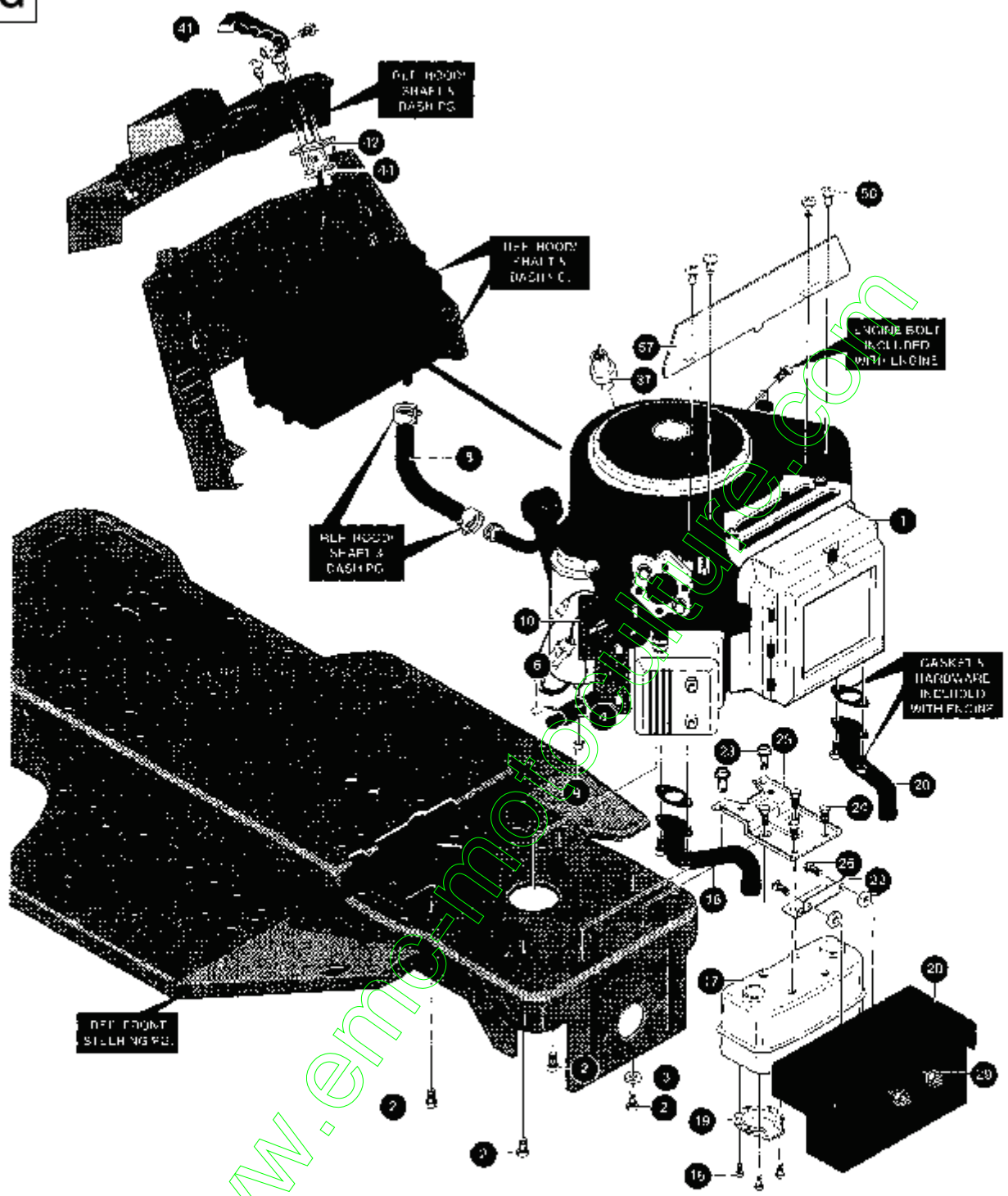
F



KEY #	PART#	DESCRIPTION	QTY
1	533 30 23-79	SHAFT, ASSEMBLY, FRONT LIFT, EURO	1
2	533 30 49-67	BRACKET, FRONT HANGER, RH	1
3	533 30 23-38	BRACKET, FRONT HANGER, LH	1
4	533 18 00-77	SCREW, 5/16-18 X .75 HHC	4
5	533 00 14-98	NUT, 5/16-18 REGHEXCTRLK	4
10	533 30 22-06	SHAFT ASSEMBLY, REAR LIFT	1
11	533 30 23-60	BRACKET, REAR HANGER EURO	2
12	533 18 00-77	SCREW, 5/16-18 X .75 HHC	4
13	533 00 14-98	NUT, 5/16-18 REGHEXCTRLK	4
15	533 30 23-80	ROD, TIE	1
16	533 12 03-94	WASHER, FLAT .406 X .81 X .065	2
17	533 12 12-22	PIN, COTTER .090 DIA X .75 LONG	2
30	533 30 32-30	ASSEMBLY, PULLEY BRACKET	1
31	533 05 52-73	NUT, 5/16-18 HXWDFLLK	3
32	872 11 05-06	BOLT, 5/16-18 X .63 CARR	1
33	533 04 83-06	PULLEY, POWDER METAL	1
34	533 30 55-22	BOLT, .375 X .700 HSH 5/16-18	1
35	533 00 14-98	NUT, 5/16-18 REGHEXCTRLK	1
40	533 30 32-27	CABLE, DECK LIFT	1
41	533 12 12-22	PIN, COTTER .090 DIA X .75 LONG	2
42	533 12 03-93	WASHER, FLAT .344 X .69 X .065	2
46	533 30 22-05	ASSEMBLY, UPPER SHAFT	1
47	533 00 14-98	NUT, 5/16-18 REGHEXCTRLK	1
48	533 04 56-02	WASHER, FLAT .333 X .87 X .119	1
49	533 03 61-49	BOLT, .375 X .500 HSH 5/16-18	1
50	533 30 23-57	LINK	1
51	533 30 03-10	PIN, CLEVIS .310 DIA + .475 LONG	1
52	533 30 03-11	RING, RETE .31 X .25 TRU X 5133-31	1
55	533 05 83-32	HEIGHT LEVER	1
56	533 05 83-30	ROD, ACTUATOR	1
57	533 05 83-25	KNOB, HEIGHT ADJUST, PUSH BUTTON	1
58	533 05 83-26	SPRING, HEIGHT ADJUST	1
59	533 30 47-30	GRIP, HAND .74 ID X 5.15	1
65	533 30 12-39	PAWL, SQUARE	1
66	533 30 01-71	BOLT, .500 X .270 HSH 5/16-18	1
67	533 04 41-08	NUT, 5/16-18 HWDFLCTRLK	1
71	533 30 23-83	QUADRANT	1
72	533 00 14-98	NUT, 5/16-18 REGHEXCTRLK	1
73	533 30 01-71	BOLT, .500 X .270 HSH 5/16-18	1
77	533 30 47-29	HANDLE, 1/2-13	1
78	533 12 02-38	NUT, 1/2-13 HEXJAM	1
79	533 30 73-85	ASSEMBLY BRACKET 8 ENGAGE HAND	1
79-1	533 30 63-91	ASSEMBLY, ENGAGEMENT ROD	1
79-2	533 30 22-08	BRACKET, SUPPORT ENGAGE	1
79-3	533 31 27-01	CLIP	2
79-4	533 18 00-16	SCREW, 1/4-20 X .50 HHC	2
79-5	533 00 15-02	NUT, 1/4-20 REGHEXCTRLK	2
79-6	533 12 03-85	WASHER, FLAT .250 X .56 X .049	2
80	533 03 54-97	SCREW, 5/16-18 X .50 WAHTAP	4
81	533 30 53-06	SPRING, TENSION	1
82	533 18 01-34	SCREW, 3/8-16 X 2.50 HHC	1
83	533 27 11-90	NUT, 3/8-16 HEXKEPS	2
87	533 30 59-89	BOLT, .437 X .43 HSH	1
88	533 30 44-48	ASSEMBLY, SPRING CARTRIDGE	1
89	533 02 05-07	BOLT, .437 X .156 HSH 5/16-18	1
90	533 00 14-98	NUT, 5/16-18 REGHEXCTRLK	2



G



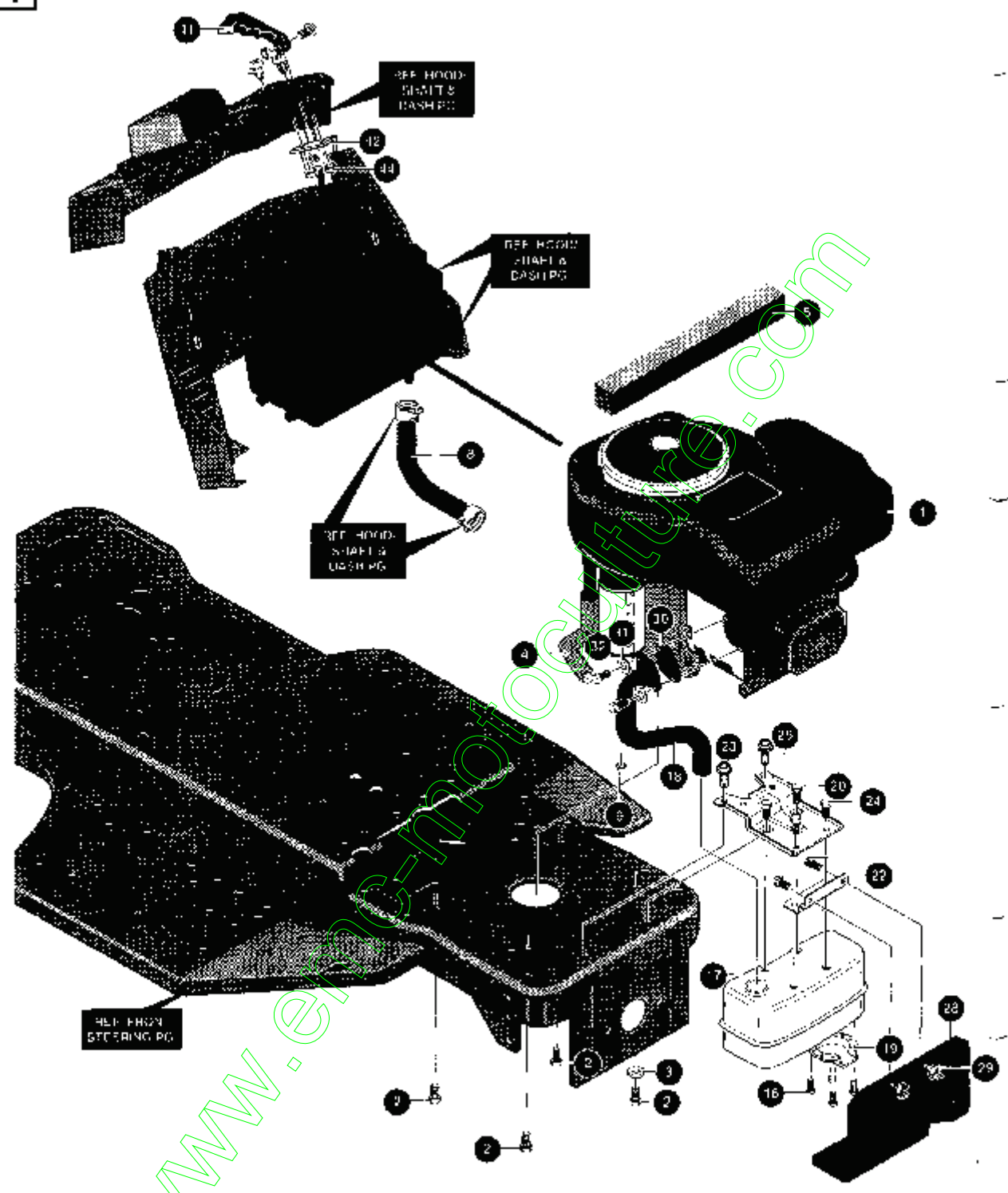


LT 4140 G

KEY #	PART #	DESCRIPTION	QTY.
1	ENGINE	14-16HP, VANGUARD (SEE ENGINE MANUAL)	1
2	533 05 09-47	SCREW, 3/8-16 X 1.25 WAHHTAPBLKP	4
3	533 13 84-89	WASHER, EXLK .384 X .69 X .04	1
4	533 30 71-74	NIPPLE, 3/8-18 NPT X 4~	1
6	533 04 78-28	CAP, PIPE 3/8-18 NPT	1
8	506 66 42-01	TUBING, .25 X .50 X BULK GAS LINE	10 IN.
9	533 12 48-18	NUT, 1/4-20 REGHXJAM	1
10	533 31 55-99	REGULATOR, VOLTAGE, B&S, W/O SENSOR	1
16	533 03 52-87	SCREW, #8-32 X .38 HHWATAP	4
17	533.30 55-53	MUFFLER, 14/18HP, TWIN NLSN 22785C	1
18	533 30 55-54	EXHAUST TUBE, 15HP, RH, BBS, VANG	1
19	533 05 64-72	DEFLECTOR SIDE OUT (BS222573)	1
20	533 30 55-55	EXHAUST TUBE, 15HP, LH, B&S, VANG	1
22	533 00 97-96	BRACKET, TRANSAXLE	1
23	533 03 54-97	SCREW, 5/16-18 X .50 WAHHTAP	2
24	533 04 48-11	SCREW, 1/4-20 X .75 WAHHTAP	4
26	872 11 05-06	BOLT, 5/16-18 X .63 CARRLN	2
28	533 32 09-22	SHIELD, MUFFLER HEAT TWIN	1
29	533 05 52-73	NUT, 5/16-18 HXWDFLLK	2
31	533 31 47-97	OIL SENSOR, B&S TWIN CYLINDER	1
41	533 30 44-39	KNOB, THROTTLE CTL MOLD	1
42	533 30 73-62	THROTTLE CONTROL, EURO 18, TWIN	1
44	533 30 84-59	NUT, #10-24 HXHDNYLK	2
57	533 32 13-06	HEAT SHIELD, V/G LT EURO	1

www.emc-motoculture.com

H



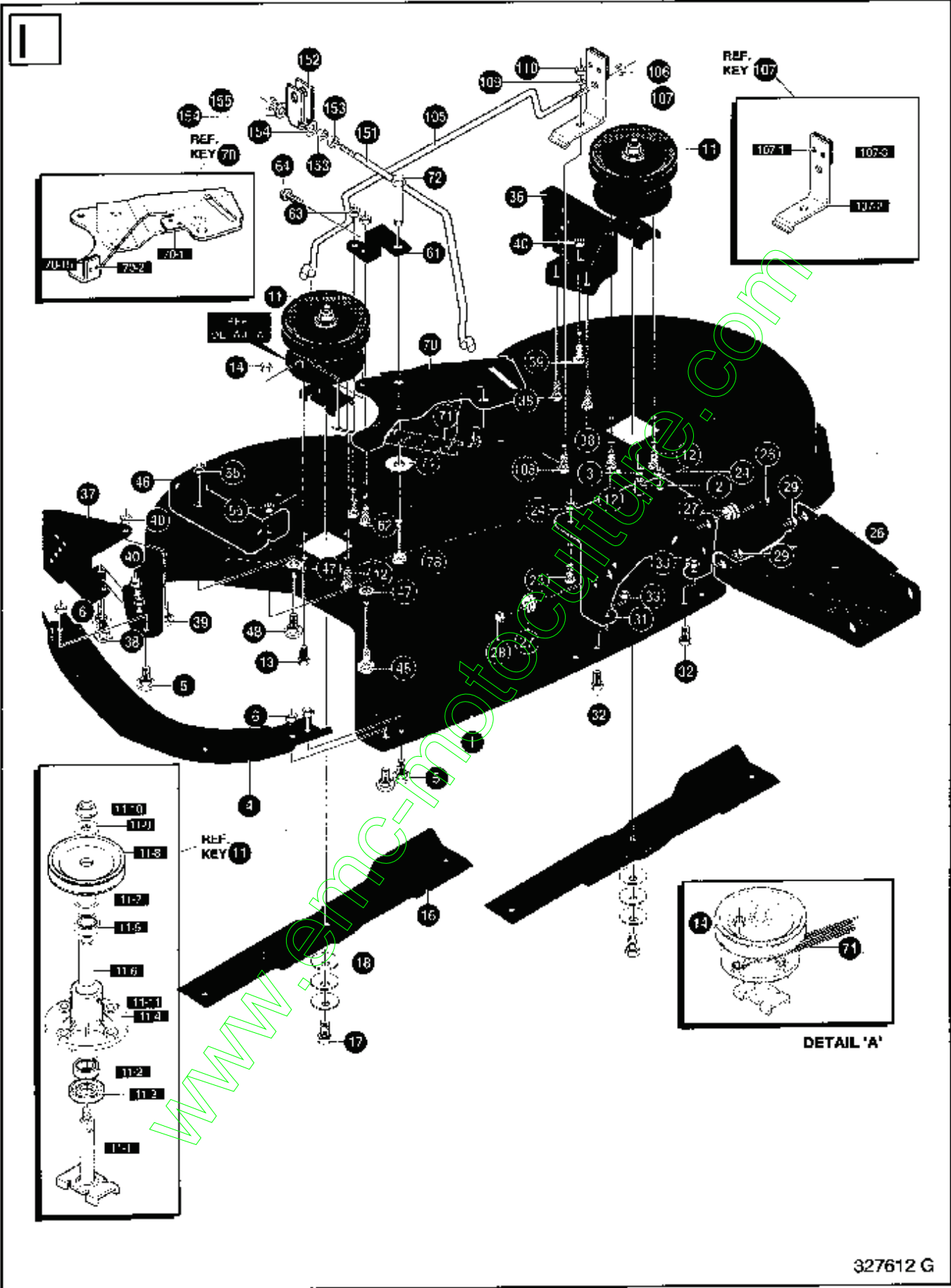
www.einc-motoculture.com

LI 4130 G

KEY#	PART#	DESCRIPTION	QTY
1	*	ENGINE, 13.0HP, B&S, VANGARD SINGLE	1
2	533 05 09-47	SCREW, 3/8-16 X 1.25 WAHTAP, BLACK	4
3	533 13 84-89	WASHER, EXLK .384X .69 X .04	1
4	533 11 13-16	ELBOW, 90° STREET 3/8 TPT	1
5	533 30 81-15	FOAM, HOOD BAFFLE	1
8	506 66 42-01	TUBING, .25 X .50 X BULK GAS LINE	13.5"
16	533 03 52-87	SCREW, #8-32 X .38 HHWATAP	4
17	533 32 63-24	MUFFLER, 12/14HP, LOW BACK FIRE	1
18	533 33 24-08	TUBE, MUFFLER EXHAUST, B8S-OHV SINGLE	1
19	533 05 64-72	DEFLECTOR SIDE OUT (BS222573)	1
20	533 99 53-46	SCREW, 1/4-20 X .50 WAHTAP	2
22	533 00 97-96	BRACKET, TRANSAXLE	1
23	533 03 54-97	SCREW, 5/16-18 X .50 WAHTAP	2
24	533 04 48-11	SCREW, 1/4-20 X .75 WAHTAP	2
25	533 30 47-09	BRACKET, MUFFLER	1
26	872 11 05-06	BOLT, 5/16-18 X .63 CARLN	2
28	533 33 24-21	HEAT SHIELD, FRONT IF/EURO	1
29	533 05 52-73	NUT, 5/16-18 WDFLLKLRG WHIZ	2
30	533 04 67-08	GASKET, MUFFLER	1
31	533 12 06-38	WASHER, HVSPTLK-.328 X .60 X .09	2
32	533 18 00-77	SCREW, 5/16-18 X .75 HHC	2
41	533 30 44-39	KNOB, THROTTLE CONTROL	1
42	533 31 57-16	THROTTLE CONTROL, 17.0~ CHKOMA	1
43			
44	533 30 84-59	NUT, #10-24 HXHDNYLK	2

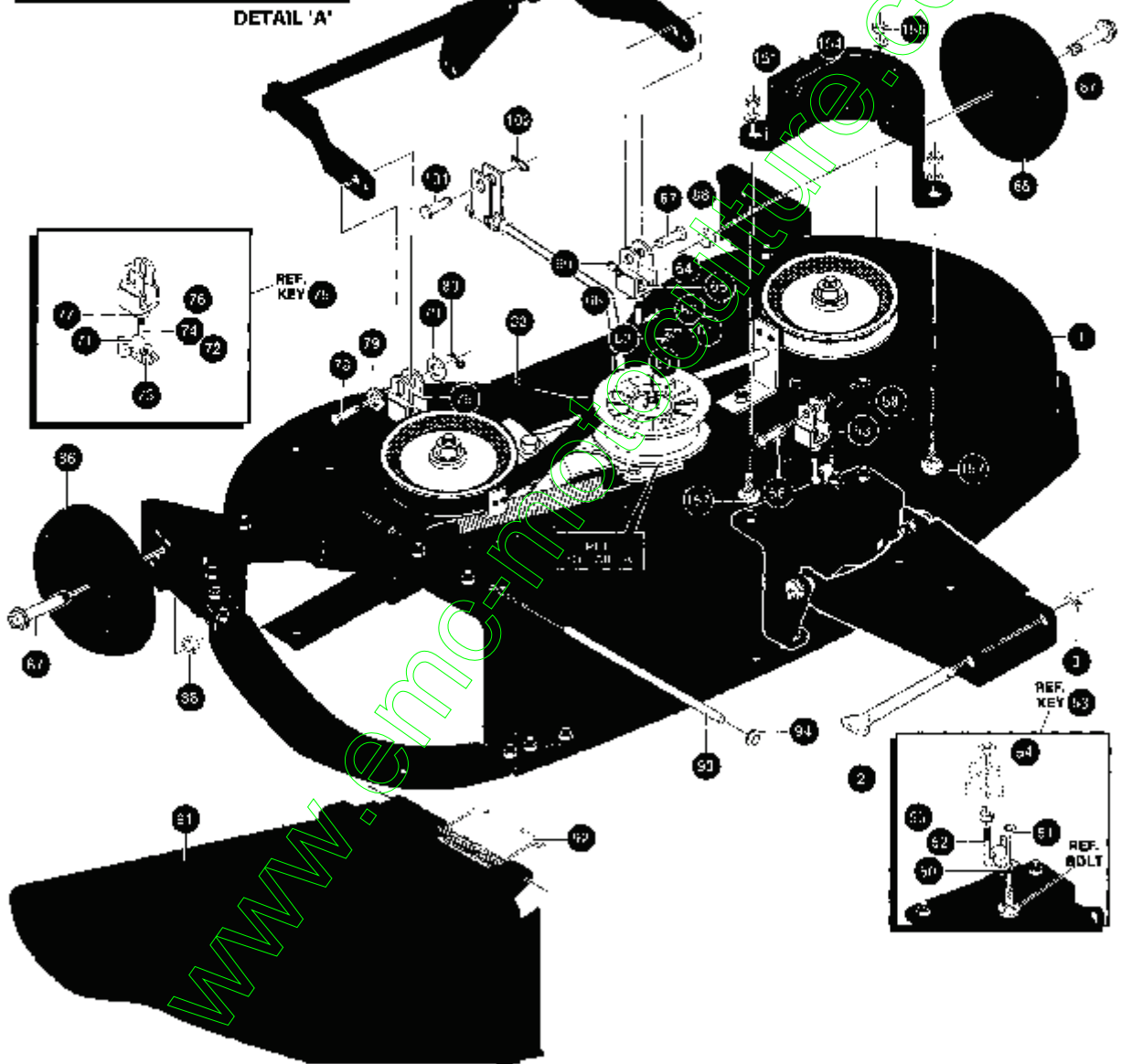
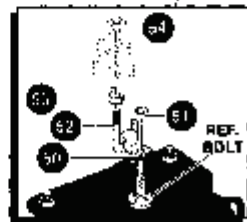
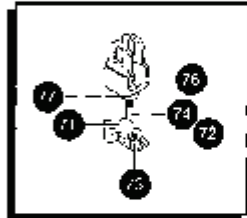
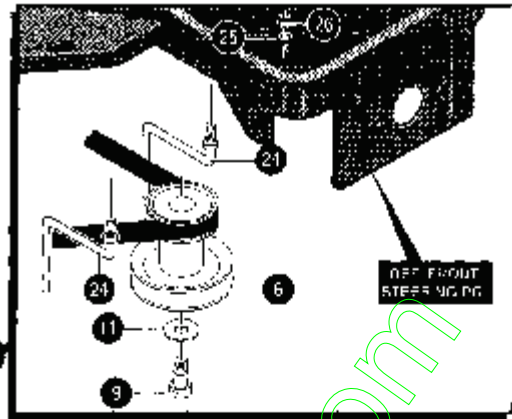
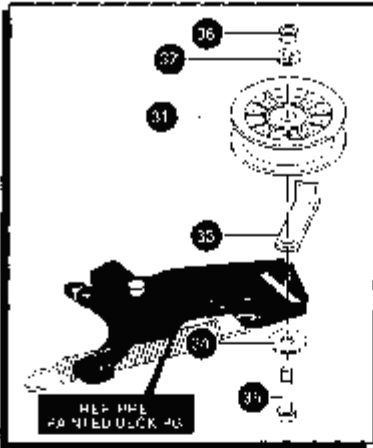
* SEE ENGINE MANUAL

www.emc-motors.com



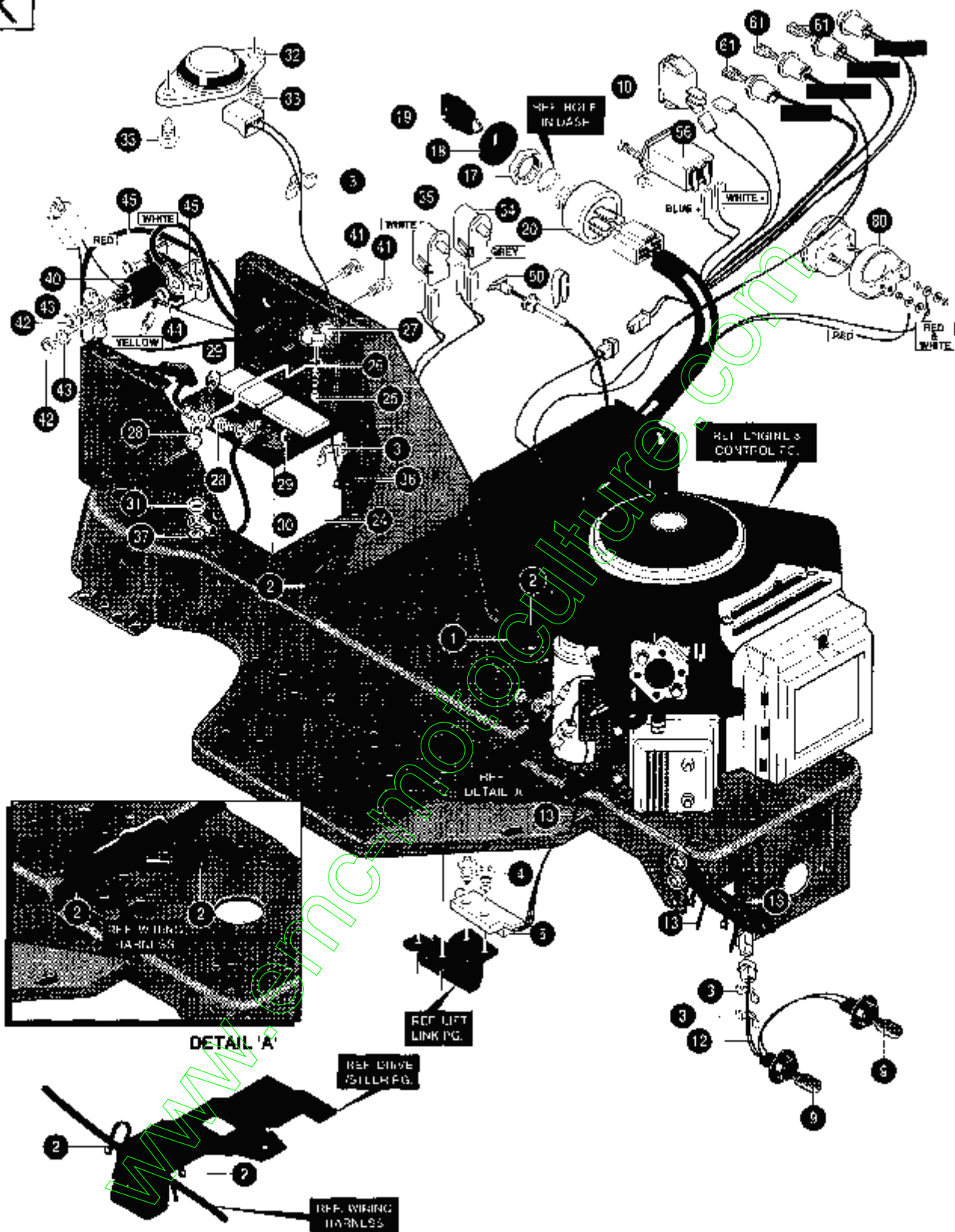
KEY #	PART #	DESCRIPTION	QTY
1	533 32 51-03	40~ DECK KIT	1
2	533 18 00-77	SCREW, 5/16-18 X .75 HHC	1
3	533 00 14-98	NUT, 5/16-18 REGHEXCTRLK	1
4	533 32 64-80	TOE GUARD - MULCHER	1
5	872 11 05-06	BOLT, 5/16-18 X .63 CARR	3
6	533 00 14-98	NUT, 5/16-18 REGHEXCTRLK	3
11	533 31 77-05	QUILL, 36139140143, W/ZERKS	2
11-1	533 05 64-25	SHAFT/SADDLE 36	1
11-2	738 22 03-19	BEARING, BALL 6203-A-C3 (SEAL)	1
11-3	533 05 06-16	DUST SHIELD	1
11-4	533 05 07-02	QUILL HOUSING, EXP	1
11-5	533 04 95-62	BEARINGG, BALL 6203-2AA (SEALS)-C3	1
11-6	533 05 08-18	SPACER, SLEEVE .669 X .88 X 3.797	1
11-7	533 05 14-49	SPACER, SLEEVE .672 X .93 X .438	1
11-8	533 31 38-98	PULLEY, 26/36~ QUILL V5L	1
11-9	533 05 63-65	WASHER, SPECIALQUILL	1
11-10	533 00 12-82	NUT, 7/16-20 WDFLLK	1
11-11	533 00 07-06	ZERK, GREASE FITTING	1
12	533 03 54-98	SCREW, 5/16-18 X .75 WAHHTAP	7
13	533 30 03-45	SCREW, 5/16-18 X 1.38 WAHHTAP	1
14	533 00 14-98	NUT, 5/16-18 REGHEXCTRLK	1
16	533 31 33-16	BLADE, 40. STD-LIFT 20.32	2
17	533 03 95-73	SCREW, 3/8-24 X 1.00 NYLHHC	2
18	533 00 24-83	WASHER, .39 ID X 1.25 D X .07 BELLVIL	6
23	872 11 05-06	BOLT, 5/16-18 X .63 CARR	2
24	533 00 14-98	NUT, 5/16-18 REGHEXCTRLK	2
26	533 31 08-00	CHANNEL DRAWBAR, 40, EURO	1
27	533 05 82-47	NUT, ADJUST	2
28	533 18 00-79	SCREW, 5/16-18 X 1.00 HHC	2
29	533 00 14-98	NUT, 5/16-18 REGHEXCTRLK	2
31	533 31 23-42	BRACKET, FRONT	1
32	533 18 00-77	SCREW, 5/16-18 X .75 HHC	2
33	533 00 14-98	NUT, 5/16-18 REGHEXCTRLK	2
36	533 31 70-41	BRACKET, GAGE WHEEL, LH	1
37	533 31 70-18	BRACKET, GUAGE WHEEL, RH	1
38	533 18 00-77	SCREW, 5/16-18 X .75 HHC	4
39	872 11 05-06	BOLT, 5/16-18 X .63 CARR	2
40	533 00 14-98	NUT, 5/16-18 REGHEXCTRLK	6
46	533 31 70-17	BRACKET, CHUTE MOUNT	1
47	734 11 52-01	WASHER, FLAT .469 X .92 X .065	2
48	872 11 05-06	BOLT, 5/16-18 X .63 CARR	2
55	533 00 14-98	NUT, 5/16-18 REGHEXCTRLK	2
61	533 32 68-93	BRACE, IDLER SUPPORT 40~, 43~	1
62	533 18 00-77	SCREW, 5/16-18 X .75 HHC	2
63	533 04 41-08	NUT, 5/16-18 HWDFLCTRLK	2
70-1	533 32 21-16	ARM, IDLER 40/43" DECK	1
70-2	533 04 16-01	RIVET, OVSET .187 DIA X .50 LONG	2
70-3	533 30 69-73	BRAKE PAD - HARD - 232 AF	1
71	533 03 54-10	SPRING, .071 X .62 X 4.37	1
72	533 30 44-20	BOLT, .500 X 2.15 HHSH	1
74	734 11 78-01	WASHER, FLAT .391 X 1.00 X .209	1
78	873 22 06-00	NUT, 3/8-16 HWDFLK MACK	1
105	533 30 27-14	ROD, BRAKE	1
106	533 00 15-02	NUT, 1/4-20 REGHEXCTRLK	1
107-1	533 13 56-24	RIVET, TRSET .185 DIA X .41 LONG	2
107-2	533 30 41-19	BRAKE ARM	1
107-3	533 30 69-73	BRAKE PAD - HARD - 232 AF	1
108	533 18 00-77	SCREW, 5/16-18 X .75 HHC	1
109	533 12 03-93	WASHER, FLAT .344 X .69 X .065	1
110	533 00 14-98	NUT, 5/16-18 REGHEXCTRLK	1
151	533 30 30-72	ROD, CLUTCH	1
152	533 30 52-84	CLEVIS, EURO	1
153	533 12 03-76	NUT, 5/16-18 REGHEX	2
154	533 12 03-93	WASHER, FLAT .344 X .69 X .065	2
155	533 00 14-98	NUT, 5/16-18 REGHEXCTRLK	1
156	533 05 74-44	TIE, CABLE BLACK NYLON 5.62 LONG	1

J



KEY #	PART #	DESCRIPTION	QTY
1	533 32 51-03	MOWER DECK 40. KIT	1
2	533 30 29-63	ROD, DRAWBAR	1
3	533 00 82-60	PIN, HAIR .091 DIA X 1.66 LONG	1
6	533 32 80-27	PULLEY, ENGINE ASSY	1
9	533 21 56-49	SCREW, 7/16-20X5.50 HHC	1
11	533 12 03-83	WASHER, REGSPTLK.459X.78X.12	1
24	533 30 04-40	GUIDE, BELT, RIDER	2
25	533 13 85-38	WASHER, REGINTLK .320 X .61 X .03	2
26	533 00 14-98	NUT, 5/16-18 REGHEXCTRLK	2
31	533 31 03-26	PULLEY, IDLER BFF 4.00 WIDE FL	1
32	533 04 80-44	BELT, V 5L 82.00 DECK, DR	1
33	533 00 13-46	RETAINER, BELT	1
34	533 44 63-63	WASHER, FLAT .375 X .88 X .082	1
35	533 05 73-25	BOLT, 3/8-16 X 2.00 CARR	1
36	533 12 03-77	NUT, 3/8-16 REGHEX	1
37	533 12 03-82	WASHER, REGSPTLK .393 X .68 X .10	1
50	533 31 98-68	CLIP, 40/46" HANGER	1
51	533 00 14-98	NUT, 5/16-18 REGHEXCTRLK	1
52	533 30 96-15	ROD, 40~, REAR DECK LIFT	1
53	533 30 44-43	CLEVIS	1
54	533 10 95-27	NUT, 1/2-13 .458 SQUARE	1
55	533 12 02-38	NUT, 1/2-13 HEXJAM	1
56	533 30 03-17	PIN, CLEVIS .375 DIA X .81 LONG	1
57	533 12 03-94	WASHER, FLAT .406 X .81 X .065	1
58	533 00 82-60	PIN, HAIR .091 DIA X 1.66 LONG	1
60	533 31 98-68	CLIP, 40/46 HANGER	1
61	872 11 05-06	BOLT, 5/16-18 X .75 CARR	1
62	533 00 14-98	NUT, 5/16-18 REGHEXCTRLK	1
63	533 31 23-02	ROD, 40., REAR DECK LIFT	1
64	533 30 44-43	CLEVIS	1
65	533 10 95-27	NUT, 1/2-13 .458 SQUARE	1
66	533 12 02-38	NUT, 1/2-13 HEXJAM	1
67	533 30 03-17	PIN, CLEVIS .375 DIA X .81 LONG	1
68	533 12 03-94	WASHER, FLAT .406 X .81 X .065	1
69	533 00 82-60	PIN, HAIR .091 DIA X 1.66 LONG	1
71	533 31 98-68	CLIP, 40/46~, HANGER	1
72	533 18 00-77	SCREW, 5/16-18 X .75 HHC	1
73	533 00 14-98	NUT, 5/16-18 REGHEXCTRLK	1
74	533 30 96-15	ROD, 40n, REAR DECK LIFT	1
75	533 30 52-83	CLEVIS, SLOT EURO	1
76	533 10 95-27	NUT, 1/2-13 .458 SQUARE	1
77	533 12 02-38	NUT, 1/2-13 HEXJAM	1
78	533 30 03-17	PIN, CLEVIS .375 DIA X .81 LONG	1
79	533 12 03-94	WASHER, FLAT .406 X .81 X .065	1
80	533 00 82-60	PIN, HAIR .091 DIA X 1.66 LONG	1
86	533 30 26-11	GAUGE WHEEL, EURO, 6.00 OD X 1.38 WIDE	2
87	533 02 37-63	BOLT, .500 X 1.390 HSSH 3/8-16	2
88	533 00 14-99	NUT, 3/8-16 REGHXCTRLK	2
91	533 30 44-22	CHUTE DEFLECTOR, 40., 42" & 43~	1
92	533 31 49-75	SPRING, TORSION, CHUTE DEFLECTOR	1
93	533 30 44-24	ROD, PIVOT DECK .312 D X 7.25	1
94	533 00 35-35	NUT, PUSH ON CAP .312 OD	1
101	533 04 93-32	PIN, CLEVIS .375 D X .81 LONG	1
102	533 00 82-60	PIN, HAIR .091 DIA X 1.66 LONG	1
151	533 32 82-57	GUARD, BELT LH, PLASTIC	1
152	533 18 00-77	SCREW, 5/16-18 X .75 HHC	1
154	533 12 03-93	WASHER, FLAT .344 X .69 X .065	3
156	533 00 14-98	NUT, 5/16-18 REGHEXCTRLK	3
157	872 11 05-06	BOLT, 5/16-18 X .63 CARR	2

K

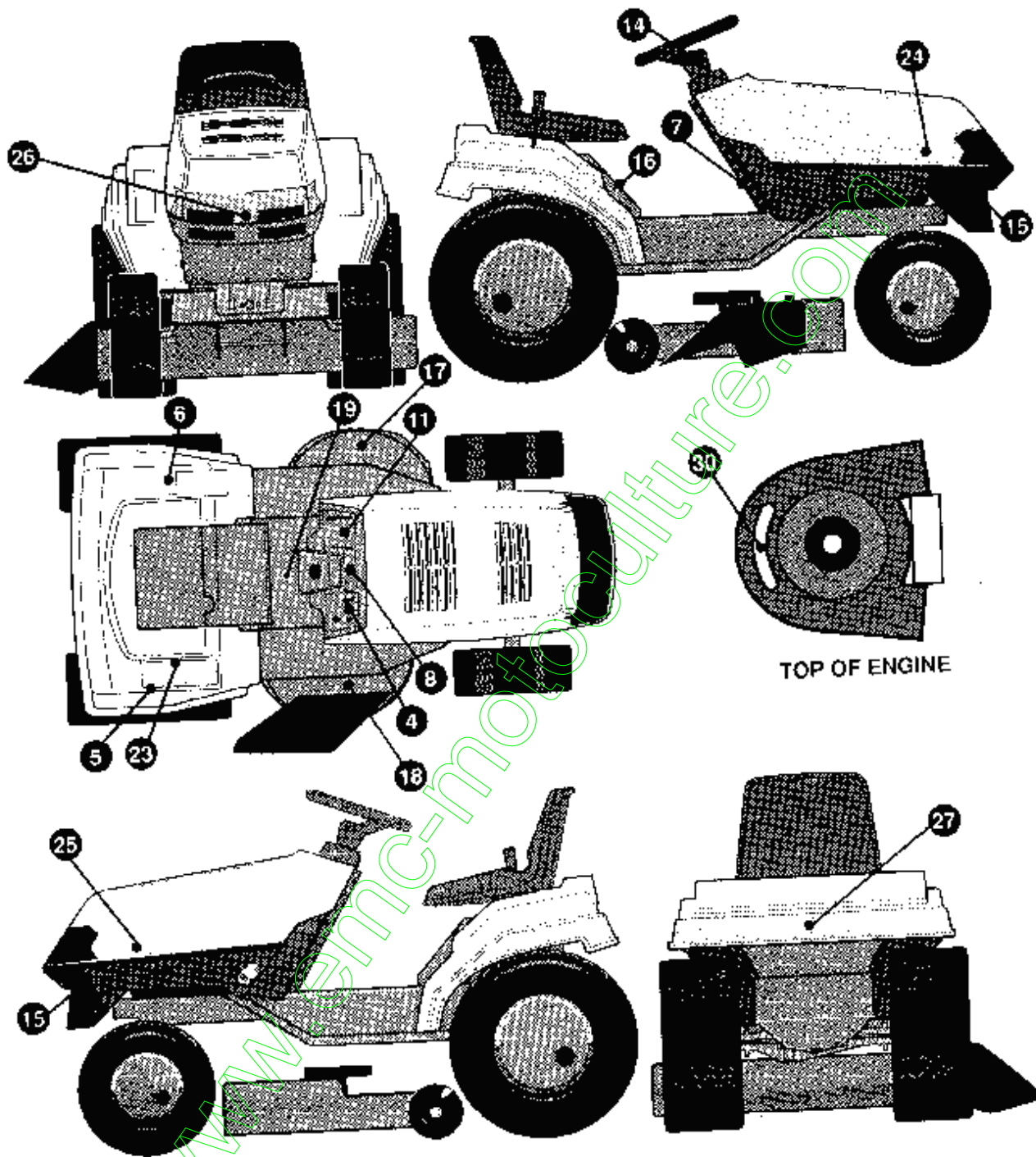




KEY #	PART #	DESCRIPTION	QTY.
1	533 33 19-30	HARNESS WIRING EURO B&S VTWIN	1
2	533 05 74-44	TIES CABLE BLACK NYLON 5~62 LONG	6
3	533 04 14-82	PRESS CLIP 1~380 LONG ~255 IDS	3
4	533 05 72-20	SCREW #12 X ~50 PHPNHTAP BLACK	2
5	533 05 74-76	SWITCH SCREW MOUNT DP~ NC NO BLK	1
9	533 05 25-72	BULB HEADLAMP	2
10	533 30 03-34	LIGHT SWITCH ON/OFF PANEL MOUNT	1
12	533 30 30-64	ASSEMBLY LIGHT WIRE-1/4 TURN	1
13	533 05 74-44	TIES CABLE BLACK NYLON 5~62 LONG	3
17	533 32 73-52	NUT 5/8-8 ACME DELTA FOR BOOT	1
18	533 30 01-94	BOOT IGNITION SWITCH	1
19	533 32 73-50	KEY IGNITION DELTA	2
20	533 32 73-55	SWITCH-IGNITION (AFTER FIRE) 3 POSITION	1
24	506 78 88-01	BATTERY, 8 PLATE MAINTENANCE FREE	1
25	533 05 75-51	ROD BATTERY	1
26	533 30 29-12	RODBATTERYTOP~209 DIA	1
27	533 32 52-32	NUT WING 1/4-20NYLON	1
28	874 76 04-12	SCREW 1/4-20 X ~75 HHC	2
29	533 27 11-72	NUT 1/4-20 REGHEXKEPS	2
30	533 05 55-11	WIRE GROUND 12~5~E	1
31	533 27 11-84	NUT 5/16-18 HEXKEPS	1
32	533 05 75-47	SWITCH, SEAT	1
33	506 55 80-01	SCREW 1/4-20 X ~38 PHPNHMA	2
34	533 32 66-54	SWITCH SNAP MNT NC ~140 BLUE	1
35	533 32 66-53	SWITCH SNAP MNT NO ~055/~116 GRAY	1
36	533 05 74-44	TIES CABLE BLACK NYLON 5~62 LONG	2
37	533 13 84-89	WASHER EXLK 384X69X 04	1
40	533 05 37-16	SOLENOID	1
41	533 18 77-45	SCREW 1/4-20 X ~75 HXSEMMA	2
42	533 12 03-68	NUT 5/16-24 REGHEX	2
43	533 13 84-85	WASHER EXLK ~320 X ~61 X 03	2
44	533 27 11-72	NUT 1/4-20 REGHEXKEPS	1
45	533 00 15-02	NUT 1/4-20 REGHEXCTRLK	2
50	533 30 71-13	CHOKE CONTROL B&S~ TWIN EURO LONG	1
56	506 89 15-01	MINIATURE HOUR METER 4-40V DC	1
61	533 05 77-69	BULB INDICATOR	3
80	533 31 59-02	AMMETER ASSEMBLY	1

www.emc-1.com
www.emc-1.com
www.emc-1.com

L

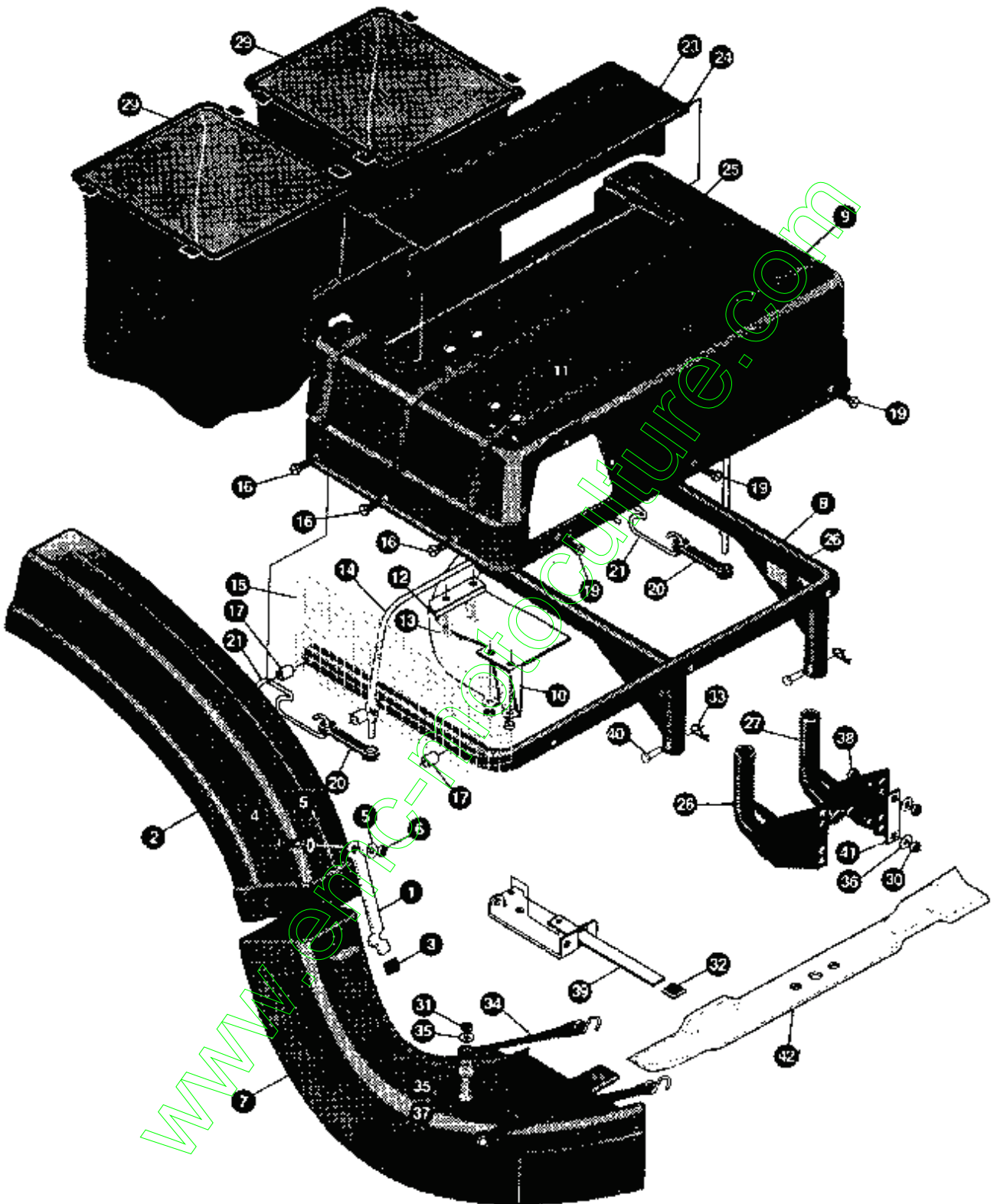




KEY #	PART #	DESCRIPTION	QTY:
4	533 33 18-17	DECAL, DASH RH ISO CH, HR, LS, IS	1
5	533 30 78-17	DECAL, SHIFT INDICATOR EXPORT	1
6	533 31 68-51	DECAL, EXPORT BL.CL. ~ DECK HT	1
7	533 30 78-20	DECAL PARK BRAKE EXPORT	1
8	533 33 20-96	DECAL DASH, OIL, FUEL, ASG, NO CHG	1
11	533 33 18-07	DECAL, DASH, LH, ISO, AMM, M/CL, M/CH	1
14	533 33 20-58	DECAL, GUNSIGHT CENT. 3 SPOKE	1
15	533 31 17-30	DECAL, WHEEL 4 STEER HUSQ. BUM	2
16	533 31 17-31	DECAL, LAWNTRACTOR, SEAT SUPPORT	1
17	533 40 27-00	DECAL CAUTION DECK LH	1
18	533 40 27-01	DECAL CAUTION DECK RH	1
19	533 40 26-89	DECAL, CONSOLE SYMBOLIC CAUTION	1
20	533 32 08-45	DECAL, ENTER & EXIT 11/LANG	1
23	533 31 68-86	DECAL, GEAR SHIFT 6 SPEED EURO	1
24	533 32 21-72	DECAL, HOOD HUSQVARNA, RH	1
25	533 32 21-73	DECAL, HOOD HUSQVARNA, LH	1
26	533 32 21-74	DECAL GRILLE, HUSQVARNA	1
27	533 32 21-75	DECAL REAR FENDER, HUSQVARNA	1

www.emc-motoculture.com

M

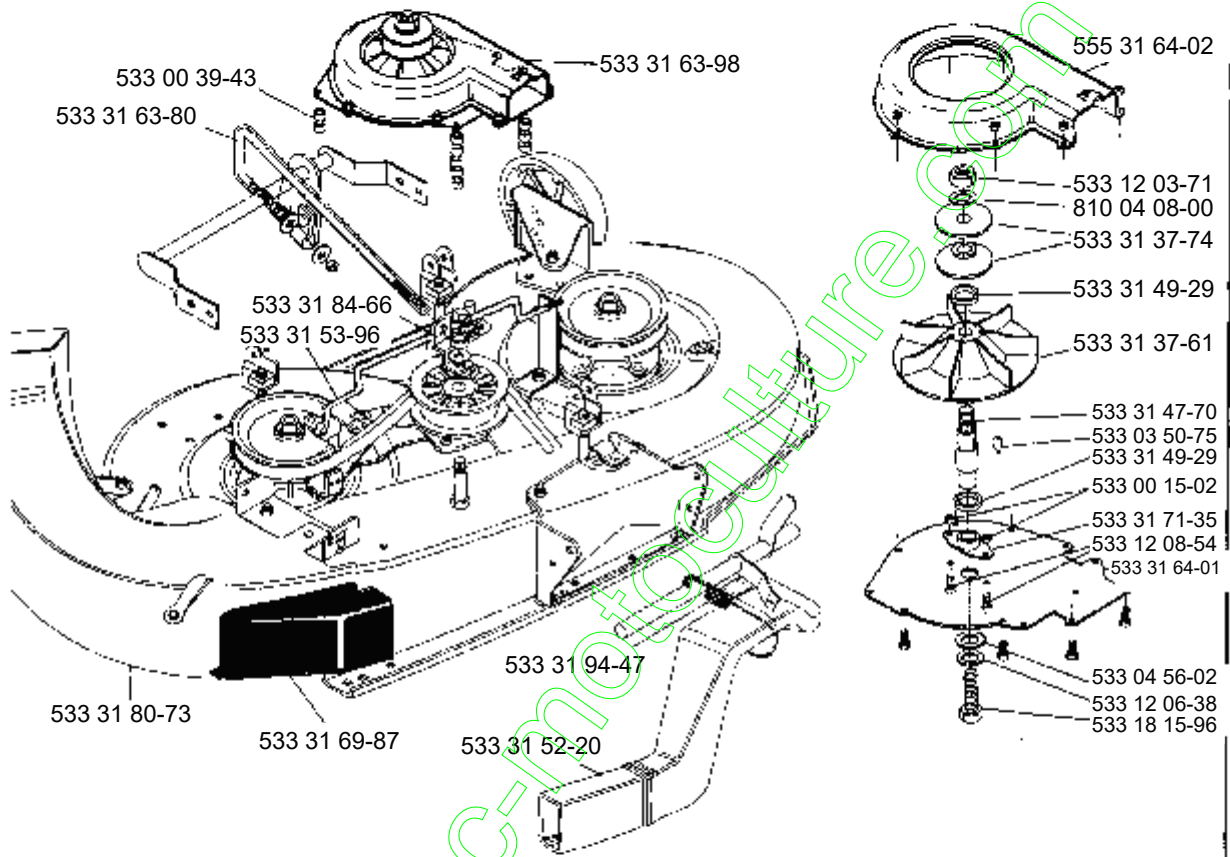




KEY #	PART #	DESCRIPTION	QTY.
1	533 32 24-94	LATCH CHUTE	1
2	533 32 24-95	CHUTE, UPPER 40&46 BAGGER	1
3	533 04 23-48	GRIP-LEVER GRASS COLLECTOR	1
4	533 12 18-87	SCREW 1/4-20X .75 HHC GR2	1
5	734 11 52-01	WASHER, FLAT .28X1.25X.06	2
6	533 00 15-02	NUT, 1/4 REGHEXCTRLK	1
7	533 31 80-73	CHUTE, LOWER 40~/43~ DECK, MOD	1
8	533 32 29-80	WP TUBE ASSY, SUPPORT (DBL-GST)	1
9	533 30 92-95	TOP COVER ERO BAGGER	1
10	533 30 51-97	BAFFLE GRASS CATCHER EURO	1
11	533 05 56-86	SCREW 1/4-20X .63 SLTRMA BLK	4
12	533 12 03-92	WASHER, FLAT .281X .63X0.65	4
13	533 27 11-72	NUT, 1/4-20 REGHXEXKEPS	4
14	533 30 91-59	MP SUPPORT ROD, COVER	1
15	533 30 62-62	SCREEN ERO BAGGER 6.0X 18.25	1
16	533 30 64-87	SPACER, 1/4-20X1.50 HHTAP GR5	3
17	533 30 60-79	SPACER, BAGGER .87X7/16X.060	2
19	533 04 48-11	SCREW 1/4-20X .75 HXWATAP	6
20	533 05 75-05	RUBBER STRAP	2
21	533 30 96-48	HOLD DOWN,RUBBER STRAP	2
23	533 30 93-20	TOPP LID PIVOTING	1
24	533 31 01-94	ROD, GRASS CATCHER PIVOT 953	1
25	533 12 12-23	PIN, COTTER .0625X.75LG	2
27	533 32 35-55	ASSY GRASS CATCHER MT.LH.	1
28	533 32 35-56	ASSY GRASS CATCHER MT.RH	1
29	533 32 21-57	BAG, GRASS CATCHER ERC (LONG)	2
30	533 00 14-98	NUT 5/16-18 REGHEXCTRLK	4
31	533 00 15-02	NUT 1/4-20 REGHEXCTRLK	2
32	533 04 23-48	GRIP-LEVER GRASS COLLECTOR	1
33	533 05 61-80	PIN, HAI R .091 DIAX1.62LG	2
34	533 05 75-05	RUBBER STRAP	2
35	533 12 03-92	WASHER, FLAT .281X .63X.065	4
36	533 12 03-93	WASHER, FLAT .344X .69X.065	4
37	533 12 19-00	SCREW, 1/4-20X1.00 HHC GR2	2
38	874 78 05-16	SCREW, 5/16-18X1.00 HHC BG8	5
39	533 32 23-20	LEVER ASSY (SHORT)	1
40	533 30 86-19	PIN, CLEVIS .25X1.75	2
41	533 31 51-63	BRKT. PLATE BAGGER	2
42	533 30 90-70	BLADE, 20.32 HIGH LIFT	2

www.emc-motors.com

N



MODEL NUMBER 4140G

PART NUMBER	SQUARE	NOTE	PART NUMBER	SQUARE	NOTE	PART NUMBER	SQUARE	NOTE	PART NUMBER	SQUARE	NOTE
506 55 80-01	K		533 05 55-11	K		533 30 03-34	K		533 30 44-44	C	N
506 56 56-01	K		533 05 56-86	M		533 30 03-45	I		533 30 44-48	F	
506 66 42-01	GH		533 05 60-30	BC		533 30 04-40	J		533 30 44-81	B	
506 78 88-01	K		533 05 61-80	JM		533 30 11-40	C		533 30 47-09	GM	
506 89 15-01	K		533 05 62-56	E		533 30 17-39	F		533 30 47-28	C	
533 00 06-42	C		533 05 63-65	J		533 30 22-05	F		533 30 47-29	F	
533 00 07-06	CI		533 05 64 25	I		533 30 22-06	F		533 30 47-30	F	
533 00 12-82	I		533 05 64-72	GM		533 30 22-08	F		533 30 49-67	F	
533 00 13-46	J		533 05 69-07	B		533 30 23-07	A		533 30 51-97	M	
533 00 14-98	ABCDEFGHI		533 05 71-57	E		533 30 23-14	A		533 30 52-80	C	
533 00 14-99	CEJ		533 05 71-58	C		533 30 23-19	E		533 30 52-83	J	
533 00 15-02	ABCDEFGHIK		533 05 72-20	K		533 30 23-21	C		533 30 52-84	I	
533 00 24-83	CI		533 05 73-24	FI		533 30 23-31	A		533 30 53-06	F	
533 00 29-68	A		533 05 74-44	IK		533 30 23-36	E		533 30 53-39	C	
533 00 35-35	J	N	533 05 74-76	K		533 30 23-38	F		533 30 53-40	C	
533 00 39-43	N		533 05 75-06	M		533 30 23-57	G		533 30 53 81	B	
533 00 82-60	J	M	533 05 75-47	K	N	533 30 23-60	F		533 30 53-82	F	
533 00 97-96	GH		533 05 75-51	K		533 30 23-79	F		533 30 54-24	B	
533 01 22-80	D		533 05 77-69	K		533 30 23-80	G		533 30 55-20	B	
533 01 22-89	D		533 05 82-47	I		533 30 23-83	F		533 30 55-22	G	
533 01 23-19	D		533 05 83-24	F		533 30 24-08	A		533 30 55-53	G	
533 01 23-25	D		533 05 83-26	F		533 30 25-24	A		533 30 55-54	G	
533 01 24-65	D		533 05 83-30	F		533 30 25-38	E		533 30 55-55	G	
533 01 24-66	D		533 05 83-32	F		533 30 25-82	E		533 30 57-70	L	
533 01 24-67	D		533 07 10-46	E		533 30 25-83	D		533 30 57-78	K	
533 01 24-01	A		533 07 11-00	A		533 30 25-88	D		533 30 58-20	A	
533 02 05-07	F		533 10 95-77	J		533 30 25-93	D		533 30 58-50	A	
533 02 08-64	A		533 11 13-16	H		533 30 25-94	D		533 30 59-09	F	
533 02 16-82	D		533 12 02-38	FJ		533 30 26-11	J		533 30 60-79	M	
533 02 20-53	D		533 12 03-68	K		533 30 27-14	I		533 30 62-62	M	
533 02 37-63	J		533 12 03-69	C		533 30 28-77	D		533 30 63-91	F	
533 02 41-67	CD		533 12 03-71	N		533 30 28-78	D		533 30 63-97	B	N
533 02 50-80	AE		533 12 03-76	I		533 30 28-97	R		533 30 63-99	B	
533 02 51-77	D		533 12 03-77	EJ		533 30 29-07	C		533 30 64-87	M	
533 03 02-89	E	M	533 12 03-82	CDJ		533 30 29-08	C		533 30 64-89	L	
533 03 50-75	N		533 12 03-83	J		533 30 29-12	K		533 30 65-69	C	
533 03 52-87	GH		533 12 03-85	BEF		533 30 29-63	J		533 30 65-70	D	
533 03 54-10	EL		533 12 03 92	AEM		533 30 30 64	K		533 30 66-69	CD	
533 03 54-97	AHDEFGH		533 12 03-93	BDJLM		533 30 30-77	I		533 30 68-52	L	
533 03 54-98	BDT		533 12 03-94	FFJ		533 30 31-09	D		533 30 68-58	A	
533 03 63-11	D		533 12 06-38	BHM		533 30 32-22	D		533 30 69-73	I	
533 03 63-68	BE		533 12 08-54	N		533 30 32-27	F		533 30 71-12	C	
533 03 66-25	C		533 12 12-22	G		533 30 32-28	A		533 30 71-13	K	
533 03 95-73	J		533 12 12-23	EM		533 30 32-30	F		533 30 71-74	G	
533 04 02-23	E		533 12 18-87	M		533 30 32-41	D		533 30 73-62	G	
533 04 14-82	K		533 12 19-00	M		533 30 40-25	E		533 30 73-85	F	
533 04 16-01	I		533 12 49-24	CD		533 30 40-49	E		533 30 78-17	L	
533 04 23-48	N		533 13 84-86	K		533 30 40-83	E		533 30 78-20	L	
533 04 41-08	DFT		533 13 84-89	GH		533 30 40-86	E		533 30 81-14	H	
533 04 48-11	BGHN		533 13 85-38	J		533 30 41-05	E		533 30 81-88	F	
533 04 51-71	E		533 18 00-16	F		533 30 41-15	D		533 30 83-84	D	
533 04 52-63	A		533 18 00-77	BCDFHJ		533 30 41-16	D		533 30 83-99	D	
533 04 56-02	DFN		533 18 00-79	DI		533 30 41-18	J		533 30 84-46	D	
533 04 67-08	H		533 18 01-34	CF		533 30 41-19	I	N	533 30 84-47	D	
533 04 78-28	G		533 18 15-96	N		533 30 41-20	D		533 30 84-59	GH	
533 04 80-44	J		533 18 16-46	D		533 30 41-21	D		533 30 86-19	M	
533 04 83-06	F		533 18 16-83	D		533 30 41 22	D		533 30 87-10	D	
533 04 93-32	J		533 18 17-09	DI		533 30 41-25	F		533 30 87-20	D	
533 05 05-16	I		533 18 77-45	K		533 30 41-30	C		533 30 88-97	A	
533 05 07 02	I		533 27 11 72	KM		533 30 42 08	E		533 30 88-98	A	
533 05 07-95	D		533 27 11-84	ER		533 30 42-09	F		533 30 90-70	IM	
533 05 08-18	I		533 27 11-90	G		533 30 42-12	E		533 30 91-59	H	
533 05 09-47	GH		533 27 46-54	D		533 30 42-17	C		533 30 92-35	B	
533 05 11-89	E		533 30 01-71	F		533 30 42-59	D		533 30 92-95	H	
533 05 13-35	HE		533 30 01-94	K		533 30 42-60	D		533 30 93-20	M	
533 05 14-49	I		533 30 03-02	AH		533 30 43-67	E		533 30 95-46	C	
533 05 21-51	A		533 30 03-03	A		533 30 44-20	I		533 30 96-15	J	
533 05 25-72	K		533 30 03-10	F		533 30 44-22	J		533 30 96-48	M	
533 05 36-52	C		533 30 03-11	F		533 30 44-24	J		533 31 01-94	M	
533 05 37-16	K		533 30 03-17	J		533 30 44-39	GH		533 31 03-26	J	
533 05 52-73	BCFGH		533 30 03-28	C		533 30 44-43	J		533 31 03-84	B	

N-New part
 Neues Teil
 Nouvelle piece
 Nueva pieza
 Ny detalj

MODEL NUMBER 4140G

PART NUMBER	SQUARE	NOTE	PART NUMBER	SQUARE	NOTE	PART NUMBER	SQUARE	NOTE	PART NUMBER	SQUARE	NOTE
533 31 05-53	L		533 32 23-20	M							
533 31 05-76	B		533 32 24-94	M							
533 31 06-70	C		533 32 24-95	N							
533 31 08-00	I		533 32 28-59	L							
533 31 10-66	L		533 32 29-80	M							
533 31 10-87	B	N	533 32 35-65	M							
533 31 17-30	L		533 32 35-66	M							
533 31 17-31	L		533 32 37-31	A							
533 31 23-02	J		533 32 37-43	D							
533 31 23-42	I		533 32 45-78	D							
533 31 27-01	F		533 32 47-95	A							
533 31 32-71	F		533 32 51-03	T							
533 31 33-16	I		533 32 52-32	K							
533 31 37-61	M		533 32 63-24	H							
533 31 37-74	M		533 32 64-80	I							
533 31 38-98	I		533 32 66-53	K							
533 31 44-16	C		533 32 66-54	K							
533 31 47-70	N		533 32 68-93	I							
533 31 47-97	G		533 32 73-50	K							
533 31 48-88	B		533 32 73-52	K							
533 31 48-89	B		533 32 73-55	K							
533 31 49-29	N		533 32 76-15	J							
533 31 49-75	J		533 32 76-16	J							
533 31 51-63	M		533 32 78-31	B							
533 31 52-20	N		533 32 80-26	J							
533 31 53-96	N		533 32 80-27	J	N						
533 31 55-99	G		533 32 82-57	J							
533 31 57-16	M		533 33 04-63	B	N						
533 31 59-02	K		533 33 08-47	A							
533 31 63-80	N		533 33 11-84	A							
533 31 63-98	N		533 33 13-79	A							
533 31 64-01	N		533 33 18-07	L							
533 31 64-02	N		533 33 18-17	L							
533 31 67-02	C	N	533 33 19-30	K							
533 31 68-51	L		533 33 20-43	K							
533 31 68-86	L		533 33 20-58	L							
533 31 68-97	N		533 33 20-96	L							
533 31 69-87	N		533 33 21-13	A	N						
533 31 70-17	I		533 33 21-33	A							
533 31 70-18	I		533 33 21-37	L							
533 31 70-19	C		533 33 21-38	L							
533 31 70-41	T		533 33 24-00	M							
533 31 71-35	M		533 33 24-21	H							
533 31 77-05	I		533 40 26-89	L	N						
533 31 80-73	M		533 40 27-00	L	N						
533 31 83-04	A		533 40 27-01	L	N						
533 31 84-66	N		533 41 23-49	D							
533 31 93-87	B		533 42 10-51	D							
533 31 93-88	B		533 42 16-44	J							
533 31 94-47	N		533 44 63-63	DJ							
533 31 96-86	C	N	533 45 63-78	A							
533 31 98-68	J		533 45 67-22	D							
533 32 05-31	D		533 99 53-46	AH							
533 32 08-42	L		533 99 64-16	C							
533 32 08-43	L		734 11 52-01	BM							
533 32 08-44	L		734 11 78-01	I							
533 32 08-45	L		738 22 03-19	I							
533 32 09-22	G		810 04 08-00	M							
533 32 13-06	G		872 11 05-06	GMJJ							
533 32 13-82	D		873 22 06-00	I							
533 32 14-21	E		874 61 06-24	D							
533 32 15-16	C		874 76 04-12	K							
533 32 18-10	A		874 78 04-14	ABE							
533 32 20-60	B		874 78 05-16	N							
533 32 20-69	B		874 78 05-44	D							
533 32 21-16	I		874 78 06-16	D							
533 32 21-57	M		874 78 06-20	C							
533 32 21-72	L		874 78 06-48	C							
533 32 21-73	L										
533 32 21-74	L										
533 32 21-75	L										

N-New part
 Neues teil
 Nouvelle piece
 Nueva pieza
 Ny detalj