

PARTS CATALOG

ROBIN NB2200 A (CE)

1. MACHINE BODY	2
2. CONTROL LEVER ASSY	4
3. ENGINE BODY	6
4. CARBURETOR & AIR CLEANER	9
5. STANDARD ACCESSORIES	11

NB2200*0501

NB2200(A ユニツク 2003)

10,000台に対し

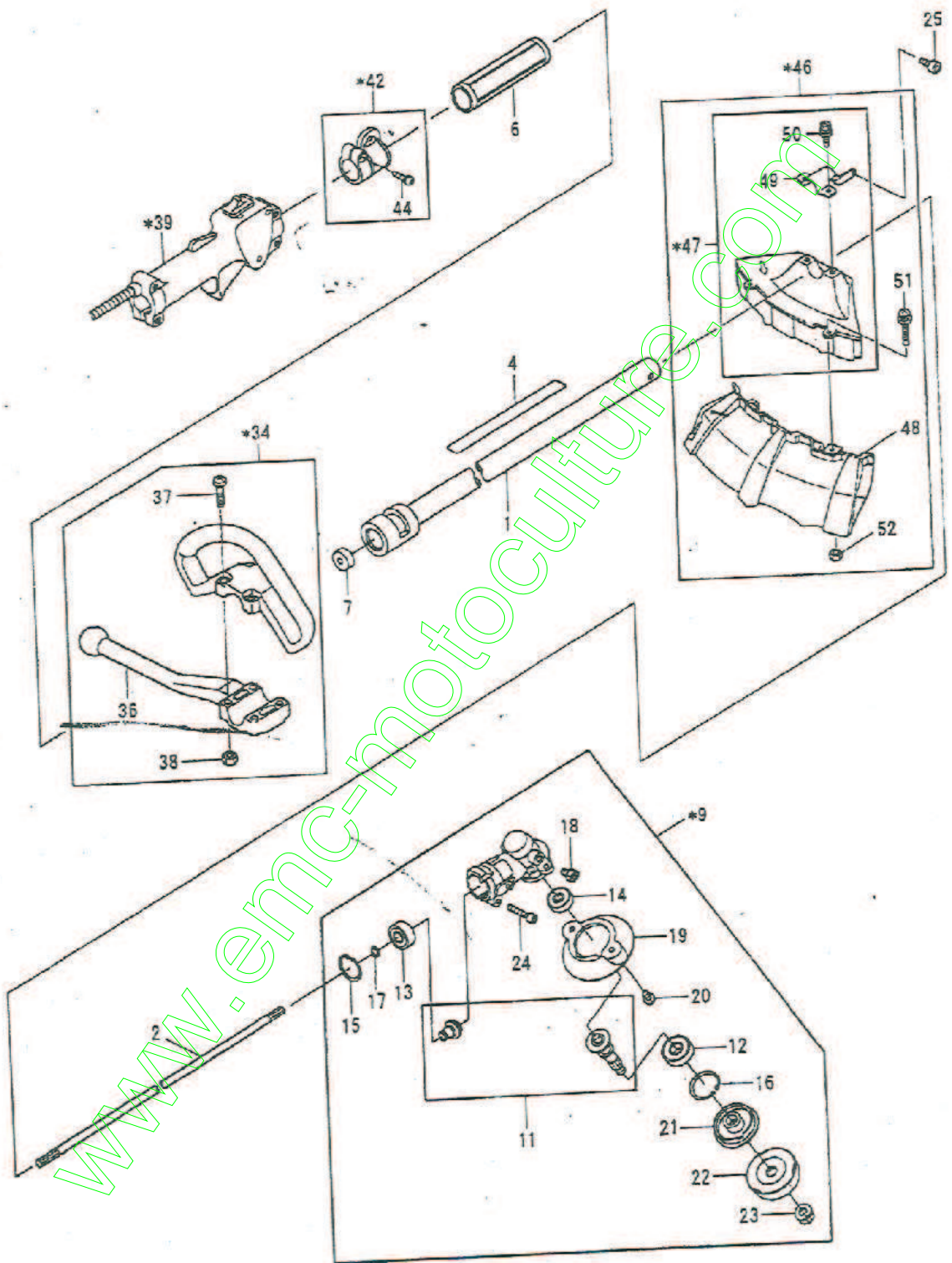
A : 消耗品、交換部品 (ゴム部品、ガスケット等)	2 ~ 3%程度	200 ~ 300
B : 摩耗、破損、紛失等の考えられる物	0.5 ~ 1%程度	50 ~ 100
C : ほとんど動かない物	0.1 ~ 0.2%程度	10 ~ 20

点検	点検	作成
	中村 04.3.15	倉倉 04.3.13

営業技術資料 B804034

1. MACHINE BODY

NB2200(A シュツ 2003)



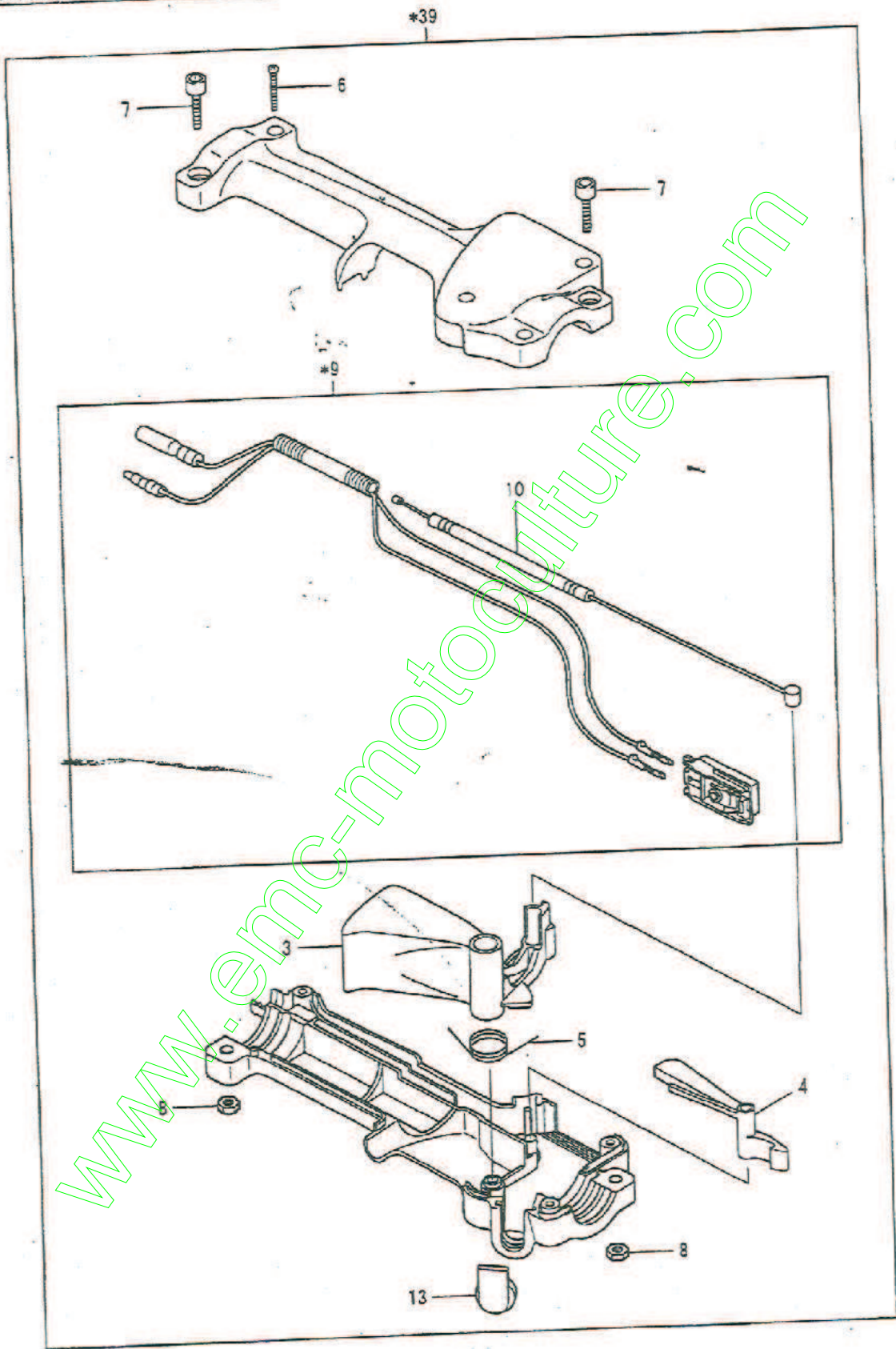
1. MACHINE BODY

NB2200(A 1317 2003)

REF. NO.	PART NUMBER	PART NAME	STD PRICE	QTY.	REMARKS
1	619 10440 01-	PIPE, SHAFT COMPL		1	
2	619 15018 00-	SHAFT		1	
4	619 90640 10	LABEL, CAUTION		1	
6	627 15015 01-	SPACER		1	
7	619 15021 00-	FELT		1	
*9	624 30060 02-	CASE, GEAR ASSY		1	INCL. 11~24
11	624 30080 02	SHAFT, CUTTER SET		1	
12	060 01099 10-	BALL BEARING		1	#6000DDU
13	621 25003 00-	BALL BEARING		1	#609ZZ
14	060 00699 90-	BALL BEARING		1	#626ZZ
15	003 14240 00-	SNAPRING, INNER		1	φ24
16	003 14260 00-	SNAPRING, INNER		1	φ26
17	619 30061 20-	SNAPRING, OUTER		1	φ9
18	625 30110 12-	BOLT, OIL		1	M6×9 W
19	621 85002 00-1	GUARD		1	
20	014 00593 90-	SCREW ASSEMBLY		2	M5×12 W, SW
21	621 85016 01-1	WASHER, RECEIVE		1	
22	621 80030 01-	WASHER, CLAMP COMPL		1	
23	625 85050 01-	NUT		1	M8(C. CLOCK W) SW
24	011 90598 90-	SOCKET HEAD BOLT		1	M5×25 SW
25	011 90594 90-	SOCKET HEAD BOLT		1	M5×14 W, SW
*34	621 40160 00-	HANDLE SET		1	INCL. 36~38
36	621 40160 20	HOLDER, HANDLE		1	
37	621 40160 30	SCREW		4	M5×25
38	002 27050 00	NUT		4	M5
*39	619 50210 00-	CONTROL LEVER ASSY		1	
*42	619 70050 01-	HANGER ASSY		1	INCL. 44
44	014 00593 60-	SCREW ASSY		1	M5×20 W, SW
*46	619 80140 00-	PROTECTOR ASSY		1	INCL. *47~52
*47	625 80810 01-1	PROTECTOR ASSY		1	INCL. 49, 50
48	619 80080 01-1	PROTECTOR COMPL		1	
49	625 85082 00-	CLAMP, PROTECTOR		1	
50	010 00697 90-	BOLT		2	M6×30 W, SW
51	014 00593 80-	SCREW		2	M5×40 W, SW
52	002 18050 00-	NUT		2	M5

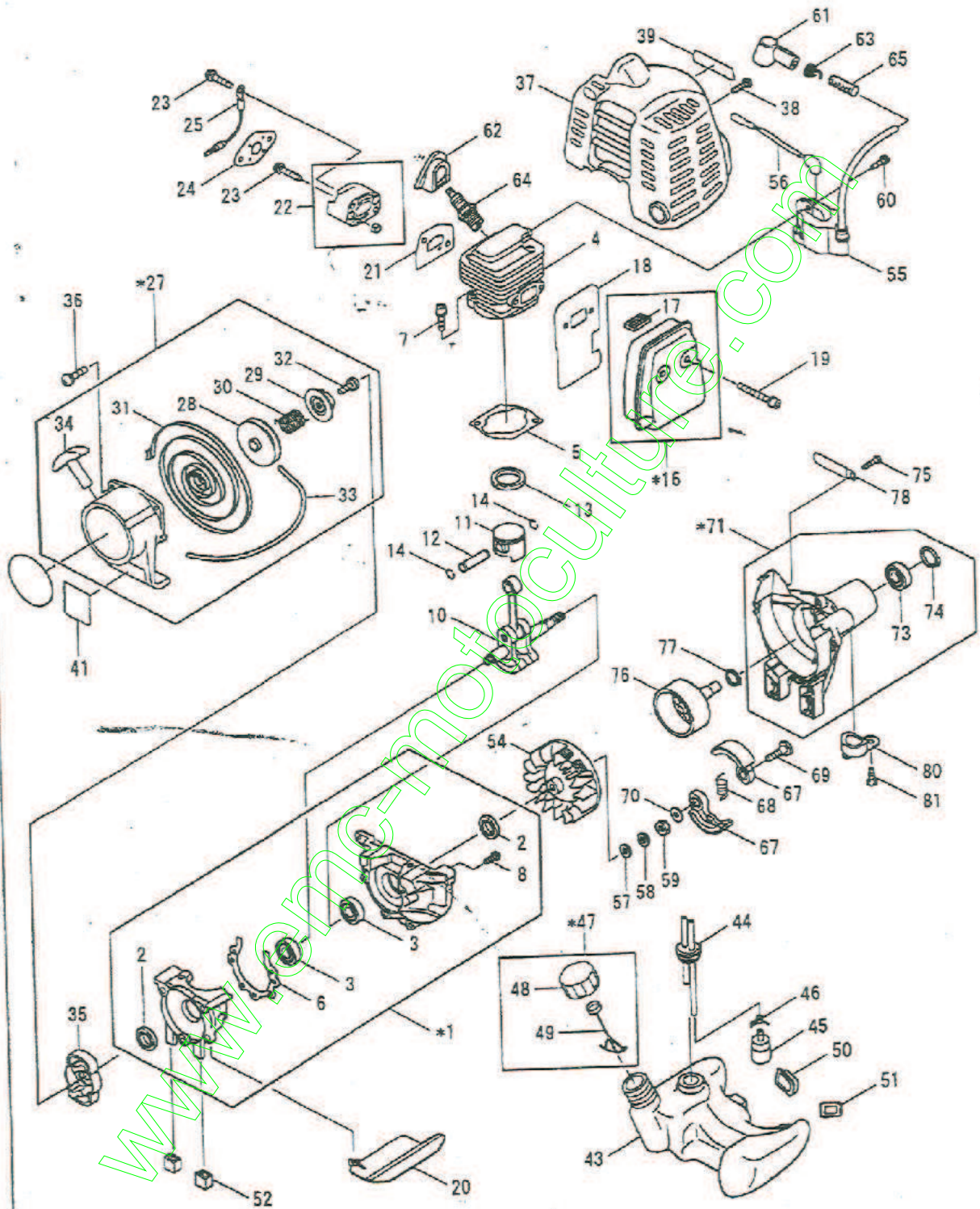
2. CONTROL LEVER ASSY

NB2200(A 10月 2003)



3. ENGINE BODY

NB2200(A ヨシュツ 2003)

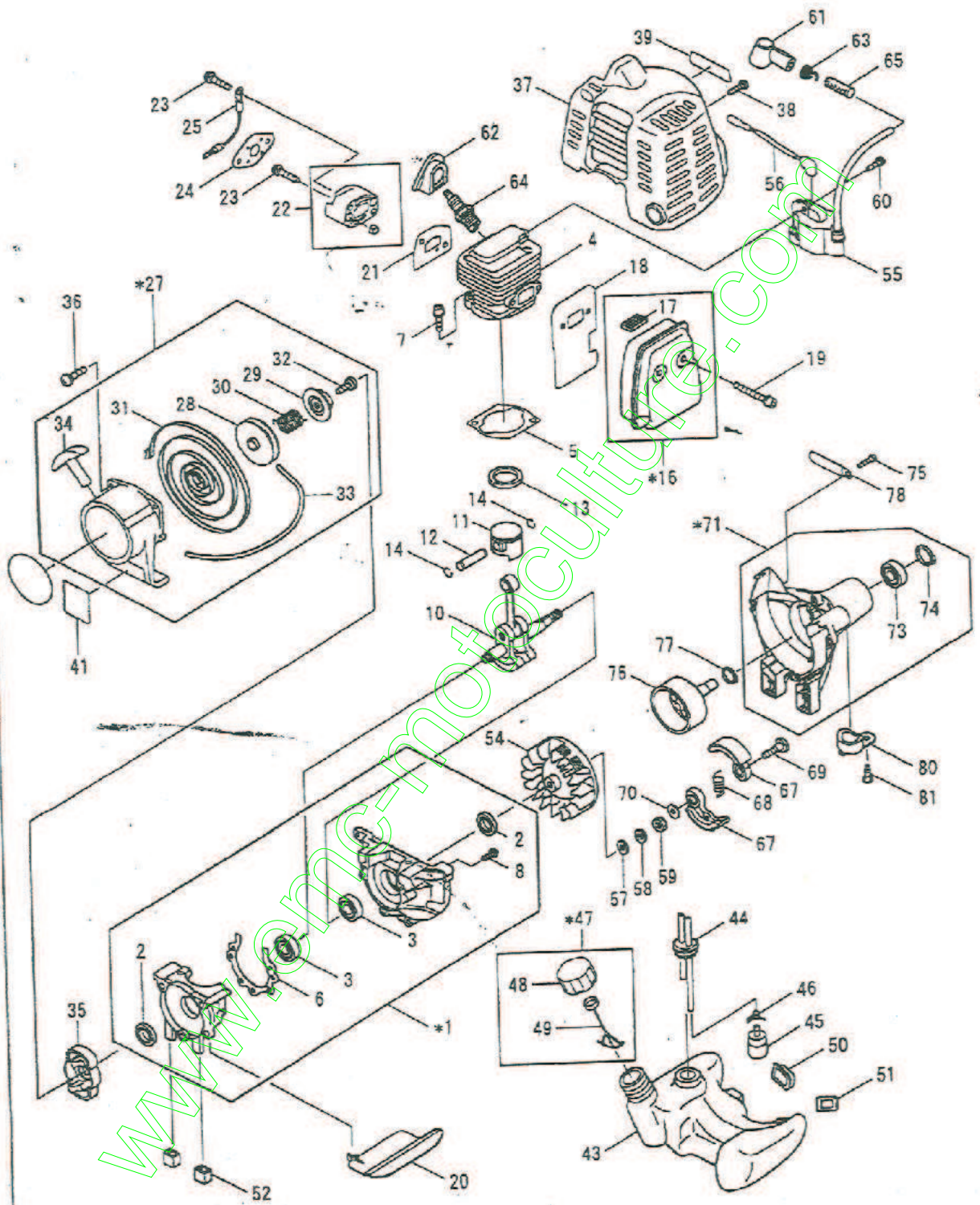


3. ENGINE BODY

REF. NO.	PART NUMBER	PART NAME	STD PRICE	QTY.	REMARKS
				1	INCL. 2, 3, 6, 8
*1	519 10040 01	CRANKCASE ASSY		2	
2	044 01099 80-	OIL SEAL		2	#6000
3	060 01089 80-	BALL BEARING		1	
4	519 15009 01-	CYLINDER		1	
5	519 15003 01-	GASKET, CYLINDER		1	
6	519 15004 00-	GASKET, CRANKCASE		2	M5×20 W, SW
7	011 90597 30-	SOCKET HEAD BOLT		3	M5×25 SW
8	014 00595 20-	SCREW			
10	519 20050 01-	CRANKSHAFT COMPL		1	
11	519 25017 01-	PISTON		1	
12	519 25005 00-	PIN, PISTON		1	
13	521 25005 00-	RING, PISTON		2	
14	056 50899 70-	CLIP			
*16	519 30010 02-1	MUFFLER, EXHAUST		1	INCL. 17
17	519 30010 50	SPARK ARRESTER		1	
18	519 35000 02-	GASKET, MUFFLER		2	M5×40 W
19	011 90595 20-	SOCKET HEAD BOLT		1	
20	519 35001 01-	PLATE, MUFFLER		1	
21	519 35005 00-	GASKET, INSULATOR		1	
22	523 30140 00-2	INSULATOR COMPL		2	M5×25 W, SW
23	014 00595 00-	SCREW(M5×25, W, SW, ♯)		1	
24	510 55028 01-	GASKET, AIR CLEANER		1	
25	616 55002 01-	WIRE			
*27	519 50170 00-	STARTER, REWIND		1	INCL. 28~34
28	519 50190 10	REEL		1	
29	519 50190 20	CAM PLATE		1	
30	519 50190 30	DAMPER SPRING		1	
31	521 50020 30	SPIRAL SPRING		1	
32	519 50020 60	SET SCREW		1	
33	510 50151 30	STARTER ROPE		1	
34	522 50040 20	STARTER KNOB		1	
35	519 50180 00-	PULLEY		3	M4×16 W, SW
36	014 00497 70-	SCREW ASSY (M4×16, W, SW/D)		1	
37	519 55021 00-	COVER, CYLINDER		1	φ5×14
38	015 00597 90-	TAPPING SCREW (5×14 φD)		1	
39	521 95007 01-	LABEL, TRADE MARK			
41	073 63099 40-	LABEL, SOUND LEVEL		1	
43	519 65000 03-1	TANK, FUEL		1	
44	085 11599 20-	TUBE		1	
45	523 65039 00-	FILTER		1	
46	056 10599 90-	HOSE CLAMP		1	

3. ENGINE BODY

NB2200(A シュツ 2003)



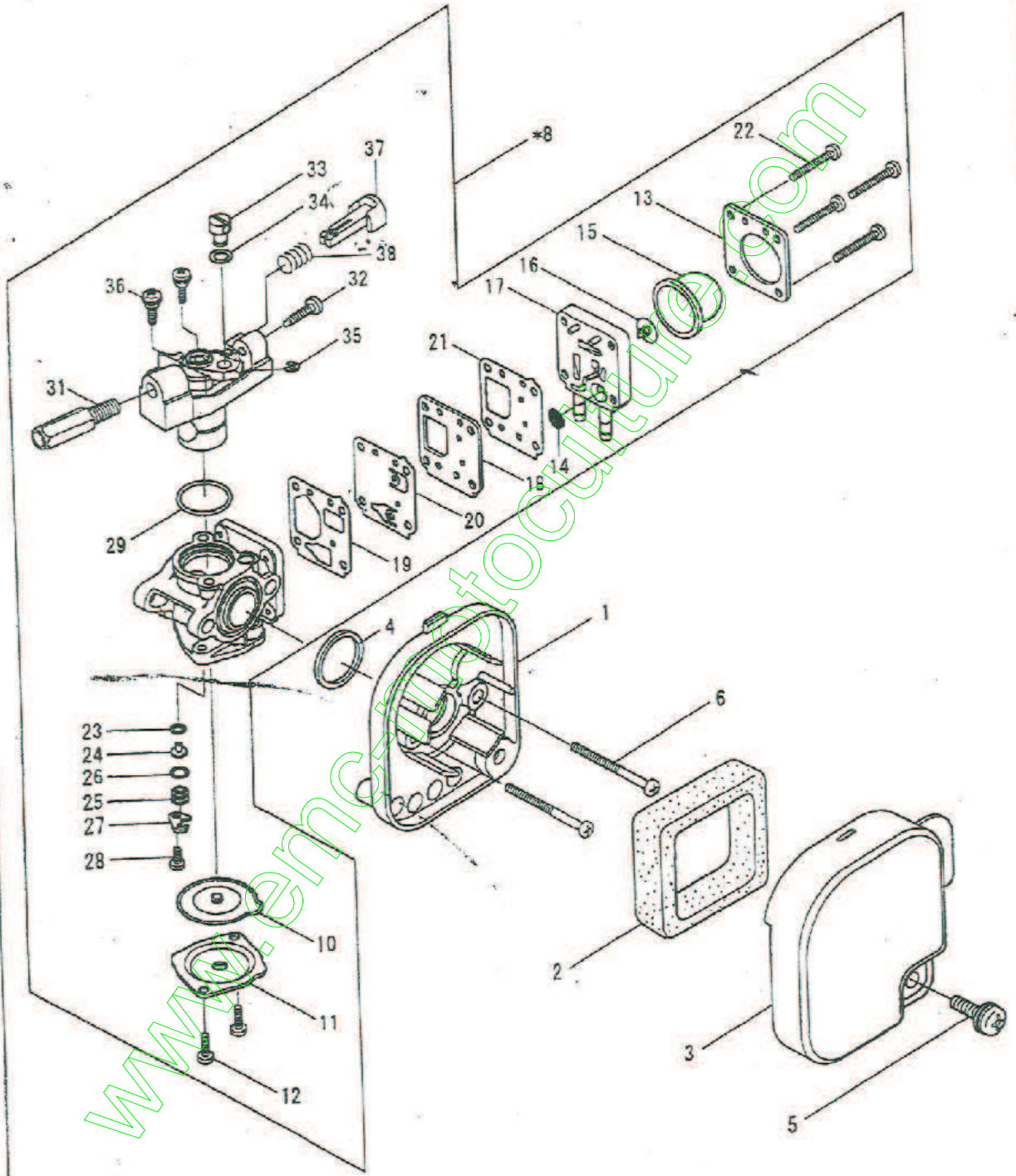
3. ENGINE BODY

NB2200(A 12月 2003)

REF. NO.	PART NUMBER	PART NAME	STD PRICE	QTY.	REMARKS
				1	INCL. 48.49
*47	525 60590 00-	CAP, FUEL TANK ASSY		1	
48	525 60580 00	CAP, FUEL TANK ASSY		1	
49	525 60670 00	STRAP ASSY		1	
50	503 65002 00-1	PLATE		1	
51	503 65003 00-1	PLATE		2	
52	521 65002 00-	DAMPER			
				1	
54	519 70160 10-	FLYWHEEL		1	
55	519 70110 10-	COIL, IGNITION		1	
56	519 70180 00-	WIRE COMPL		1	
57	003 10080 00-	WASHER		1	
58	003 20080 00-	SPRING WASHER		1	
59	002 28080 00-	NUT		2	M8
60	014 00497 70-	SCREW ASSY (M4*16, W, SW20)		1	M4×16 W, SW
61	065 50098 70-1	CAP, PLUG		1	
62	519 75001 00-	COVER, PLUG CAP		1	
63	065 40099 31-	SPRING, PLUG CAP		1	BPMR7A
64	065 01496 61-	PLUG, SPARK		1	
65	085 11199 30-	TUBE			
				2	
67	592 85000 00-	SHOE, CLUTCH		1	
68	592 85001 00-	SPRING		2	
69	592 85002 00-	BOLT, CLUTCH		2	
70	592 85003 00-	WASHER		1	INCL. 73.74
*71	619 10520 00-	CASE, CLUTCH ASSY			
				1	#6000ZZ
73	060 01099 40-	BALL BEARING		1	φ26
74	003 14260 00-	SNAPRING, INNER		3	φ5×20
75	015 00597 80-	TAPPING SCREW (5×20 φD)		1	
76	619 20040 00-	DRUM, CLUTCH COMPL		1	φ10
77	003 15100 00-	SNAPRING, OUTER		1	
78	056 60599 80-	CLAMP			
				1	
80	619 15016 02-	STOPPER		1	φ5×20
81	015 00597 70-	TAPPING SCREW			

4. CARBURETOR & AIR CLEANER

NB2200(A 10/17 2003)



4. CARBURETOR & AIR CLEANER

NB2200(A 1ｼｯﾌﾟ 2003)

REF. NO.	PART NUMBER	PART NAME	STD PRICE	QTY.	REMARKS	
1	519 30180 10-	PLATE,AIR CLEANER ASSY		1		B
2	519 30170 30-	ELEMENT,AIR CLEANER		1		A
3	519 30180 20-	CASE,AIR CLEANER		1		B
4	024 01599 90	O-RING		1		A
5	014 00594 80-	SCREW ASSY (M5*14,W,SW/D)		1	M5x14 W.SW	C
6	004 31056 00-	SCREW,PAN HEAD		2	M5x60	C
※8	519 60200 00-	CARBURETOR		1	INCL. 10-38	B
10	519 60190 40	DIAPHRAGM ASSY.		1		A
11	519 60190 50	DIAPHRAGM COVER		1		C
12	519 60190 60	SCREW		2		C
13	519 60193 20	PRIMING PUMP PLATE		1		C
14	519 60193 30	FILTER		1		C
15	524 60090 40	PRIMING PUMP		1		C
16	524 60090 30	COMBINATION VALVE		1		C
17	519 60193 40	PUMP COVER		1		C
18	519 60193 50	PUMP PLATE		1		C
19	519 60191 10	PUMP PACKING		1		C
20	519 60191 20	PUMP DIAPHRAGM		1		C
21	519 60191 30	PUMP PACKING		1		C
22	519 60191 40	SCREW		4		A
23	519 60191 50	O-RING		1		A
24	519 60191 60	MAIN JET		1		A
25	519 60193 60	CHECK VALVE ASSY		1		A
28	519 60194 10	O-RING		1		B
27	519 60194 20	GUIDE PLATE		1		C
28	519 60194 30	SCREW		1		A
29	519 60192 20	O-RING		1		A
31	519 60192 40	ADJUST SCREW		1		C
32	519 60192 50	SLOW STOP SCREW		1		C
33	519 60194 50	LEVER END		1		C
34	519 60194 60	WASHER		1		C
35	519 60195 10	O-RING		1		C
38	519 60193 10	SCREW		2		C
37	519 60360 10	STARTER LEVER		1		C
38	519 60360 20	STARTER SPRING		1		C

5. STANDARD ACCESSORIES

NB2200(A 1月 2003)

