



Model PR18-2A Power rotor

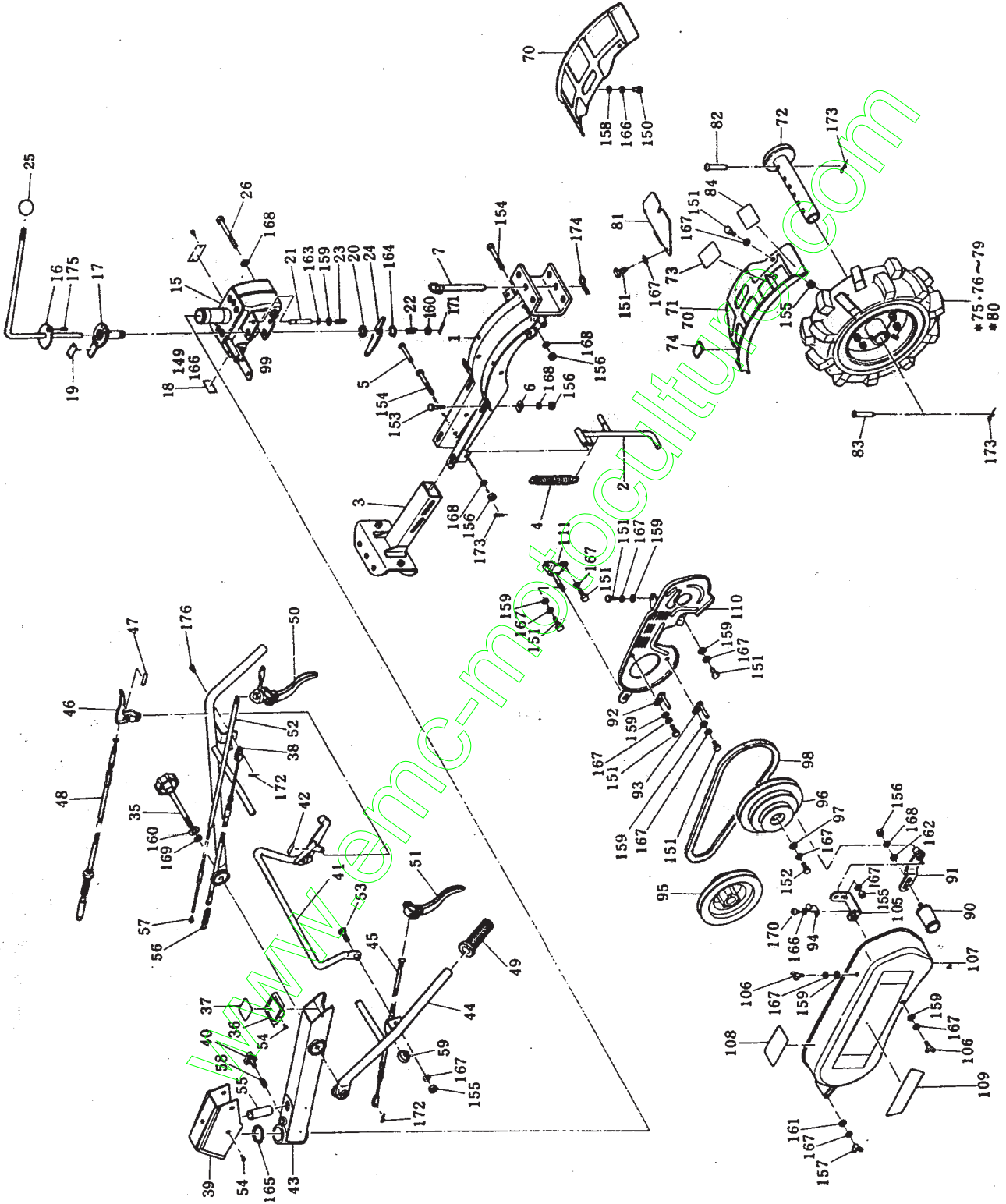
2 FEB 1994
PARTS CATALOG

Contents

Machine body	2
Transmission	4
Standard accessories	6



FUJIROBIN INDUSTRIES LTD.



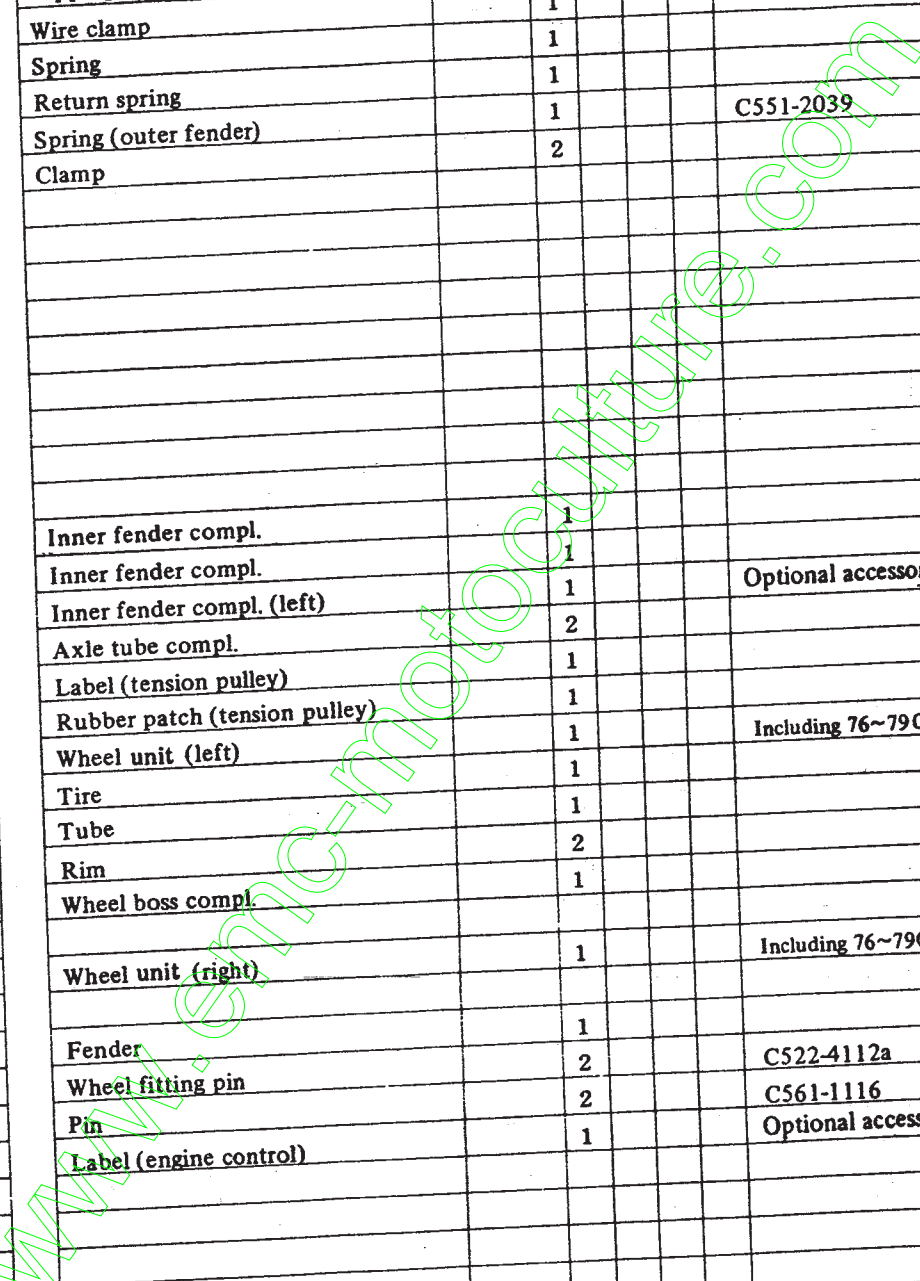
Machine body

PR18-2A

Ref. No.	Part Number	Part Name	Price YEN/ Piece	Quantity			Description
1	PR18-1080a U	Frame compl.		1			
2	PR18-1082	Stand compl.		1			
3	PR18-1084/1U	Weight mount compl.		1			
4	C521-1111/1a	Spring		1			
5	0307 10995 0	Pin		1			R61-3103a
6	RT55-1108a	Washer (engine)		4			
7	0307 16999 0	Pin		1			C521-1015/1a
15	PR18-2020/1G	Handle mount ass'y		1			
16	PR18-2022/1	Change lever compl.		1			
17	PR18-2024c	Shaft-cylinder ass'y		1			
18	PR18-2109a	Label (speed change)		1			
19	PR18-2110	Label (indication)		1			
20	PR18-2114	Spacer		1			
21	PR18-2115/1	Stopper pin		1			
22	PR18-2117	Spring (change lever)		1			
23	PR18-2118	Spring (stopper)		1			
24	PR18-2119a	Lever		1			
25	GH52B-4151a	Grip (change lever)		1			
26	0100 10996 0	Bolt		2			PR18-2127
35	PR18-2014d	Clamp screw compl.		1			
36	PR18-2116 G	Handle cover		1			
37	PR18-9118	Label (handle cover)		1			
38	PR18-2018	Main clutch wire compl.		1			
39	PR18-2021 G	Mount cover compl.		1			
40	PR18-2025	Knob bolt compl.		1			
41	PR18-2051b G	Clutch lever ass'y		1			
42	PR18-9119	Clutch mark		1			
43	PR18-2081a G	Handle frame compl.		1			
44	PR18-2088/1G	Handle compl.		1			
45	PR18-2095	Side clutch wire compl. PL.		2			
46	C561-2014/1	Brake lever compl.		1			
47	PR18-2147	Label (handle turn)		1			Optional accessory
48	PR18-2099c	Handle turn wire compl.		1			
49	C522-3014	Grip compl.		2			
50	R31-2012/1a	Side clutch lever compl. (A)		1			

Machine body

ef. No.	Part Number	Part Name	Price YEN / Piece	Quantity				Description
51	R31-2013/1a	Side clutch lever compl. (B)		1				
52	R55-2015	Throttle wire compl.		1				
53	PR18-2112a	Bolt (clutch lever)		2				
54	PR18-2124	Tapping screw 4φ		6				
55	PR18-2125	Wire clamp		1				
56	C521-4114/1a	Spring		1				
57	C522-3120a	Return spring		1				C551-2039
58	R51-3133a	Spring (outer fender)		1				
59	0566 08998 0	Clamp		2				
70	PR18-3091 U	Inner fender compl.		1				
71	PR18-3091 U	Inner fender compl.		1				Optional accessory
71	PR18-3092 U	Inner fender compl. (left)		1				
72	PR18-9018	Axle tube compl.		2				
73	PR18-9120	Label (tension pulley)		1				
74	ST40-3116a	Rubber patch (tension pulley)		1				Including 76~79 Optional accessories
*75	R38-3001a	Wheel unit (left)		1				
76	R38-3001a~①	Tire		1				
77	R38-3001a~②	Tube		1				
78	R38-3001a~③	Rim		2				
79	R31-3084a	Wheel boss compl.		1				
*80	R38-3002a	Wheel unit (right)		1				Including 76~79 Optional accessories
81	PR18-3103 U	Fender		1				
82	0307 10997 0	Wheel fitting pin		2				C522-4112a
83	0307 10996 0	Pin		2				C561-1116
84	ST50-3143	Label (engine control)		1				Optional accessory
90	PR18-4003a	Tension pulley unit		1				
91	PR18-4012b	Tension arm compl.		1				
92	PR18-4030a	Belt holder compl. (front, upper)		1				
93	PR18-4032	Belt holder compl. (front, lower)		1				
94	PR18-4133	Belt holder (rear)		1				
95	PR18-4807a	V-pulley (E)		1				
96	PR18-4809a	V-pulley (M)		1				
97	0230 09998 0	Pulley lock washer		1				
98	PR18-4118	V-belt		1				



Machine body

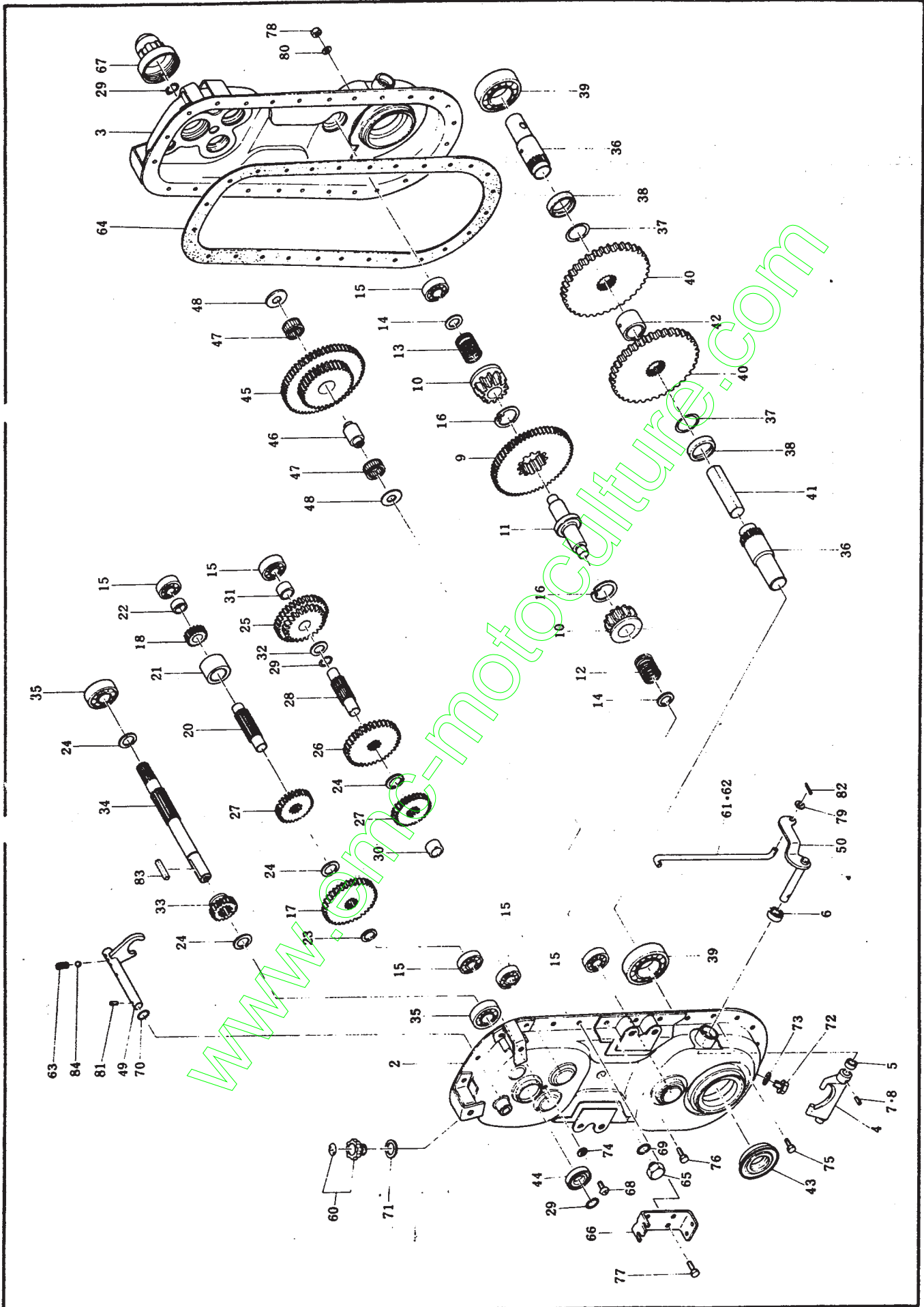
PR18-2A

Ref. No.	Part Number	Part Name	Price YEN Piece	Quantity			Description
99	PR18-4033	Belt holder compl. (rear, upper)		1			
105	PR18-5035/1	Belt cover fitting plate compl. (lower)		1			
106	PR10-4044 a	Wing nut compl.		2			
107	PR18-9032 G	Belt cover compl.		1			
108	PR18-9121	Label		1			
109	PR18-5112	Mark		1			
110	PR18-5045 G	Back cover compl.		1			Optional accessory
111	PR18-5040b	Belt cover adapter compl.		1			
149	00165 0612 0	Bolt		1			M6x12
150	00165 0616 0	Bolt		2			M6x16
151	00165 0816 0	Bolt		11			M8x16
152	00165 0820 0	Bolt		1			M8x20
153	00165 1040 0	Bolt		4			M10x40
154	00166 1070 0	Bolt		6			M10x70
155	00217 0800 0	Nut		7			M8
156	00217 1000 0	Nut		11			M10
157	00241 0801 0	Wing nut		1			M8
158	00310 0600 0	Washer		2			M6
159	00310 0800 0	Washer		8			M8
160	00310 1200 0	Wahser		2			M12

www.emc-motoculture.com

Transmission

MP13B (PR18-2A)



Transmission

MP13B

Ref. No.	Part Number	Part Name	Price YEN / Piece	Quantity			Description
* 1	PR18-9008	Transmission unit		1 組			Including 2~18, 19~50, and 60~80
2	2310-800105	Case L compl.		1			M-9002081
3	2310-800204	Case R compl.		1			M-9002091
4	2144-403004	Shifter (clutch)		2			M-4035621
5	2103-406701	Collar 132010		2			M-1044120
6	2104-407103	Oil seal 13257		2			M-1043070
7	0460-030220	3 pin S		2			F2541-7129
8	0460-050220	5 pin S		2			F2541-7206
9	2123-404503	Gear J55		1			M-4035510
10	2124-403604	Gear K14		2			M-4042530
11	2131-403307	Shaft E		1			M-4035570
12	2152-405007	Spring L (clutch)		1			M1049080
13	2152-405106	Spring R (clutch)		1			M-1049070
14	2102-409604	Washer 17302		2			M-1042910
15	0501-620300	Ball bearing		6			F1911-6203
16	0610-042000	42 Snap ring H		2			F2511-42
17	2122-401107	Gear B (G) 41		1			M-4035440
18	2122-401305	Gear D14		1			M-4035471
20	2132-401807	Shaft B		1			M-4035542
21	2103-406800	Collar 202523		1			M-1042901
22	2103-406909	Collar 17258		1			M-1044330
23	0701-172000	Washer		1			F1572-17x2
24	0701-202000	Washer		4			F1572-20x2
25	2330-404202	Gear CH compl.		1			M-0407181
26	2122-401404	Gear B41		1			M-4035441
27	2122-401206	Gear E (F) 28		2			M-4035480
28	2132-401906	Shaft C		1			M-4042490
29	2152-400309	Snap ring 20		3			M-1008910
30	2103-407005	Collar 172513.8		1			M1042891
31	2103-407104	Collar 172511		1			M-1044360
32	0702-202000	Washer		1			F1573-20x2
33	2122-401008	Gear A20		1			M-4035430
34	2133-603505	Shaft A		1			M-6012252
35	0501-620400	Ball bearing		2			F1911-6204
36	2133-401202	Shaft G		2			M-4035581
37	2152-401504	Snap ring 35		2			M-1001240
38	2103-411006	Snap ring holder		2			M-1042930
39	0501-620700	Ball bearing		2			F1911-6207
40	2124-403505	Gear L46		2			M-4035530
41	2131-403208	Shaft M		1			M-1044100
42	2103-406602	Collar 314026		1			M-1042920
43	2104-404706	Oil seal 35576614		2			M-1026760
44	2104-400500	Oil seal 20407		2			M-1000460
45	2330-404004	Gear IS compl.		1			M-0406541
46	2131-403000	Shaft D		1			M-4035560
47	0531-242913	Needle bearing		2			F1962-K242913
48	2102-409505	Washer 16342		2			M-1042880

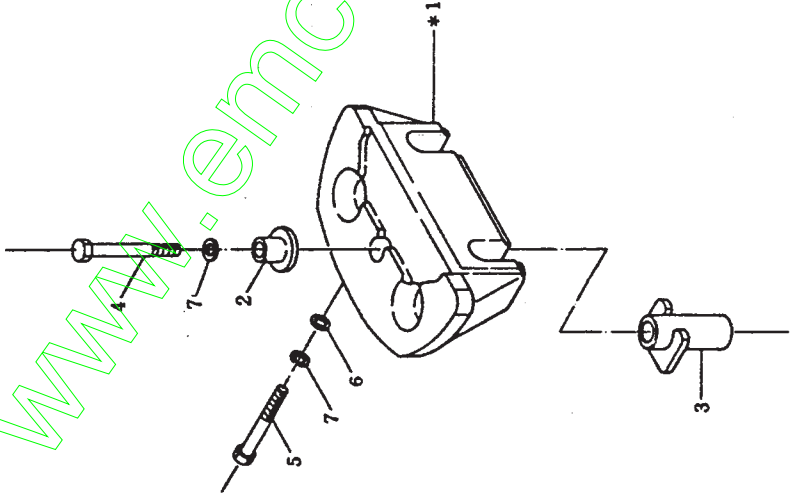
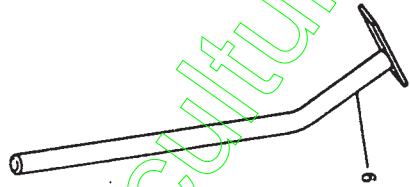
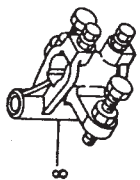
One out of three pieces is optional accessory.

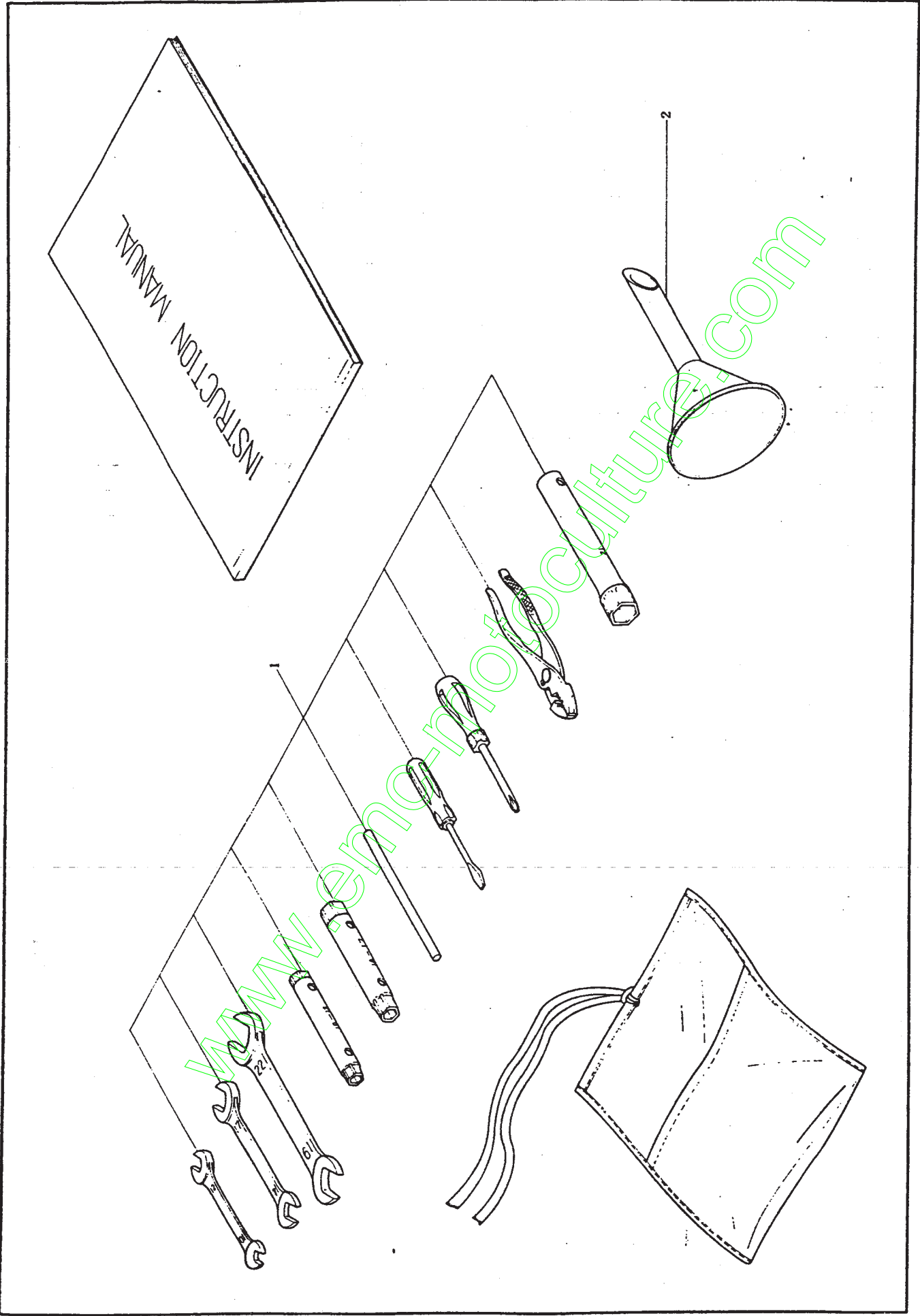
Transmission

MP13B

Ref. No.	Part Number	Part Name	Price YEN Piece	Quantity			Description
49	2340-404506	Shifter compl.		1			M-0406551
50	2340-404605	Lever SC compl.		2			M-0406761
60	2350-401106	Plug 20 label compl.		1			M-0104091
61	2141-407401	Rod L		1			M-4036950
62	2141-407500	Rod R		1			M-4036960
63	2152-401009	Spring (fork)		1			M-1002900
64	2153-800708	Packing (case)		1			M-8002400
65	2154-403407	Clamping bolt 10		2			M-1042940
66	2156-404709	Cable guide		2			M-4035631
67	2157-401707	Cap		1			M-1008411
68	2101-404501	Pan-head screw 6~8		1			F1312-6x08
69	2104-406908	O-ring P16		2			M-1026460
70	2104-407004	O-ring P13		1			M-1042980
71	2105-406006	Gasket 20		1			M-1043950
72	2105-405504	Plug 12		1			M-1044231
73	2105-405603	Gasket 12		1			M-1044240
74	2105-406402	Gasket 6		1			M-1042230
75	0107-060120	6 bolt		15			F1103-7T-06x012
76	0107-060160	6 bolt		10			F1103-7T-06x016
77	0107-060180	6 bolt		2			F1103-7T-06x018
78	0304-062000	6 nut		27			F1242-4T-06
79	0400-060000	6 washer					F1522-06
80	0410-060000	6 washer S		27			F1532-06
81	0460-040200	4 pin S		1			F2541-7168
82	0470-160120	1 * 6 cotter pin		2			F1701-1.6x12
83	0480-050350	5 key		1			F2401-5x35
84	0650-050160	5/16 steel ball		1			F1801-5/16

www.emc-motoculture.com





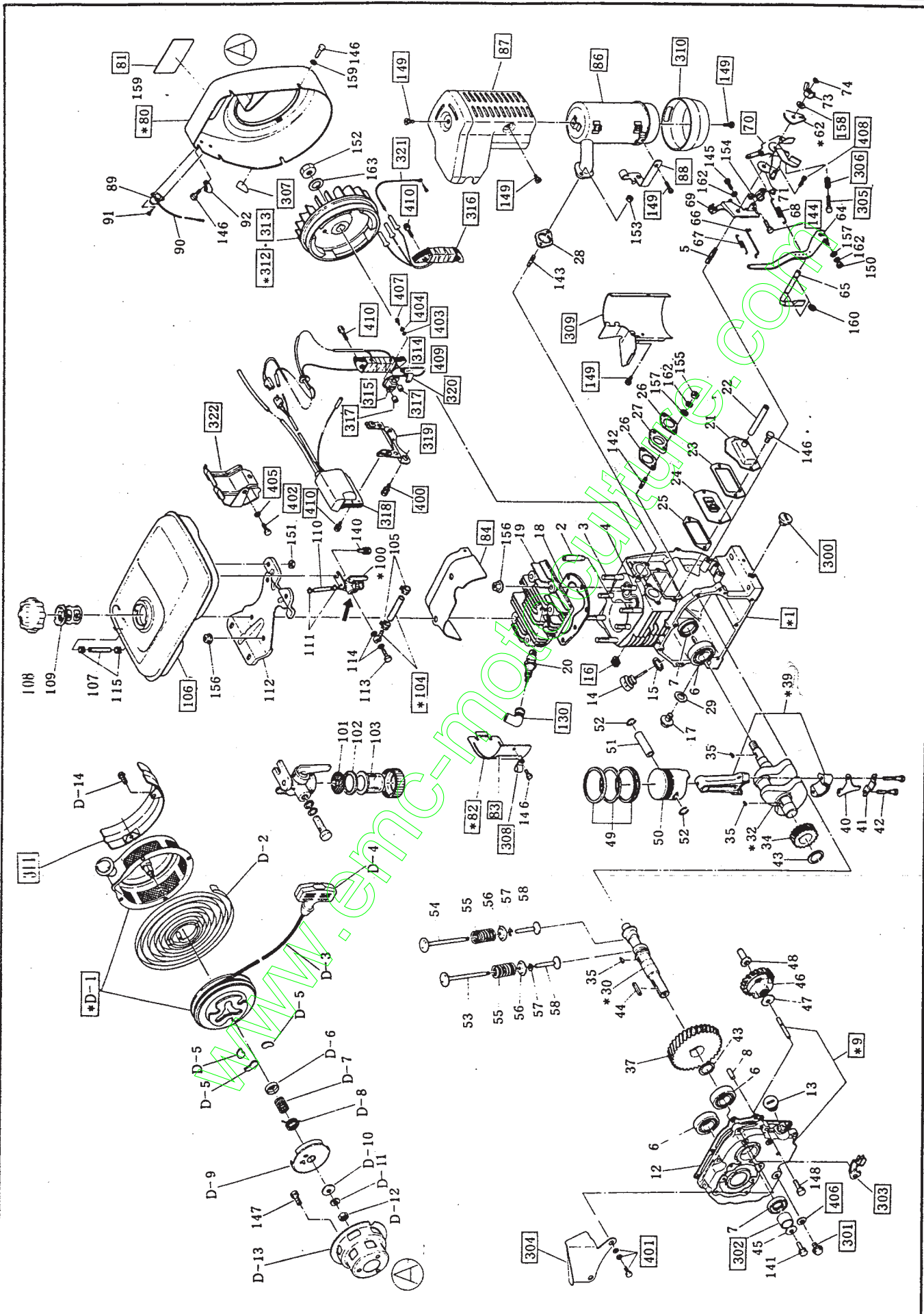
www.emc-motoculture.com

Model EY18-3B (PR18-2A) Onboard engine

These onboard engines are based on Model EY18-3B Standard engine. Accordingly, the part list provided in the following pages touches only upon the "exclusive-use" parts of onboard engine. For the "common-use" parts, please refer to the part list for Model EY18-3B.

Contents

Engine body.....	2
Carburetor and air cleaner	6



Engine body

EY18-3B (PR18-2A)

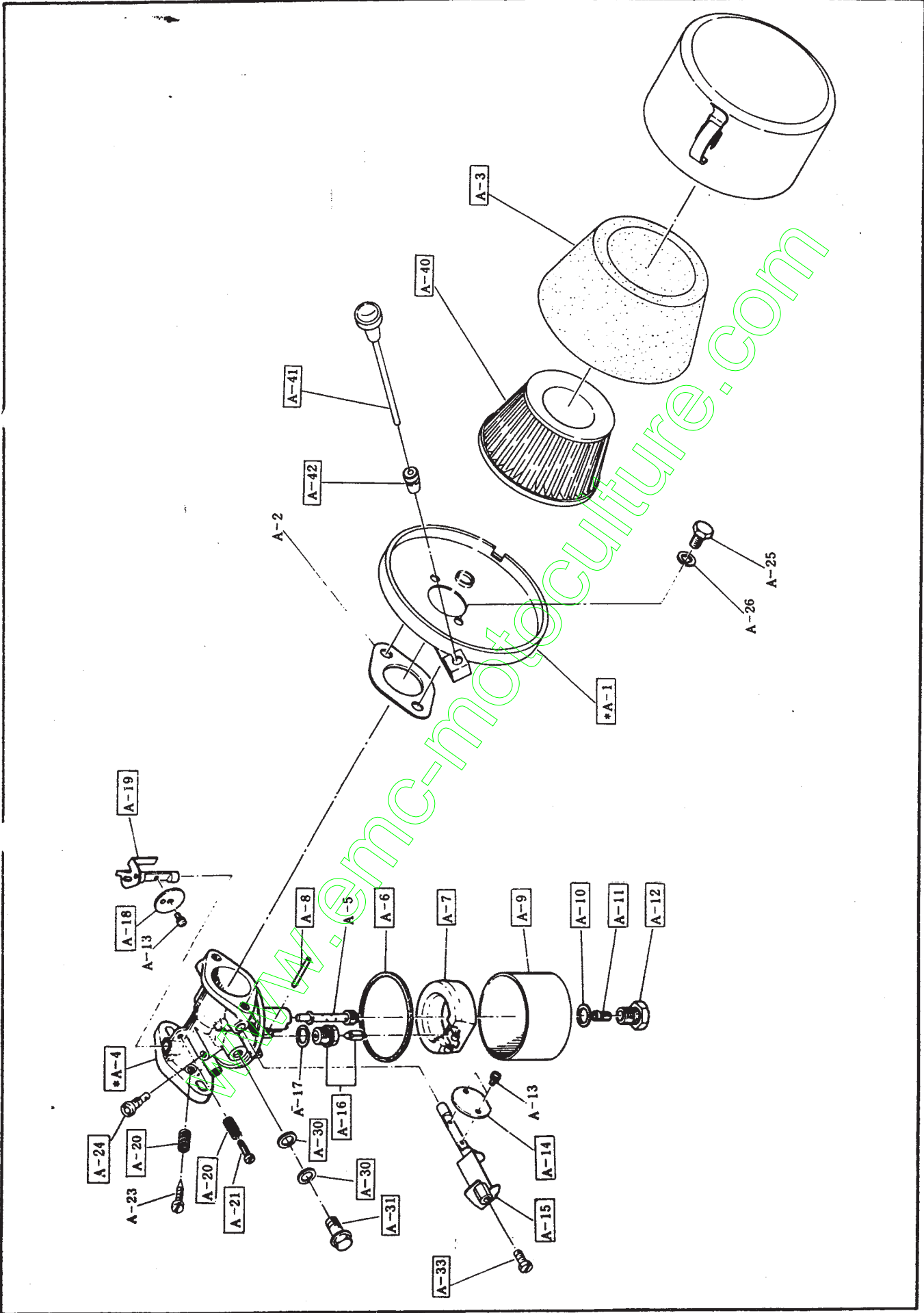
Ref. No.	Part Number	Part Name	Price YEN / Piece	Quantity				Description
* 1	2141 0206 11	Crank case compl.		1				Including 2~8, 142 and 143
* 9	2141 0902 01	Main bearing cover compl.		1				Including 6 and 7
16	2147 5002 03	Gromet		1				
70	2144 3315 01	Speed control compl. 2		1				
* 80	2145 1620 01	Blower housing compl.		1				Including 81
81	2149 1718 03	Label (trade mark)		1				
* 82	2145 2721 01	Cylinder baffle compl.		1				Including 83
83	2149 1810 03	Label (engine name)		1				
84	2145 2619 01	Head cover compl.		1				
86	2143 0304 01	Muffler compl.		1				
87	2143 4220 01	Muffler cover compl.		1				
88	2143 5303 01	Muffler bracket		1				
*104	2146 2602 01	Fuel pipe compl.		1				Including 105
106	2146 0119 01	Fuel tank compl.		1				
130	0655 00005 0	Spark plug cap		1				
144	00166 0520 0	Bolt		1				M5x20
149	00170 0608 0	Bolt (cross-recessed)		6				M6x8
158	00310 0800 0	Washer		3				M8
159	ST50-9117	Label (pointless type)		1				
*D-1	2145 0110 00	Recoil starter ass'y		1				Including D-2~13
300	0420 14001 1	Plug (rubber)		1				
301	0401 10001 0	Plug		1				
302	2142 5001 01	Spacer		1				
303	2144 4203 01	Wire bracket compl.		1				
304	2145 5102 11	Guide plate compl.		1				
305	0100 04001 0	Bolt		1				
306	2054 6003 11	Control spring		1				
307	0732 00113 0	Label (stop switch)		1				
308	2147 9006 01	Clamp compl.		1				
309	2143 5401 01	Heat deflector compl.		1				
310	2143 5410 01	Cover (tail pipe) compl.		1				
311	2145 5103 01	Mud guard compl.		1				

Engine body

EY18-3B(PR18-2A)

Ref. No.	Part Number	Part Name	Price YEN / Piece	Quantity			Description
* 312	2147 0109 00	Magneto ass'y		1			Including 313~316
313	2147 0152 08	Flywheel		1			
314	2147 0135 08	Exciter coil		1			
315	2147 0150 08	Pulser coil		1			
316	2147 0143 18	Lamp coil		1			
317	0230 04002 0	Spacer		2			
318	2147 1201 01	Ignition coil compl.		1			
319	2147 5207 01	Bracket (IG) compl.		1			
320	2067 5501 01	Clamp compl.		1			
321	2147 3105 01	Wire (5) compl.		1			
322	2147 5501 01	Protector (IG coil) compl.		1			
400	00111 0816 0	Bolt & washer ass'y		2			M8x16
401	00111 0820 0	Bolt & washer ass'y		2			M8x20
402	00165 0508 0	Bolt		2			M5x8
403	00310 0400 0	Washer		2			M4
404	00320 0400 0	Spring washer		2			M4
405	00320 0500 0	Spring washer		2			M5
406	00371 1000 0	Gasket		1			
407	00431 0425 0	Screw		2			M4x25
408	00431 0430 0	Screw		1			M4x30
409	00431 0612 0	Screw		1			M6x12
410	00435 0625 0	Screw & washer ass'y		6			M6x25

www.emc-motoculture.com



Carburetor & air cleaner

EY18-3B(PR18-2A)

Ref. No.	Part Number	Part Name	Price YEN Piece	Quantity				Description
* A-1	2143 2613 00	Air cleaner ass'y		1				Including A-2, A-3, A-40~42
A-3	2063 2610 08	Element		1				
* A-4	2146 2302 00	Carburetor ass'y		1				Including A-5~33
A-6	1016 2540 08	Float chamber washer		1				
A-7	2096 2505 08	Float ass'y		1				
A-8	1016 2515 08	Float pin		1				
A-9	1016 2350 08	Float chamber body		1				
A-10	2096 2311 08	Insert washer		1				
A-11	1296 2400 08	Reverse main jet		1				#72.5
A-12	2096 2425 08	Main jet holder		1				
A-14	2066 2527 08	Choke valve		1				
A-15	2066 2522 08	Choke shaft ass'y		1				
A-16	2096 2305 08	Needle valve		1				#2.5
A-18	1016 2535 08	Throttle valve		1				#160
A-19	2146 2531 08	Throttle shaft ass'y		1				
A-20	2096 2445 08	Throttle stop spring		2				
A-21	2096 2352 08	Screw		1				
A-24	2066 2420 08	Pilot jet		1				#42.5
A-30	2076 2345 08	Washer		2				
A-31	2096 2335 08	Banjo bolt		1				
A-33	2056 2360 08	Bolt		1				
A-40	2063 2600 08	Element compl.		1				
A-41	2064 3901 01	Knob compl.		1				
A-42	0241 02001 0	Grommet		1				

www.emc-motoculture.com