

Rider 111 B

Spare parts

Ersatzteile

Pièces détachées

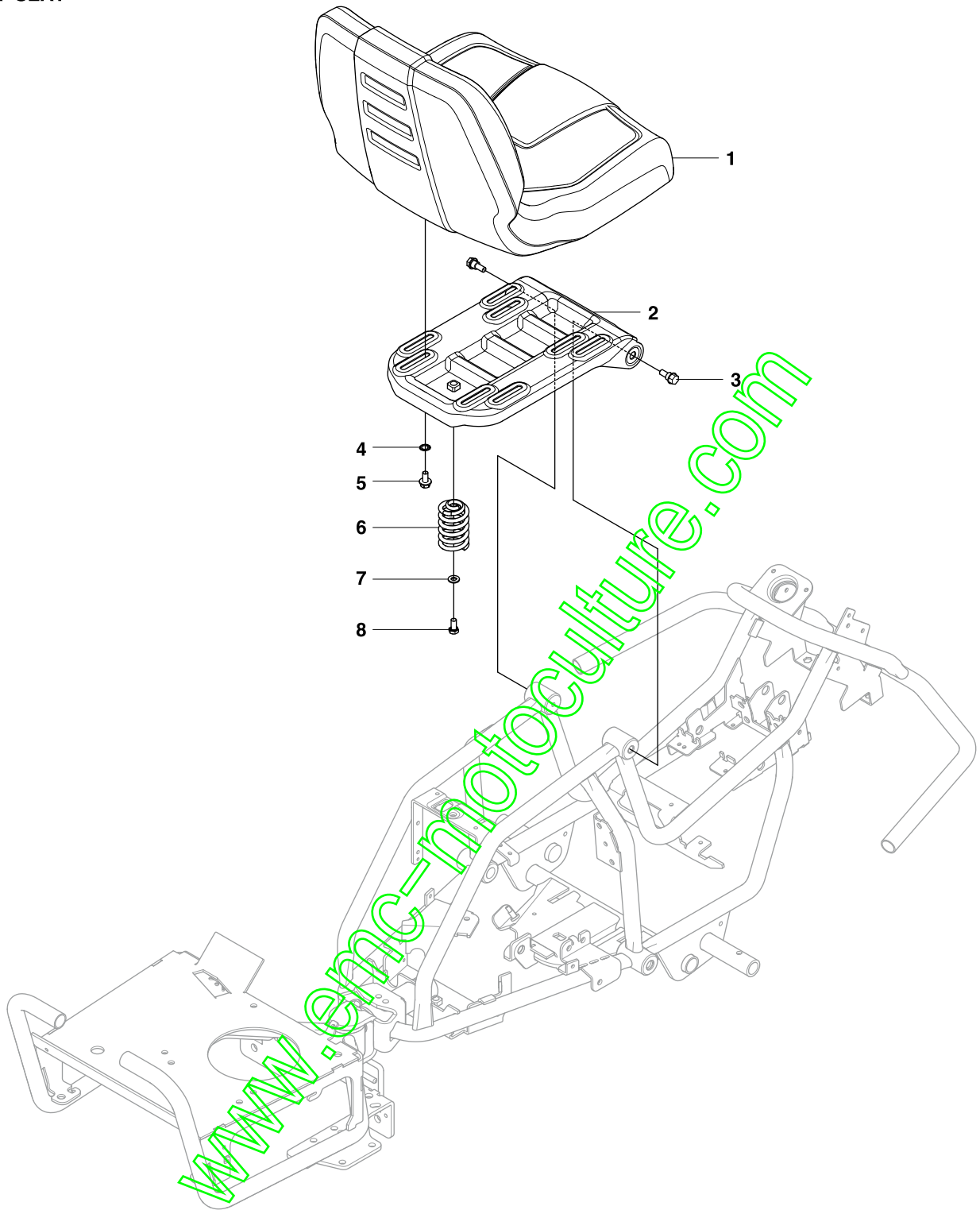
Reserve onderdelen

Repuestos

Reservdelar

www.emc-motoculture.com

A Rider 111 B
SEAT

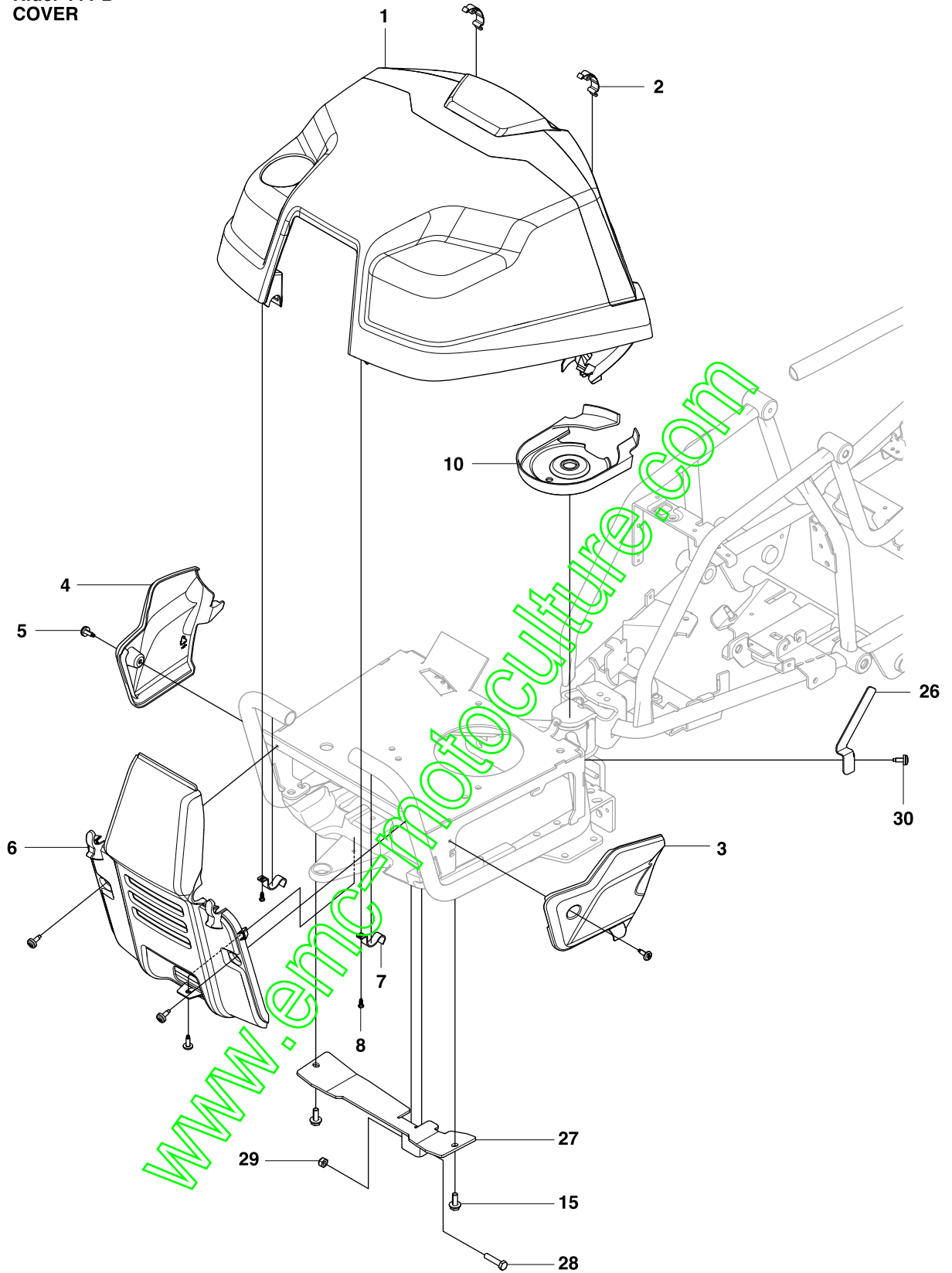


Page A Rider 111 B SEAT				
Position	Article	Quantity	Notes	Kit
1	525 81 48-01	1	SEAT	
2	522 77 51-01	1	SEAT BRACKET	
3	506 59 74-01	2	COLLAR SCREW	
4	735 21 64-00	4	LOCK WASHER	
5	506 57 01-03	4	SCREW EHHFM	
6	506 91 53-01	1	COMPRESSION SPRING	
7	734 11 74-41	1	WASHER	
8	725 24 93-71	1	SCREW EHHM	

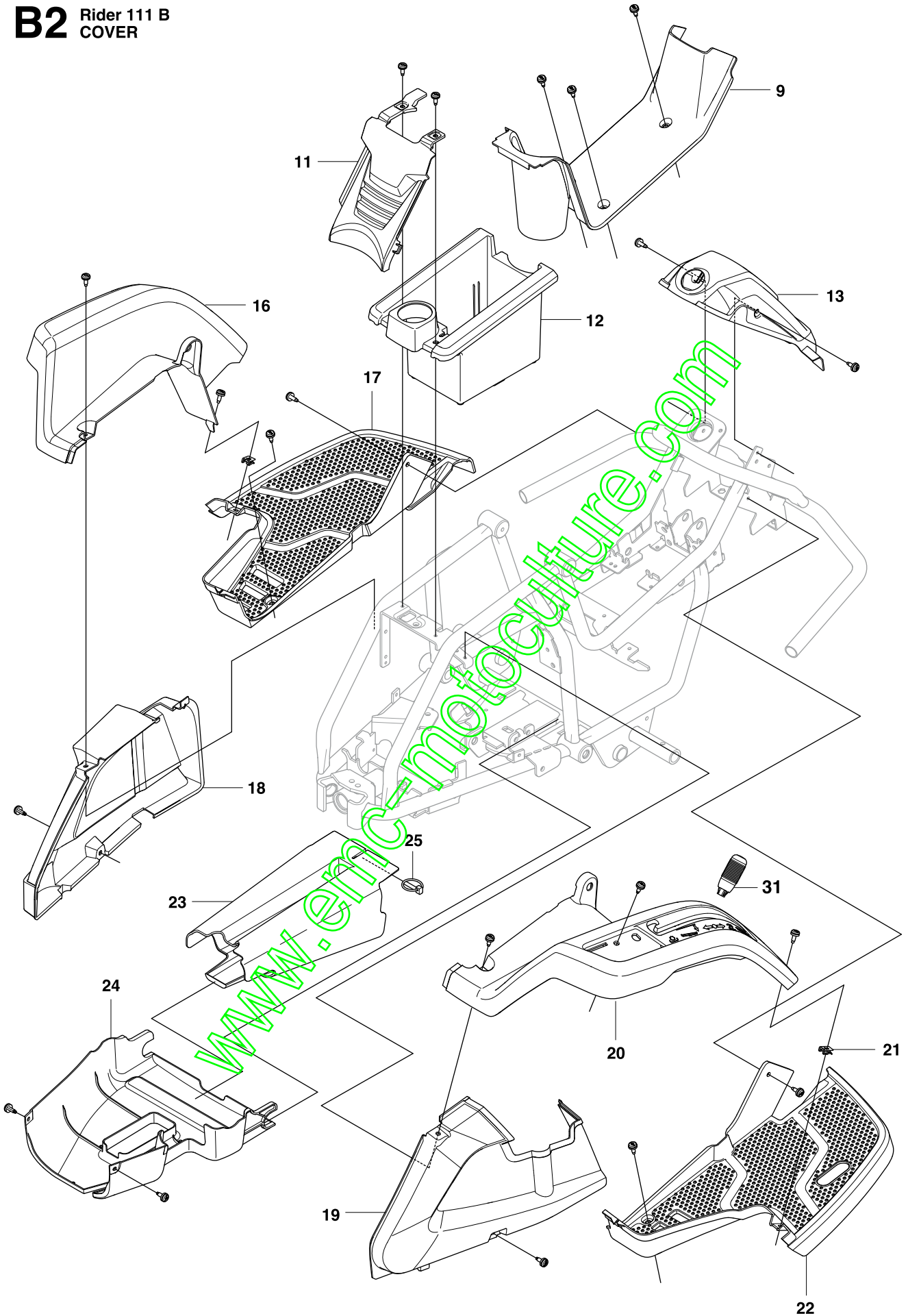
574372501 C

www.emc-motoculture.com

B1 Rider 111 B
COVER



B2 Rider 111 B
COVER

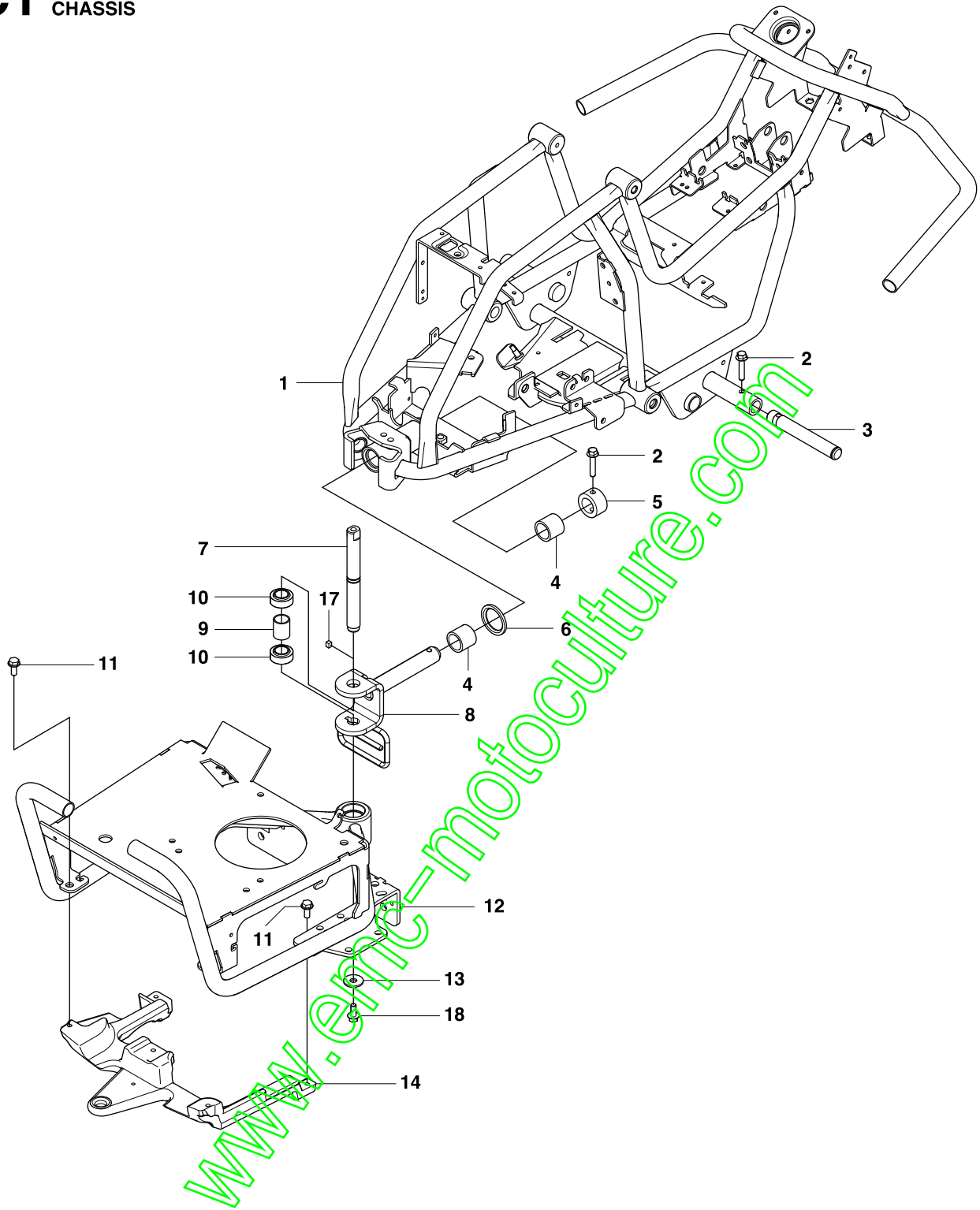


Page B Rider 111 B COVER				
Position	Article	Quantity	Notes	Kit
1	522 82 80-01	1	ENGINE HOOD ASSY	
2	503 89 47-01	2	SNAP	
3	525 49 78-01	1	COVER	
4	525 49 79-01	1	COVER	
5	544 40 05-01	27	SCREW	
6	522 60 21-01	1	SKID PLATE	
7	525 88 11-01	2	SHEET	
8	503 21 74-16	2	SCREW IHSCT	
9	522 60 18-01	1	COVER	
10	522 50 81-01	1	COVER	
11	525 47 79-01	1	COVER	
12	525 47 78-01	1	BATTERY BOX	
13	575 83 92-01	1	COVER	
15	506 57 01-04	2	SCREW EHHFM	
16	521 89 07-01	1	COVER	
17	521 88 91-01	1	FOOT PLATE	
18	522 60 19-01	1	COVER	
19	522 60 20-01	1	COVER	
20	521 88 93-01	1	CONTROL PANEL	
21	535 42 91-01	2	SPRING NUT	
22	521 88 92-01	1	FOOT PLATE	
23	525 39 61-01	1	COVER	
24	575 75 14-01	1	COVER	
25	574 60 08-01	1	SPRINT	
26	575 35 49-01	1	BRACKET	
27	575 45 31-01	1	BRACKET	
28	535 42 38-02	1	SCREW	
29	732 21 18-01	1	LOCK NUT	
30	544 40 05-01	1	SCREW	
31	506 54 20-01	1	HANDLE	

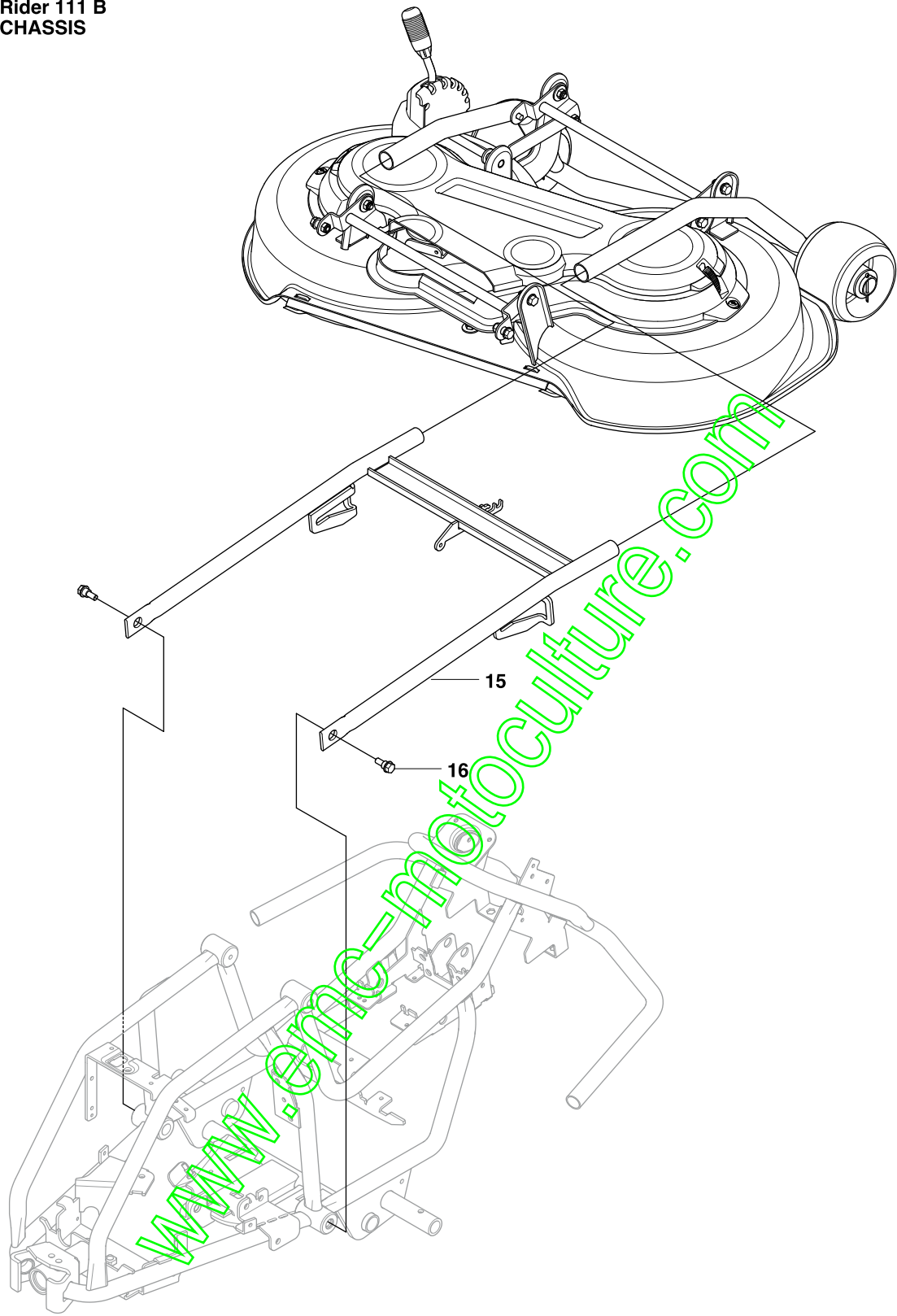
574 37 250E

www.emc-motoculture.com

C1 Rider 111 B
CHASSIS



C2 Rider 111 B
CHASSIS

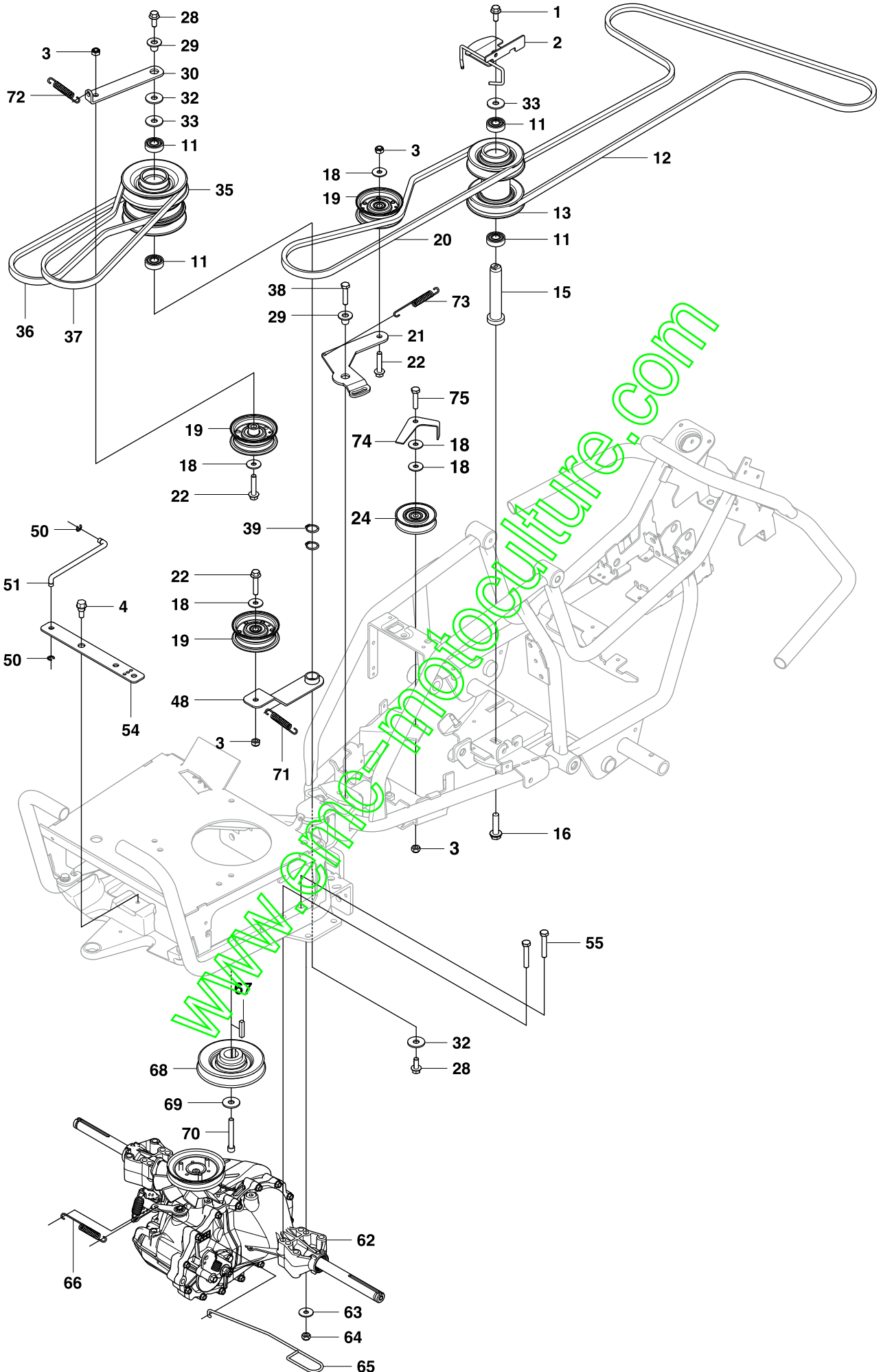


Page C Rider 111 B CHASSIS				
Position	Article	Quantity	Notes	Kit
1	522 41 61-01	1	FRAME	
2	725 24 59-61	3	SCREW EHHF	
3	535 47 08-01	2	WHEEL AXLE	
4	506 98 61-01	2	GLIDLAGER	
5	522 42 52-01	1	STOP SLEEVE	
6	522 42 53-01	1	SPACER	
7	577 67 48-01	1	SHAFT	
8	577 70 50-01	1	SWING AXLE	
9	522 42 45-01	1	SLEEVE	
10	574 36 85-01	2	BEARING	
11	506 57 01-04	4	SCREW EHHFM	
12	522 42 31-01	1	FRAME	
13	544 22 16-01	1	WASHER	
14	525 35 23-01	1	COUNTERWEIGHT	
15	522 45 15-01	1	EQUIPMENT FRAME	
16	506 89 58-01	2	COLLAR SCREW	
17	577 70 89-01	1	KEY	
18	577 21 65-01	1	SCREW	

57437 1001 D

www.emc-motoculture.com

D Rider 111 B TRANSMISSION



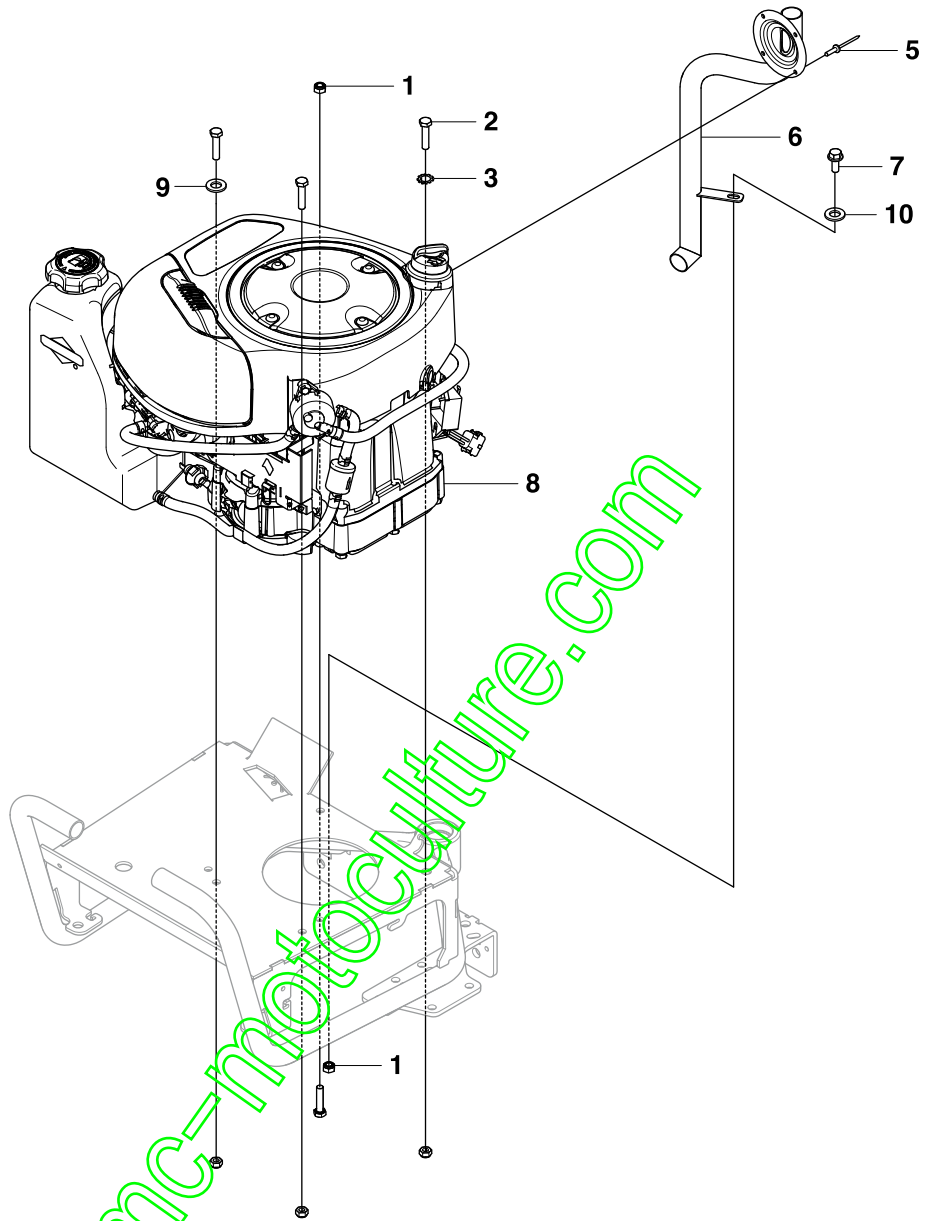
www.emc-motoculture.com

Page D Rider 111 B TRANSMISSION				
Position	Article	Quantity	Notes	Kit
1	506 57 01-03	1	SCREW	
2	577 59 21-01	1	BRACKET ASSY	
3	732 21 18-01	4	LOCK NUT	
11	738 21 04-04	4	BALL BEARING	
12	506 77 58-01	1	DRIVE BELT	
13	574 25 95-01	1	PULLEY	
15	574 25 98-01	1	SHAFT	
16	506 67 54-02	1	SCREW	
18	734 11 64-41	5	WASHER	
19	539 91 90-78	3	PULLEY	
20	575 22 55-01	1	BELT	
21	522 60 29-01	1	BELT TENSIONER	
22	725 24 59-51	3	SCREW EHHM	
24	506 94 69-01	1	BELT TENSIONER WHEEL	
27	544 40 05-01	1	SCREW	
28	506 57 01-04	2	SCREW EHHFM	
29	574 87 41-01	2	WASHER	
30	522 83 16-01	1	BRACKET	
32	734 11 74-41	2	WASHER	
33	506 50 48-05	2	WASHER	
35	525 40 39-01	1	PULLEY	
36	575 22 57-01	1	BELT	
37	575 22 56-01	1	BELT	
38	506 57 01-05	1	SCREW EHHFM	
39	735 31 22-00	2	CIRCLIP	
48	574 41 19-01	1	BRACKET ASSY	
50	735 31 10-20	2	E-CLIP	
51	525 40 81-01	1	ROD	
54	522 82 32-01	1	LINK ARM	
55	725 24 66-51	4	SCREW	
62	574 44 91-01	1	TRANSMISSION	
63	734 11 64-01	4	WASHER	
64	731 23 18-01	4	NUT	
65	525 39 19-01	1	ARM	
66	506 83 43-01	1	SPRING	
67	506 55 59-02	1	WEDGE	
68	522 82 76-01	1	PULLEY	
69	506 59 75-01	1	WASHER	
70	506 55 60-02	1	INSEX 7/16-20 UNFX38	
71	574 50 62-01	1	SPRING	
72	574 50 61-01	1	SPRING	
73	575 56 72-01	1	SPRING	
74	577 41 85-01	1	BRACKET BELT GUIDE	
75	725 24 57-51	1	SCREW	

574 37 20 02 E

www.enig-robotics.com

E Rider 111 B
ENGINE

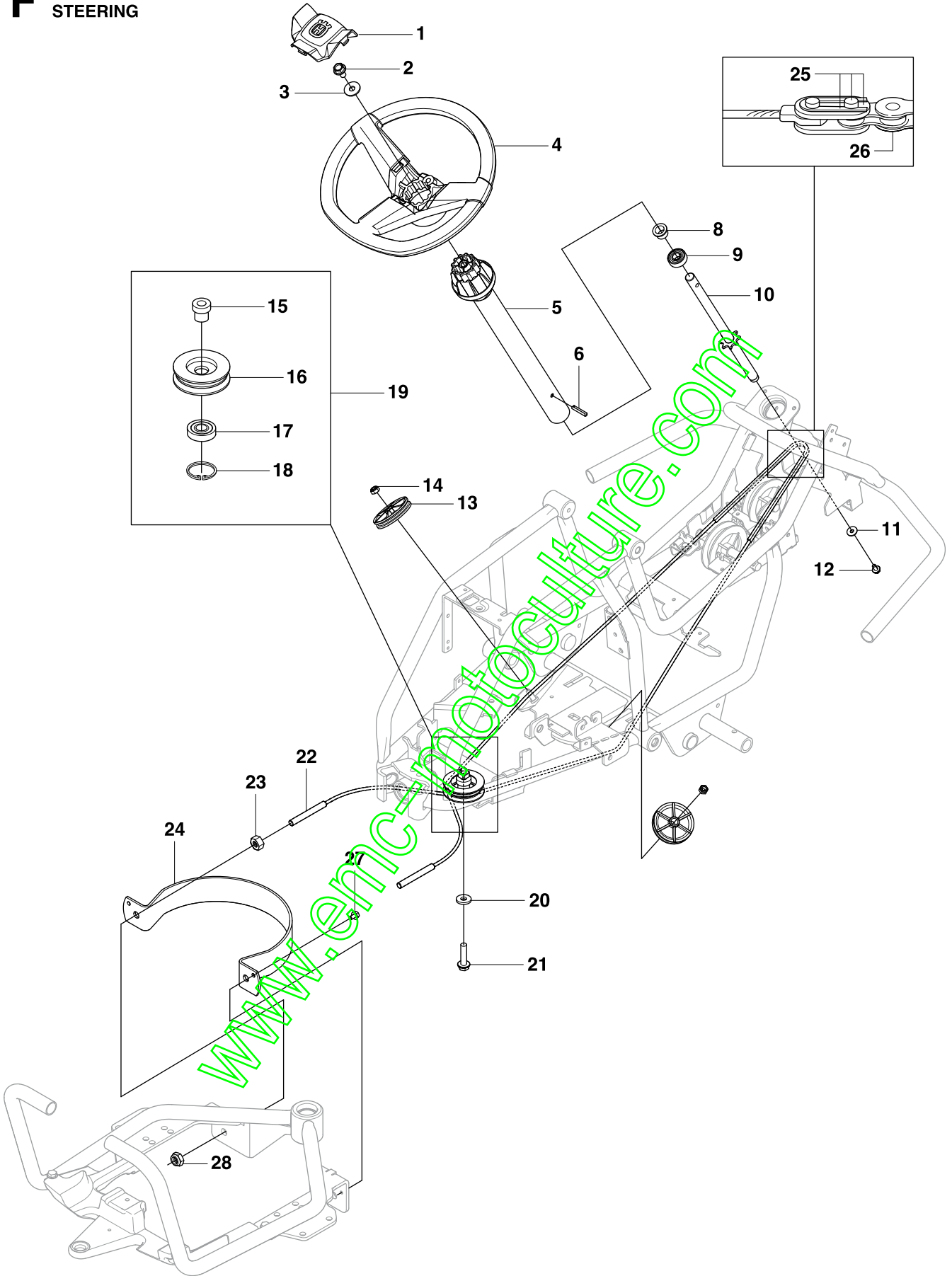


Page E Rider 111 B ENGINE				
Position	Article	Quantity	Notes	Kit
1	732 21 18-01	5	LOCK NUT	
2	725 24 57-51	4	SCREW	
3	735 21 64-00	1	LOCK WASHER	
5	722 79 23-09	4	RIVET	
6	522 60 34-01	1	EXHAUST PIPE ASSY	
7	506 57 01-04	1	SCREW EHHFM	
8	577 44 54-01	1	ENGINE	
9	734 11 64-01	3	WASHER	
10	734 11 64-41	1	WASHER	

57437 1402 D

www.emc-motoculture.com

F Rider 111 B
STEERING

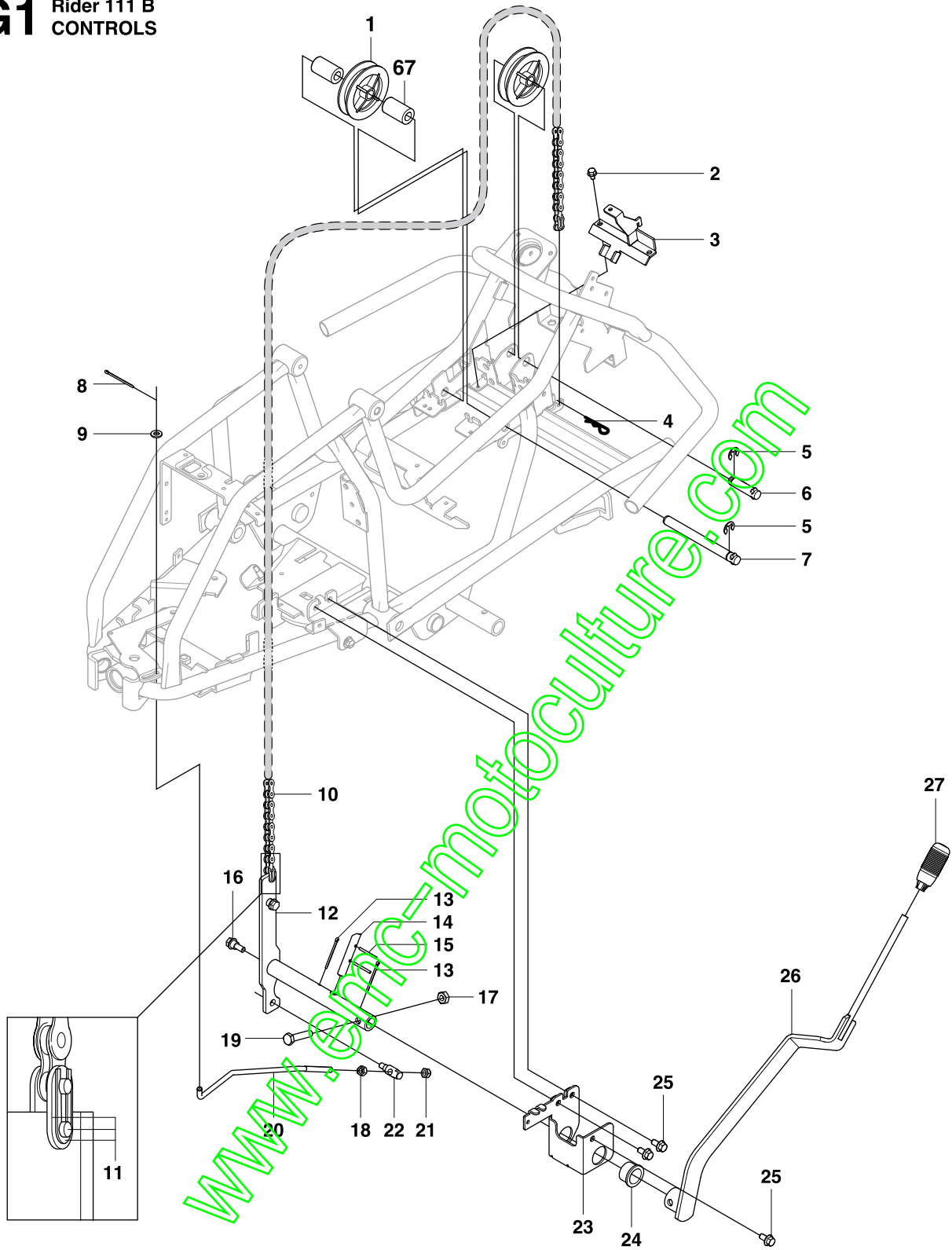


Page F Rider 111 B STEERING				
Position	Article	Quantity	Notes	Kit
1	532 41 59-87	1	KNOB	
2	725 24 97-51	1	SCREW	
3	574 37 92-01	1	WASHER	
4	532 41 64-80	1	STEERING WHEEL	
5	525 39 80-01	1	STEERING SYSTEM	
6	721 43 47-01	1	SPRING PIN	
8	506 88 78-01	1	SPACER	
9	738 21 04-04	1	BALL BEARING	
10	575 63 24-01	1	STEERING ROD	
11	734 11 54-41	1	WASHER	
12	535 47 52-12	1	SCREW EHHFM	
13	575 58 58-01	2	WHEEL	
14	732 21 16-01	2	NUT	
15	506 50 08-02	1	BUSHING	
16	506 50 07-01	1	BARRING WHEEL	
17	738 22 04-19	1	BALL BEARING	
18	735 31 40-10	1	CIRCLIP	
19	506 50 09-02	1	BARRING WHEEL	
20	734 11 74-41	1	WASHER	
21	506 67 54-02	1	SCREW	
22	577 19 99-01	2	WIRE ASSY	
23	731 23 20-51	2	NUT	
24	525 40 43-01	1	GUIDE RAIL	
25	506 55 47-01	2	RAK KOPPLANK	
26	506 55 46-01	1	CHAIN	
27	725 23 68-61	2	SCREW EHHF	
28	732 21 20-51	2	NUT	

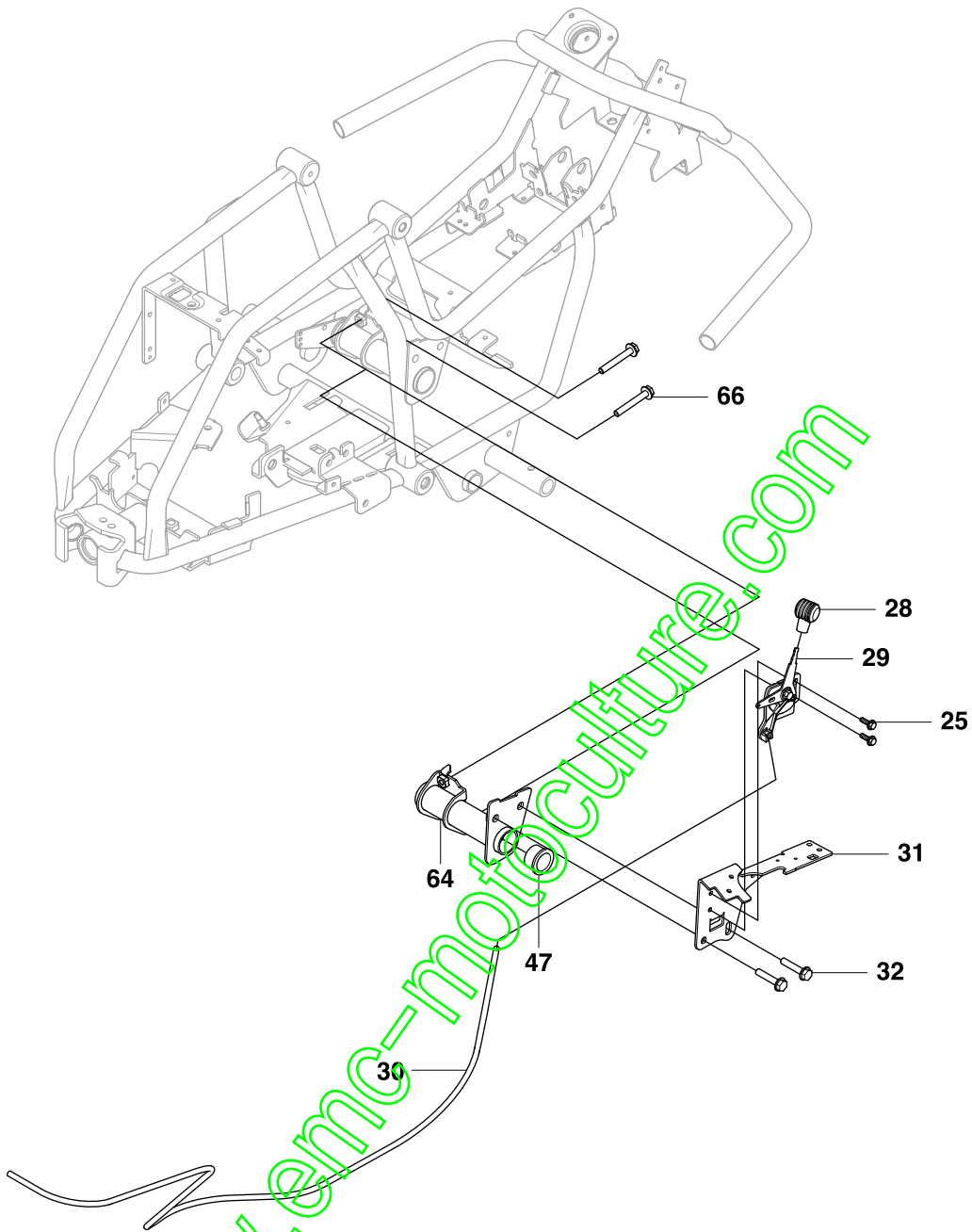
574372501E

www.emc-motoculture.com

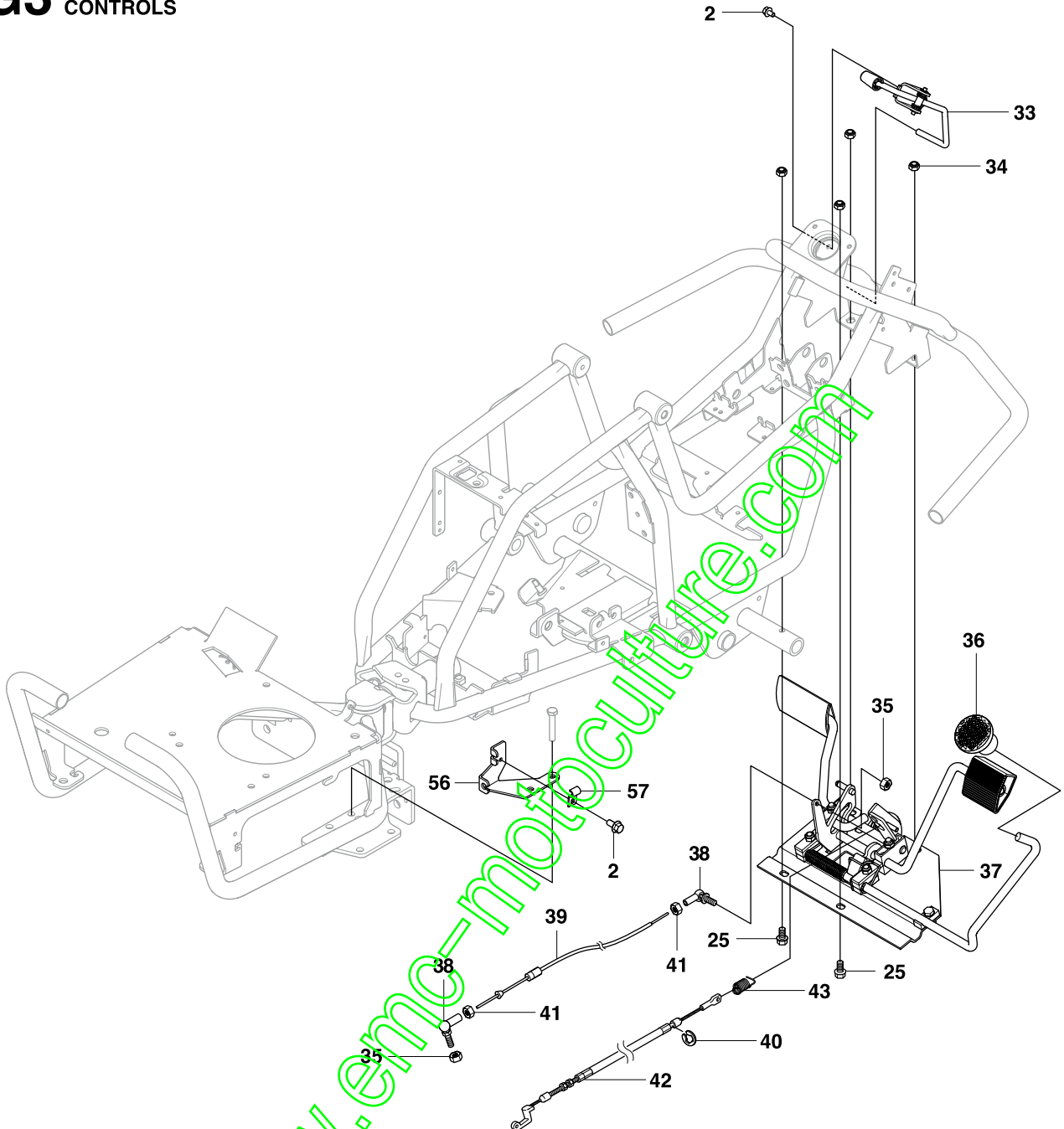
G1 Rider 111 B CONTROLS



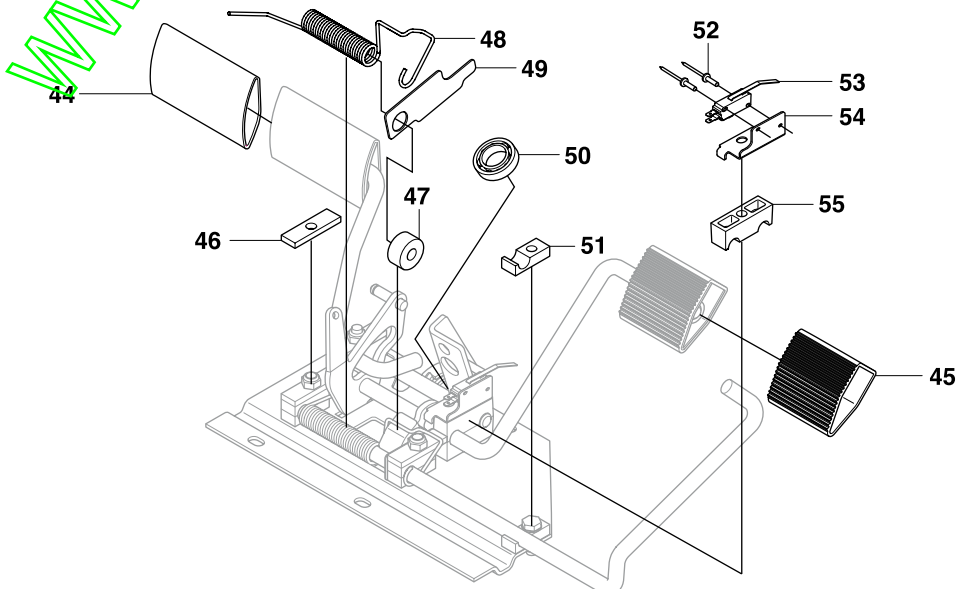
G2 Rider 111 B
CONTROLS



G3 Rider 111 B CONTROLS



PEDALS

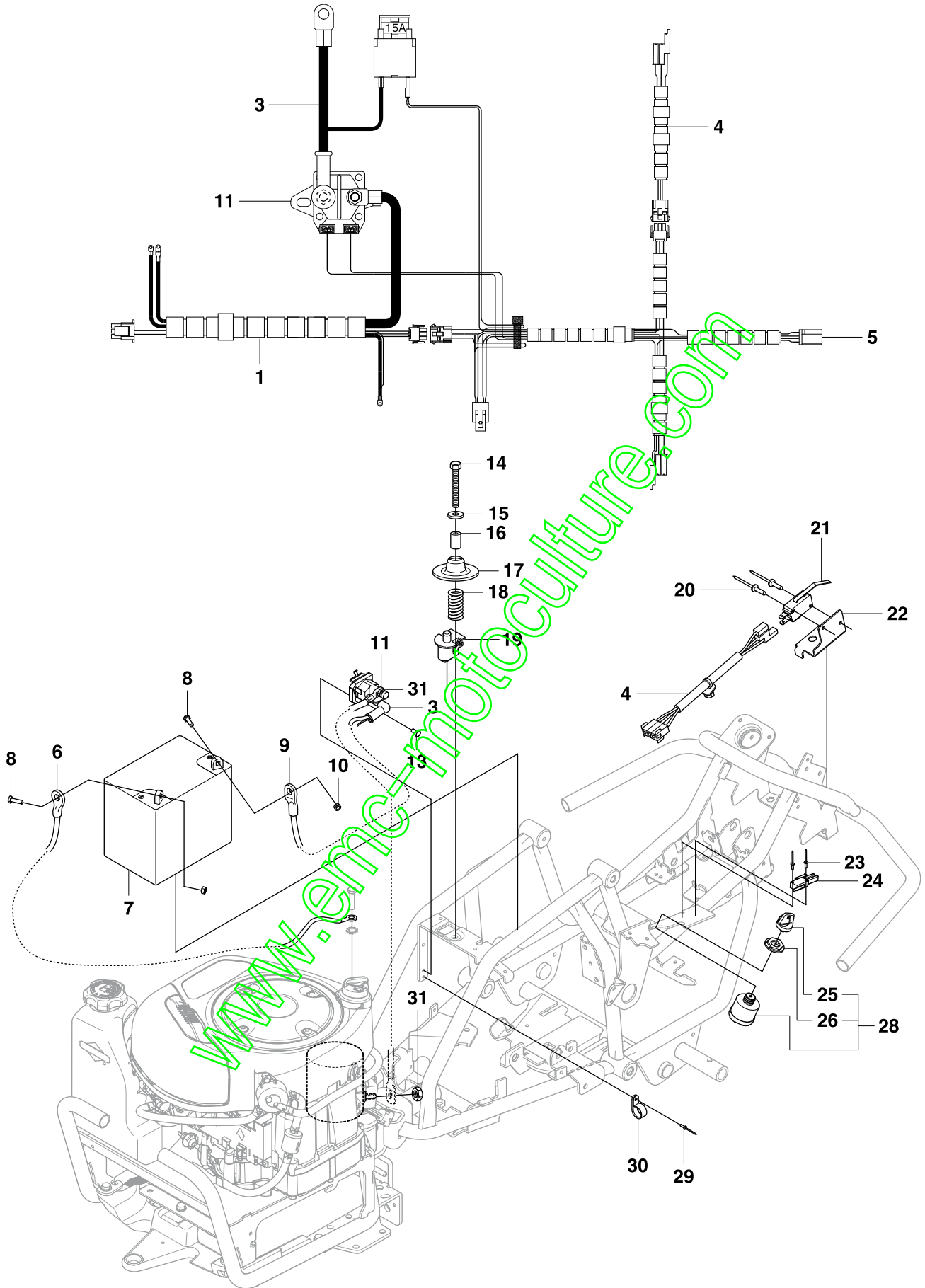


Page G Rider 111 B CONTROLS

5743246C

Position	Article	Quantity	Notes	Kit
1	506 90 56-01	2	OFFSET PULLEY	
2	725 23 64-61	7	SCREW EHHF	
3	574 31 58-01	1	BRACKET	
4	721 68 02-51	1	HAIR PIN COTTER	
5	735 31 18-20	2	E-CLIP	
6	525 40 45-01	1	SHAFT	
7	525 40 44-01	1	SHAFT	
8	721 61 83-01	1	SAXSPRINT 3.2X25	
9	734 11 64-01	2	WASHER	
10	506 55 46-11	1	CHAIN	
11	506 55 47-01	1	RAK KOPPL.LÄNK	
12	522 56 02-02	1	LEVER ASSY	
13	721 61 87-01	1	SAXPINNE SP 3.2X40	
14	506 90 53-01	1	PIN	
15	721 12 59-30	1	PIN	
16	506 59 74-01	1	SCREW	
17	732 21 20-51	1	SCREW EHHM	
18	731 23 18-01	1	NUT	
19	725 25 00-51	1	SCREW EHHM	
20	522 56 01-01	1	ROD	
21	732 21 18-01	1	LOCK NUT	
22	525 49 13-01	1	JOINT	
23	525 40 47-01	1	BRACKET ASSY	
24	506 55 65-01	1	BEARING	
25	506 57 01-03	10	SCREW EHHM	
26	522 50 83-01	1	LEVER	
27	506 54 20-01	1	HANDLE	
28	506 88 91-01	1	KNOB	
29	522 50 59-01	1	THROTTLE CONTROL	
30	544 30 17-04	1	WIRE	
31	575 24 03-01	1	SHEET	
32	506 57 01-04	2	SCREW	
33	523 34 60-01	1	LOCKING LEVER	
34	506 91 62-01	4	BLIND RIVET NUT	
35	731 23 14-01	2	NUT	
36	535 47 37-01	1	KNOB	
37	544 12 60-01	1	PEDAL PLATE ASSY	
38	506 55 73-01	2	VINKELL.AS8 DIN71802	
39	574 41 11-05	1	CONTROL CABLE	
40	735 31 09-20	1	E-CLIP	
41	732 21 14-01	2	LOCK NUT	
42	574 40 76-01	1	WIRE	
43	575 35 52-01	1	SPRING	
44	535 47 88-02	1	PEDAL RUBBER	
45	535 47 88-01	1	PEDAL RUBBER	
46	535 48 10-01	3	REINFORCEMENT PLATE	
47	535 48 02-01	1	ROLLER	
48	535 48 07-01	1	SPRING	
49	535 48 06-01	1	PROTECTIVE PLATE	
50	738 21 02-04	1	BALL BEARING	
51	535 48 09-01	5	BEARING SUPPORT	
52	544 44 07-01	2	RIVET	
53	574 31 61-01	1	SWITCH	
54	544 41 57-01	1	BRACKET	
55	535 48 08-01	4	BEARING SUPPORT	
56	522 82 31-01	1	WIRE HOLDER	
57	506 56 65-01	2	CLIP	
64	574 36 97-01	1	BRACKET	
66	725 24 60-71	1	SCREW	
67	576 46 82-01	2	SLEEVE	

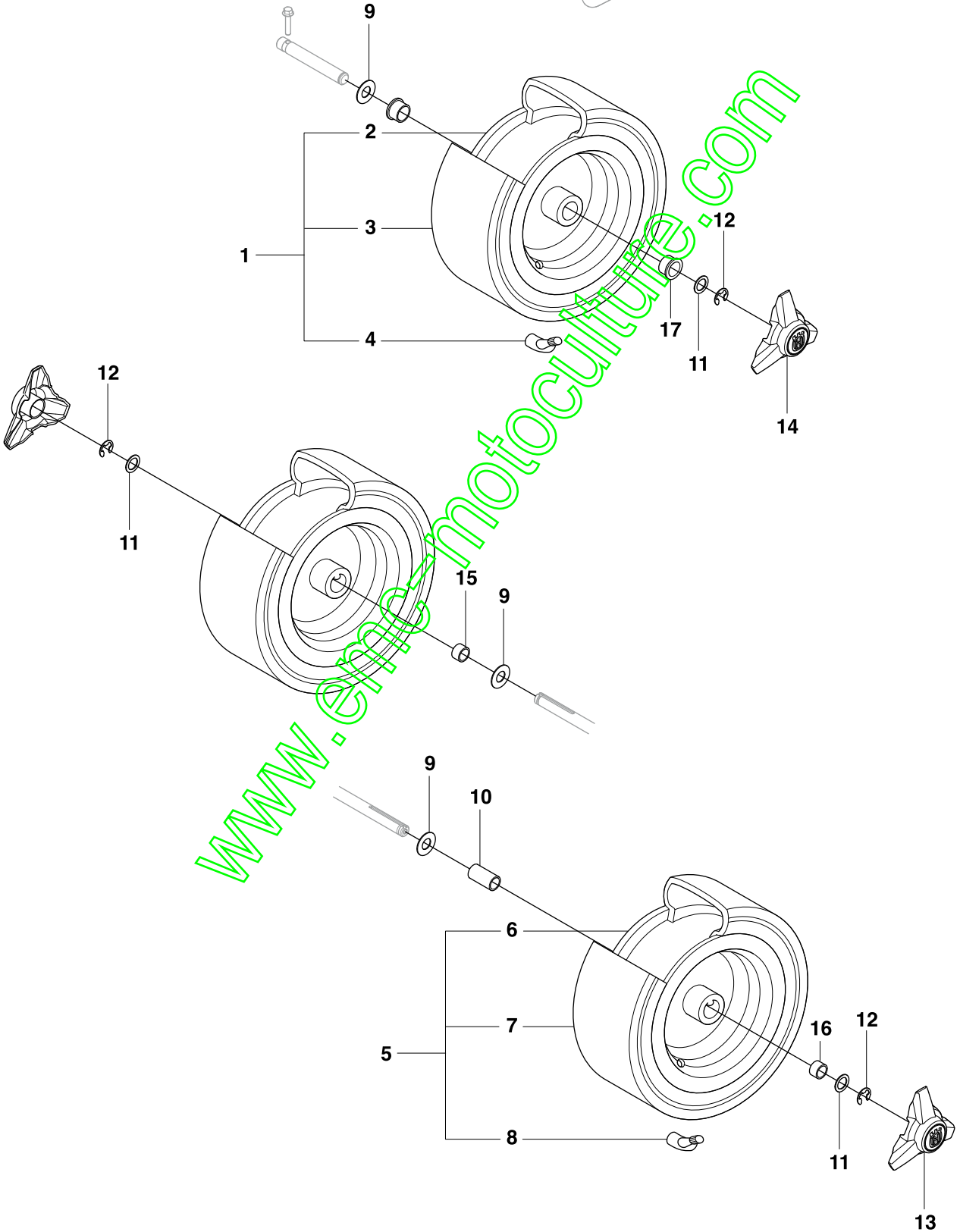
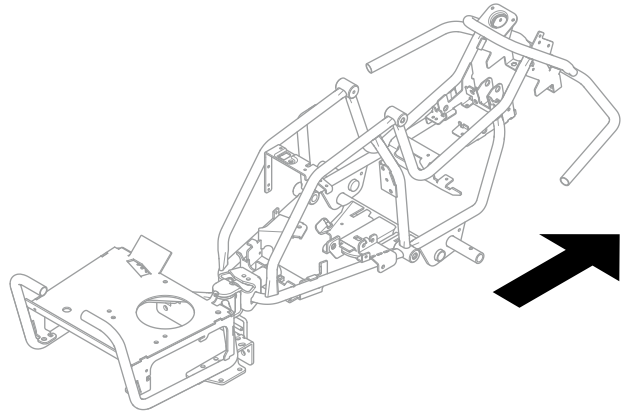
H Rider 111 B
ELECTRICAL



Position	Article	Quantity	Notes	Kit
1	574 26 97-01	1	WIRING	
3	574 26 98-01	1	CABLE	
4	574 26 96-01	1	WIRING	
5	574 26 95-01	1	WIRING	
7	510 13 85-01	1	BATTERY	
8	522 62 21-01	2	SCREW EHHM	
10	522 62 43-01	2	NUT	
11	544 43 98-01	1	RELAY	
13	725 23 64-61	1	SCREW EHHF	
14	725 24 60-51	1	SCREW EHHM	
16	506 90 99-02	1	SPACER TUBE	
17	506 90 97-01	1	SPRING WASHER	
18	544 44 12-01	1	SPRING	
19	506 90 96-01	1	SWITCH	
20	544 44 07-01	2	RIVET	
21	574 31 61-01	1	SWITCH	
22	544 41 57-01	1	BRACKET	
23	544 44 07-01	2	RIVET	
24	574 31 61-01	1	SWITCH	
25	544 44 24-01	1	IGNITION KEY	28
26	544 44 23-01	1	NUT	28
28	544 44 22-01	1	IGNITION SWITCH	
29	722 79 54-02	1	RIVET	
30	575 26 99-01	1	CABLE CLAMP	
31	506 89 98-01	3	NUT	

www.emc-motoculture.com

J Rider 111 B
WHEELS & TIRES

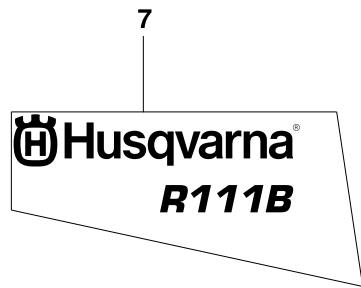
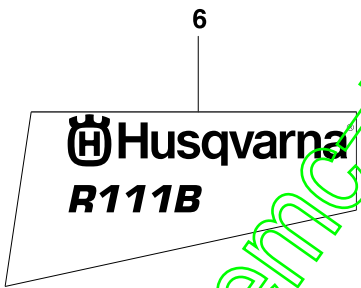
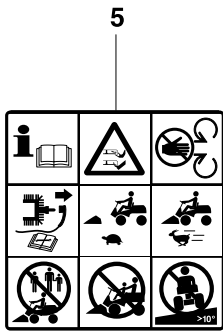
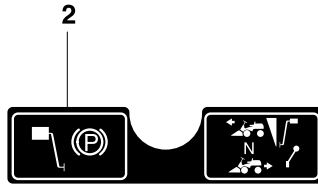
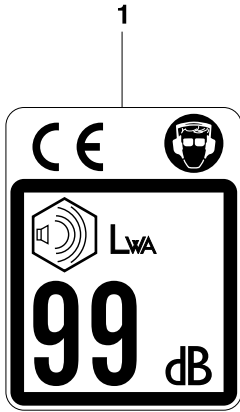


Page J Rider 111 B WHEELS & TIRES				
Position	Article	Quantity	Notes	Kit
1	525 58 47-01	2	WHEEL	
2	573 98 16-01	1	RIM	
3	573 98 14-01	1	TYRE	
4	523 03 47-01	1	VALVE	
5	525 58 49-01	2	WHEEL	
6	573 98 15-01	1	RIM	
7	573 98 14-01	1	TYRE	
8	523 03 47-01	1	VALVE	
9	506 50 48-05	4	WASHER	
10	506 59 62-10	1	SPACING SLEEVE	
11	506 50 48-03	2	WASHER	
12	506 89 90-01	4	LOCK WASHER	
13	544 35 35-03	2	HUB CAP	
14	544 35 35-01	2	HUB CAP	
15	506 59 62-09	1	SPACING SLEEVE	
16	575 29 27-01	1	SPACING SLEEVE	
17	574 67 17-01	2	BEARING	

574 37 21 02 B

www.emc-motoculture.com

K Rider 111 B
DECALS



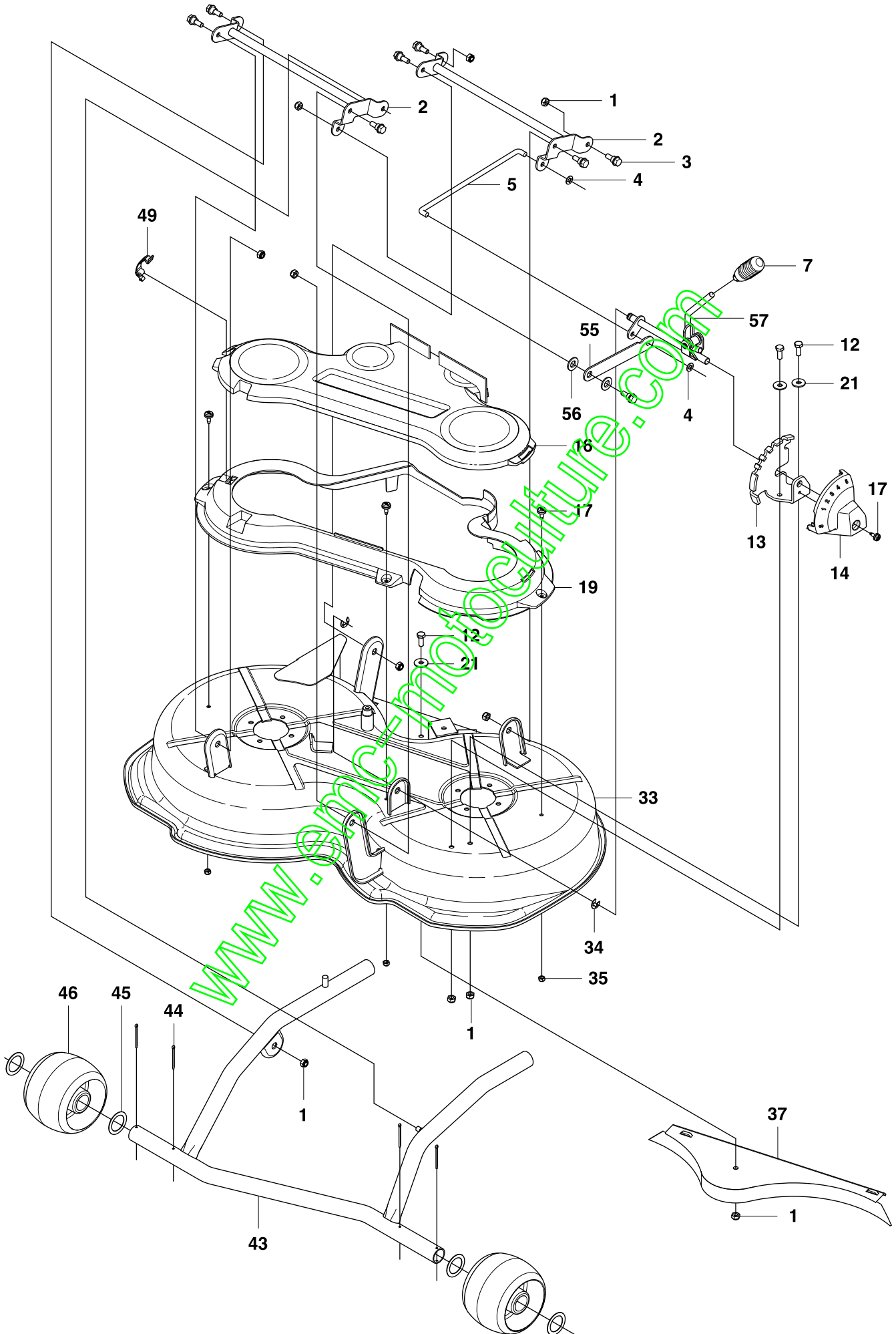
www.enc-motoculture.com

Page K Rider 111 B DECALS				
Position	Article	Quantity	Notes	Kit
1	505 21 77-05	1	LABEL	
2	574 85 46-01	1	DECAL	
3	575 22 27-01	1	DECAL	
4	574 38 21-01	1	LABEL	
5	574 85 48-01	1	DECAL	
6	575 25 30-02	1	DECAL	
7	575 25 30-01	1	DECAL	

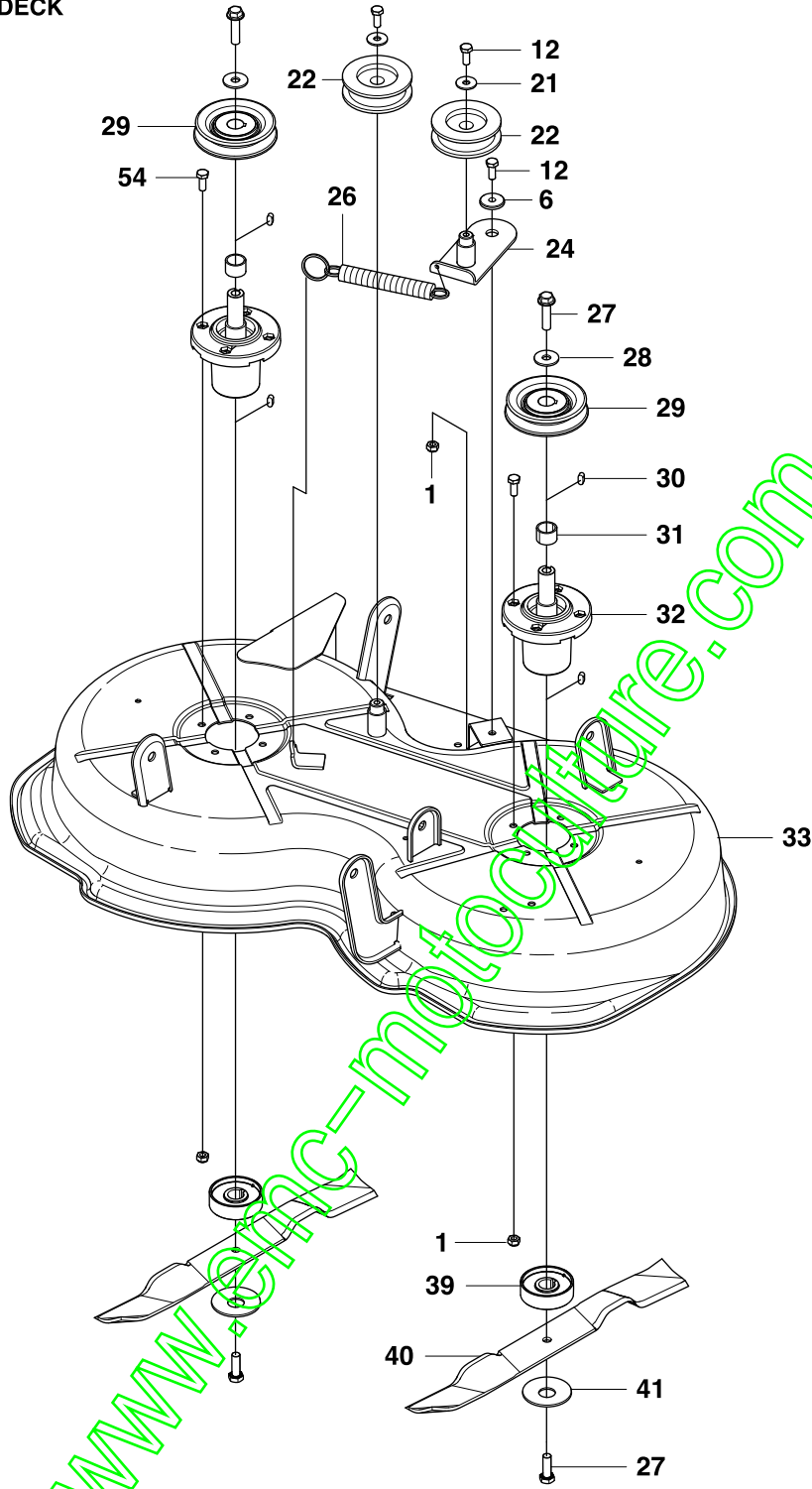
574357102A

www.emc-motoculture.com

L1 Rider 111 B CUTTING DECK



L2 Rider 111 B
CUTTING DECK



20

BioClip® 85

23



Position	Article	Quantity	Notes	Kit
1	732 21 18-01	16	LOCK NUT	
2	522 45 09-01	2	CROSS BAR	
3	506 59 74-01	8	COLLAR SCREW	
4	735 58 52-00	2	LOCK WASHER	
5	522 60 23-01	1	ROD	
6	734 11 74-41	1	WASHER	
7	574 32 88-01	1	HANDLE	
12	725 24 53-71	7	SCREW EHHM	
13	522 52 32-01	1	BRACKET	
14	573 97 18-01	1	COVER	
16	574 17 21-01	1	COVER	
17	544 40 05-01	4	SCREW	
19	574 17 20-01	1	COVER	
20	574 51 00-01	2	DECAL	
21	734 11 64-41	5	WASHER	
22	506 79 32-02	2	BELT TENSIONER WHEEL	
23	574 84 97-01	2	DECAL	
24	573 96 95-01	1	BELT TENSIONER	
26	506 97 68-01	1	SPRING	
27	506 67 54-02	4	SCREW	
28	734 11 77-71	2	WASHER	
29	574 46 07-01	2	PULLEY	
30	506 53 35-01	4	PARALLEL KEY	
31	573 96 65-01	2	TUBE	
32	573 96 86-01	2	BEARING HOUSING ASSY	
33	522 45 00-01	1	CUTTING DECK	
34	735 31 15-20	2	E-CLIP	
35	732 21 16-01	3	NUT	
37	574 04 17-01	1	PLUG	
39	577 79 11-01	2	ADAPTER	
40	522 44 95-03	2	BLADE	
41	506 79 23-03	2	KNIFE PLATE	
43	522 45 19-01	1	EQUIPMENT FRAME	
44	721 61 87-01	4	SAXPINNE SP 3.2X40	
45	575 55 33-01	4	WASHER	
46	522 73 59-01	2	WHEEL	
49	503 89 47-01	1	SNAP	
54	725 24 51-71	8	SCREW EHHM	
55	525 85 57-01	1	ARM	
56	734 11 65-41	2	WASHER	
57	575 80 21-01	1	LEVER ASSY	

www.enclipsculture.com

www.emc-motoculture.com