



PIÈCES DÉTACHÉES

Motoculteurs



SA360F
SA370F
SA560F
SA570F
SA580F

SA360-FE120G-3X
SA360F-FE120G-3X
SA370-FE161G-7X
SA370F-FE161G-7X
SA560FS-FE120G-2X
SA570FS-FE161G-8X
SA580FS-FE221G-5X



Yvan Béal - 21, av. de l'Agriculture - B.P. 16
Z.I. du Brézet - 63014 Clermont-Ferrand Cedex 2
Tél : 04 73 91 93 51 - Télécopie : 04 73 90 23 11
www.yvanbeal.fr - E-mail : info@yvanbeal.fr
R.C.S. Clermont-Fd B 304 973 886 S.A.S. au capital de 612 000 €

1110-097-1000A

03-000165-050215

Directions for use of Parts Catalogue

1. Applicable model of machines

All component and option parts used for SA360,SA370,SA560,SA570,SA580 TILLER are listed in this parts catalogue.

Description of type of machines and particulars

Type of Machines	Engines	Remarks
SA360	FE120G - 3X	
SA360F	FE120G - 3X	With side clutch
SA370	FE161G - 7X	
SA370F	FE161G - 7X	With side clutch
SA560FS	FE120G - 2X	With side clutch and sub change
SA570FS	FE161G - 8X	
SA580FS	FE221G - 5X	

2. Explanation for head paragraph

KEY	PART CODE	DESCRIPTION	QTY	TYPE OF MODEL						I T C	C O L	G R P	REMARKS
				TF15	TF17	TF19							
126	1614-508-200-00	FILTER(SUCTION) ASSY	1	*	*						4E		
127	V721-103-103-50	O-RING	1	*	*								
128	1614-508-260-00	FILTER(SUCTION) ASSY	1	*	*	981- -1799							
129	1614-508-262-00	FILTER(LH)	1	*	*							FIG. 164	
		ASSY	1	*	*						4E	A	
			1	*	*	1- -1999				3			

- ① KEY shows the location of parts diagramed in the illustration.
- ② Parts numbers begin with `V` and `W` are standard parts of the market.
- ③ `LH` and `RH` on the parts name are described against the moving direction of the machine or are described on the condition how to install parts on the machines.

- ④ QTY shows the number of parts to be used for one unit of machine.
 `M` is indicated for parts supplied by a meter long.
 `ℓ` is indicated for parts supplied by liter.
 `AR` is indicated for parts need to be adjusted or regulated.
- ⑤ The following symbol classifies parts to be used for machines.
 `*` means standard parts.
 `T` shows that the parts can be installed as optional parts.
 `R` shows that the parts can be used as applicable parts to replace originally equipped parts.
- ⑥ Serial number : upper row shows the serial number for the first product and lower row for the last product.
 Example : Serial no. 1 through to serial no. 1999.
- ⑦ ITC : Interchangeability
 `1` ...OLD ← NEW
 New parts can be used in place of the old parts.
 `2` ...OLD → NEW
 Old parts can be used in place of the new parts.
 `3` ...OLD ✕ NEW
 Old parts and new parts can not be replaced each other.
- ⑧ COL : Color code
 Color is signified with color code number for colored parts.
 Please see the color list shown in the next page.
- ⑨ GRP : Parts shown in this column can be replaced by SET parts.
 Exsample : Parts marked Ⓐ can be replaced by parts marked Ⓑ, and Ⓓ for Ⓒ, so the rest follow in the same alphabetical order.
- ⑩ Remarks
 * Other maker's part code number is shown in this column.
 * When Fig. No. is shown in the Remark column of SET parts or ASSY parts, each of their component parts are listed in said Fig. No.

3. Color :

The following colors are used for color parts.

COLOR CODE	COLOR	SPRAY TYPE CODE NUMBER	PAINTS 4K DRUM	PAINTS 16K DRUM
0 I	SUPER RED	—————	—————	—————
6 G	SUMMER WHITE	1300-958-001-10	1300-958-003-00	1300-958-004-00
7 F	MIRROR BLACK	1300-954-001-10	1300-954-003-00	1300-954-004-00

NOTE : Color code is signified only for the parts assigned by the maker as color parts.

4. Serial Numbers :

1) For engines serial number is stamped on CRANK CASE COMP, Please see Fig.No.1 – 8.

For serial number of FE221G5X engine, Please see Fig.No.1 – 10.

2) For chassies serial number is shown on the LABEL.

Please see



5. Parts Order

- 1) Parts numbers listed in the parts catalogue are all registered in “ISEKI on-line computer”.
- 2) When you order parts, please make sure of correct numbers.
- 3) When substitute parts is available, the part number ordered will be automatically turned to a new part number.
- 4) Please be sure to use “ISEKI GENUINE PARTS”.

Any other similar parts other than ISEKI parts when used may cause a trouble that makes us unable to repair or guarantee the warrant.

CONTENTS

SA360, 560

エンジン (FE120G-3X, FE120G-2X)

CYLINDER/CRANK CASE SYSTEM	Fig. 1
PISTON/CRANK SHAFT SYSTEM	Fig. 2
VALVE/CAM SHAFT SYSTEM	Fig. 3
OIL SYSTEM	Fig. 4
COOLING SYSTEM (1)	Fig. 5
COOLING SYSTEM (2)	Fig. 6
ELECTRICAL SYSTEM	Fig. 7
CONTROL SYSTEM	Fig. 8
CARBURETOR SYSTEM	Fig. 9
AIR FILTER/MUFFLER SYSTEM (1)	Fig. 10
AIR FILTER/MUFFLER SYSTEM (2)	Fig. 11
FUEL FILTER SYSTEM (1)	Fig. 12
FUEL FILTER SYSTEM (2)	Fig. 13
STARTER SYSTEM	Fig. 14
LABEL	Fig. 15
TOOL	Fig. 16

CONTENTS

SA580

エンジン (FE221G-5X)

CYLINDER/CRANK CASE SYSTEM	Fig. 1
PISTON/CRANK SHAFT SYSTEM	Fig. 2
VALVE/CAM SHAFT SYSTEM	Fig. 3
OIL SYSTEM	Fig. 4
COOLING SYSTEM	Fig. 5
ELECTRICAL SYSTEM	Fig. 6
CONTROL SYSTEM	Fig. 7
CARBURETOR SYSTEM	Fig. 8
AIR FILTER/MUFFLER SYSTEM	Fig. 9
FUEL FILTER SYSTEM	Fig. 10
STARTER SYSTEM	Fig. 11
LABEL	Fig. 12
TOOL	Fig. 13

www.emc-motoculture.com

CONTENTS

SA370, 570

エンジン (FE161G-7X, FE161G-8X)

CYLINDER/CRANK CASE SYSTEM	Fig. 1
PISTON/CRANK SHAFT SYSTEM	Fig. 2
VALVE/CAM SHAFT SYSTEM	Fig. 3
OIL SYSTEM	Fig. 4
COOLING SYSTEM (1)	Fig. 5
COOLING SYSTEM (2)	Fig. 6
ELECTRICAL SYSTEM	Fig. 7
CONTROL SYSTEM	Fig. 8
CARBURETOR SYSTEM	Fig. 9
AIR FILTER/MUFFLER SYSTEM (1)	Fig. 10
AIR FILTER/MUFFLER SYSTEM (2)	Fig. 11
FUEL FILTER SYSTEM (1)	Fig. 12
FUEL FILTER SYSTEM (2)	Fig. 13
STARTER SYSTEM	Fig. 14
LABEL	Fig. 15
TOOL	Fig. 16

CONTENTS

SA360, 370, 560, 570, 580

CHASSIS

FRAME (FRONT) SYSTEM	Fig. 1
FRAME (FRONT) SYSTEM (SA580 TYPE)	Fig. 2
STAND SYSTEM	Fig. 3
ENGINE SYSTEM	Fig. 4
HITCH (REAR) SYSTEM	Fig. 5
PULLEY SYSTEM	Fig. 6
TENSION (55F) SYSTEM (SA560,570 TYPE)	Fig. 7
TENSION (77F) SYSTEM (SA360,370,580 TYPE)	Fig. 8
STOPPER SYSTEM	Fig. 9
CASE (MISSION) SYSTEM (SA360,370 TYPE)	Fig. 10
CASE (MISSION) SYSTEM (F TYPE)	Fig. 11
SHAFT (MAIN) SYSTEM (SA580 TYPE)	Fig. 12
SHAFT (MAIN/J) SYSTEM (SA560,570 TYPE)	Fig. 13
SHAFT (MAIN) SYSTEM (SA360,370 TYPE)	Fig. 14
SHAFT (COUNTER) SYSTEM	Fig. 15
SHAFT (SHIFT,REDUCTION) SYSTEM	Fig. 16
SHAFT (WHEEL) SYSTEM	Fig. 17
SHIFTER (MAIN) SYSTEM	Fig. 18
SHIFTER (SIDE CLUTCH) SYSTEM (F TYPE)	Fig. 19
SHIFTER (SUB) SYSTEM (SA580 TYPE)	Fig. 20
SHIFTER (SUB/J) SYSTEM (SA560,570 TYPE)	Fig. 21
BOSS (FREE WHEEL) SYSTEM (SA360,370 TYPE) (OPTION)	Fig. 22
WHEEL PIPE SYSTEM	Fig. 23
BRACKET (HANDLE) SYSTEM (SA560,570 TYPE)	Fig. 24
BRACKET (HANDLE) SYSTEM (SA580 TYPE)	Fig. 25
BRACKET (HANDLE) SYSTEM (SA360,370 TYPE)	Fig. 26
HANDLE SYSTEM (SA560,570 TYPE)	Fig. 27
HANDLE SYSTEM (SA580 TYPE)	Fig. 28
HANDLE SYSTEM (SA360,370 TYPE)	Fig. 29

HANDLE SYSTEM (SA360F,370F TYPE)	Fig. 30
LEVER (CLUTCH) SYSTEM	Fig. 31
ACCELERATOR (E) SYSTEM	Fig. 32
SHIFT (MAIN) SYSTEM (SA580 TYPE)	Fig. 33
SHIFT (MAIN) SYSTEM	Fig. 34
ADJUST (HANDLE) SYSTEM (SA560,570,580 TYPE)	Fig. 35
ADJUST (HANDLE) SYSTEM (SA360,370 TYPE)	Fig. 36
SHIFT (SIDE CLUTCH/E) SYSTEM (SA370F,560,570,580 TYPE)	Fig. 37
SHIFT (SIDE CLUTCH) SYSTEM (SA360F,370F TYPE)	Fig. 38
GUIDE (SHIFT) SYSTEM	Fig. 39
SHIFT (SUB),HOOD SYSTEM	Fig. 40
FUEL TANK SYSTEM (SA560 TYPE)	Fig. 41
FUEL TANK (55) SYSTEM (SA570 TYPE)	Fig. 42
FUEL TANK (77) SYSTEM (SA580 TYPE)	Fig. 43
COVER (BELT) SYSTEM	Fig. 44
FENDER,ELECTRICAL SYSTEM	Fig. 45
LABEL (MODEL) SYSTEM	Fig. 46
LABEL SYSTEM	Fig. 47
TOOL,MANUAL SYSTEM	Fig. 48

www.emc-motoculture.com

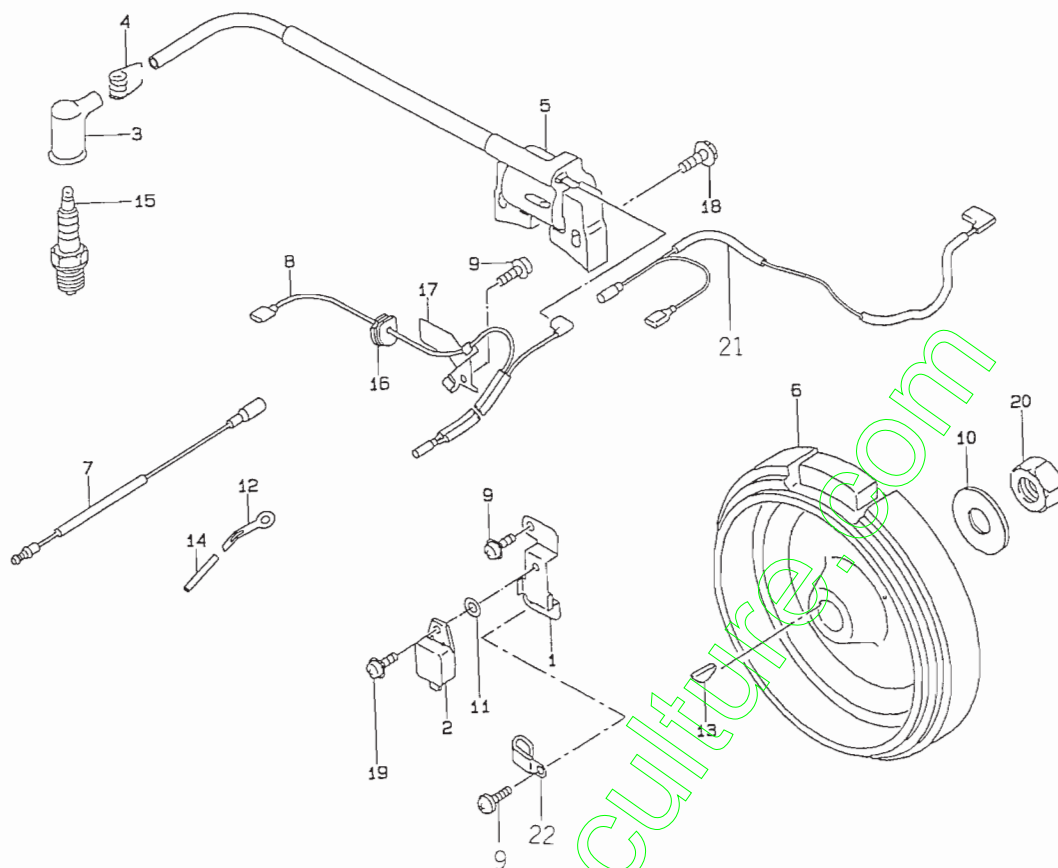
ENGINE

FE120G-2X ... SA560

FE120G-3X ... SA360

www.emc-motocultiva.com

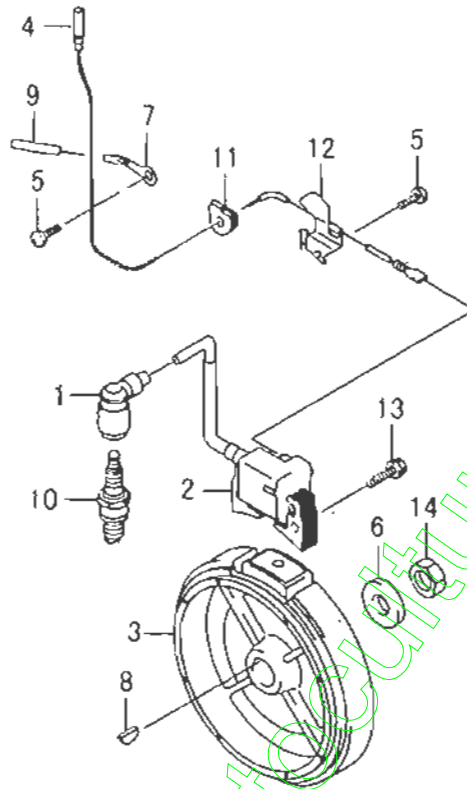
FIG. 7 ELECTRICAL SYSTEM



5209-006

KEY	PART CODE	DESCRIPTION	QTY	TYPE OF MODEL		I T C	C O L	G R P	REMARKS
				FE120G 2X	FE120G 3X				
1	5110 - 462 - 142 - XX	BRACKET	1	*	*				110462142
2	5211 - 192 - 139 - XX	IGNITER	1	*	*				211192139
3	5211 - 302 - 066 - XX	CAP,SPARK PLUG	1	*	*				211302066
4	5172 - 708 - 419 - AX	SPRING	1	*	*				3172708419A
5	5211 - 712 - 188 - XX	IGNITION COIL ASSY	1	*	*				211712188
6	5211 - 942 - 246 - XX	FLYWHEEL COMP	1	*	*				211942246
7	5260 - 112 - 112 - XX	WIRE	1	*	*				260112112
8	5260 - 112 - 287 - XX	WIRE/LEAD	1	*	*				260112287
9	5920 - 092 - 166 - XX	SCREW	3	*	*				920092166
10	5144 - 013 - 482 - AX	WASHER	1	*	*				3144013482A
11	5158 - 016 - 625 - AX	WASHER	1	*	*				3158016625A
12	5920 - 372 - 165 - XX	CLAMP	1	*	*				920372165
13	5920 - 382 - 077 - XX	KEY	1	*	*				920382077
14	5920 - 592 - 156 - XX	TUBE	1	*	*				920592156
15	5920 - 701 - 167 - XX	PLUG	1	*	*				920701167
16	5920 - 712 - 135 - XX	GROMMET	1	*	*				920712135
17	5921 - 702 - 062 - XX	CLAMP	1	*	*				921702062
18	5130 - B60 - 25X - XX	BOLT	2	*	*				130B6025
19	5242 - B04 - 10X - XX	BOLT	1	*	*				242B0410
20	5314 - G14 - 00X - XX	NUT	1	*	*				314G1400
21	5260 - 112 - 270 - XX	WIRE/LEAD	1		*				260112270
22	5920 - 372 - 171 - XX	CLAMP	1		*				920372171

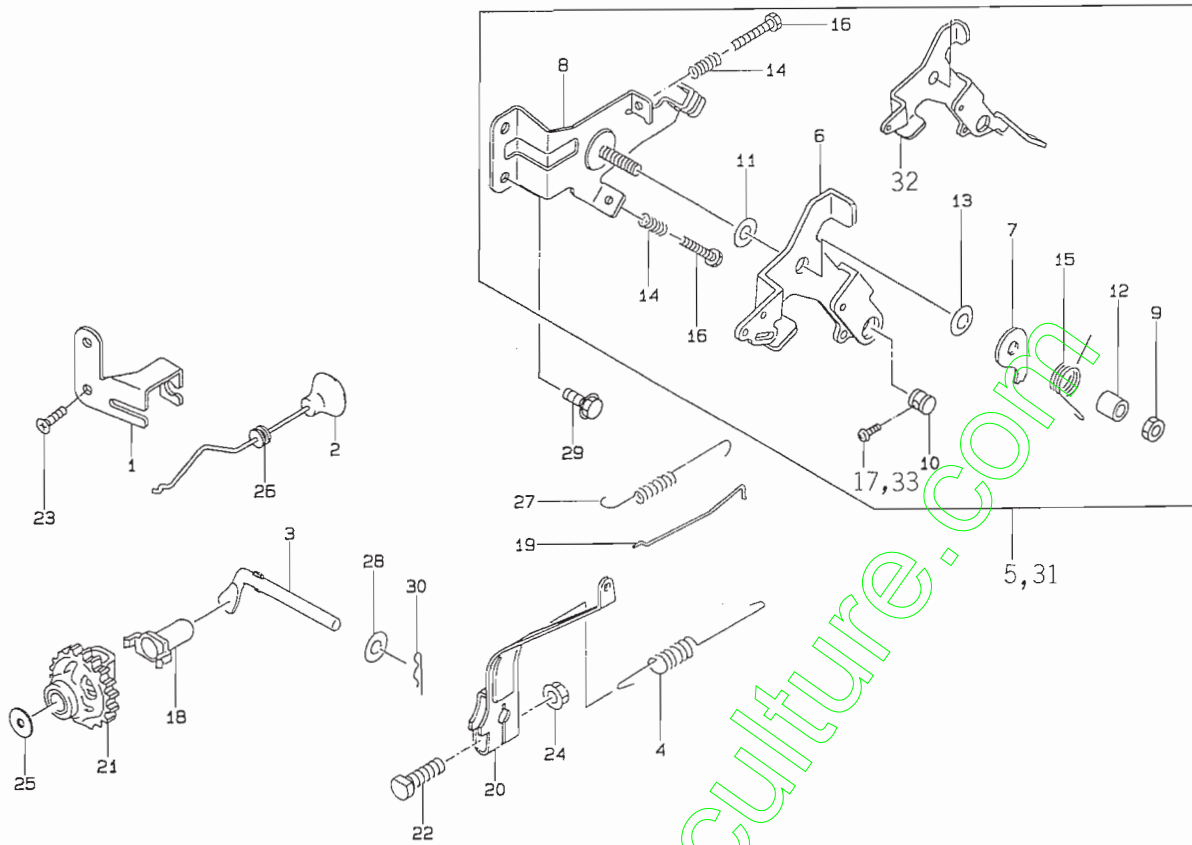
FIG. 7 ELECTRIC-EQUIPMENT



5295-006

KEY	PART CODE	DESCRIPTION	S P C	TYPE OF MODEL	I T C	C O L	G R P	REMARKS
				FE120G CB02				
1	5211-302-060-XX	CAP, SPARK PLUG	*	1				211302060
2	5211-712-219-XX	COIL-ASSY-IGNITION	*	1				211712219
3	5211-942-281-XX	FLYWHEEL-COMP	*	1				211942281
4	5260-112-333-XX	WIRE-LEAD, L-300	*	1				260112333
5	5920-092-308-XX	SCREW	*	2				920092308
6	5920-222-102-XX	WASHER	*	1				920222102
7	5920-372-165-XX	CLAMP	*	1				920372165
8	5920-382-077-XX	KEY	*	1				920382077
9	5920-592-156-XX	TUBE	*	1				920592156
10	5920-702-077-XX	PLUG	*	1				920702077
11	5920-712-159-XX	GROMMET	*	1				920712159
12	5921-702-062-XX	CLAMP	*	1				921702062
13	5130-B06-25X-XX	BOLT-FLANGED	*	2				130B0625
14	5314-G14-00X-XX	NUT	*	1				314G1400

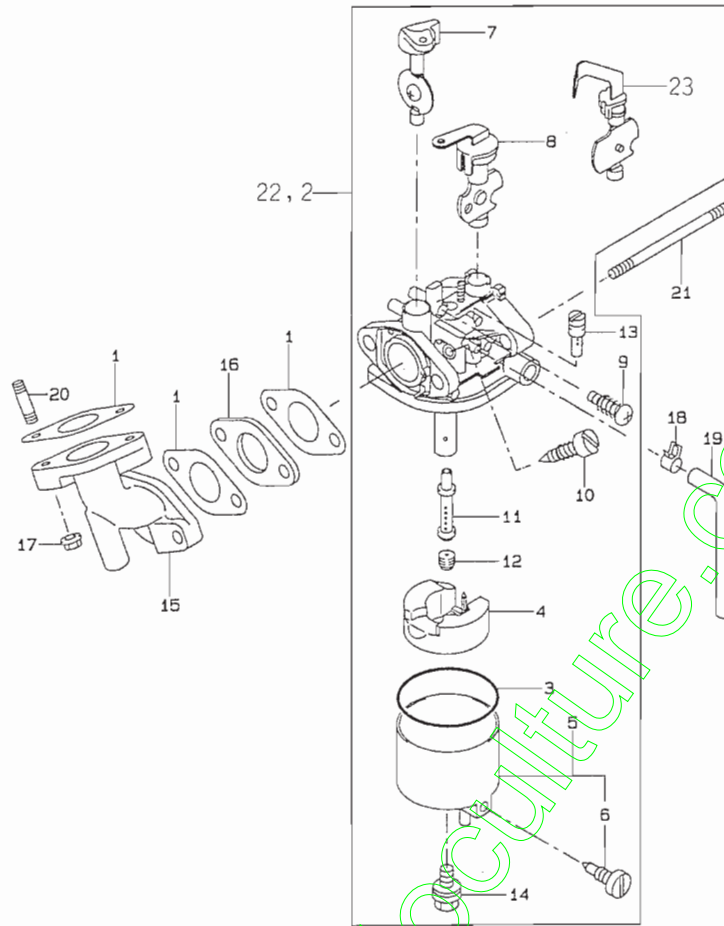
FIG. 8 CONTROL SYSTEM



52C9-C07

KEY	PART CODE	DESCRIPTION	QTY	TYPE OF MODEL		I T C	C O L	G R P	REMARKS
				FE120G 2X	FE120G 3X				
1	5110 - 482 - 023 - XX	BRACKET	1	*					110482023
2	5161 - 692 - 116 - XX	LINK/CHOKE	1	*					161692116
3	5390 - 032 - 074 - XX	ARM/PIVOT	1	*	*				390032074
4	5391 - 292 - 052 - XX	SPRING/GOVERNOR	1	*	*				391292052
5	5391 - 802 - 792 - XX	PANEL/CONTROL ASSY	1	*					391802792
6	5131 - 682 - 349 - XX	LEVER	1	*					131682349
7	5131 - 832 - 371 - XX	PLATE	1	*	*				131832371
8	5592 - 262 - 252 - XX	PANEL/CONTROL	1	*	*				592262252
9	5144 - 015 - 385 - AX	NUT	1	*	*				3144015385A
10	5920 - 152 - 120 - XX	NUT	1	*	*				920152120
11	5144 - 015 - 383 - AX	WASHER	1	*	*				3144015383A
12	5920 - 262 - 304 - XX	SPACER	1	*	*				920262304
13	5144 - 015 - 388 - AX	SPRING	1	*	*				3144015388A
14	5921 - 442 - 266 - XX	SPRING	2	*	*				921442266
15	5921 - 442 - 270 - XX	SPRING	1	*	*				921442270
16	5921 - 502 - 227 - XX	BOLT	2	*	*				921502227
17	5214 - B04 - 08X - XX	SCREW M4X8	1	*					214B0408
18	5144 - 015 - 121 - BX	SLEEVE,GOVERNOR	1	*	*				3144015121B
19	5490 - 462 - 098 - XX	ROD/GOVERNOR	1	*	*				490462098
20	5491 - 032 - 124 - XX	ARM/GOVERNOR	1	*	*				491032124
21	5491 - 102 - 076 - XX	GOVERNOR - ASSY	1	*	*				491102076
22	5920 - 022 - 269 - XX	BOLT	1	*	*				920022269
23	5920 - 092 - 308 - XX	SCREW	2	*					920092308
24	5920 - 151 - 193 - XX	NUT	1	*	*				920151193
25	5144 - 015 - 135 - AX	WASHER	1	*	*				3144015135A

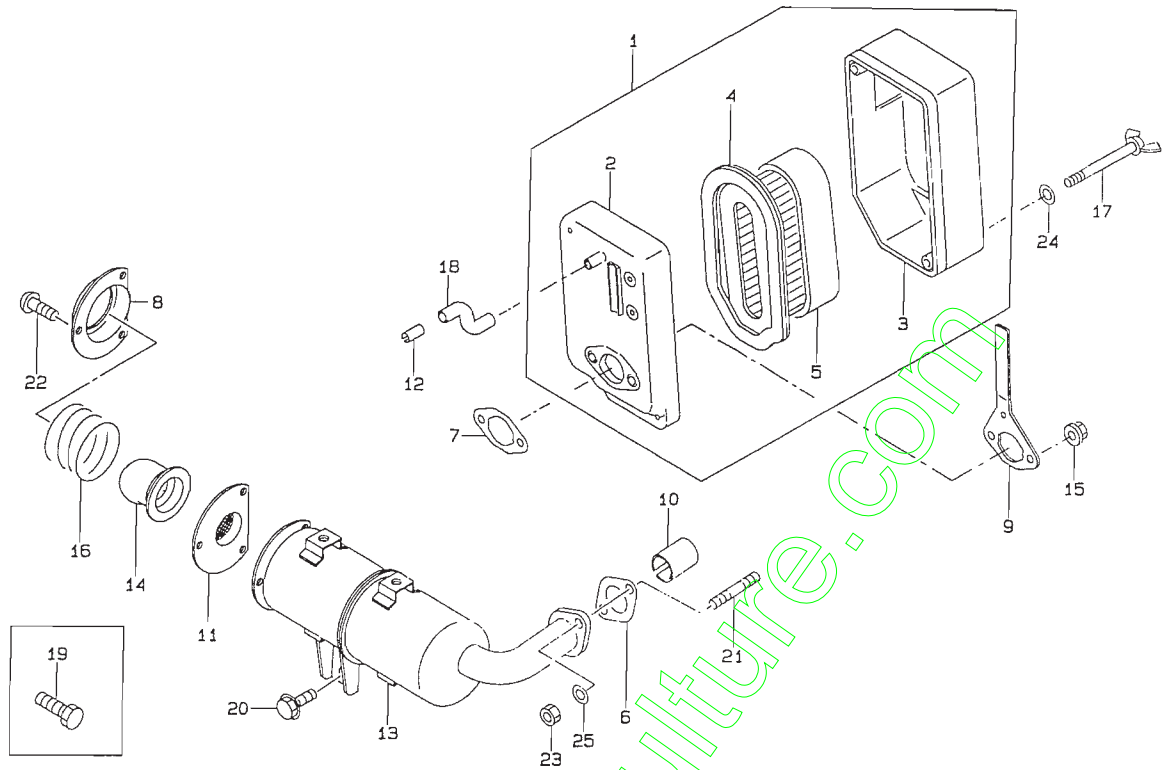
FIG. 9 CARBURETOR SYSTEM



5209-C08

KEY	PART CODE	DESCRIPTION	QTY	TYPE OF MODEL		I T C	C O L	G R P	REMARKS
				FE120G 2X	FE120G 3X				
1	5110 - 602 - 051 - XX	GASKET/CARBURETOR	3	*	*				110602051
2	5150 - 032 - 338 - XX	CARBURETOR ASSY	1	*					150032338
3	5110 - 092 - 919 - XX	GASKET	1	*	*				110092919
4	5161 - 832 - 001 - XX	FLOAT ASSY	1	*	*				161832001
5	5161 - 842 - 002 - XX	CHAMBER FLOAT ASSY	1	*	*				161842002
6	5230 - 132 - 053 - XX	SCREW ASSY	1	*	*				230132053
7	5161 - 852 - 007 - XX	VALVE ASSY THROTTLE	1	*	*				161852007
8	5161 - 862 - 012 - XX	VALVE/CHOKE ASSY	1	*	*				161862012
9	5230 - 132 - 054 - XX	SCREW ASSY	1	*	*				230132054
10	5230 - 132 - 055 - XX	SCREW ASSY	1	*	*				230132055
11	5491 - 212 - 167 - XX	NOZZLE/MAIN	1	*	*				491212167
12	5920 - 632 - 233 - XX	JET/MAIN	1	*	*				920632233
13	5920 - 642 - 082 - XX	JET/PILOT	1	*	*				920642082
14	5921 - 502 - 274 - XX	BOLT	1	*	*				921502274
15	5160 - 602 - 160 - XX	PIPE/INTAKE	1	*	*				160602160
16	5160 - 732 - 156 - XX	INSULATOR	1	*	*				160732156
17	5920 - 151 - 193 - XX	NUT	2	*	*				920151193
18	5951 - 156 - 812 - 00	CLAMP	1	*	*				395115681200
19	5921 - 902 - 105 - XX	TUBE	1	*	*				921902105
20	5172 - G06 - 18X - XX	STUD M6X18	2	*	*				172G0618
21	5172 - G06 - 73X - XX	STUD BOLT	2	*	*				172G0673
22	5150 - 032 - 341 - XX	CARBURETOR ASSY	1		*				150032341
23	5161 - 862 - 011 - XX	VALVE/CHOKE ASSY	1		*				161862011

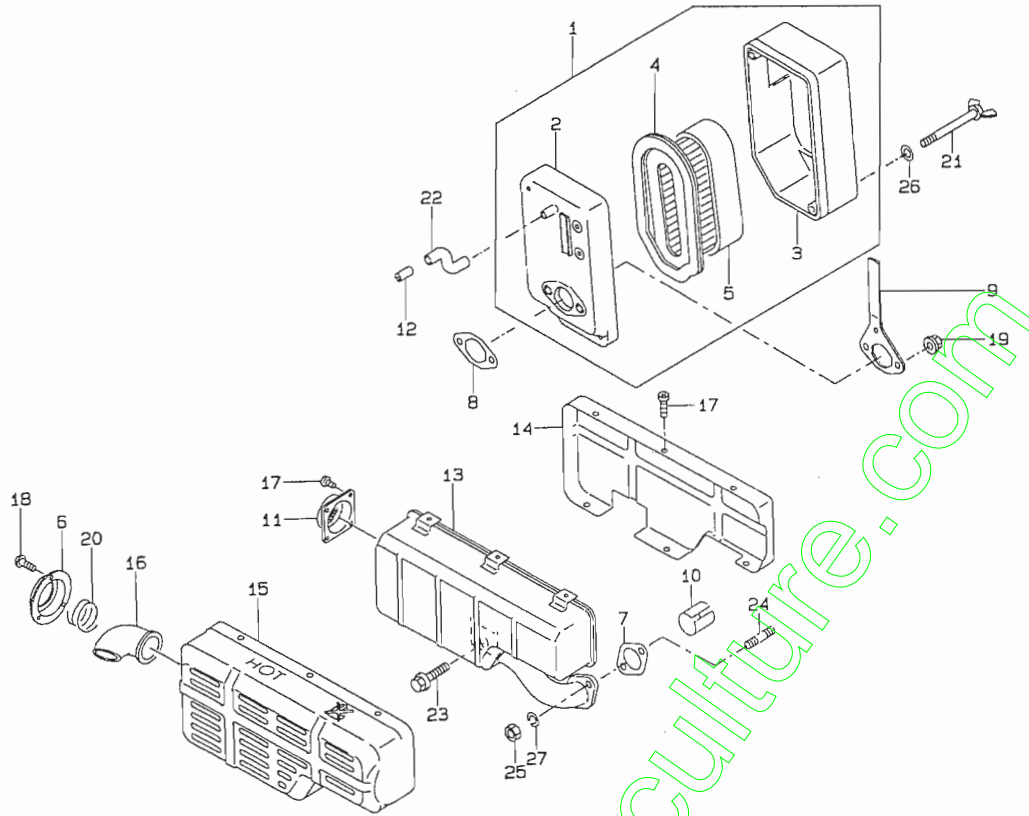
FIG. 10 AIR FILTER/MUFFLER SYSTEM (1)



5209-009A

KEY	PART CODE	DESCRIPTION	QTY	TYPE OF MODEL		I T C	C O L	G R P	REMARKS
				FE120G 2X	FE120G 3X				
1	5110 - 102 - 459 - XX	FILTER ASSY AIR	1	*					110102459
2	5110 - 112 - 241 - XX	CASE/AIR FILTER	1	*					110112241
3	5110 - 122 - 325 - XX	CAP,AIR FILTER	1	*					110122325
4	5110 - 132 - 132 - XX	ELEMENT/AIR FILTER	1	*					110132132
5	5110 - 132 - 133 - XX	ELEMENT/AIR FILTER	1	*					110132133
6	5110 - 602 - 037 - XX	GASKET/MUFFLER	1	*					110602037
7	5110 - 602 - 049 - XX	GASKET/AIR FILTER	1	*					110602049
8	5131 - 692 - 446 - YM	PLATE	1	*					131692446YM
9	5131 - 832 - 527 - XX	PLATE	1	*					131832527
10	5180 - 492 - 220 - XX	PIPE/EXHAUST	1	*					180492220
11	5180 - 772 - 098 - XX	ARRESTER SPARK	1	*					180772098
12	5144 - 011 - 341 - AX	PIPE	1	*					3144011341A
13	5490 - 702 - 579 - 9Y	MUFFLER COMP	1	*					4907025799Y
14	5591 - 562 - 089 - YM	PIPE/TAIL	1	*					591562089YM
15	5920 - 151 - 193 - XX	NUT	2	*					920151193
16	5144 - 061 - 455 - AX	SPRING	1	*					3144061455A
17	5921 - 502 - 226 - XX	BOLT	2	*					921502226
18	5921 - 902 - 043 - XX	TUBE	1	*					921902043
19	5110 - R06 - 08X - XX	BOLT M6X8	4	*					110R0608
20	5130 - B08 - 12X - XX	BOLT	1	*					130B0812
21	5171 - G06 - 16X - XX	STUD	2	*					171G0616
22	5214 - B05 - 08X - XX	SCREW	3	*					214B0508
23	5311 - R06 - 00X - XX	NUT/M6	2	*					311R0600
24	5411 - F05 - 00X - XX	WASHER	2	*					411F0500
25	5461 - F06 - 00X - XX	WASHER/M6	2	*					461F0600

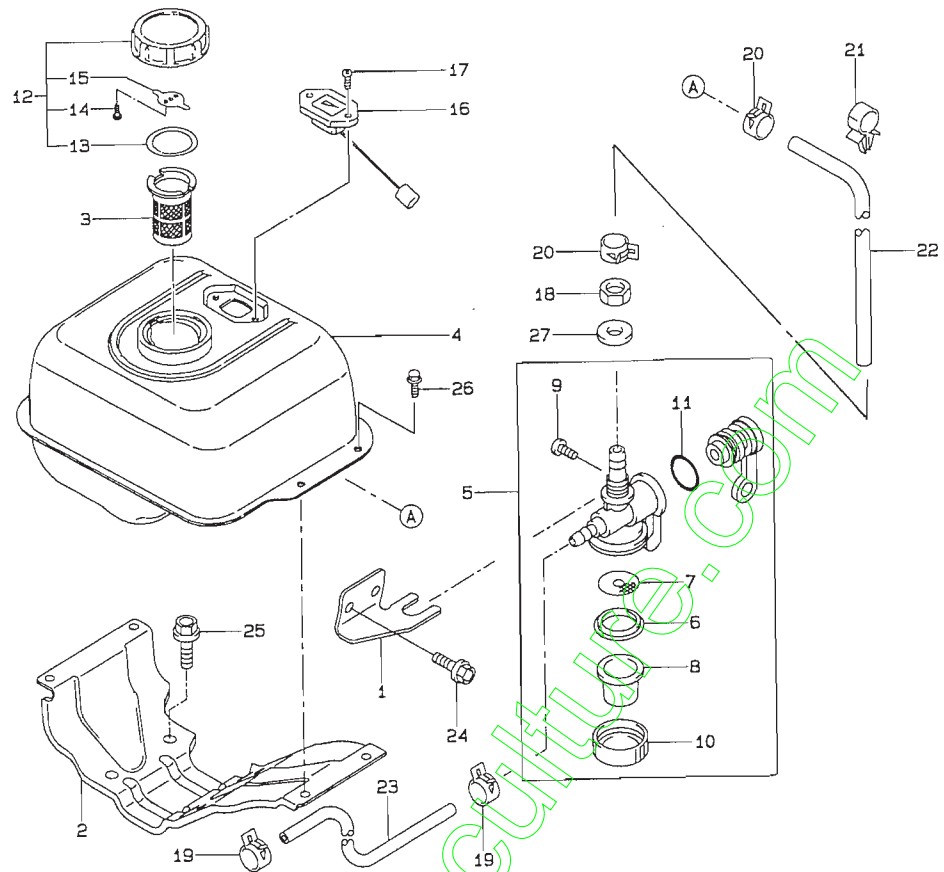
FIG. 11 AIR FILTER/MUFFLER SYSTEM (2)



5209-009B

KEY	PART CODE	DESCRIPTION	QTY	TYPE OF MODEL		I T C	C O L	G R P	REMARKS
				FE120G 2X	FE120G 3X				
1	5110 - 102 - 459 - XX	FILTER ASSY AIR	1		*				110102459
2	5110 - 112 - 241 - XX	CASE/AIR FILTER	1		*				110112241
3	5110 - 122 - 325 - XX	CAP,AIR FILTER	1		*				110122325
4	5110 - 132 - 132 - XX	ELEMENT/AIR FILTER	1		*				110132132
5	5110 - 132 - 133 - XX	ELEMENT/AIR FILTER	1		*				110132133
6	5110 - 122 - 304 - XX	CAP	1		*				110122304
7	5110 - 602 - 037 - XX	GASKET/MUFFLER	1		*				110602037
8	5110 - 602 - 049 - XX	GASKET/AIR FILTER	1		*				110602049
9	5131 - 832 - 527 - XX	PLATE	1		*				131832527
10	5180 - 492 - 220 - XX	PIPE/EXHAUST	1		*				180492220
11	5180 - 772 - 096 - XX	ARRESTER/SPARK	1		*				180772096
12	5144 - 011 - 341 - AX	PIPE	1		*				3144011341A
13	5490 - 702 - 585 - XX	MUFFLER COMP	1		*				490702585
14	5491 - 062 - 506 - XX	COVER/MUFFLER	1		*				491062506
15	5491 - 062 - 509 - XX	COVER/MUFFLER	1		*				491062509
16	5591 - 562 - 242 - XX	PIPE/TAIL	1		*				591562242
17	5920 - 092 - 307 - XX	SCREW	7		*				920092307
18	5920 - 092 - 322 - XX	SCREW	6		*				920092322
19	5920 - 151 - 193 - XX	NUT	2		*				920151193
20	5921 - 442 - 297 - XX	SPRING	1		*				921442297
21	5921 - 502 - 226 - XX	BOLT	2		*				921502226
22	5921 - 902 - 043 - XX	TUBE	1		*				921902043
23	5130 - B08 - 16X - XX	BOLT/M8X16	1		*				130B0816
24	5171 - G06 - 16X - XX	STUD	2		*				171G0616
25	5311 - R06 - 00X - XX	NUT/M6	2		*				311R0600

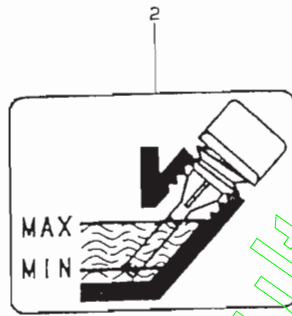
FIG. 13 FUEL FILTER SYSTEM (2)



5209-010B

KEY	PART CODE	DESCRIPTION	QTY	TYPE OF MODEL		I T C	C O L	G R P	REMARKS
				FE120G 2X	FE120G 3X				
1	5110 - 472 - 073 - XX	BRACKET	1		*				110472073
2	5205 - 222 - 09X - NX	BRACKET/TANK	1		*				320522209XN
3	5158 - 016 - 661 - FX	FILTER,FUEL	1		*				3158016661F
4	5510 - 012 - 254 - XN	FUEL TANK COMP	1		*				510012254XN
5	5510 - 232 - 131 - XX	TAP ASSY	1		*				510232131
6	5136 - 506 - 518 - 02	GASKET	1		*				313650651802
7	5490 - 192 - 095 - XX	FILTER/FUEL	1		*				490192095
8	5510 - 362 - 063 - XX	POT,FILTER	1		*				510362063
9	5136 - 506 - 517 - 00	SCREW	1		*				313650651700
10	5136 - 506 - 522 - 00	NUT,RING	1		*				313650652200
11	5136 - 506 - 512 - 00	O - RING	1		*				313650651200
12	5510 - 482 - 055 - XX	CAP TANK	1		*				510482055
13	5158 - 016 - 643 - BX	GASKET	1		*				3158016643B
14	5144 - 016 - 732 - AX	SCREW	2		*				3144016732A
15	5158 - 016 - 644 - AX	SPRING	1		*				3158016644A
16	5520 - 052 - 072 - XX	GAUGE,FUEL	1		*				520052072
17	5158 - 016 - 577 - AX	SCREW	2		*				3158016577A
18	5136 - 506 - 527 - 00	NUT	1		*				313650652700
19	5117 - 026 - 812 - AX	CLIP	2		*				3117026812A
20	5166 - 776 - 812 - AX	CLIP	2		*				3166776812A
21	5921 - 702 - 067 - XX	CLAMP	1		*				921702067
22	5921 - 902 - 095 - XX	TUBE/6X10X200	1		*				921902095
23	5921 - 902 - 096 - XX	TUBE 4X8X160	1		*				921902096
24	5130 - B05 - 08X - XX	BOLT	2		*				130B0508
25	5130 - B08 - 18X - XX	BOLT	4		*				130B0818

FIG. 15 LABEL



5209-012

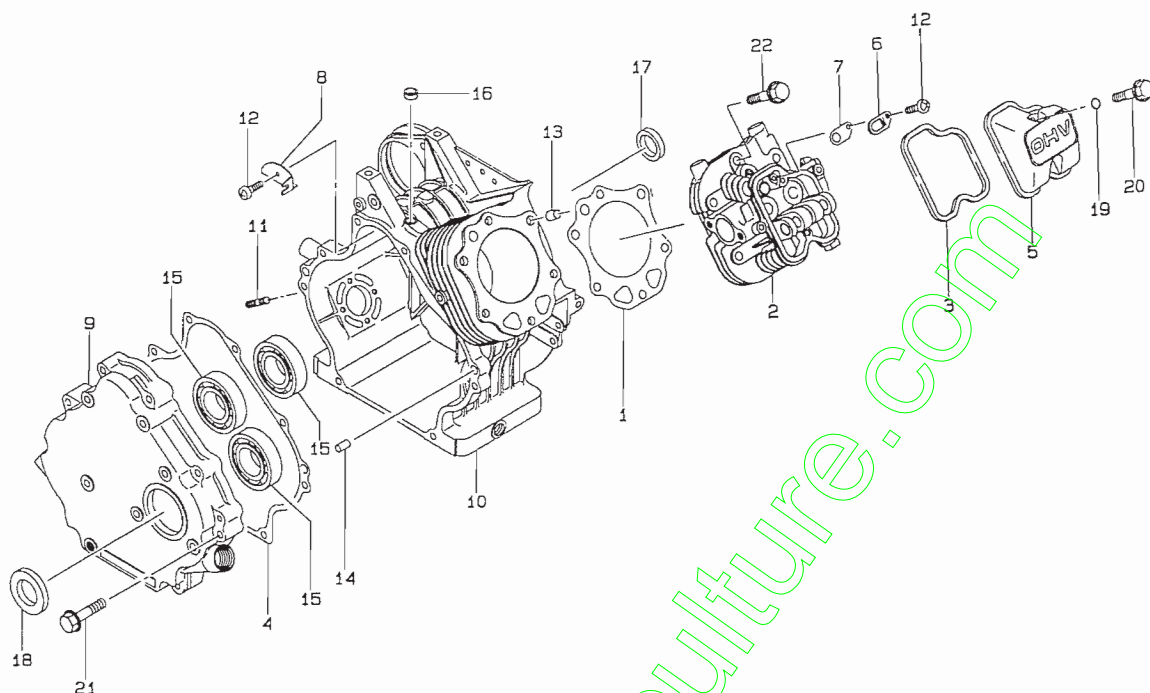
KEY	PART CODE	DESCRIPTION	QTY	TYPE OF MODEL		I T C	C O L	G R P	REMARKS
				FE120G 2X	FE120G 3X				
1	5560 - 302 - 423 - XX	LABEL	1		*				560302423
2	5560 - 312 - 458 - XX	LABEL/MANUAL	1	*	*				560312458

www.emc-motoculture.com

ENGINE
FE221G-5X...SA580

www.emc-motoculture.com

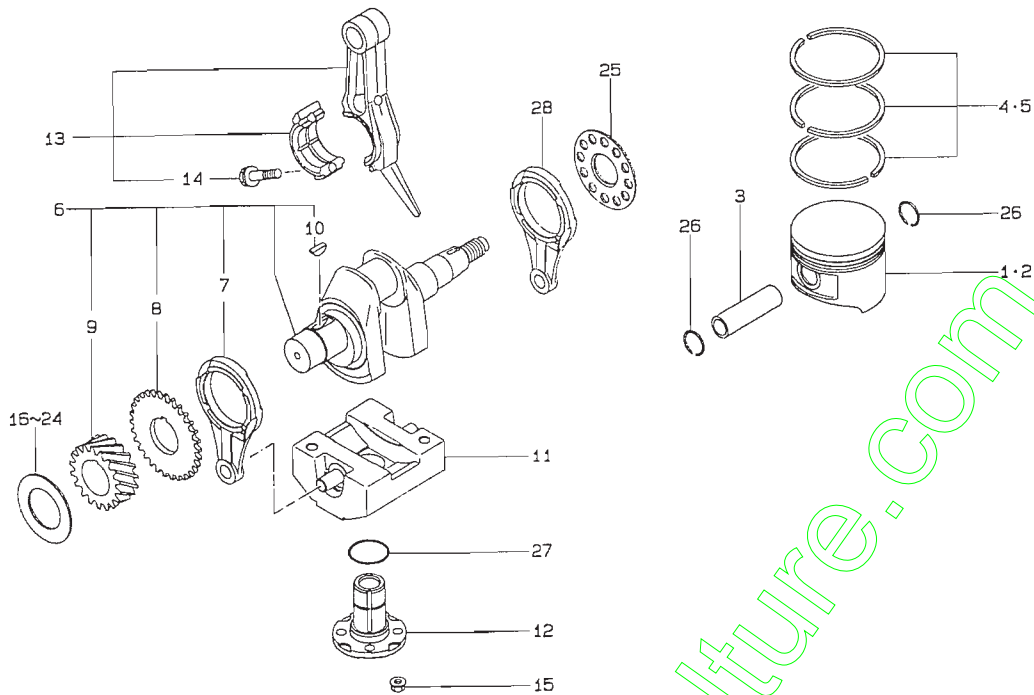
FIG. 1 CYLINDER/CRANK CASE SYSTEM



5210-001

KEY	PART CODE	DESCRIPTION	QTY	TYPE OF MODEL		I T C	C O L	G R P	REMARKS
				FE221G 5X					
1	5110 - 042 - 106 - XX	GASKET,HEAD	1	*					110042106
2	5110 - 082 - 086 - XX	HEAD,CYLINDER	1	*					110082086
3	5110 - 092 - 923 - XX	GASKET,LOCKER CASE	1	*					110092923
4	5110 - 092 - 924 - XX	GASKET,CRANK CASE	1	*					110092924
5	5110 - 226 - 002 - XX	CASE,LOCKER	1	*					110226002
6	5131 - 832 - 299 - XX	PLATE	1	*					131832299
7	5161 - 262 - 107 - XX	VALVE	1	*					161262107
8	5180 - 202 - 073 - XX	BAFFLE	1	*					180202073
9	5490 - 156 - 116 - XX	COVER,CRANK CASE	1	*					490156116
10	5491 - 202 - 223 - XX	CRANK CASE COMP	1	*					491202223
11	5920 - 042 - 083 - XX	BOLT	4	*					920042083
12	5920 - 092 - 308 - XX	SCREW	2	*					920092308
13	5920 - 431 - 037 - XX	PIN	2	*					920431037
14	5920 - 431 - 263 - XX	PIN	2	*					920431263
15	5920 - 452 - 188 - XX	BEARING,BALL	3	*					920452188
16	5920 - 492 - 097 - XX	SEAL OIL	1	*					920492097
17	5920 - 492 - 199 - XX	SEAL,OIL	1	*					920492199
18	5920 - 492 - 207 - XX	SEAL,OIL	1	*					920492207
19	5920 - 551 - 343 - XX	O - RING	2	*					920551343
20	5921 - 502 - 145 - XX	BOLT	2	*					921502145
21	5130 - G08 - 40X - XX	BOLT	8	*					130G0840
22	5130 - T08 - 45X - XX	BOLT	6	*					130T0845

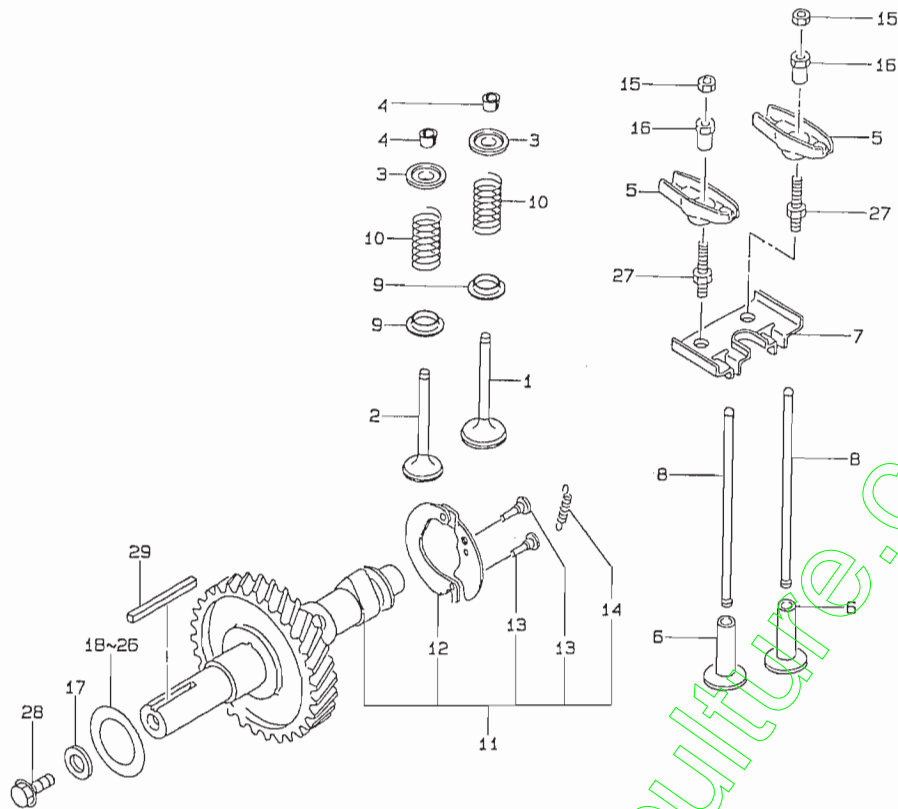
FIG. 2 PISTON/CRANK SHAFT SYSTEM



5210-002

KEY	PART CODE	DESCRIPTION	QTY	TYPE OF MODEL		I T C	C O L	G R P	REMARKS
				FE221G 5X					
1	5130 - 012 - 128 - XX	PISTON,ENGINE	1	*					130012128
2	5130 - 292 - 117 - XX	PISTON L = 0.5	AR	*					130292117
3	5130 - 022 - 077 - XX	PIN,PISTON	1	*					130022077
4	5130 - 082 - 055 - XX	RING SET,PISTON	1	*					130082055
5	5130 - 252 - 097 - XX	RING/PISTON L = 0.5	AR	*					130252097
6	5130 - 312 - 054 - XX	CRANK SHAFT COMP	1	*					130312054
7	5461 - 022 - 075 - XX	ROD	1	*					461022075
8	5590 - 512 - 097 - XX	GEAR,SPUR	1	*					590512097
9	5590 - 562 - 845 - XX	GEAR,HELICAL	1	*					590562845
10	5920 - 382 - 098 - XX	KEY	1	*					920382098
11	5130 - 426 - 012 - XX	WEIGHT	1	*					130426012
12	5131 - 072 - 088 - XX	SHAFT	1	*					131072088
13	5132 - 516 - 038 - XX	CONNECTING ROD ASSY	1	*					132516038
14	5156 - 013 - 245 - AX	BOLT,CONN.	2	*					3156013245A
15	5920 - 151 - 193 - XX	NUT	4	*					920151193
16	5920 - 252 - 168 - XX	SHIM T = 1.13	AR	*					920252168
17	5920 - 252 - 169 - XX	SHIM T = 1.18	AR	*					920252169
18	5920 - 252 - 170 - XX	SHIM T = 1.23	AR	*					920252170
19	5920 - 252 - 171 - XX	SHIM T = 1.28	AR	*					920252171
20	5920 - 252 - 172 - XX	SHIM T = 1.33	AR	*					920252172
21	5920 - 252 - 173 - XX	SHIM T = 1.38	AR	*					920252173
22	5920 - 252 - 174 - XX	SHIM T = 1.43	AR	*					920252174
23	5920 - 252 - 175 - XX	SHIM T = 1.48	AR	*					920252175
24	5920 - 252 - 207 - XX	SHIM T = 1.53	AR	*					920252207
25	5920 - 262 - 052 - XX	SPACER	1	*					920262052

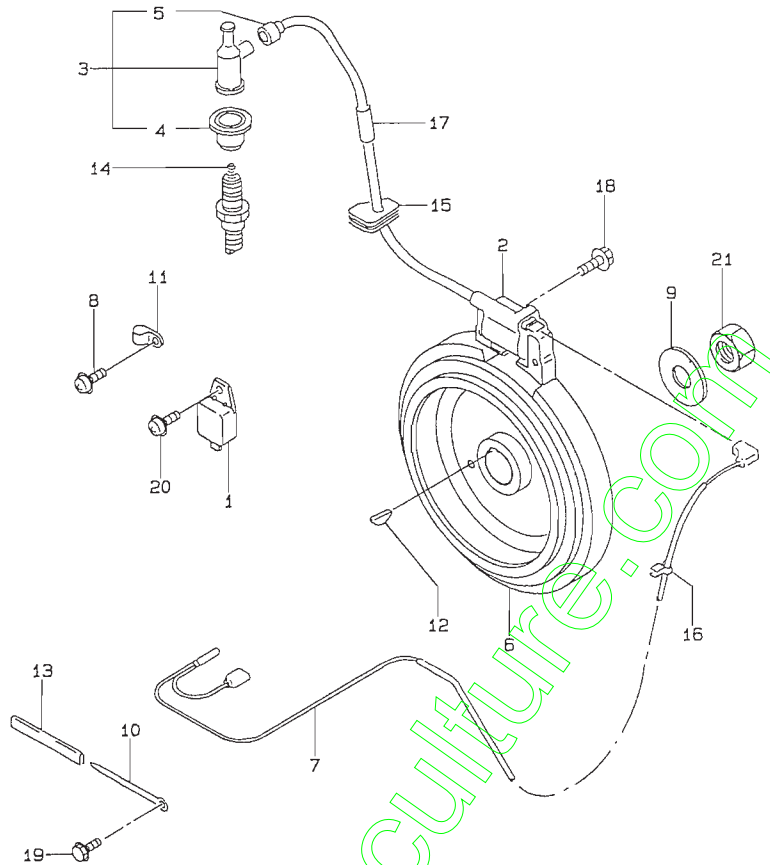
FIG. 3 VALVE/CAM SHAFT SYSTEM



5210-003

KEY	PART CODE	DESCRIPTION	QTY	TYPE OF MODEL		I T C	C O L	G R P	REMARKS
				FE221G	5X				
1	5120 - 042 - 093 - XX	VALVE,INTAKE	1	*					120042093
2	5120 - 052 - 081 - XX	VALVE,EXHAUST	1	*					120052081
3	5120 - 092 - 066 - XX	RETAINER,VALVESPRING	2	*					120092066
4	5120 - 112 - 056 - XX	COLLET	4	*					120112056
5	5120 - 162 - 060 - XX	ARM,LOCKER	2	*					120162060
6	5120 - 322 - 060 - XX	TAPPET	2	*					120322060
7	5130 - 702 - 086 - XX	GUIDE	1	*					130702086
8	5131 - 162 - 071 - XX	ROD,PUSH	2	*					131162071
9	5160 - 072 - 072 - XX	SEAT,SPRING	2	*					160072072
10	5490 - 782 - 067 - XX	SPRING,ENGINE VALVE	2	*					490782067
11	5491 - 182 - 104 - XX	CAMSHAFT COMP	1	*					491182104
12	5211 - 182 - 078 - XX	DECOMPRESSOR	1	*					211182078
13	5920 - 432 - 186 - XX	PIN	2	*					920432186
14	5921 - 442 - 323 - XX	SPRING	1	*					921442323
15	5920 - 152 - 240 - XX	NUT,6MM	2	*					920152240
16	5920 - 152 - 253 - XX	NUT	2	*					920152253
17	5166 - 703 - 274 - 00	WASHER	1	*					316670327400
18	5920 - 252 - 168 - XX	SHIM T = 1.13	AR	*					920252168
19	5920 - 252 - 169 - XX	SHIM T = 1.18	AR	*					920252169
20	5920 - 252 - 170 - XX	SHIM T = 1.23	AR	*					920252170
21	5920 - 252 - 171 - XX	SHIM T = 1.28	AR	*					920252171
22	5920 - 252 - 172 - XX	SHIM T = 1.33	AR	*					920252172
23	5920 - 252 - 173 - XX	SHIM T = 1.38	AR	*					920252173
24	5920 - 252 - 174 - XX	SHIM T = 1.43	AR	*					920252174
25	5920 - 252 - 175 - XX	SHIM T = 1.48	AR	*					920252175

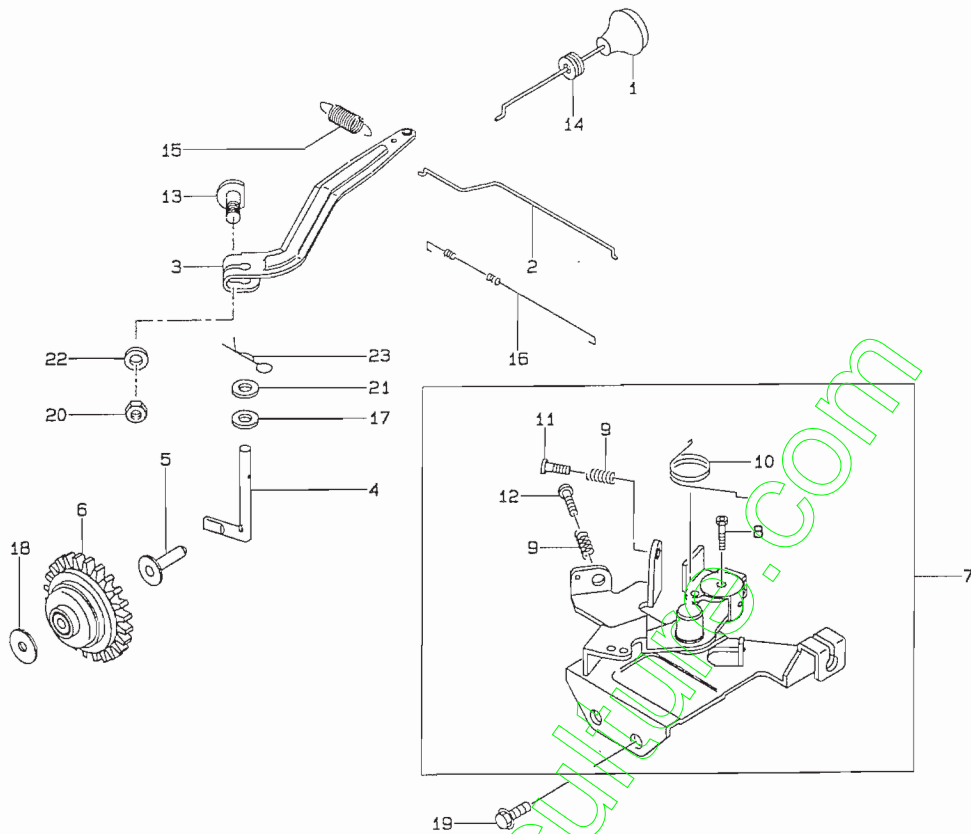
FIG. 6 ELECTRICAL SYSTEM



5210-006

KEY	PART CODE	DESCRIPTION	QTY	TYPE OF MODEL		I T C	C O L	G R P	REMARKS
				FE221G	5X				
1	5211 - 192 - 139 - XX	IGNITER	1	*					211192139
2	5211 - 212 - 067 - XX	COIL,IGNITION	1	*					211212067
3	5211 - 602 - 053 - XX	CAP ASSY	1	*					211602053
4	5140 - 242 - 234 - XX	COVER	1	*					140242234
5	5144 - 938 - 415 - AX	GROMMET,PLUG CAP	1	*					3144938415A
6	5211 - 942 - 229 - XX	FLYWHEEL COMP	1	*					211942229
7	5260 - 112 - 280 - XX	WIRE,LEAD	1	*					260112280
8	5920 - 092 - 308 - XX	SCREW	1	*					920092308
9	5920 - 222 - 205 - XX	WASHER	1	*					920222205
10	5153 - 408 - 161 - AX	CLAMP	1	*					3153408161A
11	5920 - 372 - 171 - XX	CLAMP	1	*					920372171
12	5920 - 382 - 094 - XX	KEY	1	*					920382094
13	5153 - 408 - 167 - AX	TUBE	1	*					3153408167A
14	5920 - 701 - 167 - XX	PLUG	1	*					920701167
15	5920 - 712 - 112 - XX	GROMMET	1	*					920712112
16	5921 - 702 - 017 - XX	CLAMP	1	*					921702017
17	5921 - 902 - 069 - XX	TUBE	1	*					921902069
18	5130 - B05 - 25X - XX	BOLT	2	*					130B0525
19	5130 - G06 - 12X - XX	BOLT	1	*					130G0612
20	5224 - B04 - 08X - XX	BOLT	1	*					224B0408
21	5314 - G16 - 00X - XX	NUT	1	*					314G1600

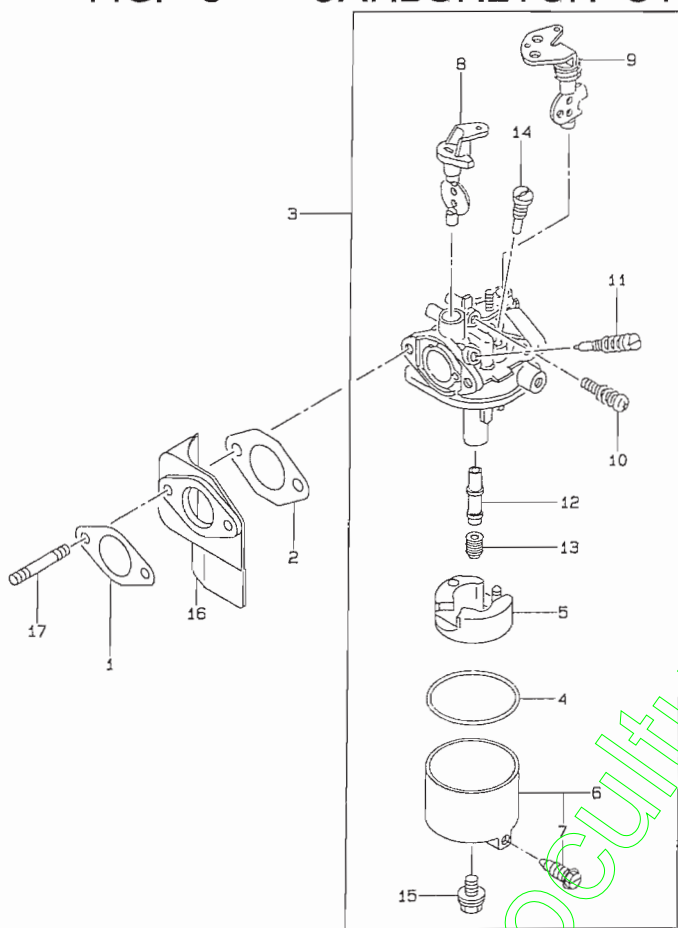
FIG. 7 CONTROL SYSTEM



5210-007

KEY	PART CODE	DESCRIPTION	QTY	TYPE OF MODEL		I T C	C O L	G R P	REMARKS
				FE221G 5X					
1	5161 - 692 - 084 - XX	LINK,CHIKE	1	*					161692084
2	5161 - 712 - 063 - XX	LINK	1	*					161712063
3	5211 - 872 - 061 - XX	ARM ASSY	1	*					211872061
4	5390 - 032 - 076 - XX	ARM,PIVOT	1	*					390032076
5	5420 - 362 - 060 - XX	SLEAVE	1	*					420362060
6	5491 - 102 - 069 - XX	GOVERNOR ASSY	1	*					491102069
7	5491 - 132 - 121 - XX	PANEL CONTROL COMP	1	*					491132121
8	5155 - 015 - 381 - AX	BOLT	1	*					3155015381A
9	5921 - 442 - 004 - XX	SPRING	2	*					921442004
10	5921 - 442 - 263 - XX	SPRING	1	*					921442263
11	5110 - B05 - 22X - XX	BOLT,FLANGED	1	*					110B0522
12	5214 - B05 - 22X - XX	SCREW/M5X22	1	*					214B0522
13	5920 - 022 - 269 - XX	BOLT	1	*					920022269
14	5920 - 712 - 126 - XX	GROMMET	1	*					920712126
15	5921 - 442 - 199 - XX	SPRING	1	*					921442199
16	5921 - 442 - 279 - XX	SPRING	1	*					921442279
17	5922 - 002 - 029 - XX	WASHER	1	*					922002029
18	5922 - 002 - 036 - XX	WASHER	1	*					922002036
19	5130 - G06 - 12X - XX	BOLT	2	*					130G0612
20	5311 - B06 - 00X - XX	NUT/M6	1	*					311B0600
21	5410 - B06 - 00X - XX	WASHER/M6	1	*					410B0600
22	5411 - B06 - 00X - XX	WASHER/M6	1	*					411B0600
23	5554 - A06 - 00X - XX	PIN	1	*					554A0600

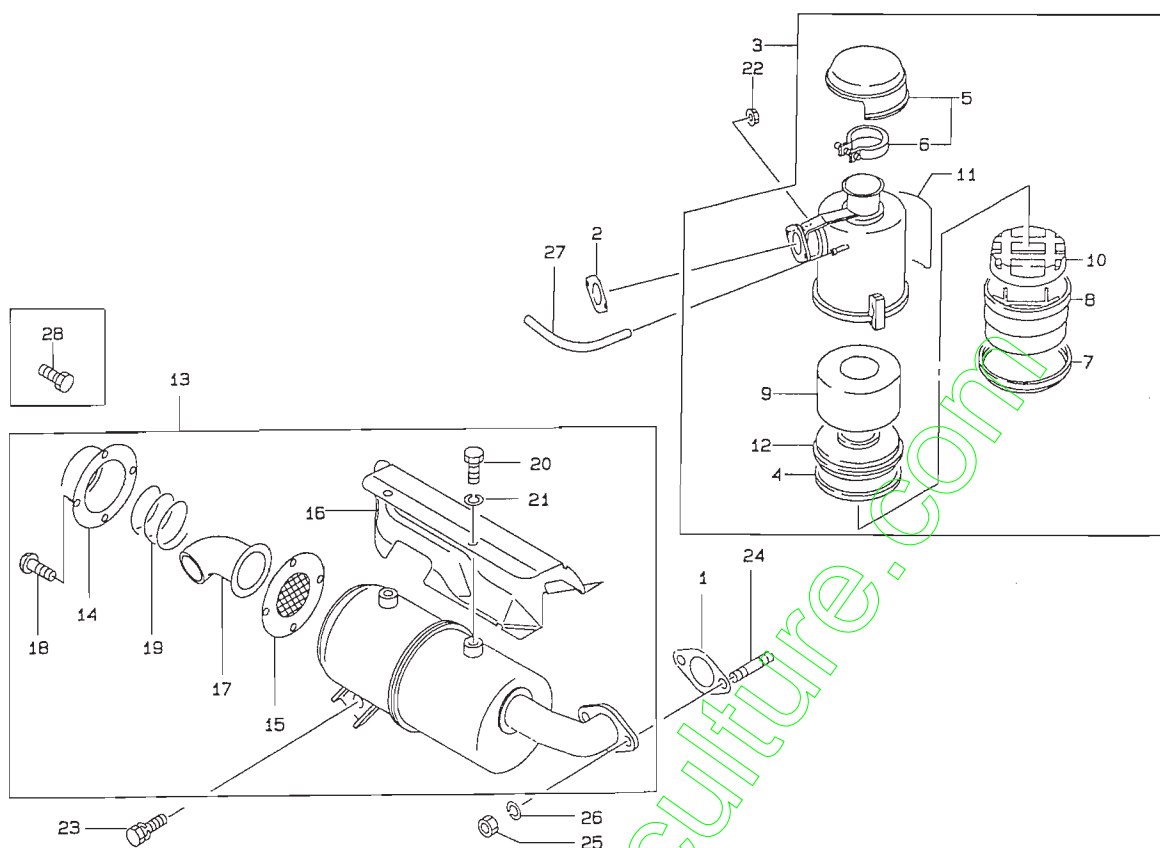
FIG. 8 CARBURETOR SYSTEM



5210-008

KEY	PART CODE	DESCRIPTION	QTY	TYPE OF MODEL		I T C	C O L	G R P	REMARKS
				FE221G	5X				
1	5110 - 092 - 927 - XX	GASKET,INSULATOR	1	*					110092927
2	5110 - 092 - 928 - XX	GASKET,CARBURETOR	1	*					110092928
3	5150 - 032 - 333 - XX	CARBURETOR ASSY	1	*					150032333
4	5110 - 092 - 919 - XX	GASKET	1	*					110092919
5	5161 - 832 - 001 - XX	FLOAT ASSY	1	*					161832001
6	5161 - 842 - 002 - XX	CHAMBER FLOAT ASSY	1	*					161842002
7	5230 - 132 - 053 - XX	SCREW ASSY	1	*					230132053
8	5161 - 852 - 006 - XX	VALVE ASSY	1	*					161852006
9	5161 - 862 - 007 - XX	VALVE/CHOKE ASSY	1	*					161862007
10	5230 - 132 - 054 - XX	SCREW ASSY	1	*					230132054
11	5230 - 132 - 055 - XX	SCREW ASSY	1	*					230132055
12	5491 - 212 - 170 - XX	NOZZLE,MAIN	1	*					491212170
13	5920 - 632 - 209 - XX	JET/MAIN	1	*					920632209
14	5920 - 642 - 085 - XX	JET,PILOT	1	*					920642085
15	5921 - 502 - 274 - XX	BOLT	1	*					921502274
16	5160 - 732 - 150 - XX	INSULATOR	1	*					160732150
17	5172 - G06 - 77X - XX	STUD BOLT	2	*					172G0677

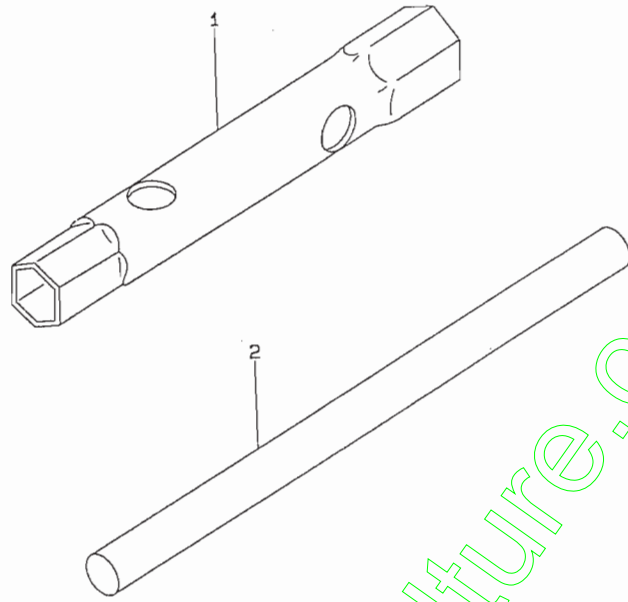
FIG. 9 AIR FILTER/MUFFLER SYSTEM



5210-009

KEY	PART CODE	DESCRIPTION	QTY	TYPE OF MODEL		I T C	C O L	G R P	REMARKS
				FE221G 5X					
1	5110 - 092 - 487 - XX	GASKET,MUFFLER	1	*					110092487
2	5110 - 092 - 925 - XX	GASKET AIR FILTER	1	*					110092925
3	5110 - 102 - 438 - 9H	AIR FILTER ASSY	1	*					1101024389H
4	5110 - 092 - 859 - XX	GASKET	1	*					110092859
5	5110 - 122 - 135 - 9H	CAP/AIR FILTER	1	*					1101221359H
6	5920 - 722 - 073 - XX	BAND	1	*					920722073
7	5430 - 582 - 069 - XX	RING	1	*					430582069
8	5156 - 401 - 321 - AX	PAN OIL	1	*					3156401321A
9	5490 - 642 - 054 - XX	FILTER,AIR	1	*					490642054
10	5490 - 642 - 055 - XX	FILTER,AIR	1	*					490642055
11	5560 - 312 - 223 - XX	LABEL/MANUAL	1	*					560312223
12	5593 - 662 - 065 - XX	GRATE	1	*					593662065
13	5490 - 692 - 229 - XX	MUFFLER ASSY	1	*					490692229
14	5110 - 122 - 316 - 9X	CAP	1	*					1101223169X
15	5180 - 772 - 097 - XX	ARRESTER/SPARK	1	*					180772097
16	5491 - 062 - 510 - 9X	COVER/MUFFLER	1	*					4910625109X
17	5591 - 562 - 230 - 9Y	PIPE/TAIL	1	*					5915622309Y
18	5920 - 092 - 322 - XX	SCREW	4	*					920092322
19	5921 - 442 - 262 - XX	SPRING	1	*					921442262
20	5110 - R06 - 08X - XX	BOLT M6X8	4	*					110R0608
21	5410 - B06 - 00X - XX	WASHER/M6	4	*					410B0600
22	5920 - 151 - 193 - XX	NUT	2	*					920151193
23	5130 - G08 - 16X - XX	BOLT	1	*					130G0816
24	5171 - G08 - 18X - XX	STUD	2	*					171G0818
25	5317 - R08 - 00X - XX	NUT/M8	2	*					317R0800

FIG. 13 TOOL



5210-013

KEY	PART CODE	DESCRIPTION	QTY	TYPE OF MODEL		I T C	C O L	G R P	REMARKS
				FE221G 5X					
1	5921 - 102 - 098 - XX	TOOL,WRENCH	1	*					921102098
2	5151 - 200 - 945 - 00	BAR	1	*					315120094500

www.emc-motoculture.com

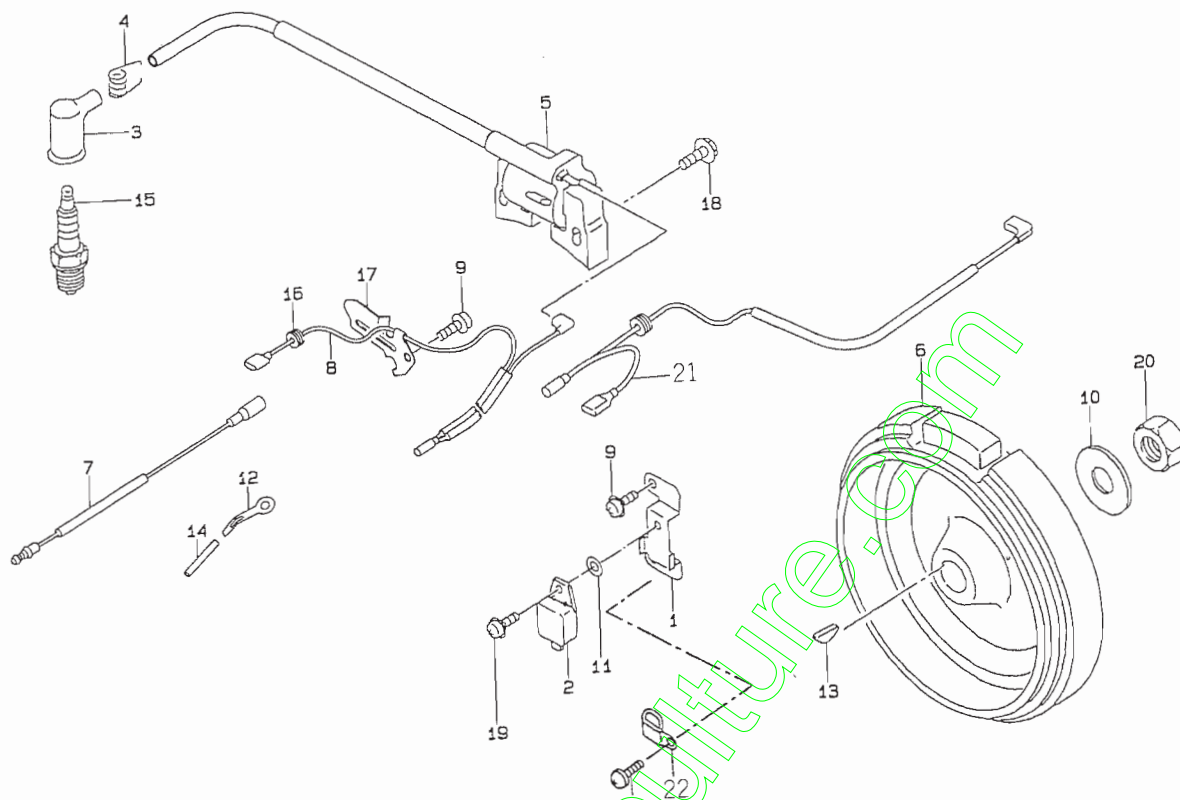
ENGINE

FE161G-7X ... SA370

FE161G-8X ... SA570

www.emc-motoculture.com

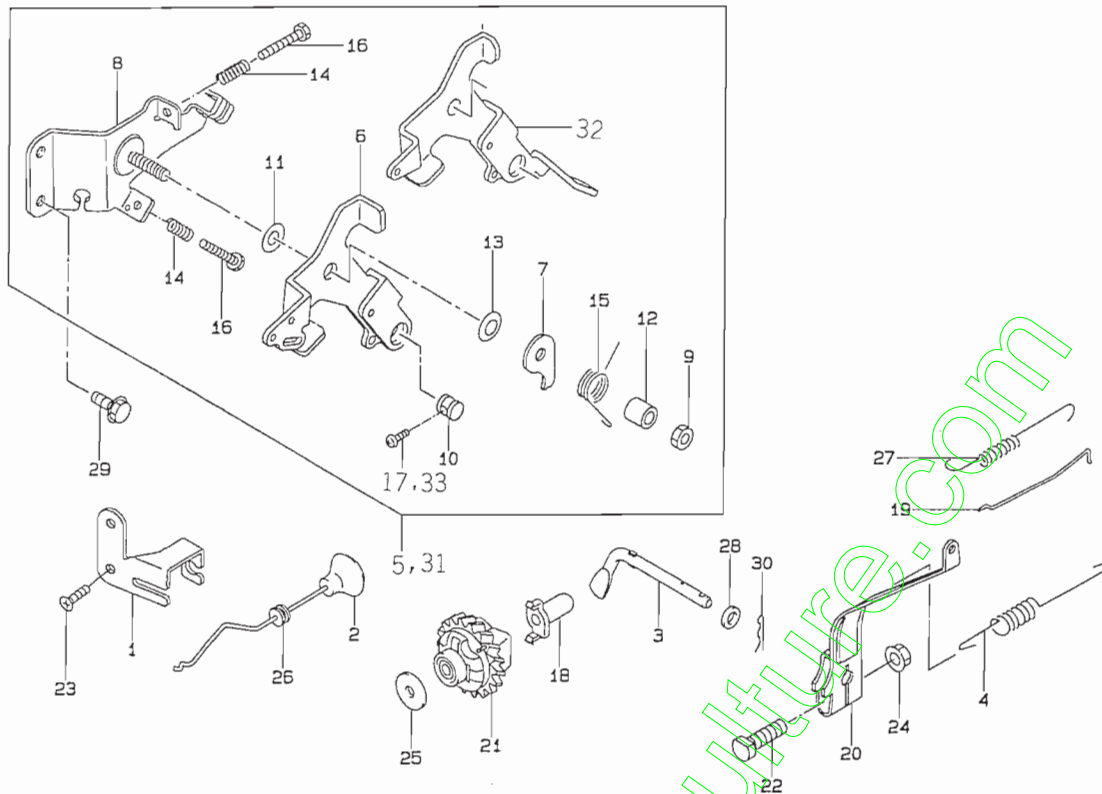
FIG. 7 ELECTRICAL SYSTEM



5211-006

KEY	PART CODE	DESCRIPTION	QTY	TYPE OF MODEL		I T C	C O L	G R P	REMARKS
				FE161G 7X	FE161G 8X				
1	5110 - 462 - 142 - XX	BRACKET	1	*	*				110462142
2	5211 - 192 - 139 - XX	IGNITER	1	*	*				211192139
3	5211 - 302 - 066 - XX	CAP, SPARK PLUG	1	*	*				211302066
4	5172 - 708 - 419 - AX	SPRING	1	*	*				3172708419A
5	5211 - 712 - 174 - XX	COIL ASSY IGNITION	1	*	*				211712174
6	5211 - 942 - 236 - XX	FLYWHEEL COMP	1	*	*				211942236
7	5260 - 112 - 112 - XX	WIRE	1	*	*				260112112
8	5260 - 112 - 287 - XX	WIRE/LEAD	1	*	*				260112287
9	5920 - 092 - 166 - XX	SCREW	3	*	*				920092166
10	5144 - 013 - 482 - AX	WASHER	1	*	*				3144013482A
11	5158 - 016 - 625 - AX	WASHER	1	*	*				3158016625A
12	5920 - 372 - 165 - XX	CLAMP	1	*	*				920372165
13	5920 - 382 - 077 - XX	KEY	1	*	*				920382077
14	5920 - 592 - 156 - XX	TUBE	1	*	*				920592156
15	5920 - 701 - 167 - XX	PLUG	1	*	*				920701167
16	5920 - 712 - 125 - XX	GROMMET	1	*	*				920712125
17	5921 - 702 - 070 - XX	CLAMP	1	*	*				921702070
18	5130 - B05 - 25X - XX	BOLT	2	*	*				130B0525
19	5242 - B04 - 10X - XX	BOLT	1	*	*				242B0410
20	5314 - G14 - 00X - XX	NUT	1	*	*				314G1400
21	5260 - 112 - 254 - XX	WIRE/LEAD	1		*				260112254
22	5920 - 372 - 171 - XX	CLAMP	1		*				920372171

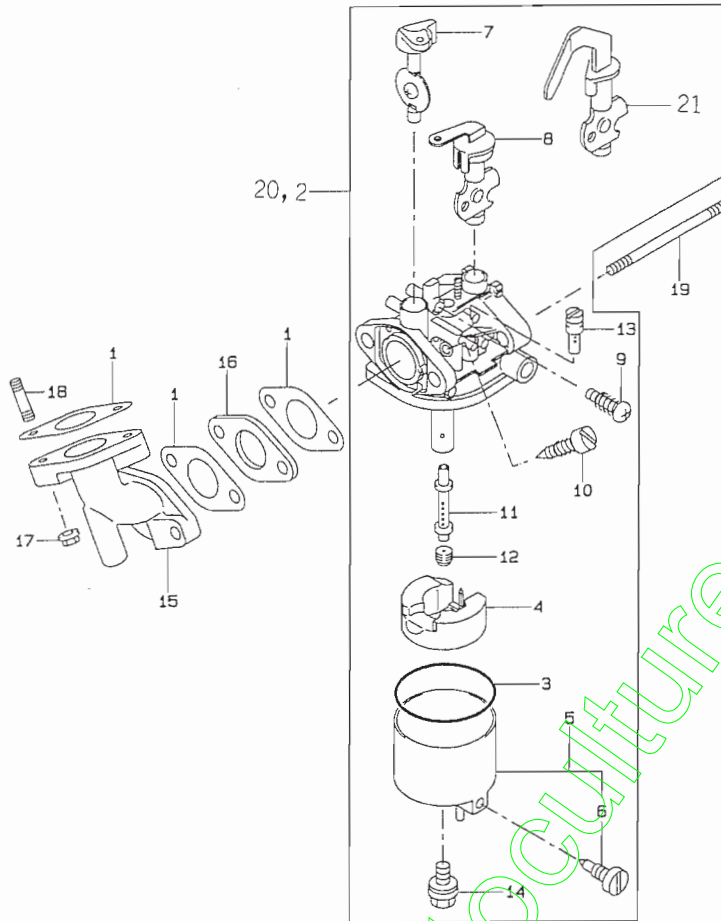
FIG. 8 CONTROL SYSTEM



5211-007

KEY	PART CODE	DESCRIPTION	QTY	TYPE OF MODEL		I T C	C O L	G R P	REMARKS
				FE161G 7X	FE161G 8X				
1	5110 - 482 - 023 - XX	BRACKET	1	*					110482023
2	5161 - 692 - 116 - XX	LINK/CHOKE	1	*					161692116
3	5390 - 032 - 074 - XX	ARM/PIVOT	1	*	*				390032074
4	5391 - 292 - 053 - XX	SPRING/GOVERNOR	1	*	*				391292053
5	5391 - 802 - 787 - XX	PANEL ASSY CONTROL	1	*					391802787
6	5131 - 682 - 349 - XX	LEVER	1	*					131682349
7	5131 - 832 - 371 - XX	PLATE	1	*	*				131832371
8	5592 - 262 - 276 - XX	PANEL/CONTROL	1	*	*				592262276
9	5144 - 015 - 385 - AX	NUT	1	*	*				3144015385A
10	5920 - 152 - 120 - XX	NUT	1	*	*				920152120
11	5144 - 015 - 383 - AX	WASHER	1	*	*				3144015383A
12	5920 - 262 - 304 - XX	SPACER	1	*	*				920262304
13	5144 - 015 - 388 - AX	SPRING	1	*	*				3144015388A
14	5921 - 442 - 266 - XX	SPRING	2	*	*				921442266
15	5921 - 442 - 270 - XX	SPRING	1	*	*				921442270
16	5921 - 502 - 227 - XX	BOLT	2	*	*				921502227
17	5214 - B04 - 08X - XX	SCREW M4X8	1	*					214B0408
18	5144 - 015 - 121 - BX	SLEEVE, GOVERNOR	1	*	*				3144015121B
19	5490 - 462 - 098 - XX	ROD/GOVERNOR	1	*	*				490462098
20	5491 - 032 - 134 - XX	ARM/GOVERNOR	1	*	*				491032134
21	5491 - 102 - 076 - XX	GOVERNOR - ASSY	1	*	*				491102076
22	5920 - 022 - 269 - XX	BOLT	1	*	*				920022269
23	5920 - 092 - 308 - XX	SCREW	2	*					920092308
24	5920 - 151 - 193 - XX	NUT	1	*	*				920151193
25	5144 - 015 - 135 - AX	WASHER	1	*	*				3144015135A

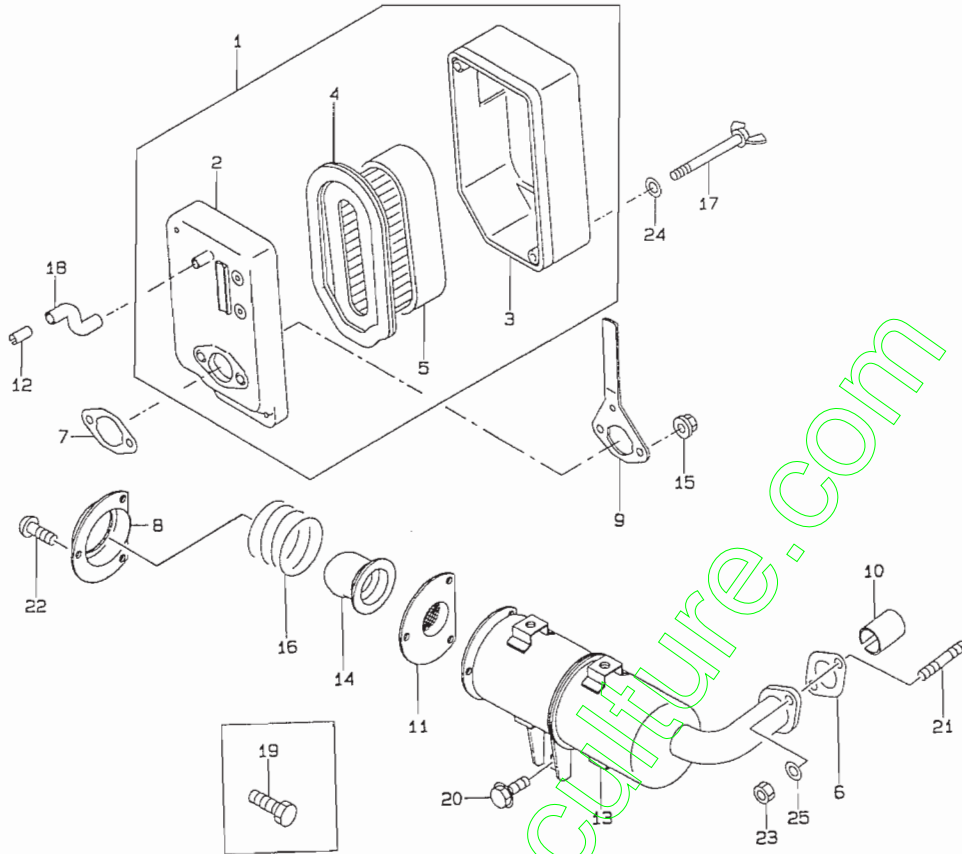
FIG. 9 CARBURETOR SYSTEM



E211-C08

KEY	PART CODE	DESCRIPTION	QTY	TYPE OF MODEL		I T C	C O L	G R P	REMARKS
				FE161G 7X	FE161G 8X				
1	5110 - 602 - 051 - XX	GASKET/CARBURETOR	3	*	*				110602051
2	5150 - 032 - 339 - XX	CARBURETOR ASSY	1	*					150032339
3	5110 - 092 - 919 - XX	GASKET	1	*	*				110092919
4	5161 - 832 - 001 - XX	FLOAT ASSY	1	*	*				161832001
5	5161 - 842 - 002 - XX	CHAMBER FLOAT ASSY	1	*	*				161842002
6	5230 - 132 - 053 - XX	SCREW ASSY	1	*	*				230132053
7	5161 - 852 - 010 - XX	VALVE ASSY THROTTLE	1	*	*				161852010
8	5161 - 862 - 010 - XX	VALVE ASSY CHOKE	1	*	*				161862010
9	5230 - 132 - 054 - XX	SCREW ASSY	1	*	*				230132054
10	5230 - 132 - 055 - XX	SCREW ASSY	1	*	*				230132055
11	5491 - 212 - 155 - XX	NOZZLE/MAIN	1	*	*				491212155
12	5920 - 632 - 208 - XX	JET/MAIN	1	*	*				920632208
13	5920 - 642 - 082 - XX	JET/PILOT	1	*	*				920642082
14	5921 - 502 - 274 - XX	BOLT	1	*	*				921502274
15	5160 - 602 - 154 - XX	PIPE/INTAKE	1	*	*				160602154
16	5160 - 732 - 147 - XX	INSULATOR	1	*	*				160732147
17	5920 - 151 - 193 - XX	NUT	2	*	*				920151193
18	5172 - G06 - 18X - XX	STUD M6X18	2	*	*				172G0618
19	5172 - G06 - 73X - XX	STUD BOLT	2	*	*				172G0673
20	5150 - 032 - 340 - XX	CARBURETOR ASSY	1		*				150032340
21	5161 - 862 - 001 - XX	VALVE ASSY CHOKE	1		*				161862001

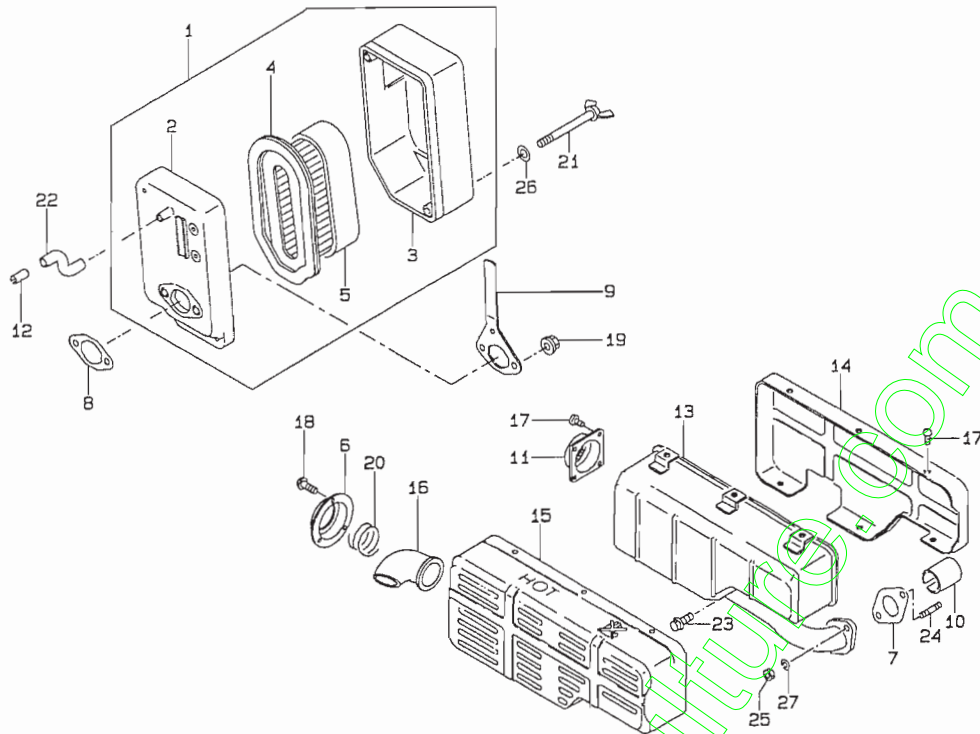
FIG. 10 AIR FILTER/MUFFLER SYSTEM (1)



5211-009A

KEY	PART CODE	DESCRIPTION	QTY	TYPE OF MODEL		I T C	C O L	G R P	REMARKS
				FE161G 7X	FE161G 8X				
1	5110 - 102 - 459 - XX	FILTER ASSY AIR	1	*					110102459
2	5110 - 112 - 241 - XX	CASE/AIR FILTER	1	*					110112241
3	5110 - 122 - 325 - XX	CAP,AIR FILTER	1	*					110122325
4	5110 - 132 - 132 - XX	ELEMENT /AIR FILTER	1	*					110132132
5	5110 - 132 - 133 - XX	ELEMENT /AIR FILTER	1	*					110132133
6	5110 - 602 - 037 - XX	GASKET/MUFFLER	1	*					110602037
7	5110 - 602 - 049 - XX	GASKET/AIR FILTER	1	*					110602049
8	5131 - 692 - 446 - YM	PLATE	1	*					131692446YM
9	5131 - 832 - 527 - XX	PLATE	1	*					131832527
10	5180 - 492 - 202 - XX	PIPE/EXHAUST	1	*					180492202
11	5180 - 772 - 098 - XX	ARRESTER SPARK	1	*					180772098
12	5144 - 011 - 341 - AX	PIPE	1	*					3144011341A
13	5490 - 702 - 574 - 9Y	MUFFLER COMP	1	*					4907025749Y
14	5591 - 562 - 089 - YM	PIPE/TAIL	1	*					591562089YM
15	5920 - 151 - 193 - XX	NUT	2	*					920151193
16	5144 - 061 - 455 - AX	SPRING	1	*					3144061455A
17	5921 - 502 - 226 - XX	BOLT	2	*					921502226
18	5921 - 902 - 043 - XX	TUBE	1	*					921902043
19	5110 - R06 - 08X - XX	BOLT M6X8	4	*					110R0608
20	5130 - B08 - 12X - XX	BOLT	1	*					130B0812
21	5171 - G06 - 16X - XX	STUD	2	*					171G0616
22	5214 - B05 - 08X - XX	SCREW	3	*					214B0508
23	5311 - R06 - 00X - XX	NUT/M6	2	*					311R0600
24	5411 - F05 - 00X - XX	WASHER	2	*					411F0500
25	5461 - F06 - 00X - XX	WASHER/M6	2	*					461F0600

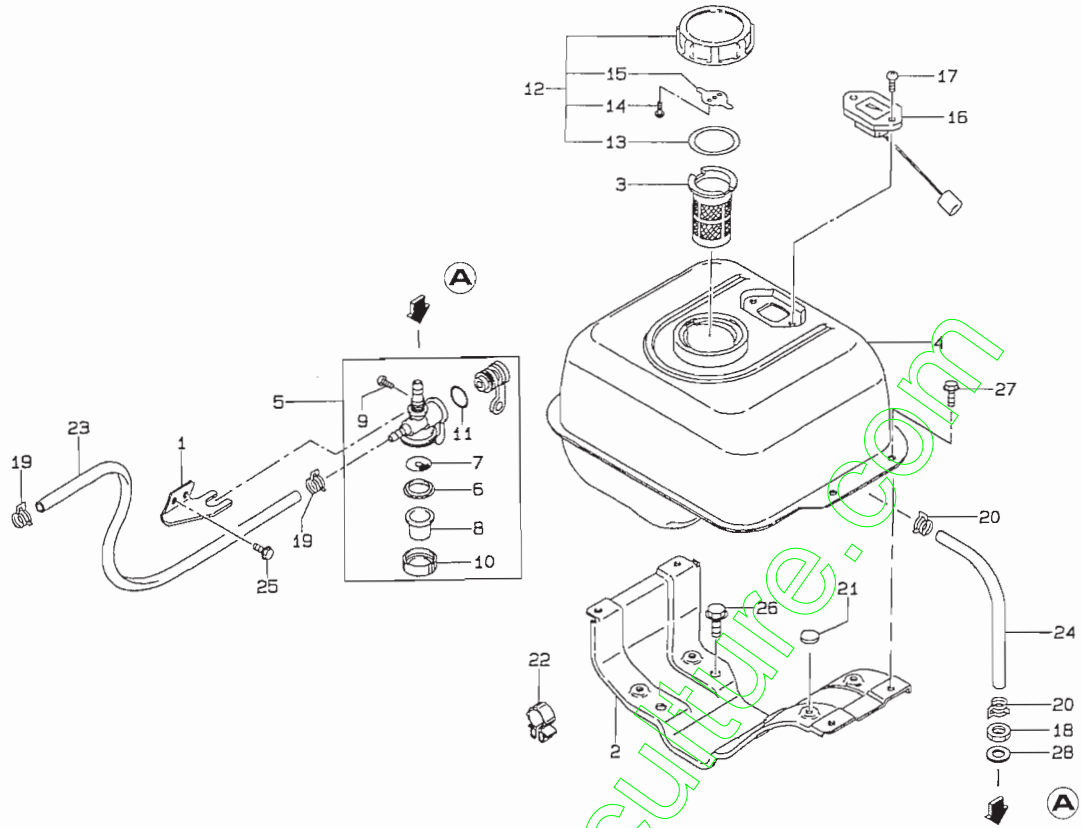
FIG. 11 AIR FILTER/MUFFLER SYSTEM (2)



5211-009B

KEY	PART CODE	DESCRIPTION	QTY	TYPE OF MODEL		I T C	C O L	G R P	REMARKS
				FE161G 7X	FE161G 8X				
1	5110-102-459-XX	FILTER ASSY AIR	1		*				110102459
2	5110-112-241-XX	CASE/AIR FILTER	1		*				110112241
3	5110-122-325-XX	CAP,AIR FILTER	1		*				110122325
4	5110-132-132-XX	ELEMENT/AIR FILTER	1		*				110132132
5	5110-132-133-XX	ELEMENT/AIR FILTER	1		*				110132133
6	5110-122-304-XX	CAP	1		*				110122304
7	5110-602-037-XX	GASKET/MUFFLER	1		*				110602037
8	5110-602-049-XX	GASKET/AIR FILTER	1		*				110602049
9	5131-832-527-XX	PLATE	1		*				131832527
10	5180-492-202-XX	PIPE/EXHAUST	1		*				180492202
11	5180-772-096-XX	ARRESTER/SPARK	1		*				180772096
12	5144-011-341-AX	PIPE	1		*				3144011341A
13	5490-702-572-XX	MUFFLER COMP	1		*				490702572
14	5491-062-506-XX	COVER/MUFFLER	1		*				491062506
15	5491-062-509-XX	COVER/MUFFLER	1		*				491062509
16	5591-562-242-XX	PIPE/TAIL	1		*				591562242
17	5920-092-307-XX	SCREW	7		*				920092307
18	5920-092-322-XX	SCREW	6		*				920092322
19	5920-151-193-XX	NUT	2		*				920151193
20	5921-442-297-XX	SPRING	1		*				921442297
21	5921-502-226-XX	BOLT	2		*				921502226
22	5921-902-043-XX	TUBE	1		*				921902043
23	5130-B08-16X-XX	BOLT/M8X16	1		*				130B0816
24	5171-G06-16X-XX	STUD	2		*				171G0616
25	5311-R06-00X-XX	NUT/M6	2		*				311R0600

FIG. 13 FUEL FILTER SYSTEM (2)



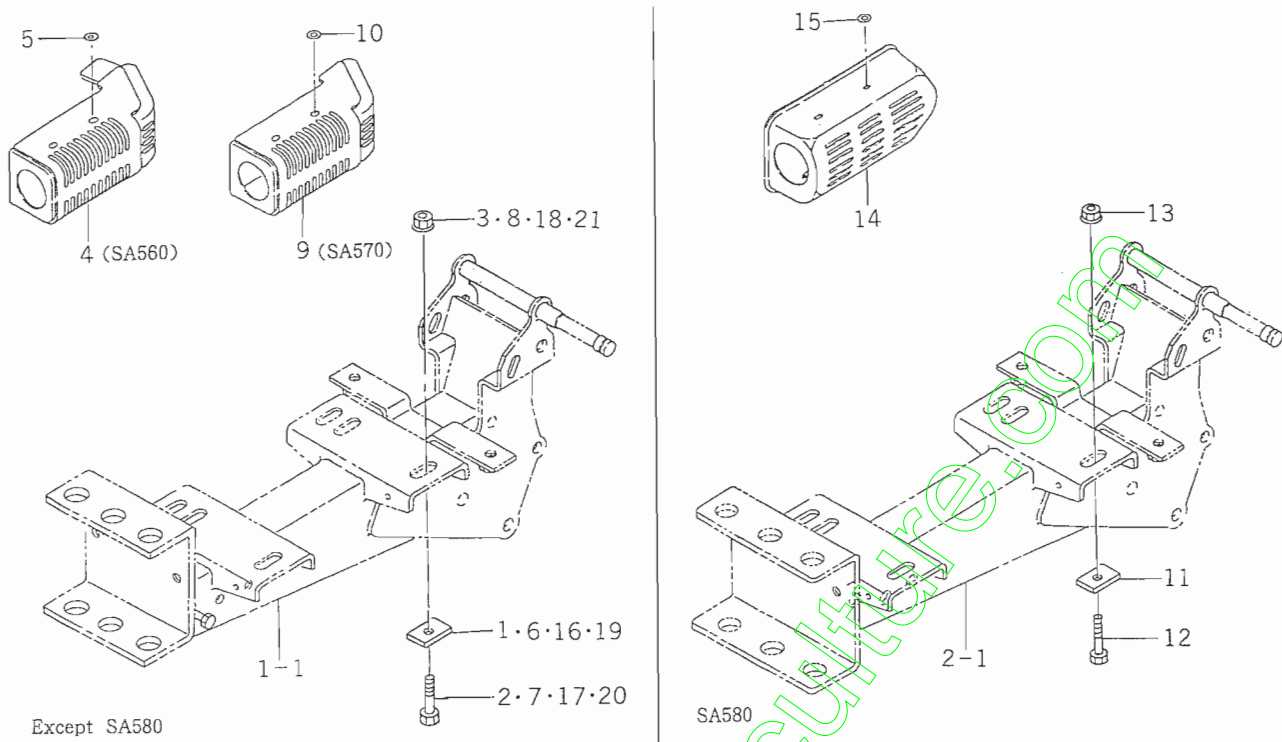
5211-010B

KEY	PART CODE	DESCRIPTION	QTY	TYPE OF MODEL		I T C	C O L	G R P	REMARKS
				FE161G 7X	FE161G 8X				
1	5110 - 472 - 001 - 9H	BRACKET	1		*				1104720019H
2	5205 - 221 - 98X - NX	BRACKET/TANK	1		*				320522198XN
3	5158 - 016 - 661 - FX	FILTER,FUEL	1		*				3158016661F
4	5510 - 012 - 253 - XN	FUEL/TANK COMP	1		*				510012253XN
5	5510 - 232 - 131 - XX	TAP ASSY	1		*				510232131
6	5136 - 506 - 518 - 02	GASKET	1		*				313650651802
7	5490 - 192 - 095 - XX	FILTER/FUEL	1		*				490192095
8	5510 - 362 - 063 - XX	POT,FILTER	1		*				510362063
9	5136 - 506 - 517 - 00	SCREW	1		*				313650651700
10	5136 - 506 - 522 - 00	NUT,RING	1		*				313650652200
11	5136 - 506 - 512 - 00	O - RING	1		*				313650651200
12	5510 - 482 - 055 - XX	CAP TANK	1		*				510482055
13	5158 - 016 - 643 - BX	GASKET	1		*				3158016643B
14	5144 - 016 - 732 - AX	SCREW	2		*				3144016732A
15	5158 - 016 - 644 - AX	SPRING	1		*				3158016644A
16	5520 - 052 - 072 - XX	GAUGE,FUEL	1		*				520052072
17	5158 - 016 - 577 - AX	SCREW	2		*				3158016577A
18	5136 - 506 - 527 - 00	NUT	1		*				313650652700
19	5117 - 026 - 812 - AX	CLIP	2		*				3117026812A
20	5166 - 776 - 812 - AX	CLIP	2		*				3166776812A
21	5920 - 752 - 113 - XX	DAMPER	4		*				920752113
22	5921 - 702 - 067 - XX	CLAMP	1		*				921702067
23	5921 - 902 - 040 - XX	TUBE/4X8X180	1		*				921902040
24	5921 - 902 - 094 - XX	TUBE/6X10X215	1		*				921902094
25	5130 - B05 - 08X - XX	BOLT	2		*				130B0508

CHASSIS

www.emc-motoculture.com

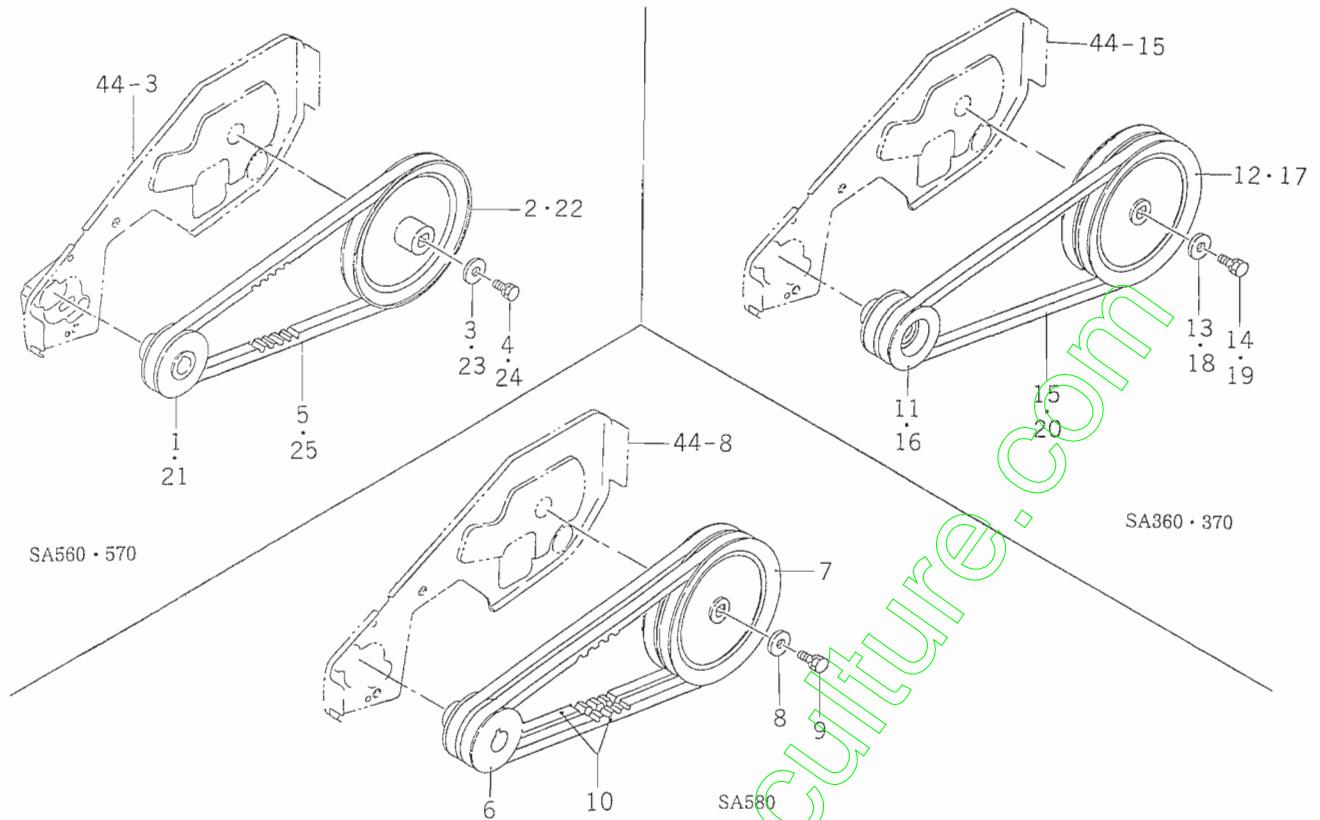
FIG. 4 ENGINE SYSTEM



1110-121C

KEY	PART CODE	DESCRIPTION	QTY	TYPE OF MODEL					I T C	C O L	G R P	REMARKS
				SA360	SA370	SA560	SA570	SA580				
1	1396-121-001-00	PLATE	4			*						
2	V201-460-804-00	BOLT/M 8X40	4			*						
3	V363-260-008-00	NUT, LOCK/M8	4			*						
4	1109-121-220-00	COVER/MUFFLER/4 COMP	1			*						
5	V411-260-006-00	WASHER / M6	4			*						
6	1396-121-001-00	PLATE	4				*					
7	V201-460-804-00	BOLT/M 8X40	4				*					
8	V363-260-008-00	NUT, LOCK/M8	4				*					
9	1110-121-220-00	COVER/MUFFLER/5 COMP	1				*					
10	V411-260-006-00	WASHER / M6	4				*					
11	1396-121-001-00	PLATE	4					*				
12	V201-460-804-00	BOLT/M 8X40	4					*				
13	V363-260-008-00	NUT, LOCK/M8	4					*				
14	1110-121-001-00	COVER/MUFFLER/77	1					*				
15	V411-260-006-00	WASHER / M6	2					*				
16	1396-121-001-00	PLATE	4	*								
17	V201-460-804-00	BOLT/M 8X40	4	*								
18	V363-260-008-00	NUT, LOCK/M8	4	*								
19	1396-121-001-00	PLATE	4		*							
20	V201-460-804-00	BOLT/M 8X40	4		*							
21	V363-260-008-00	NUT, LOCK/M8	4		*							

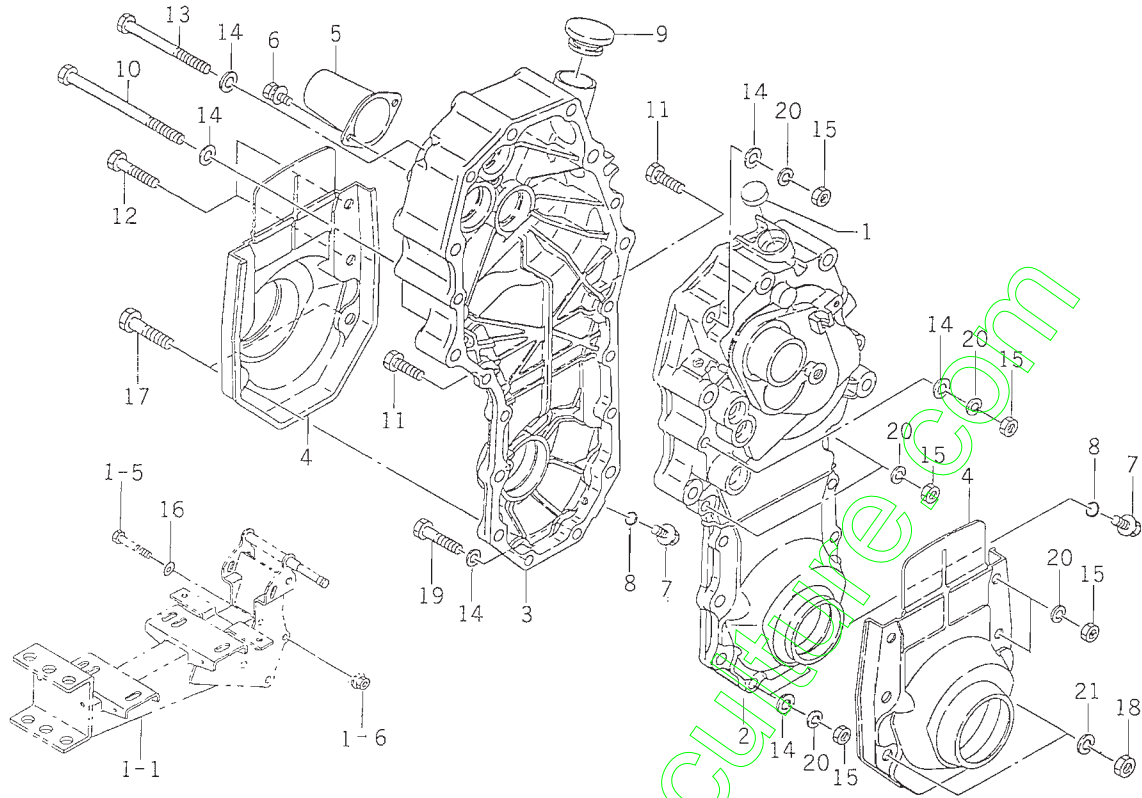
FIG. 6 PULLEY SYSTEM



1110-201

KEY	PART CODE	DESCRIPTION	QTY	TYPE OF MODEL					I T C	C O L	G R P	REMARKS
				SA360	SA370	SA560	SA570	SA580				
1	1110-201-001-00	PULLEY/VB073	1				*					
2	1110-201-200-00	PULLEY/VB169 COMP	1				*					
3	1324-205-002-00	WASHER, FOLLOWER	1				*					
4	V211-260-802-00	BOLT, SEMS (S)	1				*					
5	1110-201-002-00	BELT/VB038	1				*					
6	1110-201-003-00	PULLEY/V2B073	1					*				
7	1110-201-210-00	PULLEY/V2B169 COMP	1					*				
8	1324-205-002-00	WASHER, FOLLOWER	1					*				
9	V211-260-802-00	BOLT, SEMS (S)	1					*				
10	1110-201-002-00	BELT/VB038	2					*				
11	1110-201-006-00	PULLEY/V2B073/095	1	*								
12	1110-201-230-00	PULLEY/V2B169/148	1	*								
13	1324-205-002-00	WASHER, FOLLOWER	1	*								
14	V211-260-802-00	BOLT, SEMS (S)	1	*								
15	1397-201-002-00	BELT/VB038	1	*								
16	1110-201-007-00	PULLEY/V2B073/095	1		*							
17	1110-201-230-00	PULLEY/V2B169/148	1		*							
18	1324-205-002-00	WASHER, FOLLOWER	1		*							
19	V211-260-802-00	BOLT, SEMS (S)	1		*							
20	1110-201-002-00	BELT/VB038	1		*							
21	1109-201-001-00	PULLEY/VB073	1			*						
22	1110-201-200-00	PULLEY/VB169 COMP	1			*						
23	1324-205-002-00	WASHER, FOLLOWER	1			*						
24	V211-260-802-00	BOLT, SEMS (S)	1			*						
25	1397-201-002-00	BELT/VB038	1			*						

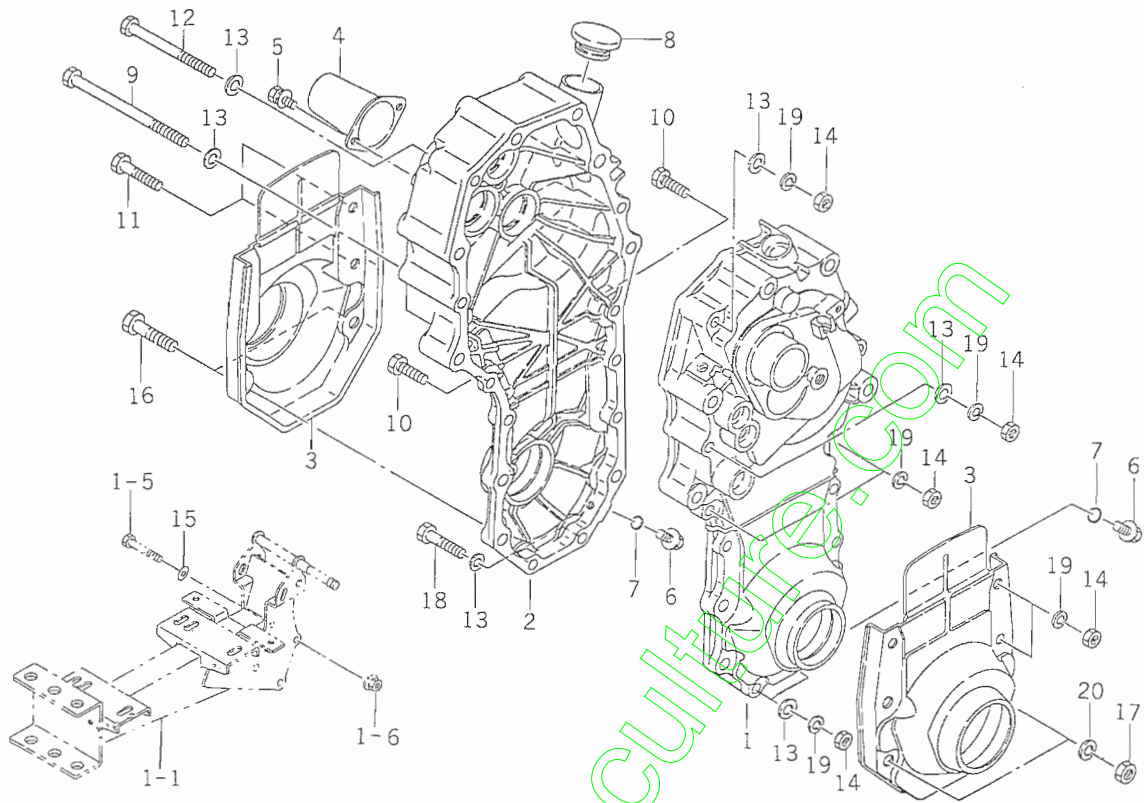
FIG. 10 CASE (MISSION) SYSTEM (SA360,370 TYPE)



1398-216A

KEY	PART CODE	DESCRIPTION	QTY	TYPE OF MODEL					I T C	C O L	G R P	REMARKS
				SA360	SA370	SA560	SA570	SA580				
1	1398-216-005-00	CAP, SEAL/25X7	1	*	*							
2	1110-216-005-00	CASE/TRANSMISSION/LH	1	*	*							
3	1110-216-006-00	CASE/TRANSMISSION/RH	1	*	*							
4	1396-216-200-00	COVER, CASE	2	*	*							
5	1364-216-003-10	CAP, SHAFT/24X50	1	*	*							
6	V210-360-601-00	BOLT, SEMS/M6X10	2	*	*							
7	1105-216-005-00	BOLT	2	*	*							
8	V720-101-900-80	O-RING/P 8	2	*	*							
9	7954-205-101-00	CAP, OIL/30	1	*	*							
10	V201-260-814-00	BOLT/M 8X140	1	*	*							
11	V201-260-803-00	BOLT/M 8X30	2	*	*							
12	V201-260-804-50	BOLT/M 8X45	2	*	*							
13	V201-260-810-00	BOLT/M 8X100	1	*	*							
14	V411-260-008-00	WASHER, PL/M 8	8	*	*							
15	V304-260-008-00	NUT/M 8	8	*	*							
16	1373-121-001-00	WASHER/9X22X2	1	*	*							
17	V201-261-004-50	BOLT/M10X45	2	*	*							
18	V304-260-010-00	NUT	2	*	*							
19	V201-260-804-00	BOLT/M 8X40	2	*	*							
20	V401-160-008-00	WASHER, SP/M 8	8	*	*							
21	V401-160-010-00	WASHER, SP/M10	2	*	*							

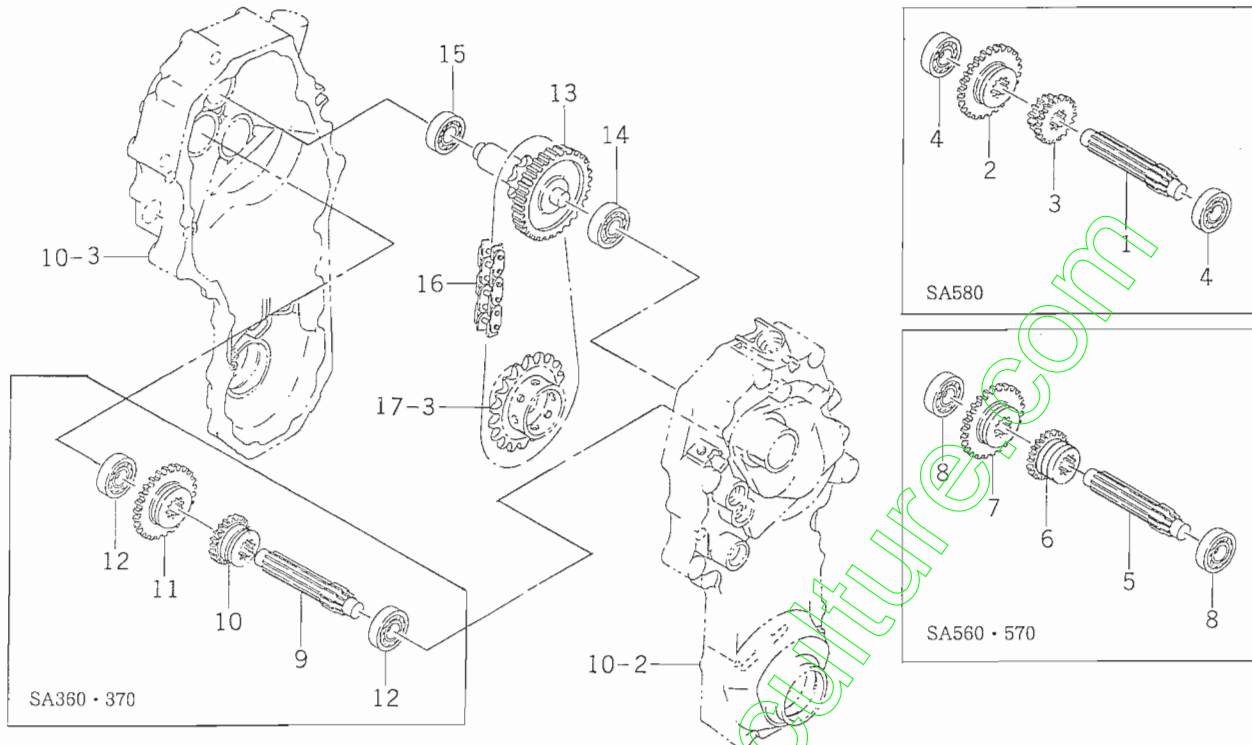
FIG. 11 CASE (MISSION) SYSTEM (F TYPE)



111C-216B

KEY	PART CODE	DESCRIPTION	QTY	TYPE OF MODEL					I T C	C O L	G R P	REMARKS
				SA360	SA370	SA560	SA570	SA580				
1	1110-216-001-00	CASE/TRANSMISSION/LH	1	*	*	*	*	*				
2	1110-216-002-00	CASE/TRANSMISSION/RH	1	*	*	*	*	*				
3	1396-216-200-00	COVER, CASE	2	*	*	*	*	*				
4	1364-216-003-10	CAP, SHAFT/24X50		*	*	*	*	*				
5	V210-360-601-00	BOLT, SEMS/M6X10	2	*	*	*	*	*				
6	1105-216-005-00	BOLT	2	*	*	*	*	*				
7	V720-101-900-80	O-RING/P 8	2	*	*	*	*	*				
8	7954-205-101-00	CAP, OIL/30	1	*	*	*	*	*				
9	V201-260-814-00	BOLT/M 8X140	1	*	*	*	*	*				
10	V201-260-803-00	BOLT/M 8X30	2	*	*	*	*	*				
11	V201-260-804-50	BOLT/M 8X45	2	*	*	*	*	*				
12	V201-260-810-00	BOLT/M 8X100	1	*	*	*	*	*				
13	V411-260-008-00	WASHER, PL/M 8	8	*	*	*	*	*				
14	V304-260-008-00	NUT/M 8	8	*	*	*	*	*				
15	1373-121-001-00	WASHER, 9X22X2	1	*	*	*	*	*				
16	V201-261-004-50	BOLT/M10X45	2	*	*	*	*	*				
17	V304-260-010-00	NUT	2	*	*	*	*	*				
18	V201-260-804-00	BOLT/M 8X40	2	*	*	*	*	*				
19	V401-160-008-00	WASHER, SP/M 8	8	*	*	*	*	*				
20	V401-160-010-00	WASHER, SP/M10	2	*	*	*	*	*				

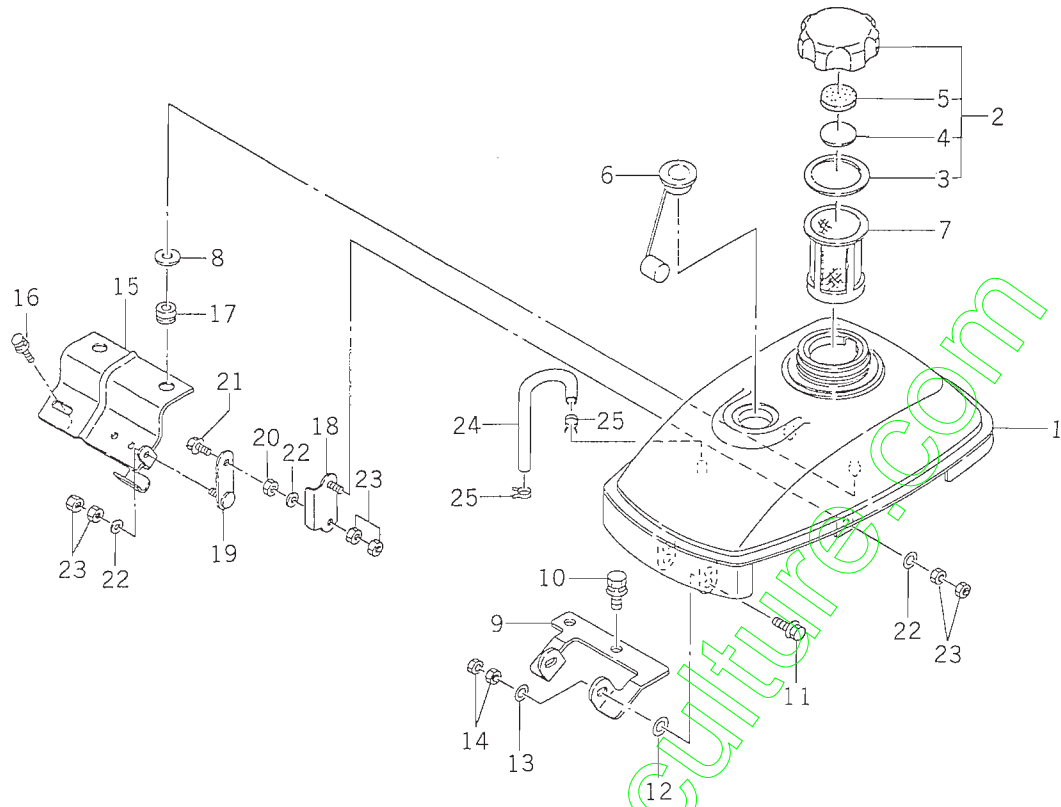
FIG. 16 SHAFT (SHIFT,REDUCTION) SYSTEM



1110-219

KEY	PART CODE	DESCRIPTION	QTY	TYPE OF MODEL					I T C	C O L	G R P	REMARKS
				SA360	SA370	SA560	SA570	SA580				
1	1110-219-001-00	SHAFT/SHIFT	1					*				
2	1396-219-002-10	GEAR, CHANGE/37	1					*				
3	1110-219-002-00	GEAR/SPUR/13-18	1					*				
4	V600-110-620-30	BEARING, RB/6203	2					*				
5	1110-219-001-00	SHAFT/SHIFT	1			*	*					
6	1110-219-005-00	GEAR/SPUR/21	1			*	*					
7	1396-219-007-00	GEAR/SPUR 32	1			*	*					
8	V600-110-620-30	BEARING, RB/6203	2			*	*					
9	1110-219-001-00	SHAFT/SHIFT	1	*	*							
10	1110-219-003-00	GEAR/SPUR/23	1	*	*							
11	1110-219-004-00	GEAR/SPUR/31	1	*	*							
12	V600-110-620-30	BEARING, RB/6203	2	*	*							
13	1110-221-200-00	SHAFT/REDUCTION COMP	1	*	*	*	*	*				
14	V600-110-630-20	BEARING, RB/6302	1	*	*	*	*	*				
15	V600-110-620-30	BEARING, RB/6203	1	*	*	*	*	*				
16	1110-221-001-00	CHAIN/ROLLERS525SHCP2	1	*	*	*	*	*				

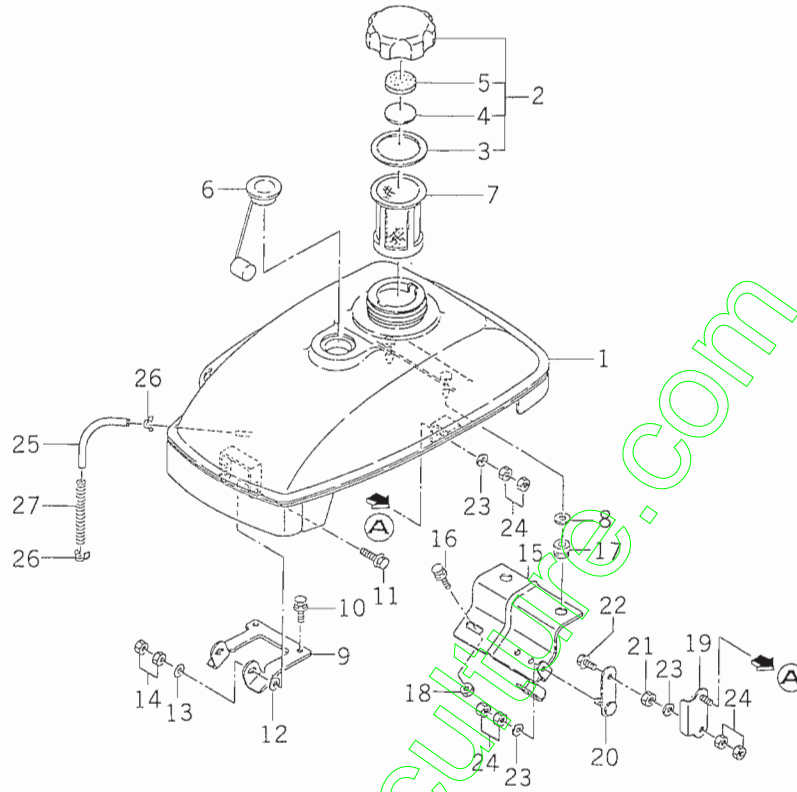
FIG. 42 FUEL TANK (55) SYSTEM (SA570 TYPE)



1110-606

KEY	PART CODE	DESCRIPTION	QTY	TYPE OF MODEL					I T C	C O L	G R P	REMARKS
				SA360	SA370	SA560	SA570	SA580				
1	1110-606-200-10	TANK/FUEL/A COMP	1				*					
2	1105-608-250-00	CAP/TANK ASSY	1				*					
3	1105-608-252-00	GASKET/TANK CAP	1				*					
4	1105-608-253-00	PLATE/TANK CAP	1				*					
5	1105-608-254-00	BREATHER/TANK CAP	1				*					
6	1104-606-230-10	GAUGE/FUEL ASSY	1				*					
7	1105-608-004-00	FILTER	1				*					
8	1352-601-003-00	SUPPORT	2				*					
9	1110-606-004-00	SUPPORT/FRONT/55	1				*					
10	V211-360-801-60	BOLT, SEMS (SP)	2				*					
11	V210-360-602-00	BOLT/SP	2				*					
12	2704-301-027-00	WASHER/NYLON	2				*					
13	V411-260-006-00	WASHER / M6	2				*					
14	V301-260-006-00	NUT/M 6	4				*					
15	1110-606-290-00	SUPPORT/REAR/55 COMP	1				*					
16	V211-360-801-60	BOLT, SEMS (SP)	2				*					
17	3614-321-001-00	RUBBER, LOCK	2				*					
18	1110-606-260-00	PLATE/LINK COMP	1				*					
19	1110-606-270-00	PLATE/IR/20X58 COMP	1				*					
20	V304-260-008-00	NUT/M 8	1				*					
21	V210-360-602-50	BOLT/SP	1				*					
22	2704-301-027-00	WASHER/NYLON	3				*					
23	V301-260-006-00	NUT/M 6	6				*					
24	1399-606-001-00	HOSE/FUEL	1				*					
25	3759-164-005-00	CLIP, HOSE/D=11	2				*					

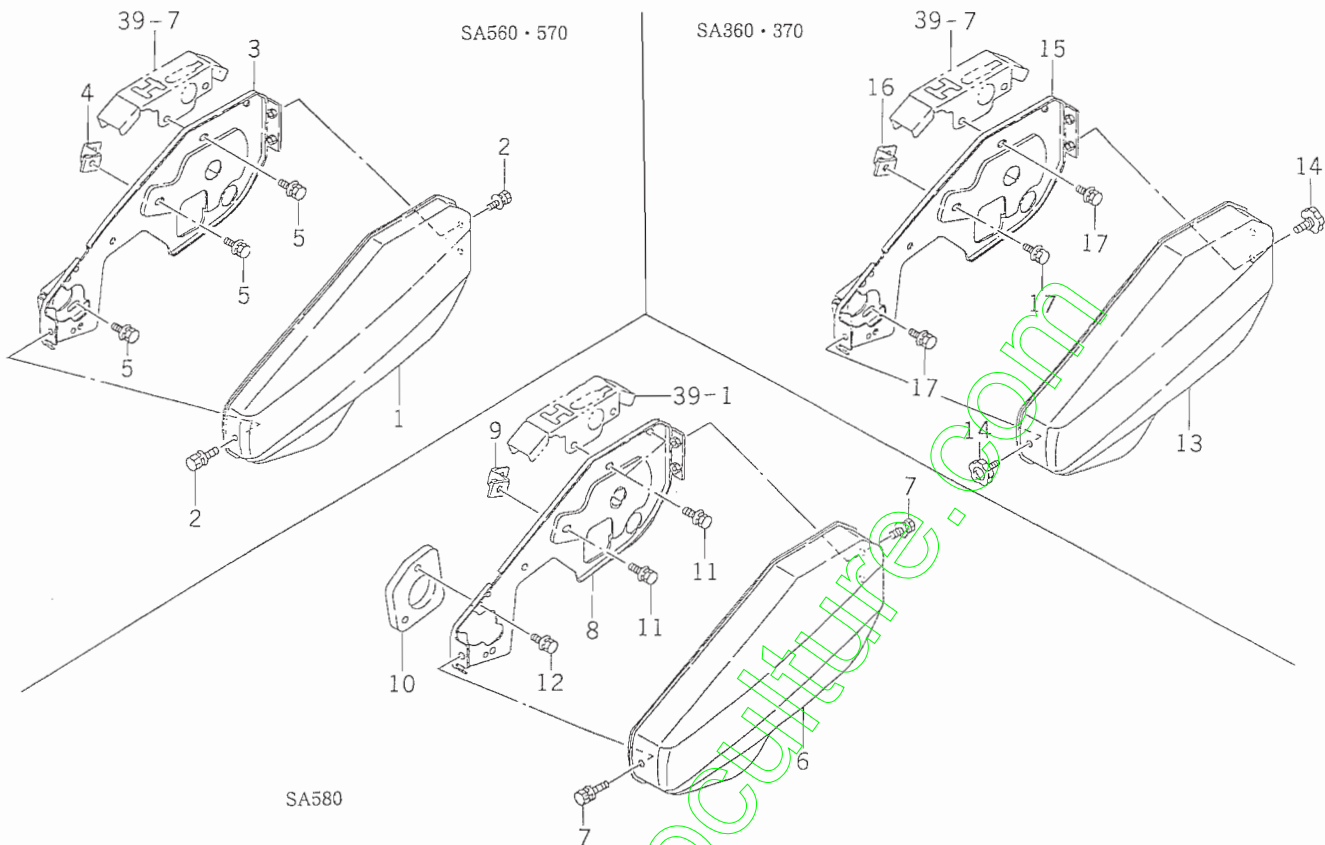
FIG. 43 FUEL TANK (77) SYSTEM (SA580 TYPE)



1110-608A

KEY	PART CODE	DESCRIPTION	QTY	TYPE OF MODEL					I T C	C O L	G R P	REMARKS
				SA360	SA370	SA560	SA570	SA580				
1	1110-606-230-10	TANK/FUEL/B COMP	1					*				
2	1105-608-250-00	CAP/TANK ASSY	1					*				
3	1105-608-252-00	GASKET/TANK CAP	1					*				
4	1105-608-253-00	PLATE/TANK CAP	1					*				
5	1105-608-254-00	BREATHER/TANK CAP	1					*				
6	1104-606-230-10	GAUGE/FUEL ASSY	1					*				
7	1105-608-004-00	FILTER	1					*				
8	1352-601-003-00	SUPPORT	2					*				
9	1110-606-001-00	SUPPORT/FRONT/77	1					*				
10	V211-360-801-60	BOLT, SEMS (SP)	2					*				
11	V210-360-602-00	BOLT/SP	2					*				
12	2704-301-027-00	WASHER/NYLON	2					*				
13	V411-260-006-00	WASHER / M6	2					*				
14	V301-260-006-00	NUT/M 6	4					*				
15	1110-606-280-00	SUPPORT/REAR/77 COMP	1					*				
16	V211-360-802-50	BOLT, SEMS	2					*				
17	3614-321-001-00	RUBBER, LOCK	2					*				
18	V304-260-012-00	NUT/M12	2					*				
19	1110-606-260-00	PLATE/LINK COMP	1					*				
20	1110-606-270-00	PLATE/IR/20X58 COMP	1					*				
21	V304-260-008-00	NUT/M 8	1					*				
22	V210-360-602-50	BOLT/SP	1					*				
23	2704-301-027-00	WASHER/NYLON	3					*				
24	V301-260-006-00	NUT/M 6	6					*				
25	1110-606-003-00	HOSE/FUEL/B	1					*				

FIG. 44 COVER (BELT) SYSTEM



111C-611

KEY	PART CODE	DESCRIPTION	QTY	TYPE OF MODEL					I T C	C O L	G R P	REMARKS
				SA360	SA370	SA560	SA570	SA580				
1	1110-611-001-00	COVER/BELT/A/55	1			*	*					
2	V210-360-601-60	BOLT (SP) /M6X16	3			*	*					
3	1110-611-210-10	COVER/BELT/B/55 COMP	1			*	*					
4	1102-611-210-00	STAY, COVER(A), COMP	1			*	*					
5	V211-360-801-60	BOLT, SEMS (SP)	5			*	*					
6	1110-611-003-00	COVER/BELT/A/77	1					*				
7	V210-360-601-60	BOLT (SP) /M6X16	3					*				
8	1110-611-230-10	COVER/BELT/B/77 COMP	1					*				
9	1102-611-210-00	STAY, COVER(A), COMP	1					*				
10	1110-611-002-00	PLATE/SPACER	1					*				
11	V211-360-801-60	BOLT, SEMS (SP)	3					*				
12	V211-360-802-50	BOLT, SEMS	2					*				
13	1110-611-003-00	COVER/BELT/A/77	1	*	*							
14	1102-611-006-00	KNOB, SET/M6X15	2	*	*							
15	1110-611-210-10	COVER/BELT/B/55 COMP	1	*	*							
16	1102-611-210-00	STAY, COVER(A), COMP	1	*	*							
17	V211-360-801-60	BOLT, SEMS (SP)	5	*	*							

FIG. 46 LABEL (MODEL) SYSTEM



1·13



2·5·8·11·14·17·20



3·6·9·12·15·18·21



4



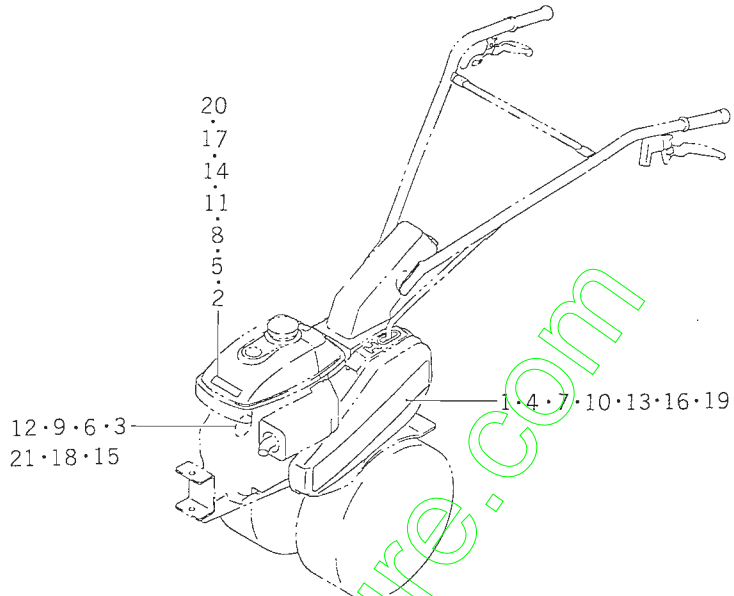
7



10



16·19

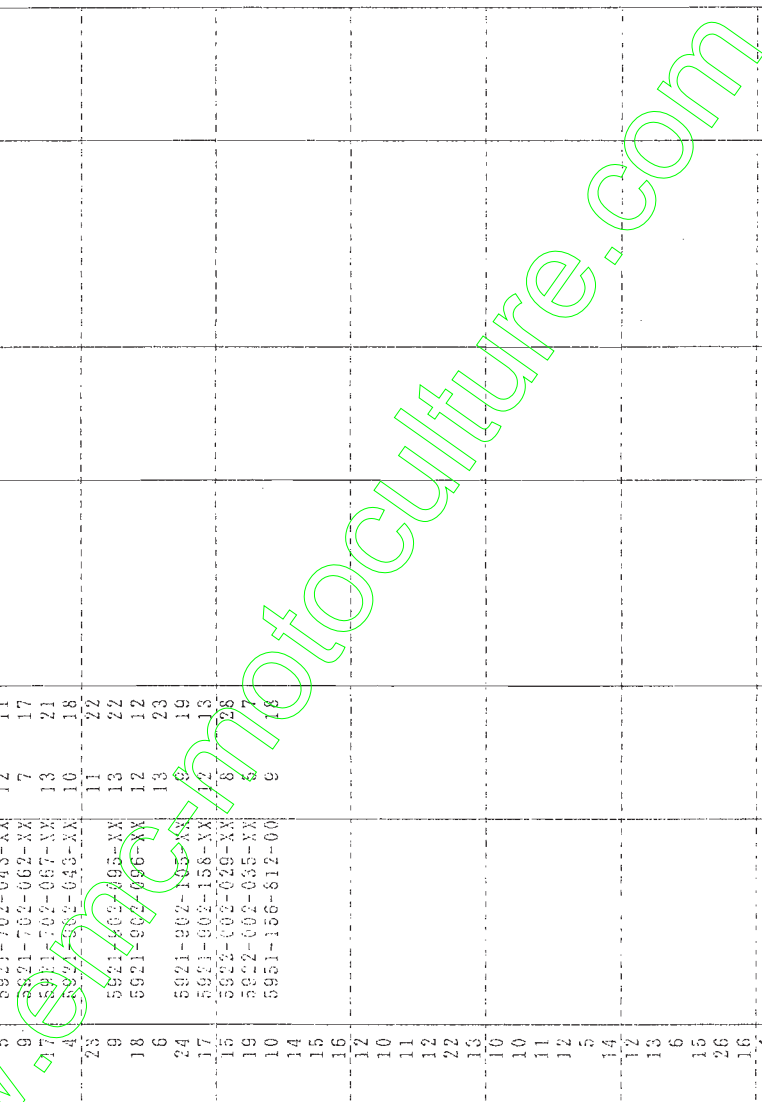


1110-901D

KEY	PART CODE	DESCRIPTION	QTY	TYPE OF MODEL					I T C	C O L	G R P	REMARKS
				SA360	SA370	SA560	SA570	SA580				
1	1110-901-013-00	ORNAMENT/SA360	1	*								
2	1107-902-001-10	ORNAMENT/ISEKI	1	*								
3	1107-902-002-10	ORNAMENT/OHV	1	*								
4	1110-901-015-00	ORNAMENT/SA560	1			*						
5	1107-902-001-10	ORNAMENT/ISEKI	1			*						
6	1107-902-002-10	ORNAMENT/OHV	1			*						
7	1110-901-017-00	ORNAMENT/SA570	1				*					
8	1107-902-001-10	ORNAMENT/ISEKI	1				*					
9	1107-902-002-10	ORNAMENT/OHV	1				*					
10	1110-901-019-00	ORNAMENT/SA580	1					*				
11	1107-902-001-10	ORNAMENT/ISEKI	1					*				
12	1107-902-002-10	ORNAMENT/OHV	1					*				
13	1110-901-013-00	ORNAMENT/SA360	1	*								
14	1107-902-001-10	ORNAMENT/ISEKI	1	*								
15	1107-902-002-10	ORNAMENT/OHV	1	*								
16	1110-901-023-00	ORNAMENT/SA370	1		*							
17	1107-902-001-10	ORNAMENT/ISEKI	1		*							
18	1107-902-002-10	ORNAMENT/OHV	1		*							
19	1110-901-023-00	ORNAMENT/SA370	1		*							
20	1107-902-001-10	ORNAMENT/ISEKI	1		*							
21	1107-902-002-10	ORNAMENT/OHV	1		*							

PART CODE	REF . NO	PART CODE	REF . NO	PART CODE	REF . NO	PART CODE	REF . NO
5110-R06-06X-XX	10	5130-F08-45X-XX	1	5158-016-625-AX	13	5391-802-779-XX	8
5110-042-113-XX	1	5158-016-182-XX	2	5158-016-643-BX	1	5391-802-792-XX	8
5110-082-092-XX	1	5180-021-005-XX	2	5158-016-644-AX	13	5410-B06-00X-XX	1
5110-092-175-XX	4	5180-089-025-XX	2	5158-016-661-FX	12	5410-B10-00X-XX	12
5110-097-918-XX	3	5180-283-086-XX	2	5160-602-160-XX	9	5411-F05-00X-XX	13
5110-102-459-XX	10	5180-292-116-XX	3	5160-732-156-XX	9		10
		5180-702-083-XX	3	5161-152-091-XX	4		24
5110-112-241-XX	10	5180-703-084-XX	14	5161-692-116-XX	8		11
		5181-162-072-XX	3	5161-832-001-XX	9	5461-F06-00X-XX	10
5110-122-304-XX	14	5181-553-082-XX	14	5161-842-002-XX	9		25
5110-122-325-XX	10	5181-662-330-XX	8	5161-852-007-XX	9	5490-156-103-XX	11
		5181-662-343-XX	8	5161-862-011-XX	9	5490-156-120-XX	1
5110-132-132-XX	11	5181-662-445-VX	10	5161-862-012-XX	9	5490-192-095-XX	7
		5181-662-371-XX	8	5166-776-812-AX	13		12
5110-132-133-XX	10	5181-662-367-XX	4	5171-G06-16X-XX	2	5490-462-098-XX	8
		5181-662-382-XX	10		9	5490-702-379-9V	10
5110-222-065-9H	1	5182-518-645-XX	11	5172-G06-18X-XX	9	5490-702-565-XX	11
5110-462-142-XX	7	5186-013-459-BX	14	5172-G06-73X-XX	9	5490-782-064-XX	3
5110-472-073-XX	12	5186-504-231-00	11	5172-708-419-AX	7	5490-802-163-XX	14
		5186-508-512-00	12	5180-492-220-XX	10	5490-882-419-XX	14
5110-482-023-XX	8		12		10	5490-892-347-9H	6
5110-602-037-XX	10	5186-508-511-00	13		11	5490-892-351-9H	6
		5186-508-516-02	12		11	5490-892-362-9H	5
5110-602-044-XX	1		13		10	5490-892-363-9H	5
5110-602-049-XX	10		13		3	5491-032-124-XX	8
			11		1	5491-062-506-XX	11
5110-602-051-XX	9	5188-508-522-00	12		14	5491-062-509-XX	11
5110-602-291-XX	1		13		26	5491-102-076-XX	8
5117-026-812-AX	12	5188-508-527-00	12		2	5491-186-075-XX	3
			13		5	5491-196-122-XX	2
5118-200-900-AX	16		13		10	5491-202-241-XX	1
5120-042-098-XX	3	5188-592-080-XX	1		2	5491-212-167-XX	9
5120-052-087-XX	3	5188-011-341-AX	10		3	5510-012-254-XX	13
5120-092-062-XX	3		11		5	5510-232-131-XX	12
5120-162-059-XX	3	5144-013-121-BX	8		7	5510-362-063-XX	12
5120-322-064-XX	3	5144-013-135-AX	8		8	5510-462-066-XX	13
5130-B05-06X-XX	12	5144-015-363-AX	8		10	5511-005-25X-XX	13
		5144-015-383-AX	8		22	5511-005-12X-XX	16
5130-B06-06X-XX	3	5144-016-338-AX	8		7	5554-A06-00X-XX	8
		5144-016-339-AX	8		7	5554-A06-00X-XX	8
5130-B08-12X-XX	10	5144-016-341-AX	8		7	5560-302-423-XX	15
5130-B08-16X-XX	5	5144-016-343-AX	10		21	5560-312-458-XX	13
		5144-016-344-AX	14		7	5590-412-070-XX	5
5130-B08-18X-XX	11	5144-016-345-AX	10		8	5590-412-070-XX	5
5130-B50-25X-XX	17	5144-016-346-AX	16		10	5590-462-862-XX	2
5130-G06-30X-XX	1	5144-016-347-AX	16		7	5590-662-618-XX	5
		5144-016-348-AX	16		8	5590-662-631-XX	5
		5144-016-349-AX	16		6		
		5144-016-350-AX	16		11		
		5144-016-351-AX	16		25		
		5144-016-352-AX	16		20		
		5144-016-353-AX	16		3		
		5144-016-354-AX	16		6		
		5144-016-355-AX	16		8		
		5144-016-356-AX	16		17		
		5144-016-357-AX	16		9		
		5144-016-358-AX	16		2		
		5144-016-359-AX	16		9		
		5144-016-360-AX	16		22		
		5144-016-361-AX	16		8		
		5144-016-362-AX	16		3		
		5144-016-363-AX	16		15		
		5144-016-364-AX	16		17		
		5144-016-365-AX	16		1		
		5144-016-366-AX	16		9		
		5144-016-367-AX	16		2		
		5144-016-368-AX	16		9		
		5144-016-369-AX	16		22		
		5144-016-370-AX	16		8		
		5144-016-371-AX	16		3		
		5144-016-372-AX	16		15		
		5144-016-373-AX	16		17		
		5144-016-374-AX	16		1		
		5144-016-375-AX	16		1		
		5144-016-376-AX	16		17		
		5144-016-377-AX	16		1		
		5144-016-378-AX	16		1		
		5144-016-379-AX	16		17		
		5144-016-380-AX	16		1		
		5144-016-381-AX	16		1		
		5144-016-382-AX	16		17		
		5144-016-383-AX	16		1		
		5144-016-384-AX	16		1		
		5144-016-385-AX	16		17		
		5144-016-386-AX	16		1		
		5144-016-387-AX	16		1		
		5144-016-388-AX	16		17		
		5144-016-389-AX	16		1		
		5144-016-390-AX	16		1		
		5144-016-391-AX	16		17		
		5144-016-392-AX	16		1		
		5144-016-393-AX	16		1		
		5144-016-394-AX	16		17		
		5144-016-395-AX	16		1		
		5144-016-396-AX	16		1		
		5144-016-397-AX	16		17		
		5144-016-398-AX	16		1		
		5144-016-399-AX	16		1		
		5144-016-400-AX	16		17		
		5144-016-401-AX	16		1		
		5144-016-402-AX	16		1		
		5144-016-403-AX	16		17		
		5144-016-404-AX	16		1		
		5144-016-405-AX	16		1		
		5144-016-406-AX	16		17		
		5144-016-407-AX	16		1		
		5144-016-408-AX	16		1		
		5144-016-409-AX	16		17		
		5144-016-410-AX	16		1		
		5144-016-411-AX	16		1		
		5144-016-412-AX	16		17		
		5144-016-413-AX	16		1		
		5144-016-414-AX	16		1		
		5144-016-415-AX	16		17		
		5144-016-416-AX	16		1		
		5144-016-417-AX	16		1		
		5144-016-418-AX	16		17		
		5144-016-419-AX	16		1		
		5144-016-420-AX	16		1		
		5144-016-421-AX	16		17		
		5144-016-422-AX	16		1		
		5144-016-423-AX	16		1		
		5144-016-424-AX	16		17		
		5144-016-425-AX	16		1		
		5144-016-426-AX	16		1		
		5144-016-427-AX	16		17		
		5144-016-428-AX	16		1		
		5144-016-429-AX	16		1		
		5144-016-430-AX	16		17		
		5144-016-431-AX	16		1		
		5144-016-432-AX	16		1		
		5144-016-433-AX	16		17		
		5144-016-434-AX	16		1		
		5144-016-435-AX	16		1		
		5144-016-436-AX	16		17		
		5144-016-437-AX	16		1		
		5144-016-438-AX	16		1		
		5144-016-439-AX	16		17		
		5144-016-440-AX	16		1		
		5144-016-441-AX	16		1		
		5144-016-442-AX	16		17		
		5144-016-443-AX	16		1		
		5144-016-444-AX	16		1		
		5144-016-445-AX	16		17		
		5144-016-446-AX	16		1		
		5144-016-447-AX	16		1		
		5144-016-448-AX	16		17		
		5144-016-449-AX	16		1		
		5144-016-450-AX	16		1		
		5144-016-451-AX	16		17		
		5144-016-452-AX	16		1		
		5144-016-453-AX	16		1		
		5144-016-454-AX	16		17		
		5144-016-455-AX	16		1		
		5144-016-456-AX	16		1		
		5144-016-457-AX	16		17		
		5144-016-458-AX	16		1		
		5144-016-459-AX	16		1		
		5144-016-460-AX	16		17		
		5144-016-461-AX	16		1		
		5144-016-462-AX	16		1		
		5144-016-463-AX	16		17		
		5144-016-464-AX	16		1		
		5144-016-465-AX	16		1		
		5144-016-466-AX	16		17		
		5144-016-467-AX	16		1		
		5144-016-468-AX	16		1		
		5144-016-469-AX	16		17		
		5144-016-470-AX	16		1		
		5144-016-471-AX	16		1		
		5144-016-472-AX	16		17		
		5144-016-473-AX	16		1		
		5144-016-474-AX	16		1		
		5144-016-475-AX	16		17		
		5144-016-476-AX	16		1		
		5144-016-477-AX	16		1		
		5144-016-478-AX	16		17		
		5144-016-479-AX	16		1		
		5144-016-480-AX	16		1		
		5144-016-481-AX	16		17		
		5144-016-482-AX	16		1		
		5144-016-483-AX	16		1		
		5144-016-484-AX	16		17		
		5144-016-485-AX	16		1		
		514					

PART CODE	REF. NO	PART CODE	REF. NO	PART CODE	REF. NO	PART CODE	REF. NO
5591-012-086-XX	14	5921-044-272-XX	14				
5591-062-119-XX	14	5921-442-297-XX	11				
5591-082-089-XX	10	5921-501-122-XX	2				
5591-064-047-XX	11	5921-501-168-XX	3				
5592-283-257-XX	8	5921-502-220-XX	10				
5601-462-044-XX	7		11				
5920-022-289-XX	8	5921-502-227-XX	8				
5920-022-283-XX	5	5921-502-274-XX	9				
	6	5921-702-043-XX	12				
5920-092-166-XX	7	5921-702-062-XX	7				
5920-092-307-XX	11	5921-702-067-XX	13				
5920-092-308-XX	4	5921-702-067-XX	10				
	8	5921-702-067-XX	11				
5920-092-311-XX	14	5921-702-067-XX	13				
5920-092-322-XX	11	5921-902-096-XX	12				
5920-151-193-XX	5		13				
	8	5921-902-103-XX	19				
	9	5921-902-158-XX	12				
	10	5922-002-028-XX	8				
	11	5922-002-035-XX	5				
	8	5951-156-812-00	9				
5920-152-120-XX	8						
5920-152-240-XX	3						
5920-152-253-XX	3						
5920-222-001-XX	3						
5920-262-304-XX	6						
5920-332-160-XX	14						
5920-360-03X-XX	2						
5920-372-165-XX	7						
5920-372-171-XX	7						
5920-382-077-XX	7						
5920-382-083-XX	2						
5920-431-037-XX	1						
5920-432-122-XX	3						
5920-432-130-XX	3						
5920-552-064-XX	4						
5920-592-156-XX	7						
5920-632-233-XX	9						
5920-642-082-XX	9						
5920-662-263-XX	4						
5920-701-167-XX	7						
5920-712-126-XX	8						
5920-712-135-XX	7						
5921-072-057-XX	16						
5921-102-098-XX	1						
5921-442-049-XX	3						
5921-442-177-XX	14						
5921-442-266-XX	8						
5921-442-270-XX	8						



BP047 5210-097-100-00

*** NUMERICAL INDEX ***

93.07.14

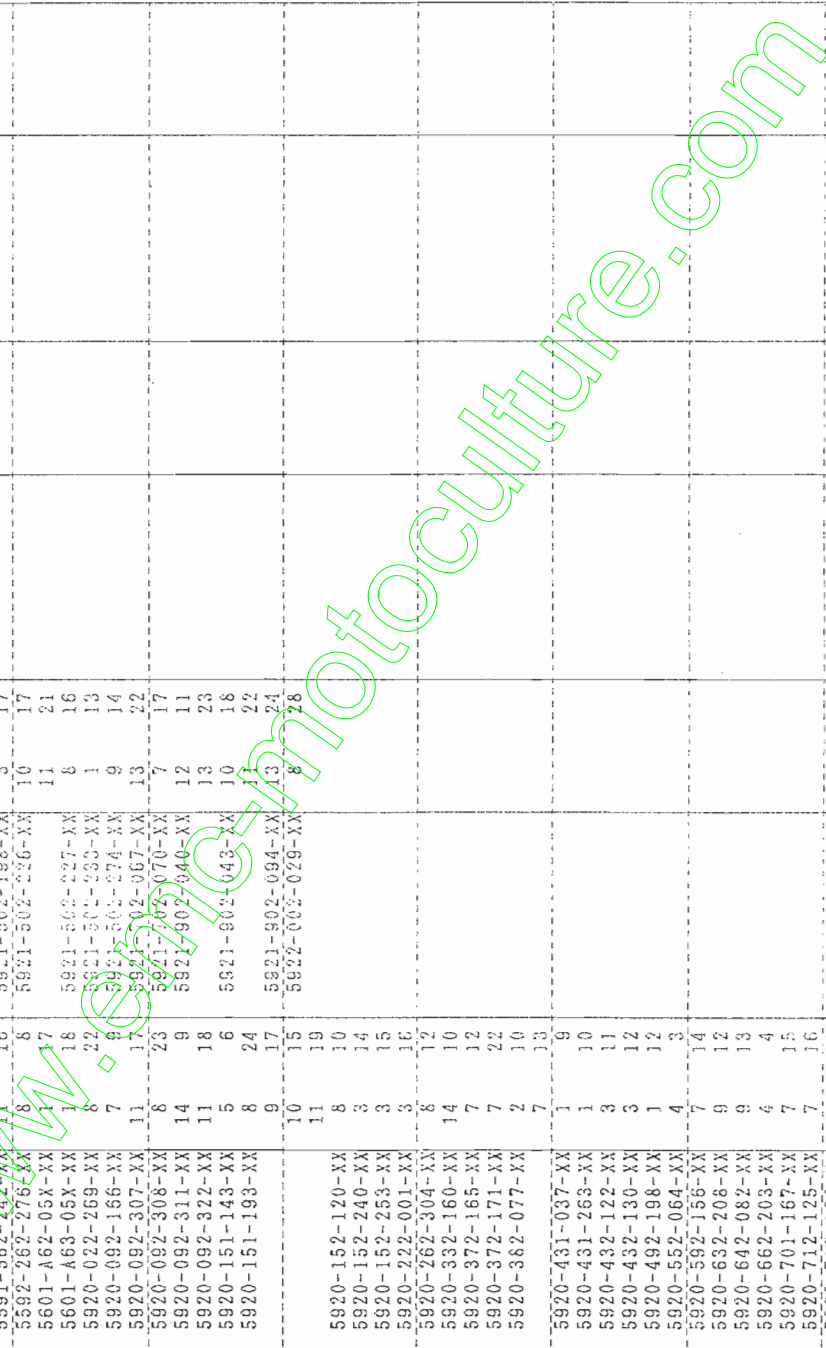
P. 1

PART CODE	REF. NO	PART CODE	REF. NO	PART CODE	REF. NO	PART CODE	REF. NO
5110-B05-22X-XX	7	5131-072-068-XX	2	5224-B04-08X-XX	6	5590-562-845-XX	2
5110-R06-08X-XX	9	5131-162-071-XX	3	5224-B05-10X-XX	10	5590-662-611-XX	5
	9	5131-052-073-XX	11	5230-132-053-XX	8	5591-012-089-XX	11
	1	5131-832-269-XX	1	5230-132-054-XX	8	5591-062-039-XX	11
5110-042-106-XX	2	5131-832-407-XX	2	5230-132-055-XX	8	5591-162-334-XX	11
5110-082-175-XX	4	5132-316-038-XX	5	5260-112-280-XX	6	5591-562-230-9V	9
5110-092-467-XX	9	5133-306-517-00	10	5510-642-053-XX	10	5593-662-065-XX	9
5110-092-859-XX	4	5133-506-317-00	10	5311-B06-00X-XX	7	5703-A07-100-0X	9
5110-092-919-XX	8	5133-506-518-02	10	5311-B06-00X-XX	6	5705-A04-100-0X	10
5110-092-923-XX	3	5136-506-522-00	10	5317-R08-00X-XX	9	5820-022-269-XX	7
5110-092-924-XX	1	5136-506-527-00	10	5320-992-193-XX	11	5920-042-083-XX	1
5110-092-925-XX	9	5136-791-532-00	10	5390-032-076-XX	7	5920-092-306-XX	1
5110-092-927-XX	8	5148-502-094-XX	11	5410-D06-00X-XX	7		6
5110-092-928-XX	8	5148-502-234-XX	6		9	5920-092-322-XX	5
5110-102-438-9H	9	5148-502-234-XX	11	5410-B10-00X-XX	10		9
5110-122-135-9H	9	5148-502-234-XX	11	5411-B06-00X-XX	7	5920-151-193-XX	2
5110-122-316-9X	9	5148-502-234-XX	11	5420-362-060-XX	7		5
5110-122-318-XX	10	5148-502-234-XX	11	5430-582-069-XX	9		9
5110-226-002-XX	1	5151-500-943-00	13	5460-752-086-XX	11		7
5110-472-065-XX	10	5153-408-161-XX	6	5461-F08-00X-XX	9	5920-152-240-XX	3
5115-093-595-00	5	5153-408-167-XX	6	5461-F08-00X-XX	9	5920-152-253-XX	3
5120-042-093-XX	3	5155-015-381-XX	7	5461-022-075-XX	2	5920-222-205-XX	6
5120-052-081-XX	3	5156-013-245-XX	2		2	5920-222-248-XX	11
5120-092-066-XX	3	5156-401-321-XX	9	5490-156-116-XX	1	5920-252-168-XX	2
5120-112-056-XX	3	5156-072-072-XX	3	5490-192-095-XX	10		3
5120-162-060-XX	3	5159-732-150-XX	8	5490-642-054-XX	9	5920-252-169-XX	2
5120-322-060-XX	3	5161-152-079-XX	4	5490-642-055-XX	9		3
5127-406-812-00	10	5161-262-107-XX	1	5490-692-229-XX	9	5920-252-170-XX	3
5130-B05-25X-XX	6	5161-682-084-XX	7	5490-783-067-XX	3		19
5130-G06-10X-XX	5	5161-711-053-XX	7	5490-802-159-XX	11	5920-252-171-XX	3
	2	5161-832-001-XX	8	5490-892-323-9H	3		2
	6	5161-842-002-XX	8	5490-892-353-9H	5	5920-252-172-XX	2
	7	5161-852-009-XX	8	5490-892-354-9H	5		2
	10	5161-862-007-XX	8	5490-892-355-9H	5	5920-252-173-XX	3
	11	5161-862-007-XX	8	5491-062-510-9X	9		21
	11	5161-862-007-XX	8	5491-102-069-XX	7	5920-252-174-XX	3
	17	5171-608-18X-XX	9	5491-132-121-XX	7		22
5130-G08-12X-XX	9	5172-506-77X-XX	8	5491-182-104-XX	3	5920-252-175-XX	3
5130-G08-16X-XX	3	5180-162-053-9H	5	5491-202-223-XX	1		23
5130-G08-40X-XX	1	5180-722-073-XX	9	5491-212-170-XX	6	5920-252-176-XX	2
5130-T08-45X-XX	1	5180-722-097-XX	9	5510-232-118-XX	10		24
5130-012-128-XX	2	5209-922-50X-XX	11	5510-362-066-XX	10	5920-262-052-XX	2
5130-022-077-XX	2	5211-182-078-XX	3	5511-A07-35X-XX	3	5920-331-099-XX	2
5130-082-055-XX	2	5211-192-139-XX	6	5554-A06-00X-XX	7	5920-372-171-XX	2
5130-252-097-XX	2	5211-212-067-XX	6	5560-312-223-XX	9	5920-382-094-XX	6
5130-292-117-XX	2	5211-602-053-XX	6	5560-312-458-XX	12	5920-382-098-XX	2
5130-312-054-XX	2	5211-672-061-XX	7	5560-312-459-XX	12	5920-431-037-XX	1
5130-426-012-XX	2	5211-842-229-XX	6	5590-412-067-XX	5	5920-431-263-XX	1
5130-702-086-XX	3	5213-505-22X-XX	7	5590-512-097-XX	2	5920-432-186-XX	3

PART CODE	REF. NO	PART CODE	REF. NO	PART CODE	REF. NO	PART CODE	REF. NO
5920-452-188-XX	1 15						
5920-492-097-XX	1 16						
5920-492-189-XX	1 17						
5920-492-207-XX	1 18						
5920-551-343-XX	1 19						
5920-552-067-XX	1 3						
5920-552-072-XX	2 27						
5920-632-209-XX	8 13						
5920-642-085-XX	8 14						
5920-662-203-XX	4 4						
5920-701-167-XX	6 14						
5920-712-112-XX	6 18						
5920-712-126-XX	7 14						
5920-712-138-XX	10 14						
5920-722-073-XX	9 6						
5921-102-098-XX	13 1						
5921-442-004-XX	7 9						
5921-442-055-XX	11 12						
5921-442-183-XX	11 13						
5921-442-199-XX	7 15						
5921-442-212-XX	11 14						
5921-442-262-XX	9 19						
5921-442-263-XX	7 10						
5921-442-279-XX	7 16						
5921-442-323-XX	3 14						
5921-502-145-XX	1 20						
5921-502-197-XX	5 12						
5921-502-198-XX	3 27						
5921-502-274-XX	8 15						
5921-702-017-XX	6 16						
5921-902-059-XX	6 17						
5921-902-096-XX	10 15						
5922-002-029-XX	7 17						
5922-002-036-XX	7 18						

www.emc-motoculture.com

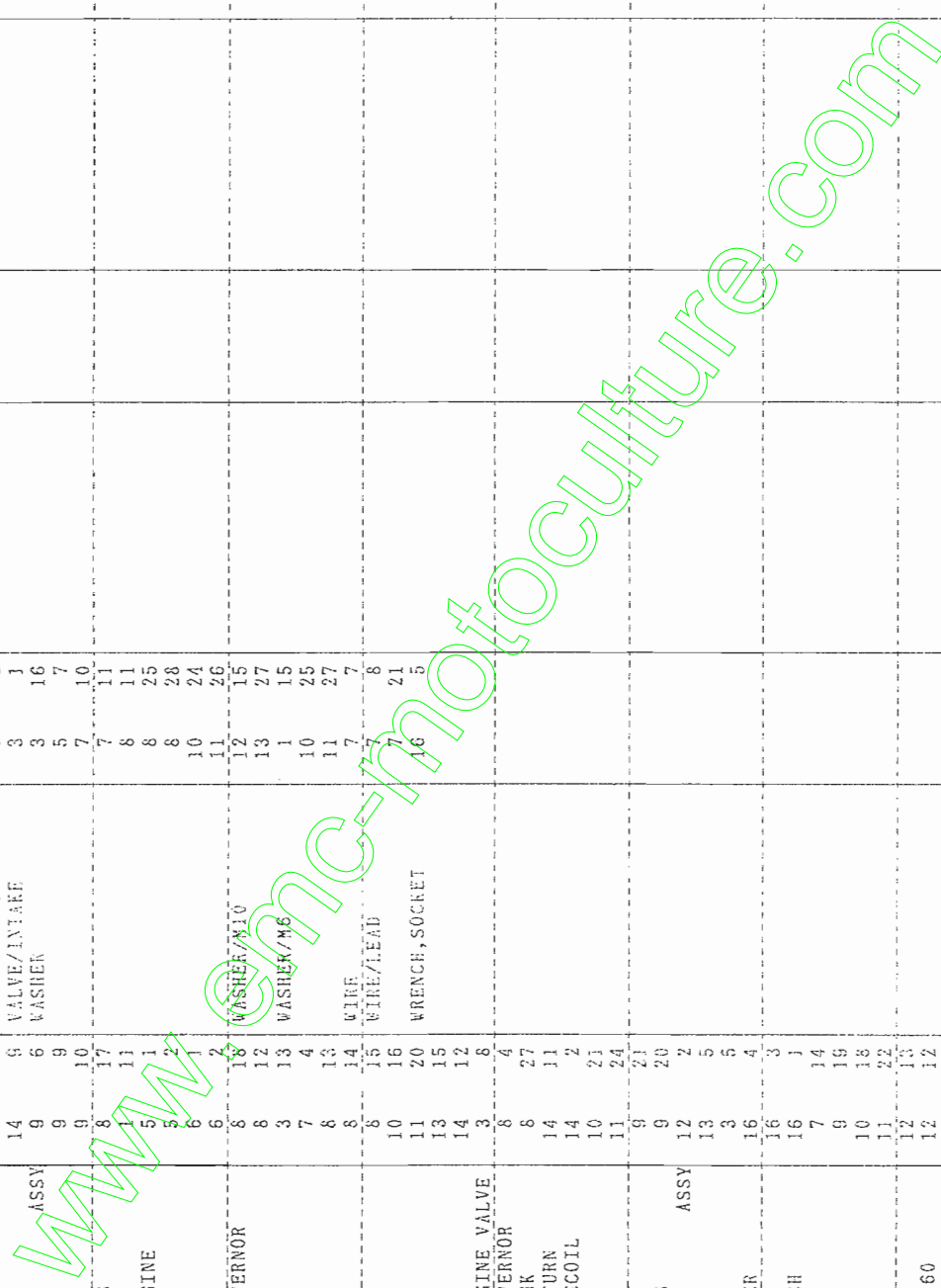
PART CODE	REF. NO	PART CODE	REF. NO	PART CODE	REF. NO	PART CODE	REF. NO
5590-662-607-XJ	6	5921-442-266-XX	8	5921-442-266-XX	14		
5590-662-614-XJ	5	5921-442-270-XX	8	5921-442-270-XX	15		
5591-012-086-XX	14	5921-442-272-XX	14	5921-442-272-XX	12		
5591-062-119-XX	14	5921-442-297-XX	11	5921-442-297-XX	20		
5591-562-089-XX	10	5921-502-122-XX	2	5921-502-122-XX	7		
5591-562-242-XX	16	5921-502-198-XX	3	5921-502-198-XX	17		
5592-262-276-XX	8	5921-502-226-XX	10	5921-502-226-XX	17		
5601-A62-05X-XX	17	5921-502-227-XX	11	5921-502-227-XX	21		
5601-A63-05X-XX	18	5921-502-233-XX	8	5921-502-233-XX	16		
5920-022-269-XX	8	5921-502-274-XX	1	5921-502-274-XX	13		
5920-092-166-XX	7	5921-502-274-XX	9	5921-502-274-XX	14		
5920-092-307-XX	11	5921-502-067-XX	13	5921-502-067-XX	22		
5920-092-308-XX	8	5921-502-070-XX	7	5921-502-070-XX	17		
5920-092-311-XX	14	5921-902-040-XX	12	5921-902-040-XX	11		
5920-092-322-XX	11	5921-902-043-XX	13	5921-902-043-XX	23		
5920-151-143-XX	5	5921-902-094-XX	10	5921-902-094-XX	18		
5920-151-193-XX	8	5921-902-094-XX	11	5921-902-094-XX	22		
	0	5922-002-029-XX	13	5922-002-029-XX	24		
	10		8		28		
	11						
	19						
5920-152-120-XX	8						
5920-152-240-XX	3						
5920-152-253-XX	3						
5920-222-001-XX	3						
5920-262-304-XX	6						
5920-332-160-XX	14						
5920-372-165-XX	7						
5920-372-171-XX	7						
5920-382-077-XX	2						
	10						
5920-431-037-XX	1						
5920-431-263-XX	1						
5920-432-122-XX	3						
5920-432-130-XX	3						
5920-492-198-XX	1						
5920-552-064-XX	4						
5920-592-156-XX	7						
5920-632-208-XX	9						
5920-642-082-XX	9						
5920-662-203-XX	4						
5920-701-167-XX	7						
5920-712-125-XX	7						
5920-712-126-XX	6						
5920-752-113-XX	13						
5921-072-057-XX	16						
5921-102-098-XX	16						
5921-442-049-XX	3						
5921-442-177-XX	14						



PART CODE	REF. NO	PART CODE	REF. NO	PART CODE	REF. NO	PART CODE	REF. NO	PART CODE	REF. NO
V704-140-012-00	7	1105-608-004-00	41	1108-902-014-00	47	1110-219-001-00	13		16
V704-140-014-00	8		42		47		21		5
V704-140-015-00	20		43		4	1110-219-002-00	4		9
	21	1105-608-250-00	41		6	1110-219-003-00	21		3
	7		42		41	1110-219-004-00	8		10
	3		43		1	1110-219-005-00	1		11
V704-140-020-00	8		43		2	1110-221-001-00	1		6
	12	1105-608-252-00	41		2	1110-221-001-00	2		16
	13		42		3	1110-221-200-00	3		13
V705-140-035-00	8		43		4	1110-224-002-00	14		3
V706-140-045-00	24	1105-608-253-00	41		4	1110-224-003-00	9		17
	25		42		6	1110-224-004-00	1		5
V707-140-055-00	17		43		6	1110-224-006-00	5		17
	17	1105-608-254-00	41		6	1110-224-210-00	10		1
V720-101-900-80	10		42		6	1110-229-200-00	20		10
	11		43		6	1110-229-210-00	6		1
V740-114-250-70	19	1105-906-003-00	48		6	1110-230-001-00	11		18
	20		48		6	1110-230-200-10	16		2
	21	1107-902-001-00	46		6	1110-230-210-00	2		19
V740-117-350-70	12		46		6	1110-235-001-00	22		3
	13		46		6	1110-235-002-00	7		1
	14		46		6	1110-235-003-00	12		5
V740-125-400-80	12		46		6	1110-241-250-00	22		22
	13	1107-902-002-10	46		3	1110-241-250-00	1		24
	14		46		6	1110-301-001-10	3		25
V760-150-000-00	24		46		6	1110-301-001-10	1		12
	25		46		9	1110-301-003-00	6		10
V920-551-001-20	48		46		12	1110-301-250-00	2		26
W201-260-803-00	1		46		18	1110-301-250-00	2		7
	2		46		21	1110-216-002-00	11		25
1102-611-006-00	40		46		21	1110-216-005-00	10		24
	44	1108-311-003-10	29		10	1110-216-006-00	3		24
1102-611-210-00	44		30		10	1110-217-001-00	12		1
	44		30		6	1110-217-001-00	14		1
1103-312-001-00	29	1108-311-004-10	29		6	1110-217-003-00	4		28
	44		30		3	1110-217-004-10	13		2
	44		30		3	1110-217-005-10	13		28
1103-405-200-00	30	1108-606-200-10	41		11	1110-217-006-20	13		6
1104-202-004-00	7		47		4	1110-217-007-00	14		29
	8	1108-902-011-00	47		11	1110-217-008-00	4		6
1104-606-230-10	42		47		19	1110-217-009-00	14		1
	43		47		5	1110-217-011-00	13		2
1105-216-005-00	10	1108-902-012-00	47		12	1110-218-001-10	15		30
	11		47		20	1110-218-002-10	15		5
1105-402-211-00	32		47		8	1110-218-200-00	15		30
1105-403-004-00	24	1108-902-013-00	47		15	1110-218-210-00	15		5
	25		47		23	1110-219-001-00	16		31
1105-422-210-00	32		47		6	1110-219-001-00	1		1
1105-422-212-00	32	1108-902-014-00	47		6	1110-219-001-00	1		1

DESCRIPTION	REF. NO	DESCRIPTION	REF. NO	DESCRIPTION	REF. NO	DESCRIPTION	REF. NO
ARM/GOVERNOR	8	CAP, SPEED, PIG	7	GASKET/MUFFLER	3	PANEL/CONTROL	7
ARM/PIVOT	8	CARBURETOR	9	GASKET,ROCKER CASE	2	PANEL/CONTROL ASSY	5
ARM/ROCKER	3	CASE/AIR FILTER	10	GAGE,FUEL	22		8
ARMESTER SPARK	10	CASE/ROCKER	11	GEAR/HELICAL	2	PAWL,RECOIL STARTER	14
ARRESTER/SPARK	11	CASE,RECOIL STARTER	1	GOVERNOR-ASSY	3	PIN	1
BAR	11	CHAMBER FLOAT	14	GROMMET	7		10
BEARING,RB/6204	11	CLAMP	9	GUIDE	3		11
BOLT	1	CLIP	7	HANDLE	14	PIN PISTON	12
	13		12	HEAD/CYLINDER	17	PIN,DOWEL	2
	14		7	HOUSING/FAN	22	PIPE	1
	3		7	IGNITER	9	PIPE	10
	5		9	IGNITION COIL	5	PIPE/EXHAUST	11
	6		12	INSULATOR	6	PIPE/INTAKE	10
	7		13	JET/MAIN	7	PIPE/TAIL	9
	19		12	JET/PILOT	9	PISTON	10
	16		21	KEY	2	PISTON L=0.5	1
	8		10	LABEL	3	PLATE	2
	22		15	LEVER	15		5
	9		10	LINK/CHOKER	8		2
	14		5	MUFFLER	3		4
	10		11	NOZZLE/MAIN	3		7
	17		10	NUT	3		15
	20		11	NUT/RING	12		2
	11		12	NUT/RING	13		4
	12		13	NUT/RING	14		7
	14		3	NUT/RING	11		8
	13		6	NUT/RING	6		14
	26		10	NUT/RING	1		1
BOLT M6X8	10	COVER,CRANKCASE	1	NOZZLE/MAIN	3		15
BOLT/M6X12	8	COVER,CRANKCASE	1	NUT	3		3
BOLT/M6X30	1	CRANKCASE	1	NUT	3		16
BOLT/M6X8	5	DECOMPRESSOR	3	NUT	3		20
	6	ELEMENT/AIR FILTER	10	NUT	3		13
	14	FAN	3	NUT	3		15
	5	FILTER ASSY AIR	10	NUT	3		11
	11	FILTER/FUEL	12	NUT	3		11
	23	FILTER/FUEL	13	NUT	3		11
	3	FILTER,FUEL	13	NUT	3		11
BOLT/M6X25	3	FLOAT	9	NUT	3		11
BOLT,CONNECTING ROD	2	FLOAT	9	NUT	3		11
BRACKET	7	FLYWHEEL	7	NUT	3		11
	8	FUEL TANK	13	NUT	3		11
	12	GASRET	4	NUT	3		11
	13	GASRET	4	NUT	3		11
	13	GASRET	4	NUT	3		11
	13	GASRET	4	NUT	3		11
	1	GASRET	4	NUT	3		11
	6	GASRET	4	NUT	3		11
BRACKET/TANK	2	GASRET	4	NUT	3		11
BREATHER	1	GASRET	4	NUT	3		11
CANSHAFT	2	GASRET	4	NUT	3		11
CANSHAFT	3	GASRET	4	NUT	3		11
CAP TANK	11	GASRET/AIR FILTER	10	NUT,6MM	13		13
CAP/OIL FILLER	4	GASRET/GARMENTATOR	9	O-RING	1		11
CAP,AIR FILTER	10	GASRET/HEAD	1	O-RING	1		11
	11	GASRET/MUFFLER	10	O-RING	1		11
	3		10	O-RING	1		11
	6		10	O-RING	1		11
	11		10	O-RING	1		11
	13		10	O-RING	1		11
	12		10	O-RING	1		11
	3		10	O-RING	1		11
	4		10	O-RING	1		11
	10		10	O-RING	1		11
	11		10	O-RING	1		11
	3		10	O-RING	1		11
	6		10	O-RING	1		11
	11		10	O-RING	1		11
	13		10	O-RING	1		11
	12		10	O-RING	1		11
	3		10	O-RING	1		11
	4		10	O-RING	1		11
	10		10	O-RING	1		11
	11		10	O-RING	1		11
	3		10	O-RING	1		11
	6		10	O-RING	1		11
	11		10	O-RING	1		11
	13		10	O-RING	1		11
	12		10	O-RING	1		11
	3		10	O-RING	1		11
	4		10	O-RING	1		11
	10		10	O-RING	1		11
	11		10	O-RING	1		11
	3		10	O-RING	1		11
	6		10	O-RING	1		11
	11		10	O-RING	1		11
	13		10	O-RING	1		11
	12		10	O-RING	1		11
	3		10	O-RING	1		11
	4		10	O-RING	1		11
	10		10	O-RING	1		11
	11		10	O-RING	1		11
	3		10	O-RING	1		11
	6		10	O-RING	1		11
	11		10	O-RING	1		11
	13		10	O-RING	1		11
	12		10	O-RING	1		11
	3		10	O-RING	1		11
	4		10	O-RING	1		11
	10		10	O-RING	1		11
	11		10	O-RING	1		11
	3		10	O-RING	1		11
	6		10	O-RING	1		11
	11		10	O-RING	1		11
	13		10	O-RING	1		11
	12		10	O-RING	1		11
	3		10	O-RING	1		11
	4		10	O-RING	1		11
	10		10	O-RING	1		11
	11		10	O-RING	1		11
	3		10	O-RING	1		11
	6		10	O-RING	1		11
	11		10	O-RING	1		11
	13		10	O-RING	1		11
	12		10	O-RING	1		11
	3		10	O-RING	1		11
	4		10	O-RING	1		11
	10		10	O-RING	1		11
	11		10	O-RING	1		11
	3		10	O-RING	1		11
	6		10	O-RING	1		11
	11		10	O-RING	1		11
	13		10	O-RING	1		11
	12		10	O-RING	1		11
	3		10	O-RING	1		11
	4		10	O-RING	1		11
	10		10	O-RING	1		11
	11		10	O-RING	1		11
	3		10	O-RING	1		11
	6		10	O-RING	1		11
	11		10	O-RING	1		11
	13		10	O-RING	1		11
	12		10	O-RING	1		11
	3		10	O-RING	1		11
	4		10	O-RING	1		11
	10		10	O-RING	1		11
	11		10	O-RING	1		11
	3		10	O-RING	1		11
	6		10	O-RING	1		11
	11		10	O-RING	1		11
	13		10	O-RING	1		11
	12		10	O-RING	1		11
	3		10	O-RING	1		11
	4		10	O-RING	1		11
	10		10	O-RING	1		11
	11		10	O-RING	1		11
	3		10	O-RING	1		11
	6		10	O-RING	1		11
	11		10	O-RING	1		11
	13		10	O-RING	1		11
	12		10	O-RING	1		11
	3		10	O-RING	1		11
	4		10	O-RING	1		11
	10		10	O-RING	1		11
	11		10	O-RING	1		11
	3		10	O-RING	1		11
	6		10	O-RING	1		11
	11		10	O-RING	1		11
	13		10	O-RING	1		11
	12		10	O-RING	1		11
	3		10	O-RING	1		11
	4		10	O-RING	1		11
	10		10	O-RING	1		11
	11		10	O-RING	1		11
	3		10	O-RING	1		11
	6		10	O-RING	1		11
	11		10	O-RING	1		11
	13		10	O-RING	1		11
	12		10	O-RING	1		11
	3		10	O-RING	1		11
	4		10	O-RING	1		11
	10		10	O-RING	1		11
	11		10	O-RING	1		11
	3		10	O-RING	1		11
	6		10	O-RING	1		11
	11		10	O-RING	1		11
	13		10	O-RING	1		11
	12		10	O-RING	1		11
	3		10	O-RING	1		11
	4		10	O-RING	1		11
	10		10	O-RING	1		11
	11		10	O-RING	1		11
	3		10	O-RING	1		11
	6		10	O-RING	1		11
	11		10	O-RING	1		11
	13		10	O-RING	1		11
	12		10	O-RING	1		11
	3		10	O-RING	1		11
	4		10	O-RING	1		11
	10		10	O-RING	1		11
	11		10	O-RING	1		11
	3		10	O-RING	1		11
	6		10	O-RING	1		11
	11		10	O-RING	1		11
	13		10	O-RING	1		

DESCRIPTION	REF . NO	DESCRIPTION	REF . NO	DESCRIPTION	REF . NO	DESCRIPTION	REF . NO
SCREW	13	VALVE/CHOKE	9	23			
	13	VALVE/EXHAUST	3	2			
SCREW	14	VALVE/INTAKE	3	1			
ASSY	9	WASHER	3	16			
	9		5	7			
SCREW M4X8	9		7	10			
SEAL,OIL	8		7	11			
SHROUD/ENGINE	11		8	11			
	5		8	25			
	5		8	28			
	6		10	24			
	6		11	26			
SLEEVE,GOVERNOR	8	WASHER/10	12	15			
SPACER	8		13	27			
SPRING	3	WASHER/M6	1	15			
	7		10	25			
	8		11	27			
	8	WIRE	7	7			
	8	WIRE/HEAD	7	8			
	10		7	21			
	11	WRENCH,SOCKET	16	5			
	13						
	14						
SPRING-ENGINE VALVE	3						
SPRING/GOVERNOR	8						
SPRING,LINK	8						
SPRING,RETURN	14						
STARTER RECOIL	14						
STUD	10						
	11						
STUD BOLT	9						
STUD M6X18	9						
TAP	12						
ASSY	13						
TAPPET	3						
TOOL DRIVER	16						
TOOL KIT	16						
TOOL,WRENCH	16						
TUBE	7						
	10						
	11						
	12						
TUBE 4X8X160	12						
TUBE/6X10X200	13						
VALVE ASSY THROTTLE	9						
VALVE/CHOKE	9						
ASSY	9						



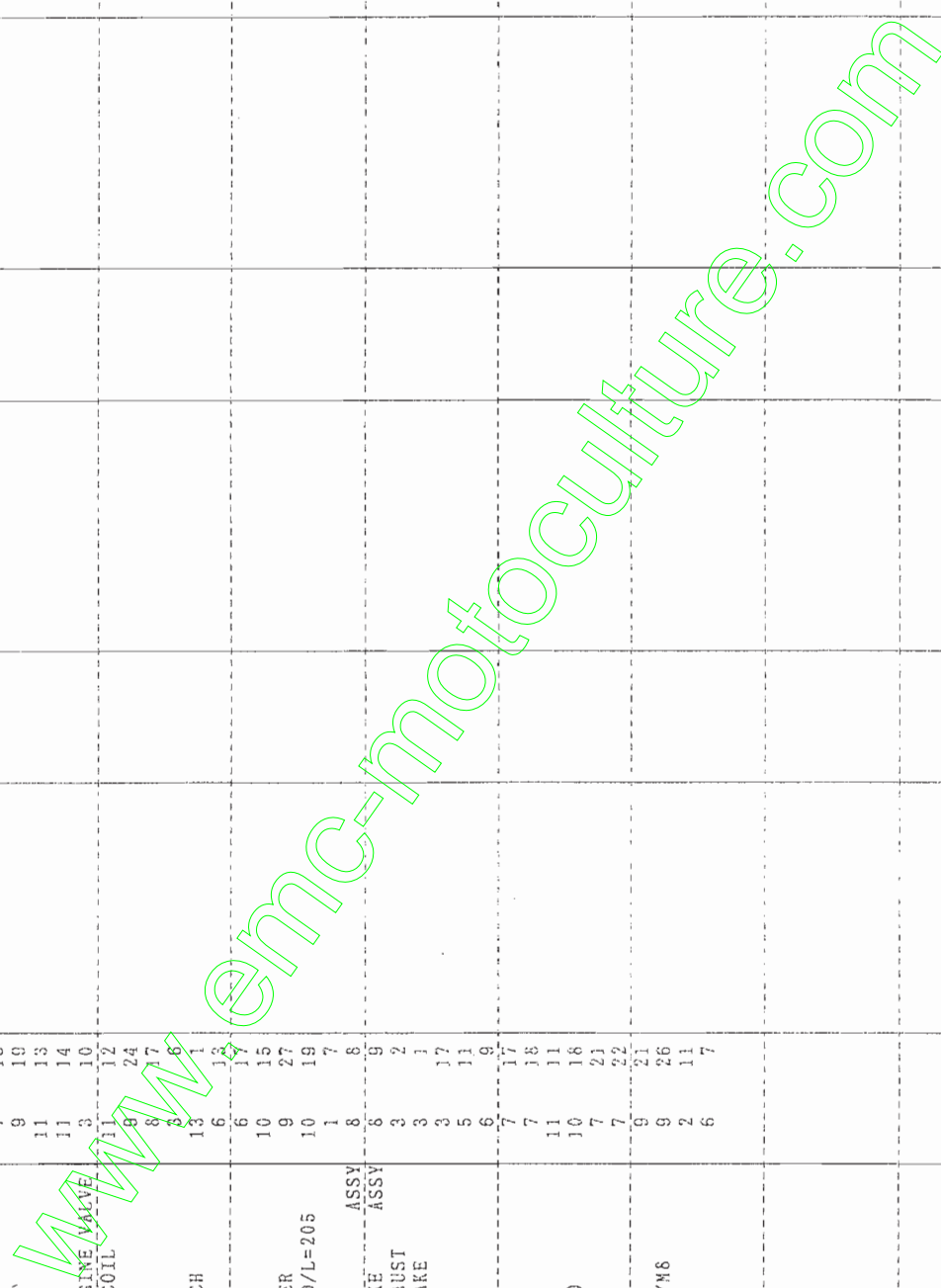
BP049 5210-097-100-00

*** ALPHABETICAL INDEX ***

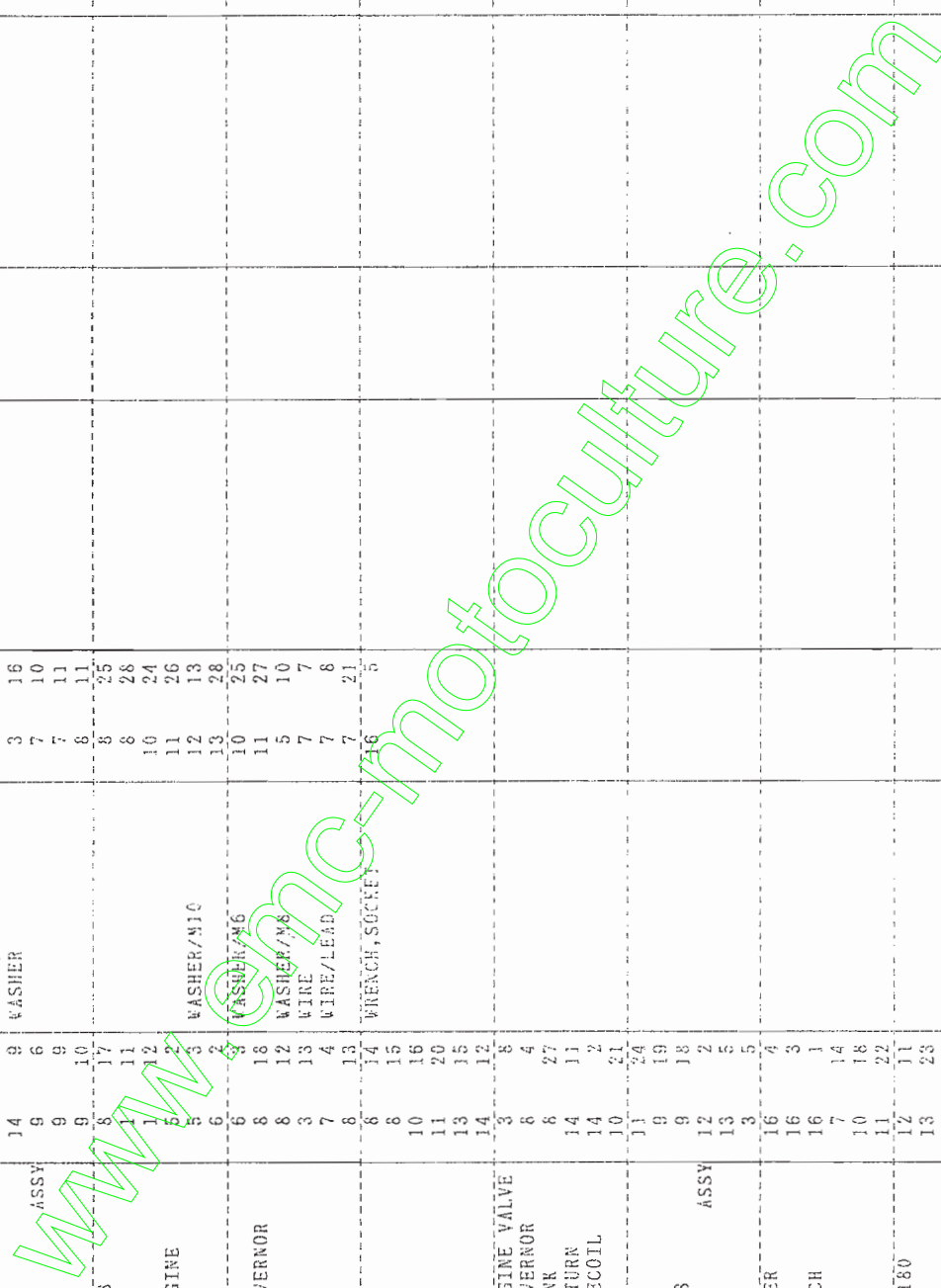
93.07.14 P. 1

DESCRIPTION	REF. NO	DESCRIPTION	REF. NO	DESCRIPTION	REF. NO	DESCRIPTION	REF. NO	DESCRIPTION	REF. NO
AIR FILTER ASSY	9	CLAMP	6	KEY	11	RING/PISTON L=0.5	10		5
ARM LOCKER ASSY	7	CLIP	6		16	RING,SNAP	29		26
ARM,PIVOT	3		10	LABEL/MANUAL	12	ROD	12		7
ARM,PIVOT	7		10		13		11		28
ARRESTER/SPARK	9	COIL,IGNITION	6		2	ROD,PUSH	2		3
BAFFLE	9	COLLET	3		4	ROPE	2		8
BAND	9	CONNECTING ROD ASSY	2	LINK	13	SCREW	7		11
BAR	13	COVER	6	LINK,CHISE	4		1		12
BEARING,BALL	1	COVER/MUFFLER	11	MUFFLER ASSY	1		9		5
BOLT	1	CONCH. CRANK CASE	9		16		13		8
	1	CRANK CASE COMP	1	NUT	9		12		9
	1	CRANK SHAFT COMP	1	NUT	16		15		18
	1	DECOMPRESSION	2	NUT	10		16		10
	3	FAN	3	NUT/M6	6	SCREW	10		17
	3	FAN	5	NUT/M8	12	ASSY	8		7
	5	FILTER/FUEL	10		7		6		10
	5	FILTER,AIR	9		9		21		8
	5	FILTER,FUEL	9	NUT,RING	10		22		10
	6	FLOAT	4	NUT,6MM	4		10		17
	6	FLOAT	4	O-RING	4		10		17
	6	FLYWHEEL	8		4	SEAT,SPRING	15		9
	7	GASKET	8		4	SHAFT	3		3
	7		8		4	SHIM T=1.13	27		2
	7		9		4	SHIM T=1.18	27		16
	7		9		4	SHIM T=1.18	4		3
	7		9		4	SHIM T=1.18	10		2
	7		9		4	SHIM T=1.18	10		17
	8		10		5	SHIM T=1.23	8		3
	9	GASKET AIR FILTER	9	PANEL/CONTROL	2		7		2
	10	GASKET,CARBURETOR	8	PIN	2		13		18
	11	GASKET,GEAR CASE	1		4		1		3
	11	GASKET,HEAD	1		1		14		2
	11	GASKET,INSULATOR	8		1		13		19
	11	GASKET,LOCKER CASE	1		1		13		3
BOLT M6X8	9	GASKET,MUFFLER	1	PIN,PISTON	3	SHIM T=1.33	7		23
	9	GEAR,HELICAL	2	PIPE	1		2		3
	9	GEAR,HELICAL	2	PIPE/TAIL	9	SHIM T=1.38	10		3
BOLT,CONN.	2	GEAR,SHUT	2	PISTON L=0.5	9		3		2
BOLT,FLANGED	7	GOVERNOR ASSY	7	PISTON,ENGINE	2	SHIM T=1.43	2		21
BRACKET	10	GRATE	9	PLATE	6		2		22
BRACKET	3	GRIP	11		7	SHIM T=1.48	1		3
CAMSHAFT	4	GROMMET	6	PLUG	15		5		25
CAP	9	GROMMET,FLIG CAP	7	POLE,RECOIL STARTER	4		2		24
	10	GUIDE	10	POLE,STARTING	14		4		24
CAP/AIR FILTER	6	HEAD,CYLINDER	3	RECOIL STARTER ASSY	11		5		3
CAP/FUEL TAP	9	HOUSING/FAN	5	REEL	6		4		3
CARBURETOR ASSY	10	IGNITER	6	RETAINER	11		4		6
CASE/RECOIL STARTER	8	INSULATOR	8	RETAINER,VALVESPRING	11		11		3
CASE,LOCKER	1	JET/MAIN	8	RING SET,PISTON	8		13		5
CASE,SPRING	11	JET,PILOT	8		14		14		4
CHAMBER FLOAT	8		8		14		14		7
CLAMP	6		8		14		14		7

DESCRIPTION	REF . NO	DESCRIPTION	REF . NO	DESCRIPTION	REF . NO	DESCRIPTION	REF . NO
SPRING	7 15						
	7 16						
	9 19						
	11 13						
	11 14						
SPRING,ENGINE VALVE	3 10						
SPRING,RECOIL	11 12						
STUD	8 24						
STUD BOLT	8 17						
TAPPET	3 16						
TOOL,WRENCH	13 1						
TUBE	6 13						
	6 17						
TUBE/RUBBER	10 15						
TUBE,BRAID/L=205	9 27						
VALVE	10 19						
VALVE	1 7						
VALVE/CHOKE	8 8						
ASSY	8 9						
ASSY	3 2						
VALVE,EXHAUST	3 1						
VALVE,INTAKE	3 17						
WASHER	5 11						
	6 9						
	7 17						
	7 18						
WASHER/M10	11 11						
WASHER/M6	10 18						
	7 21						
	7 22						
WASHER,SP/M6	9 21						
WEIGHT	9 26						
WIRE,LEAD	2 11						
	6 7						



DESCRIPTION	REF . NO	DESCRIPTION	REF . NO	DESCRIPTION	REF . NO	DESCRIPTION	REF . NO
SCREW	13	VALVE/EXHAUST	2				
	14	VALVE/INTAKE	3				
SCREW	13	WASHER	3				
ASSY	14		3				
	9		7				
	6		10				
	9		7				
	10		11				
SCREW M4X8	8		6				
SEAL,OIL	17		8				
	11		8				
	12		10				
SHROUD/ENGINE	5		11				
	5	WASHER/M10	12				
	3		13				
	3		28				
	6	WASHER/M6	10				
	6		25				
SLEEVE,GOVERNOR	8	WASHER/M6	11				
SPACER	12	WIRE	5				
SPRING	3	WIRE/LEAD	7				
	7		7				
	4		8				
	8	WRENCH, SOCKET	7				
	13		21				
	8		5				
	14						
	8						
	15						
	16						
	11						
	20						
	13						
	15						
	14						
	12						
SPRING-ENGINE VALVE	3						
SPRING/GOVERNOR	8						
SPRING, LINK	8						
SPRING, RETURN	27						
STARTER RECOIL	14						
STUD	14						
	10						
	11						
	24						
STUD BOLT	9						
STUD M6X18	9						
TAP	12						
ASSY	18						
	2						
	2						
	3						
	5						
TAPPET	3						
TOOL DRIVER	16						
TOOL KIT	16						
TOOL, WRENCH	16						
TUBE	7						
	14						
	18						
	10						
	11						
	22						
TUBE/4X8X180	12						
	11						
TUBE/6X10X215	13						
VALVE ASSY CHORE	13						
	24						
	9						
	6						
	9						
	21						
VALVE ASSY THROTTLE	9						



DESCRIPTION	REF. NO	DESCRIPTION	REF. NO	DESCRIPTION	REF. NO	DESCRIPTION	REF. NO	DESCRIPTION	REF. NO
ARM/SIDECLUTCH	37	BOLT	26	BOLT/M6X23	32	CAP/TANK	43	CASE/TRANSMISSION/LH	10
ARM/SIDECLUTCH COMP	38	BOLT	33	BOLT/SP	42	CAP,OIL/30	10	CASE/TRANSMISSION/RH	11
ARM/SUBSHIFT COMP	19	BOLT M10X155	34		42		11		3
ARM/SUBSHIFT COMP	20	BOLT	27		43	CAP,SEAL/25X7	10		2
ARM/TENSION COMP	21	BOLT(SP) M8X20	28	BOLT,SEMS (SP)	9	CAP,SHAFT/24X50	10		1
	8		5		37		11		4
BALL,STEEL/5/16	17		27		38		10		2
	16		28		43		11		1
	3		29		44		10		3
	20		29		9		11		2
BAND/ACCELERATOR	21		30		9	CHAIN/ROLLER/25SHCP2	16		16
BAND,WIRE/140	32		30		9	CLIP,HOSE/D=11	41		7
BEARING	31	BOLT(SP) M6X16	35		41		42		25
	12		41		42		43		26
	13		44		42	CLIP,M TYPE	32		5
	14		44		43	CLUMPER,LEAD	38		11
BEARING,NR/KT202617	13	BOLT/LOCK COMP	29		44	COVER/BELT/A/55	44		1
BEARING,RB 6006	17		30		44	COVER/BELT/A/77	44		6
	17		19		44		44		13
BEARING,RB/6202	15	BOLT/M 6X10	10	BOLT,SEMS (S)	45	COVER/BELT/B/55 COMP	44		3
	15	BOLT/M 8X100	11		6		44		15
	15		12		6	COVER/BELT/B/77 COMP	44		8
BEARING,RB/6202SS	8	BOLT/M 8X140	11		6	COVER/HANDLE	29		10
BEARING,RB/6203	16	BOLT/M 8X30	10		6		30		10
	16		11		6	COVER/MUFFLER/4 COMP	4		4
	16	BOLT/M 8X40	4		39	COVER/MUFFLER/5 COMP	4		9
	16		4		39	COVER/MUFFLER/77	10		4
BEARING,RB/6204	12		4		10	COVER,CASE	10		4
	12		4		11		11		3
	13		4		11		11		3
	14		4		22	FENDER/LH COMP	45		1
BEARING,RB/6302	16		10	BOSS/FREE WHEEL/3P	22	FENDER/RH COMP	45		2
BEARING,RB/6303	12		11	BOSS,CHANGE	18	FILTER	41		6
	13	BOLT/M 8X45	10	BRACKET/HANDLE COMP	24		42		7
	14		11		25		43		7
BELT/VB038	6	BOLT/M 8X55	1	BREATHER/TANK CAP	26	FRAME/FRONT COMP	1		1
	6		2		41		2		1
	6	BOLT/M10X100	1		42	FRAME/HANDLE COMP	24		7
	6		2		43		25		7
BOLT	6	BOLT/M10X105	45	BUSH,SEAL	12		26		6
	1	BOLT/M10X26	18		13	GASKET/TANK CAP	41		3
	2	BOLT/M10X45	10		14		42		3
	5		11	CABLE/CLUTCH/E	31		43		3
	10	BOLT/M10X55	1	CABLE/HANDLESHIFT	35	GAUGE/FUEL	41		11
	11		2	CABLE/SIDECLUTCH	37		42		6
	24	BOLT/M10X70	29		38		43		6
	24		30	CABLE/THROTTLR ASSY	32	GEAR/SPUR 32	16		7
	25	BOLT/M12X120	5	CAP/TANK ASSY	41	GEAR/SPUR/IDLE	12		4
	25	BOLT/M12X50	23		42	GEAR/SPUR/13-18	16		3

DESCRIPTION	REF. NO	DESCRIPTION	REF. NO	DESCRIPTION	REF. NO	DESCRIPTION	REF. NO
PLATE	4	SCREWDRIVER ASSY	48	STAY/SUBSHIFT	21	WASHER/M10	33
PLATE/CABLE	37	SEAL	17	STAY,COVER(A),COMP	44		34
PLATE/I/42X32	38	SEAL OIL/SC14257	19		44		34
PLATE/IR/20X58	35		20	STOPPER/BELT/LOWER	9	WASHER/NYLON	45
PLATE/IR/20X58	42		21	STOPPER/BELT/UPPER	9		5
PLATE/KENSEI	43	SEAL,OIL	18		9		42
PLATE/LINK	39	SEAL,OIL/SC17357	12	SUPPORT	9		22
PLATE/LOCK	42		13		42		12
PLATE/LOCK	43		14		43		23
PLATE/LOCK	29	SEAL,OIL/SC25408	14	SUPPORT/FRONT/55	43	WASHER/11X22X3	28
PLATE/LOCK	30		12	SUPPORT/FRONT/77	42	WASHER/11X22X3	22
PLATE/LOCK	44		13	SUPPORT/REAR/55 COMP	43		3
PLATE/LOCK	44		14	SUPPORT/REAR/77 COMP	42	WASHER/20X28X01	22
PLATE/SPACER	40	SHAFT/COUNTER COMP	15	SUPPORT/TANK/44	41	WASHER/21X42X6	13
PLATE/SUBSHIFT	41	SHAFT/COUNTER COMP	15	SWITCH,STOP A	45	WASHER/22X62X02	26
PLATE/TANK CAP	42	SHAFT/MAIN	12	TANK/FUEL/A COMP	42	WASHER/9X22X2	26
PULLEY/VB073	43	SHAFT/REDUCTION COMP	13	TANK/FUEL/B COMP	43		10
PULLEY/VB073	6	SHAFT/SHIFT	16	TANK/FUEL/30 COMP	41	WASHER,FOLLOWER	11
PULLEY/VB073	6		17	TOOL,TOOL BAG	48		15
PULLEY/VB073	6	SHAFT/WHEEL	17	TUBE	29		6
PULLEY/VB073	6	SHAFT/WHEEL/E	17	TUBE,CONNECTING	20	WASHER,PL/M 8	18
PULLEY/VB073	6	SHIFTER/SUB	20		30		23
PULLEY/VB073	7	SPANNER	48		14		6
PULLEY/VB073	17	SPANNER/10X12	48		14		4
PULLEY/VB073	17	SPRING/GUIDE	43		20		4
PULLEY/VB073	24	SPRING/HCO34	17	WASHER / M6	35		21
PULLEY/VB073	25	SPRING/HCO54	35		4		6
PULLEY/VB073	8	SPRING/HCO57	36		4		6
PULLEY/VB073	7	SPRING/HT024	8		10		5
PULLEY/VB073	8	SPRING/BRAKE	7		15		4
PULLEY/VB073	21	SPRING,CLUTCH	31		31		4
PULLEY/VB073	7	SPRING,PRESSURE 32	33	WASHER /M12	42		3
PULLEY/VB073	8		34		43		5
PULLEY/VB073	12	SPRING,SHIFTER	18	WASHER /M12	7	WIRE	23
PULLEY/VB073	13		20		4	YORK/SHIFT	18
PULLEY/VB073	17		20	WASHER/M10	8		10
PULLEY/VB073	42		21		36		33
PULLEY/VB073	43		21		3		34
PULLEY/VB073	17	SPROCKET/19	17		18		2
PULLEY/VB073	24	STAND/E	3		24		2
PULLEY/VB073	13	COMP	3		25		2
PULLEY/VB073	25	COMP	18		26		2
PULLEY/VB073	11	STAY/SHIFTER/H COMP	18		27		2
PULLEY/VB073	30	STAY/SHIFTER/L COMP	18		27		2
PULLEY/VB073	11	STAY/SUBSHIFT	20		33		2
PULLEY/VB073	36		20		33		2



**Yvan Béal - 21, av. de l'Agriculture - B.P. 16
Z.I. du Brézet - 63014 Clermont-Ferrand Cedex 2
Tél : 04 73 91 93 51 - Télécopie : 04 73 90 23 11
www.yvanbeal.fr - E-mail : info@yvanbeal.fr
R.C.S. Clermont-Fd B 304 973 886 - S.A.S. au capital de 612 000 €**