



# PIÈCES DÉTACHÉES

**Plateaux de coupe**

**SXG122**  
SCMA48-SXG22E4B

**SXG137**  
SCMA54-SXG22E4B

Pour **SXG19**  
**SXG22**  
(Version 2007)



Yvan Béal - 21, av. de l'Agriculture - B.P. 16  
Z.I. du Brézet - 63014 Clermont-Ferrand Cedex 2  
Tél : 04 73 91 93 51 - Télécopie : 04 73 90 23 11  
www.yvanbeal.fr - E-mail : info@yvanbeal.fr  
R.C.S. Clermont-Fd B 304 973 886 S.A.S. au capital de 612 000 €

**03-000818-070619**



## Directions for use of Parts Catalogue

### 1. Applicable model of machines

All component and option parts used for SCMA48, SCMA54 Mower and SBC550X Collector are listed in this parts catalogue.

NOTES: SCMA48-SXG22E4B... FOR SXG19, 22  
 SCMA54-SXG22E4B... FOR SXG22

### 2. Explanation for head paragraph

KEY	PART CODE	DESCRIPTION	S P C	TYPE OF MODEL						I T C	C O L	G R P	REMARKS
				SSM48M	SSM48F	SSM48G	SRM48M	SRM48F	SRM48G				
1	8595-211-001-20	CASE/UPPER	*	1									
1A	8657-201-081-00	CASE/UPPER	*	1									
2	8595-211-002-10	CASE/LOWER	*	1									
3	V523-100-801-80	PIN	*	2									
4	V211-260-803-00	BOLT, SEMS	*	6									

- ① KEY shows the location of parts diagramed in the illustration.
- ② Parts numbers begin with `V` and `W` are standard parts of the market.
- ③ `LH` and `RH` on the parts name are described against the moving direction of the machine or are described on the condition how to install parts on the machines.
- ④ SPC : The following symbol classifies parts to be used for machines.
  - `\*` means standard parts.
  - `T` shows that the parts can be installed as optional parts.
  - `R` shows that the parts can be used as applicable parts to replace originally equipped parts.

- ⑤ Upper column : QTY shows the number of parts to be used for one unit of machine.

`M` is indicated for parts supplied by a meter long.

`l` is indicated for parts supplied by liter.

`AR` is indicated for parts need to be adjusted or regulated.

Lower column : serial number

-229 means serial number up to 229.

230- means serial number 230 and after.

- ⑥ ITC : Interchangeability

`1`...OLD ← NEW

New parts can be used in place of the old parts.

`2`...OLD → NEW

Old parts can be used in place of the new parts.

`3`...OLD →← NEW

Old parts and new parts can not be replaced each other.

- ⑦ COL : Color code

Color is signified with color code number for colored parts.

Please see the color list shown in the next page.

- ⑧ GRP : Parts shown in this column can be replaced by SET parts.

Example : Parts marked ① can be replaced by parts marked ②, and ④ for ③, so the rest follow in the same alphabetical order.

- ⑨ Remarks

\* Other maker's part code number is shown in this column.

\* When Fig. No. is shown in the Remark column of SET parts or ASSY parts, each of their component parts are listed in said Fig. No.

### 3. Color

The following colors are used color parts.

COLOR CODE	COLOR	SPRAY TYPE CODE NUMBER	PAINTS 4K DRUM	PAINTS 16K DRUM
7 F	MIRROR BLACK	1300-954-001-10	1300-954-003-00	1300-954-004-00

NOTE : Color code is signified only for the parts assigned by the maker as color parts.

#### 4. Serial Numbers :

For chassies serial number is shown on the LABEL.

Please see



#### 5. Parts Order

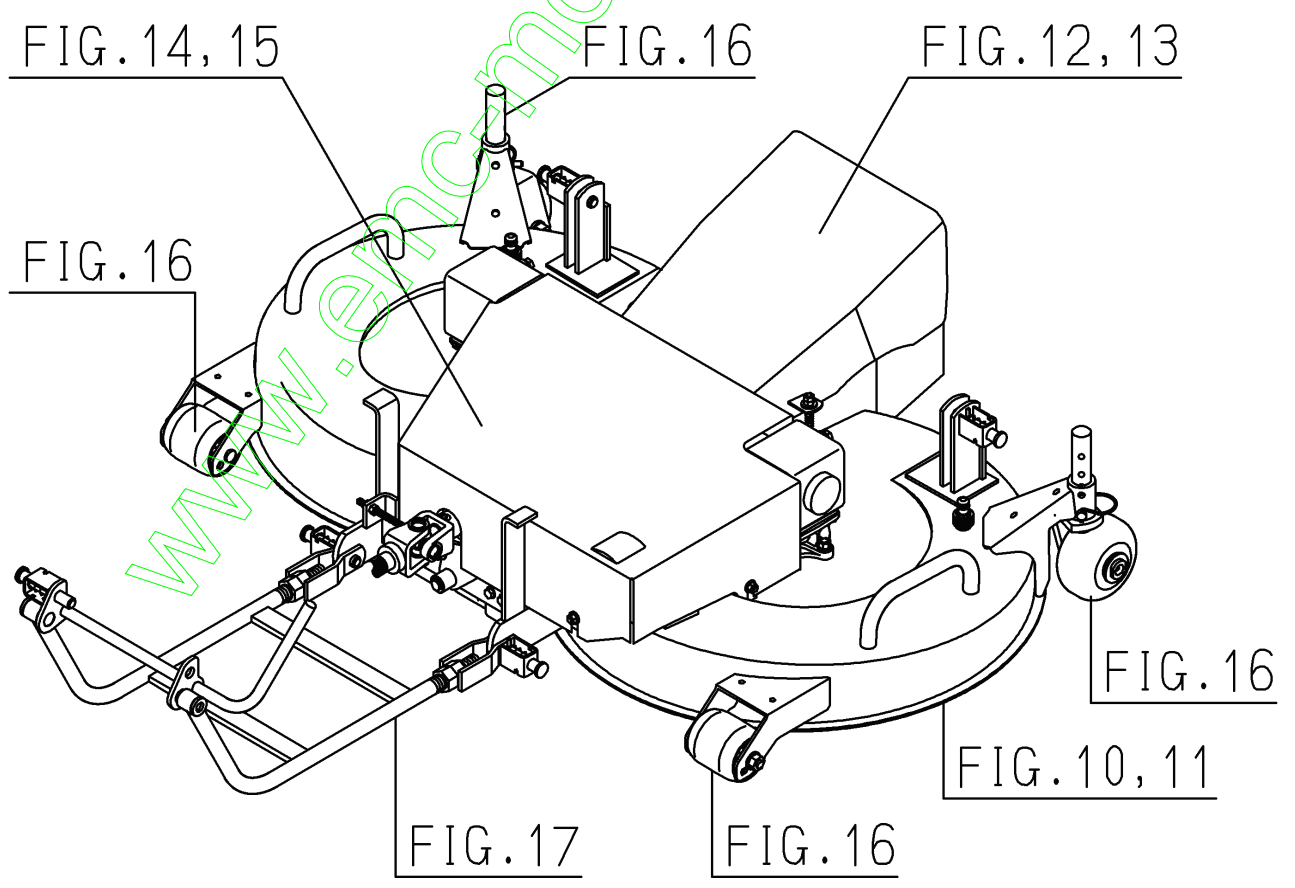
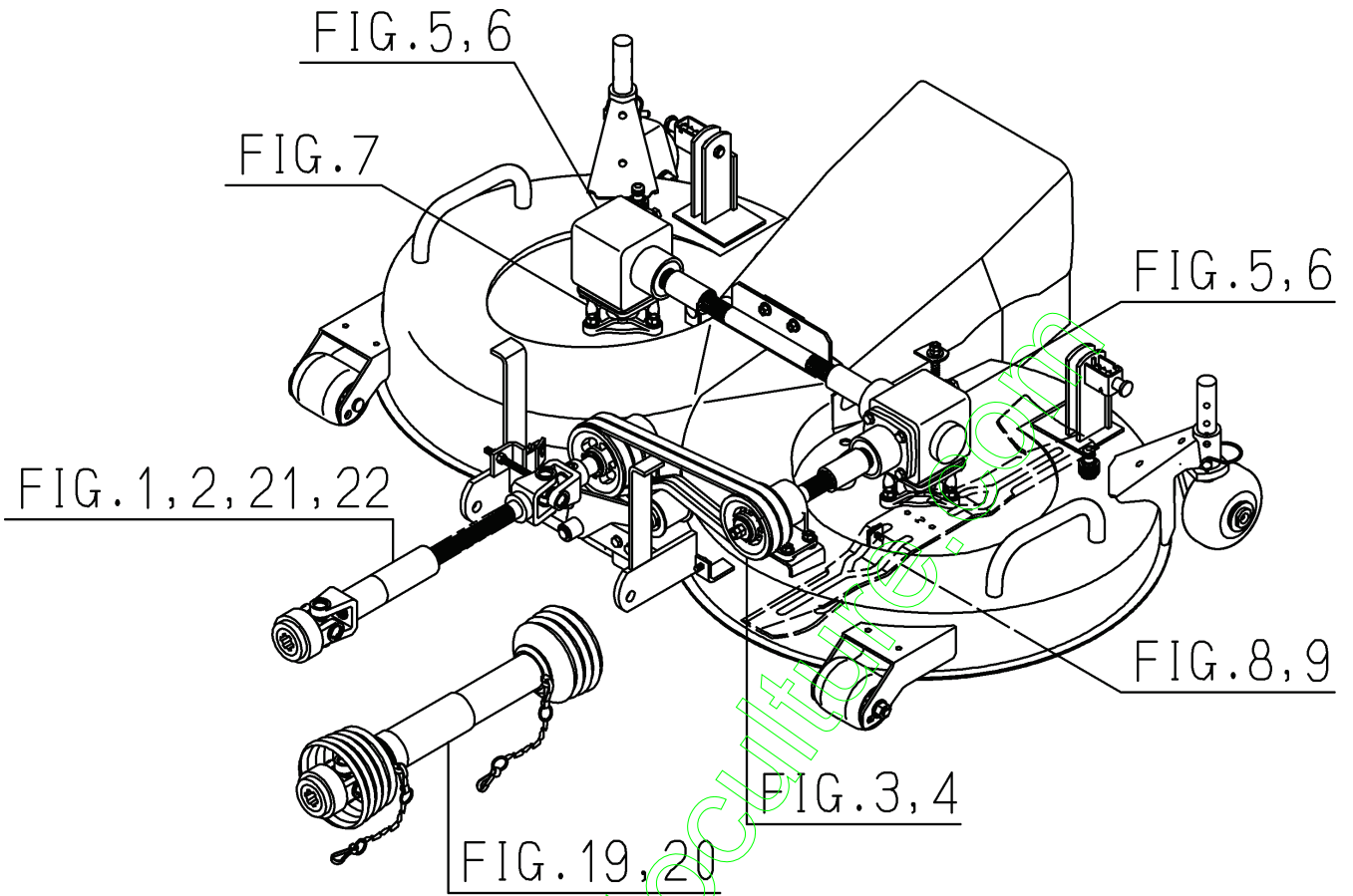
- 1) Parts numbers listed in the parts catalogue are all registered in “ISEKI on-line computer” .
- 2) When you order parts, please make sure of correct numbers.
- 3) When substitute parts is available, the part number ordered will be automatically turned to a new part number.
- 4) Please be sure to use “ISEKI GENUINE PARTS” .

Any other similar parts other than ISEKI parts when used may cause a trouble that makes us unable to repair or guarantee the warrant.

**\*\*\* Structure Table of Model \*\*\***

	S S C C M S M S A X A X O 4 G 5 G D 8 2 4 2 B 2 B 2 E E 4 4 L B B																				
FIG.																					
1		*																			
2		*																			
3		*																			
4			*																		
5		*																			
6			*																		
7		*	*																		
8		*																			
9			*																		
10		*																			
11			*																		
12		*																			
13			*																		
14		*																			
15			*																		
16		*	*																		
17		*	*																		
18		*	*																		
19		T																			
20				T																	
21			*																		
22		*																			

www.emc-motoculture.com



## Contents

### SCMA48B,54B

UNIVERSAL JOINT SYSTEM (SCMA54).....	Fig. 1
UNIVERSAL JOINT SYSTEM (SCMA48).....	Fig. 2
PULLEY SYSTEM (SCMA48).....	Fig. 3
PULLEY SYSTEM (SCMA54).....	Fig. 4
BEVEL CASE SYSTEM (SCMA48).....	Fig. 5
BEVEL CASE SYSTEM (SCMA54).....	Fig. 6
METAL SYSTEM.....	Fig. 7
BLADE SYSTEM (SCMA48).....	Fig. 8
BLADE SYSTEM (SCMA54).....	Fig. 9
MOWER DECK SYSTEM (SCMA48).....	Fig. 10
MOWER DECK SYSTEM (SCMA54).....	Fig. 11
DISCHARGE COVER SYSTEM (SCMA48).....	Fig. 12
DISCHARGE COVER SYSTEM (SCMA54).....	Fig. 13
BELT COVER SYSTEM (SCMA48).....	Fig. 14
BELT COVER SYSTEM (SCMA54).....	Fig. 15
GAUGE WHEEL SYSTEM.....	Fig. 16
LINK SYSTEM.....	Fig. 17
LABEL.....	Fig. 18

### OPTIONAL PARTS

UNIVERSAL JOINT SET (SCMA48-OPTION).....	Fig. 19
UNIVERSAL JOINT SET (SCMA54-OPTION).....	Fig. 20

### COMPONENT PARTS

#### COMPONENT PARTS

FOR 8659-101-210-00 ON Fig.1.....	Fig. 21
-----------------------------------	---------



COMPONENT PARTS

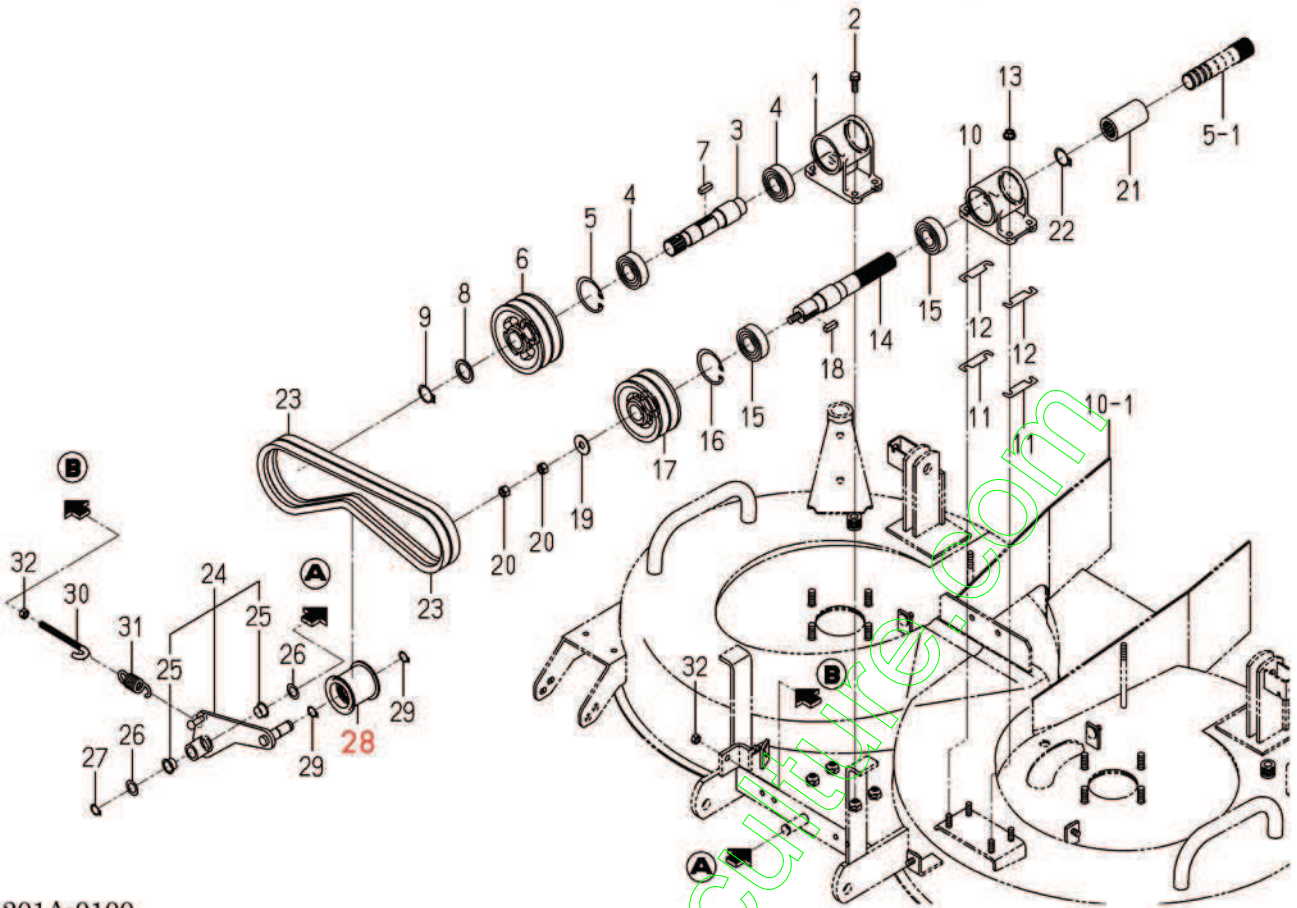
FOR 8662-101-210-00 ON Fig.2..... Fig. 22

[www.emc-motoculture.com](http://www.emc-motoculture.com)





FIG. 3 PULLEY SYSTEM (SCMA48)



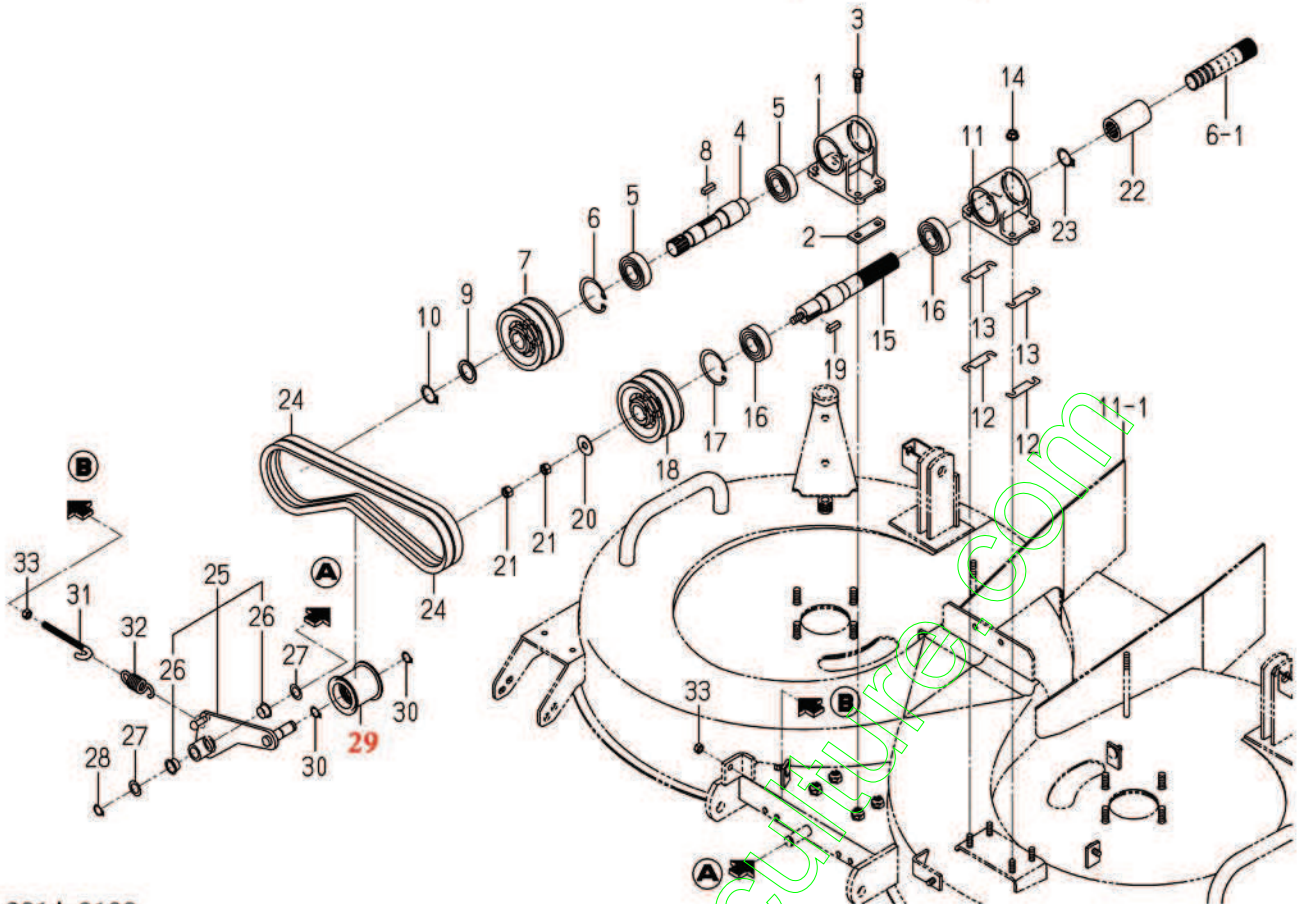
8663-201A-0100

KEY	PART CODE	DESCRIPTION	S P C	TYPE OF MODEL		I T C	C O L	G R P	REMARKS
				SCMA48B	SCMA54B				
1	8663-201-051-00	METAL/INPUT	*	1					
2	V211-260-802-50	BOLT/S	*	4					
3	8663-201-052-00	SHAFT/INPUT	*	1					
4	V600-150-620-50	BEARING,RB/6205SS	*	2					
5	V705-140-052-00	RING,SNAP/52 C	*	1					
6	8663-201-053-00	PULLEY/V2B102	*	1					
7	8663-201-054-00	KEY/07X07X22	*	1					
8	1415-216-602-00	WASHER/26X35X2	*	1					
9	V704-140-025-00	RING,SNAP/25 C	*	1					
10	8663-201-055-00	METAL/OUTPUT	*	1					
11	8663-201-059-00	SHIM/1.0	*	2					
12	8663-201-061-00	SHIM/0.5	*	2					
13	V363-260-008-00	NUT/WASHER	*	4					
14	8663-201-056-00	SHAFT/48/LH/FRONT	*	1					
15	V600-150-620-50	BEARING,RB/6205SS	*	2					
16	V705-140-052-00	RING,SNAP/52 C	*	1					
17	8663-201-057-00	PULLEY/V2B90	*	1					
18	8663-201-054-00	KEY/07X07X22	*	1					
19	1444-116-007-00	WASHER/11X30X2	*	1					
20	V304-260-010-00	NUT	*	2					
21	1560-220-004-10	COUPRING/21X36X65	*	1					
22	V704-140-025-00	RING,SNAP/25 C	*	1					
23	8663-201-058-10	BELT/VB036	*	2					
24	8663-201-510-00	ARM/TENSION ASSY	*	1					
25	2502-407-001-10	BUSH/15X17X11	*	2					
26	3517-205-007-00	WASHER	*	2					
27	V704-140-015-00	RING,SNAP/15 C	*	1					
28	<b>8663-201-062-00</b>	<b>PULLEY/TENSION/50X46</b>	*	1					
	V705-140-035-00	RING, CIRCLIP	*	2					
	V600-150-620-20	BEARING,RB/6202SS	*	2					
29	V704-140-015-00	RING,SNAP/15 C	*	2					
30	3737-341-007-00	ROD,CHAIN TENSION	*	1					





FIG. 4 PULLEY SYSTEM (SCMA54)



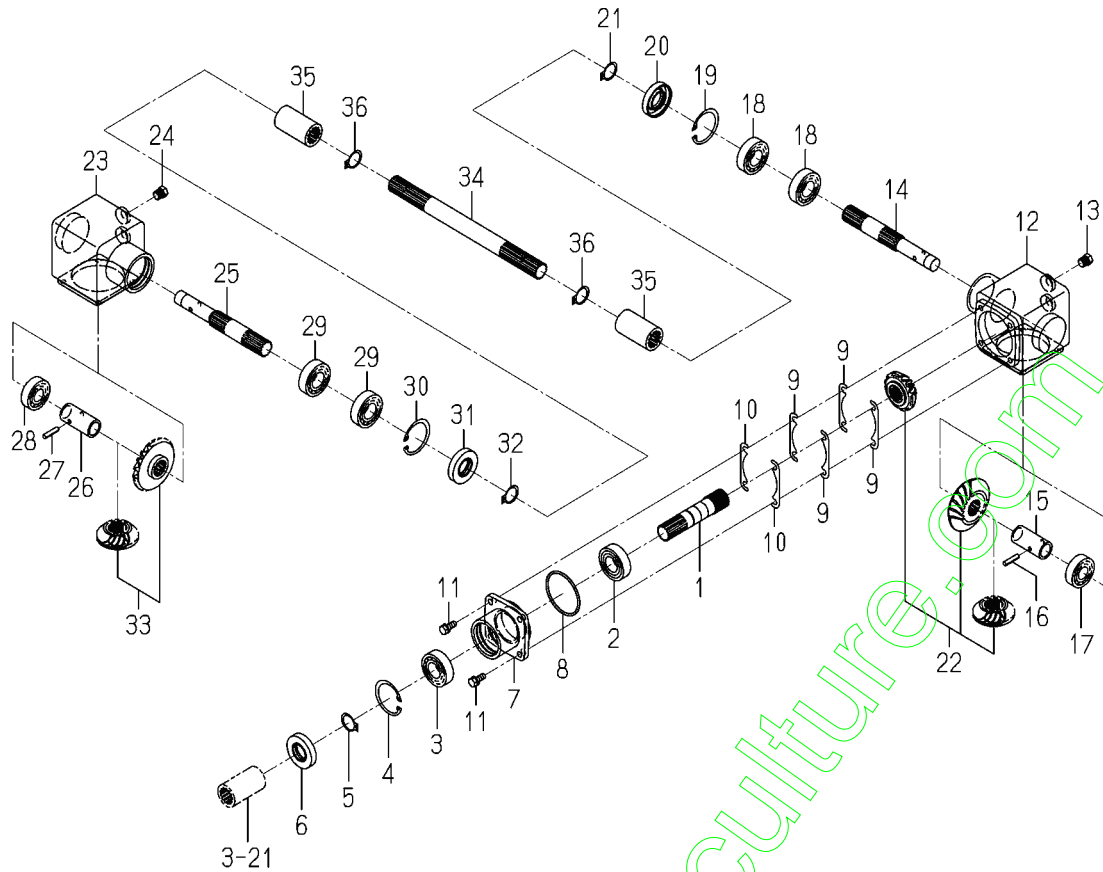
8665-201A-0100

KEY	PART CODE	DESCRIPTION	S P C	TYPE OF MODEL		I T C	C O L	G R P	REMARKS
				SCMA48B	SCMA54B				
1	8663-201-051-00	METAL/INPUT	*		1				
2	8665-201-053-00	PLATE/I/22X64	*		2				
3	V211-260-803-00	BOLT,SEMS	*		4				
4	8663-201-052-00	SHAFT/INPUT	*		1				
5	V600-150-620-50	BEARING,RB/6205SS	*		2				
6	V705-140-052-00	RING,SNAP/52 C	*		1				
7	8665-201-051-00	PULLEY/V2B93	*		1				
8	8663-201-054-00	KEY/07X07X22	*		1				
9	1415-216-602-00	WASHER/26X35X2	*		1				
10	V704-140-025-00	RING,SNAP/25 C	*		1				
11	8663-201-055-00	METAL/OUTPUT	*		1				
12	8663-201-059-00	SHIM/1.0	*		2				
13	8663-201-061-00	SHIM/0.5	*		2				
14	V363-260-008-00	NUT/WASHER	*		4				
15	8663-201-056-00	SHAFT/48/LH/FRONT	*		1				
16	V600-150-620-50	BEARING,RB/6205SS	*		2				
17	V705-140-052-00	RING,SNAP/52 C	*		1				
18	8663-201-057-00	PULLEY/V2B90	*		1				
19	8663-201-054-00	KEY/07X07X22	*		1				
20	1444-116-007-00	WASHER/11X30X2	*		1				
21	V304-260-010-00	NUT	*		2				
22	1560-220-004-10	COUFRING/21X36X65	*		1				
23	V704-140-025-00	RING,SNAP/25 C	*		1				
24	8665-201-052-10	BELT/VB038	*		2				
25	8663-201-510-00	ARM/TENSION ASSY	*		1				
26	2502-407-001-10	BUSH/15X17X11	*		2				
27	3517-205-007-00	WASHER	*		2				
28	V704-140-015-00	RING,SNAP/15 C	*		1				
29	8663-201-062-00	PULLEY/TENSION/50X46	*		1				
	V705-140-035-00	RING,CIRCLIP	*		2				
	V600-150-620-20	BEARING,RB/6202SS	*		2				
30	V704-140-015-00	RING,SNAP/15 C	*		2				





**FIG. 5 BEVEL CASE SYSTEM (SCMA48)**



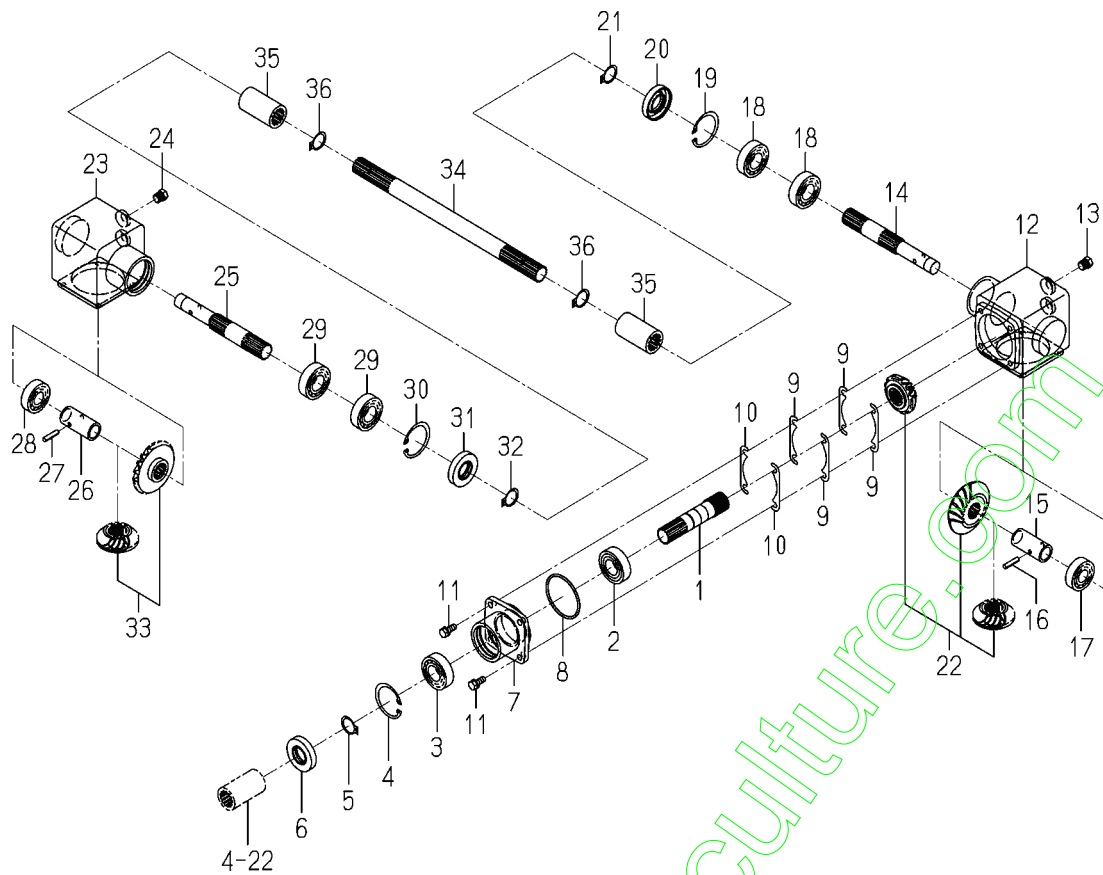
8663-202A-0100

KEY	PART CODE	DESCRIPTION	S P C	TYPE OF MODEL		I T C	C O L	G R P	REMARKS
				SCMA48B	SCMA54B				
1	8663-202-051-00	SHAFT/LH/REAR	*	1					
2	1594-221-001-00	BEARING/BALL 6205SH2	*	1					
3	V600-110-620-50	BEARING,RB/6205	*	1					
4	V705-140-052-00	RING,SNAP/52 C	*	1					
5	V704-140-025-00	RING,SNAP/25 C	*	1					
6	V744-125-521-00	SEAL,OIL/TC255210	*	1					
7	8663-202-052-10	METAL/BEVELCASE	*	1					
8	V721-103-106-50	O-RING/G65	*	1					
9	8663-202-055-00	SHIM/0.1	*	4					
10	8663-202-056-00	SHIM/0.2	*	2					
11	V211-260-802-00	BOLT/S	*	4					
12	8663-202-057-10	CASE/BEVEL/LH	*	1					
13	7955-201-026-00	PLUG,DRAIN (1/4)	*	2					
14	8663-202-058-00	SHAFT/CASE	*	1					
15	8663-202-059-00	HUB/SPACER	*	1					
16	V580-140-602-80	PIN,SPRING/6 X28 W	*	1					
17	V600-110-620-40	BEARING,RB/6204	*	1					
18	V600-110-620-50	BEARING,RB/6205	*	2					
19	V705-140-052-00	RING,SNAP/52 C	*	1					
20	V744-125-521-00	SEAL,OIL/TC255210	*	1					
21	V704-140-025-00	SNAP/RING	*	1					
22	8663-202-510-00	GEAR/BEVEL/21-25-21	*	1					
23	8663-202-062-10	CASE/BEVEL/RH	*	1					
24	7955-201-026-00	PLUG,DRAIN (1/4)	*	2					
25	8663-202-058-00	SHAFT/CASE	*	1					
26	8663-202-059-00	HUB/SPACER	*	1					
27	V580-140-602-80	PIN,SPRING/6 X28 W	*	1					
28	V600-110-620-40	BEARING,RB/6204	*	1					
29	V600-110-620-50	BEARING,RB/6205	*	2					
30	V705-140-052-00	RING,SNAP/52 C	*	1					





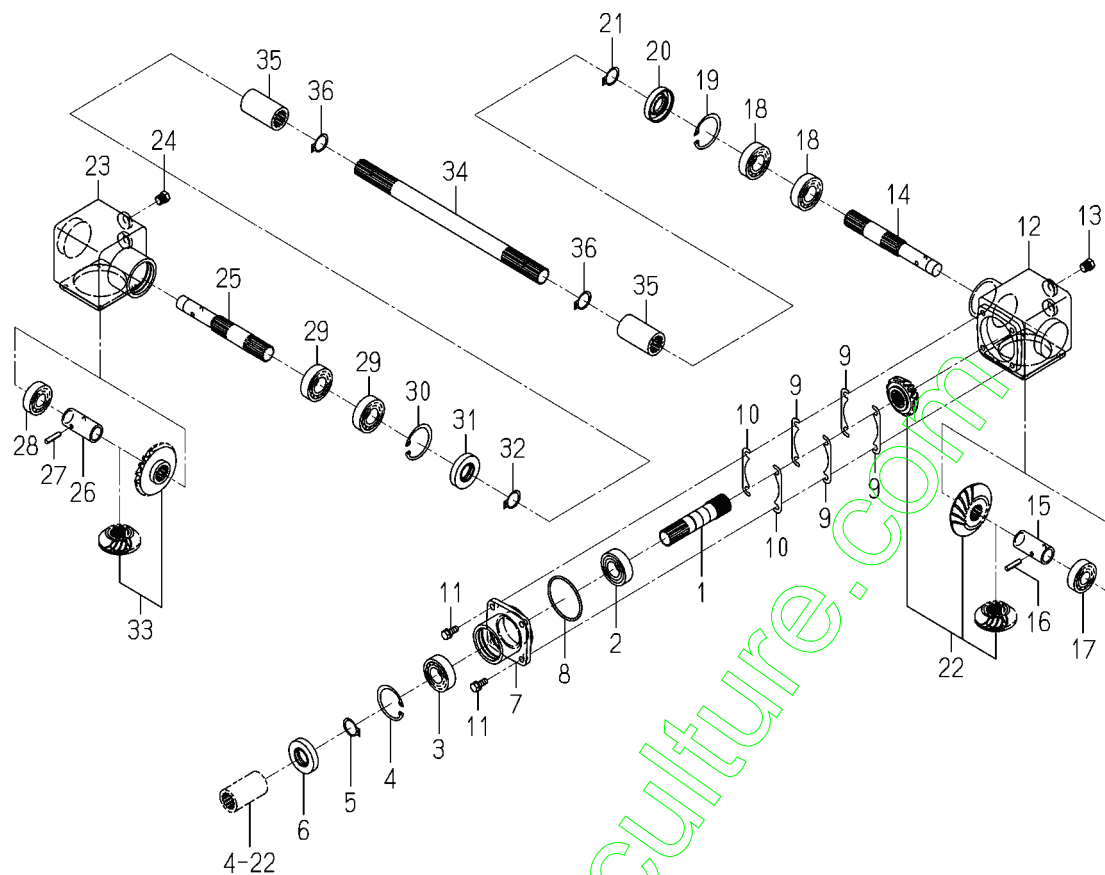
**FIG. 6 BEVEL CASE SYSTEM (SCMA54)**



8665-202A-0100

KEY	PART CODE	DESCRIPTION	S P C	TYPE OF MODEL		I T C	C O L	G R P	REMARKS
				SCMA48B	SCMA54B				
1	8663-202-051-00	SHAFT/LH/REAR	*		1				
2	1594-221-001-00	BEARING/BALL 6205SH2	*		1				
3	V600-110-620-50	BEARING,RB/6205	*		1				
4	V705-140-052-00	RING,SNAP/52 C	*		1				
5	V704-140-025-00	RING,SNAP/25 C	*		1				
6	V744-125-521-00	SEAL,OIL/TC255210	*		1				
7	8663-202-052-10	METAL/BEVELCASE	*		1				
8	V721-103-106-50	O-RING/G65	*		1				
9	8663-202-055-00	SHIM/0.1	*		4				
10	8663-202-056-00	SHIM/0.2	*		2				
11	V211-260-802-00	BOLT/S	*		4				
12	8663-202-057-10	CASE/BEVEL/LH	*		1				
13	7955-201-026-00	PLUG,DRAIN (1/4)	*		2				
14	8663-202-058-00	SHAFT/CASE	*		1				
15	8663-202-059-00	HUB/SPACER	*		1				
16	V580-140-602-80	PIN,SPRING/6 X28 W	*		1				
17	V600-110-620-40	BEARING,RB/6204	*		1				
18	V600-110-620-50	BEARING,RB/6205	*		2				
19	V705-140-052-00	RING,SNAP/52 C	*		1				
20	V744-125-521-00	SEAL,OIL/TC255210	*		1				
21	V704-140-025-00	SNAP/RING	*		1				
22	8663-202-510-00	GEAR/BEVEL/21-25-21	*		1				
23	8663-202-062-10	CASE/BEVEL/RH	*		1				
24	7955-201-026-00	PLUG,DRAIN (1/4)	*		2				
25	8663-202-058-00	SHAFT/CASE	*		1				
26	8663-202-059-00	HUB/SPACER	*		1				
27	V580-140-602-80	PIN,SPRING/6 X28 W	*		1				
28	V600-110-620-40	BEARING,RB/6204	*		1				
29	V600-110-620-50	BEARING,RB/6205	*		2				
30	V705-140-052-00	RING,SNAP/52 C	*		1				

**FIG. 6 BEVEL CASE SYSTEM (SCMA54)**



8665-202A-0100

KEY	PART CODE	DESCRIPTION	S P C	TYPE OF MODEL		I T C	C O L	G R P	REMARKS
				SCMA48B	SCMA54B				
31	V 744-125-521-00	SEAL,OIL/TC255210	*		1				
32	V 704-140-025-00	SNAP/RING	*		1				
33	8 654-201-410-10	GEAR/BEVEL/25-2 SET	*		1				
34	8 665-202-051-00	SHAFT/CENTER/54	*		1				
35	1 560-220-004-10	COUPLING/21X36X65	*		2				
36	V 704-140-025-00	RING,SNAP/25 C	*		2				





































## Numerical Index

8663-097-120-00

Part Code	Fig. Key	Part Code	Fig. Key	Part Code	Fig. Key
1337-401-006-00	3 31	8595-901-007-00	18 3	8663-201-056-00	3 14
	4 32	8654-101-221-00	19 2		4 15
1415-216-602-00	3 8		20 2	8663-201-057-00	3 17
	4 9	8654-101-230-00	19 5		4 18
1444-116-007-00	3 19		20 5	8663-201-058-10	3 23
	4 20	8654-101-232-00	19 6	8663-201-059-00	3 11
1560-220-004-10	3 21		20 6		4 12
	4 22	8654-101-233-00	19 7	8663-201-061-00	3 12
	5 35		20 7		4 13
	6 35	8654-201-410-10	5 33	8663-201-510-00	3 24
1560-601-028-00	10 3		6 33		4 25
	11 3	8654-501-283-00	16 5	8663-202-051-00	5 1
	17 3	8654-901-002-00	18 5		6 1
	17 7	8657-101-501-00	19 12	8663-202-052-10	5 7
1593-901-015-00	18 6		20 12		6 7
1594-221-001-00	5 2	8657-501-530-00	16 4	8663-202-055-00	5 9
	6 2	8657-608-720-00	17 5		6 9
2500-901-014-30	18 4	8659-101-210-00	1 1	8663-202-056-00	5 10
2500-901-027-00	18 1	8659-101-211-00	21 1		6 10
2502-407-001-10	3 25		22 1	8663-202-057-10	5 12
	4 26	8659-101-212-00	21 2		6 12
3304-521-015-00	3 28		22 2	8663-202-058-00	5 14
	4 29	8659-101-213-00	21 3		5 25
3517-205-007-00	3 26	8659-101-214-00	21 4		6 14
	4 27	8659-101-215-00	21 5		6 25
3737-341-007-00	3 30		22 5	8663-202-059-00	5 15
	4 31	8662-101-210-00	2 1		5 26
7821-102-008-00	19 10	8662-101-213-00	22 3		6 15
	20 10	8662-101-214-00	22 4		6 26
7821-102-220-00	19 11	8663-101-210-00	19 1	8663-202-061-00	5 34
	20 11	8663-101-211-00	19 3	8663-202-062-10	5 23
7955-201-026-00	5 13	8663-101-212-00	19 4		6 23
	5 24	8663-101-213-00	19 8	8663-202-510-00	5 22
	6 13	8663-101-214-00	19 9		6 22
	6 24	8663-201-051-00	3 1	8663-301-004-00	7 15
8595-201-021-00	7 3		4 1	8663-301-051-00	7 1
8595-201-022-00	7 4	8663-201-052-00	3 3	8663-301-052-00	7 8
8595-501-001-10	16 13		4 4	8663-301-053-00	7 14
	16 15	8663-201-053-00	3 6	8663-306-001-10	8 1
8595-505-051-30	16 16	8663-201-054-00	3 7	8663-306-002-10	8 2
8595-608-082-00	10 2		3 18	8663-306-004-00	8 4
	11 2		4 8		9 4
	17 2		4 19	8663-306-210-10	8 3
	17 6	8663-201-055-00	3 10		9 3
8595-901-006-00	18 2		4 11	8663-402-002-00	10 5

## Numerical Index

8663-097-120-00

Part Code	Fig. Key	Part Code	Fig. Key	Part Code	Fig. Key
8663-402-002-00	11 5	V360-260-012-00	16 17	V704-140-015-00	4 30
8663-402-510-20	10 1	V363-260-008-00	3 13	V704-140-025-00	3 9
8663-406-001-00	12 3		4 14		3 22
	13 3		12 2		4 10
8663-406-510-00	12 1		12 4		4 23
8663-407-051-00	14 1		13 2		5 5
8663-501-001-10	16 6		13 4		5 21
8663-501-210-00	16 1		14 2		5 32
8663-501-220-00	16 2		15 2		5 36
8663-501-240-00	16 3	V401-160-010-00	7 7		6 5
8663-501-510-00	16 11	V401-160-012-00	8 6		6 21
8663-501-520-00	16 12		9 6		6 32
8663-608-210-00	17 1	V401-160-016-00	16 10		6 36
8663-901-001-00	18 7	V411-260-008-00	12 6	V705-140-052-00	3 5
8665-101-210-00	20 1		13 6		3 16
8665-101-211-00	20 3	V411-260-022-00	16 7		4 6
8665-101-212-00	20 4	V580-140-504-00	10 4		4 17
8665-101-213-00	20 8		11 4		5 4
8665-101-214-00	20 9		17 4		5 19
8665-201-051-00	4 7		17 8		5 30
8665-201-052-10	4 24	V580-140-602-80	5 16		6 4
8665-201-053-00	4 2		5 27		6 19
8665-202-051-00	6 34		6 16		6 30
8665-306-001-10	9 1		6 27		7 13
8665-306-002-10	9 2	V580-140-804-00	1 2	V707-140-062-00	7 10
8665-402-510-20	11 1		2 2	V721-103-106-50	5 8
8665-406-510-00	13 1	V600-110-620-40	5 17		6 8
8665-407-510-10	15 1		5 28	V721-103-107-50	7 2
V203-361-203-50	8 5		6 17	V744-125-521-00	5 6
	9 5		6 28		5 20
V211-260-802-00	5 11	V600-110-620-50	5 3		5 31
	6 11		5 18		6 6
	7 5		5 29		6 20
	16 14		6 3		6 31
V211-260-802-50	3 2		6 18		7 12
V211-260-803-00	4 3		6 29	V760-150-000-00	16 8
V304-260-008-00	3 32		7 11		
	4 33	V600-110-620-60	7 9		
	12 5	V600-150-620-50	3 4		
	13 5		3 15		
V304-260-010-00	3 20		4 5		
	4 21		4 16		
	7 6	V704-140-015-00	3 27		
V304-460-016-00	16 9		3 29		
V334-460-022-00	17 9		4 28		

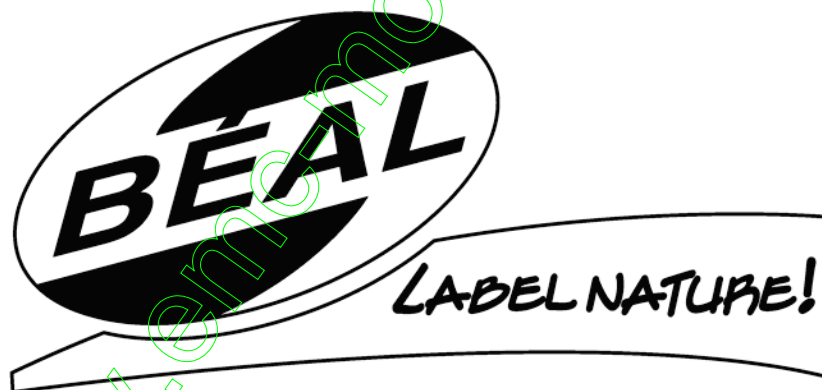
## Alphabetical Index

8663-097-120-00

Description	Fig. Key	Description	Fig. Key	Description	Fig. Key
ARM/FRONT COMP	17 1	CASE/BEVEL/RH	6 23	LABEL/PTO	18 5
ARM/TENSION ASSY	3 24	CHAIN ASSY	19 11	LABEL/WARNING/BELT	18 2
	4 25		20 11	LABEL/WARNING/HOT	18 3
AS YOKE ASSY	19 12	COLLAR/BLADE	7 14	METAL/BEVELCASE	5 7
	20 12	COUPRING/21X36X65	3 21		6 7
ASYOKE ASSY	21 2		4 22	METAL/BLADE/B	7 1
	22 2		5 35	METAL/INPUT	3 1
BEARING, RB/6204	5 17		6 35		4 1
	5 28	COVER/BELT/B	14 1	METAL/OUTPUT	3 10
	6 17	COVER/BELT/B COMP	15 1		4 11
BEARING, RB/6205	6 28	COVER/DISCHARGE/B	12 1	NIPPLE, GREASE	16 8
	5 3		13 1	NUT	3 20
	5 18	DECK/MOWER/48/B COMP	10 1		3 32
	5 29	DECK/MOWER/54/B COMP	11 1		4 21
	6 3	FITTINGYOKE	19 2		4 33
BEARING, RB/6205SS	6 18		20 2		7 6
	6 29		21 5		12 5
	7 11		22 5		13 5
	3 4	FORK/M22 COMP	17 5		17 9
	3 15	FORK/WHEEL/LH COMP	16 1	NUT/M16	16 9
BEARING, RB/6206	4 5	FORK/WHEEL/RH COMP	16 2	NUT/WASHER	3 13
BEARING/BALL 6205SH2	4 16	GEAR/BEVEL/21-25-21	5 22		4 14
	7 9		6 22		12 2
	5 2	GEAR/BEVEL/25-2 SET	5 33		12 4
	6 2		6 33		13 2
BELT/VB036	3 23	GREASENIPPLE	19 6		13 4
BELT/VB038	4 24		20 6		14 2
BLADE/60X640/C	8 1	HUB/SPACER	5 15		15 2
BLADE/60X640/D	8 2		5 26		16 17
BLADE/60X716/C	9 1		6 15	O-RING/G65	5 8
BLADE/60X716/D	9 2		6 26		6 8
BOLT	8 5	JOINT/UNIVERSAL SET	1 1	O-RING/G75	7 2
	9 5		2 1	PIN, SPRING/5 X40 W	10 4
BOLT, SEMS	4 3		19 1		11 4
BOLT/S	3 2		20 1		17 4
	5 11	JOURNALCROSSE ASSY	19 5		17 8
	6 11		20 5	PIN, SPRING/6 X28 W	5 16
	7 5	KEY/07X07X22	3 7		5 27
BUSH/15X17X11	16 14		3 18		6 16
	3 25		4 8		6 27
BUSH/22X25X25	4 26		4 19	PIN, SPRING/8 X40 W	1 2
CASE/BEVEL/LH	16 5	LABEL/CE	18 1		2 2
	5 12	LABEL/DANGER	18 4	PIN/08X18	7 15
	6 12	LABEL/GAUGEWHEEL	18 7	PIN/08X60 COMP	16 3
CASE/BEVEL/RH	5 23	LABEL/MAINTENANCE	18 6	PIN/12X117	16 16

# Alphabetical Index

Description	Fig. Key	Description	Fig. Key	Description	Fig. Key
PIN/16X96	10 2	RING/SNAP	7 10	SLEEVEYOKE	22 3
	11 2	ROD, CHAIN TENSION	3 30	SNAP/RING	5 21
	17 2		4 31		5 32
	17 6	SAFETYGUARD/IN	19 8		6 21
PIN/22X106	16 6		20 8		6 32
PLATE/I/22X64	4 2	SAFETYGUARD/OUT	19 9	SPRING	3 31
PLATE/I/80X110 COMP	8 3		20 9		4 32
	9 3	SEAL, OIL/TC255210	5 6	SPRING/HCO42	10 3
PLUG, DRAIN (1/4)	5 13		5 20		11 3
	5 24		5 31		17 3
PLUG/HOSE/A	6 13		6 6		17 7
	6 24		6 20	SPRING/HC110	12 3
	10 5		6 31		13 3
	11 5		7 12	STAY/GAUGE/LH COMP	16 11
PULLEY/FT50X49	3 28	SHAFT/48/LH/FRONT	3 14	STAY/GAUGE/RH COMP	16 12
PULLEY/V2B102	4 29		4 15	SURCLIP/HOLE	19 7
	3 6	SHAFT/BLADE/B	7 8		20 7
PULLEY/V2B90	3 17	SHAFT/CASE	5 14	UJ ASSY	21 1
	4 18		5 25		22 1
PULLEY/V2B93	4 7		6 14	WASHER	3 26
RING, SNAP/15 C	3 27		6 25		4 27
	3 29	SHAFT/CENTER/48	5 34	WASHER, PL/M 8	12 6
	4 28	SHAFT/CENTER/54	6 34		13 6
	4 30	SHAFT/INPUT	3 3	WASHER, PL/M22	16 7
RING, SNAP/25 C	3 9		4 4	WASHER, SP/M10	7 7
	3 22	SHAFT/LH/REAR	5 1	WASHER, SP/M12	8 6
	4 10		6 1		9 6
	4 23	SHAFTYOKE	19 3	WASHER, SP/M16	16 10
	5 5		20 3	WASHER/11X30X2	3 19
	5 36		22 4		4 20
RING, SNAP/52 C	6 5	SHIM/0.1	5 9	WASHER/26X35X2	3 8
	6 36		6 9		4 9
	3 5		7 3	WHEEL/GAUGE ASSY	16 4
	3 16	SHIM/0.2	5 10	WHEEL/GAUGE/FRONT	16 13
	4 6		6 10		16 15
	4 17		7 4	YOKE/SHAFT	21 4
	5 4	SHIM/0.5	3 12		
	5 19		4 13		
	5 30	SHIM/1.0	3 11		
	6 4		4 12		
RING/SLIDE	6 19	SHIM/1.2	8 4		
	6 30		9 4		
	7 13	SLEEVEYOKE	19 4		
	19 10		20 4		
	20 10		21 3		



**Yvan Béal - 21, av. de l'Agriculture - B.P 16  
Z.I. du Brézet - 63014 Clermont-Ferrand Cedex 2  
Tél: 04 73 91 93 51 - Télécopie : 04 73 90 23 11  
www.yvanbeal.fr - E-mail : info@yvanbeal.fr  
R.C.S. B 304 973 886 - S.A.S. au capital de 612 000 €**