



PIECES DETACHEES

Plateau de coupe

SRM48

TM3160E4



Yves Béal 21, Av. de l'Agriculture - B.P. 10
Z.I. du Breuil 63314 Clermont-Ferrand Cedex 2
Tél : 04 73 91 93 51 Téléphone : 04 73 90 23 11
www.yvesbeal.fr Email : info@yvesbeal.fr
R.C. B 304 973 886 - SIREN 304 973 886

8597-097-1000-0

03-000176-050216

Directions for use of Parts Catalogue

1. Applicable model of machines

All component and option parts used for SRM48-TM3160 Mower are listed in this parts catalogue.

NOTES: SRM48-TM3160..... FOR TM3160 (STD)

2. Explanation for head paragraph

KEY	PART CODE	DESCRIPTION	SPC	TYPE OF MODEL						I T C	C O L	G R P	REMARKS
				SSM48M	SSM48F	SSM48G	SRM48M	SRM48F	SRM48G				
1	8595-211-001-20	CASE/UPPER	*	1									
1A	8657-201-081-00	CASE/UPPER	*	1			1						
2	8595-211-002-10	CASE/LOWER	*	1			1						
3	V523-100-801-80	PIN	*	2			2						
4	V211-260-803-00	BOLT, SEMS	*	6			6						

- ① KEY shows the location of parts diagramed in the illustration.
- ② Parts numbers begin with `V` and `W` are standard parts of the market.
- ③ `LH` and `RH` on the parts name are described against the moving direction of the machine or are described on the condition how to install parts on the machines.
- ④ SPC : The following symbol classifies parts to be used for machines.
 - `*` means standard parts.
 - `T` shows that the parts can be installed as optional parts.
 - `R` shows that the parts can be used as applicable parts to replace originally equipped parts.

- ⑤ Upper column : QTY shows the number of parts to be used for one unit of machine.

`M` is indicated for parts supplied by a meter long.

`L` is indicated for parts supplied by liter.

`AR` is indicated for parts need to be adjusted or regulated.

Lower column : serial number

—229 means serial number up to 229.

230— means serial number 230 and after.

- ⑥ ITC : Interchangeability

`1`...OLD ← NEW

New parts can be used in place of the old parts.

`2`...OLD → NEW

Old parts can be used in place of the new parts.

`3`...OLD →← NEW

Old parts and new parts can not be replaced each other.

- ⑦ COL : Color code

Color is signified with color code number for colored parts.

Please see the color list shown in the next page.

- ⑧ GRP : Parts shown in this column can be replaced by SET parts.

Example : Parts marked Ⓐ can be replaced by parts marked Ⓑ, and Ⓓ for Ⓒ, so the rest follow in the same alphabetical order.

- ⑨ Remarks

* Other maker's part code number is shown in this column.

* When Fig. No. is shown in the Remark column of SET parts or ASSY parts, each of their component parts are listed in said Fig. No.

3. Color :

The following colors are used color parts.

COLOR CODE	COLOR	SPRAY TYPE CODE NUMBER	PAINTS 4K DRUM	PAINTS 16K DRUM
7 F	MIRROR BLACK	1300-954-001-10	1300-954-003-00	1300-954-004-00

NOTE : Color code is signified only for the parts assigned by the maker as color parts.

4. Serial Numbers :

For chassies serial number is shown on the LABEL.

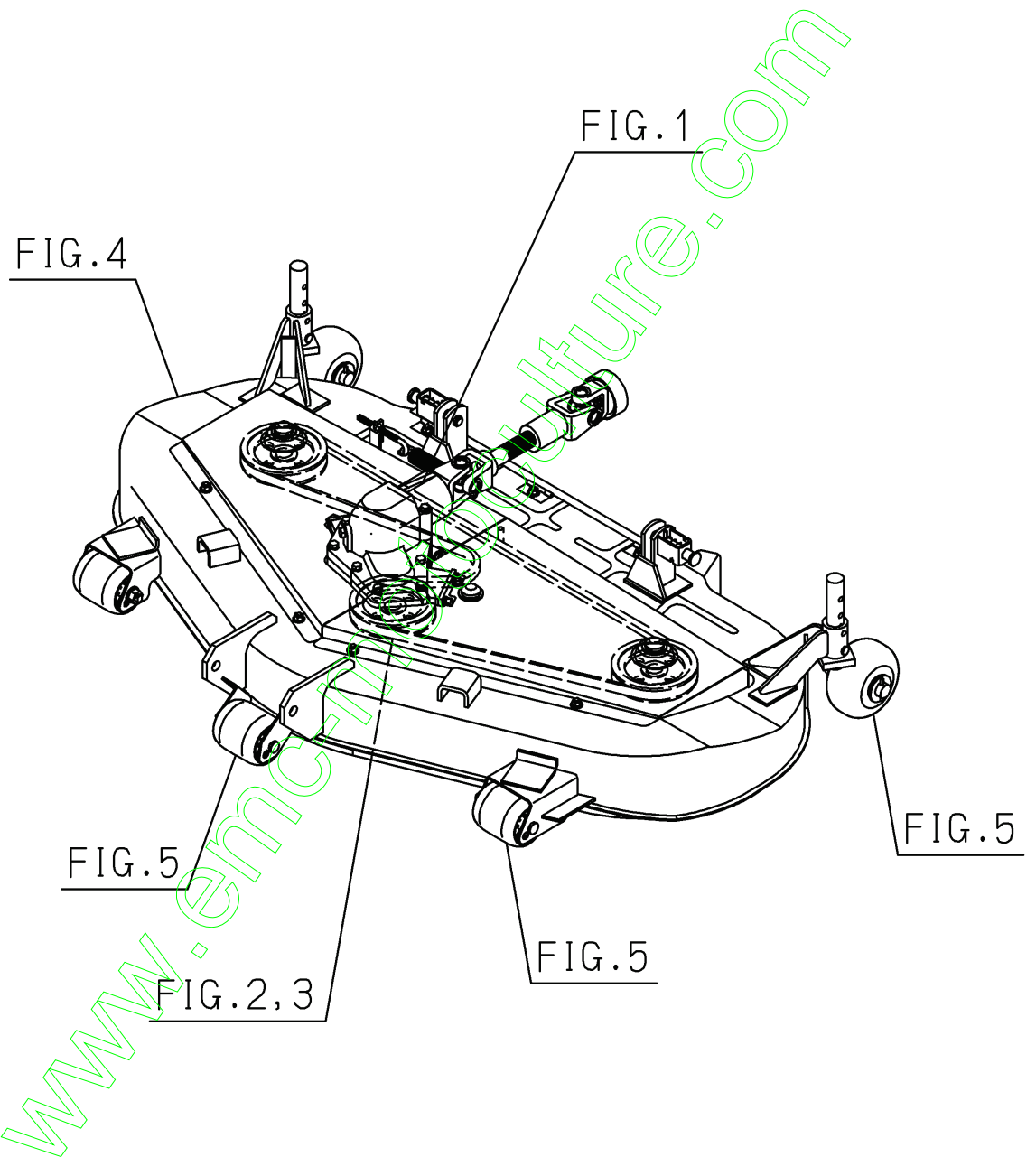
Please see



5. Parts Order

- 1) Parts numbers listed in the parts catalogue are all registered in “ISEKI on-line computer”.
- 2) When you order parts, please make sure of correct numbers.
- 3) When substitute parts is available, the part number ordered will be automatically turned to a new part number.
- 4) Please be sure to use “ISEKI GENUINE PARTS”.

Any other similar parts other than ISEKI parts when used may cause a trouble that makes us unable to repair or guarantee the warrant.



Contents

SRM48

UNIVERSAL JOINT,CASE (BEVEL) SYSTEM.....	Fig. 1
PULLEY,V BELT SYSTEM.....	Fig. 2
METAL,BLADE SYSTEM.....	Fig. 3
MOWER DECK,COVER SYSTEM.....	Fig. 4
GAUGE WHEEL SYSTEM.....	Fig. 5
LINK SYSTEM(1/2)(2/2).....	Fig. 6
CYLINDER SYSTEM.....	Fig. 7
LABEL.....	Fig. 8

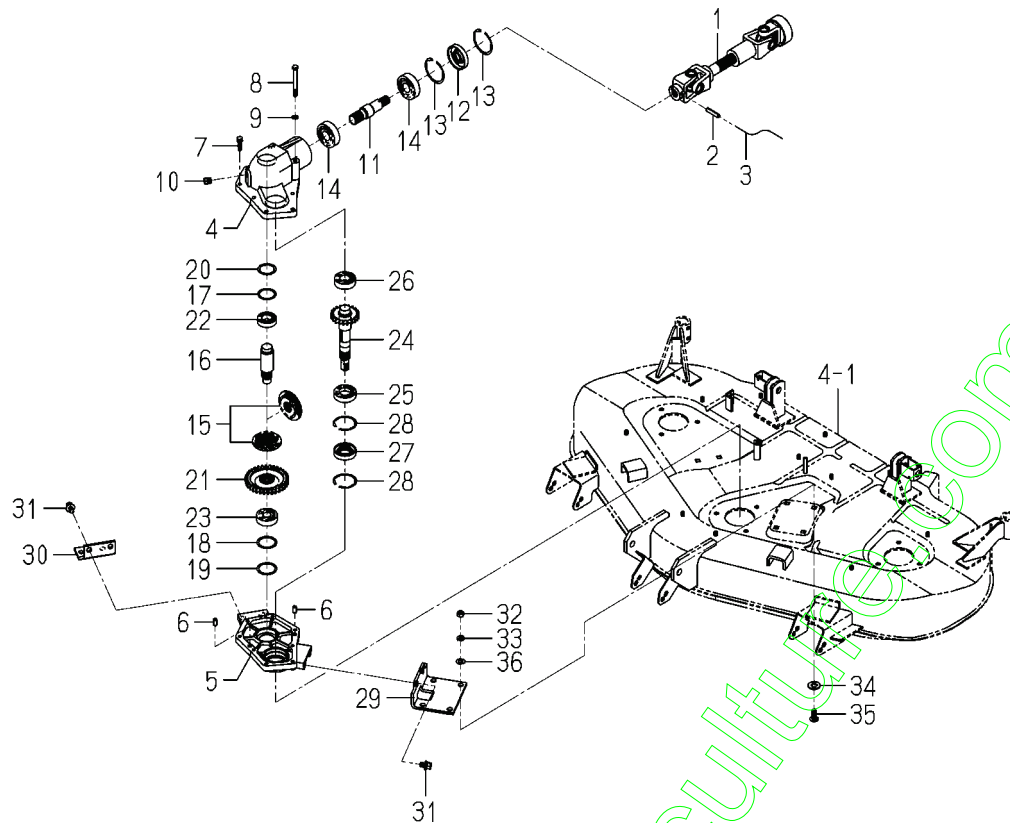
OPTIONAL PARTS

HEIGHT ADJUST SET (OPTION).....	Fig. 9
---------------------------------	--------

COMPONENT PARTS

COMPONENT PARTS	
FOR 8595-101-600-00 ON Fig.1.....	Fig. 10

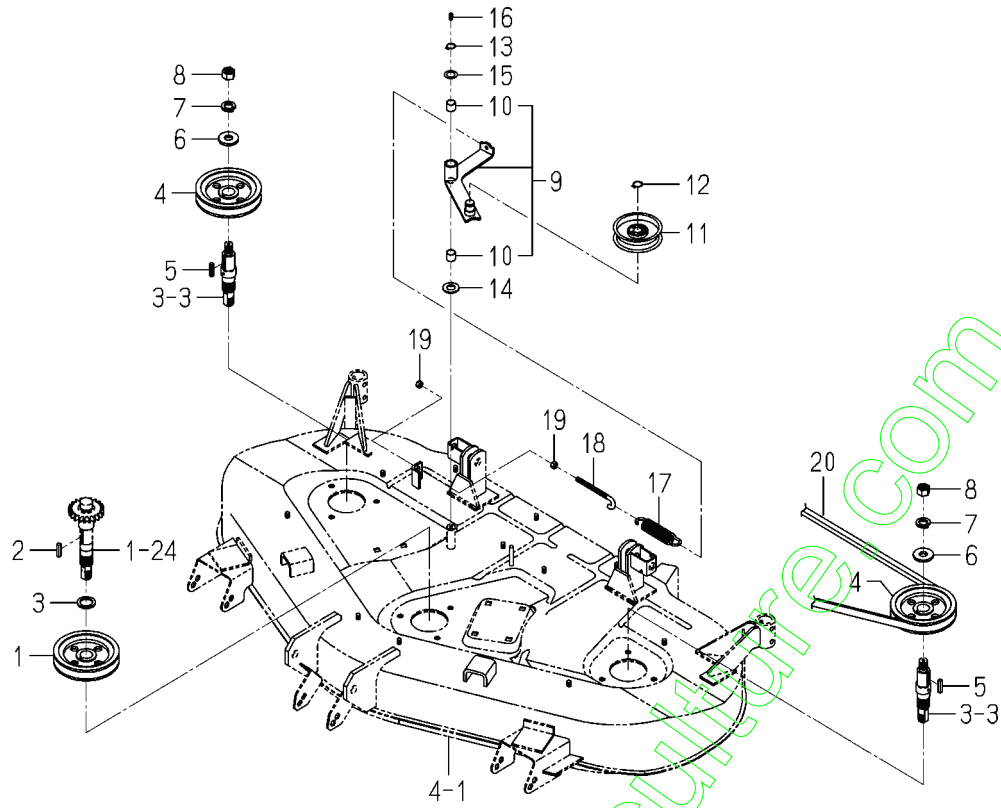
FIG. 1 UNIVERSAL JOINT,CASE (BEVEL) SYSTEM



8595-101I-0100,8597-201-0100

KEY	PART CODE	DESCRIPTION	S P C	TYPE OF MODEL		I T C	C O L	G R P	REMARKS
				SRM48	TM3160				
1	8595-101-600-00	JOINT/UNIVERSAL SET	*	1					FIG 010
2	V580-140-604-00	PIN,SPRING/6 X40 W	*	1					
3		WIRE	*	1					
4	8657-201-081-00	CASE/UPPER	*	1					
5	8595-211-002-10	CASE/LOWER	*	1					
6	V523-100-801-80	PIN	*	2					
7	V211-260-803-00	BOLT,SEMS	*	6					
8	V201-260-808-00	BOLT/M 8X80	*	2					
9	V401-160-008-00	WASHER,SP/M 8	*	2					
10	7955-201-026-00	PLUG,DRAIN (1/4)	*	1					
11	8657-201-082-00	SHAFT/INPUT	*	1					
12	8657-201-083-00	SEAL/OIL	*	1					
13	V707-140-062-00	RING/SNAP	*	2					
14	1650-219-009-00	BEARING/BALL	*	2					
15	8595-211-200-20	GEAR/BEVEL/21-2 SET	*	1					
16	8595-211-004-20	SHAFT/COUNTER	*	1					
17	8595-211-005-10	SHIM/0.2	*	1					
18	8595-211-010-00	SHIM/0.2	*	1					
19	8595-211-021-00	SHIM/0.1	*	1					
20	7970-201-004-00	SHIM,A	*	1					
21	8595-211-006-30	GEAR/SPUR/34	*	1					
22	V600-110-600-50	BEARING,RB/6005	*	1					
23	8657-201-084-00	BEARING/BALL	*	1					
24	8597-201-053-10	GEAR/SPUR/21	*	1					
25	8657-201-085-00	BEARING/BALL	*	1					
26	8657-201-086-00	BEARING/BALL	*	1					
27	8595-211-024-00	SEAL/OIL	*	1					
28	V707-140-055-00	RING/SNAP	*	2					
29	8597-201-051-00	PLATE/L/130X109	*	1					
30	8597-201-052-00	PLATE/STAY	*	1					

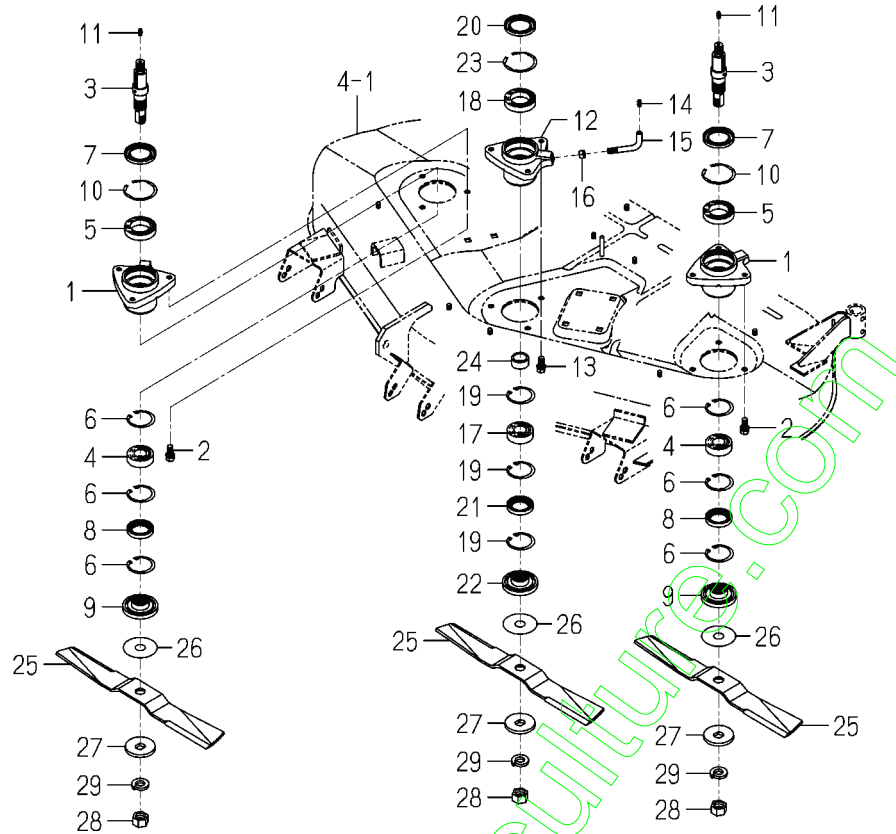
FIG. 2 PULLEY,V BELT SYSTEM



8597-202A-0100,8595-203B-0100

KEY	PART CODE	DESCRIPTION	S P C	TYPE OF MODEL		I T C	C O L	G R P	REMARKS
				SRM48	TM3160				
1	8657-202-001-00	PULLEY/VB125	*	1					
2	8654-202-016-00	KEY/06X06X28	*	1					
3	1434-211-004-00	COLLAR/26X36X3	*	1					
4	8657-202-001-00	PULLEY/VB125	*	2					
5	8654-202-016-00	KEY/06X06X28	*	2					
6	3746-111-011-00	WASHER	*	2					
7	V401-160-016-00	WASHER,SP/M16	*	2					
8	V304-460-016-00	NUT/M16	*	2					
9	8597-202-500-00	ARM/TENSION ASSY	*	1					
10	8597-202-501-00	BUSH/16X18X15	*	2					
11	8593-014-200-10	PULLEY COMP	*	1					
12	V704-140-017-00	RING,SNAP/17 C	*	1					
13	V704-140-016-00	RING,SNAP/16 C	*	1					
14	V411-260-016-00	WASHER / M16	*	1					
15	3621-211-003-00	WASHER	*	1					
16	V760-150-000-00	NIPPLE,GREASE	*	1					
17	3737-341-006-00	SPRING,CHAIN TENSION	*	1					
18	3737-341-007-00	ROD,CHAIN TENSION	*	1					
19	V304-260-008-00	NUT	*	2					
20	8595-203-003-00	BELT/VB092	*	1					

FIG. 3 METAL, BLADE SYSTEM

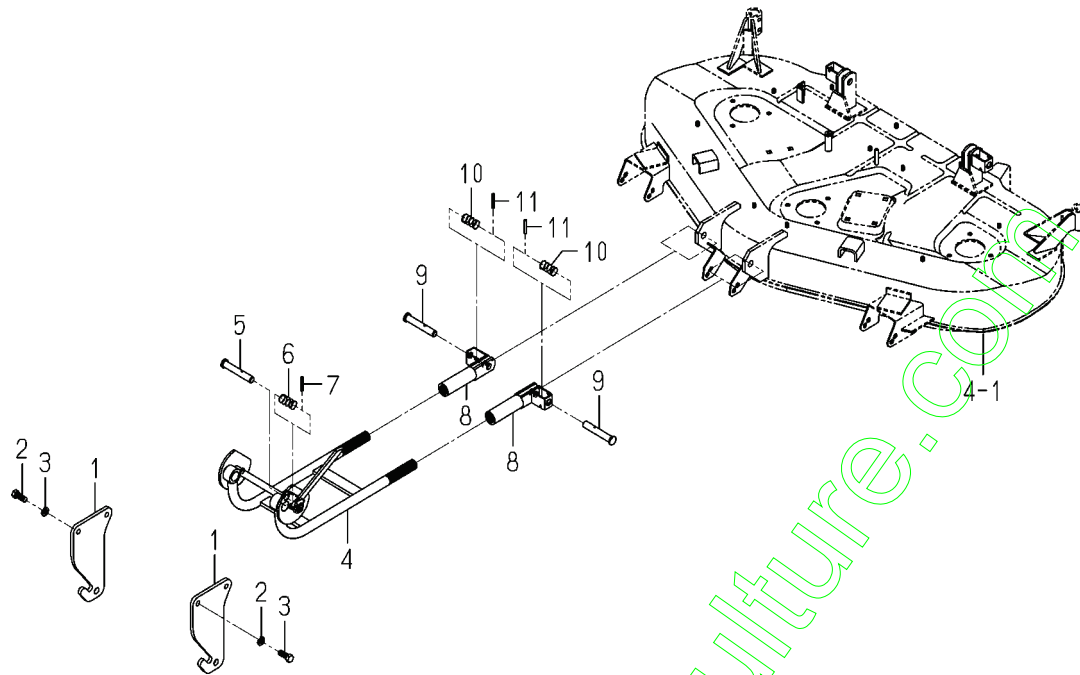


8595-301D-0100,8597-306C-0100

KEY	PART CODE	DESCRIPTION	S P C	TYPE OF MODEL		I T C	C O L	G R P	REMARKS
				SRM48	TM3160				
1	8657-301-004-00	METAL/SIDE	*	2					
2	V211-261-002-50	BOLT(S) M10X25	*	6					
3	8595-301-031-00	SHAFT/BRADE	*	2					
4	1594-221-001-00	BEARING/BALL 6205SH2	*	2					
5	V600-110-690-80	BEARING	*	2					
6	V705-140-052-00	RING,SNAP/52 C	*	6					
7	8654-301-004-00	SEAL/OIL	*	2					
8	V744-135-520-80	SEAL,OIL/TC35528	*	2					
9	8657-301-007-00	COLLAR/BRADE	*	2					
10	V707-140-062-00	RING/SNAP	*	2					
11	V760-150-000-00	NIPPLE,GREASE	*	2					
12	8657-301-005-00	METAL/CENTER	*	1					
13	V211-261-002-50	BOLT(S) M10X25	*	3					
14	V760-150-000-00	NIPPLE,GREASE	*	1					
15	8657-301-009-00	PIPE/GREASE	*	1					
16	V304-260-010-00	NUT	*	1					
17	1594-221-001-00	BEARING/BALL 6205SH2	*	1					
18	V600-110-690-80	BEARING	*	1					
19	V705-140-052-00	RING,SNAP/52 C	*	3					
20	8654-301-004-00	SEAL/OIL	*	1					
21	V744-135-520-80	SEAL,OIL/TC35528	*	1					
22	8657-301-007-00	COLLAR/BRADE	*	1					
23	V707-140-062-00	RING/SNAP	*	1					
24	8657-301-008-00	COLLER/26X34X15	*	1					
25	8597-306-002-00	BLADE/50X429/C	*	3					
26	8595-306-006-00	SHIM/1.2	*	3					
27	8595-306-005-00	WASHER/20X60X06	*	3					
28	8595-306-007-00	NUT/M20X1.5	*	3					
29	V401-160-020-00	WASHER,SP/M20	*	3					

FIG. 6 LINK SYSTEM(1/2)

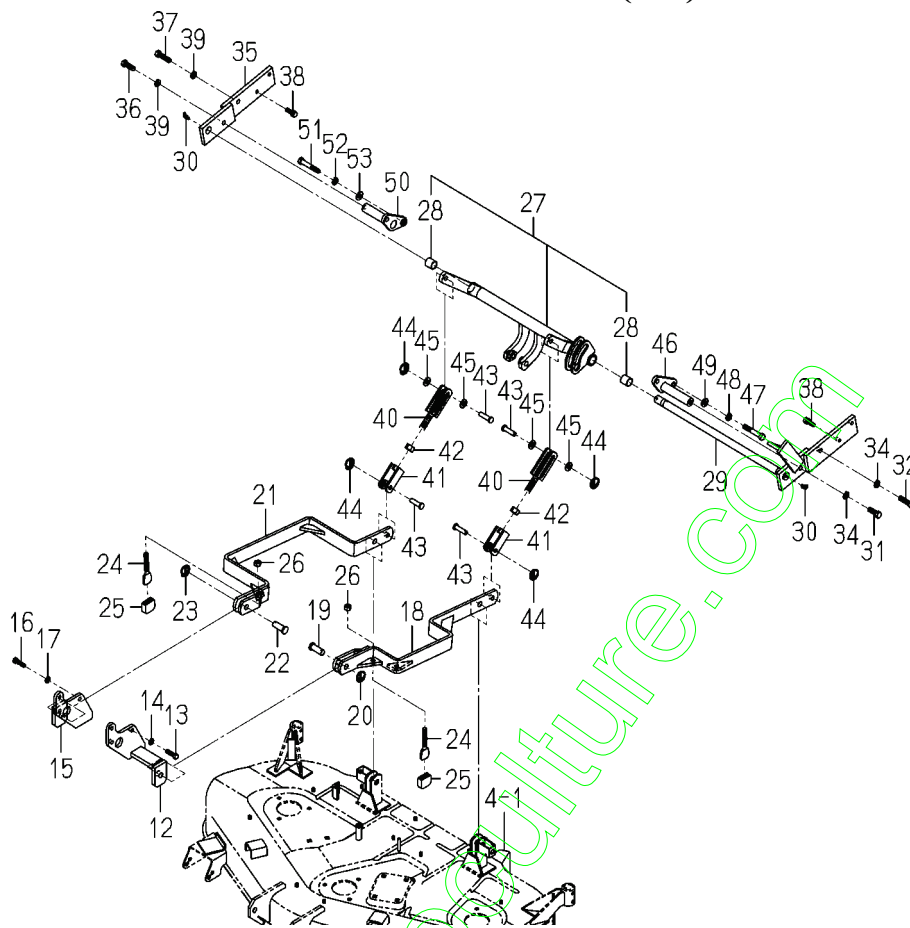
KEY12~30-PLEASE SEE NEXT PAGE



8595-609-0100

KEY	PART CODE	DESCRIPTION	S P C	TYPE OF MODEL		I T C	C O L	G R P	REMARKS
				SRM48	TM3160				
1	8595-609-021-00	BRACKET/FRONT	*	2					
2	V201-361-203-00	BOLT/M12X30	*	4					
3	V401-160-012-00	WASHER,SP/M12	*	4					
4	8657-608-810-10	ARM/FRONT COMP	*	1			7F		
5	8595-608-082-00	PIN/16X96	*	1					
6	1560-601-028-00	SPRING/HC042	*	1					
7	V580-140-504-00	PIN,SPRING/5 X40 W	*	1					
8	8595-608-820-00	HITCH/ARM COMP	*	2			7F		
9	8595-608-082-00	PIN/16X96	*	2					
10	1560-601-028-00	SPRING/HC042	*	2					
11	V580-140-504-00	PIN,SPRING/5 X40 W	*	2					
12	8595-609-380-00	BRACKET/MID/LH COMP	*	1					
13	V203-361-003-50	BOLT	*	3					
14	V401-160-010-00	WASHER,SP/M10	*	3					
15	8595-609-390-00	BRACKET/MID/RH COMP	*	1					
16	V203-361-003-50	BOLT	*	3					
17	V401-160-010-00	WASHER,SP/M10	*	3					
18	8595-609-210-00	ARM/MID/LH COMP	*	1					
19	8657-608-052-00	PIN/16X43	*	1					
20	1427-317-003-00	CLIP,PIN	*	1					
21	8595-609-220-00	ARM/MID/RH COMP	*	1					
22	8657-608-052-00	PIN/16X43	*	1					
23	1427-317-003-00	CLIP,PIN	*	1					
24	8595-608-870-00	STOPPER COMP	*	2					
25	1593-101-012-00	STOPPER	*	2					
26	V304-260-012-00	NUT/M12	*	2					
27	8595-609-230-00	LINK/REAR ASSY	*	1					
28	8654-501-283-00	BUSH/22X25X25	*	2					
29	8595-609-350-00	BRACKET/REAR/LH COMP	*	1					
30	V762-150-000-00	NIPPLE,GREASE/B-M6F	*	2					

FIG. 6 LINK SYSTEM(2/2)



8595-609-0100

KEY	PART CODE	DESCRIPTION	S P C	TYPE OF MODEL		I T C	C O L	G R P	REMARKS
				SRM48	TM3160				
31	V 201-361-203-50	BOLT/M12X35	*	1					
32	V 201-361-204-50	BOLT/M12X45	*	1					
33	V 211-561-003-00	BOLT/M10X30	*	1					
34	V 401-160-012-00	WASHER,SP/M12	*	2					
35	8595-609-260-00	BRACKET/REAR/RH COMP	*	1					
36	V 201-361-203-50	BOLT/M12X35	*	1					
37	V 201-361-204-50	BOLT/M12X45	*	1					
38	V 211-561-003-00	BOLT/M10X30	*	1					
39	V 401-160-012-00	WASHER,SP/M12	*	2					
40	8595-609-310-00	FORK/A COMP	*	2					
41	8595-609-320-00	FORK/B COMP	*	2					
42	V 304-260-016-00	NUT/M16	*	2					
43	8657-608-053-10	PIN/12X42	*	4					
44	1427-317-003-00	CLIP,PIN	*	4					
45	V 411-260-012-00	WASHER /M12	*	4					
46	8595-609-270-00	PIN/REAR/LH COMP	*	1					
47	V 201-261-207-00	BOLT/M12X70	*	2					
48	V 411-260-012-00	WASHER /M12	*	2					
49	V 401-160-012-00	WASHER,SP/M12	*	2					
50	8595-609-280-00	PIN/REAR/RH COMP	*	1					
51	V 201-261-207-00	BOLT/M12X70	*	2					
52	V 411-260-012-00	WASHER /M12	*	2					
53	V 401-160-012-00	WASHER,SP/M12	*	2					

Numerical Index

8597-097-100-00

Part Code	Fig.Key	Part Code	Fig.Key	Part Code	Fig.Key
1342-402-006-00	7 12	8595-306-005-00	3 27	8654-101-232-00	10 9
1427-317-003-00	5 3	8595-306-006-00	3 26	8654-101-233-00	10 5
	6 20	8595-306-007-00	3 28		10 10
	6 23	8595-501-001-10	5 9	8654-202-016-00	2 2
	6 44	8595-505-002-00	5 2		2 5
	7 9	8595-505-051-30	5 10	8654-301-004-00	3 7
1434-211-004-00	2 3	8595-608-082-00	4 2		3 20
1560-601-028-00	4 3		6 5	8654-501-283-00	5 5
	6 6		6 9		6 28
	6 10	8595-608-820-00	6 8	8654-901-002-00	8 5
1593-101-012-00	6 25	8595-608-870-00	6 24	8655-611-051-00	9 14
1593-901-015-00	8 6	8595-609-021-00	6 1	8655-611-052-00	9 10
1594-221-001-00	3 4	8595-609-210-00	6 18	8657-101-501-00	10 1
	3 17	8595-609-220-00	6 21	8657-201-081-00	1 4
1608-206-240-00	7 6	8595-609-230-00	6 27	8657-201-082-00	1 11
1608-206-241-00	7 7	8595-609-260-00	6 35	8657-201-083-00	1 12
1642-410-001-00	9 11	8595-609-270-00	6 46	8657-201-084-00	1 23
1650-219-009-00	1 14	8595-609-280-00	6 50	8657-201-085-00	1 25
2149-602-012-00	4 11	8595-609-310-00	6 40	8657-201-086-00	1 26
	4 13	8595-609-320-00	6 41	8657-202-001-00	2 1
2500-901-014-30	8 4	8595-609-350-00	6 29		2 4
2500-901-027-00	8 1	8595-609-380-00	6 12	8657-301-004-00	3 1
3621-211-003-00	2 15	8595-609-390-00	6 15	8657-301-005-00	3 12
3650-380-220-10	7 10	8595-611-200-00	9 1	8657-301-007-00	3 9
3737-341-006-00	2 17	8595-611-210-00	9 2		3 22
3737-341-007-00	2 18	8595-611-220-00	9 6	8657-301-008-00	3 24
3746-111-011-00	2 6	8595-901-006-00	8 2	8657-301-009-00	3 15
3768-185-022-10	7 11	8595-901-007-00	8 3	8657-501-530-00	5 4
7955-201-026-00	1 10	8595-901-008-10	8 7	8657-501-540-10	5 1
7970-201-004-00	1 20	8597-201-051-00	1 29	8657-608-052-00	6 19
8593-014-200-10	2 11	8597-201-052-00	1 30		6 22
8595-101-411-00	10 2	8597-201-053-10	1 24	8657-608-053-10	6 43
8595-101-421-00	10 6	8597-202-500-00	2 9	8657-608-810-10	6 4
8595-101-422-00	10 7	8597-202-501-00	2 10	8657-610-051-00	7 8
8595-101-600-00	1 1	8597-301-002-00	1 35	8657-611-004-00	9 8
8595-203-003-00	2 20	8597-306-002-00	3 25	8657-611-230-00	9 7
8595-211-002-10	1 5	8597-402-510-10	4 1	A101-212-003-00	9 5
8595-211-004-20	1 16	8597-406-001-00	4 7	K182-002-002-00	7 3
8595-211-005-10	1 17	8597-406-200-20	4 5	K182-032-000-00	7 1
8595-211-006-30	1 21	8597-406-210-00	4 9	K182-032-001-00	7 2
8595-211-010-00	1 18	8597-407-520-10	4 10	K182-032-002-00	7 4
8595-211-021-00	1 19	8597-407-530-10	4 12	K182-032-003-00	7 5
8595-211-024-00	1 27	8654-101-230-00	10 3	V201-260-808-00	1 8
8595-211-200-20	1 15		10 8	V201-261-207-00	6 47
8595-301-031-00	3 3	8654-101-232-00	10 4		6 51

Numerical Index

8597-097-100-00

Part Code	Fig.Key	Part Code	Fig.Key	Part Code	Fig.Key
V201-361-203-00	6 2	V500-162-502-50	9 13		
V201-361-203-50	6 31	V523-100-801-80	1 6		
	6 36	V580-140-402-50	9 9		
V201-361-204-50	6 32	V580-140-504-00	4 4		
	6 37		5 6		
V201-361-214-00	9 3		6 7		
V203-361-003-50	6 13		6 11		
	6 16	V580-140-604-00	1 2		
V211-260-803-00	1 7	V600-110-600-50	1 22		
V211-261-002-50	3 2	V600-110-690-80	3 5		
	3 13		3 18		
V211-561-003-00	6 33	V704-140-016-00	2 13		
	6 38	V704-140-017-00	2 12		
V211-661-002-00	1 31	V705-140-052-00	3 6		
V304-260-008-00	2 19		3 19		
V304-260-010-00	1 32	V707-140-055-00	1 28		
	3 16	V707-140-062-00	1 13		
V304-260-012-00	6 26		3 10		
V304-260-016-00	6 42		3 23		
V304-460-016-00	2 8	V744-135-520-80	3 8		
V360-260-006-00	9 15		3 21		
V360-260-012-00	5 11	V760-150-000-00	2 16		
V362-260-008-00	4 14		3 11		
V363-260-008-00	4 6		3 14		
	4 8		5 8		
V401-160-008-00	1 9	V762-150-000-00	6 30		
V401-160-010-00	1 33				
	6 14				
	6 17				
V401-160-012-00	6 3				
	6 34				
	6 39				
	6 49				
	6 53				
	9 4				
V401-160-016-00	2 7				
V401-160-020-00	3 29				
V411-260-010-00	1 36				
V411-260-012-00	6 45				
	6 48				
	6 52				
	9 12				
V411-260-014-00	1 34				
V411-260-016-00	2 14				
V411-260-022-00	5 7				

Alphabetical Index

8597-097-100-00

Description	Fig.Key	Description	Fig.Key	Description	Fig.Key
ADAPTER (90°) ORIFICE	7 6	BUSH/22X25X25	6 28	LABEL/WARNING/HOT	8 3
ADAPTER (90° /PUMP)	7 11	CAP/32	4 11	LINK/REAR ASSY	6 27
ARM/FRONT COMP	6 4	CAP/32	4 13	METAL/CENTER	3 12
ARM/MID/LH COMP	6 18	CASE/LOWER	1 5	METAL/SIDE	3 1
ARM/MID/RH COMP	6 21	CASE/UPPER	1 4	NIPPLE, GREASE	2 16
ARM/TENSION ASSY	2 9	CLIP, PIN	5 3	NIPPLE, GREASE	3 11
AS YOKE ASSY	10 1	CLIP, PIN	6 20	NIPPLE, GREASE	3 14
BAND, WIRE/250	7 12	CLIP, PIN	6 23	NIPPLE, GREASE	5 8
BEARING	3 5	CLIP, PIN	6 44	NIPPLE, GREASE/B-M6F	6 30
BEARING	3 18	CLIP, PIN	7 9	NUT	1 32
BEARING, RB/6005	1 22	COLLAR/13X17X33	9 11	NUT	2 19
BEARING/BALL	1 14	COLLAR/26X36X3	2 3	NUT	3 16
BEARING/BALL	1 23	COLLAR/BRADE	3 9	NUT/ADJUST	9 10
BEARING/BALL	1 25	COLLAR/BRADE	3 22	NUT/GAUGE COMP	9 7
BEARING/BALL	1 26	COLLER/26X34X15	3 24	NUT/M12	6 26
BEARING/BALL 6205SH2	3 4	COVER/BELT/LH COMP	4 10	NUT/M16	2 8
BEARING/BALL 6205SH2	3 17	COVER/BELT/RH COMP	4 12	NUT/M16	6 42
BELT/VB092	2 20	CYLINDER ASSY	7 1	NUT/M20X1.5	3 28
BLADE/50X429/C	3 25	DECK/MOWER/48/M COMP	4 1	NUT/M6	9 15
BLOT/M10X25	1 35	DUST/SEAL	7 5	NUT/WASHER	4 6
BOLT	6 13	FITTING YOKE	10 7	NUT/WASHER	4 8
BOLT	6 16	FORK/A COMP	6 40	NUT/WASHER	4 14
BOLT	9 3	FORK/B COMP	6 41	NUT/WASHER	5 11
BOLT(S) M10X25	3 2	FORK/WHEEL/R COMP	5 1	ORIFICEBOLT/2.2	7 7
BOLT(S) M10X25	3 13	GEAR/BEVEL/21-2 SET	1 15	PIN	1 6
BOLT, SEMS	1 7	GEAR/SPUR/21	1 24	PIN, SPLIT/2.5X25	9 13
BOLT/M 8X80	1 8	GEAR/SPUR/34	1 21	PIN, SPRING/4 X25	9 9
BOLT/M10X20	1 31	GREASENIPPLE	10 4	PIN, SPRING/5 X40 W	4 4
BOLT/M10X30	6 33	GREASENIPPLE	10 9	PIN, SPRING/5 X40 W	5 6
BOLT/M10X30	6 38	GUIDE COMP	4 5	PIN, SPRING/5 X40 W	6 7
BOLT/M12X30	6 2	HIGHTADJUST/316 SET	9 1	PIN, SPRING/5 X40 W	6 11
BOLT/M12X35	6 31	HITCH/ARM COMP	6 8	PIN, SPRING/6 X40 W	1 2
BOLT/M12X35	6 36	HOSE/HYDRO/900 ASSY	7 10	PIN/08X44	5 2
BOLT/M12X45	6 32	JOINT/UNIVERSAL SET	1 1	PIN/12X117	5 10
BOLT/M12X45	6 37	JOURNALCROSSE ASSY	10 3	PIN/12X42	6 43
BOLT/M12X70	6 47	JOURNALCROSSE ASSY	10 8	PIN/15X88	7 8
BOLT/M12X70	6 51	KEY/06X06X28	2 2	PIN/16X43	6 19
BRACKET/FRONT	6 1	KEY/06X06X28	2 5	PIN/16X43	6 22
BRACKET/MID/LH COMP	6 12	KNOB/10X33	9 8	PIN/16X96	4 2
BRACKET/MID/RH COMP	6 15	LABEL/CE	8 1	PIN/16X96	6 5
BRACKET/REAR/LH COMP	6 29	LABEL/DANGER	8 4	PIN/16X96	6 9
BRACKET/REAR/RH COMP	6 35	LABEL/GAUGEWHEEL	8 7	PIN/REAR/LH COMP	6 46
BUSH/14X16X10	9 5	LABEL/MAINTENANCE	8 6	PIN/REAR/RH COMP	6 50
BUSH/16X18X15	2 10	LABEL/PTO	8 5	PIPE/GREASE	3 15
BUSH/22X25X25	5 5	LABEL/WARNING/BELT	8 2	PISTON	7 2

Alphabetical Index

8597-097-100-00

Description	Fig.Key	Description	Fig.Key	Description	Fig.Key
PLATE/GAUGE	9 14	SURCLIP/HOLE	10 10		
PLATE/I/25X64	4 9	WASHER	2 6		
PLATE/L/130X109	1 29	WASHER	2 15		
PLATE/L/65XX55	4 7	WASHER / M16	2 14		
PLATE/STAY	1 30	WASHER /M12	6 45		
PLUG, DRAIN (1/4)	1 10	WASHER /M12	6 48		
PULLEY COMP	2 11	WASHER /M12	6 52		
PULLEY/VB125	2 1	WASHER /M12	9 12		
PULLEY/VB125	2 4	WASHER, PL/M14	1 34		
RING, SNAP/16 C	2 13	WASHER, PL/M22	5 7		
RING, SNAP/17 C	2 12	WASHER, SP/M 8	1 9		
RING, SNAP/52 C	3 6	WASHER, SP/M10	1 33		
RING, SNAP/52 C	3 19	WASHER, SP/M10	6 14		
RING/SNAP	1 13	WASHER, SP/M10	6 17		
RING/SNAP	1 28	WASHER, SP/M12	6 3		
RING/SNAP	3 10	WASHER, SP/M12	6 34		
RING/SNAP	3 23	WASHER, SP/M12	6 39		
ROD PACKING	7 4	WASHER, SP/M12	6 49		
ROD, CHAIN TENSION	2 18	WASHER, SP/M12	6 53		
SEAL, OIL/TC35528	3 8	WASHER, SP/M12	9 4		
SEAL, OIL/TC35528	3 21	WASHER, SP/M16	2 7		
SEAL/OIL	1 12	WASHER, SP/M20	3 29		
SEAL/OIL	1 27	WASHER/20X60X06	3 27		
SEAL/OIL	3 7	WASHER/M10	1 36		
SEAL/OIL	3 20	WHEEL/GAUGE ASSY	5 4		
SHAFT/ADJUST COMP	9 6	WHEEL/GAUGE/FRONT	5 9		
SHAFT/BRADE	3 3				
SHAFT/COUNTER	1 16				
SHAFT/INPUT	1 11				
SHAFTYOKE ASSY	10 6				
SHIM, A	1 20				
SHIM/0.1	1 19				
SHIM/0.2	1 17				
SHIM/0.2	1 18				
SHIM/1.2	3 26				
SPLINEYOKE	10 2				
SPRING, CHAIN TENSION	2 17				
SPRING/HC042	4 3				
SPRING/HC042	6 6				
SPRING/HC042	6 10				
STAY/GAUGE COMP	9 2				
STOPPER	6 25				
STOPPER COMP	6 24				
STOPPER, PISTON	7 3				
SURCLIP/HOLE	10 5				



**Yvan Béal - 21, av. de l'Agriculture - B.P. 16
Z.I. du Brézet - 63014 Clermont-Ferrand Cedex 2
Tél : 04 73 91 93 51 - Télécopie : 04 73 90 23 11
www.yvanbeal.fr - E-mail : info@yvanbeal.fr
R.C.S. Clermont-Fd B 304 973 886 - S.A.S. au capital de 612 000 €**