



PIECES DETACHEES

Plateau de coupe

T10480

T10540

T10600

SSM48-TXG23E4

SSM54-TXG23E4

SSM60-TXG23E4



Yvon Béal 21, Av. de l'Agriculture - B.P. 16
Z.I. du Breret 63014 Clermont-Ferrand Cedex 2
Tél : 04 73 91 93 51 Télécopie : 04 73 90 23 11
www.yvonbeal.fr Email : info@yvonbeal.fr
R.C.N. 304 873 880 - SIREN 304 873 880

8595-097-1100-0

03-000243-050309

Directions for use of Parts Catalogue

1. Applicable model of machines

All component and option parts used for SSM48/SSM54/SSM60 Mower are listed in this parts catalogue.

- NOTES: SSM48-TXG23... FOR TXG23
 SSM54-TXG23... FOR TXG23
 SSM60-TXG23... FOR TXG23

2. Explanation for head paragraph

KEY	PART CODE	DESCRIPTION	S P C	TYPE OF MODEL						I T C	C O L	G R P	REMARKS
				SSM48M	SSM48F	SSM48G	SRM48M	SRM48F	SRM48G				
1	0595-211-001-20	CASE/UPPER	*	1									
1A	0657-201-001-00	CASE/UPPER	T	1			1						
2	0595-211-002-10	CASE/LOWER	*	1									
3	V523-100-801-00	PIN	*	2			2						
4	V211-260-803-00	BOLT, SEMS	*	6			6						
			*	2									
			T	2			2						
			R	2			2						
			*	1									

- ① KEY shows the location of parts diagramed in the illustration.
- ② Parts numbers begin with `V` and `W` are standard parts of the market.
- ③ `LH` and `RH` on the parts name are described against the moving direction of the machine or are described on the condition how to install parts on the machines.
- ④ SPC : The following symbol classifies parts to be used for machines.
 - * means standard parts.
 - T shows that the parts can be installed as optional parts.
 - R shows that the parts can be used as applicable parts to replace originally equipped parts.

- ⑤ Upper column : QTY shows the number of parts to be used for one unit of machine.
 `M` is indicated for parts supplied by a meter long.
 `l` is indicated for parts supplied by liter.
 `AR` is indicated for parts need to be adjusted or regulated.
 Lower column : serial number
 -229 means serial number up to 229.
 230- means serial number 230 and after.
- ⑥ ITC : Interchangeability
 `1`...OLD ← NEW
 New parts can be used in place of the old parts.
 `2`...OLD → NEW
 Old parts can be used in place of the new parts.
 `3`...OLD →← NEW
 Old parts and new parts can not be replaced each other.
- ⑦ COL : Color code
 Color is signified with color code number for colored parts.
 Please see the color list shown in the next page.
- ⑧ GRP : Parts shown in this column can be replaced by SET parts.
 Example : Parts marked Ⓐ can be replaced by parts marked Ⓑ, and Ⓓ for
 Ⓒ, so the rest follow in the same alphabetical order.
- ⑨ Remarks
 * Other maker's part code number is shown in this column.
 * When Fig. No. is shown in the Remark column of SET parts or ASSY parts,
 each of their component parts are listed in said Fig. No.

3. Color :

The following colors are used color parts.

COLOR CODE	COLOR	SPRAY TYPE CODE NUMBER	PAINTS 4K DRUM	PAINTS 16K DRUM
7 F	MIRROR BLACK	1300-954-001-10	1300-954-003-00	1300-954-004-00

NOTE : Color code is signified only for the parts assigned by the maker as color parts.

4. Serial Numbers :

For chassies serial number is shown on the LABEL.

Please see



5. Parts Order

- 1) Parts numbers listed in the parts catalogue are all registered in "ISEKI on-line computer".
 - 2) When you order parts, please make sure of correct numbers.
 - 3) When substitute parts is available, the part number ordered will be automatically turned to a new part number.
 - 4) Please be sure to use "ISEKI GENUINE PARTS".
- Any other similar parts other than ISEKI parts when used may cause a trouble that makes us unable to repair or guarantee the warrant.

*** Structure Table of Model ***

M O D E L	S	S	S																	
	S	S	S																	
	M	M	M	M	E															
	4	4	5	4	6	4														
	8	4	0																	
	T	T	T																	
	X	X	X																	
	G	G	G																	
	2	2	2																	
	3	3	3																	
FIG.																				
1	*	*	*																	
2				*																
3	*																			
4	*																			
5			*																	
6				*																
7				*																
8	*	*																		
9		*	*																	
10	*																			
11				*																
12	*																			
13			*	*																
14	*	*	*	*																
15	*	*	*	*																
16	*	*	*	*																

www.emc-motoculture.com

FIG.9, 10, 11

FIG.1~3

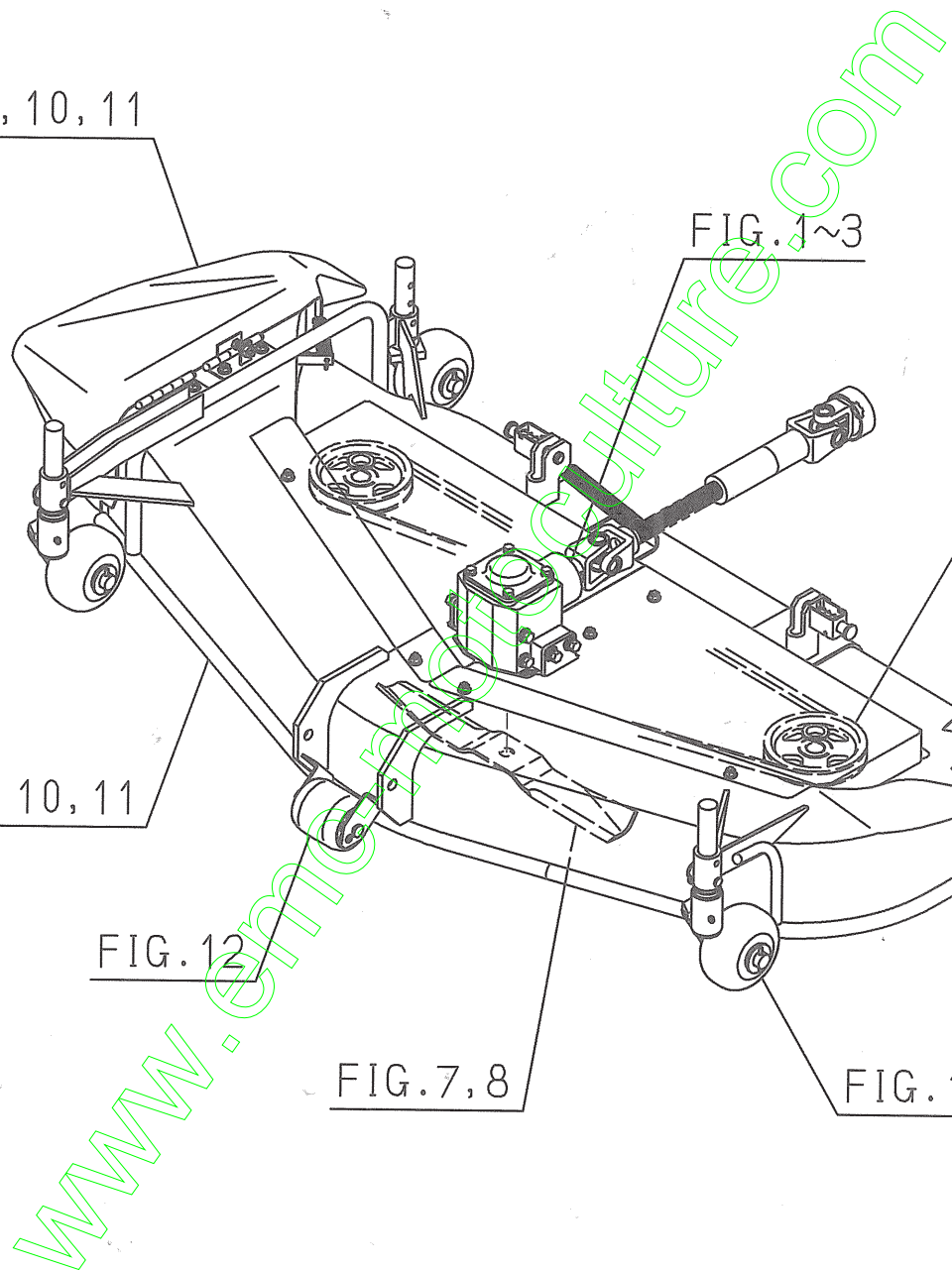
FIG.4~6

FIG.9, 10, 11

FIG.12

FIG.7, 8

FIG.12



Contents

SSM48,54,60-TXG23

UNIVERSAL JOINT,

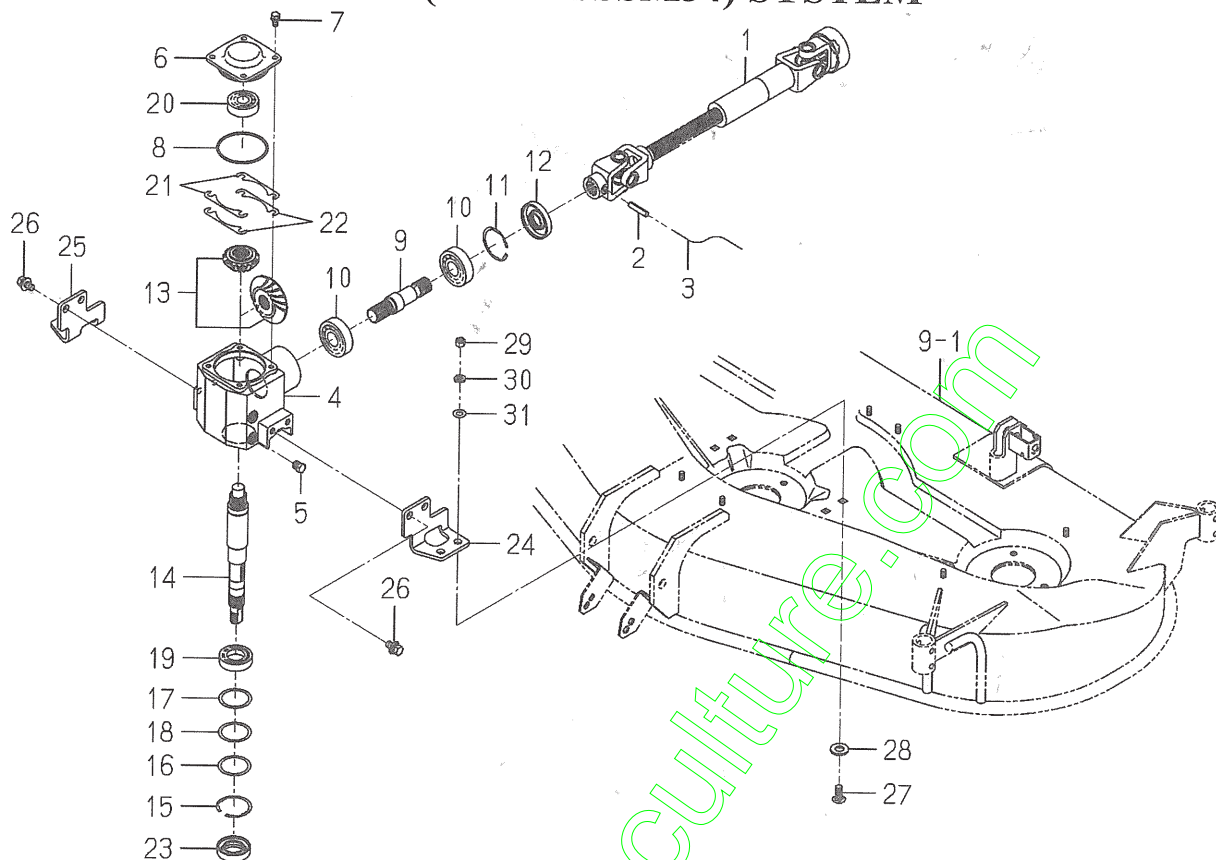
CASE (BEVEL/SSM54) SYSTEM.....	Fig. 1
CASE (BEVEL) SYSTEM (SSM60).....	Fig. 2
CASE (BEVEL) SYSTEM (SSM48).....	Fig. 3
PULLEY,BELT SYSTEM (SSM48).....	Fig. 4
PULLEY,BELT SYSTEM (SSM54).....	Fig. 5
PULLEY,BELT SYSTEM (SSM60).....	Fig. 6
METAL,BLADE SYSTEM (SSM60).....	Fig. 7
METAL,BLADE SYSTEM (SSM48,54).....	Fig. 8
MOWER DECK,COVER SYSTEM (SSM54).....	Fig. 9
MOWER DECK,COVER SYSTEM (SSM48).....	Fig. 10
MOWER DECK,COVER SYSTEM (SSM60).....	Fig. 11
GAUGE WHEEL SYSTEM (SSM48).....	Fig. 12
GAUGE WHEEL SYSTEM (SSM54,60).....	Fig. 13
LINK SYSTEM.....	Fig. 14
LABEL.....	Fig. 15

COMPONENT PARTS

COMPONENT PARTS

FOR 8662-101-210-00 ON Fig.1.....	Fig. 16
-----------------------------------	---------

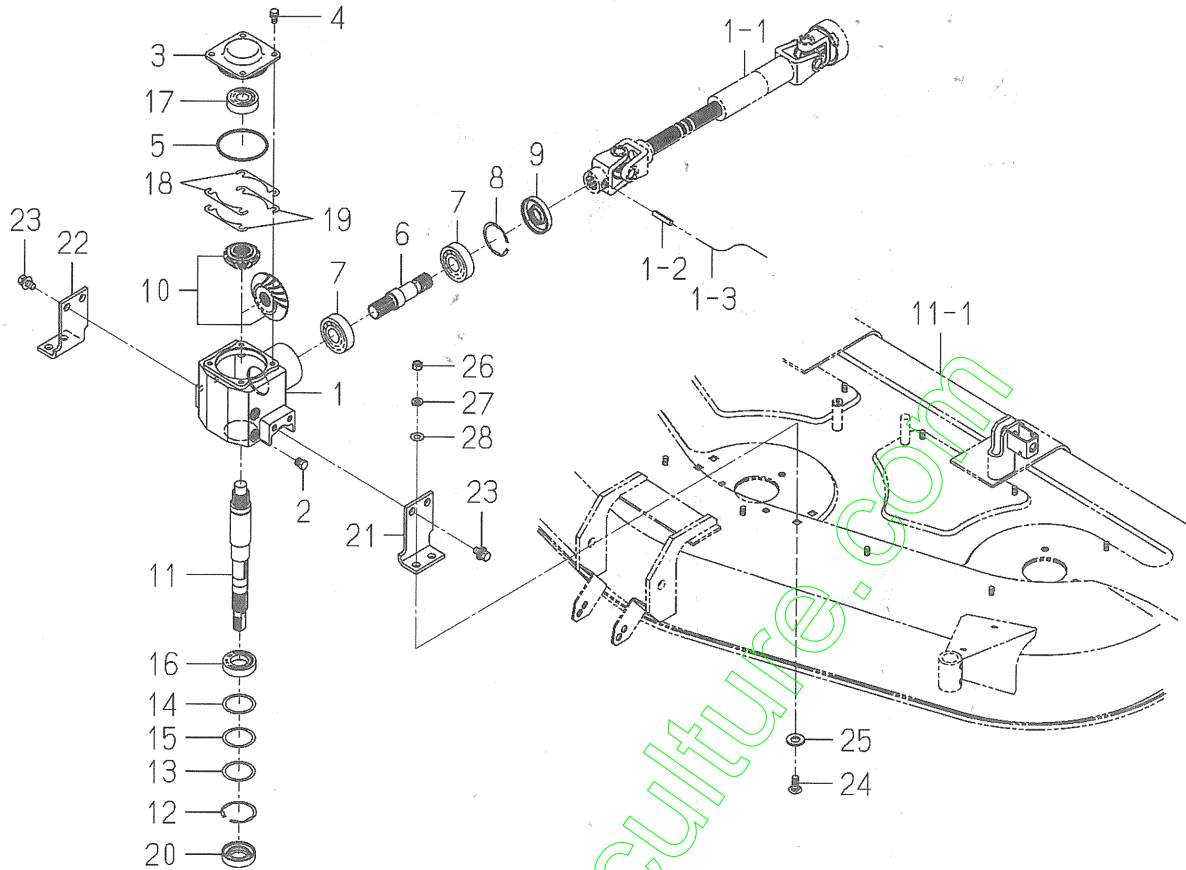
FIG. 1 UNIVERSAL JOINT, CASE (BEVEL/SSM54) SYSTEM



8662-101 -0100,8657-201C-0100

KEY	PART CODE	DESCRIPTION	S P C	TYPE OF MODEL			I T C	C O L	G R P	REMARKS
				SSM48 TXG23	SSM54 TXG23	SSM60 TXG23				
1	8662-101-210-00	JOINT/UNIVERSAL SET	*	1	1	1				FIG 016
2	V580-140-804-00	PIN,SPRING/8 X40 W	*	1	1	1				
3		WIRE	*	1	1	1				
4	8595-201-011-00	CASE/BEVEL	*		1					
5	7955-201-026-00	PLUG,DRAIN (1/4)	*		2					
6	8595-201-012-00	COVER/CASE	*		1					
7	V211-260-801-60	BOLT,SEMS (S) M8X16	*		4					
8	V721-103-108-00	O-RING/G80	*		1					
9	8595-201-013-00	SHAFT/INPUT	*		1					
10	1594-218-001-00	BEARING/BALL 6305SH2	*		2					
11	V707-140-062-00	RING/SNAP	*		1					
12	8595-201-025-00	SEAL/OIL	*		1					
13	8657-201-710-00	GEAR/BEVEL/27-1 SET	*		1					
14	8657-201-074-00	SHAFT/OUTPUT	*		1					
15	V707-140-055-00	RING/SNAP	*		1					
16	8595-201-015-00	WASHER/45X55X01	*		1					
17	8595-201-016-00	SHIM/0.1	*		1					
18	8595-201-017-00	SHIM/0.2	*		1					
19	V600-110-600-60	BEARING,RB 6006	*		1					
20	V600-110-630-40	BEARING,RB/6304	*		1					
21	8595-201-021-00	SHIM/0.1	*		1					
22	8595-201-022-00	SHIM/0.2	*		1					
23	V744-130-551-20	SEAL,OIL/TC305512	*		1					
24	8657-201-072-00	BRACKET/CASE/LH	*		1					
25	8657-201-073-00	BRACKET/CASE/RH	*		1					
26	V211-661-002-00	BOLT/M10X20	*		4					
27	8597-301-002-00	BLOT/M10X25	*		4					
28	V411-260-014-00	WASHER,PL/M14	*		4					
29	V304-260-010-00	NUT	*		4					
30	V401-160-010-00	WASHER,SP/M10	*		4					

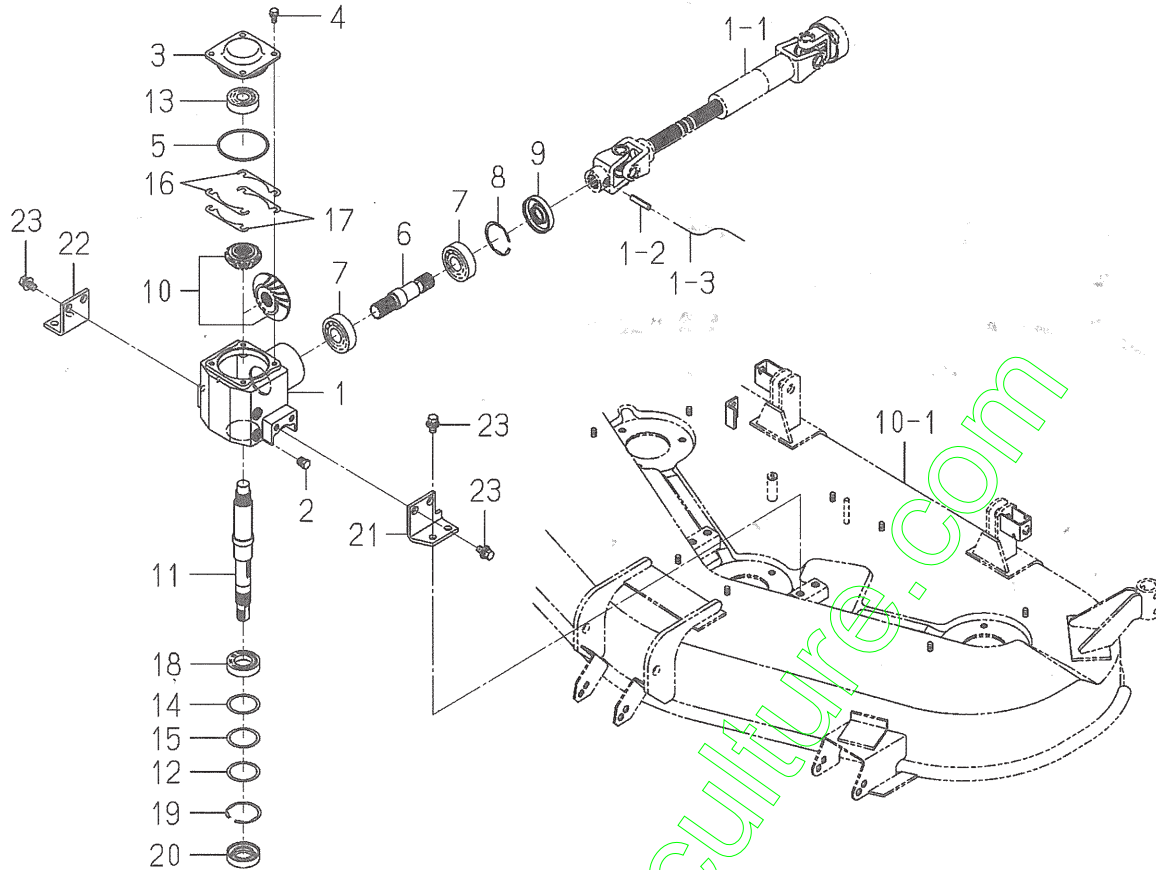
FIG. 2 CASE (BEVEL) SYSTEM (SSM60)



8654-201E-0100

KEY	PART CODE	DESCRIPTION	S P C	TYPE OF MODEL			I T C	C O L	G R P	REMARKS
				SSM48 TXG23	SSM54 TXG23	SSM60 TXG23				
1	8595-201-011-00	CASE/BEVEL	*			1				
2	7955-201-026-00	PLUG,DRAIN (1/4)	*			2				
3	8595-201-012-00	COVER/CASE	*			1				
4	V211-260-801-60	BOLT,SEMS (S) M8X16	*			4				
5	V721-103-108-00	O-RING/G80	*			1				
6	8595-201-013-00	SHAFT/INPUT	*			1				
7	1594-218-001-00	BEARING/BALL 6305SH2	*			2				
8	V707-140-062-00	RING/SNAP	*			1				
9	8595-201-025-00	SEAL/OIL	*			1				
10	8595-201-250-10	GEAR/BEVEL/25-1 SET	*			1				
11	8654-201-072-10	SHAFT/OUTPUT	*			1				
12	V707-140-055-00	RING/SNAP	*			1				
13	8595-201-015-00	WASHER/45X55X01	*			1				
14	8595-201-016-00	SHIM/0.1	*			1				
15	8595-201-017-00	SHIM/0.2	*			1				
16	V600-110-600-60	BEARING,RB 6006	*			1				
17	V600-110-630-40	BEARING,RB/6304	*			1				
18	8595-201-021-00	SHIM/0.1	*			1				
19	8595-201-022-00	SHIM/0.2	*			1				
20	V744-130-551-20	SEAL,OIL/TC305512	*			1				
21	8654-201-042-00	PLATE/L/75X106	*			1				
22	8654-201-043-00	PLATE/L/75X106	*			1				
23	V211-661-002-00	BOLT/M10X20	*			4				
24	8597-301-002-00	BLOT/M10X25	*			4				
25	V411-260-014-00	WASHER,PL/M14	*			4				
26	V304-260-010-00	NUT	*			4				
27	V401-160-010-00	WASHER,SP/M10	*			4				
28	V411-260-010-00	WASHER/M10	*			4				

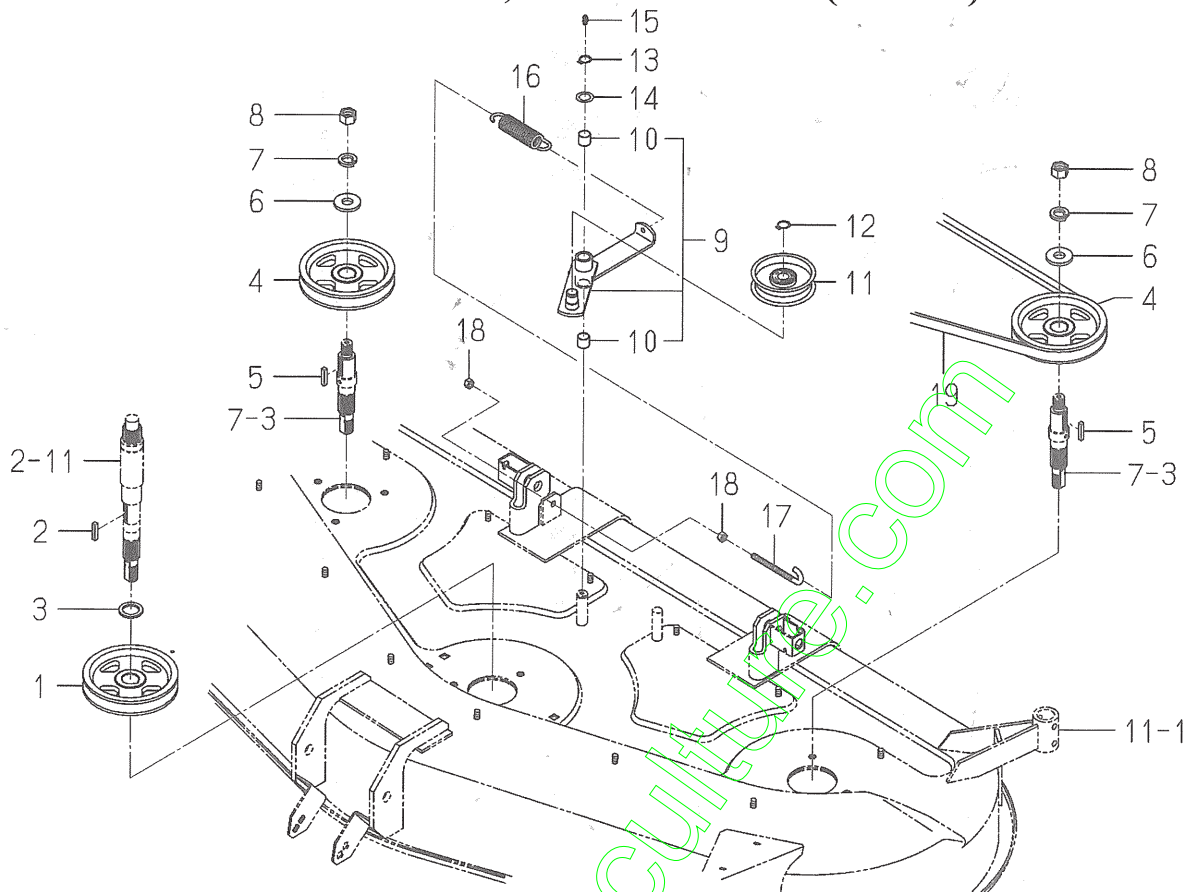
FIG. 3 CASE (BEVEL) SYSTEM (SSM48)



8595-201H-0100

KEY	PART CODE	DESCRIPTION	S P C	TYPE OF MODEL			I T C	C O L	G R P	REMARKS
				SSM48 TXG23	SSM54 TXG23	SSM60 TXG23				
1	8595-201-011-00	CASE/BEVEL	*	1						
2	7955-201-026-00	PLUG,DRAIN (1/4)	*	2						
3	8595-201-012-00	COVER/CASE	*	1						
4	V211-260-801-60	BOLT,SEMS (S) M8X16	*	4						
5	V721-103-108-00	O-RING/G80	*	1						
6	8595-201-013-00	SHAFT/INPUT	*	1						
7	1594-218-001-00	BEARING/BALL 6305SH2	*	2						
8	V707-140-062-00	RING/SNAP	*	1						
9	8595-201-025-00	SEAL/OIL	*	1						
10	8595-201-410-00	GEAR/BEVEL/28-1 SET	*	1						
11	8595-201-041-00	SHAFT/OUTPUT	*	1						
12	8595-201-015-00	WASHER/45X55X01	*	1						
13	V600-110-630-40	BEARING,RB/6304	*	1						
14	8595-201-016-00	SHIM/0.1	*	1						
15	8595-201-017-00	SHIM/0.2	*	1						
16	8595-201-021-00	SHIM/0.1	*	1						
17	8595-201-022-00	SHIM/0.2	*	1						
18	V600-110-600-60	BEARING,RB 6006	*	1						
19	V707-140-055-00	RING/SNAP	*	1						
20	V744-130-551-20	SEAL,OIL/TC305512	*	1						
21	8595-201-023-00	PLATE/L/75X65	*	1						
22	8595-201-024-00	PLATE/L/60X65	*	1						
23	V211-661-002-00	BOLT/M10X20	*	8						

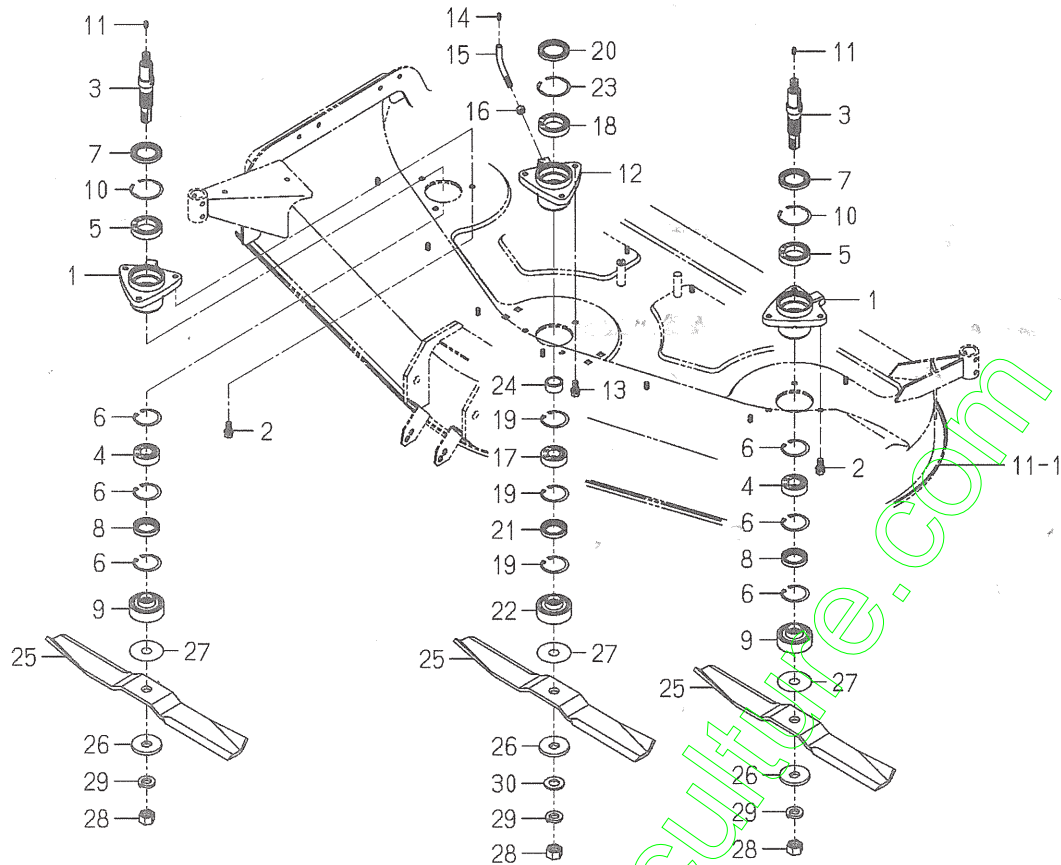
FIG. 6 PULLEY,BELT SYSTEM (SSM60)



8654-202B-0100,8654-203B-0100

KEY	PART CODE	DESCRIPTION	S P C	TYPE OF MODEL			I T C	C O L	G R P	REMARKS
				SSM48 TXG23	SSM54 TXG23	SSM60 TXG23				
1	8657-202-003-10	PULLEY/VB137	*			1				
2	8654-202-016-00	KEY/06X06X28	*			1				
3	1434-211-004-00	COLLAR/26X36X3	*			1				
4	8657-202-003-10	PULLEY/VB137	*			2				
5	8654-202-016-00	KEY/06X06X28	*			2				
6	3746-111-011-00	WASHER	*			2				
7	V401-160-016-00	WASHER,SP/M16	*			2				
8	V304-460-016-00	NUT/M16	*			2				
9	8654-203-810-00	ARM/TENSION ASSY	*			1				
10	8597-202-501-00	BUSH/16X18X15	*			2				
11	8593-014-200-10	PULLEY COMP	*			1				
12	V704-140-017-00	RING,SNAP/17 C	*			1				
13	V704-140-016-00	RING,SNAP/16 C	*			1				
14	3621-211-003-00	WASHER	*			1				
15	V760-150-000-00	NIPPLE,GREASE	*			1				
16	3737-341-006-00	SPRING,CHAIN TENSION	*			1				
17	3737-341-007-00	ROD,CHAIN TENSION	*			1				
18	V304-260-008-00	NUT	*			2				
19	8654-203-081-00	BELT/VB113	*			1				

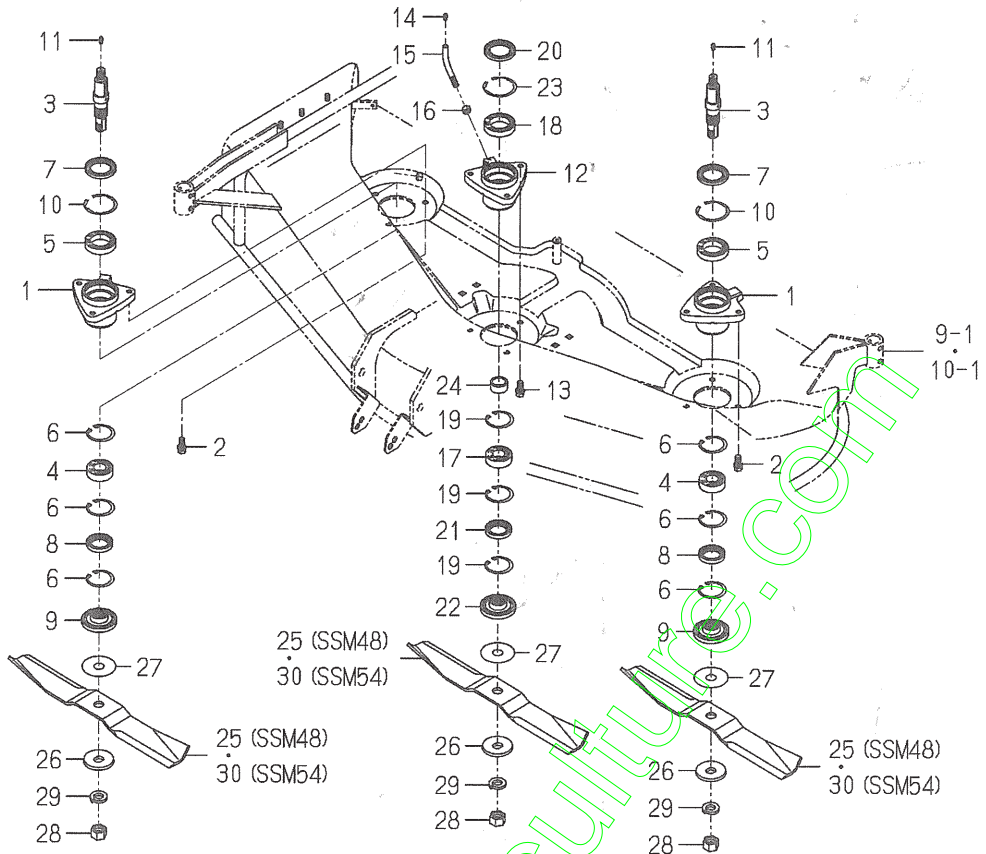
FIG. 7 METAL, BLADE SYSTEM (SSM60)



8654-301A-0100,8654-306A-0100

KEY	PART CODE	DESCRIPTION	S P C	TYPE OF MODEL			I T C	C O L	G R P	REMARKS
				SSM48 TXG23	SSM54 TXG23	SSM60 TXG23				
1	8657-301-004-00	METAL/SIDE	*			2				
2	V211-261-002-50	BOLT(S) M10X25	*			6				
3	8654-301-085-00	SHAFT/SIDE	*			2				
4	1594-221-001-00	BEARING/BALL 6205SH2	*			2				
5	V600-110-690-80	BEARING	*			2				
6	V705-140-052-00	RING,SNAP/52 C	*			6				
7	8654-301-004-00	SEAL/OIL	*			2				
8	V744-135-520-80	SEAL,OIL/TC35528	*			2				
9	8658-301-001-00	COLLAR/BRADE	*			2				
10	V707-140-062-00	RING/SNAP	*			2				
11	V760-150-000-00	NIPPLE,GREASE	*			2				
12	8657-301-005-00	METAL/CENTER	*			1				
13	V211-261-002-50	BOLT(S) M10X25	*			3				
14	V760-150-000-00	NIPPLE,GREASE	*			1				
15	8657-301-009-00	PIPE/GREASE	*			1				
16	V304-260-010-00	NUT	*			1				
17	1594-221-001-00	BEARING/BALL 6205SH2	*			1				
18	V600-110-690-80	BEARING	*			1				
19	V705-140-052-00	RING,SNAP/52 C	*			3				
20	8654-301-004-00	SEAL/OIL	*			1				
21	V744-135-520-80	SEAL,OIL/TC35528	*			1				
22	8658-301-001-00	COLLAR/BRADE	*			1				
23	V707-140-062-00	RING/SNAP	*			1				
24	8657-301-008-00	COLLER/26X34X15	*			1				
25	8654-306-006-00	BLADE/60X528/C	*			3				
26	8595-306-005-00	WASHER/20X60X06	*			3				
27	8595-306-006-00	SHIM/1.2	*			3				
28	8595-306-007-00	NUT/M20X1.5	*			3				
29	V401-160-020-00	WASHER,SP/M20	*			3				
30	V411-260-020-00	WASHER/M20	*			1				

FIG. 8 METAL, BLADE SYSTEM (SSM48,54)



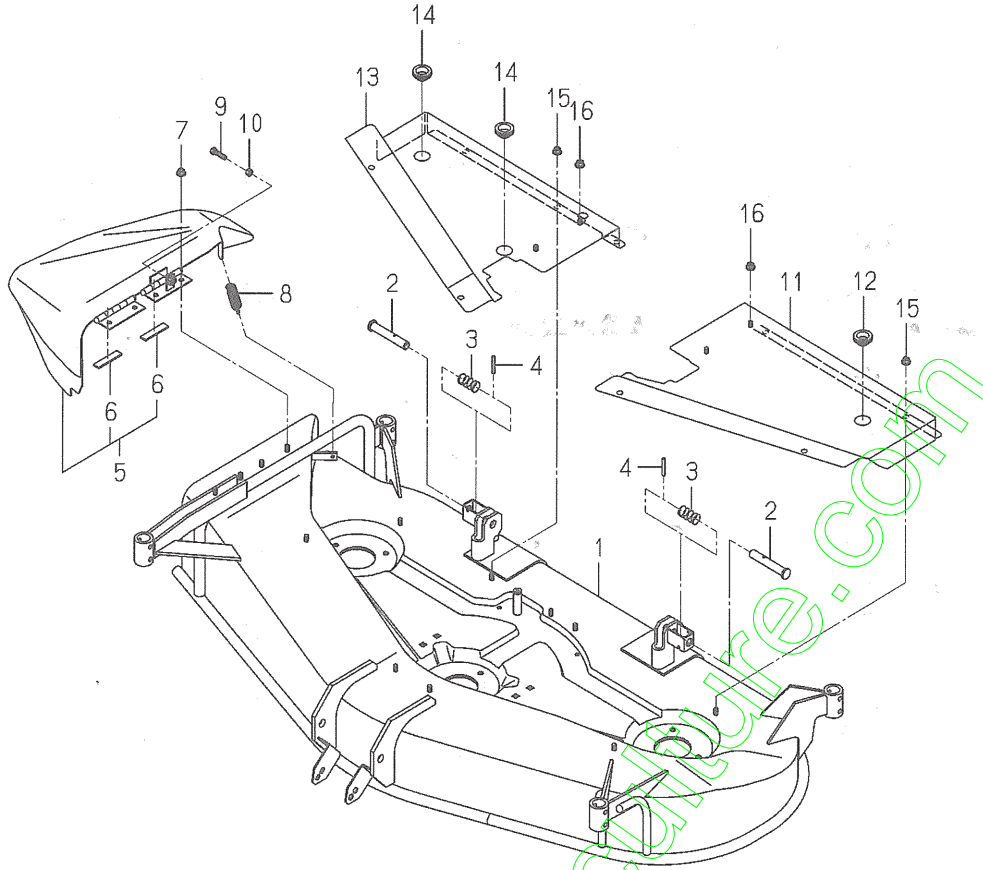
8595-301D-0100,8595-306C-0100,8657-306C-0100

KEY	PART CODE	DESCRIPTION	S P C	TYPE OF MODEL			I T C	C O L	G R P	REMARKS
				SSM48 TXG23	SSM54 TXG23	SSM60 TXG23				
1	8657-301-004-00	METAL/SIDE	*	2	2					
2	V211-261-002-50	BOLT(S) M10X25	*	6	6					
3	8595-301-031-00	SHAFT/BRADE	*	2	2					
4	1594-221-001-00	BEARING/BALL 6205SH2	*	2	2					
5	V600-110-690-80	BEARING	*	2	2					
6	V705-140-052-00	RING,SNAP/52 C	*	6	6					
7	8654-301-004-00	SEAL/OIL	*	2	2					
8	V744-135-520-80	SEAL,OIL/TC35528	*	2	2					
9	8657-301-007-00	COLLAR/BRADE	*	2	2					
10	V707-140-062-00	RING/SNAP	*	2	2					
11	V760-150-000-00	NIPPLE,GREASE	*	2	2					
12	8657-301-005-00	METAL/CENTER	*	1	1					
13	V211-261-002-50	BOLT(S) M10X25	*	3	3					
14	V760-150-000-00	NIPPLE,GREASE	*	1	1					
15	8657-301-009-00	PIPE/GREASE	*	1	1					
16	V304-260-010-00	NUT	*	1	1					
17	1594-221-001-00	BEARING/BALL 6205SH2	*	1	1					
18	V600-110-690-80	BEARING	*	1	1					
19	V705-140-052-00	RING,SNAP/52 C	*	3	3					
20	8654-301-004-00	SEAL/OIL	*	1	1					
21	V744-135-520-80	SEAL,OIL/TC35528	*	1	1					
22	8657-301-007-00	COLLAR/BRADE	*	1	1					
23	V707-140-062-00	RING/SNAP	*	1	1					
24	8657-301-008-00	COLLER/26X34X15	*	1	1					
25	8595-306-055-00	BLADE/50X428/E	*	3						
26	8595-306-005-00	WASHER/20X60X06	*	3	3					
27	8595-306-006-00	SHIM/1.2	*	3	3					
28	8595-306-007-00	NUT/M20X1.5	*	3	3					
29	V401-160-020-00	WASHER,SP/M20	*	3	3					
30	8657-306-005-00	BLADE/60X472/D	*		3					

48

54

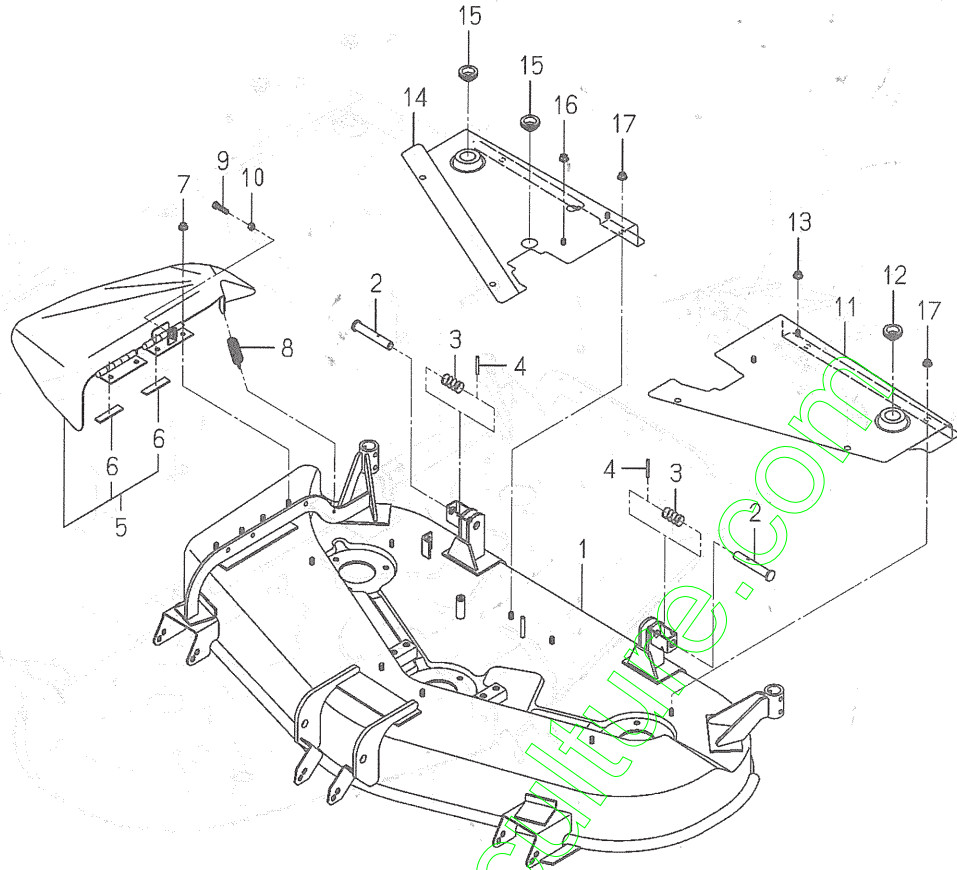
FIG. 9 MOWER DECK,COVER SYSTEM (SSM54)



8657-402F-0100,8657-406 -0100,8657-407E-0100

KEY	PART CODE	DESCRIPTION	S P C	TYPE OF MODEL			I T C	C O L	G R P	REMARKS
				SSM48 TXG23	SSM54 TXG23	SSM60 TXG23				
1	8657-402-750-00	DECK/MOWER/54/TXG	*		1			7F		
2	8595-608-082-00	PIN/16X96	*		2					
3	1560-601-028-00	SPRING/HC042	*		2					
4	V580-140-504-00	PIN,SPRING/5 X40 W	*		2					
5	8657-406-210-00	COVER/DISCHARGE COMP	*		1			7F		
6	P115-810-011-00	PLATE/03X15X65	*		2					
7	V363-260-008-00	NUT/WASHER	*		4					
8	3768-112-001-00	SPRING,CLUTCH RETURN	*		1					
9	V201-260-803-00	BOLT/M 8X30	*		1					
10	V304-260-008-00	NUT	*		1					
11	8657-407-220-01	COVER/BELT/LH/F COMP	*		1			7F		
12	2149-602-012-00	CAP/32	*		1					
13	8657-407-210-01	COVER/BELT/RH/F COMP	*		1			7F		
14	2149-602-012-00	CAP/32	*		2					
15	V362-260-008-00	NUT/WASHER	*		9					
16	V362-260-008-00	NUT/WASHER	*		4					

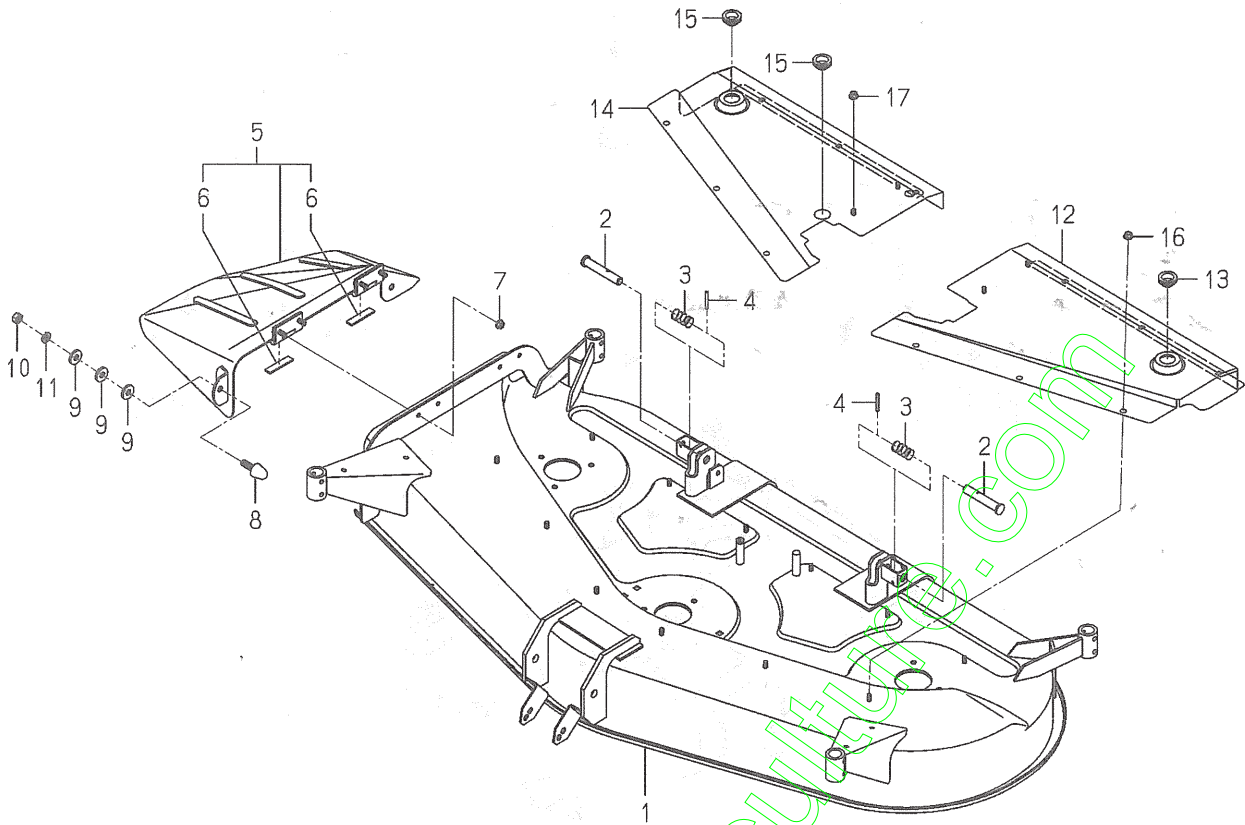
FIG. 10 MOWER DECK, COVER SYSTEM (SSM48)



8595-402G-0100,8595-406-0100,8595-407E-0100

KEY	PART CODE	DESCRIPTION	S P C	TYPE OF MODEL			I T C	C O L	G R P	REMARKS
				SSM48 TXG23	SSM54 TXG23	SSM60 TXG23				
1	8595-402-410-00	DECK/MOWER/48/TXG	*	1				7F		
2	8595-608-082-00	PIN/16X96	*	2						
3	1560-601-028-00	SPRING/HC042	*	2						
4	V580-140-504-00	PIN,SPRING/5 X40 W	*	2						
5	8595-406-220-00	COVER/DISCHARGE COMP	*	1				7F		
6	P115-810-011-00	PLATE/03X15X65	*	2						
7	V363-260-008-00	NUT/WASHER	*	4						
8	3768-112-001-00	SPRING,CLUTCH RETURN	*	1						
9	V201-260-803-00	BOLT/M 8X30	*	1						
10	V304-260-008-00	NUT	*	1						
11	8595-407-220-01	COVER/BELT/LF/F COMP	*	1				7F		
12	2149-602-012-00	CAP/32	*	1						
13	V362-260-008-00	NUT/WASHER	*	2						
14	8595-407-230-01	COVER/BELT/RH/F COMP	*	1				7F		
15	2149-602-012-00	CAP/32	*	2						
16	V362-260-008-00	NUT/WASHER	*	2						
17	V362-260-008-00	NUT/WASHER	*	8						

FIG. 11 MOWER DECK,COVER SYSTEM (SSM60)



8654-403J-0100,8654-406B-0100,8654-407H-0100

KEY	PART CODE	DESCRIPTION	S P C	TYPE OF MODEL			I T C	C O L	G R P	REMARKS
				SSM48 TXG23	SSM54 TXG23	SSM60 TXG23				
1	8654-403-770-00	DECK/MOWER/60/TXG	*			1			7F	
2	8595-608-082-00	PIN/16X96	*			2				
3	1560-601-028-00	SPRING/HCO42	*			2				
4	V580-140-504-00	PIN,SPRING/5 X40 W	*			2				
5	8654-406-550-00	COVER/DISCHARGE COMP	*			1			7F	
6	P115-810-011-00	PLATE/03X15X65	*			2				
7	V363-260-008-00	NUT/WASHER	*			4				
8	8654-406-001-00	STOPPER/COVER	*			2				
9	3670-471-005-00	WASHER/12X30X05	*			6				
10	V304-260-012-00	NUT/M12	*			2				
11	V401-160-012-00	WASHER,SP/M12	*			2				
12	8654-407-770-00	COVER/BELT/L/TX COMP	*			1			7F	
13	2149-602-012-00	CAP/32	*			1				
14	8654-407-780-00	COVER/BELT/R/TX COMP	*			1			7F	
15	2149-602-012-00	CAP/32	*			2				
16	V362-260-008-00	NUT/WASHER	*			12				
17	V362-260-008-00	NUT/WASHER	*			4				

Numerical Index

8595-097-110-00

Part Code	Fig.Key	Part Code	Fig.Key	Part Code	Fig.Key
1427-317-003-00	12 6	8593-014-200-10	4 11	8595-406-220-00	10 5
	13 9		5 11	8595-407-220-01	10 11
1434-211-004-00	4 3		6 11	8595-407-230-01	10 14
	5 3	8595-201-011-00	1 4	8595-501-001-10	12 3
	6 3		2 1		13 15
1560-601-028-00	9 3		3 1	8595-505-002-00	12 5
	10 3	8595-201-012-00	1 6		13 8
	11 3		2 3	8595-505-051-30	12 1
	14 3		3 3		13 16
	14 7	8595-201-013-00	1 9	8595-608-082-00	9 2
1564-275-007-00	13 4		2 6		10 2
1593-901-015-00	15 8		3 6		11 2
1594-218-001-00	1 10	8595-201-015-00	1 16		14 2
	2 7		2 13		14 6
	3 7		3 12	8595-901-005-00	15 6
1594-221-001-00	7 4	8595-201-016-00	1 17	8595-901-006-00	15 2
	7 17		2 14	8595-901-007-00	15 3
	8 4		3 14	8595-901-008-10	15 7
	8 17	8595-201-017-00	1 18	8597-202-500-00	4 9
2149-602-012-00	9 12		2 15	8597-202-501-00	4 10
	9 14		3 15		5 10
	10 12	8595-201-021-00	1 21		6 10
	10 15		2 18	8597-301-002-00	1 27
	11 13		3 16		2 24
	11 15	8595-201-022-00	1 22	8654-101-221-00	16 1
2500-901-014-30	15 4		2 19	8654-101-230-00	16 5
2500-901-027-00	15 1		3 17	8654-101-232-00	16 6
3621-211-003-00	4 14	8595-201-023-00	3 21	8654-101-233-00	16 7
	5 14	8595-201-024-00	3 22	8654-201-042-00	2 21
	6 14	8595-201-025-00	1 12	8654-201-043-00	2 22
3670-471-005-00	11 9		2 9	8654-201-072-10	2 11
3737-341-006-00	4 16		3 9	8654-202-016-00	4 2
	5 16	8595-201-041-00	3 11		4 5
	6 16	8595-201-250-10	2 10		5 2
3737-341-007-00	4 17	8595-201-410-00	3 10		5 5
	5 17	8595-203-003-00	4 19		6 2
	6 17	8595-301-031-00	8 3		6 5
3746-111-011-00	4 6	8595-306-005-00	7 26	8654-203-081-00	6 19
	5 6		8 26	8654-203-810-00	6 9
	6 6	8595-306-006-00	7 27	8654-301-004-00	7 7
3768-112-001-00	9 8		8 27		7 20
	10 8	8595-306-007-00	7 28		8 7
7955-201-026-00	1 5		8 28		8 20
	2 2	8595-306-055-00	8 25	8654-301-085-00	7 3
	3 2	8595-402-410-00	10 1	8654-306-006-00	7 25

Numerical Index

8595-097-110-00

Part Code	Fig.Key	Part Code	Fig.Key	Part Code	Fig.Key
8654-403-770-00	11 1	8657-608-710-00	14 1	V363-260-008-00	11 7
8654-406-001-00	11 8	8657-608-720-00	14 5	V401-160-010-00	1 30
8654-406-550-00	11 5	8658-301-001-00	7 9		2 27
8654-407-770-00	11 12		7 22	V401-160-012-00	11 11
8654-407-780-00	11 14	8662-101-210-00	1 1	V401-160-016-00	4 7
8654-501-283-00	12 8	P115-810-011-00	9 6		5 7
	13 11		10 6		6 7
8654-501-770-00	13 3		11 6	V401-160-020-00	7 29
8654-901-002-00	15 5	V201-260-803-00	9 9		8 29
8657-101-501-00	16 2		10 9	V411-260-010-00	1 31
8657-101-511-00	16 3	V211-260-801-60	1 7		2 28
8657-101-811-00	16 4		2 4	V411-260-014-00	1 28
8657-201-072-00	1 24		3 4		2 25
8657-201-073-00	1 25	V211-261-002-50	7 2	V411-260-020-00	7 30
8657-201-074-00	1 14		7 13	V411-260-022-00	12 10
8657-201-710-00	1 13		8 2		13 13
8657-202-001-00	4 1		8 13	V580-140-504-00	9 4
	4 4	V211-661-002-00	1 26		10 4
8657-202-003-10	5 1		2 23		11 4
	5 4		3 23		12 9
	6 1	V304-260-008-00	4 18		13 12
	6 4		5 18		14 4
8657-202-220-10	5 9		6 18		14 8
8657-203-001-00	5 19		9 10	V580-140-804-00	1 2
8657-301-004-00	7 1		10 10	V600-110-600-60	1 19
	8 1	V304-260-010-00	1 29		2 16
8657-301-005-00	7 12		2 26		3 18
	8 12		7 16	V600-110-630-40	1 20
8657-301-007-00	8 9		8 16		2 17
	8 22	V304-260-012-00	11 10		3 13
8657-301-008-00	7 24	V304-460-016-00	4 8	V600-110-690-80	7 5
	8 24		5 8		7 18
8657-301-009-00	7 15		6 8		8 5
	8 15	V334-460-022-00	14 9		8 18
8657-306-005-00	8 30	V360-260-012-00	12 2	V704-140-016-00	4 13
8657-402-750-00	9 1		13 17		5 13
8657-406-210-00	9 5	V362-260-008-00	9 15		6 13
8657-407-210-01	9 13		9 16	V704-140-017-00	4 12
8657-407-220-01	9 11		10 13		5 12
8657-501-500-10	13 1		10 16		6 12
8657-501-501-00	13 2		10 17	V704-140-025-00	13 5
8657-501-530-00	12 7		11 16	V705-140-052-00	7 6
	13 10		11 17		7 19
8657-501-540-10	12 4	V363-260-008-00	9 7		8 6
	13 7		10 7		8 19

Numerical Index

8595-097-110-00

Part Code	Fig.Key	Part Code	Fig.Key	Part Code	Fig.Key
V707-140-055-00	1 15 2 12 3 19				
V707-140-062-00	1 11 2 8				
	3 8 7 10 7 23 8 10 8 23				
V721-103-108-00	1 8 2 5 3 5				
V744-130-551-20	1 23 2 20				
V744-135-520-80	3 20 7 8 7 21 8 8 8 21				
V760-150-000-00	4 15 5 15 6 15 7 11 7 14				
	8 11 8 14 12 11 13 6 13 14				

www.emc-motoculture.com

Alphabetical Index

Description	Fig.Key	Description	Fig.Key	Description	Fig.Key
ARM/FRONT COMP	14 1	BUSH/16X18X15	5 10	GEAR/BEVEL/25-1 SET	2 10
ARM/TENSION ASSY	4 9	BUSH/16X18X15	6 10	GEAR/BEVEL/27-1 SET	1 13
ARM/TENSION ASSY	5 9	BUSH/22X25X25	12 8	GEAR/BEVEL/28-1 SET	3 10
ARM/TENSION ASSY	6 9	BUSH/22X25X25	13 11	GREASENIPPLE	16 6
AS YOKE ASSY	16 2	BUSH/26X30X20	13 2	JOINT/UNIVERSAL SET	1 1
BEARING	7 5	CAP/32	9 12	JOURNALCROSSE ASSY	16 5
BEARING	7 18	CAP/32	9 14	KEY/06X06X28	4 2
BEARING	8 5	CAP/32	10 12	KEY/06X06X28	4 5
BEARING	8 18	CAP/32	10 15	KEY/06X06X28	5 2
BEARING, RB 6006	1 19	CAP/32	11 13	KEY/06X06X28	5 5
BEARING, RB 6006	2 16	CAP/32	11 15	KEY/06X06X28	6 2
BEARING, RB 6006	3 18	CASE/BEVEL	1 4	KEY/06X06X28	6 5
BEARING, RB/6304	1 20	CASE/BEVEL	2 1	LABEL/CE	15 1
BEARING, RB/6304	2 17	CASE/BEVEL	3 1	LABEL/DANGER	15 4
BEARING, RB/6304	3 13	CLIP, PIN	12 6	LABEL/DANGER/DISCHAR	15 6
BEARING/BALL 6205SH2	7 4	CLIP, PIN	13 9	LABEL/GAUGEWHEEL	15 7
BEARING/BALL 6205SH2	7 17	COLLAR/26X36X3	4 3	LABEL/MAINTENANCE	15 8
BEARING/BALL 6205SH2	8 4	COLLAR/26X36X3	5 3	LABEL/PTO	15 5
BEARING/BALL 6205SH2	8 17	COLLAR/26X36X3	6 3	LABEL/WARNING/BELT	15 2
BEARING/BALL 6305SH2	1 10	COLLAR/BRADE	7 9	LABEL/WARNING/HOT	15 3
BEARING/BALL 6305SH2	2 7	COLLAR/BRADE	7 22	METAL/CENTER	7 12
BEARING/BALL 6305SH2	3 7	COLLAR/BRADE	8 9	METAL/CENTER	8 12
BELT/VB092	4 19	COLLAR/BRADE	8 22	METAL/SIDE	7 1
BELT/VB101	5 19	COLLER/26X34X15	7 24	METAL/SIDE	8 1
BELT/VB113	6 19	COLLER/26X34X15	8 24	NIPPLE, GREASE	4 15
BLADE/50X428/E	8 25	COVER/BELT/L/TX COMP	11 12	NIPPLE, GREASE	5 15
BLADE/60X472/D	8 30	COVER/BELT/LF/F COMP	10 11	NIPPLE, GREASE	6 15
BLADE/60X528/C	7 25	COVER/BELT/LH/F COMP	9 11	NIPPLE, GREASE	7 11
BLOT/M10X25	1 27	COVER/BELT/R/TX COMP	11 14	NIPPLE, GREASE	7 14
BLOT/M10X25	2 24	COVER/BELT/RH/F COMP	9 13	NIPPLE, GREASE	8 11
BOLT (S) M10X25	7 2	COVER/BELT/RH/F COMP	10 14	NIPPLE, GREASE	8 14
BOLT (S) M10X25	7 13	COVER/CASE	1 6	NIPPLE, GREASE	12 11
BOLT (S) M10X25	8 2	COVER/CASE	2 3	NIPPLE, GREASE	13 6
BOLT (S) M10X25	8 13	COVER/CASE	3 3	NIPPLE, GREASE	13 14
BOLT, SEMS (S) M8X16	1 7	COVER/DISCHARGE COMP	9 5	NUT	1 29
BOLT, SEMS (S) M8X16	2 4	COVER/DISCHARGE COMP	10 5	NUT	2 26
BOLT, SEMS (S) M8X16	3 4	COVER/DISCHARGE COMP	11 5	NUT	4 18
BOLT/M 8X30	9 9	DECK/MOWER/48/TXG	10 1	NUT	5 18
BOLT/M 8X30	10 9	DECK/MOWER/54/TXG	9 1	NUT	6 18
BOLT/M10X20	1 26	DECK/MOWER/60/TXG	11 1	NUT	7 16
BOLT/M10X20	2 23	FITTINGYOKE	16 1	NUT	8 16
BOLT/M10X20	3 23	FORK/M22 COMP	14 5	NUT	9 10
BRACKET/CASE/LH	1 24	FORK/WHEEL ASSY	13 1	NUT	10 10
BRACKET/CASE/RH	1 25	FORK/WHEEL/R COMP	12 4	NUT	14 9
BUSH/16X18X15	4 10	FORK/WHEEL/R COMP	13 7	NUT/M12	11 10

Alphabetical Index

8595-097-110-00

Description	Fig.Key	Description	Fig.Key	Description	Fig.Key
NUT/M16	4 8	PLATE/L/75X106	2 22	SEAL/OIL	1 12
NUT/M16	5 8	PLATE/L/75X65	3 21	SEAL/OIL	2 9
NUT/M16	6 8	PLUG, DRAIN (1/4)	1 5	SEAL/OIL	3 9
NUT/M20X1.5	7 28	PLUG, DRAIN (1/4)	2 2	SEAL/OIL	7 7
NUT/M20X1.5	8 28	PLUG, DRAIN (1/4)	3 2	SEAL/OIL	7 20
NUT/WASHER	9 7	PULLEY COMP	4 11	SEAL/OIL	8 7
NUT/WASHER	9 15	PULLEY COMP	5 11	SEAL/OIL	8 20
NUT/WASHER	9 16	PULLEY COMP	6 11	SHAFT YOKE ASSY	16 3
NUT/WASHER	10 7	PULLEY/VB125	4 1	SHAFT/BRADE	8 3
NUT/WASHER	10 13	PULLEY/VB125	4 4	SHAFT/INPUT	1 9
NUT/WASHER	10 16	PULLEY/VB137	5 1	SHAFT/INPUT	2 6
NUT/WASHER	10 17	PULLEY/VB137	5 4	SHAFT/INPUT	3 6
NUT/WASHER	11 7	PULLEY/VB137	6 1	SHAFT/OUTPUT	1 14
NUT/WASHER	11 16	PULLEY/VB137	6 4	SHAFT/OUTPUT	2 11
NUT/WASHER	11 17	RING, SNAP/16 C	4 13	SHAFT/OUTPUT	3 11
NUT/WASHER	12 2	RING, SNAP/16 C	5 13	SHAFT/SIDE	7 3
NUT/WASHER	13 17	RING, SNAP/16 C	6 13	SHIM/0.1	1 17
O-RING/G80	1 8	RING, SNAP/17 C	4 12	SHIM/0.1	1 21
O-RING/G80	2 5	RING, SNAP/17 C	5 12	SHIM/0.1	2 14
O-RING/G80	3 5	RING, SNAP/17 C	6 12	SHIM/0.1	2 18
PIN, SPRING/5 X40 W	9 4	RING, SNAP/25 C	13 5	SHIM/0.1	3 14
PIN, SPRING/5 X40 W	10 4	RING, SNAP/52 C	7 6	SHIM/0.1	3 16
PIN, SPRING/5 X40 W	11 4	RING, SNAP/52 C	7 19	SHIM/0.2	1 18
PIN, SPRING/5 X40 W	12 9	RING, SNAP/52 C	8 6	SHIM/0.2	1 22
PIN, SPRING/5 X40 W	13 12	RING, SNAP/52 C	8 19	SHIM/0.2	2 15
PIN, SPRING/5 X40 W	14 4	RING/SNAP	1 11	SHIM/0.2	2 19
PIN, SPRING/5 X40 W	14 8	RING/SNAP	1 15	SHIM/0.2	3 15
PIN, SPRING/8 X40 W	1 2	RING/SNAP	2 8	SHIM/0.2	3 17
PIN/08X44	12 5	RING/SNAP	2 12	SHIM/1.2	7 27
PIN/08X44	13 8	RING/SNAP	3 8	SHIM/1.2	8 27
PIN/12X117	12 1	RING/SNAP	3 19	SLEEVEYORK	16 4
PIN/12X117	13 16	RING/SNAP	7 10	SPRING, CHAIN TENSION	4 16
PIN/16X96	9 2	RING/SNAP	7 23	SPRING, CHAIN TENSION	5 16
PIN/16X96	10 2	RING/SNAP	8 10	SPRING, CHAIN TENSION	6 16
PIN/16X96	11 2	RING/SNAP	8 23	SPRING, CLUTCH RETURN	9 8
PIN/16X96	14 2	ROD, CHAIN TENSION	4 17	SPRING, CLUTCH RETURN	10 8
PIN/16X96	14 6	ROD, CHAIN TENSION	5 17	SPRING/HCO42	9 3
PIN/GAUGE COMP	13 3	ROD, CHAIN TENSION	6 17	SPRING/HCO42	10 3
PIPE/GREASE	7 15	SEAL, OIL/TC305512	1 23	SPRING/HCO42	11 3
PIPE/GREASE	8 15	SEAL, OIL/TC305512	2 20	SPRING/HCO42	14 3
PLATE/03X15X65	9 6	SEAL, OIL/TC305512	3 20	SPRING/HCO42	14 7
PLATE/03X15X65	10 6	SEAL, OIL/TC35528	7 8	STOPPER/COVER	11 8
PLATE/03X15X65	11 6	SEAL, OIL/TC35528	7 21	SURCLIP/HOLE	16 7
PLATE/L/60X65	3 22	SEAL, OIL/TC35528	8 8	WASHER	4 6
PLATE/L/75X106	2 21	SEAL, OIL/TC35528	8 21	WASHER	4 14

Alphabetical Index

8595-097-110-00

Description	Fig.Key	Description	Fig.Key	Description	Fig.Key
WASHER	5 6				
WASHER	5 14				
WASHER	6 6				
WASHER	6 14				
WASHER, PL/M14	1 28				
WASHER, PL/M14	2 25				
WASHER, PL/M22	12 10				
WASHER, PL/M22	13 13				
WASHER, SP/M10	1 30				
WASHER, SP/M10	2 27				
WASHER, SP/M12	11 11				
WASHER, SP/M16	4 7				
WASHER, SP/M16	5 7				
WASHER, SP/M16	6 7				
WASHER, SP/M20	7 29				
WASHER, SP/M20	8 29				
WASHER/12X30X05	11 9				
WASHER/20X60X06	7 26				
WASHER/20X60X06	8 26				
WASHER/27X40X2	13 4				
WASHER/45X55X01	1 16				
WASHER/45X55X01	2 13				
WASHER/45X55X01	3 12				
WASHER/M10	1 31				
WASHER/M10	2 28				
WASHER/M20	7 30				
WHEEL/GAUGE ASSY	12 7				
WHEEL/GAUGE ASSY	13 10				
WHEEL/GAUGE/FRONT	12 3				
WHEEL/GAUGE/FRONT	13 15				

www.anc-motoculture.com



**Yvan Béal - 21, av. de l'Agriculture - B.P. 16
Z.I. du Brézet - 63014 Clermont-Ferrand Cedex 2
Tél : 04 73 91 93 51 - Télécopie : 04 73 90 23 11
www.yvanbeal.fr - E-mail : info@yvanbeal.fr
R.C.S. Clermont-Fd B 304 973 886 - S.A.S. au capital de 612 000 €**