



# PIÈCES DÉTACHÉES

## Plateau de coupe

SSM48FE4  
(SF200 - 230) **SF222**

SSM48G15E4  
(SG13 - 15 - 153) **SG635/153**

SSM48G17E4  
(SG17 - 173) **SG635/173**

SSM48MH17E4  
(TMG18) **T1048**

SSM48MH17E4  
(TM217 - 215 MECA) **T21560**

SSM48MH17E4  
(TM217 - 215 HYDRO) **T21561**

**SSM48 : M17E4, MH17E4, FE4  
G17E4, F15E4**

**SRM48 : ME4, MHE4, FE4  
G17E4, G15E4**





## Directions for use of Parts Catalogue

### 1. Applicable model of machines

All component and option parts used for SSM48 – M mower are listed in this parts catalogue.

- NOTES : M17 ..... FOR TM 215/217 (STD)  
 MH17 ..... FOR TM215/217 (HST), TMG18  
 F ..... FOR SF200/230  
 G17 ..... FOR SG173  
 G15 ..... FOR SG133/153  
 M ..... FOR TM215/217 (STD)  
 MH ..... FOR TM215/217 (HST), TMG18  
 E4 ..... EUROPE AND OCEANIA

### 2. Explanation for head paragraph

KEY	PART CODE	DESCRIPTION	S P C	TYPE OF MODEL						I T C	C O L	G R P	REMARKS
				SSM48M	SSM48F	SSM48G	SRM48M	SRM48F	SRM48G				
1	8595-211-001-20	CASE/UPPER	*	1 229									
1A	8657-201-081-00	CASE/UPPER	*	230			1						
2	8595-211-002-10	CASE/LOWER	*				1						
3	V523-100-801-80	PIN	*	2			2						
4	V211-260-803-00	BOLT, SEMS	*	6			6						
			*	2 229									
			*	2 230			2						
			*	2			2						
			*	1			1						

- ① KEY shows the location of parts diagramed in the illustration.
- ② Parts numbers begin with `V` and `W` are standard parts of the market.
- ③ `LH` and `RH` on the parts name are described against the moving direction of the machine or are described on the condition how to install parts on the machines.

- ④ SPC : The following symbol classifies parts to be used for machines.

` \* ` means standard parts.

` T ` shows that the parts can be installed as optional parts.

` R ` shows that the parts can be used as applicable parts to replace originally equipped parts.

- ⑤ Upper column : QTY shows the number of parts to be used for one unit of machine.

` M ` is indicated for parts supplied by a meter long.

` ℓ ` is indicated for parts supplied by liter.

` AR ` is indicated for parts need to be adjusted or regulated.

Lower column : serial number

- 229 means serial number up to 229.

- 230 means serial number 230 and after.

- ⑥ ITC : Interchangeability

1 ... OLD ← NEW

New parts can be used in place of the old parts.

2 ... OLD → NEW

Old parts can be used in place of the new parts.

3 ... OLD ↔ NEW

Old parts and new parts can not be replaced each other.

- ⑦ COL : Color code

Color is signified with color code number for colored parts.

Please see the color list shown in the next page.

- ⑧ GRP : Parts shown in this column can be replaced by SET parts.

Example : Parts marked (A) can be replaced by parts marked (B), and (D) for (C), so the rest follow in the same alphabetical order.

- ⑨ Remarks

\* Other maker's part code number is shown in this column.

\* When Fig. No. is shown in the Remark column of SET parts or ASSY parts, each of their component parts are listed in said Fig. No.

### 3. Color:

The following colors are used for color parts.

COLOR CODE	C O L O R	SPRAY TYPE CODE NUMBER	PAINTS 4K DRUM	PAINTS 16K DRUM
4 G	CRYSTAL BLUE	1300-957-001-10	1300-957-003-00	1300-957-004-00
7 F	MIRROR BLACK	1300-954-001-10	1300-954-003-00	1300-954-004-00

NOTE : Color code is signified only for the parts assigned by the maker as color parts.

### 4. Serial Numbers:

For chassies serial number is shown on the LABEL.

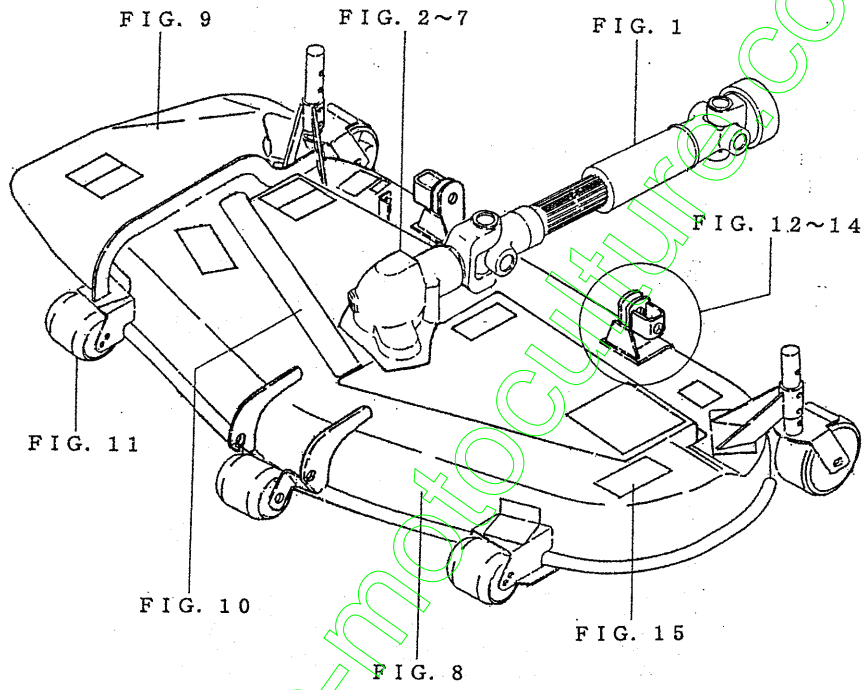
Please see



### 5. Parts Order

- 1) Parts numbers listed in the parts catalogue are all registered in "ISEKI on-line computer".
- 2) When you order parts, please make sure of correct numbers.
- 3) When substitute parts is available, the part number ordered will be automatically turned to a new part number.
- 4) Please be sure to use "ISEKI GENUINE PARTS".

Any other similar parts other than ISEKI parts when used may cause a trouble that makes us unable to repair or guarantee the warrant.

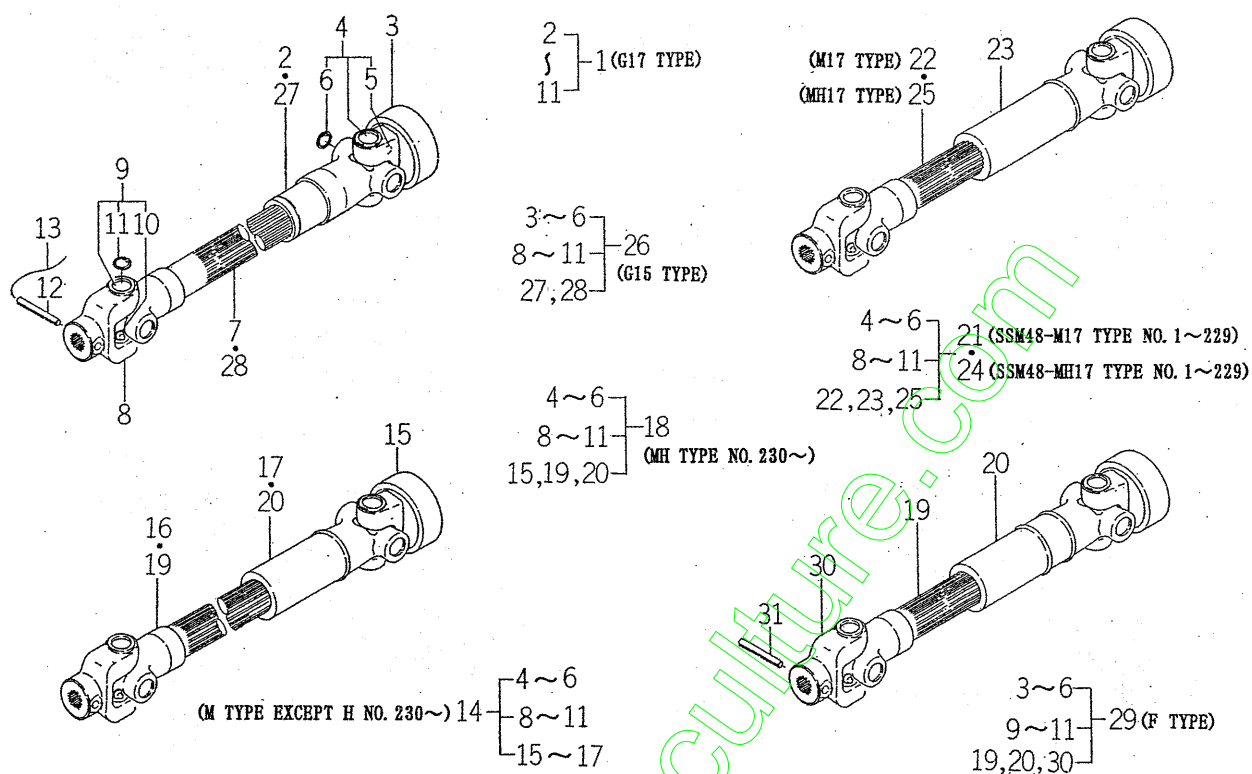


## CONTENTS

SSM48 • SRM48

JOINT (UNIVERSAL) SYSTEM .....	Fig. 1
CASE (BEVEL) SYSTEM (F TYPE) .....	Fig. 2
CASE (BEVEL) SYSTEM (G TYPE) .....	Fig. 3
CASE (BEVEL) SYSTEM (M TYPE) .....	Fig. 4
PULLEY SYSTEM .....	Fig. 5
METAL SYSTEM .....	Fig. 6
BLADE SYSTEM .....	Fig. 7
DECK SYSTEM .....	Fig. 8
COVER (DISCHARGE) SYSTEM .....	Fig. 9
COVER (BELT) SYSTEM .....	Fig. 10
WHEEL (GAUGE) SYSTEM .....	Fig. 11
LIFT SYSTEM (F TYPE) .....	Fig. 12
LINK SYSTEM (M TYPE) .....	Fig. 13
CYLINDER SYSTEM (M TYPE) .....	Fig. 14
LABEL .....	Fig. 15

FIG. 1 JOINT (UNIVERSAL) SYSTEM



8595-101C

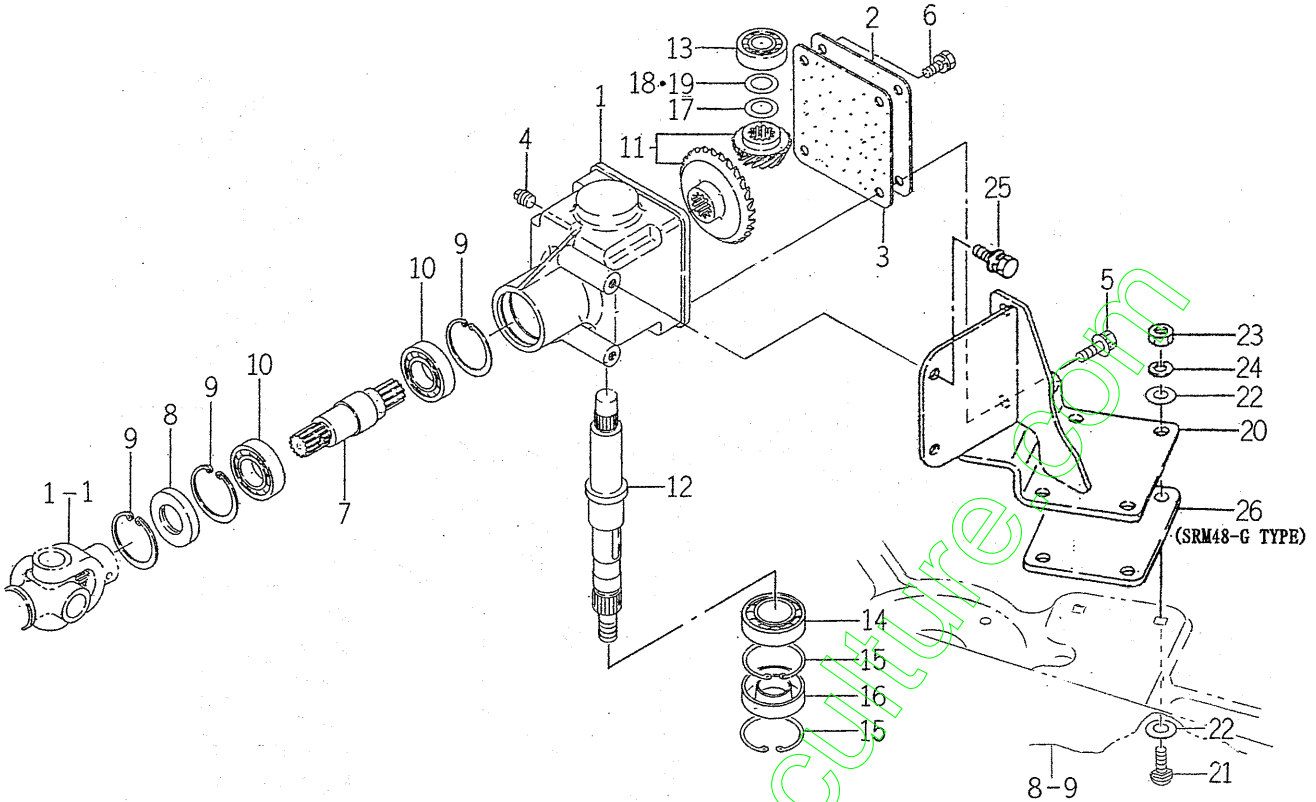
KEY	PART CODE	DESCRIPTION	S P C	TYPE OF MODEL						I T C	C O L	G R P	REMARKS
				SSM48M	SSM48F	SSM48G	SRM48M	SRM48F	SRM48G				
1	8595-101-450-00	JOINT/UNIVERSAL SET	*			1				1			
2	8595-101-461-00	SPLINEYOKE	*			1				1			
3	8595-101-412-00	AS3-7 ASSY	*		1	1		1		1			
4	8654-101-230-00	JOURNALCROSSE ASSY	*		1	1		1		1			
4	8654-101-230-00	JOURNALCROSSE ASSY	*	2			2						
5	8654-101-232-00	GREASENIPPLE	*		1	1		1		1			
5	8654-101-232-00	GREASENIPPLE	*	2			2						
6	8654-101-233-00	SURCLIP/HOLE	*		4	4		4		4			
6	8654-101-233-00	SURCLIP/HOLE	*	8			8						
7	8595-101-471-00	SHAFTYOKE	*			1				1			
8	8595-101-422-00	FITTING YOKE	*	1		1	1			1			
9	8654-101-230-00	JOURNALCROSSE ASSY	*		1	1		1		1			
10	8654-101-232-00	GREASENIPPLE	*		1	1		1		1			
11	8654-101-233-00	SURCLIP/HOLE	*		4	4		4		4			
12	V580-140-604-00	PIN, SPRING/6 X40 W	*	1		1	1			1			
13		WIRE	*	1	1	1	1	1		1			
14	8597-101-500-00	JOINT/UNIVERSAL ASSY	*	1 230-			1						
15	8657-101-501-00	AS YOKE ASSY	*	1			1						
16	8597-101-501-00	SHAFTYOKE ASSY	*	1 230-			1						
17	8597-101-502-00	SLEEVEYOKE	*	1 230-			1						
18	8597-101-510-00	JOINT/UNIVERSAL ASSY	*	1 230-			1						
19	8654-101-222-00	SHAFTYOKE ASSY	*	1 230-	1		1	1					
20	8654-101-212-00	SLEEVEYOKE ASSY	*	1 230-	1		1	1					
21	8657-101-500-00	JOINT/UNIVERSAL ASSY	*	1 -229									
22	8657-101-502-00	SHAFT YOKE ASSY	*	1 -229									
23	8657-101-503-00	SLEEVE YOKE ASSY	*	1 -229									
24	8657-101-510-00	JOINT/UNIVERSAL ASSY	*	1 -229									
25	8657-101-511-00	SHAFT YOKE ASSY	*	1 -229									
26	8595-101-400-00	JOINT/UNIVERSAL	*			1				1			
27	8595-101-411-00	SPLINEYOKE	*			1				1			







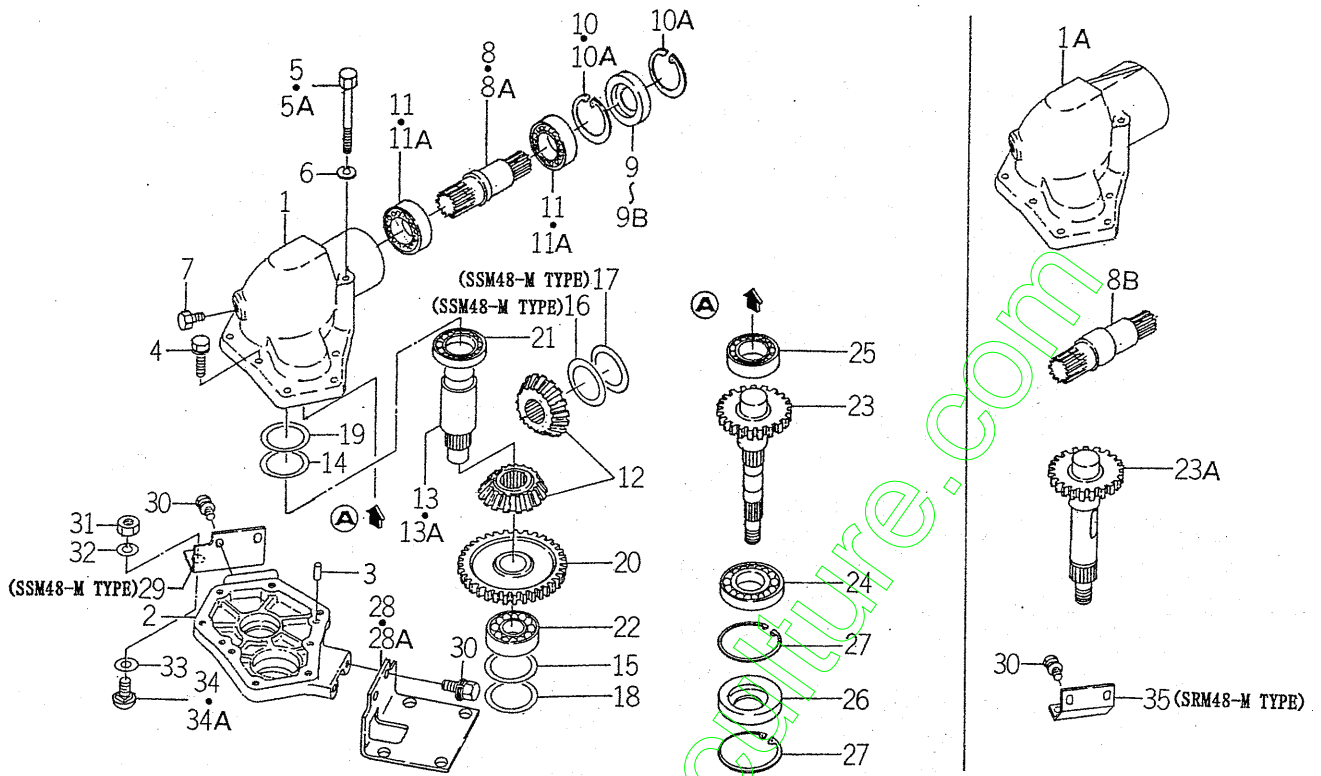
FIG. 3 CASE (BEVEL) SYSTEM (G TYPE)



8595-201G

KEY	PART CODE	DESCRIPTION	S P C	TYPE OF MODEL						I T C	C O L	G R P	REMARKS
				SSM48M	SSM48F	SSM48G	SRM48M	SRM48F	SRM48G				
1	8595-201-058-00	CASE/BEVEL	*			1			1				
2	8595-201-052-20	PLATE/I-108X112	*			1			1				
3	8595-201-053-20	GASKET	*			1			1				
4	V781-160-000-40	PLUG/SCREW	*			1			1				
5	V211-360-802-00	BOLT (SP) M8X20	*			2			2				
6	V211-260-801-60	BOLT, SEMS (S) M8X16	*			2			2				
7	8595-201-054-10	SHAFT, INPUT	*			1			1				
8	V744-125-470-80	SEAL, OIL/TC25478	*			1			1				
9	V705-140-047-00	RING, SNAP/47 C	*			3			3				
10	8595-201-009-00	BEARING/RB6005	*			2			2				
11	8595-201-270-00	GEAR/BEVEL/16-2 SET	*			1			1				
12	8595-201-059-00	SHAFT/OUTPUT	*			1			1				
13	V600-110-630-30	BEARING, RB/6303	*			1			1				
14	V600-111-600-60	BEARING, RB	*			1			1				
15	V707-140-055-00	RING/SNAP	*			2			2				
16	V744-130-551-20	SEAL, OIL/TC305512	*			1			1				
17	8595-201-069-10	SHIM/0.1	*			1			1				
18	8595-201-071-00	SHIM/0.2	*			1			1				
19	8595-201-081-00	SHIM/0.1	*			1			1				
20	8595-301-510-40	CASE, BRACKET COMP	*			1			1				
21	8597-301-002-00	BLOT/M10X25	*			4			4				
22	V411-260-014-00	WASHER, PL/M14	*			4			4				
23	V304-260-010-00	NUT	*			4			4				
24	V401-160-010-00	WASHER, SP/M10	*			4			4				
25	V211-360-802-00	BOLT (SP) M8X20	*			2			2				
26	8597-301-001-00	PLATE/I/100X135	*						1				

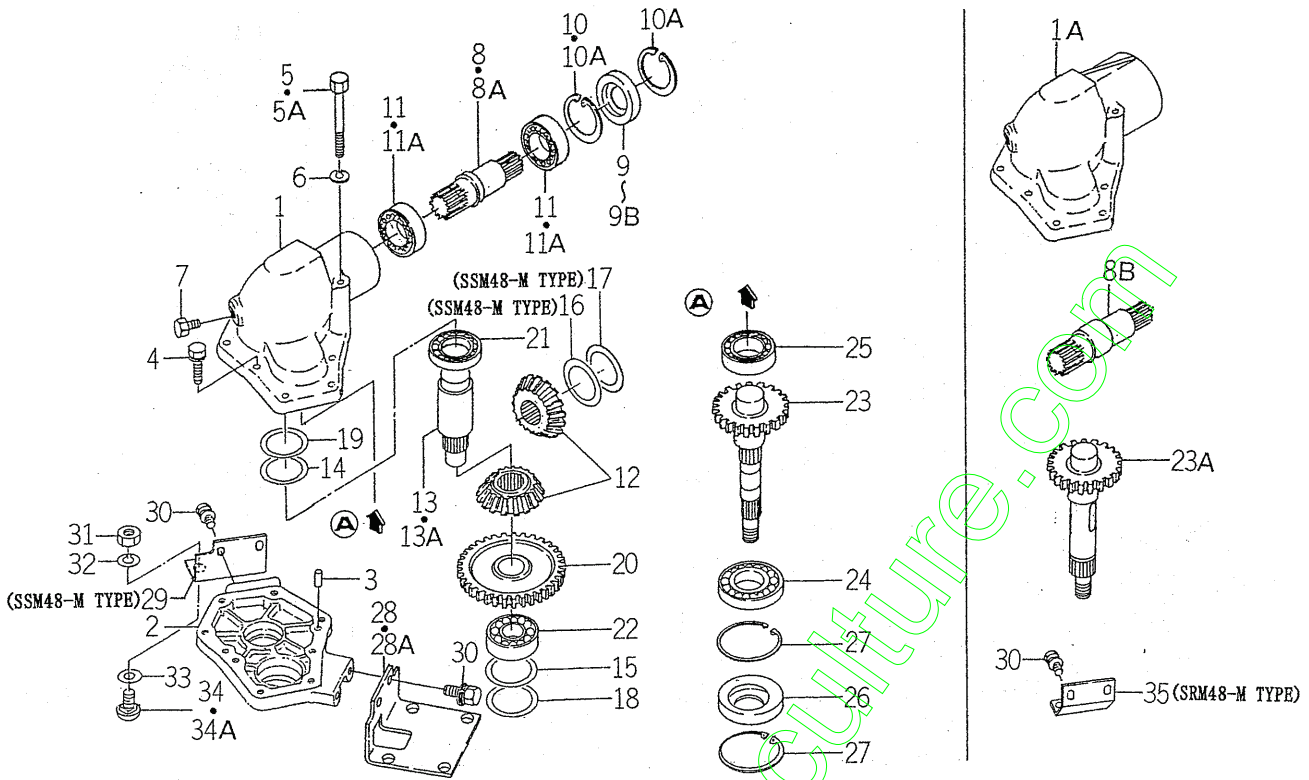
FIG. 4 CASE (BEVEL) SYSTEM (M TYPE)



8595-201E

KEY	PART CODE	DESCRIPTION	S P C	TYPE OF MODEL						I T C	C O L	G R P	REMARKS
				SSM48M	SSM48F	SSM48G	SRM48M	SRM48F	SRM48G				
1	8595-211-001-20	CASE/UPPER	*	1 -229									
1A	8657-201-081-00	CASE/UPPER	*	1 230-			1						
2	8595-211-002-10	CASE/LOWER	*	1			1						
3	V523-100-801-80	PIN	*	2			2						
4	V211-260-803-00	BOLT, SEMS	*	6			6						
5	V201-260-807-50	BOLT/M8X75	*	2 -229									
5A	V201-260-808-00	BOLT/M 8X80	*	2 230-			2						
6	V401-160-008-00	WASHER, SP/M 8	*	2			2						
7	7955-201-026-00	PLUG, DRAIN (1/4)	*	1			1						
8	8595-211-003-10	SHAFT/INPUT	*	1 -73									
8A	8595-211-003-20	SHAFT/INPUT	*	1 -229					3				
8B	8657-201-082-00	SHAFT/INPUT	*	1 230-			1						
9	V744-125-521-00	SEAL, OIL/TC255210	*	1 -73									
9A	8595-211-023-00	SEAL/OIL	*	1 -229									
9B	8657-201-083-00	SEAL/OIL	*	1 230-			1						
10	V705-140-052-00	RING, SNAP/52 C	*	1 -229									
10A	V707-140-062-00	RING/SNAP	*	2 230-			2						
11	1594-221-001-00	BEARING/BALL 6205SH2	*	2 -229									
11A	1650-219-009-00	BEARING/BALL	*	2 230-			2						
12	8595-211-200-20	GEAR/BEVEL/21-2 SET	*	1			1						
13	8595-211-004-10	SHAFT/COUNTER	*	1 -73									
13A	8595-211-004-20	SHAFT/COUNTER	*	1 74-			1		1				
14	8595-211-005-10	SHIM/O. 2	*	1			1						
15	8595-211-010-00	SHIM/O. 2	*	1			1						
16	8595-211-018-00	SHIM/O. 2	*	1 -229									
17	8595-211-019-00	SHIM/O. 1	*	1 -229									
18	8595-211-021-00	SHIM/O. 1	*	AR			AR						
19	8595-211-022-00	SHIM/O. 1	*	AR			AR						
20	8595-211-006-30	GEAR/SPUR/34	*	1			1						
21	V600-110-600-50	BEARING, RB/6005	*	1			1						

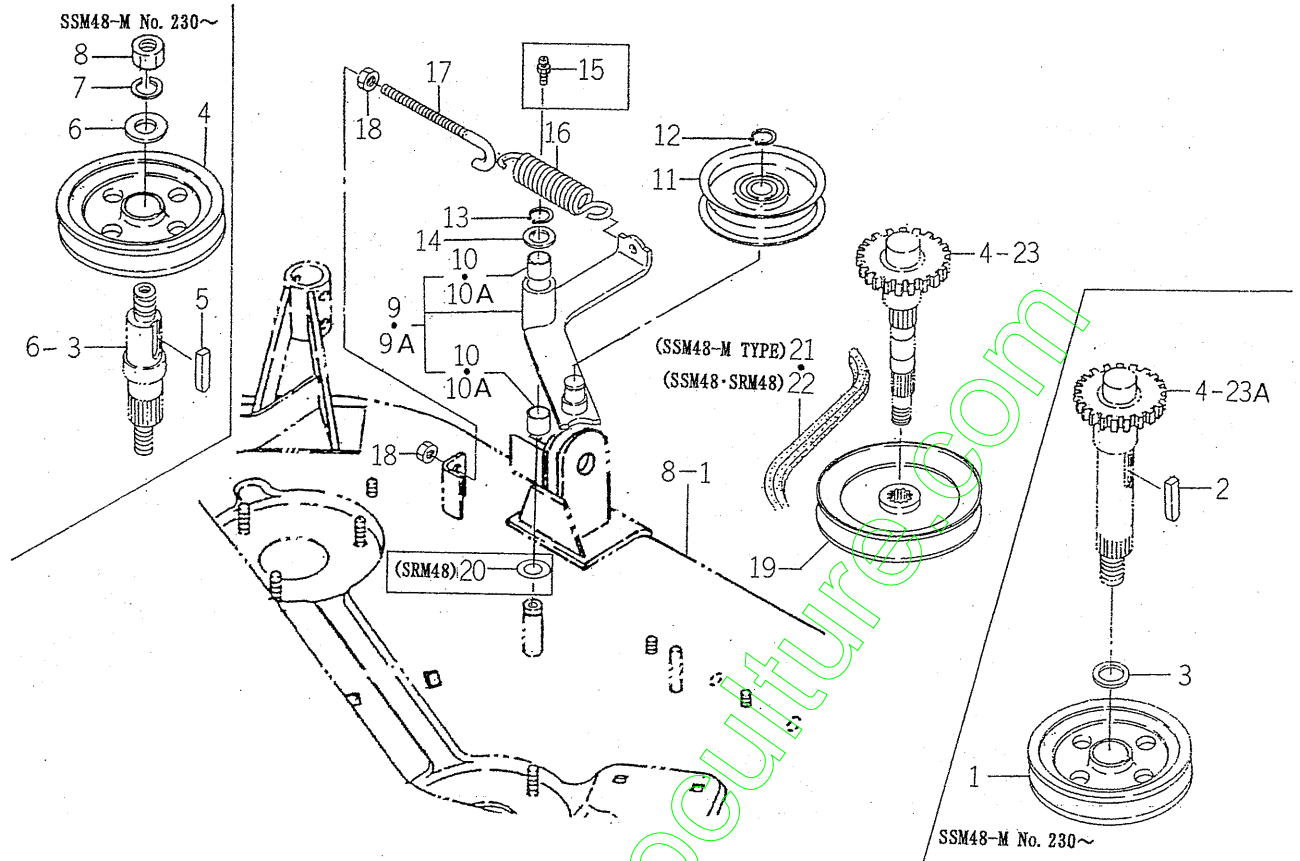
FIG. 4 CASE (BEVEL) SYSTEM (M TYPE)



8595-201E

KEY	PART CODE	DESCRIPTION	S P C	TYPE OF MODEL						I T C	C O L	G R P	REMARKS
				SSM48M	SSM48F	SSM48G	SRM48M	SRM48F	SRM48G				
22	V600-110-630-40	BEARING, RB/6304	*	1			1						
23	8595-211-007-20	GEAR/SPUR/21	*	1 -229									
23A	8597-201-053-00	GEAR/SPUR/21	*	1 230-			1						
24	V600-110-600-60	BEARING, RB 6006	*	1			1						
25	1594-221-001-00	BEARING/BALL 6205SH2	*	1			1						
26	8595-211-024-00	SEAL/OIL	*	1			1						
27	V707-140-055-00	RING/SNAP	*	2			2						
28	8595-211-008-20	PLATE/L/130X109	*	1 -229									
28A	8597-201-051-00	PLATE/L/130X109	*	1 230-			1						
29	8595-211-009-10	PLATE/L/105X64	*	1									
30	V211-361-002-00	BOLT, SEMS	*	4			4						
31	V304-260-010-00	NUT	*	6			6						
32	V401-160-010-00	WASHER, SP/M10	*	6			6						
33	V411-260-014-00	WASHER, PL/M14	*	6			6						
34	8595-301-007-10	BOLT/M10X20	*	6 -54									
34A	8597-301-002-00	BLOT/M10X25	*	6 55-			6						
35	8597-201-052-00	PLATE/STAY	*				1						

FIG. 5 PULLEY SYSTEM



8595-202A

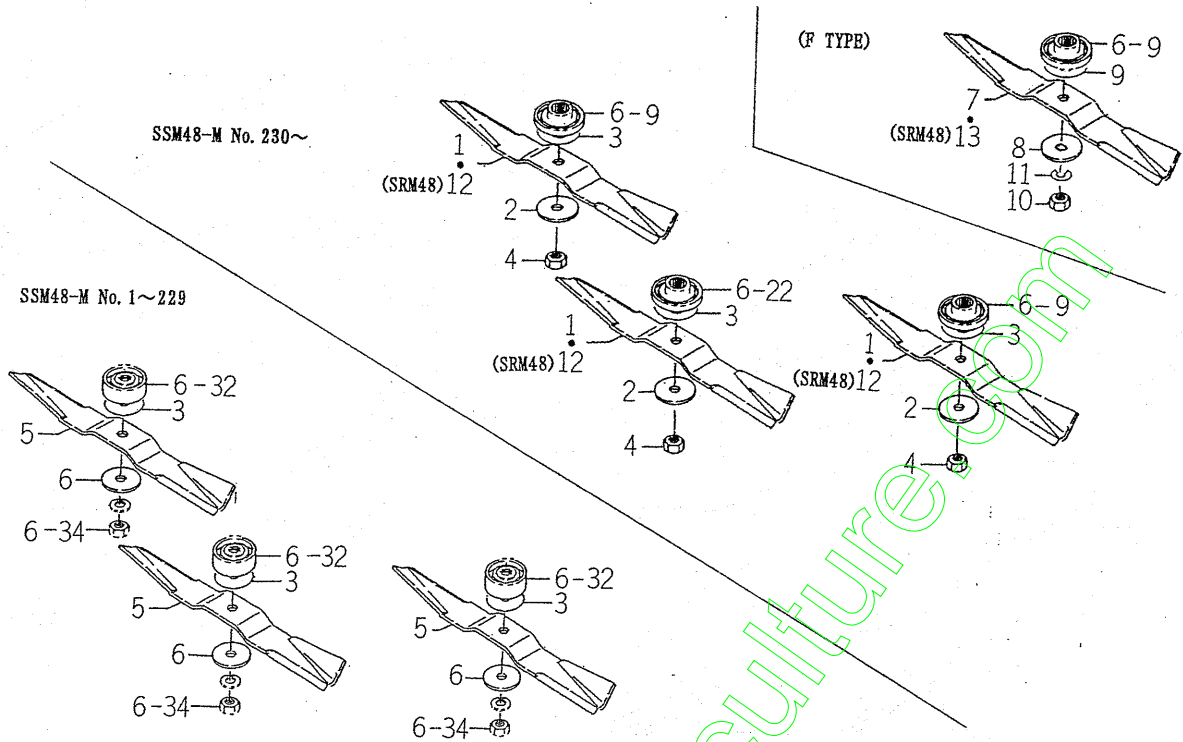
KEY	PART CODE	DESCRIPTION	S P C	TYPE OF MODEL						I T C	C O L	G R P	REMARKS
				SSM48M	SSM48F	SSM48G	SRM48M	SRM48F	SRM48G				
1	8657-202-001-00	PULLEY/VB125	*	1 230-	1	1	1	1	1				
2	8654-202-016-00	KEY/06X06X28	*	1 230-	1	1	1	1	1				
3	1434-211-004-00	COLLAR/26X36X3	*	1 230-	1	1	1	1	1				
4	8657-202-001-00	PULLEY/VB125	*	2 230-	2	2	2	2	2				
5	8654-202-016-00	KEY/06X06X28	*	2 230-	2	2	2	2	2				
6	3746-111-011-00	WASHER, BRAKE DRUM	*	2 230-	2	2	2	2	2				
7	V401-160-016-00	WASHER, SP/M16	*	2 230-	2	2	2	2	2				
8	V304-460-016-00	NUT/M16	*	2 230-	2	2	2	2	2				
9	8595-202-520-10	ARM, TENTION	*	1 -229	1	1	1	1	1				
9A	8597-202-500-00	ARM/TENSION ASSY	*	1 260-	1	1	1	1	1				
10	1560-275-012-00	BUSH/16X18X20	*	2 -229	2	2	2	2	2				
10A	8597-202-501-00	BUSH/16X18X15	*	2 260-	2	2	2	2	2				
11	8593-014-200-10	PULLEY COMP	*	1	1	1	1	1	1				
12	V704-140-017-00	RING, SNAP/17 C	*	1	1	1	1	1	1				
13	V704-140-016-00	RING, SNAP/16 C	*	1	1	1	1	1	1				
14	3621-211-003-00	WASHER	*	1	1	1	1	1	1				
15	V760-150-000-00	NIPPLE, GREASE	*	1 230-	1	1	1	1	1				
16	3737-341-006-00	SPRING, CHAIN TENSION	*	1	1	1	1	1	1				
17	3737-341-007-00	ROD, CHAIN TENSION	*	1	1	1	1	1	1				
18	V304-260-008-00	NUT/M 8	*	2	2	2	2	2	2				
19	8595-202-500-30	PULLY/VB120 COMP	*	1 -229			1	1	1				
20	V411-260-016-00	WASHER / M16	*				1	1	1				
21	8595-203-002-20	BELT, V/B091	*	1 -229			1	1	1				
22	8595-203-003-00	BELT/VB092	*	1 230-	1	1	1	1	1				







FIG. 7 BLADE SYSTEM



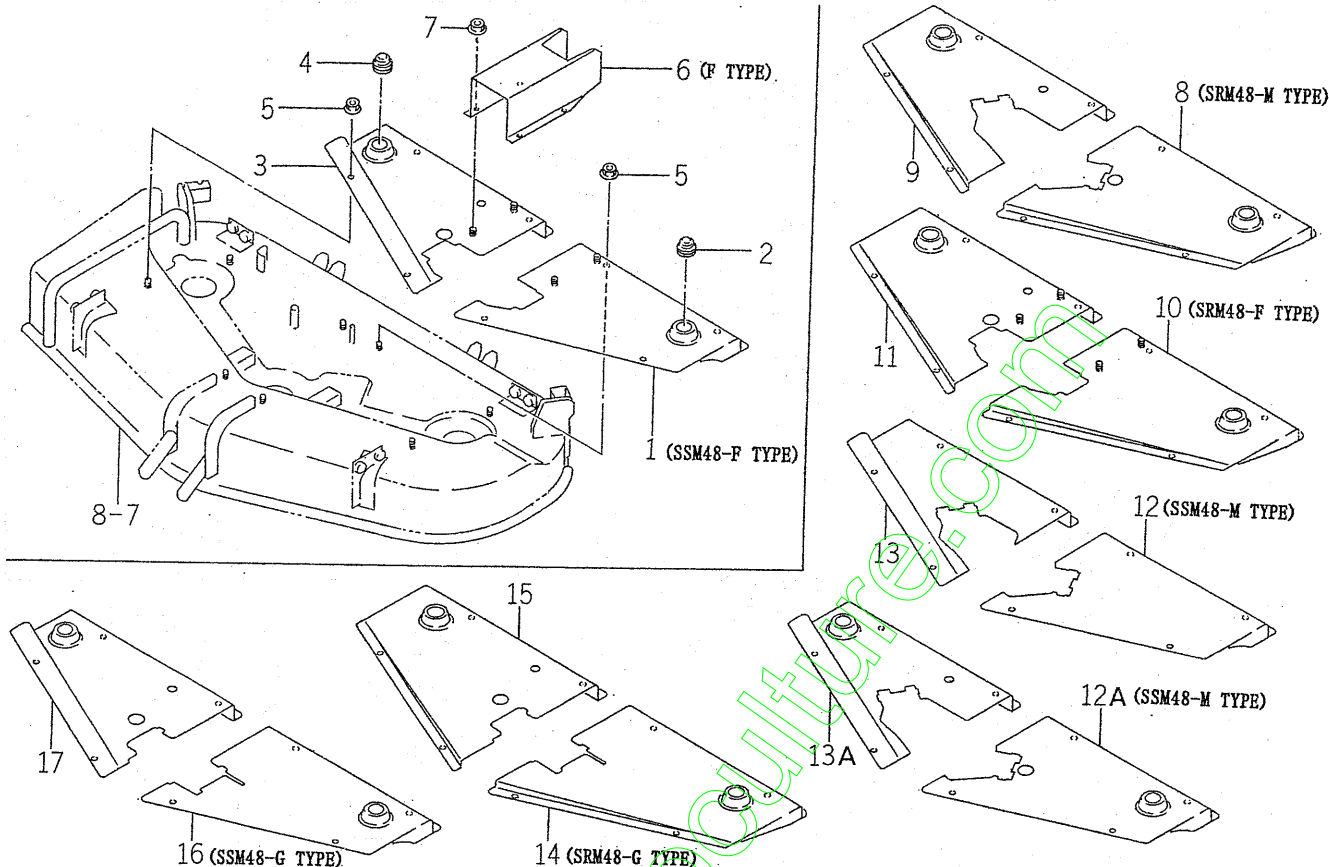
8595-306A

KEY	PART CODE	DESCRIPTION	S P C	TYPE OF MODEL						I T C	C O L	G R P	REMARKS
				SSM48M	SSM48F	SSM48G	SRM48M	SRM48F	SRM48G				
1	8595-306-002-00	BLADE/60X428	*	3 230-		3							
2	8657-306-002-00	WASHER/15X60X06	*	3 230-		3	3		3				
3	8595-305-011-00	SHIM/1.2	*	AR -229			AR		AR				
3	8595-305-011-00	SHIM/1.2	*	AR -229		AR							
4	V304-460-014-00	NUT/M14	*	3 230-		3	3		3				
5	8595-306-061-00	BLADE/50X426	*	3 -229									
6	8595-305-012-00	WASHER/14X55X05	*	3 -229									
7	8595-306-004-00	BLADE/60X428/C	*		3								
8	8595-306-005-00	WASHER/20X60X06	*		3			3					
9	8595-306-006-00	SHIM/1.2	*		3			3					
10	8595-306-007-00	NUT/M20X1.5	*		3			3					
11	V401-160-020-00	WASHER, SP/M20	*		3			3					
12	8597-306-001-00	BLADE/50X429	*				3		3				
13	8597-306-002-00	BLADE/50X429/C	*					3					





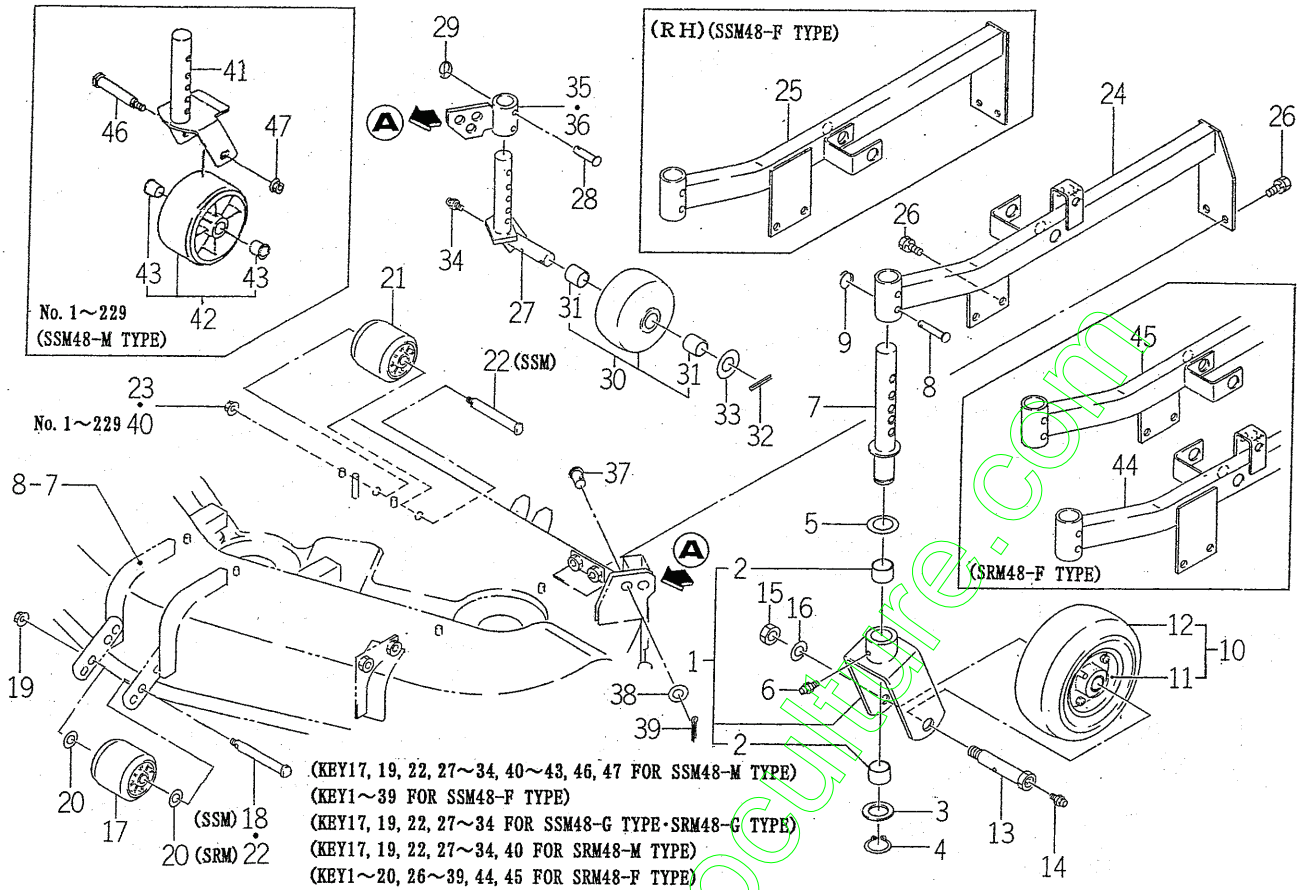
FIG. 10 COVER (BELT) SYSTEM



8595-407B

KEY	PART CODE	DESCRIPTION	S P C	TYPE OF MODEL						I T C	C O L	G R P	REMARKS
				SSM48M	SSM48F	SSM48G	SRM48M	SRM48F	SRM48G				
1	8595-407-220-00	COVER/BELT/LH/F COMP	*		1							4G	
2	2149-602-012-00	CAP/32	*		1	1		1	1				
2	2149-602-012-00	CAP/32	*		2		2						
3	8595-407-230-00	COVER/BELT/RH/F COMP	*		1							4G	
4	2149-602-012-00	CAP/32	*		1		1						
4	2149-602-012-00	CAP/32	*		2	2		2	2				
5	V362-260-008-00	NUT/WASHER	*	8	8	8	8	8	8				
6	8595-407-003-00	COVER/UNIVERSAL	*		1			1				4G	
7	V362-260-008-00	NUT/WASHER	*		4			4					
8	8597-407-520-00	COVER/BELT/LH COMP	*				1					7F	
9	8597-407-530-00	COVER/BELT/RH COMP	*				1					7F	
10	8597-407-310-00	COVER/BELT/LH/F COMP	*					1				4G	
11	8597-407-320-00	COVER/BELT/RH/F COMP	*					1				4G	
12	8595-407-810-00	COVER/BELT/LH COMP	*	1								7F	
12A	8595-407-810-10	COVER/BELT/LH COMP	*	1						3		7F	
13	8595-407-820-00	COVER/BELT/RH COMP	*	1								7F	
13A	8595-407-820-10	COVER/BELT/RH COMP	*	1						3		7F	
14	8597-407-220-00	COVER/BELT/LH/G COMP	*						1			7F	
15	8597-407-230-00	COVER/BELT/RH/G COMP	*						1			7F	
16	8595-407-240-00	COVER/BELT/LH/G COMP	*			1						7F	
17	8595-407-250-00	COVER/BELT/RH/G COMP	*			1						7F	

FIG. 11 WHEEL (GAUGE) SYSTEM



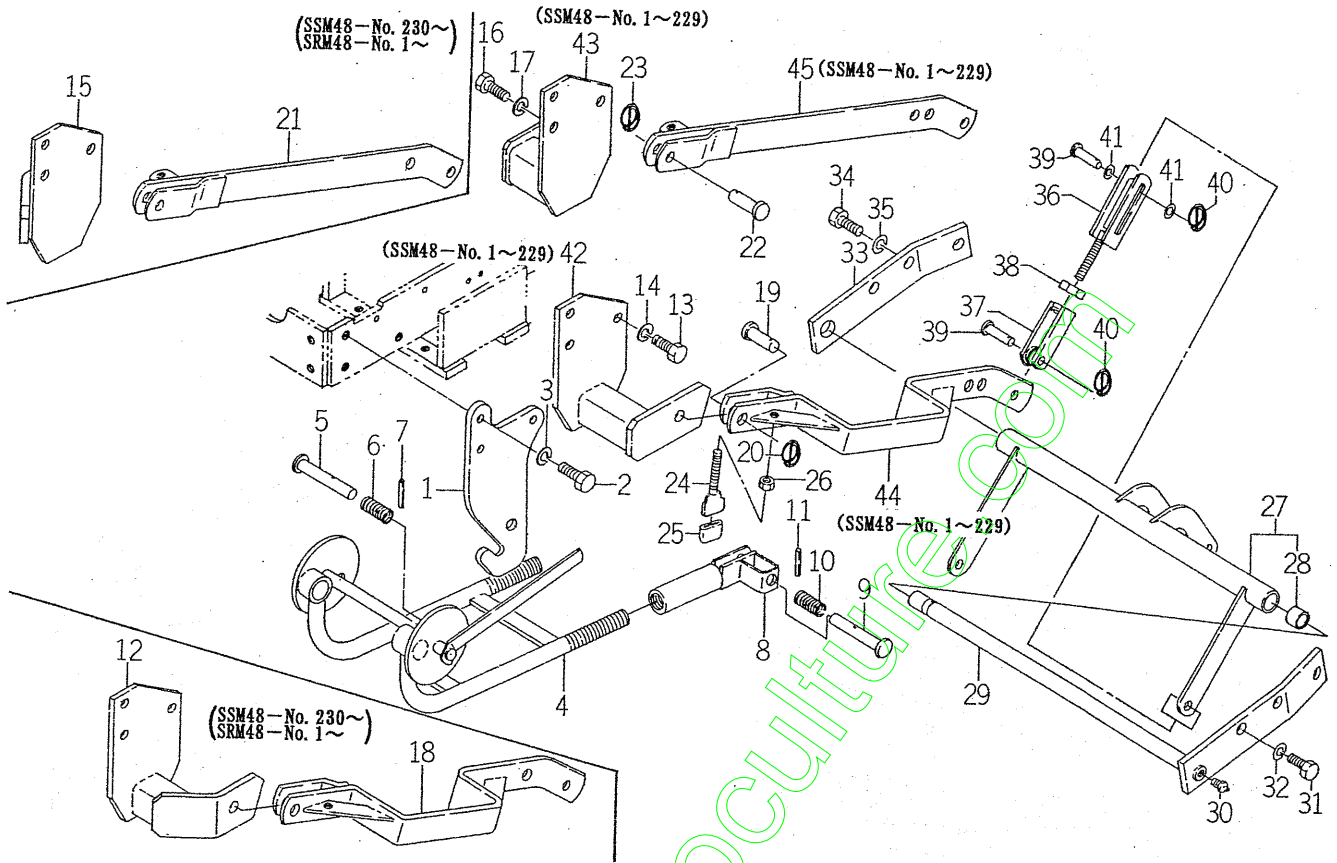
8595-501A

KEY	PART CODE	DESCRIPTION	S P C	TYPE OF MODEL						I T C	C O L	G R P	REMARKS
				SSM48M	SSM48F	SSM48G	SRM48M	SRM48F	SRM48G				
1	8595-501-310-00	FORK/WHEEL ASSY	*		2			2					
2	8654-501-201-00	BUSH/30X34X20	*		1			4					
3	3670-701-010-00	WASHER/30X50X05	*		2			2					
4	V704-140-030-00	RING, SNAP/30 C	*		2			2					
5	1427-432-005-00	COLLAR, THRUST	*		2			2					
6	V760-150-000-00	NIPPLE, GREASE	*		2			2					
7	8595-501-280-00	PIN/GAUGE COMP	*		2			2					
8	2144-106-005-00	PIN/10X53	*		2			2					
9	8654-501-006-10	SPRING/CLIP	*		2			2					
10	8595-501-320-00	WHEEL/GAUGE ASSY	*		2			2					
11	8595-501-350-00	WHELL ASSY	*		2			2					
12	8595-501-360-00	TIRE/8X3.00-4 ASSY	*		2			2					
13	8595-501-007-00	PIN/20X112	*		2			2					
14	V760-150-000-00	NIPPLE, GREASE	*		2			2					
15	V304-460-016-00	NUT/M16	*		2			2					
16	V401-160-016-00	WASHER, SP/M16	*		2			2					
17	8595-501-001-10	WHEEL/GAUGE/FRONT	*		1			1					
17	8595-501-001-10	WHEEL/GAUGE/FRONT	*				3		3				
17	8595-501-001-10	WHEEL/GAUGE/FRONT	*	4		4							
18	8595-501-006-00	PIN/12X119	*		1			1					
19	V362-260-008-00	NUT/WASHER	*		1			1					
19	V362-260-008-00	NUT/WASHER	*				3		3				
19	V362-260-008-00	NUT/WASHER	*	4		4							
20	V411-260-012-00	WASHER /M12	*	230-	2			2					
21	8595-501-001-10	WHEEL/GAUGE/FRONT	*		1								
22	8595-505-051-20	PIN/12X108	*		1								
22	8595-505-051-20	PIN/12X108	*				3		3				
22	8595-505-051-20	PIN/12X108	*	4		4							
23	V362-260-008-00	NUT/WASHER	*		1								
24	8595-501-240-00	ARM/GAUGE/LH COMP	*		1								





FIG. 13 LINK SYSTEM (M TYPE)

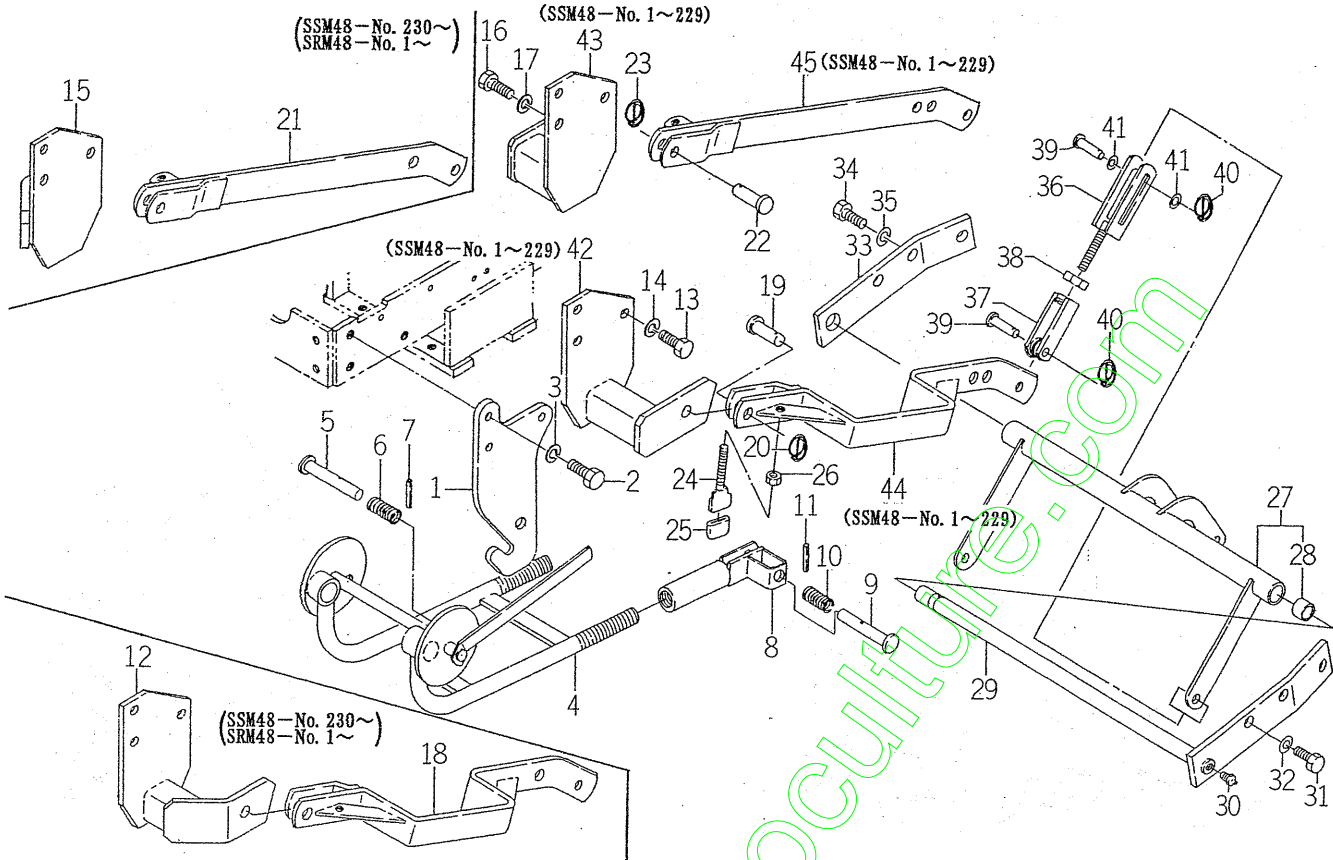


8597-608

KEY	PART CODE	DESCRIPTION	S P C	TYPE OF MODEL						I T C	C O L	G R P	REMARKS
				SSM48M	SSM48F	SSM48G	SRM48M	SRM48F	SRM48G				
1	8595-608-081-00	BRACKET/FRONT	*	2			2						
2	V201-361-203-00	BOLT/M12X30	*	6			6						
3	V401-160-012-00	WASHER, SP/M12	*	6			6						
4	8657-608-510-00	ARM/FRONT COMP	*	1			1						
5	8595-608-082-00	PIN/16X96	*	1			1						
6	1560-601-028-00	SPRING/HCO42	*	1			1						
7	V580-140-504-00	PIN, SPRING/5 X40 W	*	1			1						
8	8595-608-820-00	HITCH/ARM COMP	*	2			2						
9	8595-608-082-00	PIN/16X96	*	2			2						
10	1560-601-028-00	SPRING/HCO42	*	2			2						
11	V580-140-504-00	PIN, SPRING/5 X40 W	*	2			2						
12	8657-608-850-00	BRACKET/MID/LH COMP	*	1 230-			1						
13	V203-361-003-50	BOLT	*	3 5			3						
14	V401-160-010-00	WASHER, SP/M10	*	3			3						
15	8657-608-860-00	BRACKET/MID/RH COMP	*	1 230-			1						
16	V203-361-003-50	BOLT	*	3			3						
17	V401-160-010-00	WASHER, SP/M10	*	3			3						
18	8597-608-510-00	ARM/MID/LH COMP	*	1 230-			1						
19	8657-608-052-00	PIN/16X43	*	1			1						
20	1427-317-003-00	CLIP, PIN	*	1			1						
21	8597-608-520-00	ARM/MID/RH COMP	*	1 230-			1						
22	8657-608-052-00	PIN/16X43	*	1			1						
23	1427-317-003-00	CLIP, PIN	*	1			1						
24	8595-608-870-00	STOPPER COMP	*	2			2						
25	1593-101-012-00	STOPPER	*	2			2						
26	V304-260-012-00	NUT/M12	*	2			2						
27	8657-608-560-10	LINK/REAR ASSY	*	1			1						
28	8654-501-283-00	BUSH/22X25X25	*	2			2						
29	8657-608-580-10	BRACKET/REAR/LH COMP	*	1			1						
30	V762-150-000-00	NIPPLE, GREASE/B-M6F	*	2			2						



FIG. 13 LINK SYSTEM (M TYPE)



8697-608

KEY	PART CODE	DESCRIPTION	S P C	TYPE OF MODEL						I T C	C O L	G R P	REMARKS
				SSM48M	SSM48F	SSM48G	SRM48M	SRM48F	SRM48G				
31	V201-361-203-00	BOLT/M12X30	*	2			2						
32	V401-160-012-00	WASHER, SP/M12	*	2			2						
33	8657-608-051-10	BRACKET/REAR/RH	*	1			1						
34	V201-361-203-00	BOLT/M12X30	*	2			2						
35	V401-160-012-00	WASHER, SP/M12	*	2			2						
36	8657-608-590-10	FORK/A	COMP	*	2		2						
37	8657-608-610-10	FORK/B	COMP	*	2		2						
38	V304-260-016-00	NUT/M16	*	2			2						
39	8657-608-053-10	PIN/12X42	*	4			4						
40	1427-317-003-00	CLIP, PIN	*	4			4						
41	V411-260-012-00	WASHER /M12	*	4			4						
42	8657-608-520-00	BRACKET/MID/LH	COMP	*	1 -229								
43	8657-608-530-00	BRACKET/MID/RH	COMP	*	1 -229								
44	8657-608-540-00	ARM/MID/LH	COMP	*	1 -229								
45	8657-608-550-00	ARM/MID/RH	COMP	*	1 -229								





## NUMERICAL INDEX

8595-097-100-10

PART CODE	FIG. KEY	PART CODE	FIG. KEY	PART CODE	FIG. KEY
K182-002-002-00	14 6	V363-260-008-00	9 10	V704-140-016-00	5 13
K182-032-000-00	14 4		9 12	V704-140-017-00	5 12
K182-032-001-00	14 5		11 40	V704-140-030-00	11 4
K182-032-002-00	14 7	V363-260-010-00	11 47	V705-140-040-00	6 30
K182-032-003-00	14 8	V401-160-008-00	4 6	V705-140-047-00	3 9
V201-260-803-00	9 7		6 37		6 31
V201-260-807-50	4 5	V401-160-010-00	3 24	V705-140-052-00	4 10
V201-260-808-00	4 5A		4 32		6 6
V201-361-203-00	13 2		13 14		6 19
	13 31		13 17	V707-140-055-00	2 20
	13 34	V401-160-012-00	12 9		3 15
	14 2		13 3		4 27
V203-361-003-50	13 13		13 32	V707-140-062-00	2 9
	13 16		13 35		4 10A
V210-260-601-20	6 26		14 3		6 10
V211-260-801-60	2 5	V401-160-014-00	6 35		6 23
	3 6	V401-160-016-00	5 7	V720-101-900-90	12 12
V211-260-802-00	9 3		11 16	V721-103-108-00	2 6
V211-260-803-00	4 4	V401-160-020-00	7 11	V744-125-470-80	3 8
V211-261-002-50	6 2	V411-260-012-00	11 20	V744-125-521-00	4 9
	6 13		12 7	V744-130-551-20	2 21
	11 26		13 41		3 16
V211-360-802-00	3 5	V411-260-014-00	3 22	V744-135-520-80	6 8
	3 25		4 33		6 21
V211-361-002-00	4 30	V411-260-016-00	5 20	V760-150-000-00	5 15
V211-561-002-00	2 3		11 38		6 11
	2 24		12 8		6 14
V304-260-008-00	5 18	V411-260-022-00	11 33		11 6
	6 36	V500-163-002-50	11 39		11 14
	9 8	V523-100-801-80	4 3		11 34
V304-260-010-00	3 23	V580-140-504-00	8 4	V762-150-000-00	13 30
	4 31		11 32	V781-160-000-40	3 4
	6 16		13 7	1342-402-006-00	14 15
V304-260-012-00	13 26		13 11	1421-502-002-00	12 2
V304-260-016-00	13 38	V580-140-604-00	1 12	1427-317-003-00	11 29
V304-460-012-00	12 10	V580-140-804-00	1 31		12 13
V304-460-014-00	6 34	V600-110-600-50	4 21		13 20
	7 4	V600-110-600-60	2 19		13 23
V304-460-016-00	5 8		4 24		13 40
	11 15	V600-110-630-30	3 13		14 12
V362-260-008-00	10 5	V600-110-630-40	2 14	1427-432-005-00	11 5
	10 7		4 22	1434-211-004-00	5 3
	11 19	V600-110-690-80	6 5	1560-275-012-00	5 10
	11 23		6 18	1560-285-006-20	11 43
V363-260-008-00	9 5	V600-111-600-60	3 14	1560-601-028-00	8 3

PART CODE	FIG. KEY	PART CODE	FIG. KEY	PART CODE	FIG. KEY
1560-601-028-00	13 6	8595-201-016-00	2 15	8595-301-013-10	6 25
	13 10	8595-201-017-00	2 16	8595-301-031-00	6 38
1593-101-012-00	13 25	8595-201-021-00	2 17	8595-301-510-40	3 20
1593-901-015-00	15 10	8595-201-022-00	2 18	8595-301-520-00	6 27
1594-218-001-00	2 8	8595-201-023-00	2 22	8595-305-011-00	7 3
1594-221-001-00	4 11	8595-201-024-00	2 25	8595-305-012-00	7 6
	4 25	8595-201-025-00	2 10	8595-306-002-00	7 1
	6 4	8595-201-052-20	3 2	8595-306-004-00	7 7
	6 17	8595-201-053-20	3 3	8595-306-005-00	7 8
1608-206-240-00	14 9	8595-201-054-10	3 7	8595-306-006-00	7 9
1608-206-241-00	14 10	8595-201-058-00	3 1	8595-306-007-00	7 10
1650-219-009-00	4 11A	8595-201-059-00	3 12	8595-306-061-00	7 5
1682-408-220-00	14 13	8595-201-069-10	3 17	8595-402-220-00	8 7
2144-106-005-00	11 8	8595-201-071-00	3 18	8595-402-260-00	8 9
2149-602-012-00	10 2	8595-201-081-00	3 19	8595-402-810-21	8 1
	10 4	8595-201-250-00	2 11	8595-402-810-30	8 1A
2500-901-014-30	15 6	8595-201-270-00	3 11	8595-405-600-00	9 1
2500-901-027-00	15 1	8595-202-500-30	5 19	8595-405-610-00	9 2
3621-211-003-00	5 14	8595-202-520-10	5 9	8595-406-210-50	9 14
3670-701-010-00	11 3	8595-203-002-20	5 21	8595-406-220-00	9 4
3737-341-006-00	5 16	8595-203-003-00	5 22	8595-407-003-00	10 6
3737-341-007-00	5 17	8595-211-001-20	4 1	8595-407-220-00	10 1
	9 15	8595-211-002-10	4 2	8595-407-230-00	10 3
3746-111-011-00	5 6	8595-211-003-10	4 8	8595-407-240-00	10 16
3768-112-001-00	9 6	8595-211-003-20	4 8A	8595-407-250-00	10 17
3768-185-022-10	14 14	8595-211-004-10	4 13	8595-407-810-00	10 12
7955-201-026-00	2 2	8595-211-004-20	4 13A	8595-407-810-10	10 12A
	4 7	8595-211-005-10	4 14	8595-407-820-00	10 13
7957-405-003-00	12 5	8595-211-006-30	4 20	8595-407-820-10	10 13A
8593-014-200-10	5 11	8595-211-007-20	4 23	8595-501-001-10	11 17
8595-101-400-00	1 26	8595-211-008-20	4 28		11 21
8595-101-411-00	1 27	8595-211-009-10	4 29	8595-501-005-20	11 46
8595-101-412-00	1 3	8595-211-010-00	4 15	8595-501-006-00	11 18
8595-101-421-00	1 28	8595-211-018-00	4 16	8595-501-007-00	11 13
8595-101-422-00	1 8	8595-211-019-00	4 17	8595-501-008-00	11 37
8595-101-450-00	1 1	8595-211-021-00	4 18	8595-501-240-00	11 24
8595-101-461-00	1 2	8595-211-022-00	4 19	8595-501-250-00	11 25
8595-101-471-00	1 7	8595-211-023-00	4 9A	8595-501-280-00	11 7
8595-101-510-00	1 29	8595-211-024-00	4 26	8595-501-310-00	11 1
8595-201-009-00	3 10	8595-211-200-20	4 12	8595-501-320-00	11 10
8595-201-011-00	2 1	8595-301-005-30	6 32	8595-501-330-00	11 35
8595-201-012-00	2 4	8595-301-007-10	4 34	8595-501-340-00	11 36
8595-201-013-00	2 7	8595-301-009-00	6 29	8595-501-350-00	11 11
8595-201-014-20	2 12	8595-301-011-00	6 28	8595-501-360-00	11 12
8595-201-015-00	2 13	8595-301-012-00	6 33	8595-501-500-30	11 41

8595-097-100-10

PART CODE	FIG. KEY	PART CODE	FIG. KEY	PART CODE	FIG. KEY
8595-501-510-00	11 42	8597-407-530-00	10 9	8657-608-051-10	13 33
8595-505-002-00	11 28	8597-501-310-00	11 44	8657-608-052-00	13 19
8595-505-051-20	11 22	8597-501-320-00	11 45		13 22
8595-510-002-00	12 6	8597-608-510-00	13 18	8657-608-053-10	13 39
8595-510-004-00	12 1	8597-608-520-00	13 21	8657-608-510-00	13 4
8595-510-019-00	12 3	8654-101-212-00	1 20	8657-608-520-00	13 42
8595-510-023-00	12 11	8654-101-221-00	1 30	8657-608-530-00	13 43
8595-608-081-00	13 1	8654-101-222-00	1 19	8657-608-540-00	13 44
8595-608-082-00	8 2	8654-101-230-00	1 4	8657-608-550-00	13 45
	13 5		1 9	8657-608-560-10	13 27
	13 9	8654-101-232-00	1 5	8657-608-580-10	13 29
8595-608-083-00	12 4		1 10	8657-608-590-10	13 36
8595-608-820-00	13 8	8654-101-233-00	1 6	8657-608-610-10	13 37
8595-608-870-00	13 24		1 11	8657-608-850-00	13 12
8595-901-005-00	15 3	8654-202-016-00	5 2	8657-608-860-00	13 15
8595-901-006-00	15 4		5 5	8657-610-051-00	14 11
8595-901-007-00	15 5	8654-301-004-00	6 7	8657-610-510-20	14 1
8595-901-008-00	15 7		6 20		
8595-903-081-00	15 9	8654-501-006-10	11 9		
8597-101-500-00	1 14	8654-501-201-00	11 2		
8597-101-501-00	1 16	8654-501-283-00	11 31		
8597-101-502-00	1 17		13 28		
8597-101-510-00	1 18	8654-901-001-00	15 2		
8597-201-001-00	2 23	8654-901-002-00	15 8		
8597-201-051-00	4 28A	8657-101-500-00	1 21		
8597-201-052-00	4 35	8657-101-501-00	1 15		
8597-201-053-00	4 23A	8657-101-502-00	1 22		
8597-202-500-00	5 9A	8657-101-503-00	1 23		
8597-202-501-00	5 10A	8657-101-510-00	1 24		
8597-301-001-00	3 26	8657-101-511-00	1 25		
8597-301-002-00	3 21	8657-201-081-00	4 1A		
	4 34A	8657-201-082-00	4 8B		
8597-306-001-00	7 12	8657-201-083-00	4 9B		
8597-306-002-00	7 13	8657-202-001-00	5 1		
8597-402-230-00	8 8		5 4		
8597-402-310-10	8 6	8657-301-004-00	6 1		
8597-402-510-00	8 5	8657-301-005-00	6 12		
8597-406-001-00	9 11	8657-301-006-20	6 3		
8597-406-200-20	9 9	8657-301-007-00	6 9		
8597-406-210-00	9 13		6 22		
8597-407-220-00	10 14	8657-301-008-00	6 24		
8597-407-230-00	10 15	8657-301-009-00	6 15		
8597-407-310-00	10 10	8657-306-002-00	7 2		
8597-407-320-00	10 11	8657-501-530-00	11 30		
8597-407-520-00	10 8	8657-501-540-00	11 27		



DESCRIPTION	REF . NO	DESCRIPTION	REF . NO	DESCRIPTION	REF . NO	DESCRIPTION	REF . NO	DESCRIPTION	REF . NO
NUT/M12	13	PLATE/I/100X135	26	SEAL,OIL/TC35528	3	SHAFT YOKE	26	STOPPER,PISTON	14
NUT/M14	6	PLATE/I/25X64	9	SHAFT YOKE ASSY	9	SHAFT/INPUT	13	SURCLIP/HOLE	1
NUT/M16	7	PLATE/L/105X64	4	SHAFT/BRADE	4	SHAFT/COUNTER	29	TIRE/8X3.00-4	1
	5	PLATE/L/130X109	4	SHAFT/BRADE	4	SHAFT/INPUT	28	WASHER	11
	11	PLATE/L/60X62	4	SHAFT/BRADE	4	SHAFT/INPUT	15	WASHER / M16	12
	13	PLATE/L/60X65	2	SHAFT/BRADE	2	SHAFT/OUTPUT	23	WASHER / M16	5
NUT/M20X1.5	7	PLATE/L/60X65	2	SHAFT/BRADE	2	SHAFT/OUTPUT	13	WASHER / M16	5
NUT/WASHER	10	PLATE/L/65XX55	9	SHAFT/BRADE	9	SHAFT/OUTPUT	13A	WASHER / M12	11
	10	PLATE/L/75X65	2	SHAFT/BRADE	2	SHAFT/OUTPUT	8	WASHER / M12	12
	11	PLATE/STAY	4	SHAFT/BRADE	4	SHAFT/OUTPUT	8A	WASHER / M12	11
	11	PLUG/SCREW	3	SHAFT/BRADE	3	SHAFT/OUTPUT	7	WASHER / M12	12
	23	PLUG, DRAIN (1/4)	4	SHAFT/BRADE	4	SHAFT/OUTPUT	8B	WASHER / M12	12
NUT, LOCK/M8	9	PULLEY COMP	2	SHAFT/BRADE	2	SHAFT/OUTPUT	12	WASHER / M12	13
	9	PULLEY COMP	4	SHAFT/BRADE	4	SHAFT/OUTPUT	12	WASHER / M12	13
	12	PULLEY COMP	5	SHAFT/BRADE	5	SHAFT/OUTPUT	12	WASHER / M12	13
	11	PULLEY/VB125	5	SHAFT/BRADE	5	SHAFT/OUTPUT	12	WASHER / M12	13
	11	PULLY/VB120	5	SHAFT/BRADE	5	SHAFT/OUTPUT	12	WASHER / M12	13
	12	RING/SNAP	5	SHAFT/BRADE	5	SHAFT/OUTPUT	12	WASHER / M12	13
	4	RING/SNAP	6	SHAFT/BRADE	6	SHAFT/OUTPUT	12	WASHER / M12	13
	4	RING/SNAP	6	SHAFT/BRADE	6	SHAFT/OUTPUT	12	WASHER / M12	13
	7	RING/SNAP	9	SHAFT/BRADE	9	SHAFT/OUTPUT	15	WASHER / M12	4
PIN/GAUGE	11	RING/SNAP	2	SHAFT/BRADE	2	SHAFT/OUTPUT	15	WASHER / M12	4
PIN/08X44	11	RING/SNAP	2	SHAFT/BRADE	2	SHAFT/OUTPUT	15	WASHER / M12	4
PIN/10X53	11	RING/SNAP	2	SHAFT/BRADE	2	SHAFT/OUTPUT	15	WASHER / M12	4
PIN/12X108	11	RING/SNAP	3	SHAFT/BRADE	3	SHAFT/OUTPUT	15	WASHER / M12	4
PIN/12X119	11	RING/SNAP	3	SHAFT/BRADE	3	SHAFT/OUTPUT	15	WASHER / M12	4
PIN/12X119	11	RING/SNAP	3	SHAFT/BRADE	3	SHAFT/OUTPUT	15	WASHER / M12	4
PIN/12X42	13	RING/SNAP	4	SHAFT/BRADE	4	SHAFT/OUTPUT	15	WASHER / M12	4
PIN/12X83	12	RING/SNAP	6	SHAFT/BRADE	6	SHAFT/OUTPUT	15	WASHER / M12	4
PIN/15X88	14	RING/SNAP	6	SHAFT/BRADE	6	SHAFT/OUTPUT	15	WASHER / M12	4
PIN/16X33	11	RING/SNAP	5	SHAFT/BRADE	5	SHAFT/OUTPUT	15	WASHER / M12	4
PIN/16X43	13	RING/SNAP	5	SHAFT/BRADE	5	SHAFT/OUTPUT	15	WASHER / M12	4
PIN/16X43	13	RING/SNAP	5	SHAFT/BRADE	5	SHAFT/OUTPUT	15	WASHER / M12	4
PIN/16X65	12	RING/SNAP	6	SHAFT/BRADE	6	SHAFT/OUTPUT	15	WASHER / M12	4
PIN/16X94	11	RING/SNAP	6	SHAFT/BRADE	6	SHAFT/OUTPUT	15	WASHER / M12	4
PIN/16X96	8	RING/SNAP	6	SHAFT/BRADE	6	SHAFT/OUTPUT	15	WASHER / M12	4
	13	RING/SNAP	6	SHAFT/BRADE	6	SHAFT/OUTPUT	15	WASHER / M12	4
	13	RING/SNAP	6	SHAFT/BRADE	6	SHAFT/OUTPUT	15	WASHER / M12	4
	13	RING/SNAP	6	SHAFT/BRADE	6	SHAFT/OUTPUT	15	WASHER / M12	4
PIN/19X135	12	ROD PACKING	14	SLEEVE YOKE	1	SLEEVE YOKE	23	WASHER, SP/M14	6
PIN/20X112	11	ROD, CHAIN TENSION	5	SLEEVE YOKE	1	SLEEVE YOKE	23	WASHER, SP/M16	5
PIN, HAIR	12	SEAL/OIL	9	SLEEVE YOKE	1	SLEEVE YOKE	23	WASHER, SP/M16	5
PIN, LINK	12	SEAL/OIL	2	SLEEVE YOKE	1	SLEEVE YOKE	23	WASHER, SP/M16	5
PIN, SPLIT/3 X25	11	SEAL/OIL	2	SLEEVE YOKE	1	SLEEVE YOKE	23	WASHER, SP/M16	5
PIN, SPRING/5 X40 W	8	SEAL/OIL	4	SLEEVE YOKE	1	SLEEVE YOKE	23	WASHER, SP/M16	5
	11	SEAL/OIL	4	SLEEVE YOKE	1	SLEEVE YOKE	23	WASHER, SP/M16	5
	13	SEAL/OIL	4	SLEEVE YOKE	1	SLEEVE YOKE	23	WASHER, SP/M16	5
	13	SEAL/OIL	4	SLEEVE YOKE	1	SLEEVE YOKE	23	WASHER, SP/M16	5
PIN, SPRING/6 X40 W	1	SEAL,OIL/TC25478	6	SPRING, CHAIN TENSION	5	SPRING, CHAIN TENSION	16	WASHER, SP/M12	13
PIN, SPRING/8 X40 W	1	SEAL,OIL/TC255210	3	SPRING, CLUTCH RETURN	9	SPRING, CLUTCH RETURN	6	WASHER, SP/M12	13
PIPE/GREASE	6	SEAL,OIL/TC305512	15	STOPPER	13	STOPPER	25	WASHER, SP/M12	13
PISTON	14	SEAL,OIL/TC305512	5	STOPPER	13	STOPPER	24	WASHER, SP/M12	13
PLATE/I-108X112	3	SEAL,OIL/TC35528	2	STOPPER/LH	9	STOPPER/RH	1	WASHER, SP/M10	3
	3	SEAL,OIL/TC35528	2	STOPPER/RH	9	STOPPER/RH	2	WASHER, SP/M10	3







**Yvan Béal - 21, av. de l'Agriculture - B.P. 16  
Z.I. du Brézet - 63014 Clermont-Ferrand Cedex 2  
Tél : 04 73 91 93 51 - Télécopie : 04 73 90 23 11  
www.yvanbeal.fr - E-mail : info@yvanbeal.fr  
R.C.S. Clermont-Fd B 304 973 886 - S.A.S. au capital de 612 000 €**