



PIÈCES DÉTACHÉES

Motobineuse



YB56IN

(2009)

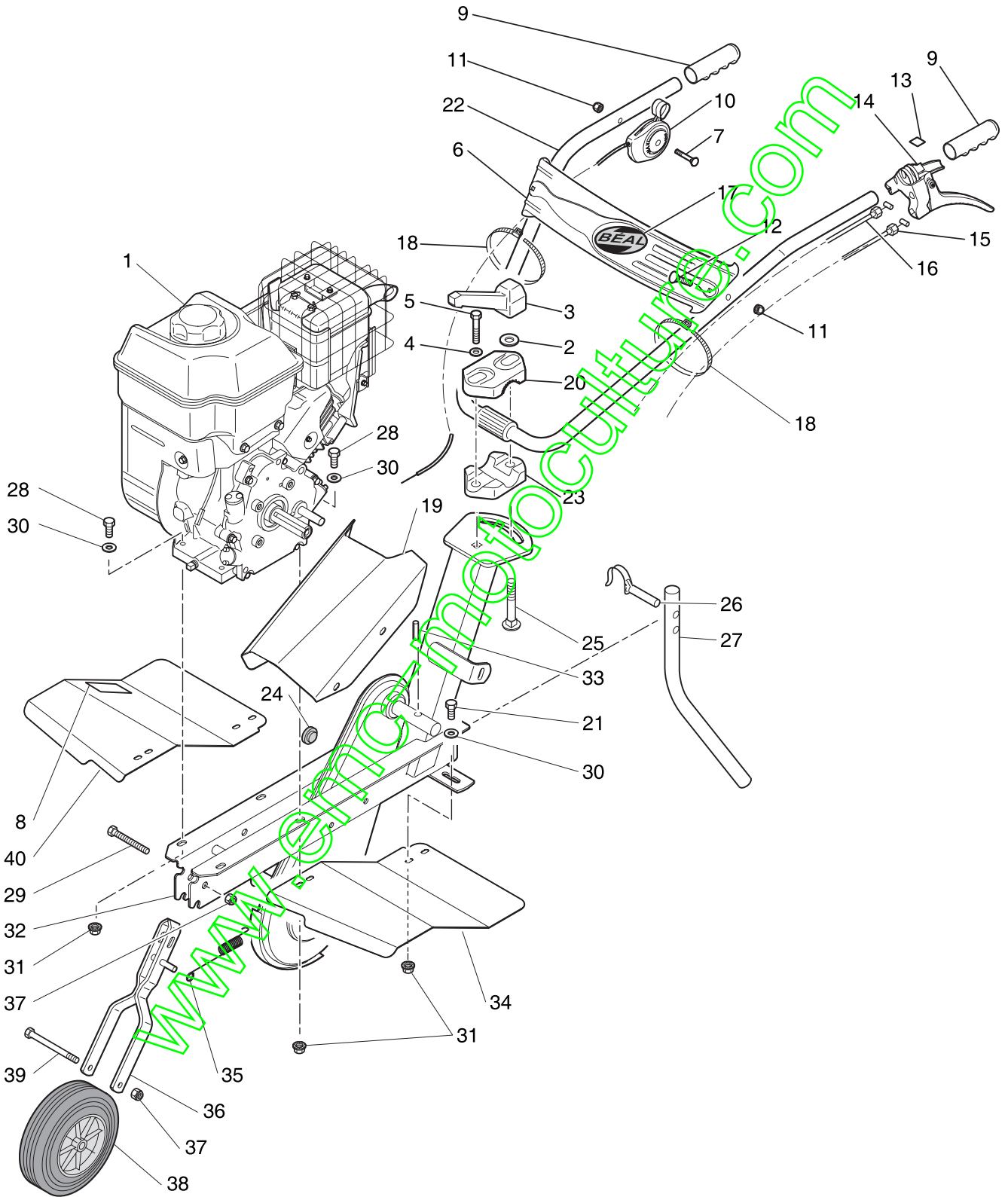


Yvan Béal - 21, av. de l'Agriculture - B.P. 16
Z.I. du Brézet - 63014 Clermont-Ferrand Cedex 2
Tél : 04 73 91 93 51 - Télécopie : 04 73 90 23 11
www.yvanbeal.fr - E-mail : info@yvanbeal.fr
R.C.S. Clermont-Fd B 304 973 886 S.A.S. au capital de 612 000 €

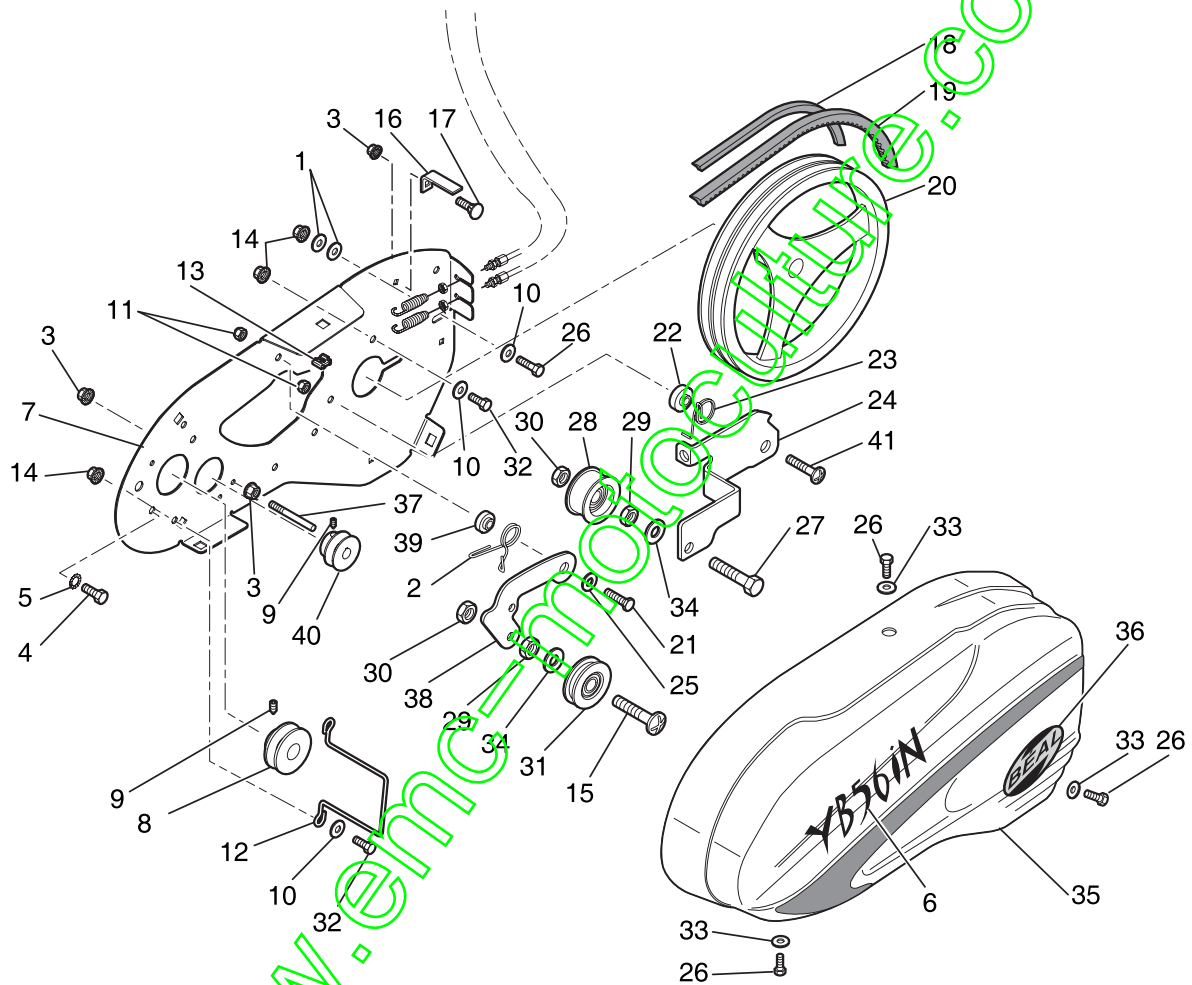
03-000980-090316

www.emc-motoculture.com

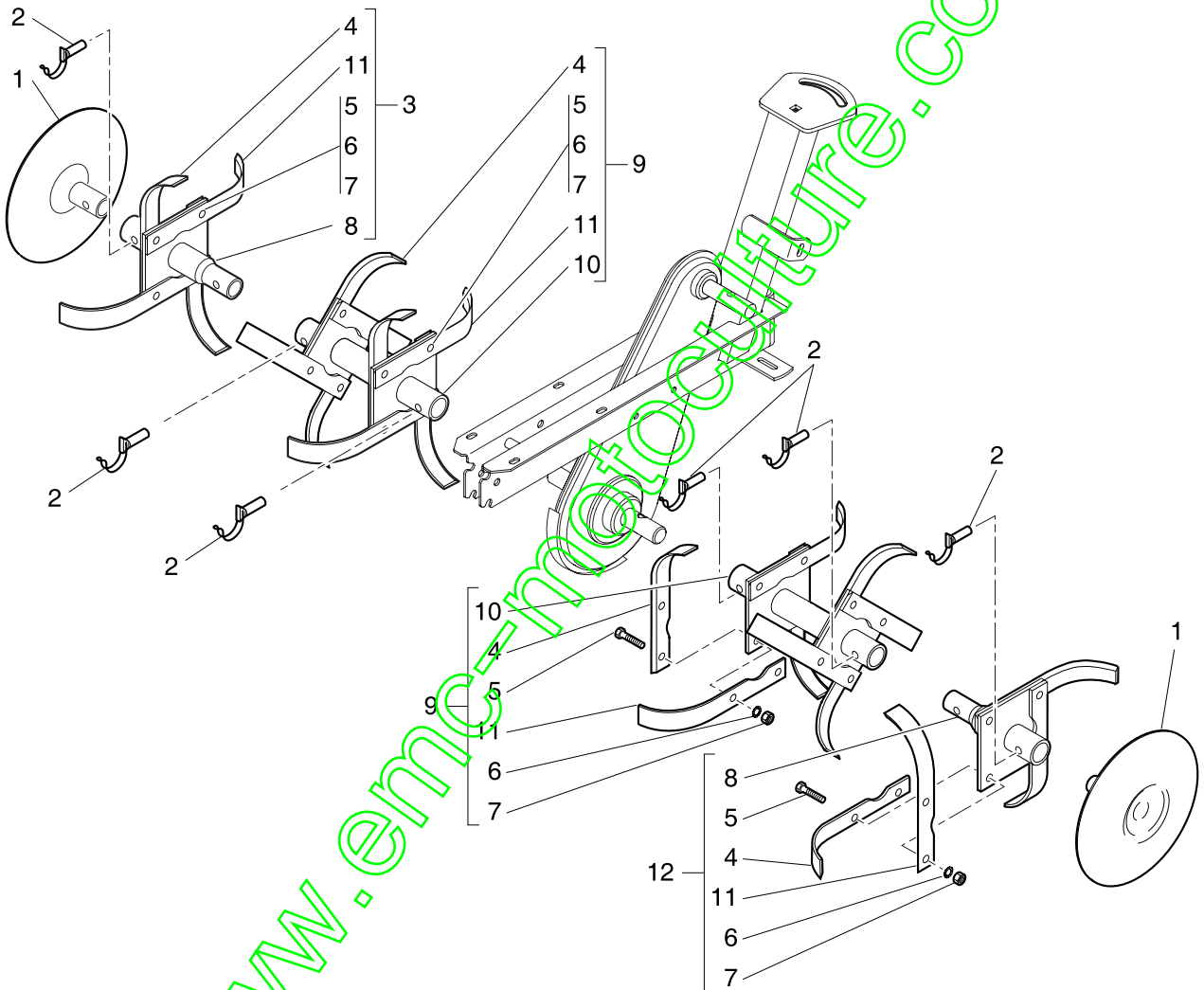
www.emc-motoculture.com



REP.	REFERENCE Y.BEAL	REFERENCE FORGES	DESIGNATION	Q'TE
1		FSMOT55B	MOTEUR 5,5 CV INTEK	1
2		QSMU12Z	RONDELLE PLATE M12	1
3		FSMANET09	POIGNEE DE SERRAGE	1
4		QSMU10Z	RONDELLE M10	1
5		QSTH10080PZ8	VIS TH 10x80 CL8.8ZN	1
6		540761	TRAVERSE DE GUIDON	1
7		QSTRCC0655	VIS TRCC M6x55	1
8		407130	ETIQUETTE SECURITE	1
9		FSPOI06	POIGNEE	2
10		FSMANET11	MANETTE DE GAZ + CABLE START BS	1
11		QSHF06Z	ECROU BAGUE NYLON M6	3
12		QSTRCC0635	VIS TRCC M6x35	2
13		FDET460580	ETIQUETTE "M.AV. - M.AR."	1
14		FSLEV41	LEVIER DOUBLE Ø25	1
15		406490	CABLE D'EMBAYAGE M.AV.	1
16		406500	CABLE D'EMBAYAGE M.AR.	1
17		FDET405530	ETIQUETTE LOGO BEAL	1
18		FSCOL140	COLLIER	2
19		208731	CAPOT DE POTENCE	1
20		464111	BRIDE CRANTEE	1
21		QSTH08020EZ8	VIS H M8x20 CL8.8	2
22		202713	GUIDON	1
23		201913	BRIDE LISSE	1
24		FSBOU16231	BOUCHON	1
25		QSTRCC1280	VIS TRCC M12x80	1
26		GO0738	GOUPILLE Ø7x38	1
27		402341	EPERON	1
28		QSTH08035EZ8	VIS H M8x35 CL8.8	4
29		QSTH10045EZ8	VIS H M10x45 CL8.8	1
30		QSMU08Z	RONDELLE PLATE M8	6
31		QSHE08Z	ECROU A EMBASE CRANTEE H M8	6
32		208051	CHASSIS	1
33		QSGM0630	GOUPILLE ELASTIQUE Ø6x30E	1
34		540771	AILE GAUCHE	1
35		FP401060	RESSORT DE ROUE AVANT	1
36		401946	SUPPORT DE ROUE AVANT	1
37		QSHF10Z	ECROU BAGUE NYLON H M10	2
38		FSROU206	ROUE	1
39		QSTH10090PZ8	VIS H M10x90/26 CL8.8	1
40		540781	AILE DROITE	1



REP.	REFERENCE Y.BEAL	REFERENCE FORGES	DESIGNATION	Q'TE
1		QSMU10Z	RONDELLE PLATE M10x22x2Zn	2
2		FP207140	RESSORT M.AR.	1
3		QSHE06Z	ECROU EMBASE CRANTEE H M6	3
4		QSUNF5/16x5/8	VIS H 5/16x5/8 24 UNF CL8.8	2
5		QSMA08Z	RONDELLE EVENTAIL AZ08	2
6		541240	ETIQUETTE BEAL "YB56IN"	1
7		208961	PLATINE	1
8		FP400431	POULIE M.AV.	1
9		QSST08010BU	VIS ST HC M8x10 BOUT POINTU	2
10		QSMU08Z	RONDELLE PLATE M8	4
11		QSHS08Z8	ECROU FREIN H M8 NF25410	2
12		FP208260	BUTEE DE COURROIE	1
13		QSHCR08	ECROU CAGE M8	3
14		QSHE08Z	ECROU EMBASE CRANTEE H M8	4
15		QSTL1230	VIS RL12x30	1
16		470882	BUTEE DE COURROIE	1
17		QSTRCC0616	VIS TRCC M6x16	1
18		FSCOUZ38	COURROIE M.AR.	1
19		FSCOUA44	COURROIE M.AV.	1
20		FP406080	POULIE DOUBLE	1
21		QSTH08025EZ8	VIS HM8x25 CL8.8	1
22		FP400511	ENTRETOISE M.AV.	1
23		FP400220	RESSORT M.AV.	1
24		202831	BASCULOT M.AV.	1
25		FP400381	RONDELLE 20x8,2x2,4	1
26		QSTH08020EZ8	VIS H M08x20 CL8.8	4
27		QSTH12030EZ8	VIS H M12x30 CL8.8	1
28		FP402050	GALET PLASTIC SIMPLE H20	1
29		QSHU12Z8	ECROU H M12	2
30		QSHM12Z	ECROU BAS Hm M12	2
31		FP408020	GALET PLASTIC D44x17	1
32		QSTH08016EZ8	VIS TH8x16	4
33		QSM108Z	RONDELLE PLATE L08x22x1,5	3
34		QSMZ12Z	RONDELLE PLATE Z12	2
35		540810	CAPOT DE COURROIE	1
36		FDET405530	ETIQUETTE LOGO BEAL	1
37		FP225590	BUTEE DE COURROIE M.AR.	1
38		202911	BASCULOT M.AR.	1
39		FP400521	ENTRETOISE M.AR.	1
40		FP202621	POULIE M.AR.	1
41		QSTL08025	VIS RL8x25	1



REP.	REFERENCE Y.BEAL	REFERENCE FORGES	DESIGNATION	Q'TE
1		431321	DISQUE D 202	2
2		GO1034	GOUPILLE FM 10X34	6
3		432620	ETOILE ADDITIONNELLE DROITE	1
4		3TS325GN	COUTEAU STANDARD GAUCHE	12
5		QSTH08025EZ8	VIS H M8x25	24
6		QSMA08Z	RONDELLE EVENTAIL M8	24
7		QSHU08Z	ECROU H M8	24
8		432631	MOYEU ADDITIONNEL	2
9		432590	ETOILE DEPART	2
10		432601	DEPART MONOBLOC	2
11		3TS325DN	COUTEAU STANDARD DROIT	12
12		432610	ETOILE ADDITIONNELLE GAUCHE	1

www.emc-motoculture.com

Moteur

www.emc-motoculture.com



Illustrated Parts List

Model Series

126300

TYPE NUMBERS
0023 through 3776.

TABLE OF CONTENTS

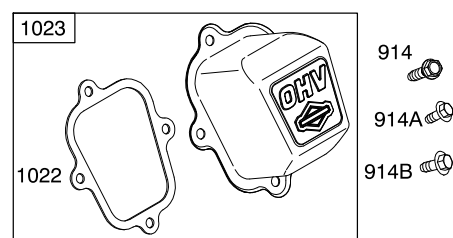
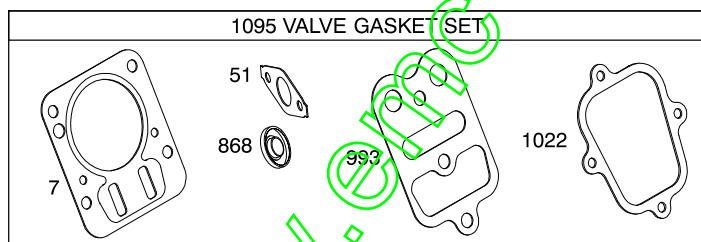
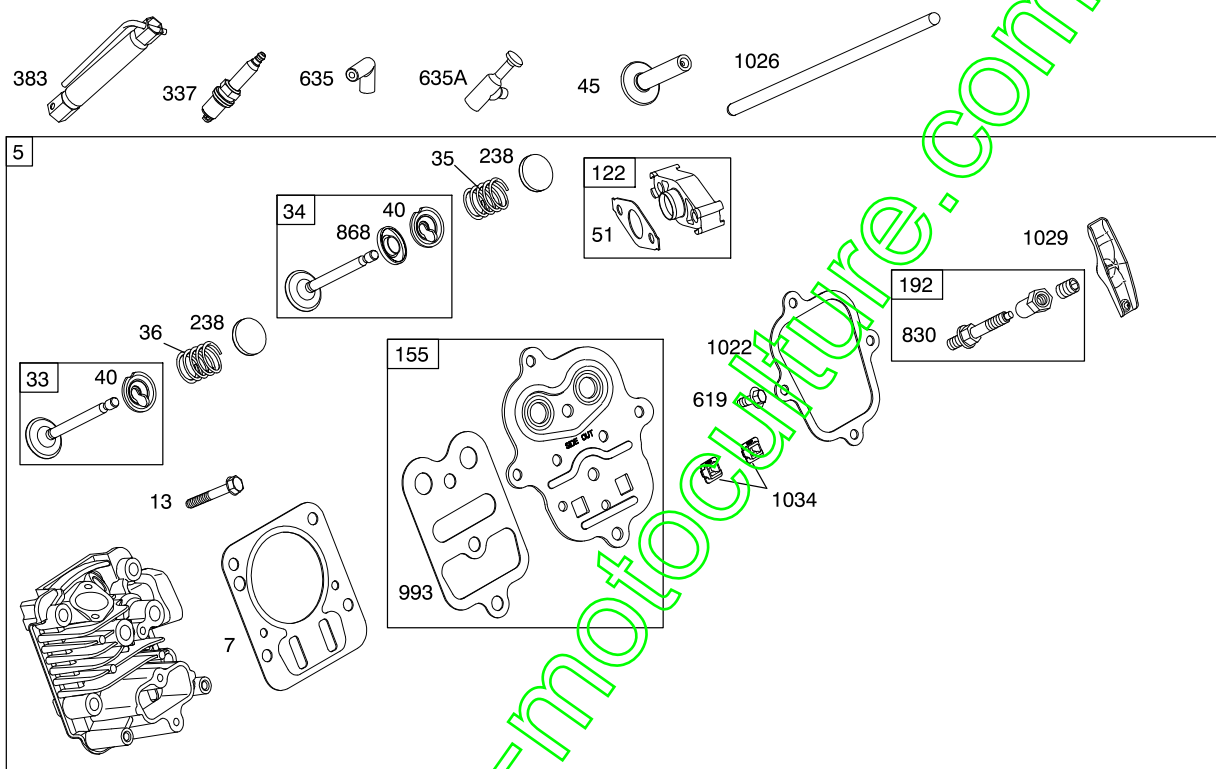
Air Cleaner	6
Blower Housing	7
Camshaft	2
Carburetor	4
Controls	5
Crankcase Cover	2
Crankshaft	2
Cylinder	2
Cylinder Head	3
Electric Starter	5
Exhaust System	6
Flywheel	7
Fuel Supply	4
Gear Reduction	6
Governor Spring	5
Ignition	5
Kits/Gaskets - Carburetor	4
Kits/Gaskets - Engine	2
Kits/Gaskets - Valve	3
Lubrication	2
Piston Group	2
Rewind Starter	7

www.emc-motoculture.com

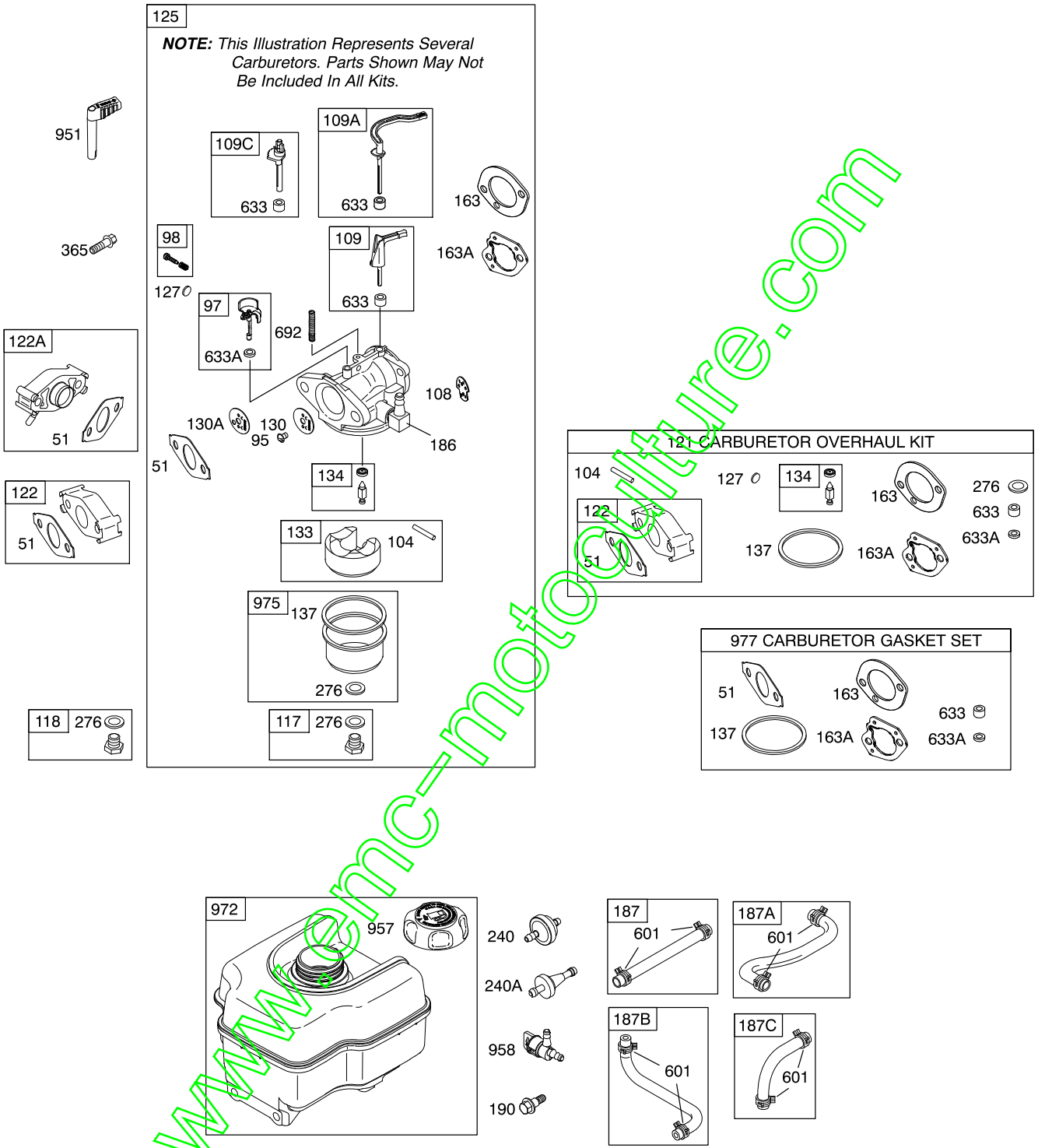


PRINTED IN U.S.A.

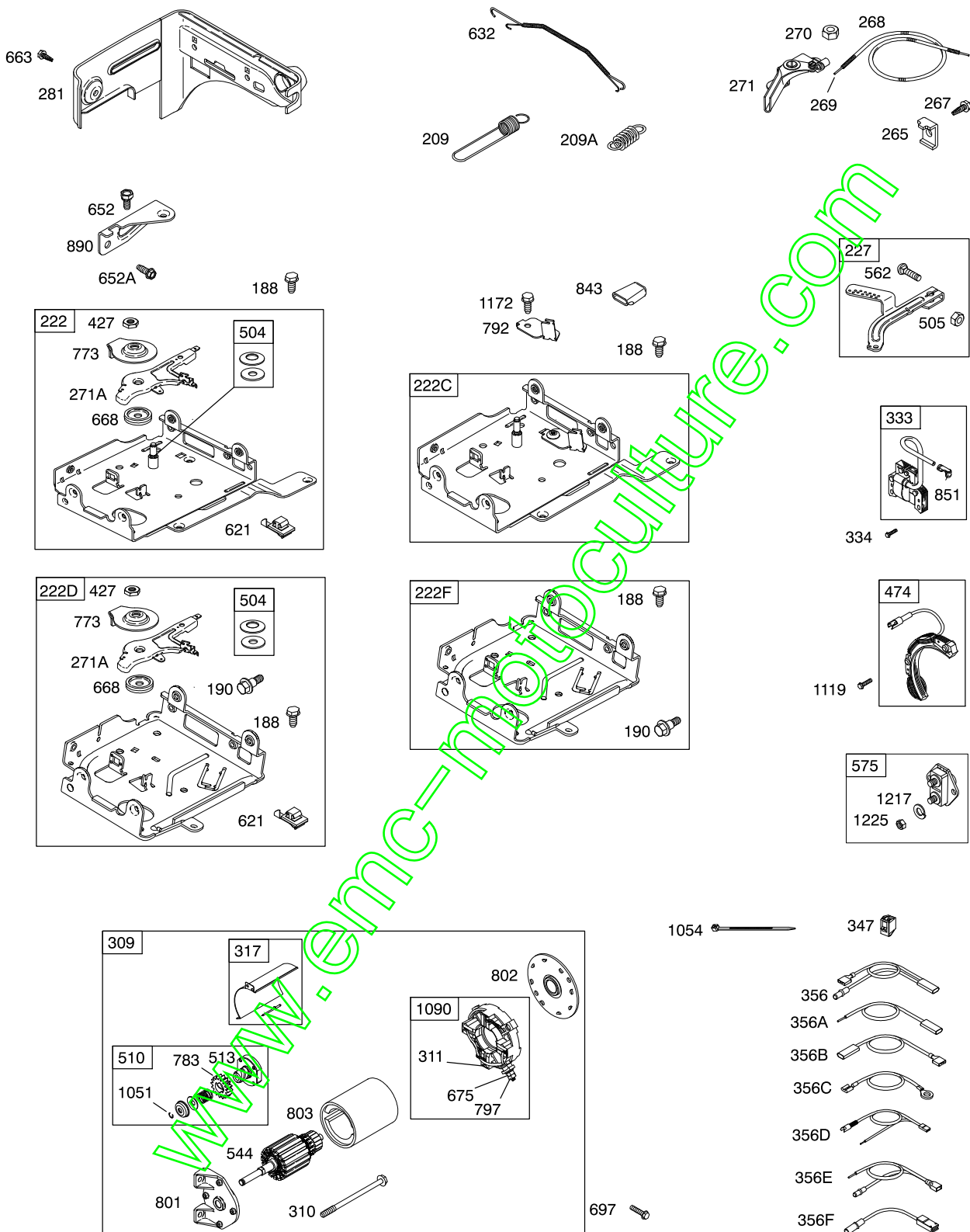
COPYRIGHT by BRIGGS & STRATTON CORPORATION
All rights reserved. No part of this material may be reproduced or transmitted, in any form or by any means, electronic or mechanical, including photocopying, recording or by any information storage and retrieval system, without permission in writing from Briggs & Stratton Corporation.



Illustrations cover a range of engines. Parts shown without corresponding text may not be used on your specific engine.

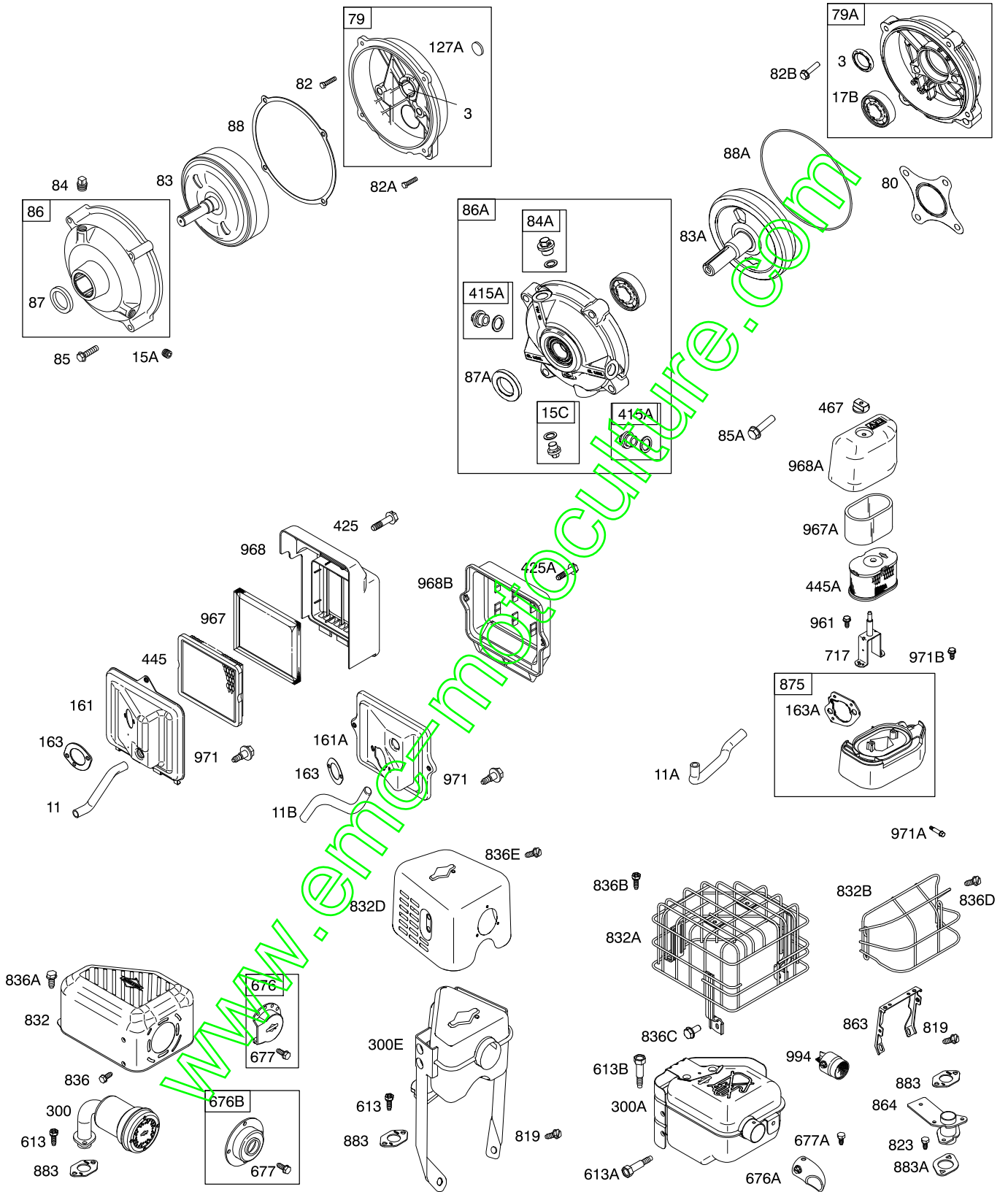


Illustrations cover a range of engines. Parts shown without corresponding text may not be used on your specific engine.

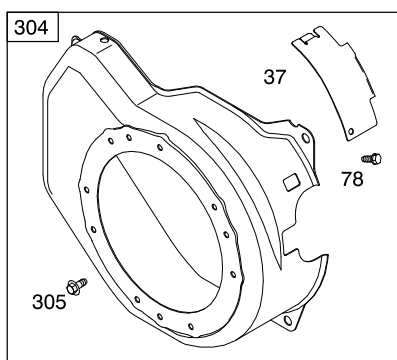
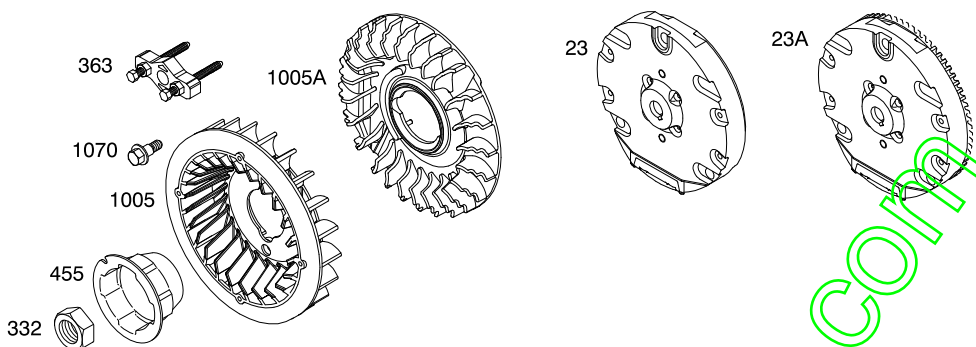


Illustrations cover a range of engines. Parts shown without corresponding text may not be used on your specific engine.

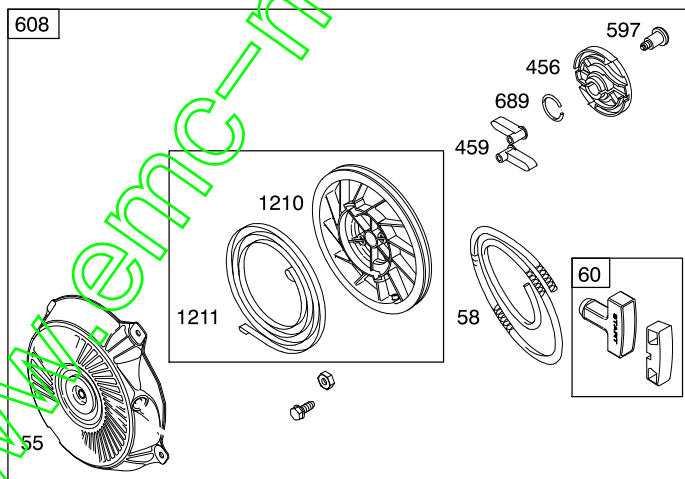
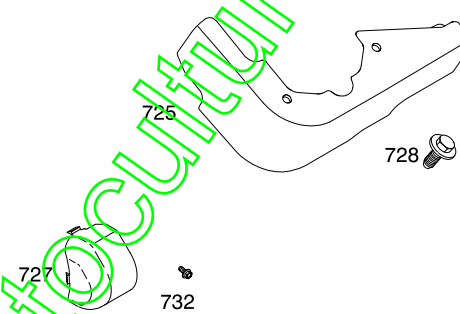
126300



Illustrations cover a range of engines. Parts shown without corresponding text may not be used on your specific engine. 5718-6 Assemblies include all parts shown in frames. 06/10/2008



1036 EMISSIONS LABEL



Illustrations cover a range of engines. Parts shown without corresponding text may not be used on your specific engine.

126300

REF. NO.	PART NO.	DESCRIPTION	REF. NO.	PART NO.	DESCRIPTION	REF. NO.	PART NO.	DESCRIPTION
1	699510	Cylinder Assembly	16	699445	Crankshaft	17	692517	Bearing-Ball
2	399269	Kit-Bushing/Seal (Magneto Side)			----- Note -----	17B	99158	Bearing-Ball
3	★299819S	Seal-Oil (Magneto Side)			792883 Crankshaft (Used After Code Date 06051600). Used on Type No(s). 0049,0050,0113,0138, 0289,0302,0400,0424, 0549,1049,1289.	18	699804	Cover-Crankcase
5	699486	Head-Cylinder			699444 Crankshaft (Used Before Code Date 06051700). Used on Type No(s). 0049,0113,0289.			----- Note ----- 699696 Cover- Crankcase Used on Type No(s). 0121,0122,0127,0134, 0139,0161,0191,0206, 0210,0245,0261,0264, 0270,0279,0296,0320, 0321,0368,0396,0416, 0421,0562,0563,0659, 0678,0776,3776.
7	★Ø698210	Gasket-Cylinder Head			699447 Crankshaft Used on Type No(s). 0038,0167,0174,0177, 0178,0216,0234,0262, 1167,1174,1178.			699804 Cover- Crankcase (Used After Code Date 07070200). Used on Type No(s). 0049,0050,0138,0289, 0302,0424,0549.
11	692600	Tube-Breather (Flat Panel Air Cleaner)			699452 Crankshaft Used on Type No(s). 0158,0210,0245,0321, 0357,0413.	18A	699672	Cover-Crankcase Used on Type No(s). 0035,0036,0064,0120, 0124,0126,0135,0137, 0151,0162,0176,0202, 0205,0213,0215,0220, 0233,0237,0255,0259, 0285,0288,0303,0361, 0399,0535,0536,1035, 1036,1064,1237,1255, 1288.
11A	693647	Tube-Breather (High Mount Air Cleaner)			699449 Crankshaft Used on Type No(s). 0122,0161,0261,0270, 0359,0386,0562,0580, 0659.			18B 699761 Cover-Crankcase Used on Type No(s). 0113,0400,1049,1289.
11B	790632	Tube-Breather (Ultra Low Air Cleaner)			699451 Crankshaft Used on Type No(s). 0060,0127,0130,0139, 0163,0191,0207,0212, 0227,0259,0264,0275, 0276,0278,0280,0281, 0282,0290,0295,0296, 0560,1207,1276,1280, 1281,1290,1560.			----- Note ----- 699761 Cover- Crankcase (Used Before Code Date 07070300). Used on Type No(s). 0049,0138,0289,0302, 0549.
12	★699485	Gasket-Crankcase			699441 Crankshaft Used on Type No(s). 0035,0120,0124,0126, 0137,0151,0285,0301, 0399,0535,1035.	18C	699677	Cover-Crankcase Used on Type No(s). 0070,0117,0165,0199, 0229,0232,0235,0242, 0243,0247,0253,0271, 0272,0274,0286,0360, 0570,1070,1117,1199, 1229,1235,1242,1243, 1253,1274.
13	699482	Screw (Cylinder Head)			699443 Crankshaft Used on Type No(s). 0036,0064,0162,0176, 0202,0205,0213,0215, 0220,0233,0237,0247, 0255,0288,0303,0398, 0402,0536,1036,1064, 1237,1255.			
15	691686	Plug-Oil Drain (Square Head)						
15A	691682	Plug-Oil Drain (Flush)						
15C	792750	Plug-Oil Drain						

★ Included in Engine Gasket Set-Ref. No.358.
● Included in Carburetor Overhaul Kit-Ref. No. 121.

◆ Included in Carburetor Gasket Set-Ref. No. 977.
Ø Included in Valve Gasket Set-Ref. No 1095.

Illustrations cover a range of engines. Parts shown without corresponding text may not be used on your specific engine.

REF. NO.	PART NO.	DESCRIPTION	REF. NO.	PART NO.	DESCRIPTION	REF. NO.	PART NO.	DESCRIPTION
20	★692550	Seal-Oil (PTO Side)	30	791584	Dipper-Connecting Rod	58	693389	Rope-Starter (Used After Code Date 08030200).
20A	★691952	Seal-Oil (PTO Side) Used on Type No(s). 0070, 0117, 0165, 0199, 0229, 0232, 0235, 0242, 0243, 0247, 0253, 0271, 0272, 0274, 0286, 0360, 0570, 1070, 1117, 1199, 1229, 1235, 1242, 1243, 1253, 1274.	32	691664	Screw (Connecting Rod)	----- Note -----		
21	281658S	Cap-Oil Fill	32A	695759	Screw (Connecting Rod)	60	490652	Grip-Starter Rope (2 Piece)
22	699478	Screw (Crankcase Cover/ Sump)	33	499642	Valve-Exhaust	60A	281434S	Grip-Starter Rope Screw
23	699488	Flywheel	34	499641	Valve-Intake	65	699228	(Rewind Starter)
23A	699514	Flywheel Used on Type No(s). 0146, 0217.	35	691304	Spring-Valve (Intake)	78	699205	Screw (Flywheel Guard)
24	222698S	Key-Flywheel	36	691304	Spring-Valve (Exhaust)	79	694511	Case-Gear Reduction (Used Before Code Date 06051700).
25	791968	Piston Assembly (Standard) ----- Note ----- 791326 Piston Assembly (.020" Oversize)	37	699661	Guard-Flywheel	79A	792746	Case-Gear Reduction (Used After Code Date 06051600).
26	791969	Ring Set (Standard) (Used After Code Date 05030800). ----- Note ----- 499631 Ring Set (Standard) (Used Before Code Date 05030900). 791324 Ring Set (.020" Oversize) (Used After Code Date 05030800). 692786 Ring Set (.020" Oversize) (Used Before Code Date 05030900).	38	692194	Retainer-Valve	80	792755	Gasket-Gear Case
27	691866	Lock-Piston Pin	39	690977	Tappet-Valve	82	690369	Screw (Gear Reduction Case) (Used Before Code Date 06051700).
28	499423	Pin-Piston	40	692194	Retainer-Valve	82A	790197	Screw (Gear Reduction Case) (Used Before Code Date 06051700).
29	690124	Rod-Connecting	45	690977	Tappet-Valve	82B	792753	Screw (Gear Reduction Case) (Used After Code Date 06051600).
			46	693404	Camshaft	83	690374	Shaft-Auxiliary Drive (Used Before Code Date 06051700).
			46A	694831	Camshaft Used on Type No(s). 0070, 0165, 0199, 0232, 0235, 0243, 0274, 0570, 1070, 1199, 1235, 1242, 1274. ----- Note ----- 695285 Camshaft Used on Type No(s). 0117, 0229, 0242, 0247, 0253, 0271, 0272, 0286, 0360, 1117, 1229, 1242.	60	490652	Grip-Starter Rope (2 Piece)
			51★♦♦	692555	Gasket-Intake	60A	281434S	Grip-Starter Rope Screw
			55	791848	Housing-Rewind Starter (Used After Code Date 08030200). ----- Note ----- 691422 Housing- Rewind Starter (Used Before Code Date 08030300). (Rewind Starter Parts Used With 3MM Diameter Starter Rope) 791848 Housing- Rewind Starter (Used Before Code Date 08030300). (Rewind Starter Parts Used With 5MM Diameter Starter Rope)	65	699228	(Rewind Starter)
						78	699205	Screw (Flywheel Guard)
						79	694511	Case-Gear Reduction (Used Before Code Date 06051700).
						79A	792746	Case-Gear Reduction (Used After Code Date 06051600).
						80	792755	Gasket-Gear Case
						82	690369	Screw (Gear Reduction Case) (Used Before Code Date 06051700).
						82A	790197	Screw (Gear Reduction Case) (Used Before Code Date 06051700).
						82B	792753	Screw (Gear Reduction Case) (Used After Code Date 06051600).
						83	690374	Shaft-Auxiliary Drive (Used Before Code Date 06051700).
						83A	792756	Shaft-Auxiliary Drive (Used After Code Date 06051600).

★ Included in Engine Gasket Set-Ref. No.358.

● Included in Carburetor Overhaul Kit-Ref. No. 121.

♦ Included in Carburetor Gasket Set-Ref. No. 977.

⊘ Included in Valve Gasket Set-Ref. No 1095.

Illustrations cover a range of engines. Parts shown without corresponding text may not be used on your specific engine.

5718-9

Assemblies include all parts shown in frames.

06/10/2008

126300

REF. NO.	PART NO.	DESCRIPTION	REF. NO.	PART NO.	DESCRIPTION	REF. NO.	PART NO.	DESCRIPTION
84	691121	Plug-Breather	109	690023	Shaft-Choke	122	★693749	Spacer-Carburetor
84A	792759	Plug-Breather	109A	693628	Shaft-Choke	122A	695286	Spacer-Carburetor Used on Type No(s). 0231, 1231.
85	692551	Screw (Gear Cover to Gear Reduction) (Used Before Code Date 06051700).	109C	790624	Shaft-Choke	125	696981	Carburetor ----- Note ----- 791077 Carburetor Used on Type No(s). 0121, 0357, 0359, 0386, 0396, 0407, 0413, 0416, 0421, 0525, 0563, 0580, 0616, 0659, 0678, 0775, 0776, 3775, 3776. 697028 Carburetor Used on Type No(s). 0125, 0152, 0158, 0161, 0163, 0186, 0205, 0207, 0210, 0226, 0237, 0245, 0263, 0272, 0276, 0279, 0286, 0297, 0299, 0321, 0571, 1207, 1237, 1276. 498975 Jet-Main (Standard) Used on Type No(s). 0038, 0167, 0174, 0177, 0178, 0216, 0234, 0262, 1167, 1174, 1178.
85A	690711	Screw (Gear Cover to Gear Reduction) (Used After Code Date 06051600).	117	498978	Jet-Main ----- Note ----- 697355 Jet-Main (Standard) Used on Type No(s). 0125, 0152, 0158, 0161, 0163, 0186, 0205, 0207, 0210, 0226, 0237, 0245, 0263, 0272, 0276, 0279, 0286, 0297, 0299, 0321, 0571, 1207, 1237, 1276. 498975 Jet-Main (Standard) Used on Type No(s). 0038, 0167, 0174, 0177, 0178, 0216, 0234, 0262, 1167, 1174, 1178.			
86	690608	Cover-Gear (Used Before Code Date 06051700).	118	498975	Jet-Main (High Altitude) ----- Note ----- 494870 Jet-Main (High Altitude) Used on Type No(s). 0125, 0152, 0158, 0161, 0163, 0186, 0205, 0207, 0210, 0226, 0237, 0245, 0263, 0272, 0276, 0279, 0286, 0297, 0299, 0321, 0571, 1207, 1237, 1276. 497466 Jet-Main (High Altitude) Used on Type No(s). 0038, 0167, 0174, 0177, 0178, 0216, 0234, 0262, 1167, 1174, 1178.			
86A	795647	Cover-Gear (Used After Code Date 08010100). ----- Note ----- 792748 Cover-Gear (Used After Code Date 06051600 and Before Code Date 08010200).						
87	691582	Seal-Gear Reduction (Used Before Code Date 06051700).						
87A	792752	Seal-Gear Reduction (Used After Code Date 06051600).						
88	691600	Gasket-Gear Reduction Cover						
88A	792760	Gasket-Gear Reduction Cover						
95	691636	Screw (Throttle Valve)				127	●691739	Plug-Welch
97	690024	Shaft-Throttle				127A	691585	Plug-Welch
98	398185	Kit-Idle Speed (Carburetor)				130	691181	Valve-Throttle
104	●691242	Pin-Float Hinge				130A	691203	Valve-Throttle Used on Type No(s). 0038, 0167, 0174, 0177, 0178, 0216, 0234, 0262, 1174, 1178.
108	692567	Valve-Choke ----- Note ----- 699111 Valve-Choke Used on Type No(s). 0038, 0167, 0174, 0177, 0178, 0216, 0234, 0262, 1174, 1178.				133	398187	Float-Carburetor
			121	696998	Kit-Carburetor Overhaul	134	●398188	Kit-Needle/Seat
						137	◆693981	Gasket-Float Bowl
						146	690979	Key-Timing

★ Included in Engine Gasket Set-Ref. No.358.
● Included in Carburetor Overhaul Kit-Ref. No. 121.

◆ Included in Carburetor Gasket Set-Ref. No. 977.
⊗ Included in Valve Gasket Set-Ref. No 1095.

Illustrations cover a range of engines. Parts shown without corresponding text may not be used on your specific engine.
5718-10 Assemblies include all parts shown in frames. 06/10/2008

REF. NO.	PART NO.	DESCRIPTION	REF. NO.	PART NO.	DESCRIPTION	REF. NO.	PART NO.	DESCRIPTION
155	★698214	Plate-Cylinder Head	219	693578	Gear-Governor	305	699480	Screw
161	699207	Base-Air Cleaner (Flat Panel Air Cleaner)	220	691724	Washer (Governor Gear)	306	693610	Shield-Cylinder
161A	790631	Base-Air Cleaner (Ultra Low Air Cleaner)	222	699589	Bracket-Control (Used Before Code Date 06051500).	307	699483	Screw (Cylinder Shield)
163★◆696024		Gasket-Air Cleaner (Flat Panel Air Cleaner)	222C	699590	Bracket-Control (Used Before Code Date 06051500).	309	694504	Motor-Starter
163A★◆792870		Gasket-Air Cleaner (High Mount)	222D	793107	Bracket-Control (Used After Code Date 06051400).	310	690323	Screw (Starter Motor)
170	699818	Stud (Crankcase Cover)	222F	793100	Bracket-Control (Used After Code Date 06051400).	311	497608	Brush Set
186	692317	Connector-Hose	227	692573	Lever-Governor Control	317	695494	Cover-Starter
187	791766	Line-Fuel (Cut to Required Length)	238	691300	Valve-Cap	332	792723	Nut (Flywheel)
187A	791867	Line-Fuel (Molded)	240	298090S	Filter-Fuel	333	695711	Armature-Magneto
187B	791874	Line-Fuel (Molded)			Note 394358S Filter-Fuel Used on Type No(s) 0202, 0215, 0402.	334	699477	Screw (Magneto Armature)
187C	791866	Line-Fuel (Molded)	240A	694485	Filter-Fuel	337	491055S	Plug-Spark (Resistor)
188	699479	Screw (Control Bracket)	265	691024	Clamp-Casing			Note ----- 691043 Plug-Spark (EMS)
190	699220	Screw (Fuel Tank)	267	699492	Screw (Casing Clamp)	347	697854	Switch-Rocker
192	694543	Adjuster-Rocker Arm	268	691025	Casing-Control Wire (Cut to Required Length)			Note ----- 698338 Switch-Rocket Used on Type No(s). 0038, 0043, 0168, 0188, 0211, 0213, 0217, 0234, 0237, 0401, 0423, 1237.
209	692571	Spring-Governor	269	691026	Wire-Control (Cut to Required Length)	356	693651	Wire-Stop
		Note ----- 693206 Spring-Governor Used on Type No(s). 0023, 0035, 0038, 0060, 0070, 0120, 0135, 0137, 0151, 0163, 0191, 0212, 0234, 0262, 0273, 0278, 0282, 0285, 0295, 0361, 0362, 0523, 0535, 0560, 0570, 1023, 1035, 1070, 1253, 1560.	270	691027	Nut (Control Wire Casing)	356A	692390	Wire-Stop
			271	691028	Lever-Control	356B	692602	Wire-Stop
			271A	694256	Lever-Control	356C	695630	Wire-Stop
			276	◆271716	Washer-Sealing	356D	695283	Wire-Stop
			281	793122	Panel-Control	356E	695814	Wire-Stop
			286	698611	Module-Oil Sensor	356F	697397	Wire-Stop
			287	699629	Screw (Dipstick Tube)	357	691483	Key-Drive Pulley Used on Type No(s). 0207, 0276.
			300	693593	Muffler			Note ----- 692191 Key-Drive Pulley Used on Type No(s). 0162.
			300A	699231	Muffler	357A	690339	Key-Drive Pulley Used on Type No(s). 0274, 1274.
			300E	791595	Muffler			
			304	699598	Housing-Blower			
209A	691278	Spring-Governor						

★ Included in Engine Gasket Set-Ref. No.358.

● Included in Carburetor Overhaul Kit-Ref. No. 121.

◆ Included in Carburetor Gasket Set-Ref. No. 977.

⊗ Included in Valve Gasket Set-Ref. No 1095.

Illustrations cover a range of engines. Parts shown without corresponding text may not be used on your specific engine.

5718-11

Assemblies include all parts shown in frames.

06/10/2008

126300

REF. NO.	PART NO.	DESCRIPTION	REF. NO.	PART NO.	DESCRIPTION	REF. NO.	PART NO.	DESCRIPTION
358	791797	Gasket Set-Engine	601	791850	Clamp-Hose	663	699206	Screw (Control Panel)
363	19203	Puller-Flywheel	608	795930	Starter-Rewind (Used After Code Date 08030200).	668	694257	Spacer
364	695693	Terminal-Oil Plug				675	691261	Washer (Brush Retainer)
365	699484	Screw (Carburetor)			----- Note -----	676	393757	Deflector-Muffler
383	19374S	Wrench-Spark Plug			693394 Starter- Rewind	676A	697816	Deflector-Muffler
415	693463	Plug			(Used Before Code Date 08030300).	676B	395700	Deflector-Muffler
415A	792749	Plug			(Rewind Starter Parts Used With 3MM Diameter Starter Rope)	677	690661	Screw (Muffler Deflector)
425	699208	Screw (Air Cleaner Cover)			791670 Starter- Rewind	677A	699776	Screw (Muffler Deflector)
425A	699492	Screw (Air Cleaner Cover)			(Used Before Code Date 08030300).	689	691855	Spring-Friction
427	694255	Nut (Control Bracket)			(Rewind Starter Parts Used With 5MM Diameter Starter Rope)	692	690572	Spring-Detent
445	491588S	Filter-Air Cleaner Cartridge (Flat Panel)			497680 Starter- Rewind	697	790537	Screw (Starter Motor)
445A	697029	Filter-Air Cleaner Cartridge (High Mount)			(Used Before Code Date 08030300).			(Used After Code Date 04110800).
455	692591	Cup-Flywheel			(Rewind Starter Parts Used With 5MM Diameter Starter Rope)			----- Note -----
456	692299	Plate-Pawl Friction			699773 Screw (Starter Motor)			(Used Before Code Date 04110900).
459	281505S	Pawl-Ratchet			497680 Starter- Rewind	717	693462	Bracket-Air Cleaner
467	691668	Knob-Air Cleaner			Used on Type No(s). 0206, 0217.	718	690959	Pin-Locating
474	694457	Alternator	613	699209	Screw (Muffler)	725	792874	Shield-Heat
		----- Note -----	613A	699480	Screw (Muffler)	727	698039	Cover-Starter Drive
		793640 Alternator Used on Type No(s). 0146.	613B	697812	Screw (Muffler)	728	699632	Screw (Heat Shield)
504	694254	Washer Set-Friction	615	692576	Retainer-Governor Shaft	732	699200	Screw (Starter Drive Cover)
505	691251	Nut (Governor Control Lever)	616	692547	Crank-Governor	741	695087	Gear-Timing
510	499308	Drive-Starter	619	699480	Screw (Cylinder Head Plate)	742	692564	Retainer-E Ring
513	692024	Drive-Clutch	621	692310	Switch-Stop	746	790278	Gear-Idler
523	693618	Dipstick	632	693408	Spring/Link-Mechani- cal Governor	773	694258	Retainer
		----- Note -----	633	693867	Seal-Choke/Throttle Shaft	783	692353	Gear-Pinion
		790546 Dipstick Used on Type No(s). 0359, 0580.	633A	691321	Seal-Choke/Throttle Shaft	792	694259	Bracket-Fixed Speed
524	281370S	Seal-Dipstick Tube	635	692076	Boot-Spark Plug	797	691029	Nut (Brush Retainer)
544	692966	Armature-Starter	635A	692927	Boot-Spark Plug	799	699202	Screw (Oil Sensor)
552	692346	Bushing-Governor Crank	652	699755	Screw (Support Bracket)	801	694482	Cap-Drive
562	691119	Bolt (Governor Control Lever)	652A	699480	Screw (Support Bracket)	802	691286	Cap-End
575	692303	Switch-Starting				803	693757	Housing-Starter
597	691696	Screw (Pawl Friction Plate)				819	699233	Screw (Muffler Bracket)
						823	699209	Screw (Muffler Adapter)

★ Included in Engine Gasket Set-Ref. No.358.

● Included in Carburetor Overhaul Kit-Ref. No. 121.

◆ Included in Carburetor Gasket Set-Ref. No. 977.

⊘ Included in Valve Gasket Set-Ref. No 1095.

Illustrations cover a range of engines. Parts shown without corresponding text may not be used on your specific engine.

5718-12

Assemblies include all parts shown in frames.

06/10/2008

REF. NO.	PART NO.	DESCRIPTION	REF. NO.	PART NO.	DESCRIPTION	REF. NO.	PART NO.	DESCRIPTION
830	694544	Stud-Rocker Arm	967	493537S	Filter-Pre Cleaner (Flat Panel)	1210	791849	Pulley/Spring Assembly
832	693583	Guard-Muffler						(Pulley)
832A	697818	Guard-Muffler	967A	273356S	Filter-Pre Cleaner (High Mount)			(Used After Code Date 08030200).
832B	696516	Guard-Muffler						----- Note -----
832D	791600	Guard-Muffler	968	692584	Cover-Air Cleaner (Flat Panel Air Cleaner)			498144 Pulley/Spring Assembly
836	699203	Screw (Muffler Guard)						(Pulley)
836A	699632	Screw (Muffler Guard)	968A	693460	Cover-Air Cleaner (High Mount)			(Used Before Code Date 08030300).
836B	699209	Screw (Muffler Guard)	968B	791082	Cover-Air Cleaner (Ultra Low Air Cleaner)			(Rewind Starter Parts Used With 3MM Diameter Starter Rope)
836C	699234	Screw (Muffler Guard)	971	690370	Screw (Air Cleaner Base)			791849 Pulley/Spring Assembly
836D	699204	Screw (Muffler Guard)	971A	690349	Screw (Air Cleaner Base)			(Pulley)
836E	699755	Screw (Muffler Guard)	971B	699629	Screw (Air Cleaner Base)			(Used Before Code Date 08030300).
842	691031	Seal-O Ring (Dipstick Tube)	972	694260	Tank-Fuel			(Rewind Starter Parts Used With 5MM Diameter Starter Rope)
843	695588	Sleeve-Lever	975	493640	Bowl-Float			----- Note -----
847	693617	Dipstick/Tube Assembly	977	792007	Gasket Set-Carburetor			498144 Pulley/Spring Assembly
		----- Note -----	993	Ø694088	Gasket-Cylinder Head Plate			(Spring)
		790545 Dipstick/Tube Assembly	994	790153	Arrester-Spark			(Used Before Code Date 08030300).
		Used on Type No(s). 0326, 0580.	1005	692592	Fan-Flywheel	1211	791849	Pulley/Spring Assembly
851	493880S	Terminal-Spark Plug	1005A	794273	Fan-Flywheel			(Spring)
863	699229	Bracket-Muffler	1019	694852	Kit-Label			(Used After Code Date 08030200).
864	699232	Adapter-Muffler	1022	*Ø691890	Gasket-Rocker Cover			----- Note -----
868	*Ø692044	Seal-Valve	1023	499924	Cover-Rocker Arm			498144 Pulley/Spring Assembly
875	697030	Base-Air Cleaner (High Mount)	1026	790287	Rod-Push			(Spring)
883	*691893	Gasket-Exhaust	1029	691230	Arm-Rocker			(Used Before Code Date 08030300).
883A	*692237	Gasket-Exhaust (Adapter Mounting)	1034	691543	Guide-Push Rod			(Rewind Starter Parts Used With 3MM Diameter Starter Rope)
890	790203	Bracket-Support	1036		Label-Emissions (Available From An Authorized Briggs & Stratton Service Dealer)			791849 Pulley/Spring Assembly
914	699480	Screw (Rocker Cover) (Bottom)	1051	691265	Ring-Retaining			(Spring)
914A	692557	Screw (Rocker Cover) (Top)	1052	790141	Sensor-Oil			(Used Before Code Date 08030300).
914B	697551	Screw (Rocker Cover) (Center)	1054	280275	Cable-Tie			(Rewind Starter Parts Used With 5MM Diameter Starter Rope)
951	790630	Lever-Choke	1058	277040	Operator's Manual			791849 Pulley/Spring Assembly
957	792647	Cap-Fuel Tank	1070	699201	Screw (Flywheel Fan)			(Spring)
958	698180	Valve-Fuel Shut Off	1090	691293	Retainer-Brush			(Used Before Code Date 08030300).
961	698304	Screw (Air Cleaner Bracket)	1095	791798	Gasket Set-Valve			(Rewind Starter Parts Used With 5MM Diameter Starter Rope)
			1119	699772	Screw (Alternator)	1217	691075	Washer (Starting Switch)
			1172	699230	Screw (Fixed Speed Bracket)	1225	696198	Nut (Starting Switch)
						1305	699691	Screw (Oil Sensor Module)
						1319	794467	Label-Warning
						1330	272147	Repair Manual

* Included in Engine Gasket Set-Ref. No.358.

• Included in Carburetor Overhaul Kit-Ref. No. 121.

◆ Included in Carburetor Gasket Set-Ref. No. 977.

Ø Included in Valve Gasket Set-Ref. No 1095.

Illustrations cover a range of engines. Parts shown without corresponding text may not be used on your specific engine.

5718-13

Assemblies include all parts shown in frames.

06/10/2008

Caractéristiques câbles Marche Avant et Marche Arrière YB35-36-50-55-56-70

LONGUEURS

MACHINE	REFERENCE	HORS TOUT	CABLE	GAINE
YB50	Av. FP400420	111	106	82,5
	Ar. FP400420	111	106	82,5
YB50IN				
2000	Av. FP400420	111	106	82,5
	Ar. FP201280	130	124	83
2002	Av. FP402970	120	115	83
	Ar. FP402960	130	125	82,5
YB50HD				
2000	Av. FP402240	105	100	82
	Ar. FP402250	146	141	131
2002	Av. FP403960	116	111	83
	Ar. FP402250	146	141	131
YB35	Av. FP202590	116	111	83
YB36IN	Av. FP541360			
YB55IN	Av. FP202590	116	111	83
	Ar. FP202600	121,5	116	83
YB55HD	Av. FP202590	116	111	83
	Ar. FP405640	118,2	113	83
YB56IN	Av. FP406490			
	Ar. FP406500			
YB56HD	Av. FP406490			
	Ar. FP406500			
YB70	Av. FP202590	116	111	83

www.emc-motoculture.com



LABEL NATURE!

Yvan Béal - 21, av. de l'Agriculture - B.P 16

Z.I. du Brézet - 63014 Clermont-Ferrand Cedex 2

Tél : 04 73 91 93 51 - Télécopie : 04 73 90 23 11

www.yvanbeal.fr - E-mail : info@yvanbeal.fr

R.C.S. B 304 973 886 - S.A.S. au capital de 612 000 €

www.emc-motoculture.com